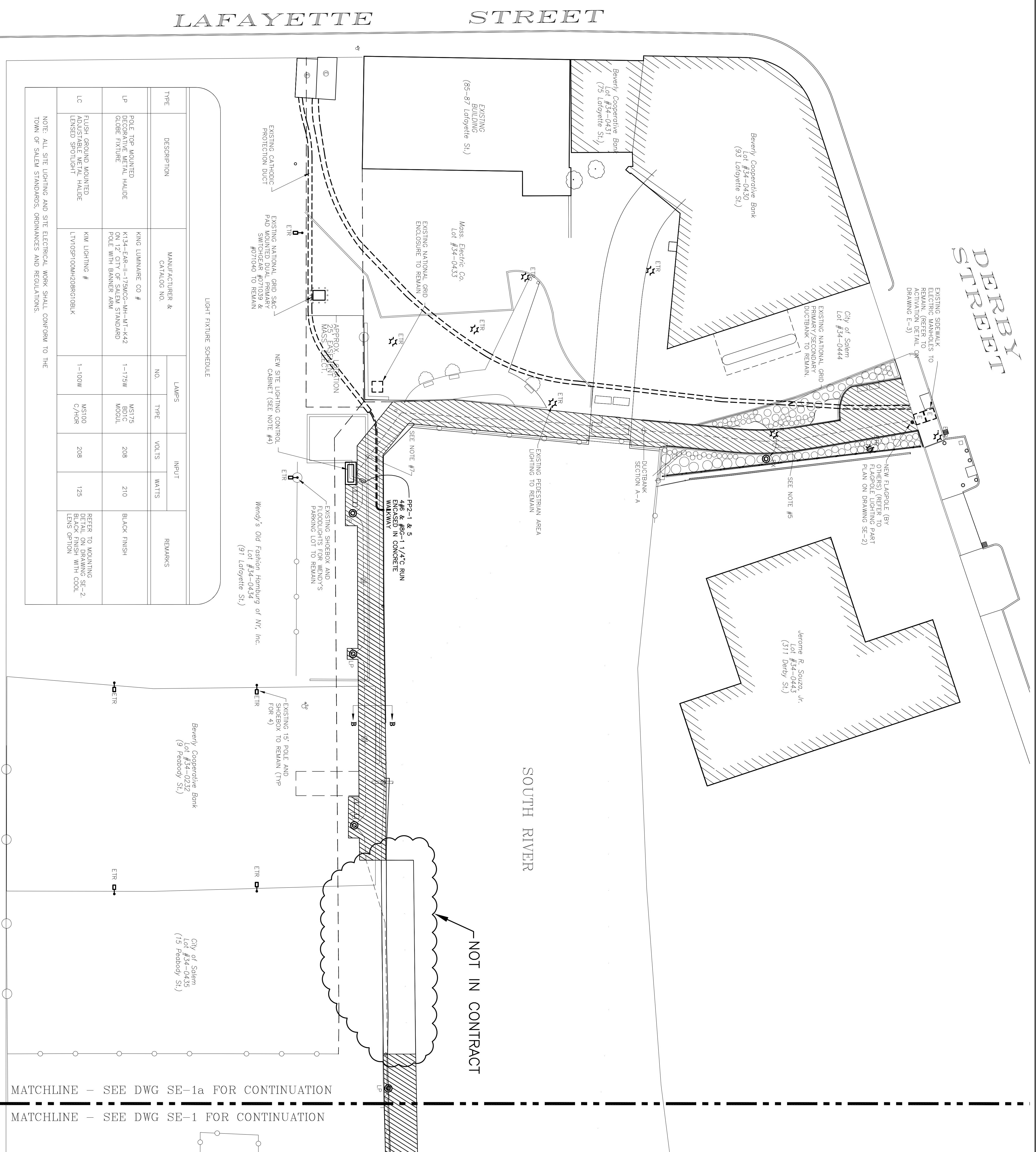


DERBY STREET



LIGHT FIXTURE SCHEDULE

TYPE	DESCRIPTION	MANUFACTURER & CATALOG NO.	LAMPS			REMARKS	
			NO.	TYPE	INPUT VOLTS / WATTS		
LP	POLE TOP MOUNTED DECORATIVE METAL HALIDE GLOBE FIXTURE	KING LUMINAIRE CO # K134-FAR-II-175MG-MH-WI-K442 ON 12" CITY OF SALEM STANDARD POLE WITH BANNER ARM	1-175W	MS175 BLDG MODULE	208	210	BLACK FINISH
LC	FLUSH GROUND MOUNTED ADJUSTABLE METAL HALIDE LENSED SPOTLIGHT	KIM LIGHTING # LTV10SP100MH20BRQ1BK	1-100W	MS100 C/HOR	208	125	REFER TO MOUNTING DETAIL ON DRAWING SE-2 BLACK FINISH WITH COOL LENS OPTION

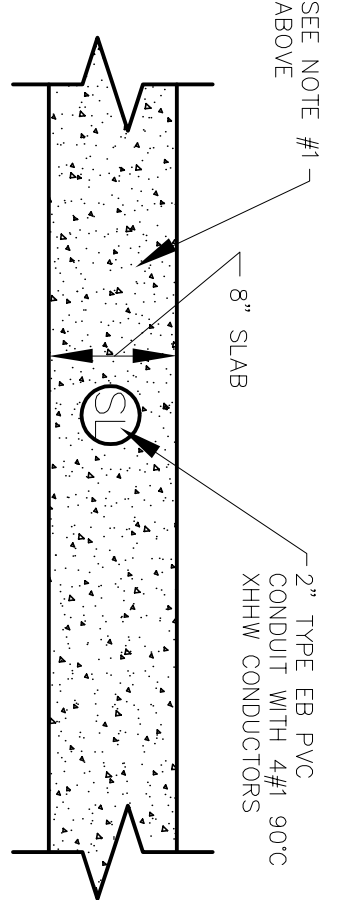
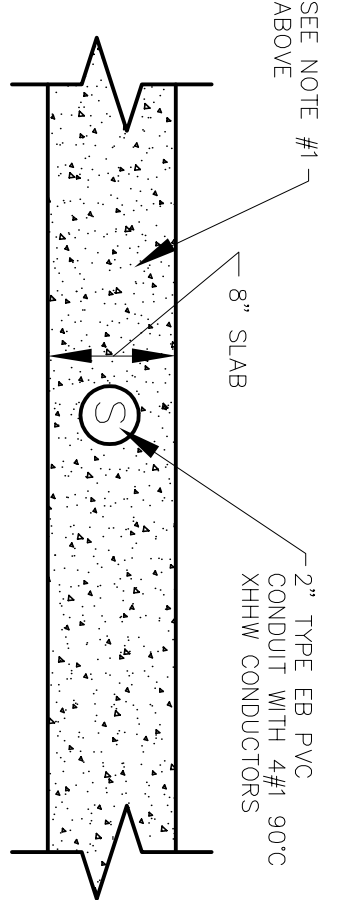
NOTE: ALL SITE LIGHTING AND SITE ELECTRICAL WORK SHALL CONFORM TO THE TOWN OF SALEM STANDARDS, ORDINANCES AND REGULATIONS.

SITE ELECTRICAL PLAN NOTES

- CONDUIT SWEEPS RISING INTO LOAD CENTER CABINET PADS, UTILITY POLE RISERS, ETC. SHALL BE GALVANIZED STEEL CONDUIT & SHALL BE A MINIMUM OF 36" BEND.
- THE LOAD CENTER CABINET PAD SHALL BE CONSTRUCTED BY THE GENERAL CONTRACTOR. THE GROUNDING GRID SHALL BE PROVIDED BY THE ELECTRICAL CONTRACTOR.
- ALL SECONDARY CONDUCTORS & SECONDARY LUGS SHALL BE PROVIDED BY THE ELECTRICAL CONTRACTOR. FINAL CONNECTION OF SECONDARY CABLES SHALL BE PERFORMED BY NATIONAL GRID.
- EACH ITEM REFERRED TO THIS NOTE IS A PAD MOUNTED LOAD CENTER CABINET PROVIDED BY THE ELECTRICAL CONTRACTOR. REFER TO LOAD CENTER CABINET DETAILS ON DRAWING SE-3 FOR WORK REQUIRED BY THE GENERAL AND ELECTRICAL CONTRACTORS.
- EACH ITEM REFERRED TO THIS NOTE IS AN EXISTING "TYPE LP" POLE MOUNTED LUMINAIRE TO BE RELOCATED (ALONG WITH ITS ASSOCIATED BRANCH CIRCUITRY) TO THE LOCATION INDICATED ON THE PLAN. SEE GENERAL DETAIL ON DRAWING SE-1 FOR A NEW POLE BASE AS PER THE TYPICAL.
- ALL EMPTY CONDUITS SHALL BE PROVIDED WITH A NYLON PULL WIRE FOR THEIR ENTIRE LENGTH.
- EXTEND SECONDARY CONDUITS AND CONDUCTORS UP TO LOAD CENTER CABINET MAIN SWITCH AND CONNECT TO TERMINALS.
- EXTEND 1 1/4" CONDUIT INTO LOAD CENTER CABINET. STUB CONDUIT UP 6" ABOVE TOP OF PAD. CAP AND SEAL.

UNDERGROUND CONDUIT BANK DETAILS

- NOTES:
- CONCRETE ENCASUREMENT OF UNDERGROUND DUCT BANKS SHALL BE PERFORMED BY THE ELECTRICAL CONTRACTOR IN ACCORDANCE WITH LOCAL UTILITY COMPANY STANDARDS.
 - ALL SCHEDULE 40 PVC FACEWAYS UTILIZED SHALL BE UL LISTED ELECTRICAL CONDUITS.



**ISSUED FOR DRAFT
NOT FOR CONSTRUCTION**
DATE ISSUED: *AUG. 2008*
VINE ASSOCIATES, INC.

Engineered Building Systems, Inc.
Consulting Engineers
22 MANCHESTER ROAD, SUITE 8A
DERRY, NH 03038
TEL: (603) 439-4835
E-mail: eb@ebshand.net

SITE ELECTRICAL PLAN

SALEM HARBORWALK
DERBY STREET TO CONGRESS STREET
SALEM, MASSACHUSETTS

Vine Associates, Inc.
372 WEDBURN STREET, NEWBURYPORT, MA 01950
TEL: (978) 465-1428
FAX: (978) 465-2849

14 BELOA STREET, HINGHAM, MA 02043
TEL: (508) 724-0380
FAX: (508) 724-9591

DES. WIT. CHK. APP'D. SCALE: 1"=20'

DR. BL. VAI. DATE: AUG. 2008. FILE NO.: SE-1

PEABODY STREET

LAFAYETTE STREET