

15 PEABODY STREET

Salem, MA
City of Salem

Salem City Hall
93 Washington Street
Salem, MA 01970
P: 978.745.9595

TEAM

landworks>studio inc.

112 Shawmut Avenue - Studio 6B
Boston, MA 02118
P: 617.426.3030
F: 617.426.3033

10 Derby Square, 4th Floor
Salem, MA 01970
P: 617.426.3030
F: 617.426.3033

www.landworks-studio.com

LANDSCAPE ARCHITECT

utile

30 Summer Street
Boston, MA 02110
P: 617.423.7200
F: 617.423.1414
www.utiledesign.com

URBAN DESIGN

Vine

ASSOCIATES, INC.
372 Merrimac Street
Newburyport, MA 01950
P: 978.465.1428
F: 978.465.2640
www.vineassociates.net

CIVIL ENGINEER

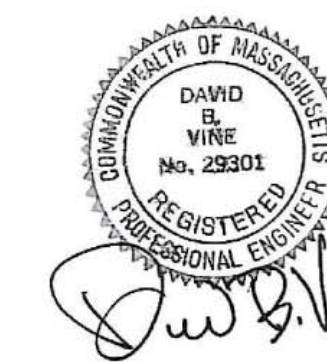
Simpson Gumpertz & Heger

41 Seyon Street
Building 1, Suite 500
Waltham, MA 02453

781.907.9000 Main
781.907.9009 Fax

STRUCTURAL ENGINEER

STAMP



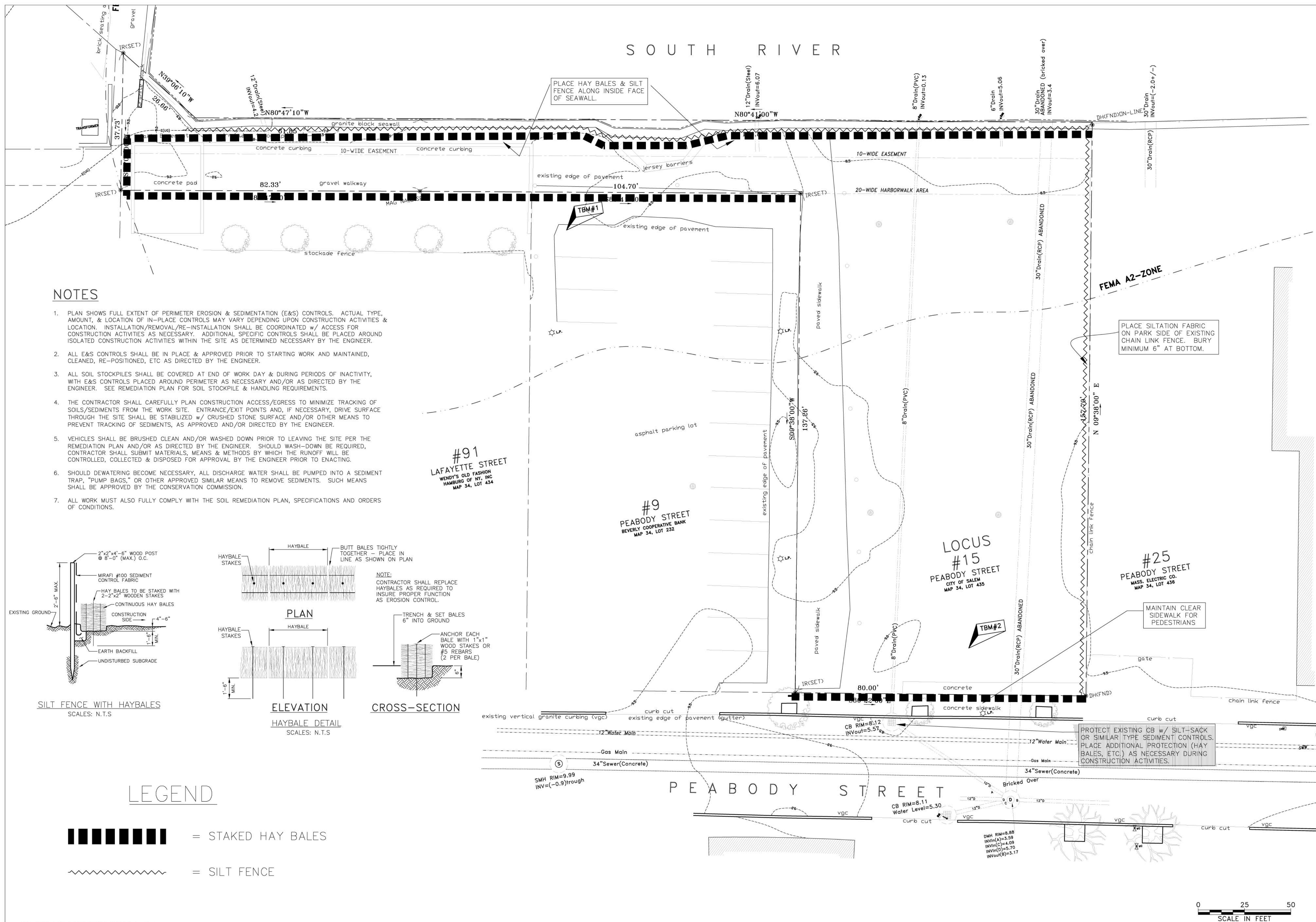
DECEMBER 10, 2008 - Bid Documents

PROJECT NUMBER
0803



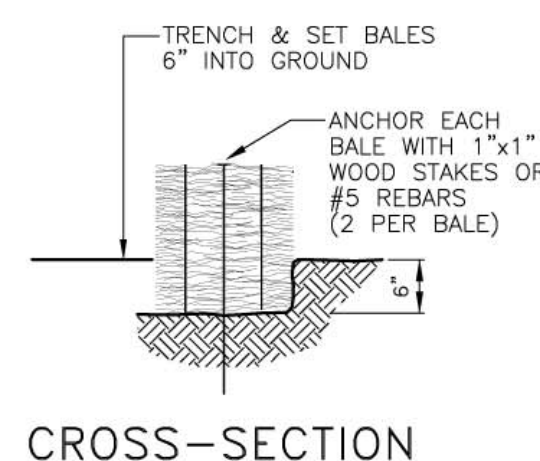
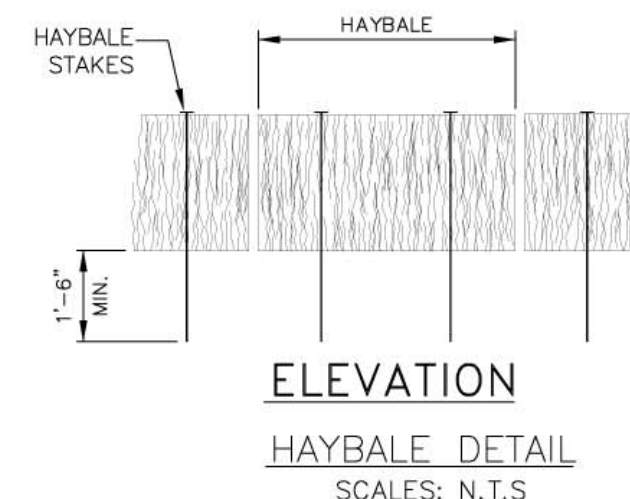
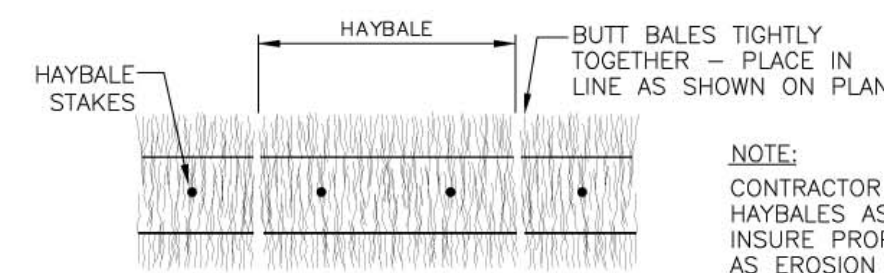
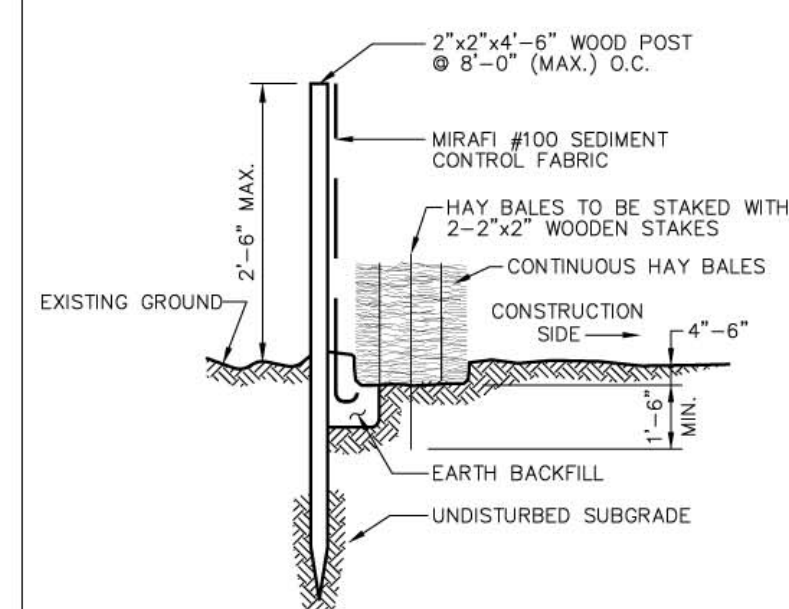
Erosion & Sediment
Control Plan

C3



NOTES

1. PLAN SHOWS FULL EXTENT OF PERIMETER EROSION & SEDIMENTATION (E&S) CONTROLS. ACTUAL TYPE, AMOUNT, & LOCATION OF IN-PLACE CONTROLS MAY VARY DEPENDING UPON CONSTRUCTION ACTIVITIES & LOCATION. INSTALLATION/REMOVAL/RE-INSTALLATION SHALL BE COORDINATED w/ ACCESS FOR CONSTRUCTION ACTIVITIES AS NECESSARY. ADDITIONAL SPECIFIC CONTROLS SHALL BE PLACED AROUND ISOLATED CONSTRUCTION ACTIVITIES WITHIN THE SITE AS DETERMINED NECESSARY BY THE ENGINEER.
2. ALL E&S CONTROLS SHALL BE IN PLACE & APPROVED PRIOR TO STARTING WORK AND MAINTAINED, CLEANED, RE-POSITIONED, ETC AS DIRECTED BY THE ENGINEER.
3. ALL SOIL STOCKPILES SHALL BE COVERED AT END OF WORK DAY & DURING PERIODS OF INACTIVITY, WITH E&S CONTROLS PLACED AROUND PERIMETER AS NECESSARY AND/OR AS DIRECTED BY THE ENGINEER. SEE REMEDIATION PLAN FOR SOIL STOCKPILE & HANDLING REQUIREMENTS.
4. THE CONTRACTOR SHALL CAREFULLY PLAN CONSTRUCTION ACCESS/EGRESS TO MINIMIZE TRACKING OF SOILS/SEDIMENTS FROM THE WORK SITE. ENTRANCE/EXIT POINTS AND, IF NECESSARY, DRIVE SURFACE THROUGH THE SITE SHALL BE STABILIZED w/ CRUSHED STONE SURFACE AND/OR OTHER MEANS TO PREVENT TRACKING OF SEDIMENTS, AS APPROVED AND/OR DIRECTED BY THE ENGINEER.
5. VEHICLES SHALL BE BRUSHED CLEAN AND/OR WASHED DOWN PRIOR TO LEAVING THE SITE PER THE REMEDIATION PLAN AND/OR AS DIRECTED BY THE ENGINEER. SHOULD WASH-DOWN BE REQUIRED, CONTRACTOR SHALL SUBMIT MATERIALS, MEANS & METHODS BY WHICH THE RUNOFF WILL BE CONTROLLED, COLLECTED & DISPOSED FOR APPROVAL BY THE ENGINEER PRIOR TO ENACTING.
6. SHOULD DEWATERING BECOME NECESSARY, ALL DISCHARGE WATER SHALL BE PUMPED INTO A SEDIMENT TRAP, "PUMP BAGS," OR OTHER APPROVED SIMILAR MEANS TO REMOVE SEDIMENTS. SUCH MEANS SHALL BE APPROVED BY THE CONSERVATION COMMISSION.
7. ALL WORK MUST ALSO FULLY COMPLY WITH THE SOIL REMEDIATION PLAN, SPECIFICATIONS AND ORDERS OF CONDITIONS.



LEGEND

██████████ = STAKED HAY BALES

~~~~~ = SILT FENCE