

15 PEABODY STREET

Salem, MA

City of Salem

Salem City Hall
93 Washington Street
Salem, MA 01970
P: 978.745.9595

TEAM

landworks>studio^{INC.}

112 Shawmut Avenue - Studio 6B
Boston, MA 02118
P: 617.426.3030
F: 617.426.3033

10 Derby Square, 4th Floor
Salem, MA 01970
P: 617.426.3030
F: 617.426.3033
www.landworks-studio.com

LANDSCAPE ARCHITECT

utile

30 Summer Street
Boston, MA 02110
P: 617.423.7200
F: 617.423.1414
www.utiledesign.com

URBAN DESIGN

Vine

ASSOCIATES, INC.
372 Merrimac Street
Newburyport, MA 01950
P: 978.465.1428
F: 978.465.2640
www.vineassociates.net

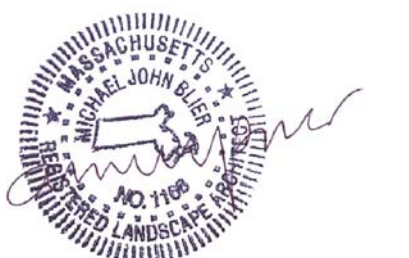
CIVIL ENGINEER

Simpson Gumpertz & Heger

41 Seyon Street
Building 1, Suite 500
Waltham, MA 02453
781.907.9000 Main
781.907.9009 Fax

STRUCTURAL ENGINEER

STAMP



Decemer 10, 2008 - Bid Documents

PROJECT NUMBER
0803

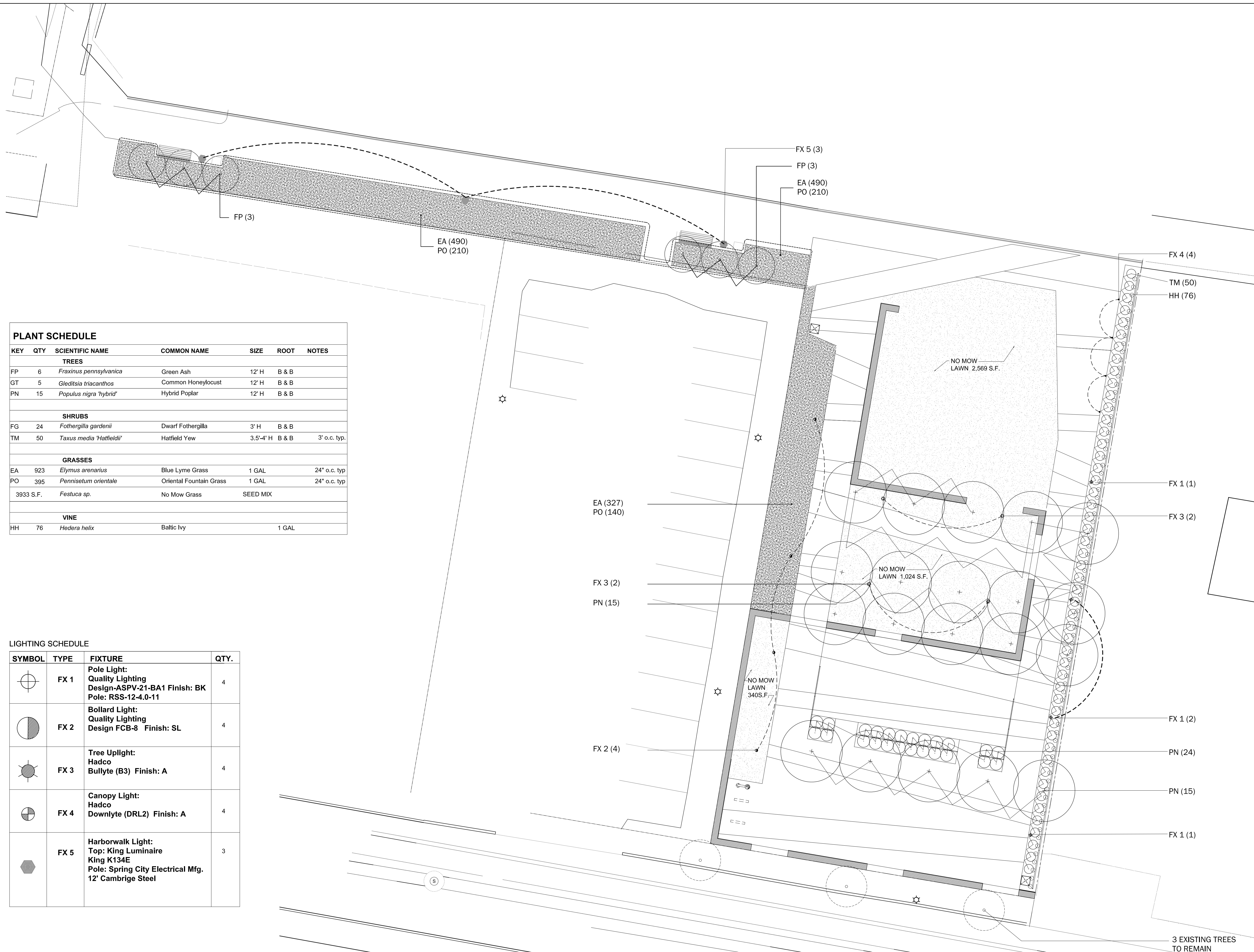
0 3' 9' 18'

SCALE: 3/32" = 1'-0"



15 Peabody Street
Planting Plan

L1.4



PLANT SCHEDULE

KEY	QTY	SCIENTIFIC NAME	COMMON NAME	SIZE	ROOT	NOTES
TREES						
FP	6	<i>Fraxinus pennsylvanica</i>	Green Ash	12' H	B & B	
GT	5	<i>Gleditsia triacanthos</i>	Common Honeylocust	12' H	B & B	
PN	15	<i>Populus nigra 'hybrid'</i>	Hybrid Poplar	12' H	B & B	
SHRUBS						
FG	24	<i>Fothergilla gardenii</i>	Dwarf Fothergilla	3' H	B & B	
TM	50	<i>Taxus media 'Hatfieldii'</i>	Hatfield Yew	3.5'-4' H	B & B	3' o.c. typ.
GRASSES						
EA	923	<i>Elymus arenarius</i>	Blue Lyme Grass	1 GAL		24" o.c. typ
PO	395	<i>Pennisetum orientale</i>	Oriental Fountain Grass	1 GAL		24" o.c. typ
		3933 S.F.	<i>Festuca sp.</i>	No Mow Grass	SEED MIX	
VINE						
HH	76	<i>Hedera helix</i>	Baltic Ivy	1 GAL		

LIGHTING SCHEDULE

SYMBOL	TYPE	FIXTURE	QTY.
	FX 1	Pole Light: Quality Lighting Design-ASPV-21-BA1 Finish: BK Pole: RSS-12-4.0-11	4
	FX 2	Bollard Light: Quality Lighting Design FCB-8 Finish: SL	4
	FX 3	Tree Uplight: Hadco Bullyte (B3) Finish: A	4
	FX 4	Canopy Light: Hadco Downlyte (DRL2) Finish: A	4
	FX 5	Harborwalk Light: Top: King Luminaire King K134E Pole: Spring City Electrical Mfg. 12' Cambridge Steel	3

3 EXISTING TREES
TO REMAIN