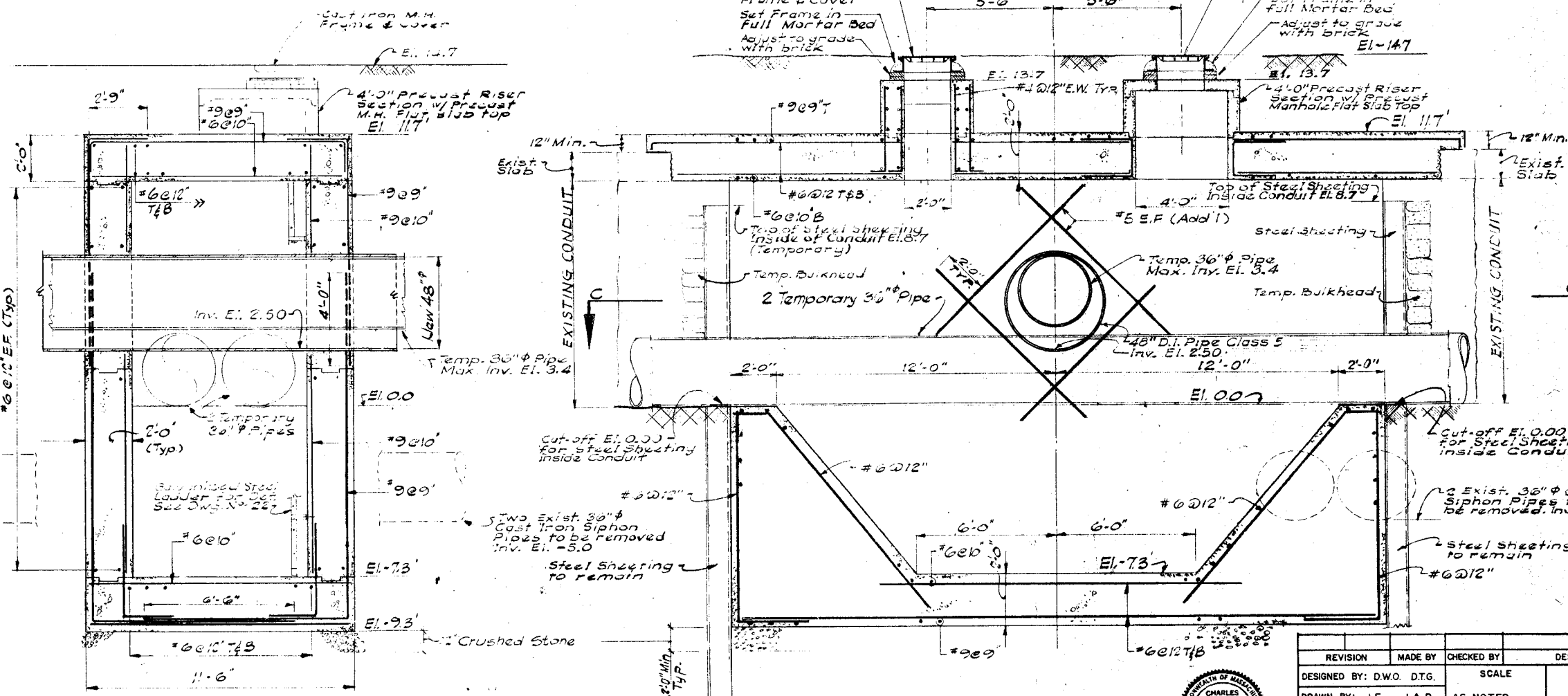
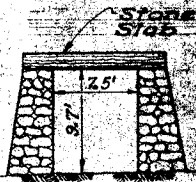


SECTION C-C
Scale: 3/8" = 1'-0"

SOUTH RIVER CONDUIT ROOF PLAN
Scale: 3/8" = 1'-0"
(Sta. 0+30) Pay Item 266

Steel sheeting to remain in place, cut off at inv. of exist. South River Conduit. Cut-off Elav. 8.7 Outside Conduit Walls.

- NOTES:**
1. Assumed Cross-Section of Existing South River Conduit to be removed. (No Scale)
 2. For Layout of Area, see Dwg. #19
 3. All temporary Sanitary & Drainage Pipes to be Steel of suitable gauge or other material as approved by the Engineer.
 4. For Ductile Iron Pipe Material between Sta. 0+00 and Sta. 0+06 see sh 19 and Section 266 of the Specifications. Concrete pipe see Section 102. Ductile Iron shall be provided between Planes 2 feet outside sheeting, North side to 2 feet outside sheeting, South side. Balance of pipe material between Sta. 0+00 to Sta. 0+06 shall be reinforced concrete pipe Class 5. Determination of the outside dimensions of the existing gravity walls shall be made by means of a fast pit on each side of the Conduit. See Section 114 of the Specifications.



SECTION A-A
Scale: 3/8" = 1'-0"

SECTION B-B
Scale: 3/8" = 1'-0"

REVISION	MADE BY	CHECKED BY	DESCRIPTION
DESIGNED BY: D.W.O. D.T.G.			SCALE
DRAWN BY: J.F. J.A.B.			AS NOTED
CHECKED BY: E.P.D.			
CONTRACT NO. B		C.E.M. NO. 2273	
APPROVED FOR C.E.M.			

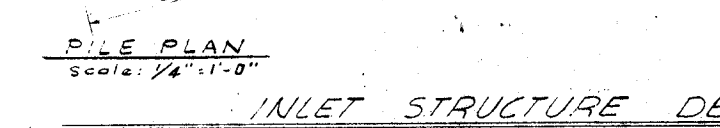
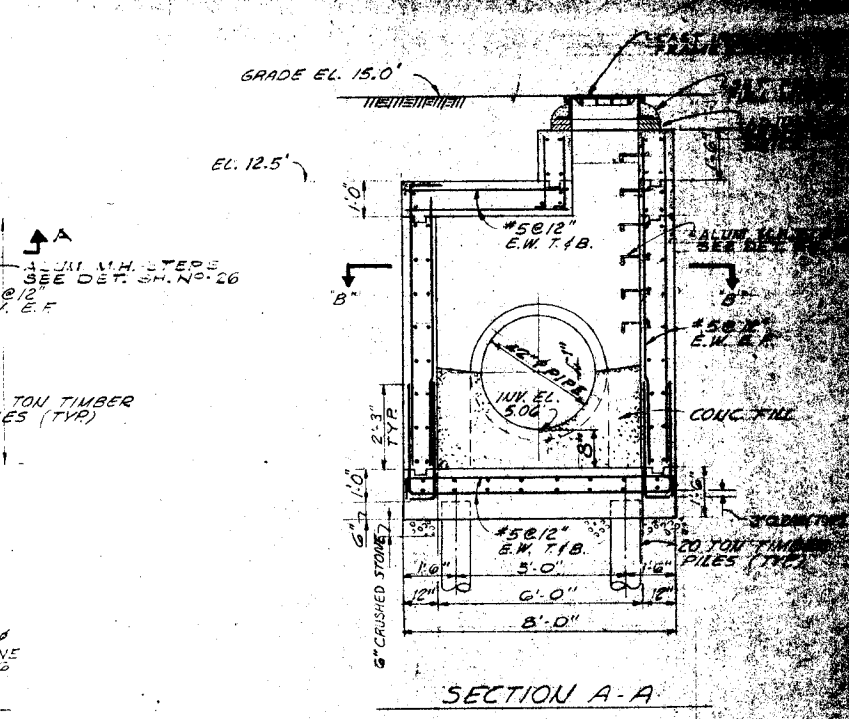
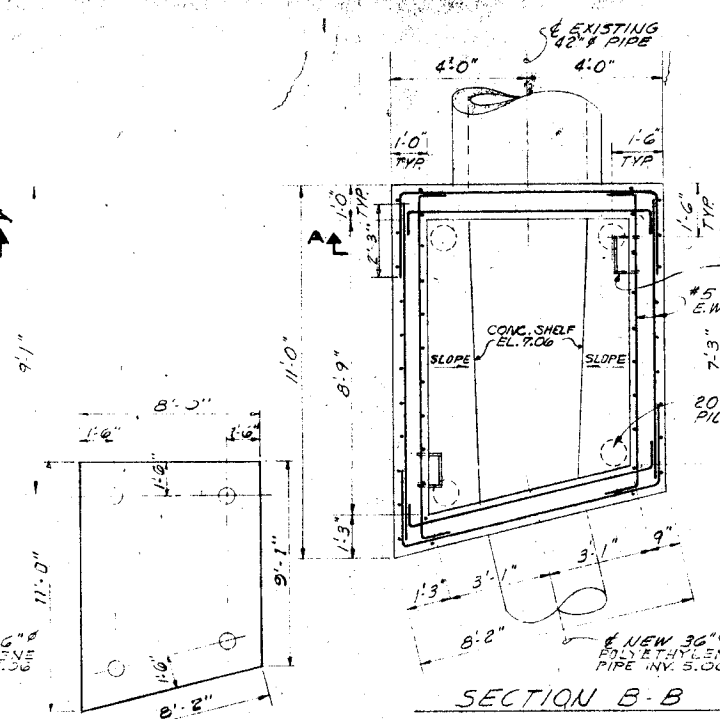
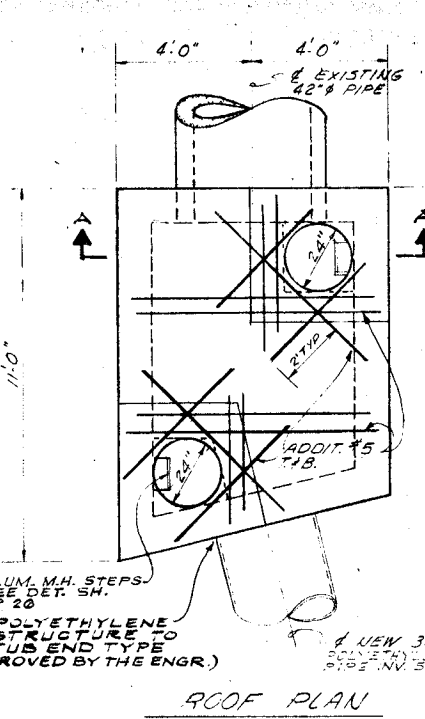
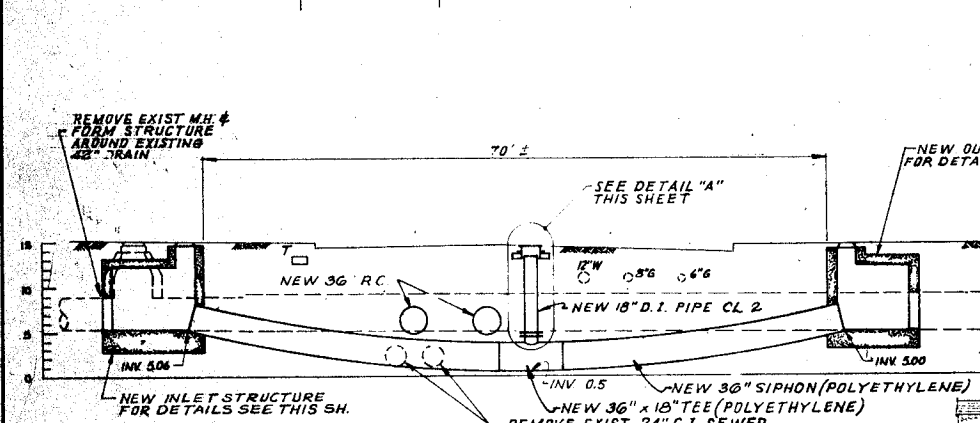
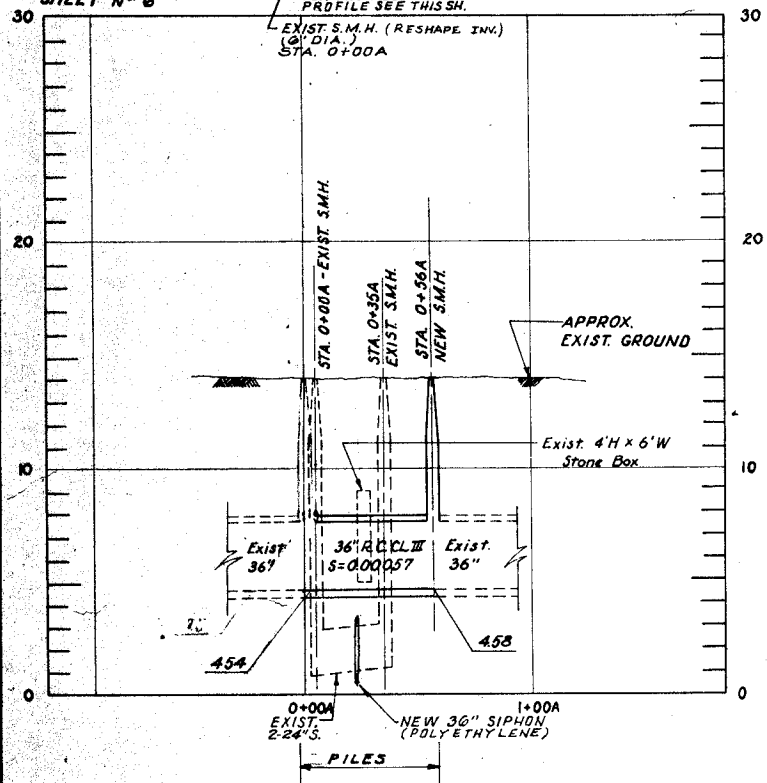
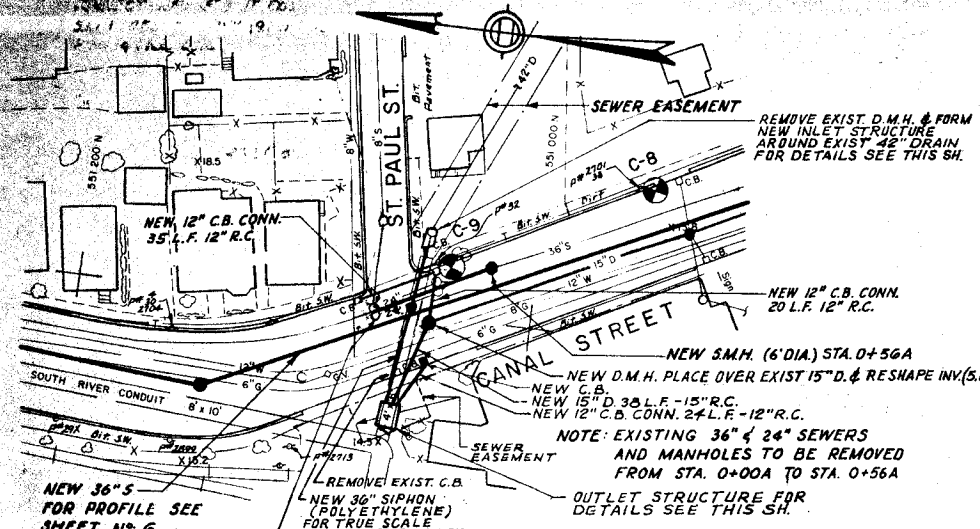
THIS PLAN HAS BEEN REVIEWED AND IS HEREBY CERTIFIED AS AN ACCURATE REPRESENTATION OF AS-BUILT CONDITIONS.
PHANTON Co., Inc.
GENERAL CONTRACTOR



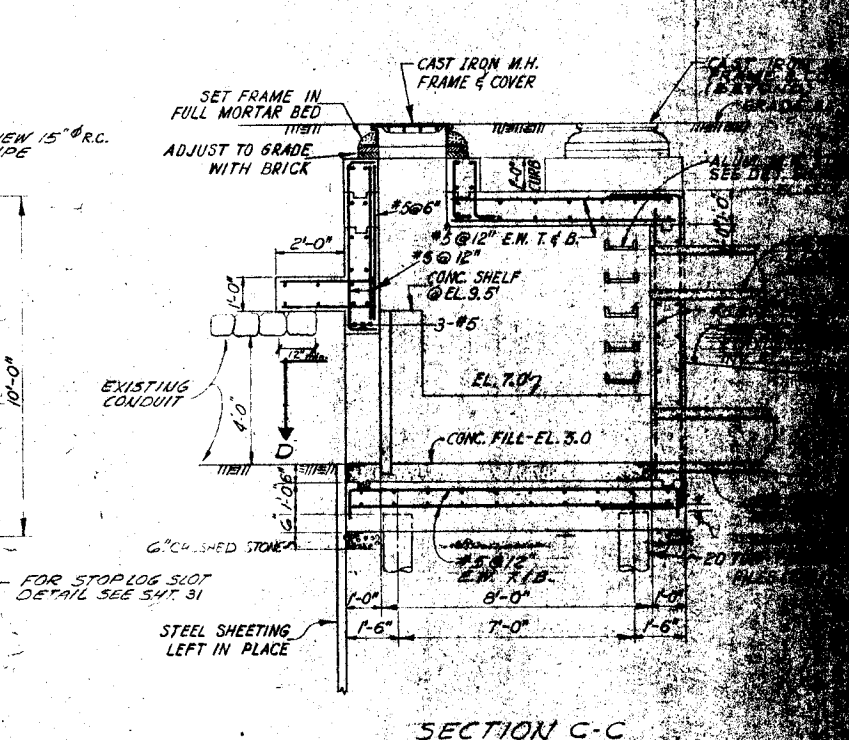
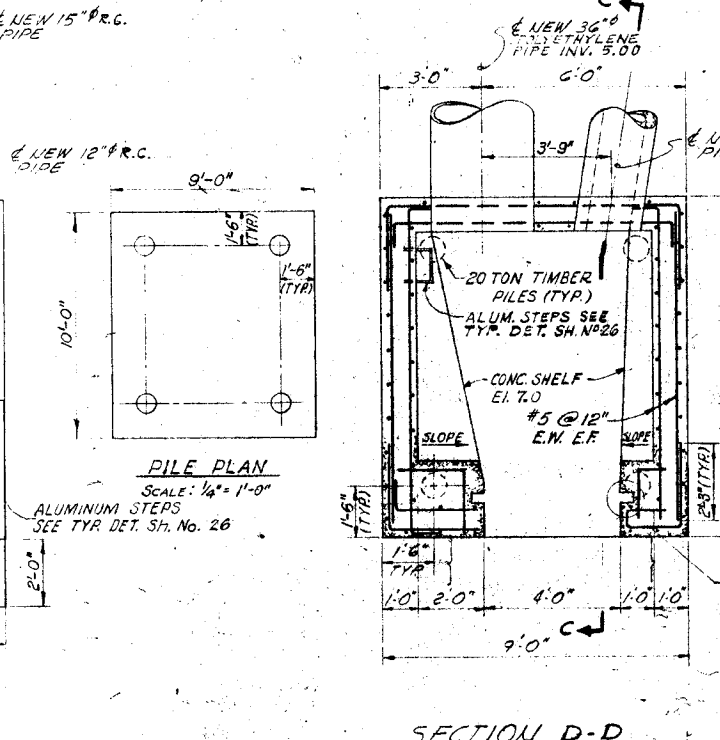
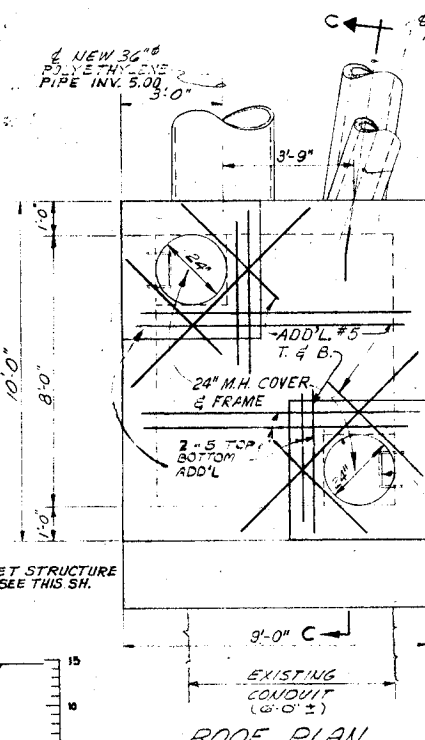
Richard A. Whalen

CITY OF SALEM, MASSACHUSETTS
SEWERAGE IMPROVEMENTS, PHASE
SOUTH RIVER CONDUIT
STRUCTURAL MODIFICATION (DOWNSTREAM)
SHEET B

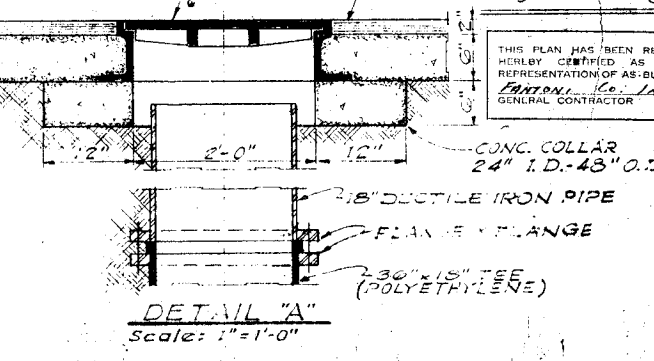
CE MAGUIRE, INC.
ARCHITECTS-ENGINEERS



INLET STRUCTURE DETAILS



OUTLET STRUCTURE DETAILS



THIS PLAN HAS BEEN REVIEWED AND IS HEREBY CERTIFIED AS AN ACCURATE REPRESENTATION OF AS-BUILT CONDITIONS.
FANTONI, Co., Inc.
 GENERAL CONTRACTOR

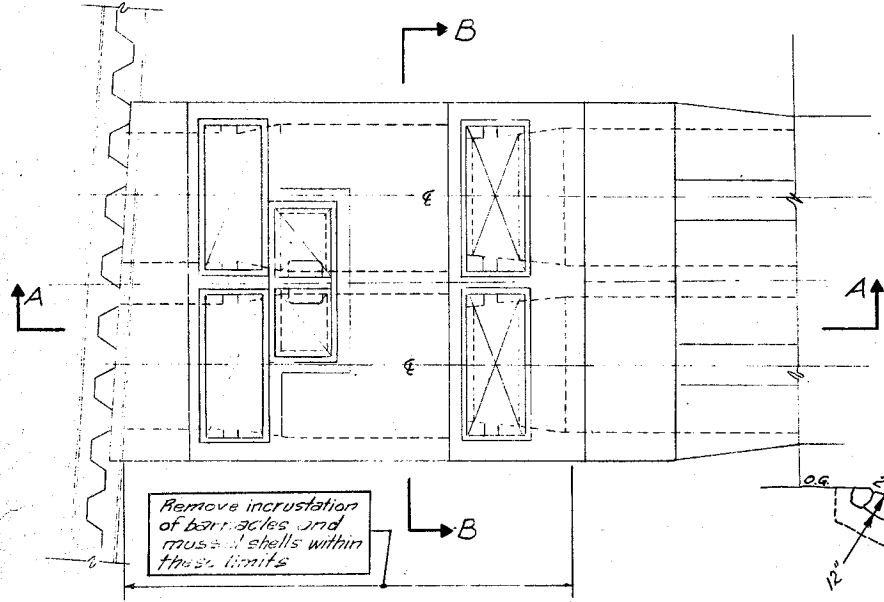


Richard A. Whalen

REVISION	MADE BY	CHECKED BY	DESCRIPTION
DESIGNED BY: D.T.G.	SCALE		
DRAWN BY: G.K.	HORIZ: 1"=40'		
CHECKED BY: E.P.D.	VERT: 1"=4'		
CONTRACT NO. B	C.E.M. NO. 2273		
APPROVED FOR C.E.M.	DATE		

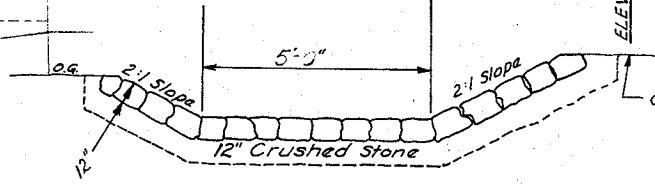


CITY OF SALEM, MASSACHUSETTS
 SEWERAGE IMPROVEMENTS
CANAL STREET DRAINAGE
CE MAGUIRE, INC.
 ARCHITECTS-ENGINEERS



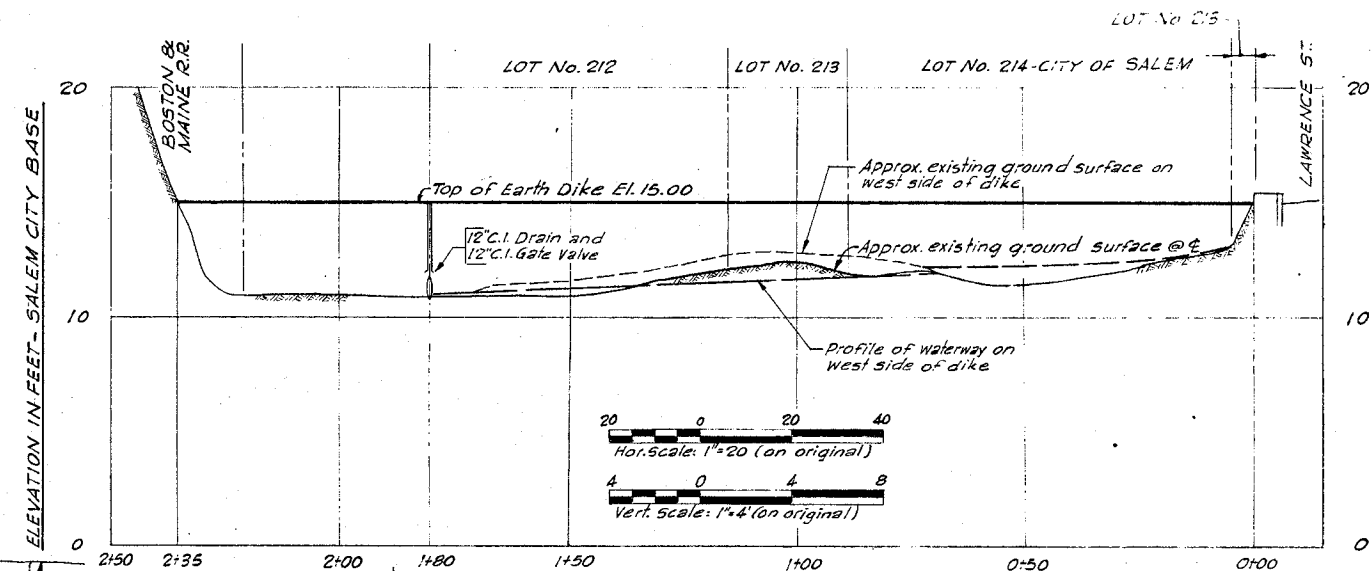
PLAN

Scale: 1/4" = 1'-0" (on original)

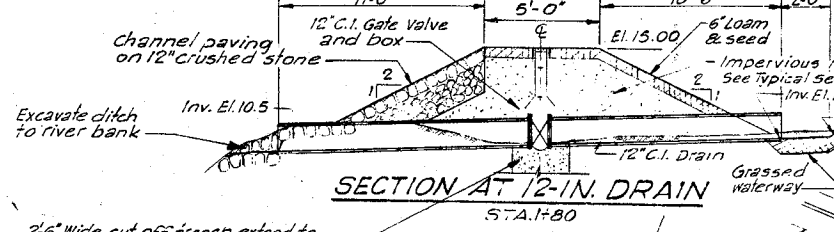


TYPICAL SECTION CHANNEL PAVING Between Railroad & Lawrence St.

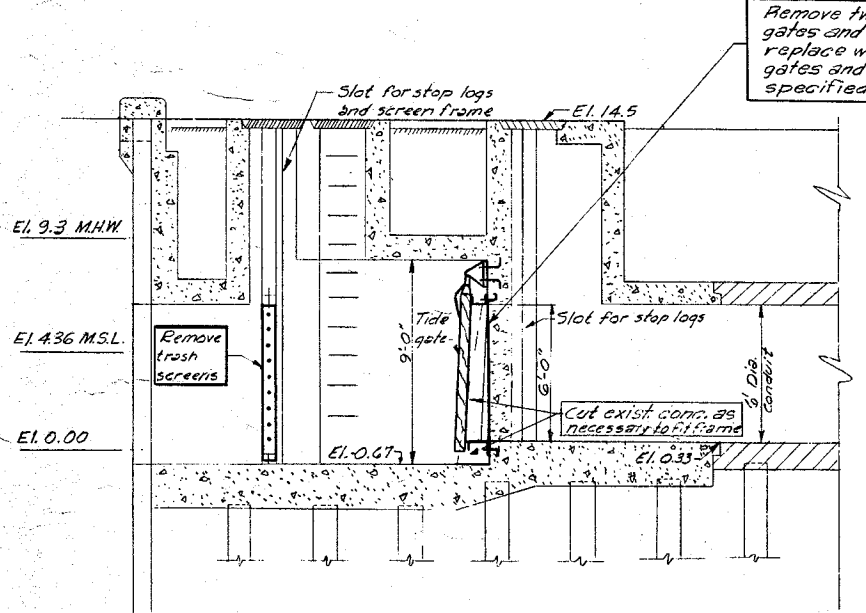
Scale: 1" = 4' (on original)



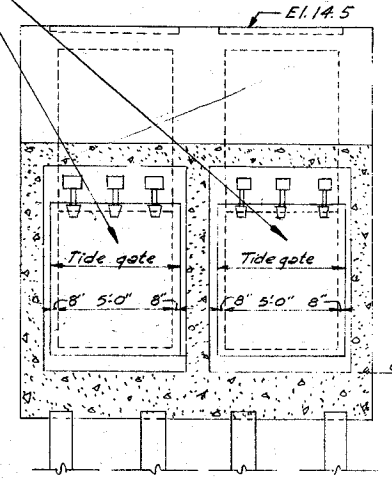
PROFILE - LAWRENCE ST. DIKE



2'-6" wide cut-off french extend to bottom of artificial fill as directed. Refill with impervious material.



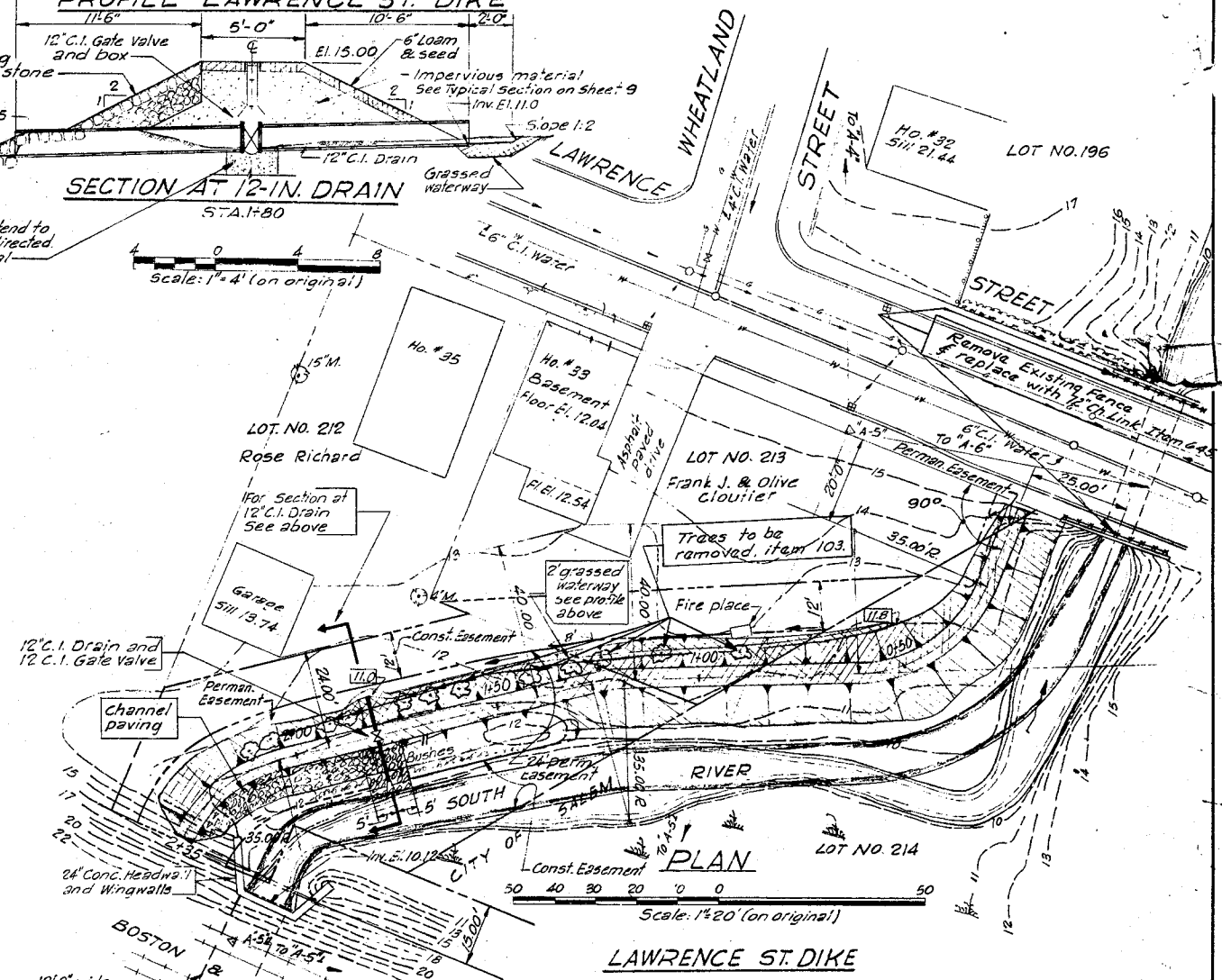
SECTION A-A



SECTION B-B

TIDE GATE CHAMBER

Scale: 1/4" = 1'-0" (on original)



LAWRENCE ST. DIKE

<p>PROPOSED FLOOD CONTROL PIPE CONDUIT, CHANNELS & PUMPING STATION SOUTH RIVER SALEM</p>		
<p>CONTRACT NO. 2782</p>	<p>TIDE GATES & LAWRENCE ST. DIKE</p>	<p>ACC. NO. 04784 - R</p>
<p>DEPARTMENT OF PUBLIC WORKS OF MASSACHUSETTS DIVISION OF WATERWAYS</p>		

PREPARED BY
CAMP, DRESSER & MCKEE
BOSTON, MASS.