

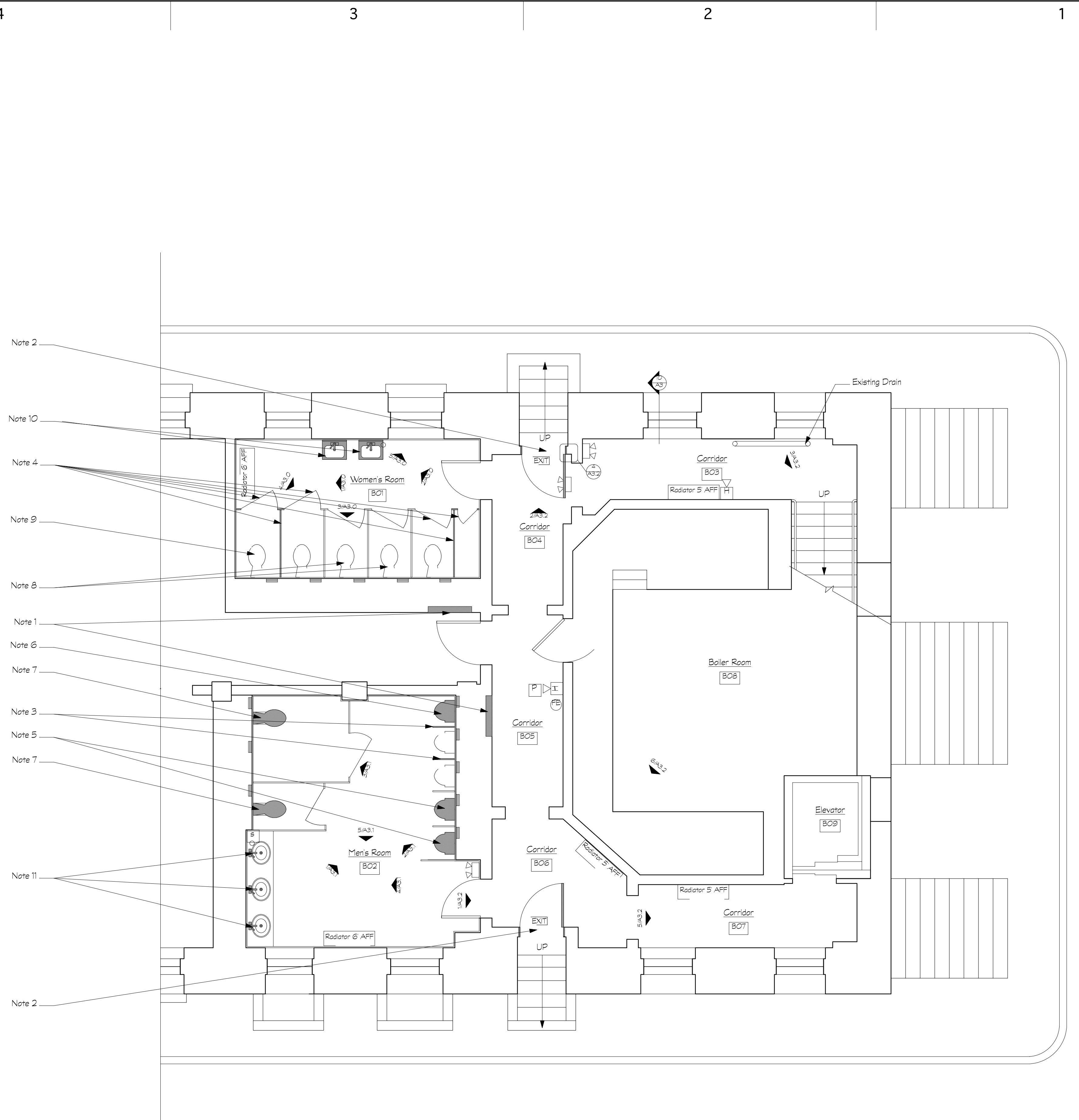
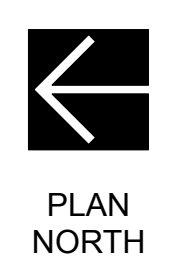
SALEM OLD TOWN HALL
BASEMENT IMPROVEMENTS
 SALEM, MA

Revisions	Date

Project: 426.0
 Drawn by: AF
 Check by: DG
 Date: April 14, 2009
 Scale: 1/4" = 1'-0"

Demo Plan

A1.0



1 Basement Demolition Floor Plan
 A1.0 Scale: 1/4" = 1'-0"

A1.0 Demo Plan Key Notes

1. Open up CMU wall for access to plumbing chase
2. Demo existing door, frame, and trim for replacement. Demo all 2x4 and other wood braces and associated hardware
3. Remove marble partitions, protect, save, and hand over to owner
4. Remove marble partitions, protect, save, and hand over to owner. Save doors for reuse
5. Demo existing urinal fixtures and flushometers. Prep existing supply and waste plumbing for direct replacement
6. Demo existing urinal fixture and flushometer. Prep for reconfiguring of supply and waste plumbing for new MAAB compliant urinal and flushometer.
7. Demo existing toilet fixture(s) and flushometer(s). Prep existing supply and waste plumbing for direct replacement
8. Prep existing supply and waste plumbing (from removed toilet fixtures) for direct replacement
9. Demo existing toilet fixture and flushometer. Prep for reconfiguring of supply and waste plumbing for new MAAB compliant sink and faucet.
10. Remove existing sinks and all appurtenances. Cut back and cap all existing supply and waste plumbing
11. Demo existing faucets and drains. Existing sinks and soap dispensers to remain

IF THIS SHEET IS NOT 24 X 36 IT IS A REDUCED SCALE PRINT - SCALE ACCORDINGLY

3"=1'-0"
 SCALE

1-1/2"=1'-0"
 SCALE

1"=1'-0"
 SCALE

6"
 1/2"=1'-0"
 SCALE

12
 1/4"=1'-0"
 SCALE

8
 1/4"=1'-0"
 SCALE

4
 1/4"=1'-0"
 SCALE

20
 1/8"=1'-0"
 SCALE

5 4 3 2 1

5 4 3 2 1

A

B

C

D

A

B

C

D

**SALEM OLD TOWN HALL
 BASEMENT IMPROVEMENTS
 SALEM, MA**

Revisions	Date

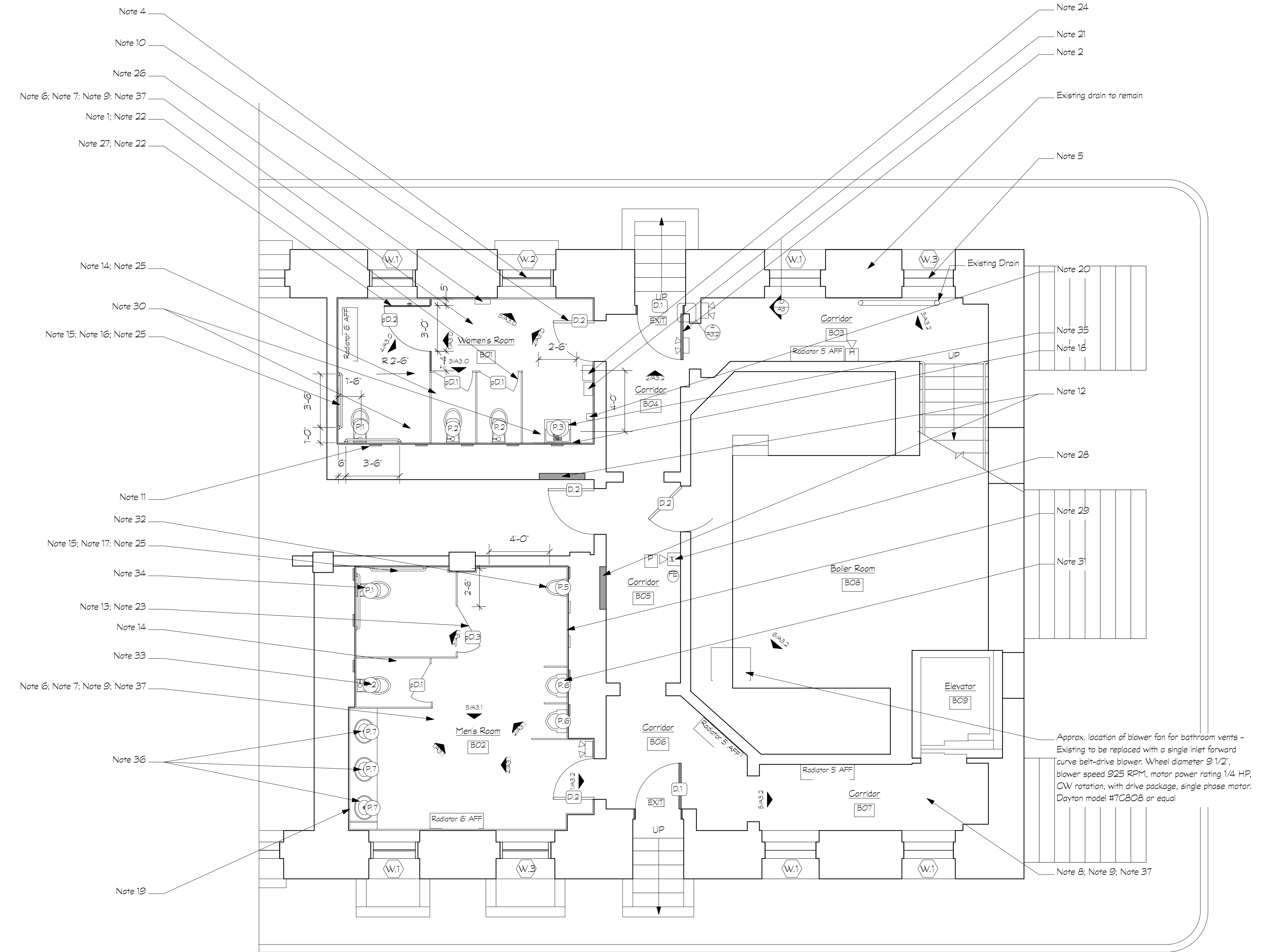
Project: 426.0
 Drawn by: AF
 Check by: DG
 Date: April 14, 2009
 Scale: 1/4" = 1'-0"

Basement Plan

A2.0



1 Basement Floor Plan
 A2.0 Scale: 1/4" = 1'-0"



Basement Plan Key Notes

1. Select from all existing toilet stall doors those that are in the best condition. Repair as necessary, refinish, and reinstall with new handles, latches, and strikers to match existing. Typ. See Div 10
 -See plan layout for orientation and direction of swing
2. Install new door, hardware, and frame. See Div 8
 -Replace damaged trim to match existing.
3. W1 - Remove existing window sash and hardware. Secure 1" rigid foam board to existing panel on outside of window. Clean, scrape, and paint window sash. Paint outside of glass black. Fasten window sash to frame with finish screws. See detail drawing 10/A-3.0; A-3.1; A-3.2
4. W2 - Remove existing window sash and hardware. Secure 1" rigid foam board to existing panel on outside of window. Replace broken panes w/ obscure vision glass to match existing. Clean, scrape, and paint window sash. Paint outside of glass black. Fasten window sash to frame with finish screws. See detail drawing 10/A-3.0; A-3.1; A-3.2
5. W3 - Demo existing interior wood panel. Remove existing window sash and hardware. Secure 1" rigid foam board to existing panel on outside of window. Replace broken panes w/ obscure vision glass to match existing. Clean, scrape, and paint window sash. Paint outside of glass black. Fasten window sash to frame with finish screws. See detail drawing 10/A-3.0; A-3.1; A-3.2
6. Chemically clean tile floor; Patch any holes in floor or damaged tiles with grout (colored to match surrounding materials). Typ.
7. Patch holes in floor from removed toilet fixtures and partitions with grout (colored to match surrounding materials)
8. Seal concrete floor. Typ.
9. Scrape and paint all exposed pipes, ducts, electrical conduit, etc. Typ.
10. Scrape and paint existing doors and trim. Typ.
11. Clean, scrape, and paint existing grills. Typ.
12. Patch wall where opened for access to plumbing chase with the following:
 -2 1/2" 24Ga. metal studs 16' o.c.
 -5/8" moisture, mold, and abuse resistant GWB (one side only) primed and painted to match adjacent finish
13. Reverse existing door swing. Install new hardware to comply with MAAB standards. See Div 10
14. Install toilet paper dispenser in each toilet stall. Typ. See Div 10
15. Install toilet paper dispenser in compliance with MAAB standards. See Div 10
16. Install grab bars in compliance with MAAB standards. See Div 10
17. Existing grab bars to remain
18. Install MAAB mirror. See Div 10
19. Existing mirror to remain
20. Install soap dispenser in compliance with MAAB standards. See Div 10
21. Install paper towel dispenser in compliance with MAAB standards. Typ. See Div 10
22. Install coat hook to each stall door. Typ. See Div 10
23. Install MAAB compliant coat hook to HC stall doors. See Div 10
24. Install fixed trash receptical. Typ. See Div 10
25. Install sanitary napkin receptical in each toilet stall. Typ. for Women's Room. See Div 10
26. Install sanitary napkin and tampon vending machine. See Div 10
27. New partition, door, and hardware to comply with MAAB standards. See Div 10
28. Test and review emergency systems for functionality and code compliance. Typ.
29. Re-cap plumbing lines from formerly removed urinal fixtures to stop leaks.
30. Cut back and cap existing supply and waste plumbing from removed toilet fixtures.
31. Install new urinal fixtures and flushometers. Connect to existing supply and waste plumbing. See Div 22
32. Install new MAAB compliant urinal fixture and flushometer. May require reconfiguration of existing supply and/or waste plumbing. See Div 22
33. Install new toilet fixture(s) and flushometer(s). Connect to existing supply and waste plumbing. See Div 22
34. Install new MAAB compliant toilet fixture and flushometer. May require reconfiguration of existing supply and/or waste plumbing. See Div 22
35. Install new MAAB sink and faucet. Reconfigure existing toilet supply and waste plumbing for new MAAB sink and faucet. See Div 22
36. Install new faucets and drains. Connect to existing supply and waste plumbing. See Div 22
37. Replace existing light switches and cover plates. Typ. See Div 26

IF THIS SHEET IS NOT 24 X 36 IT IS A REDUCED SCALE PRINT - SCALE ACCORDINGLY

1
3"=1'-0"
SCALE

2
1-1/2"=1'-0"
SCALE

3
1"=1'-0"
SCALE

6'
1/2"=1'-0"
SCALE

12
1/4"=1'-0"
SCALE

20
1/8"=1'-0"
SCALE

A
B
C
D

5 4 3 2 1

5 4 3 2 1