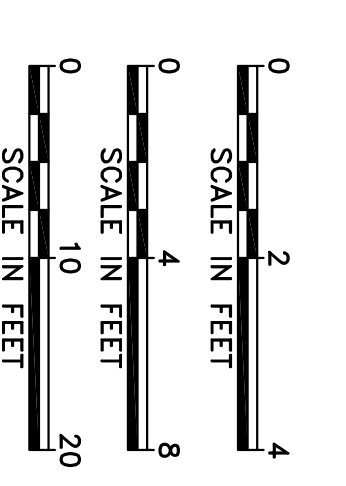
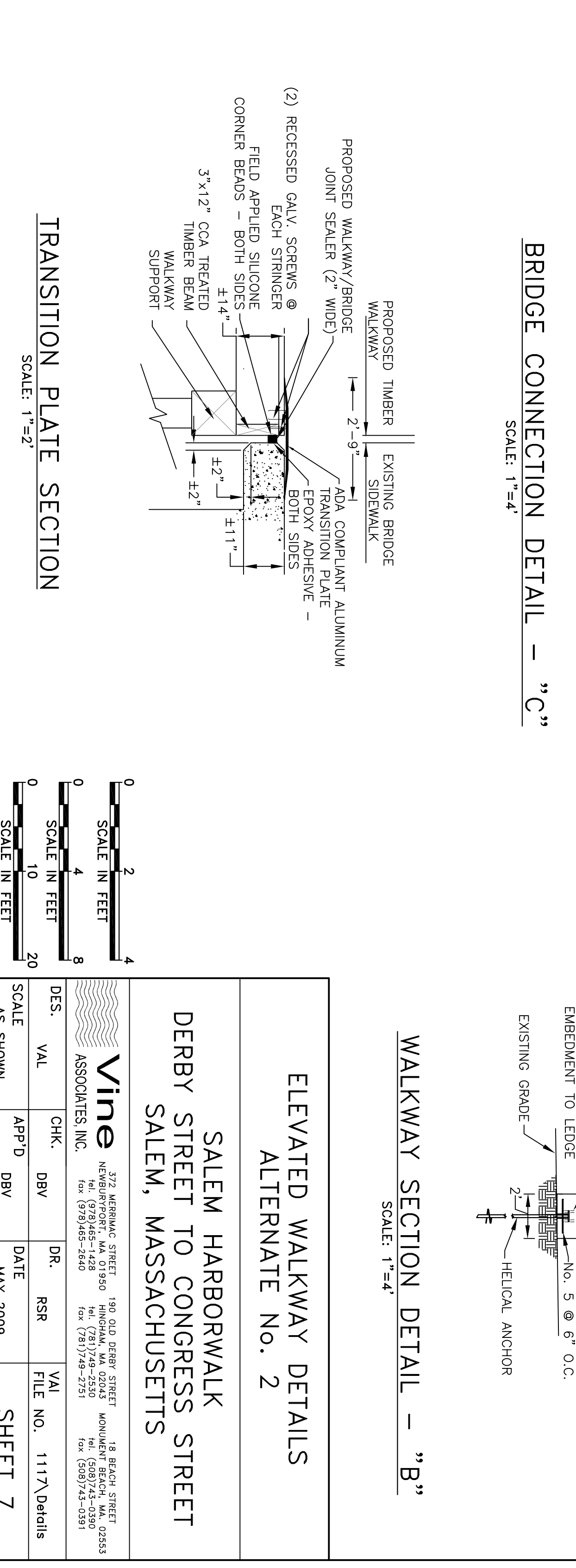
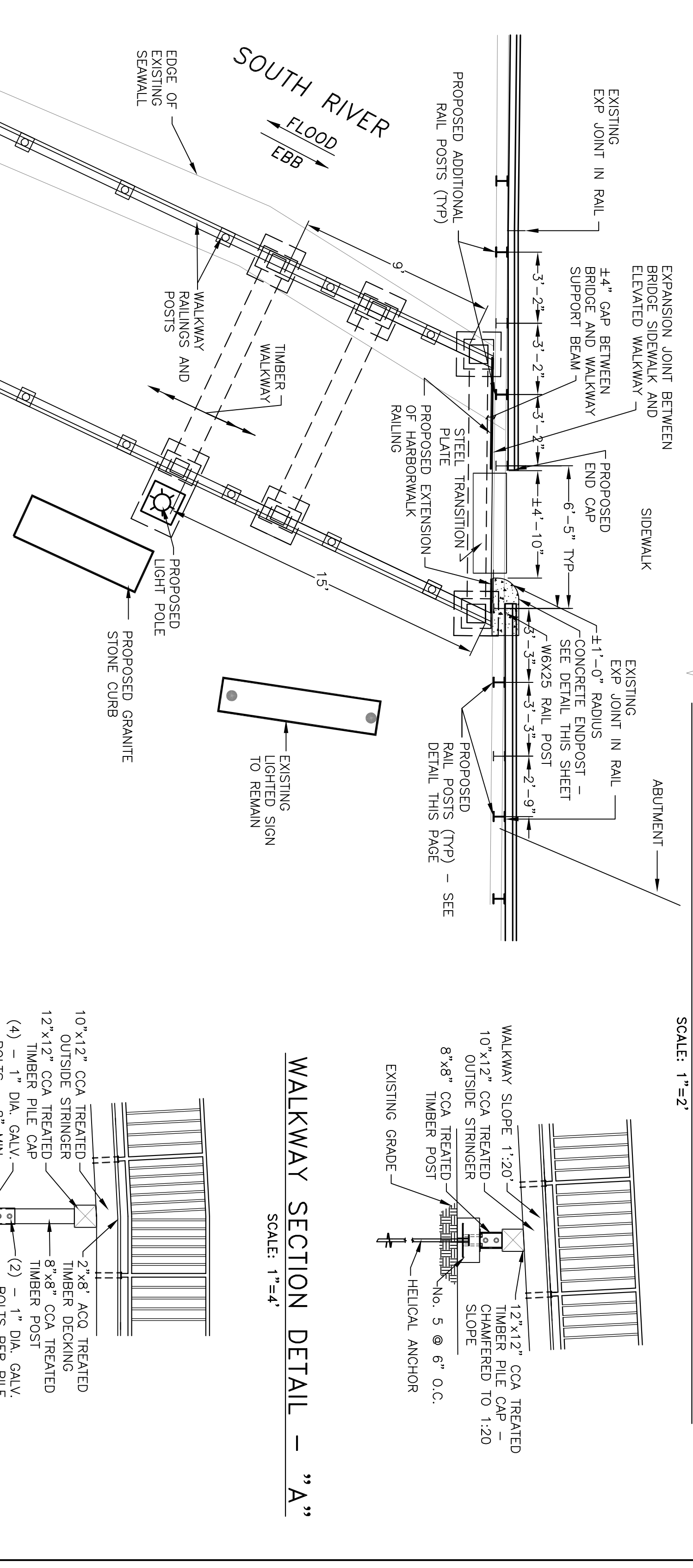
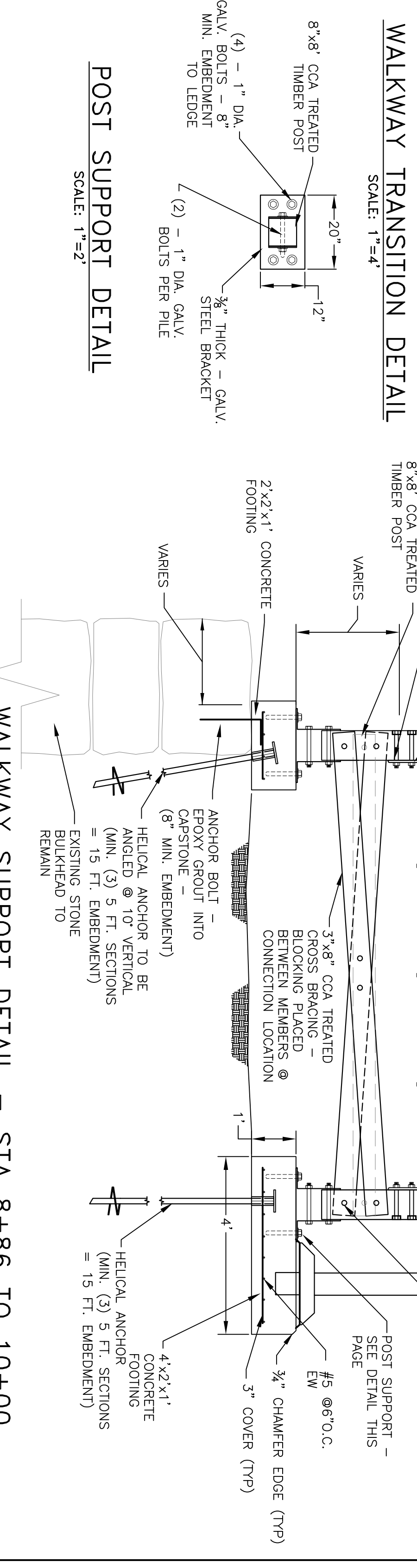
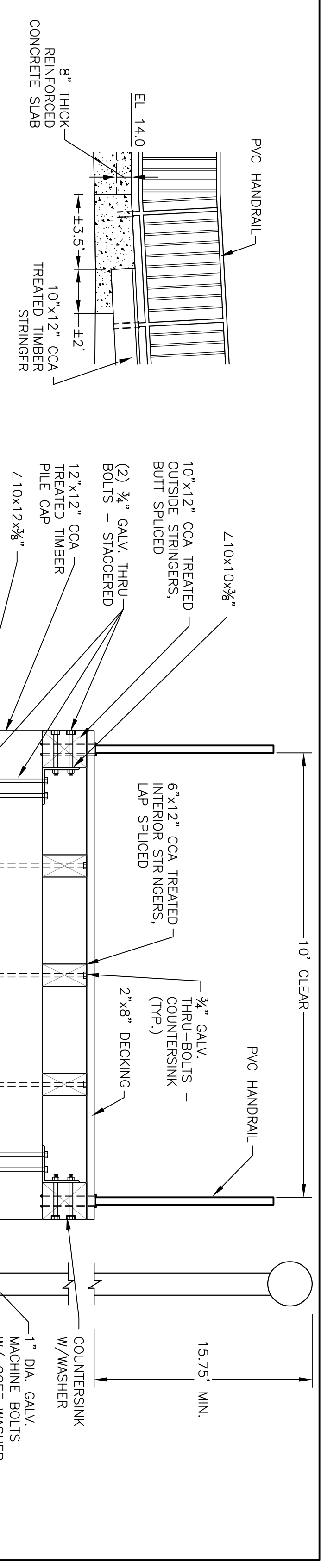
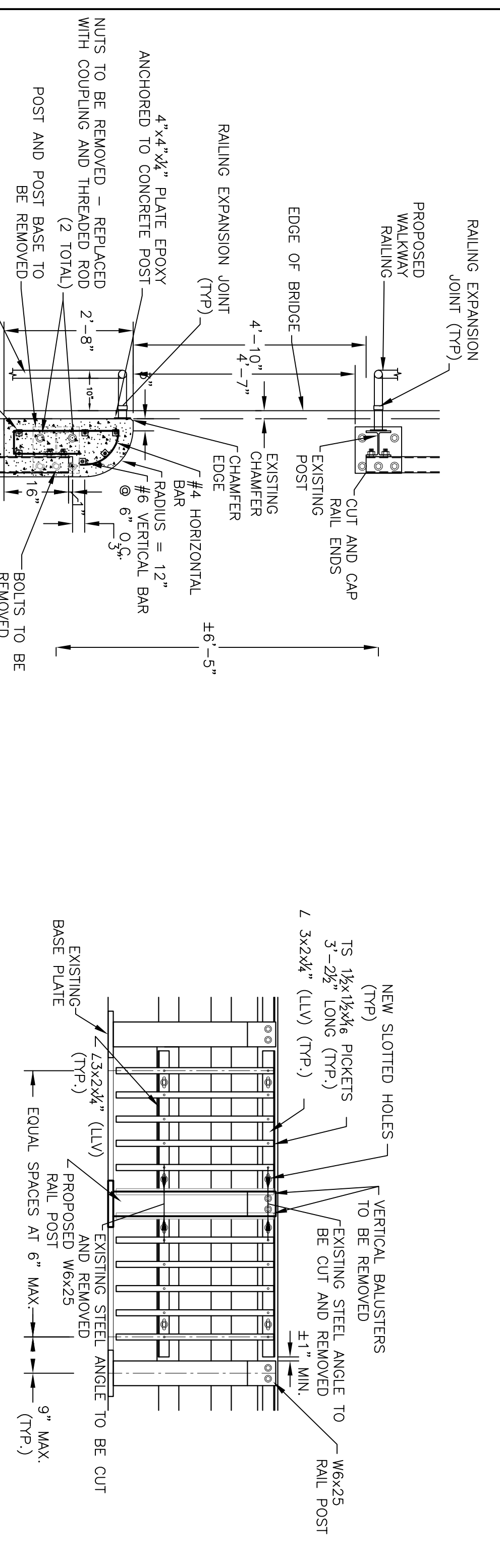
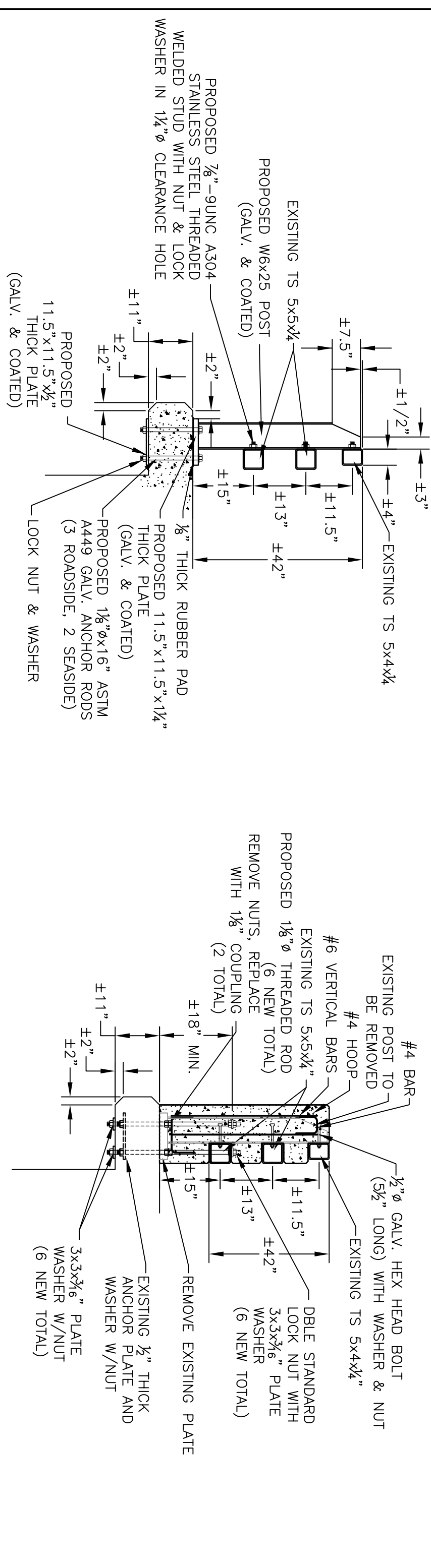


NOTES:
 1. REFER TO INFORMATIONAL DETAILS DRAWING - IN-1, WHICH CONTAIN MHD CONGRESS STREET BRIDGE CONSTRUCTION DRAWINGS (BRIDGE S-01-04) SHEETS 14 AND 15 OF 15, DATED 12-17-94, FOR ADDITIONAL RAILING AND CONNECTION DETAILS.
 2. ALL EXPOSED STEEL SHALL BE GALVANIZED AND PAINTED SIMILAR TO EXISTING.



WALKWAY SECTION DETAIL - "A"
 SCALE: 1"=4"

WALKWAY SECTION DETAIL - "B"
 SCALE: 1"=4"

**ELEVATED WALKWAY DETAILS
 ALTERNATE No. 2**

**SALEM HARBORWALK
 DERBY STREET TO CONGRESS STREET
 SALEM, MASSACHUSETTS**

DES.	VAL	CHK.	DBV	DR.	RSR	VAL
AS SHOWN						
SCALE	APP'D	DATE	DBV	MAY 2009		

Vine Associates, Inc.
 372 WINDHAM STREET, NEWBURYPORT, MA 01950
 141 OLD BRIDGE STREET, HINGHAM, MA 02043
 21 BRIDGE STREET, NORWICH, MA 01953