



*Greenlawn Cemetery*  
*West Chapel Slope Project*  
*Tuesday November 21, 2023*

*City of Salem Department of Public Services, Cemetery Division*  
*Martha Lyon Landscape Architecture, LLC*



*Master Plan*  
*for the*  
*Greenlawn Cemetery*  
*Salem, Massachusetts*

*Project Purpose:*

*To provide expanded interment  
options at  
historic Greenlawn Cemetery,  
per the recommendations of the  
2022 Master Plan*



*Martha Lyon Landscape Architecture, LLC*

*in collaboration with*

*Treesources-Consulting  
CHA Consulting, Inc.  
Fannin-Lehner Preservation Consultants  
High Fly Imaging, LLC*

*2022*



# *A Vision for Greenlawn*

*A commemorative landscape that  
preserves the natural world;  
honors those who were once part of that world;  
celebrates Salem's history;  
and is welcoming to all*





# *One Wish for the Future of Greenlawn...*

- Place a greater emphasis on caring for the trees and other natural features
- Provide more options for interment – all forms
- Provide ADA-compliant restrooms
- Restore the pathway and avenue signs
- Establish additional sources of funding for upkeep
- Increase the maintenance workforce so that the landscape can be better cared for










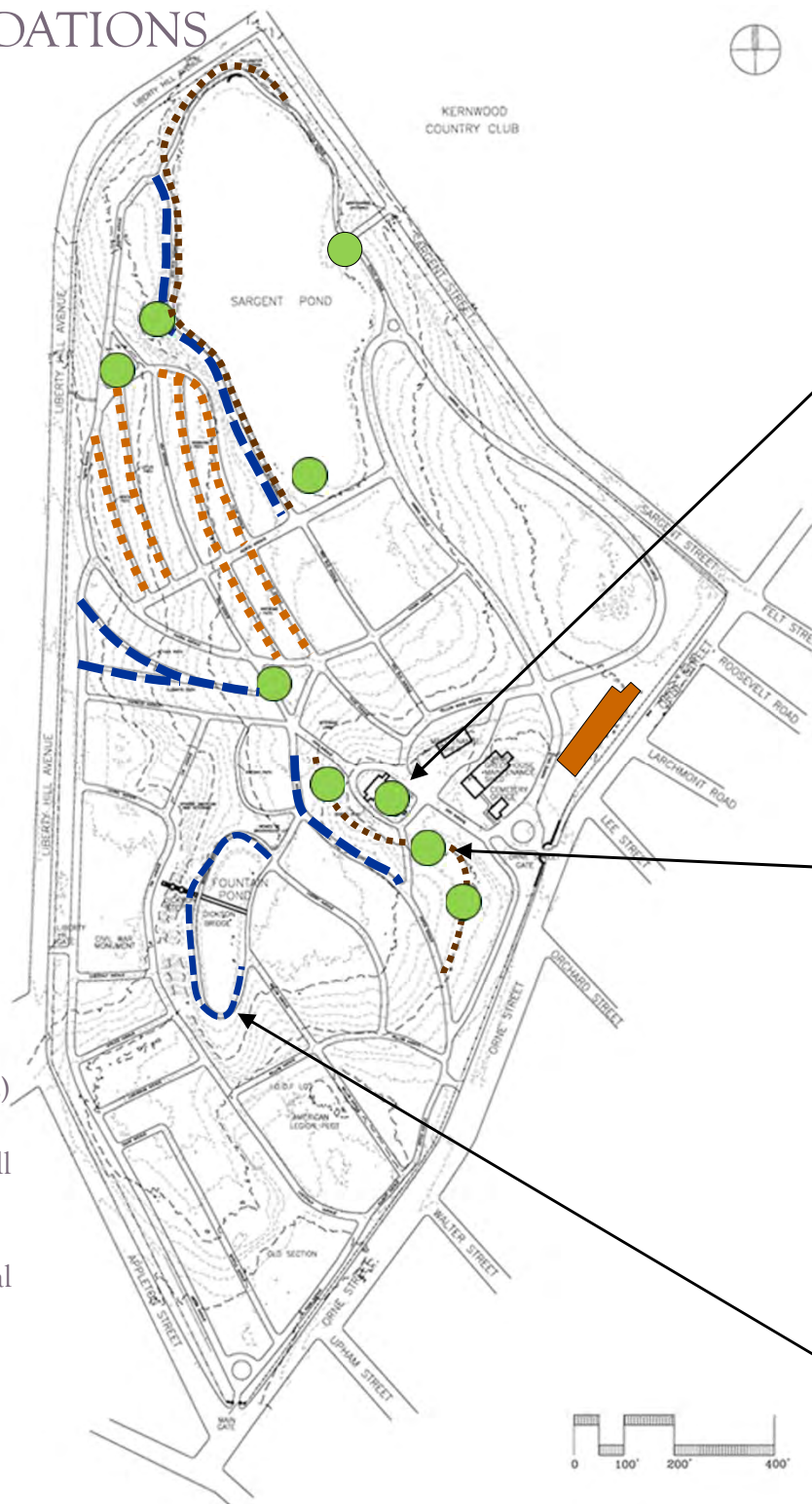
# LANDSCAPE RECOMMENDATIONS

## *Future Expansion*

- 14 Possible Sites
- Combination of Columbarium Walls (Niches for Cremation), In-ground Cremation Burials, In-ground Full Casket Burials and Scattering Gardens
- Potential Number of New Sites:
  - ~ 480 - 1,200 Columbarium Niches
  - ~ 600 In-ground Full Casket
  - ~ 1,170 In-ground Cremation
  - ~ Unlimited Scattering

### Legend

-  Columbarium Wall (Niches)
-  Closed Road/In-ground Full Casket Burial
-  In-ground Full Casket Burial
-  Closed Road/In-ground Cremation Burial
-  Scattering Garden Path





# *Why the West Chapel Slope?*

- Previously undeveloped
- Proximity to a prominent historic feature – the Dickson Chapel
- Opportunity to improve the Chapel setting
- Long views to the west and north – over picturesque areas
- Proximity to circulation routes and parking
- Ability to hold several interment types within one area



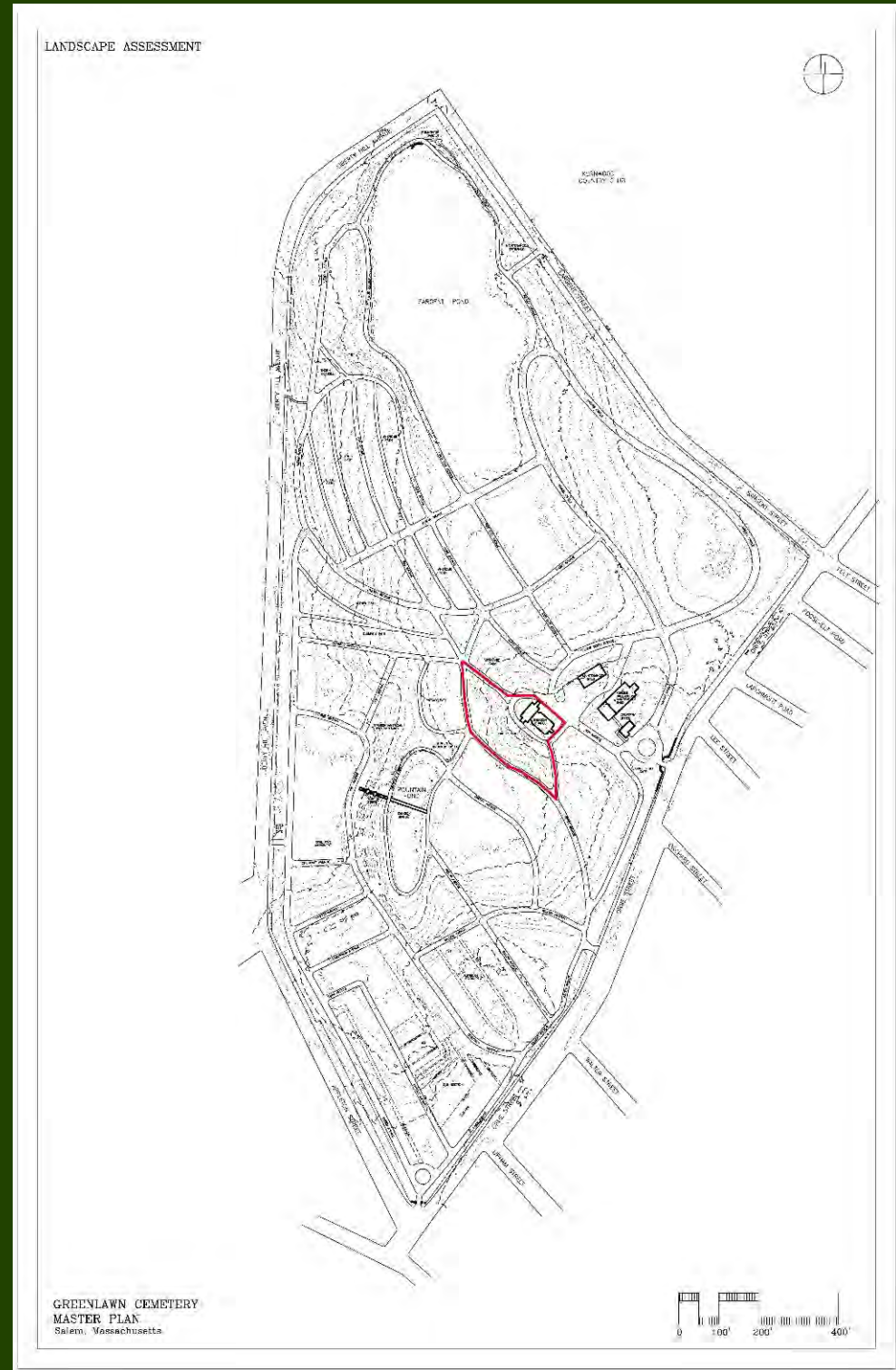
# *Program*

- Develop multiple options for interment
- Emphasize cremation burials
- Incorporate gathering space(s)
- Provide ADA-compliant access to interment sites
- Maintain and enhance views of the Dickson Chapel
- Protect existing trees
- Cover the cost of construction with interment fees  
(balance potential revenue with cost to build)



# Topographical Survey

- Precise grades to 1'-0"
- Tree locations
- Roads and paths
- Existing subsurface drainage



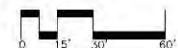


# Tree Assessment

1. 26" catalpa: fair to good
2. 8" linden: good
3. 8 " crabapple: fair
4. 9" crabapple: poor to fair- bittersweet
5. 10" mt ash: poor - canker, remove
6. 11" crabapple: poor to fair
7. 12" crabapple: poor to fair
8. 9" linden: poor to fair -remove
9. Multi-stem elm: poor structure - remove
10. 22" hemlock: poor structure - remove
11. 6" cork tree: good
12. 2 stem cornus mas: fair
13. 2 stem cornus mas: fair
14. 19" red oak: fair- poor shape and structure - remove
15. 15" white cedar: good
16. 14" white cedar: good
17. 18" hemlock: poor - remove
18. Multi-stem taxus: fair
19. Multi-stem taxus: fair to good
20. Multi-stem taxus: fair to good
21. Multi-stem taxus: fair to good
22. Multi-stem crabapple: good
23. 30" Norway maple: fair - remove
24. 2 stem crabapple: poor - remove
25. 30" elm: poor structure, threatens chapel - remove
26. 19" Norway maple: fair - remove
27. 17" Norway maple: fair - remove
28. 16" Norway maple: fair - remove
29. Multi-stem taxus: fair to good
30. Multi-stem taxus: fair to good
31. Multi-stem taxus: fair to good
32. Multi-stem taxus: fair to good
33. Multi-stem amur honeysuckle: good
34. 12" crabapple: fair
35. Multi-stem crabapple: fair to good
36. Multi-stem european spindle tree: good
37. Multi-stem beauty bush: good
38. 10" pin cherry: fair
39. 9" dogwood: poor – remove



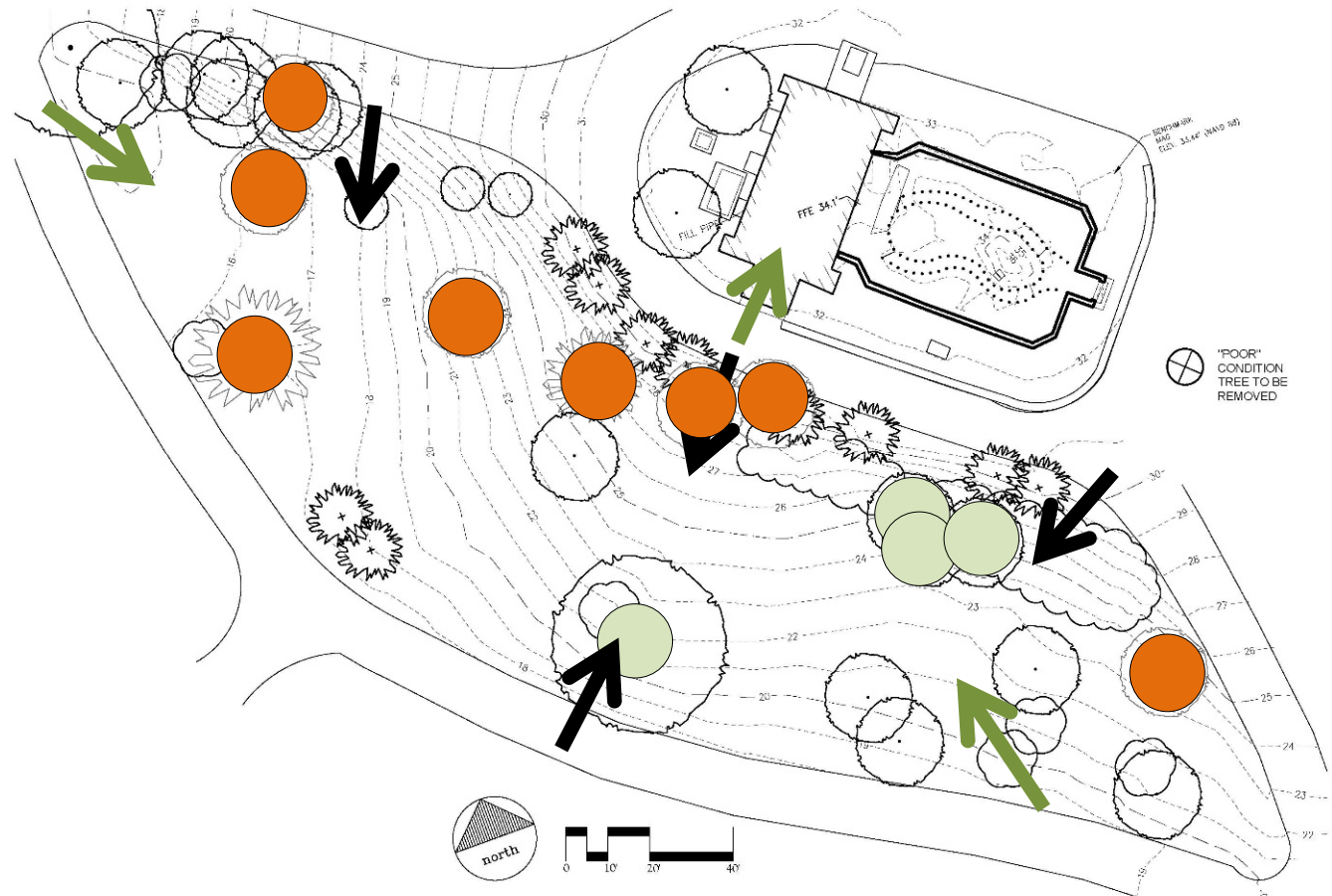
C. WEST CHAPEL SLOPE TREE INVENTORY





## WEST CHAPEL SLOPE

- Pleasing natural topography
- Pleasing views from Chapel Avenue looking westward, down the slope and over the oldest cemetery sections
- Undeveloped (no interments)
- Chapel is not visible from slope
- Introduction of interment and gathering spaces will require re-grading of the slope
- 39 existing trees
- Over 1/3 of trees in poor or poor/fair condition
- Nearly 1/4 of trees recommended for removal
- *Malus* and *Taxus* dominant genus – 41% of trees
- *Acer platanoides* – 14%
- Front door of chapel is cramped by existing roadway





#### DESIGN FEATURES:

- THREE INDIVIDUAL INTERMENT AREAS, EACH WITH 5' HIGH CURVED COLUMBARIUM WALL(S) DEFINING OVAL-SHAPED GATHERING SPACE
- ONE CENTRAL AREA LOCATED ON SLOPE BELOW THE DICKSON CHAPEL, ACCESSED VIA STEPS LEADING DOWN FROM THE CHAPEL; SEAT WALLS AT BASE OF STEPS; 5' HIGH COLUMBARIUM WALL AT OUTER EDGE OF GATHERING SPACE
- TWO AREAS LOCATED LOWER ON THE SLOPE, FLANKING THE CENTRAL AREA, EACH ACCESSED FROM ASPEN AVENUE VIA SEPARATE CURVING PATHWAYS; CURVED 5' HIGH COLUMBARIUM WALLS AT FRONT OF GATHERING SPACES
- SIGNIFICANT GRADING REQUIRED; 23 TREES REMOVED
- 18 NEW TREES AND MULTIPLE NEW SHRUBS PROPOSED
- SEATING WITHIN LOWER INTERMENT AREAS

#### INTERMENT TOTALS:

- 3 x 200 NICHES = 600 NICHES
- TOTAL NUMBER OF INTERMENTS = 600
- NO SCATTERING



SECTION A-A1 - NORTH ORIENTATION



Concept 1A



## DESIGN FEATURES:

- THREE INDIVIDUAL INTERMENT AREAS, EACH WITH CURVED COLUMBARIUM WALL(S) DEFINING OVAL-SHAPED GATHERING SPACE
- ONE CENTRAL AREA LOCATED ON SLOPE BELOW THE DICKSON CHAPEL, ACCESSED VIA STEPS LEADING DOWN FROM THE CHAPEL; PAVED 'FOYER' SET INTO ROADWAY TO EMPHASIZE CHAPEL ENTRANCE; SEAT WALLS AT TOP OF STEPS; TWIN 4' HIGH COLUMBARIUM WALLS AT BOTTOM OF STEPS
- TWO AREAS LOCATED LOWER ON THE SLOPE, FLANKING THE CENTRAL AREA, EACH ACCESSED FROM ASPEN AVENUE VIA SEPARATE CURVING PATHWAYS; 5' HIGH COLUMBARIUM WALLS AT BACK SIDE OF GATHERING SPACES
- SIGNIFICANT GRADING REQUIRED; 23 TREES REMOVED
- 11 NEW TREES AND MULTIPLE NEW SHRUBS PROPOSED
- SEATING WITHIN LOWER INTERMENT AREAS

## INTERMENT TOTALS:

- 2 x 200 NICHES = 400 NICHES
- 2 x 100 NICHES = 200 NICHES
- TOTAL NUMBER OF INTERMENTS = 600
- NO SCATTERING



SECTION A-A1 - NORTH ORIENTATION

Concept 1B



## DESIGN FEATURES:

- THREE INDIVIDUAL INTERMENT AREAS, EACH WITH 5' HIGH, DOUBLE-SIDED CURVED COLUMBARIUM WALL(S)
- SINGLE PATHWAY ACCESSED FROM NORTH AND SOUTH ENDS OF ASPEN AVENUE CONNECTS INTERMENT SPACES
- SCATTERING ALONG LENGTH OF PATHWAY; MARKED BY STONE TABLETS
- NO ALTERATION OF UPPER SLOPE NEAR CHAPEL
- MODERATE AMOUNT OF GRADING REQUIRED; 12 TREES REMOVED
- 25 NEW TREES AND MULTIPLE NEW SHRUBS PROPOSED

## INTERMENT TOTALS:

- 3 DOUBLE-SIDED WALLS, 400 NICHES IN EACH
- TOTAL NUMBER OF INTERMENTS = 1,200
- UNLIMITED SCATTERING



SECTION A-A1 - NORTH ORIENTATION

# Concept 2A

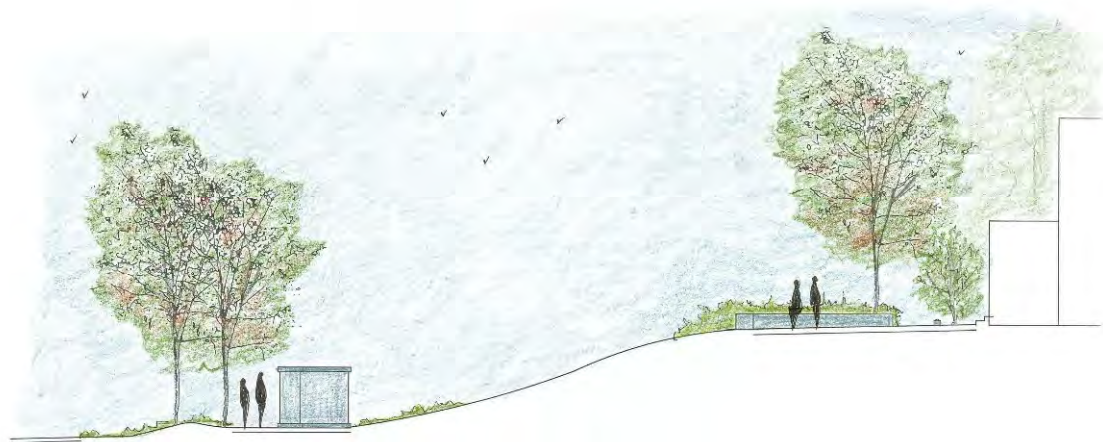


#### DESIGN FEATURES:

- THREE INDIVIDUAL INTERMENT AREAS, EACH WITH 5' HIGH, DOUBLE-SIDED CURVED COLUMBARIUM WALL(S); NORTH AND SOUTH AREAS FEATURE INTIMATE GATHERING SPACES
- SINGLE PATHWAY ACCESSED FROM NORTH AND SOUTH ENDS OF ASPEN AVENUE CONNECTS SPACES
- SCATTERING ALONG LENGTH OF PATHWAY; STONE TABLET MARKERS
- ROAD ALONG WEST SIDE OF CHAPEL NARROWED INTO WALKWAY LINED WITH IN-GROUND CREMATION SITES
- OVERLOOK OPPOSITE ENTRANCE TO CHAPEL PROVIDES VIEW TO FOUNTAIN POND
- MODERATE AMOUNT OF GRADING REQUIRED; 19 TREES REMOVED
- 18 NEW TREES PROPOSED

#### INTERMENT TOTALS:

- 3 DOUBLE-SIDED COLUMBARIUM WALLS, 400 NICHES IN EACH
- 125 IN-GROUND CREMATION SITES ALONG CHAPEL PATHWAY
- TOTAL NUMBER OF INTERMENTS = 1,325
- UNLIMITED SCATTERING



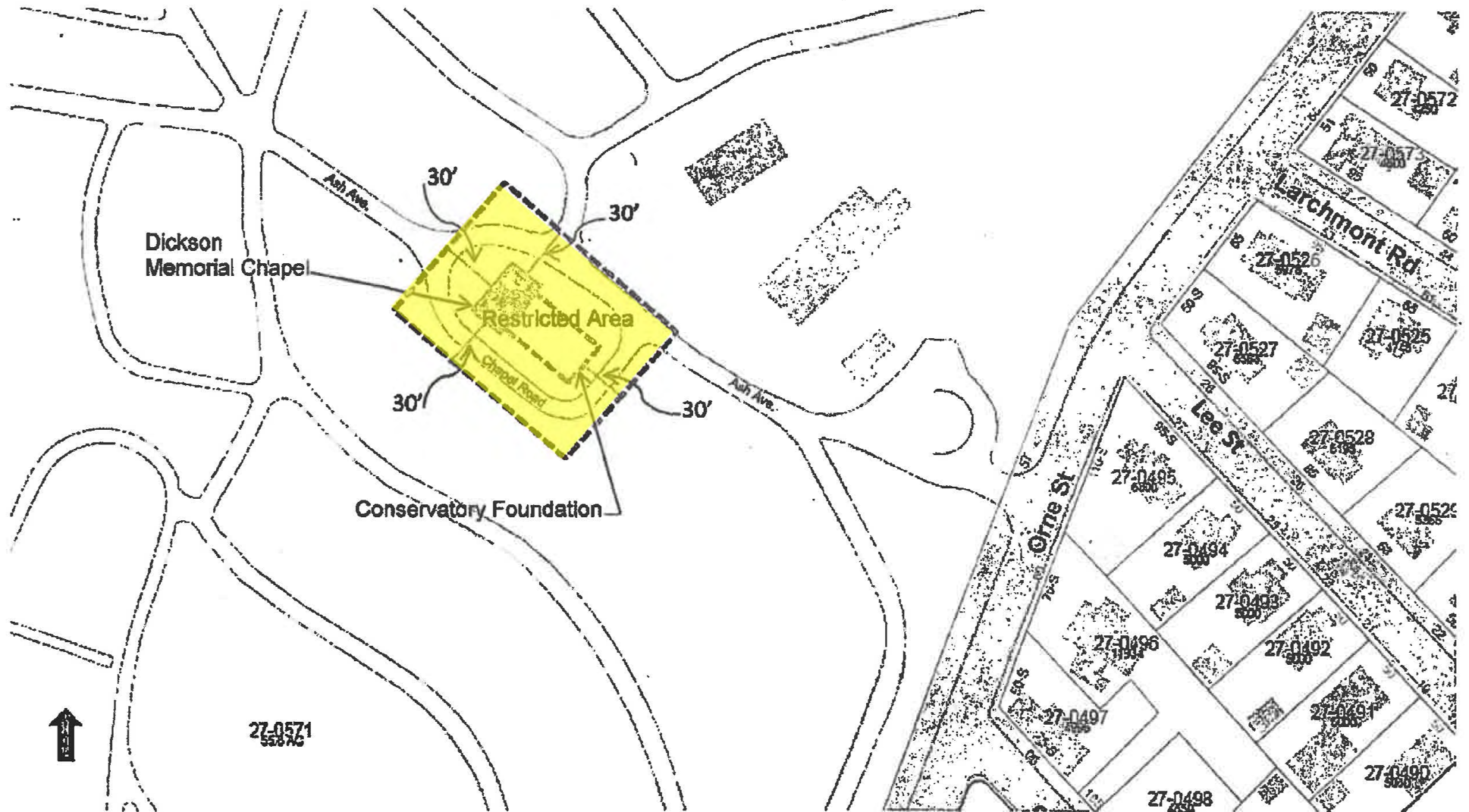
SECTION A-A1 - NORTH ORIENTATION

Concept 2B



# Dickson Chapel Preservation Restriction

## Restricted Area





# *Preservation Restriction Terms*

“...no alterations shall be made to the Restricted Area...unless

- (a) clearly of minor nature and not affecting the characteristics which contributed to the architectural, archaeological, or historical integrity of the Restricted Area, or
- (b) the Commission has previously determined that [the alteration(s)] will not impair such characteristics after reviewing plans and specifications submitted by the Grantor...”

major alterations to the landscape include

“moving or subdividing buildings or Restricted Area; altering of Restricted Area; altering or removing significant landscape features such as gardens, vistas, walks, plantings; ground disturbance affecting archaeological resources.”















A photograph of a grassy hill with several trees. Some trees are bare, while others are evergreens. The sky is blue with some clouds. The text "We welcome your thoughts and ideas!" is overlaid at the bottom.

*We welcome your thoughts and ideas!*



*Thank You.*

