

HIGHWAY GUARD RAIL
NONE

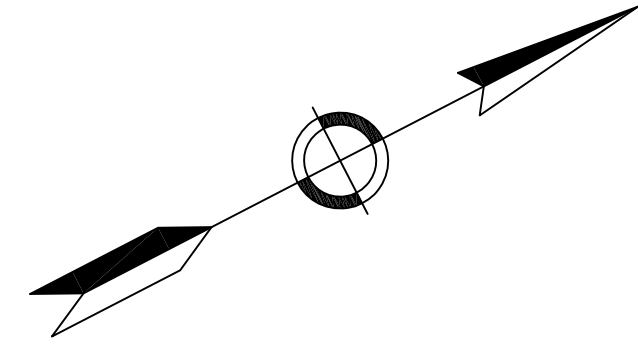
DRAINAGE DETAILS
SEE BELOW

WATER SUPPLY ALTERATIONS
PROP. 12" WATER MAIN FROM
STA. 32+93 TO 44+97

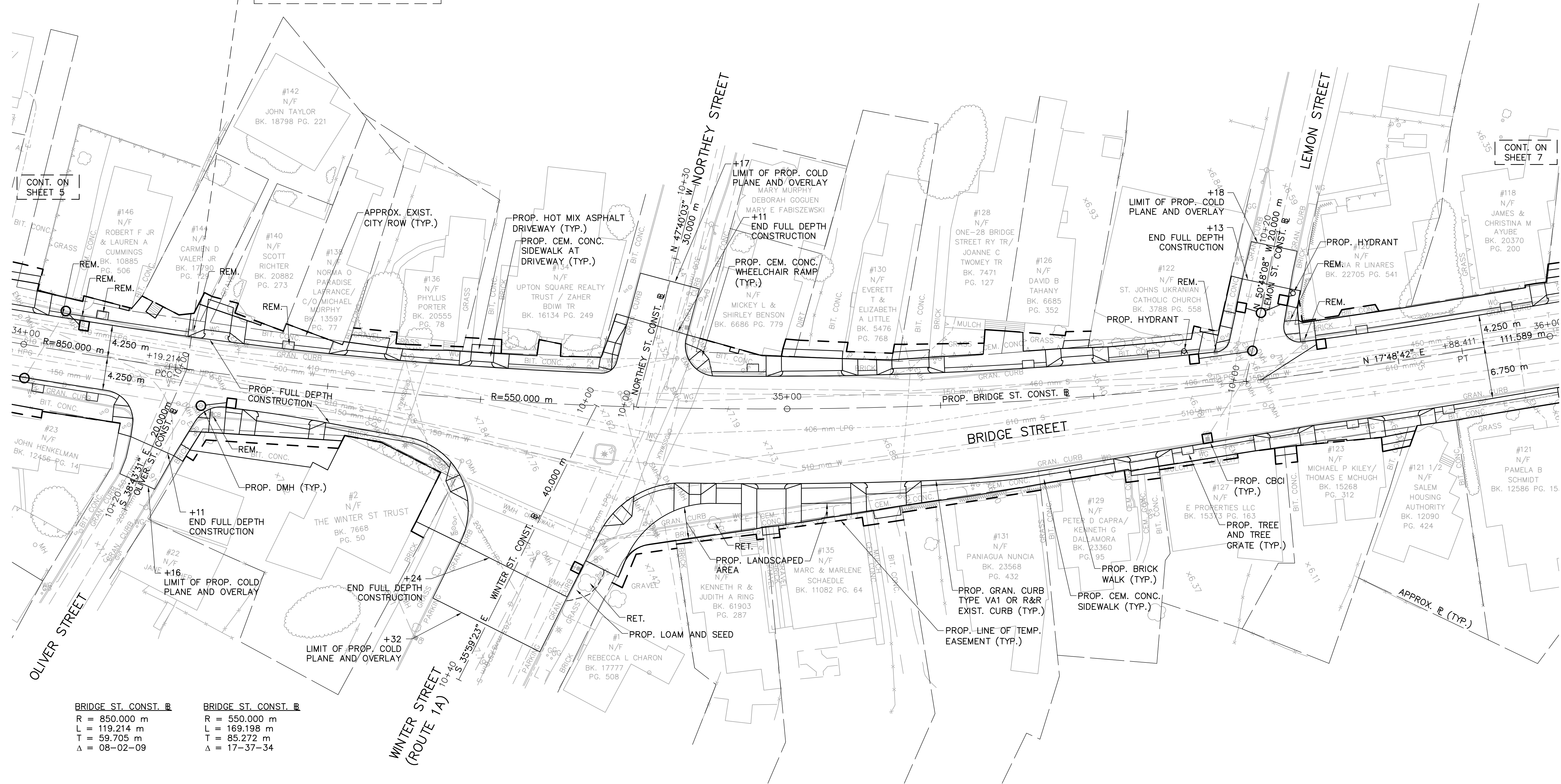
TRAFFIC SIGNAL CONDUIT
SEE TRAFFIC PLAN

LANDSCAPING DETAILS
SEE BELOW

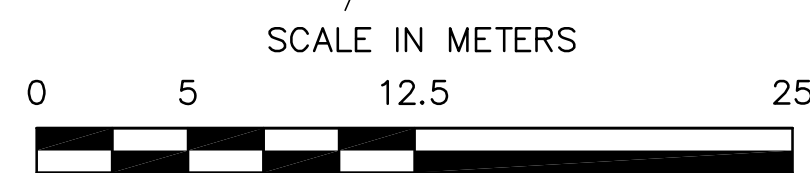
SALEM BRIDGE STREET			
STATE	FED. AID PROJ. NO.	SHEET NO.	TOTAL SHEETS
MASS.		6	81
PROJECT FILE NO. 601017			
CONSTRUCTION PLAN			



STA. 34+21.513 BRIDGE ST. CONST. B
 STA. 10+00.000 OLIVER ST. CONST. B



BRIDGE ST. CONST. B	BRIDGE ST. CONST. B
R = 850.000 m	R = 550.000 m
L = 119.214 m	L = 169.198 m
T = 59.705 m	T = 85.272 m
Δ = 08-02-09	Δ = 17-37-34



FOR PROFILE: SEE SHEET NO. 14

J:\Project\4985\Trans\Plot\4985P-TG02.dwg 12/22/2006 3:47:34 PM EST