

HIGHWAY GUARD RAIL
NONE

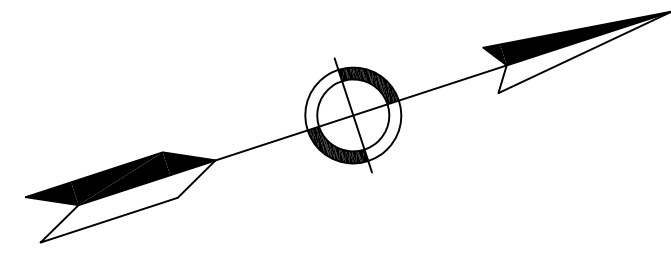
DRAINAGE DETAILS
SEE BELOW

WATER SUPPLY ALTERATIONS
PROP. 12" WATER MAIN FROM
STA. 32+93 TO 44+97

TRAFFIC SIGNAL CONDUIT
SEE TRAFFIC PLAN

LANDSCAPING DETAILS
SEE BELOW

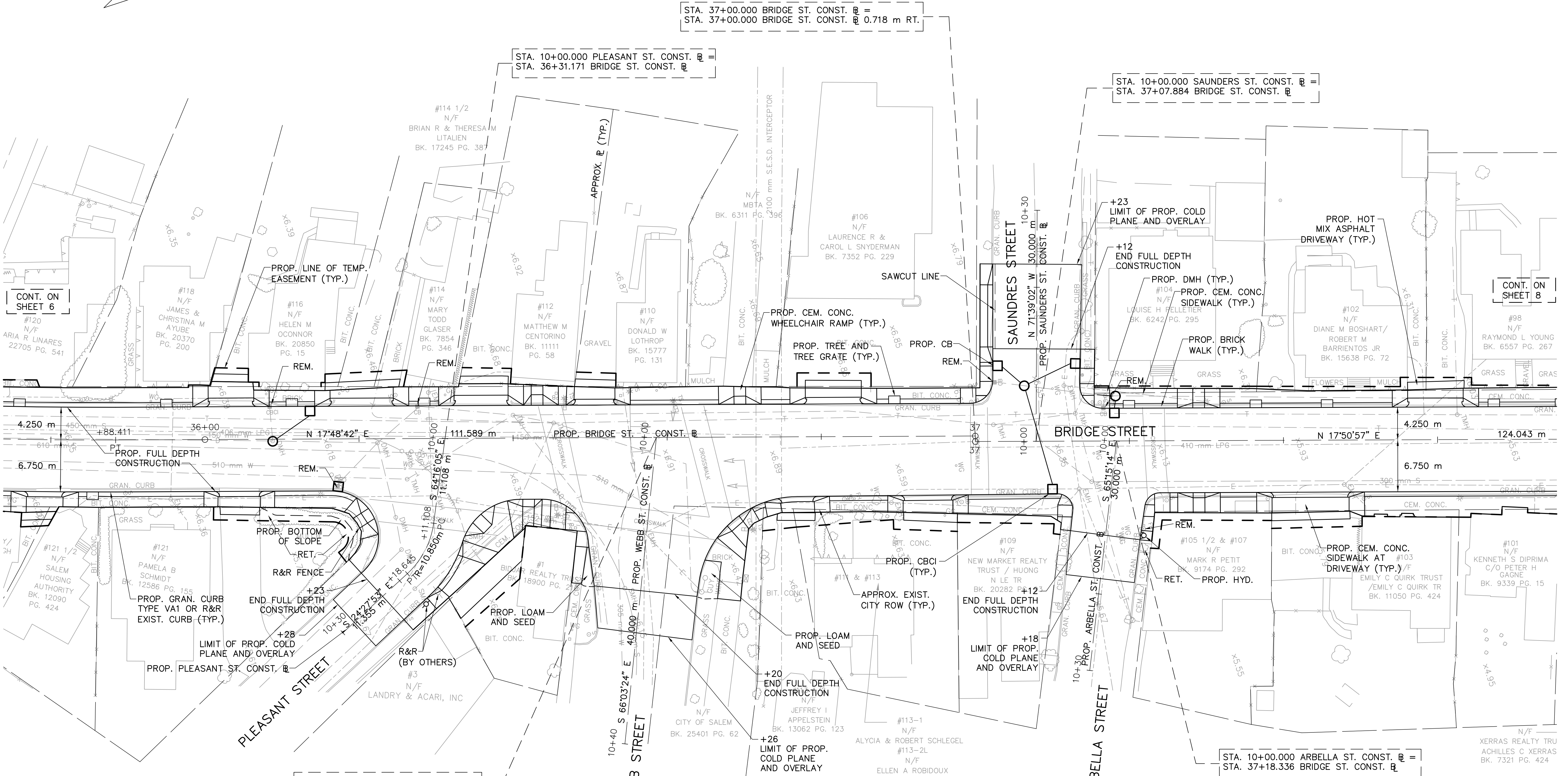
SALEM BRIDGE STREET			
STATE	FED. AID PROJ. NO.	SHEET NO.	TOTAL SHEETS
MASS.		7	81
PROJECT FILE NO. 601017			
CONSTRUCTION PLAN			



STA. 37+00.000 BRIDGE ST. CONST. \mathbb{R} =
 STA. 37+00.000 BRIDGE ST. CONST. \mathbb{R} 0.718 m RT.

STA. 10+00.000 PLEASANT ST. CONST. \mathbb{R} =
 STA. 36+31.171 BRIDGE ST. CONST. \mathbb{R}

STA. 10+00.000 SAUNDERS ST. CONST. \mathbb{R} =
 STA. 37+07.884 BRIDGE ST. CONST. \mathbb{R}



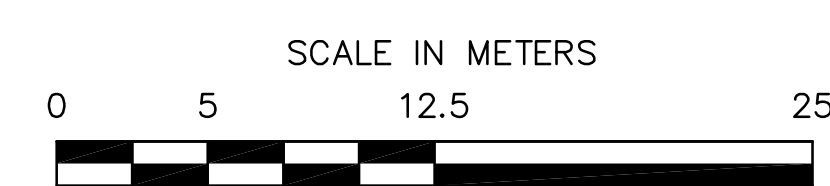
CONT. ON
SHEET 6

CONT. ON
SHEET 8

PLEASANT ST. CONST. \mathbb{R}
 R = 10.850 m
 L = 7.538 m
 T = 3.928 m
 Δ = 39-48-14

STA. 10+00.000 WEBB ST. CONST. \mathbb{R} =
 STA. 36+58.607 BRIDGE ST. CONST. \mathbb{R}

STA. 10+00.000 ARBELLA ST. CONST. \mathbb{R} =
 STA. 37+18.336 BRIDGE ST. CONST. \mathbb{R}



FOR PROFILE: SEE SHEET NO. 15

J:\Project\4985\Trans\Plot\4985P-IGP03.dwg 12/22/2006 3:47:44 PM EST