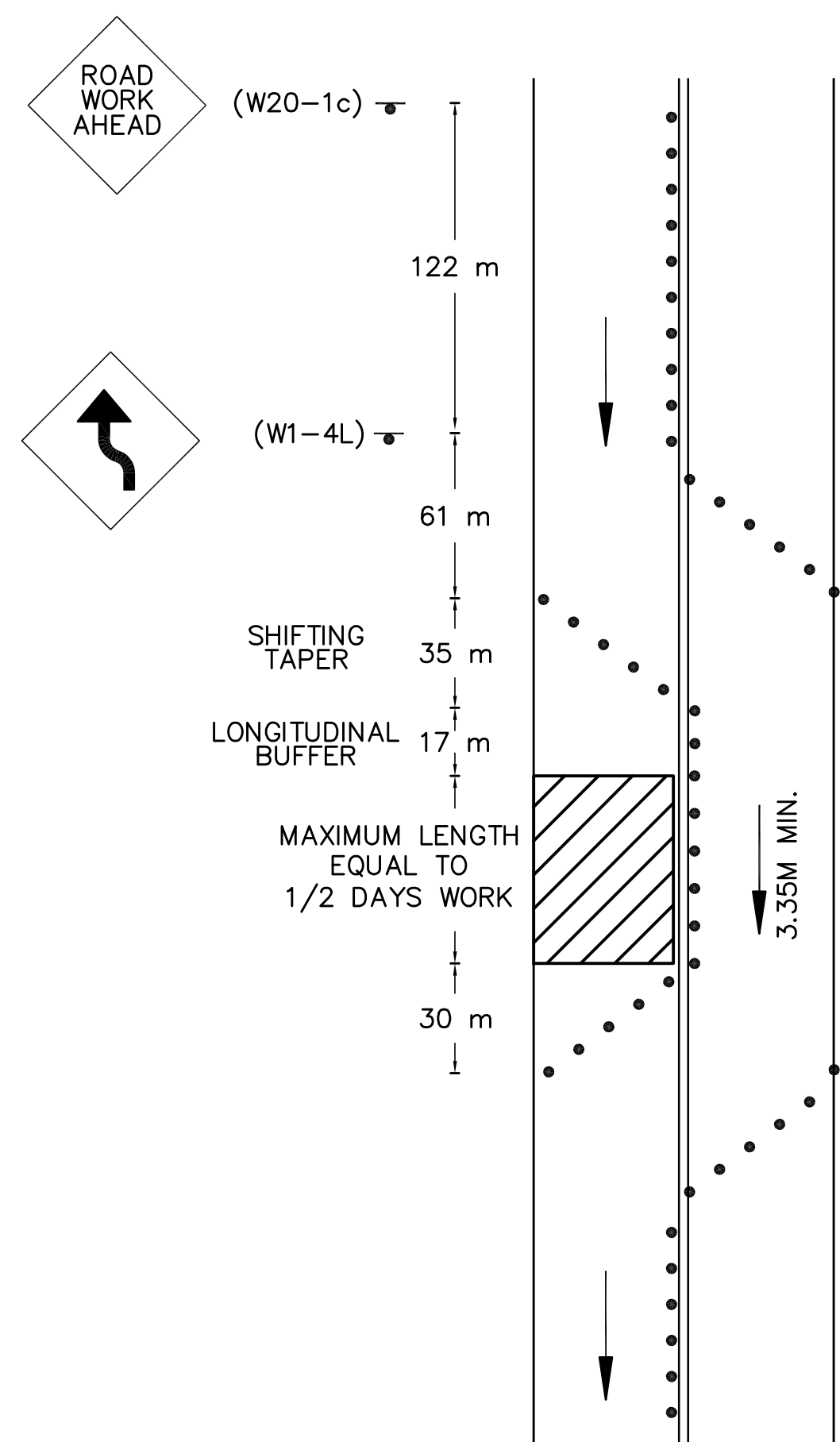
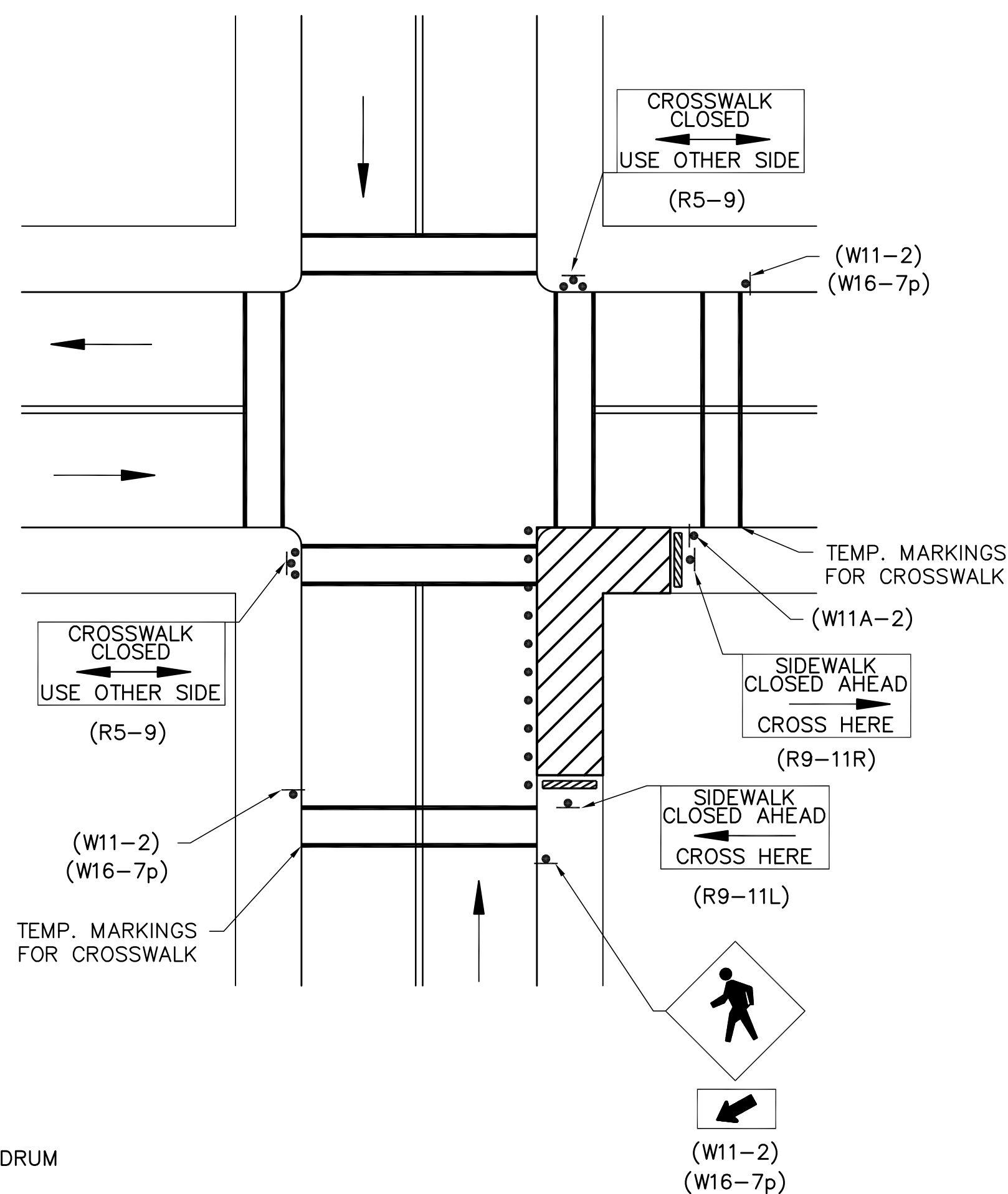


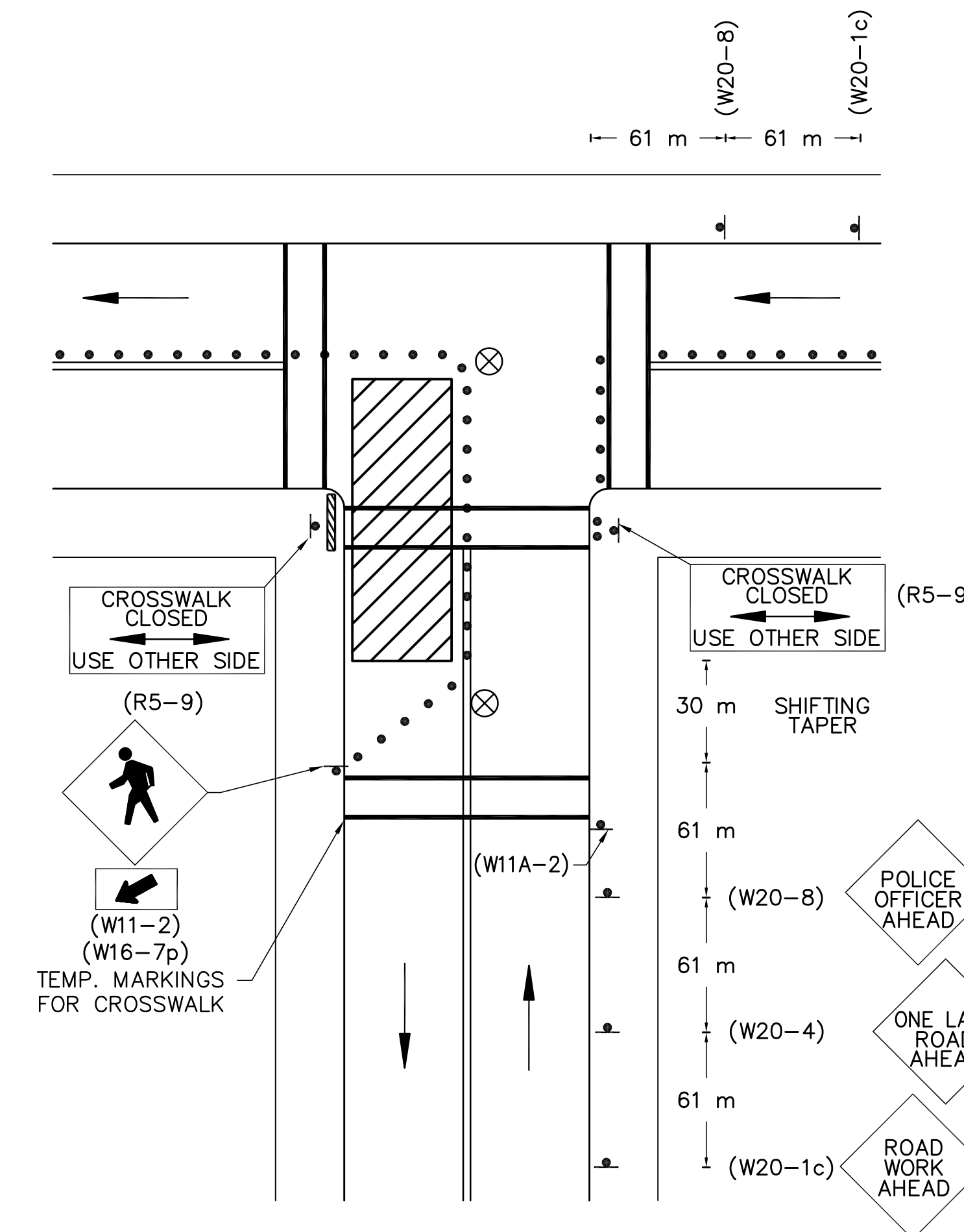
**STAGE ONE
TEMPORARY LANE SHIFT**



**CROSSWALK CLOSURES AND
PEDESTRIAN DETOURS**



**CLOSURE AT
SIDE OF INTERSECTION**



- KEY:**
- REFL. DRUM
 - ▾ SIGNS
 - ▨ WORK AREA
 - ▩ TYPE III BARRICADE
 - ⊗ POLICE OFFICER

NOTES:

1. THE CONTRACTOR SHALL USE TEMPORARY PATCHING OR STEEL PLATE (BEVELED EDGE) TO COVER TRENCHES AT THE END OF THE DAY.
2. ALL DISTANCES MAY BE ADJUSTED TO FIT CONDITIONS, AS DIRECTED BY THE ENGINEER.
3. VEHICLE AND PEDESTRIAN ACCESS/EGRESS MUST BE MAINTAINED AT ALL TIMES TO THE ABUTTERS.
4. THE LOCATIONS OF POLICE OFFICERS ARE SUGGESTED. EXACT LOCATIONS AND NUMBER OF OFFICERS ARE SUBJECT TO ACTUAL FIELD CONDITIONS AND ENGINEER'S DISCRETION. W20-8 SIGN SHOULD BE USED ONLY WHEN POLICE OFFICER IS PRESENT AT WORK ZONE AREA.
5. MAXIMUM SPACING OF CHANNELIZATION DEVICES IS EQUAL, IN FEET, TO SPEED LIMIT (M.P.H.) (3m SPACING TYPICAL ON TAPER, 7.6m SPACING TYPICAL ON TANGENTS).
6. ADVANCE SIGNING SHALL BE MAINTAINED DURING ALL CONSTRUCTION PHASES.
7. SPEED ADVISORY PLATES SHALL BE ADDED TO ADVANCE SIGNING IF REQUIRED AND DIRECTED BY MASSHIGHWAY.
8. TEMPORARY SIGNING NOT APPLICABLE TO THE CONSTRUCTION PHASE SHALL BE EITHER COVERED OR REMOVED AS DIRECTED BY THE ENGINEER. THE W20-4 AND W20-8 SIGNS SHALL BE REMOVED OR COVERED AT THE END OF EACH WORK DAY.
9. ALL SIGNS AND SIGN SUPPORTS LOCATED ON OR NEAR THE TRAVELED WAY MUST PASS THE CRITERIA SET FORTH IN NCHRP 350 "RECOMMENDED PROCEDURES FOR THE SAFETY PERFORMANCE EVALUATION OF HIGHWAY FEATURES."