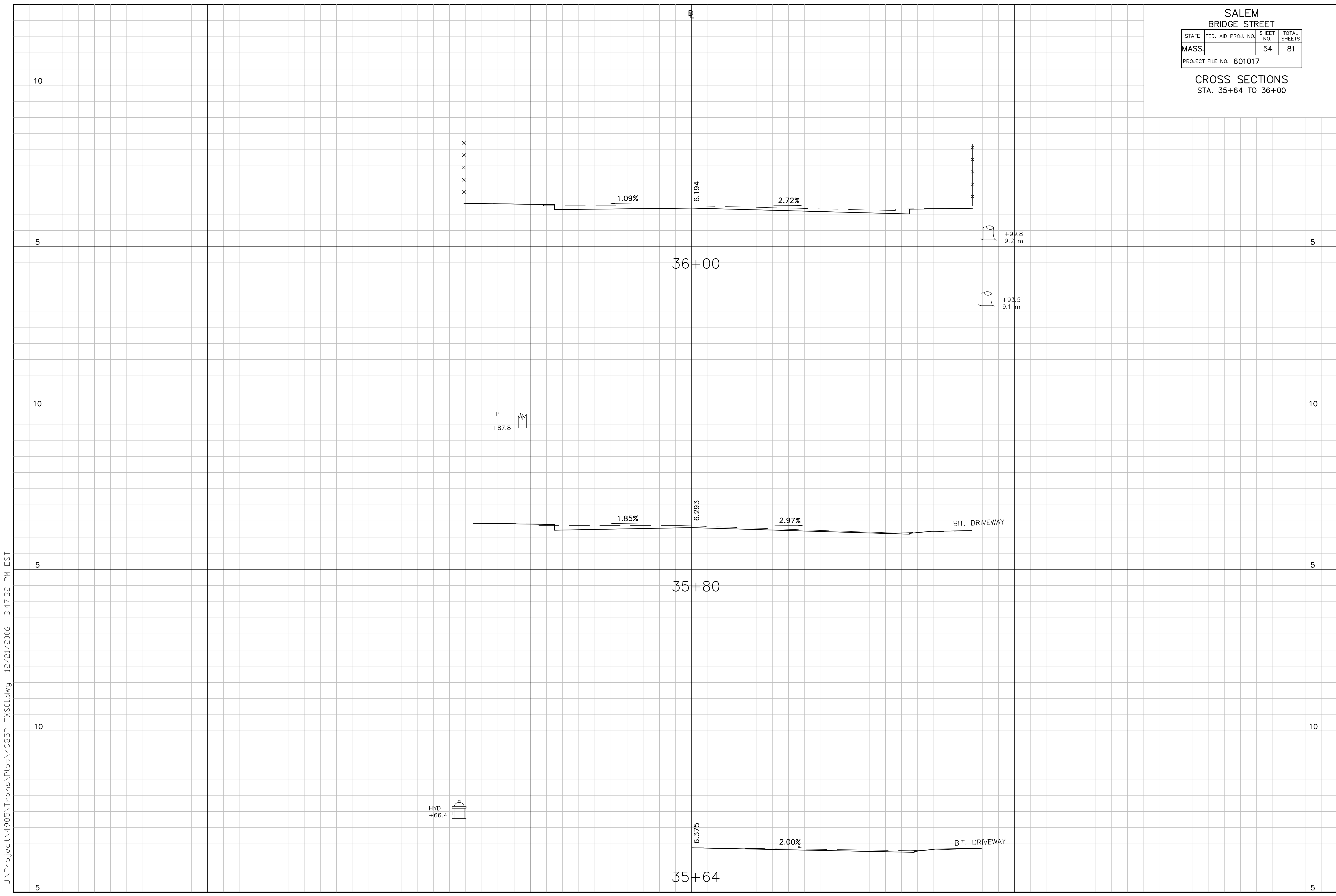


SALEM BRIDGE STREET			
STATE	FED. AID PROJ. NO.	SHEET NO.	TOTAL SHEETS
MASS.		54	81
PROJECT FILE NO. 601017			

CROSS SECTIONS
STA. 35+64 TO 36+00



J:\Project\4985\Trans\Plot\4985P-TX501.dwg 12/21/2006 3:47:32 PM EST