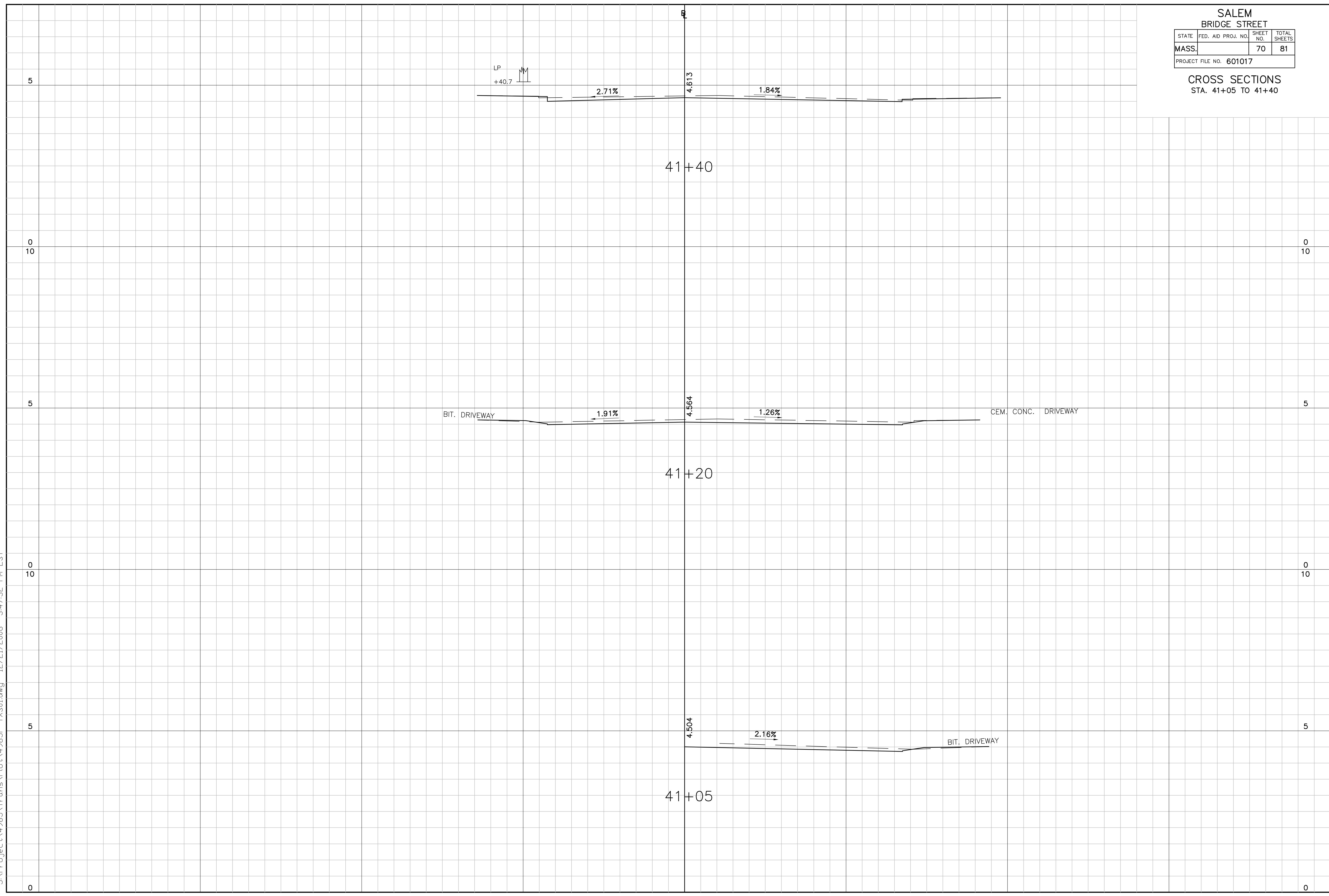


SALEM BRIDGE STREET				
STATE	FED. AID PROJ. NO.	SHEET NO.	TOTAL SHEETS	
MASS.		70	81	
PROJECT FILE NO. 601017				

**CROSS SECTIONS**  
STA. 41+05 TO 41+40



J:\Project\4985\Trans\Plot\4985P-TX501.dwg 12/21/2006 3:47:32 PM EST