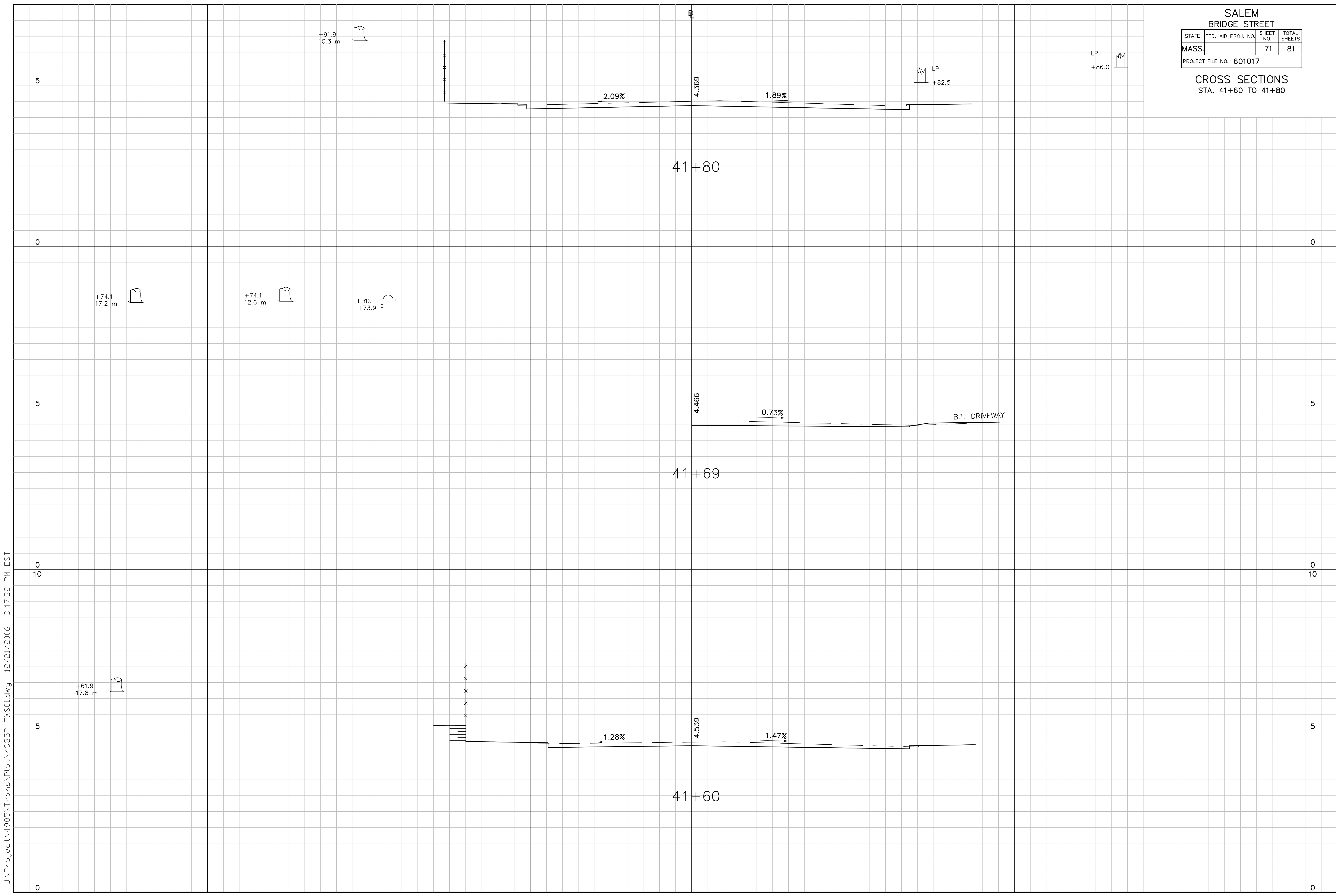


SALEM  
BRIDGE STREET

STATE	FED. AID PROJ. NO.	SHEET NO.	TOTAL SHEETS
MASS.		71	81

PROJECT FILE NO. 601017  
CROSS SECTIONS  
STA. 41+60 TO 41+80



J:\Project\4985\Trans\Plot\4985P-TX501.dwg 12/21/2006 3:47:32 PM EST