



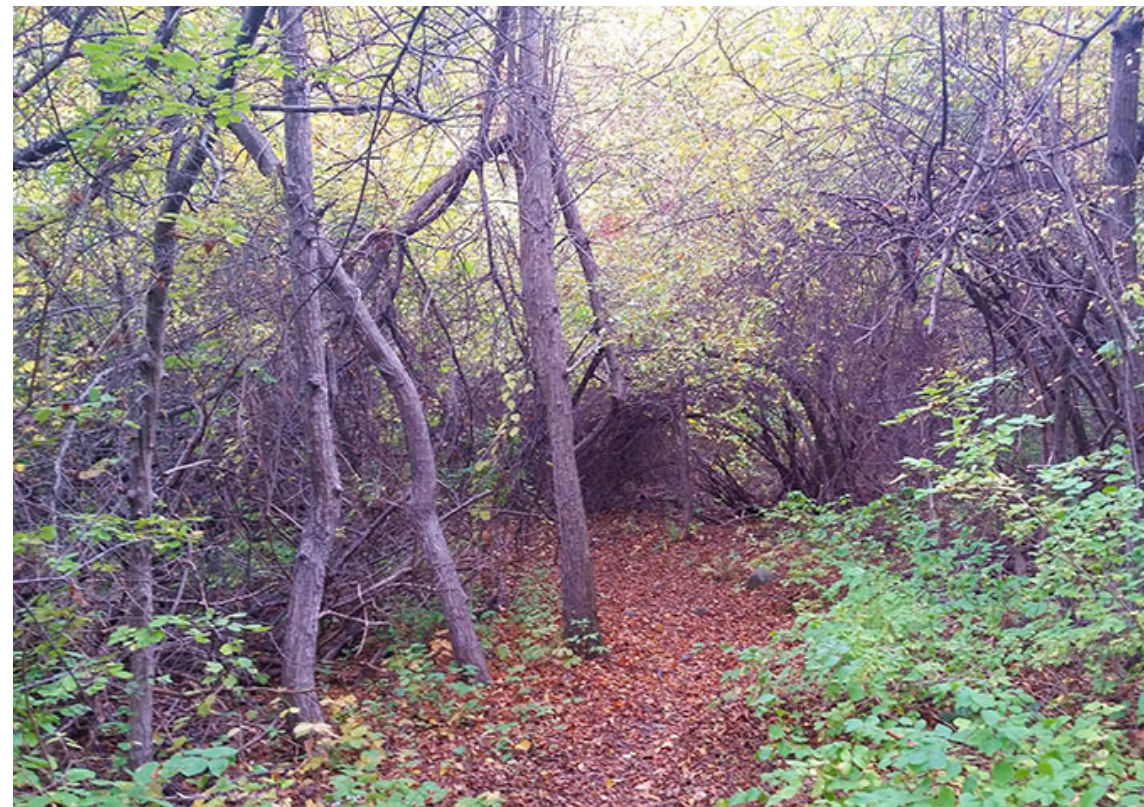
FOREST RIVER CONSERVATION AREA **TRAIL ASSESSMENT**

SALEM CONSERVATION COMMISSION MEETING NOV 12, 2015



kzla +







DOMINANT VEGETATION

Salt Marsh

Dominated by phragmites

Eagle Hill

Lichens, red cedar, black cherry, buckthorn, sumac, red and white oak, smilax, princess pine

Overhanging Groves

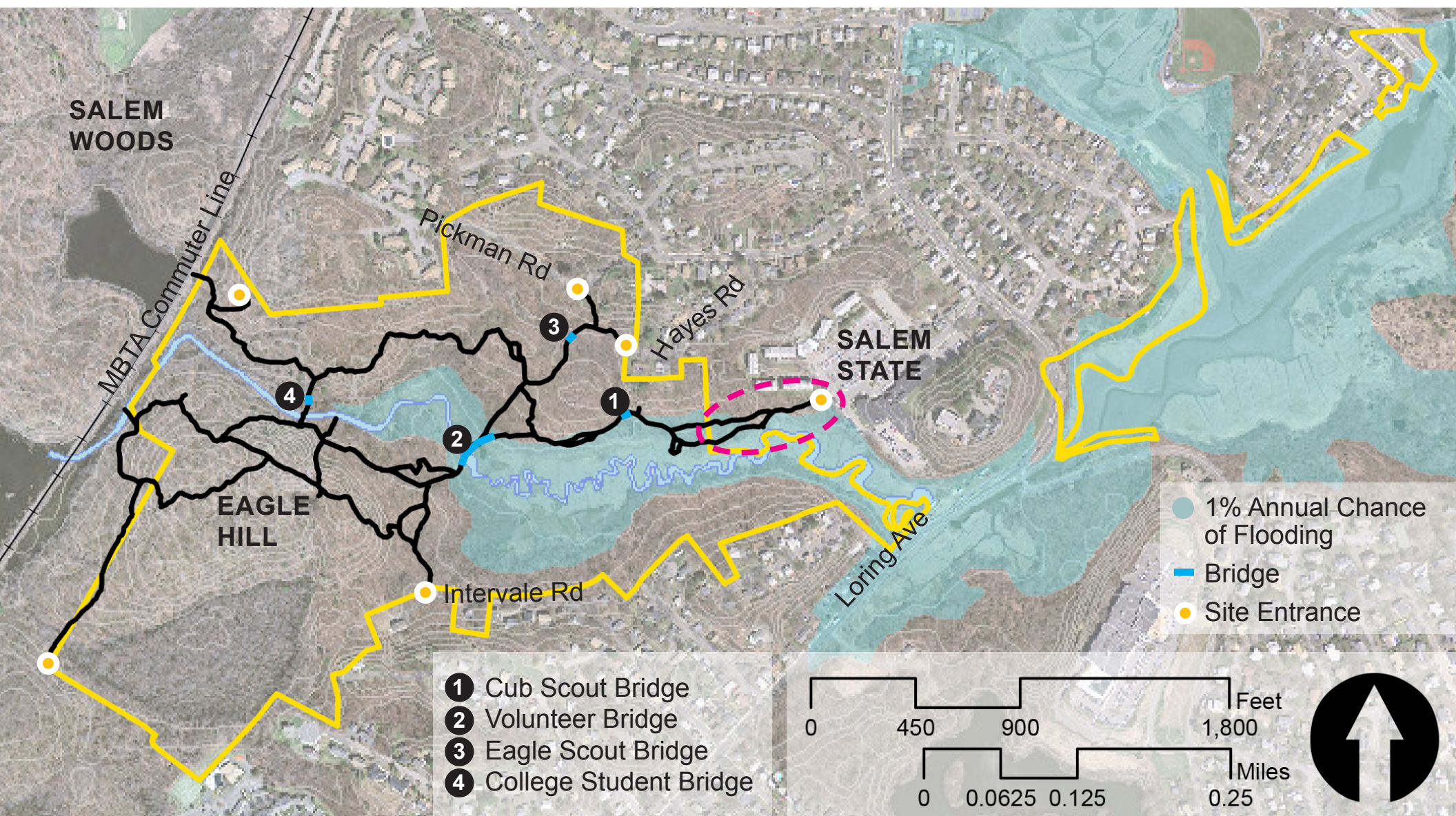
Amelanchier, sumac, bittersweet

General Woodland

Much pignut hickory, some shagbark, birch, red oak, red maple

POTENTIAL ISSUES

Spread of smilax (catbrier), buckthorn, bittersweet, burning bush, phragmites



- Part of trail outside of Conservation Commission land
- Salt marsh trails in floodplain
- Five identified entrances to site not counting crossings over railroad tracks



SALEM STATE ENTRANCE

- No ADA parking
- Signage needs repair
- Entry trail somewhat messy and overgrown





At foot of Eagle Hill



Hayes Rd



Pickman Rd

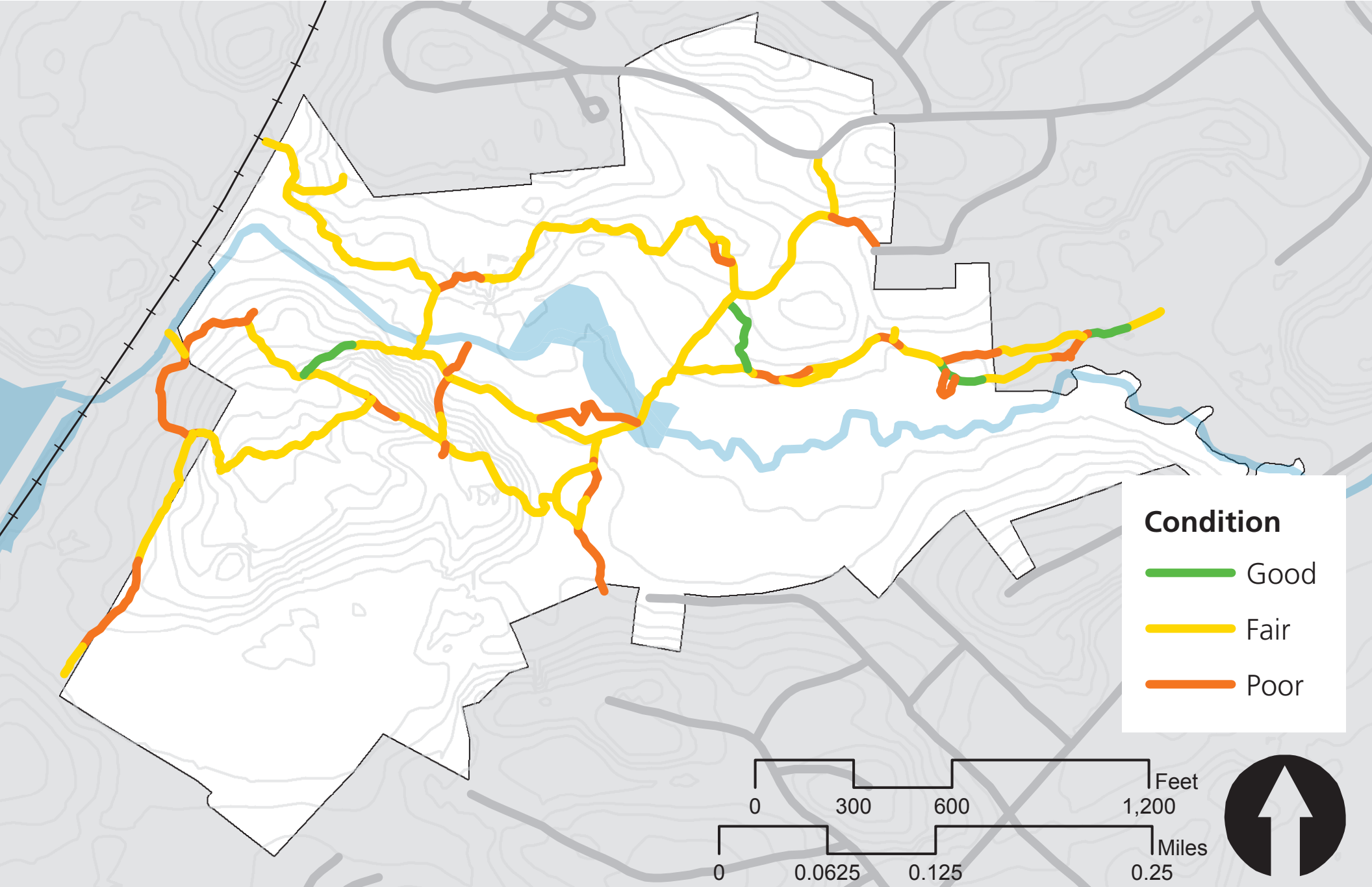


Southern rail crossing



OTHER ENTRANCES

Northern rail crossing



- 2.5 miles of trail, possibility for accessible route
- Seventy percent (**70%**) of trails are in **fair** condition.



Good Condition

- Minimal to No Obstructions
- Minimal to No Overgrowth
- Minimal to No Erosion

Fair Condition

- Noticeable surface obstructions such as exposed tree roots and small rocks
- Some overgrowth
- Some erosion

Poor Condition

- Large-sized or large quantity of obstructions on walking surface or overhead
- Much erosion



Utility poles lining path running to Pickman Road



Concrete wheel stops near the salt marsh



One of several signs advertising fines & vandalized



Fire pit at top of Eagle Hill

EXISTING SITE FEATURES



ODDITIES



CUB SCOUT BRIDGE

- 16' long x 4' wide
- 3 longitudinal 4" x 4" stringers
- dry rot in deck planks
- deck flex
- no handrails

DOES NOT MEET CODE



VOLUNTEER BRIDGE

- 210' long x 5'-10" wide
- deck 4-5' above marsh surface
- planks run longitudinally
- post and transverse cap supports, timber and grout-filled PVC
- deck deterioration
- no guard rails

DOES NOT MEET CODE



EAGLE SCOUT BRIDGE

- 22' long x 5' wide
- 4"x4" and 4"x6" transverse members supported by logs
- sturdier construction than previous two bridges
- post and transverse cap supports, timber and grout-filled PVC
- some deck rot & limited bounciness
- no guard rails

DOES NOT MEET CODE



COLLEGE STUDENT BRIDGE

- 20' long x 5' wide
- railroad rails/wide flange beams span between stone and mortar abutments
- good condition overall
- no guard rails

DOES NOT MEET CODE

SIGNAGE

- 14 signs or sign remnants currently
- 10 wayfinding markers (signs or blazes) proposed

