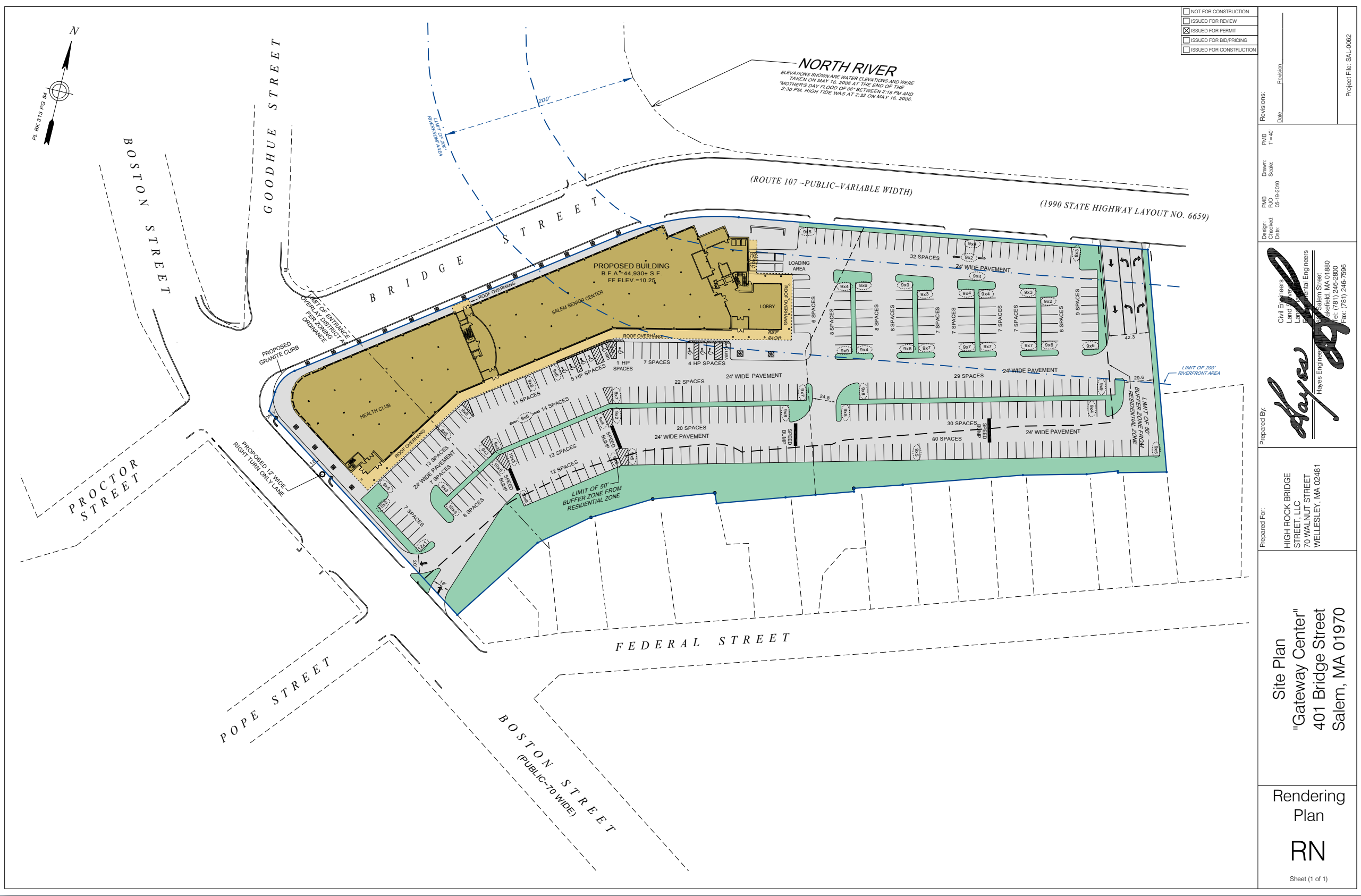


Mayor Jean A. Levesque
Community Life Center
and
Multi-Family/Retail Development
Boston and Bridge Streets

Salem City Council
16 July 2015



AERIAL VIEW



PREVIOUSLY APPROVED PROJECT



	OFFICE BUILDING	CLC	MULTI- FAMILY
BUILDING AREA	138,100	20,000	162,900
STORIES	4	2	5
HEIGHT	58	30	58
UNITS			117
PARKING	374		298
LOT AREA	5.1 ACRES		5.1 ACRES

Landscape Plan



Gateway Center

Salem, Massachusetts

Illustrative Landscape Plan

July 2, 2015

DEVELOPER : High Rock Bridge Street LLC

ARCHITECT : The Architectural Team

Blair Hines Design

Associates

LANDSCAPE ARCHITECTS

tat

the architectural team

LANDSCAPE PLAN

Mayor Jean A. Levesque Community Life Center

COMMUNITY LIFE CENTER COMMITTEE

- UPDATED PROGRAM FOR CURRENT NEEDS

NEXT GENERATION OF SENIORS

SOCIAL SPACES: CAFE, LOUNGE, GREAT ROOM (± 160 SEATED)

DEPARTMENT SPACES: OFFICES, CONFERENCE, BOARD ROOM

PROGRAM SPACE ON SECOND FLOOR

- 2 STORY BUILDING

ALLOWS FOR OUTDOOR SPACE

ADDITIONAL PARKING

SINGLE STORY GREAT ROOM HIGHER CEILINGS

- STATUS

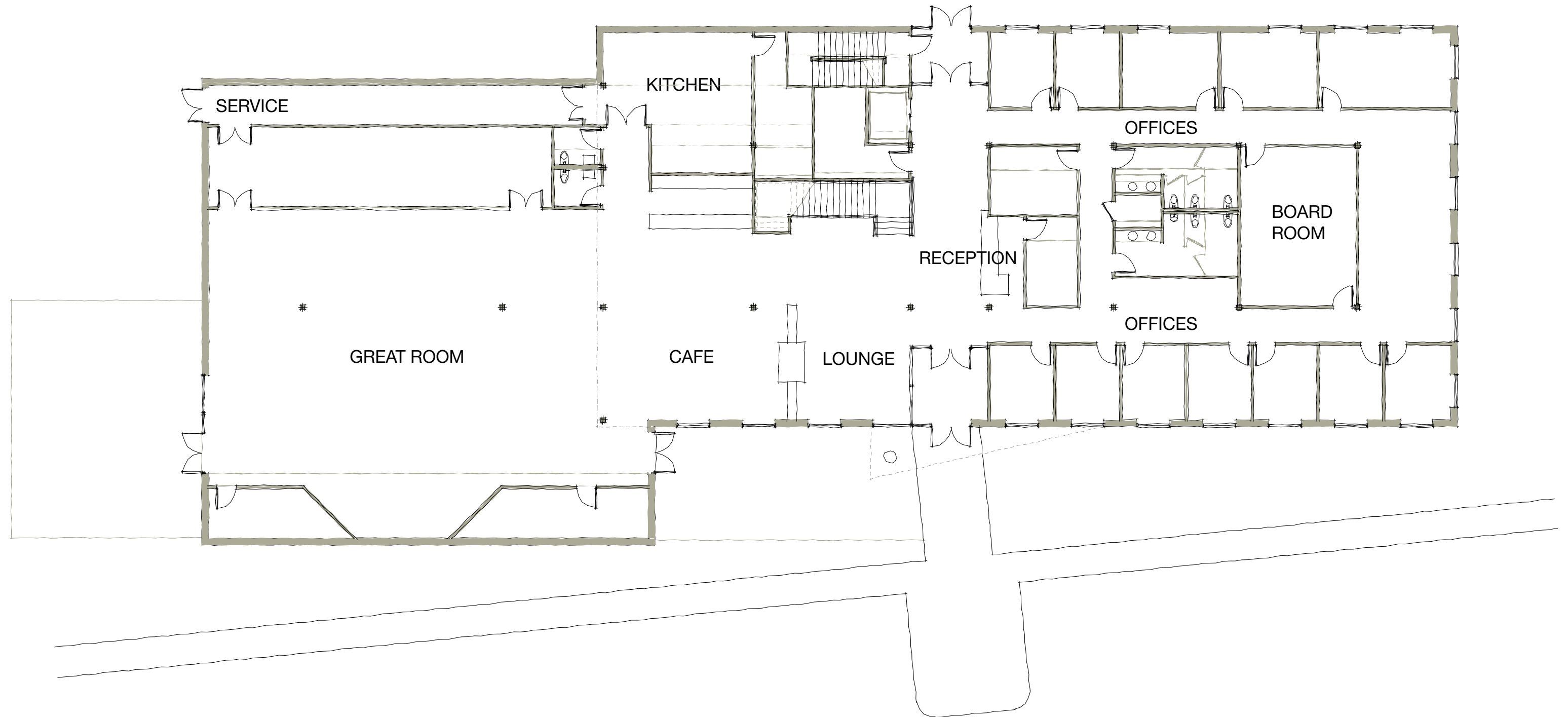
DEVELOPED CONCEPTUAL FLOOR PLANS

WORKING WITH THE INTERIOR DESIGNER

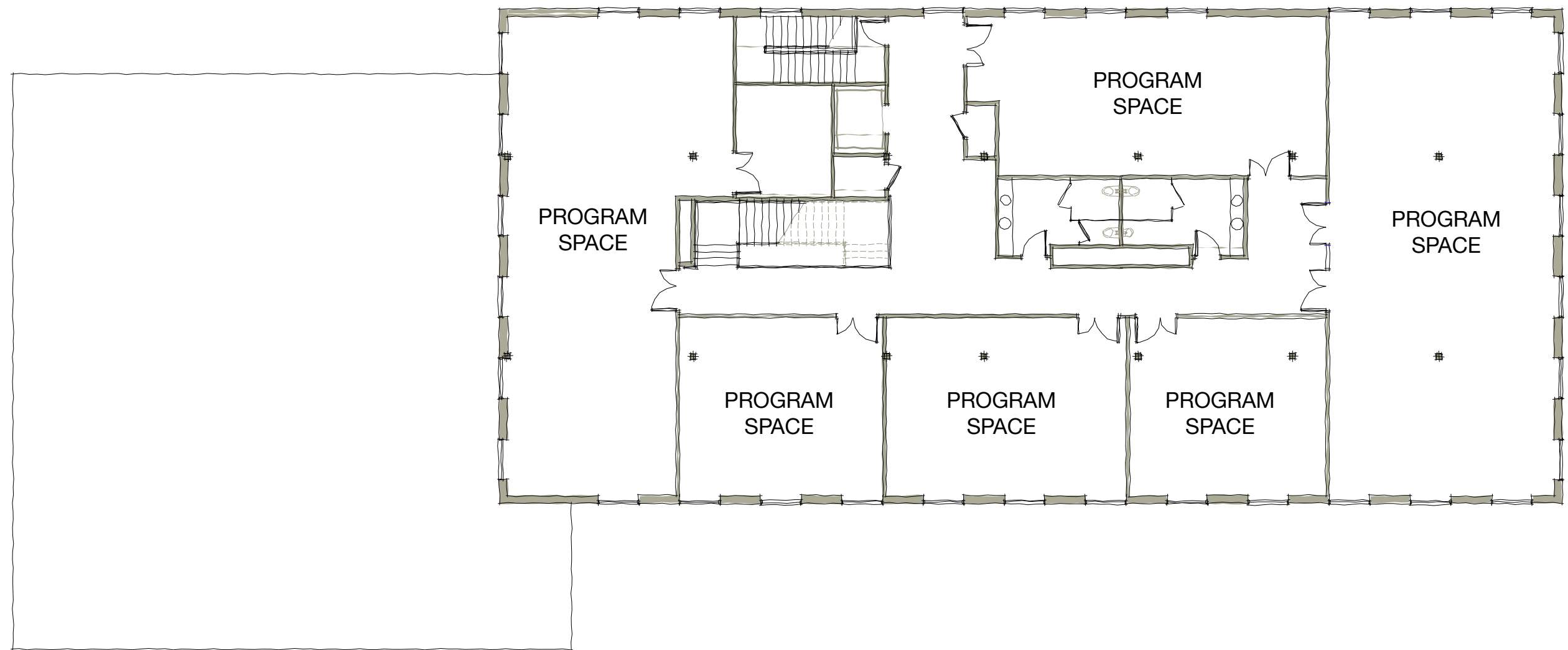
READY TO PROCEED AFTER APPROVALS



SITE PLAN



FIRST FLOOR PLAN



SECOND FLOOR PLAN



COMMUNITY LIFE CENTER SOUTH ELEVATION



COMMUNITY LIFE BUILDING PERSPECTIVE FROM PARKING

Multi-Family/Retail Building



SITE PLAN



GATEWAY CENTER



GATEWAY CENTER

