



# **Lafayette Street Improvements Project**

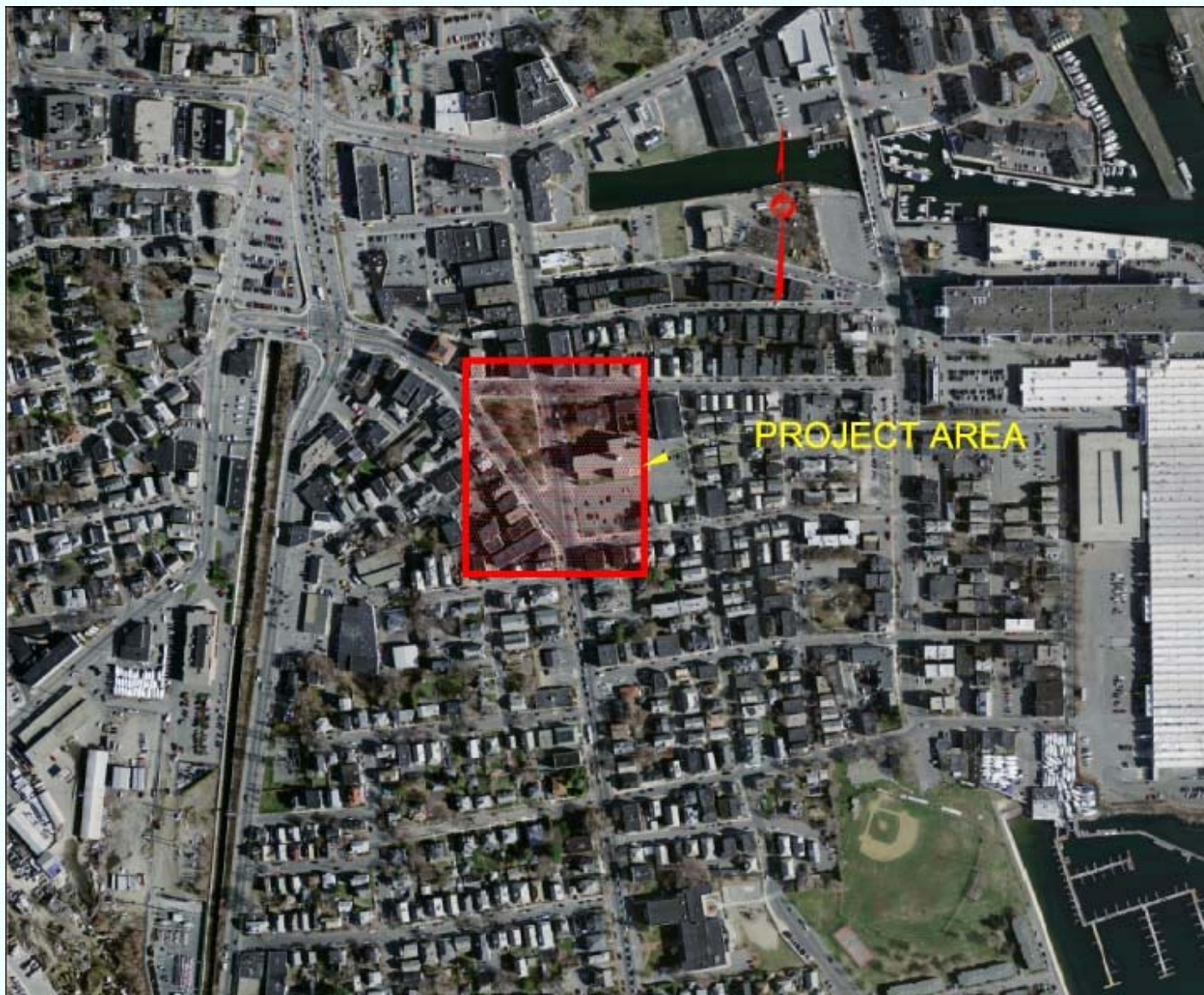
## **Harbor Street to Washington and Dow Streets**

### **Public Meeting**

**Salem, Massachusetts**  
**February 7, 2011**



# Project Area





# Project Funding

- **State Funding**

- Public Works Economic Development Grant, (PWED) - \$1,000,000
- Construction must be completed by June 2012

- **Local Funding**

- Community Development Block Grant (CDBG) - \$100,000

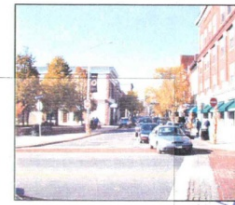




# Project Needs

- **Background**
  - Intersections identified in Central Transportation Planning Staff (CTPS) 2005 Improvement Study

Transportation Improvement Study for Routes 1A, 114, and 107, and Other Major Roadways in Downtown Salem



A report produced by the Central Transportation Planning Staff for the Boston Region Metropolitan Planning Organization







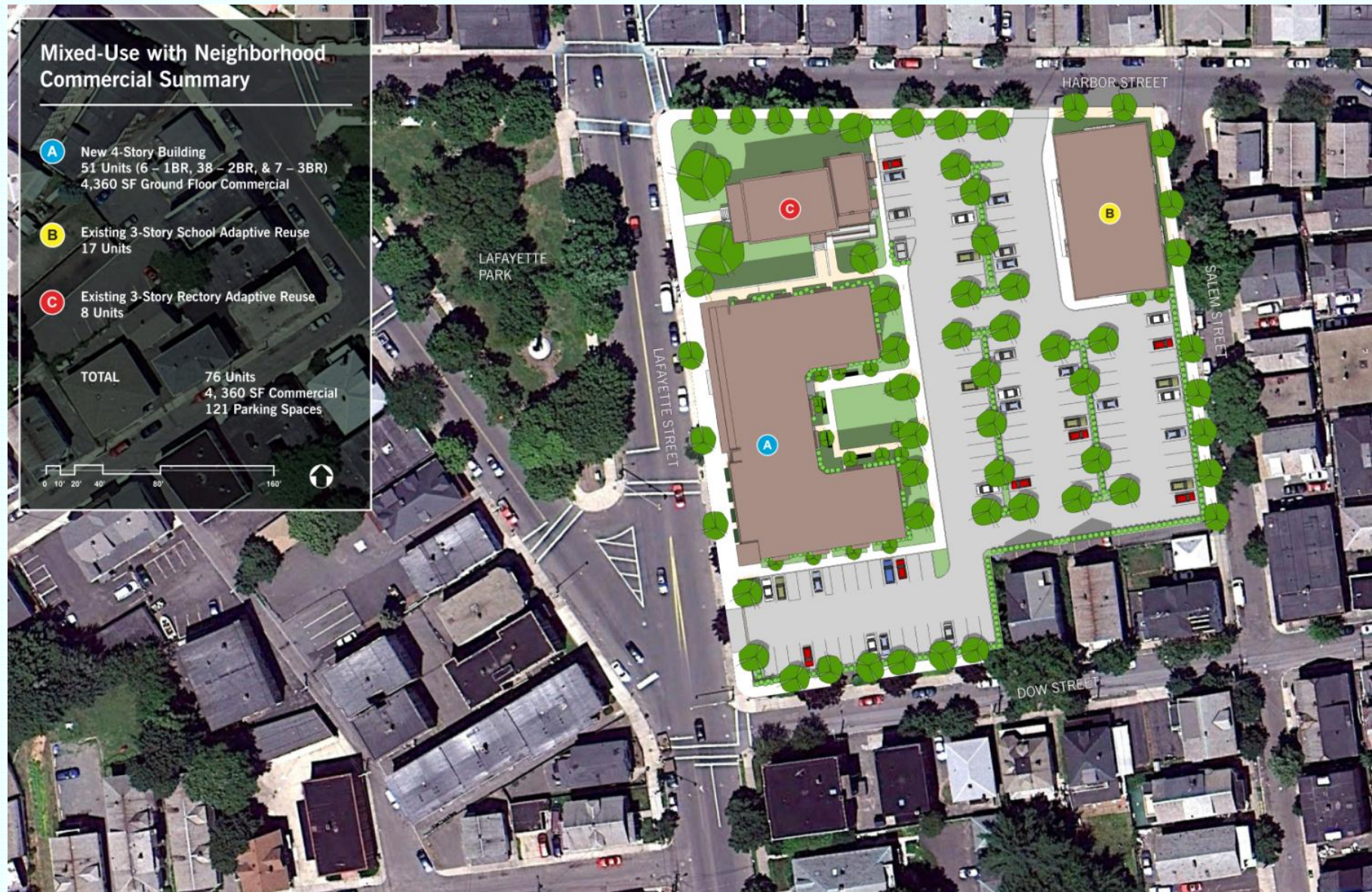
# Proposed St. Joseph's Church Redevelopment







# Proposed St Joseph's Church Redevelopment (Site Plan)





# Project Goals

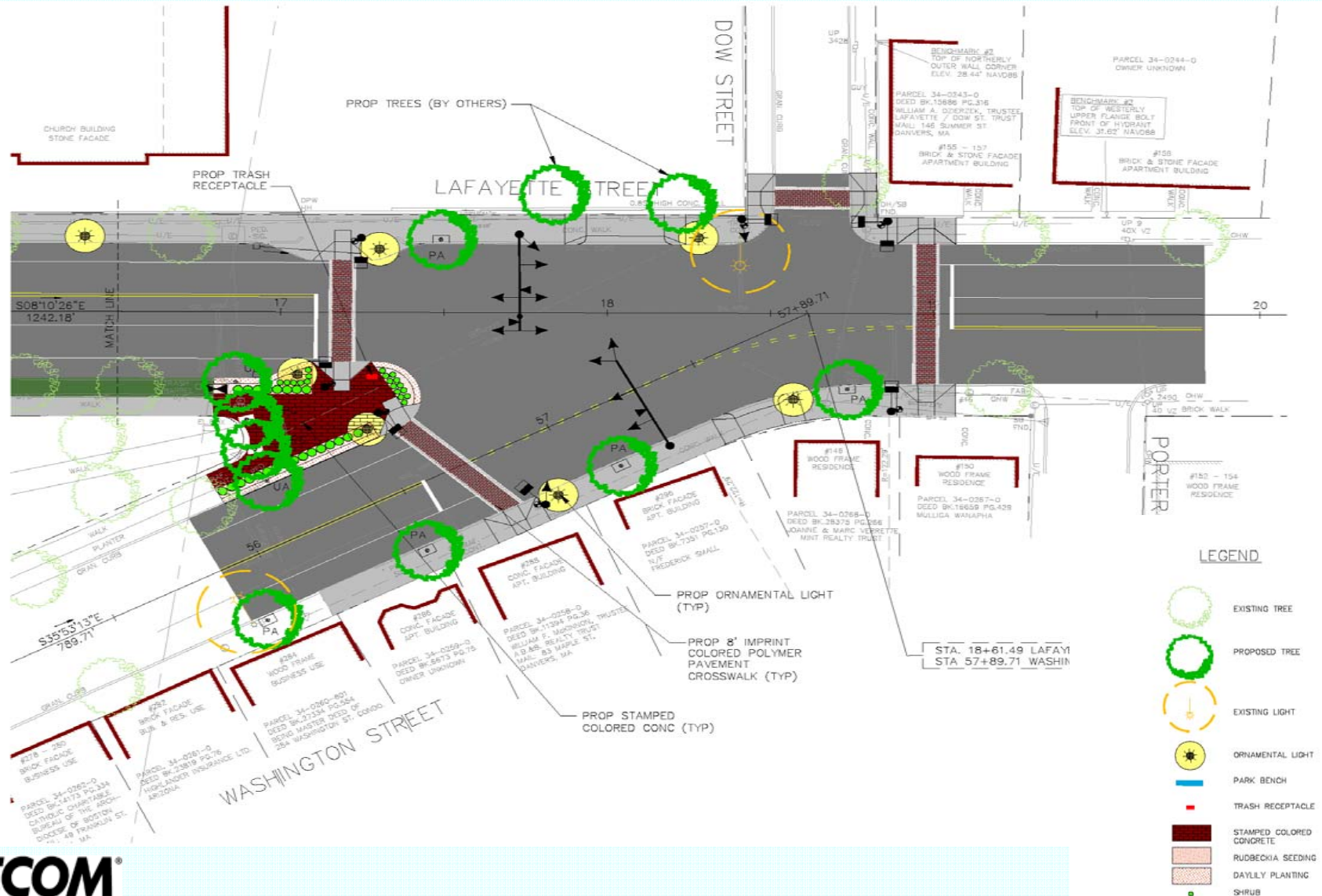
- **Improve safety and driver expectation**
- **Reduce traffic delay, improve LOS**
- **Improve pedestrian mobility**
- **Increase vehicle access**
- **Minimize impacts to on street parking**
- **Improve aesthetic character of project area**







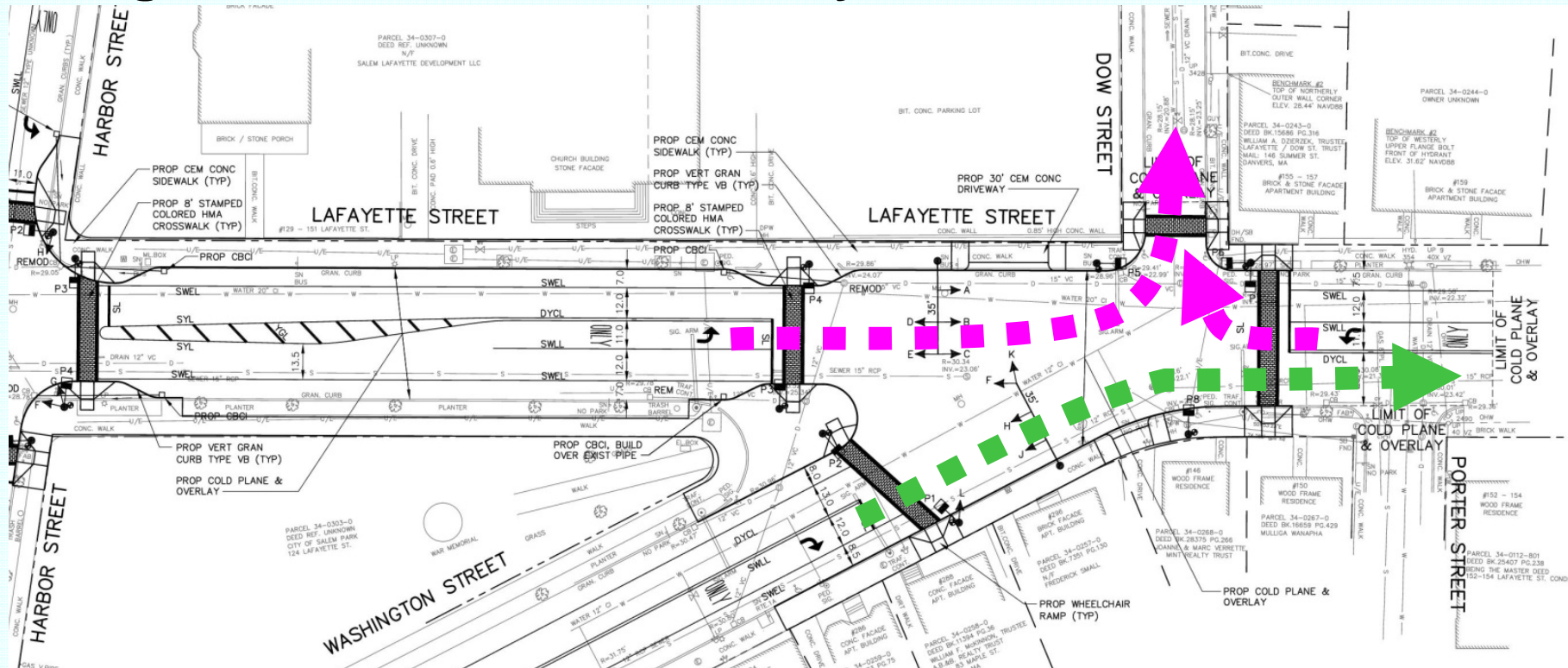
# Proposed Washington Street Intersection Improvements





# Proposed Project Improvements

- **Single Lane Washington Street Approach**
- **Right and Left turn from Lafayette Street to Dow Street**







# Proposed Safety & Access Improvements

- **Traffic signals to regulate vehicle movements and provide dedicated pedestrian crossing phase and countdown signals**
- **Curb extensions (Bump outs) to shorten crosswalks and provide better line of sight for pedestrians**





# Proposed Safety & Access Improvements (cont)

- **Relocated new driveway for Saint Joseph's to control and provide safe access and for the redevelopment site**
- **Intersection on-street parking changes to improve site distance for vehicles and pedestrians**
- **Non-compliant and compliant parking space impacts**
- **New Parking Spaces Gained from extension of Lafayette Park into Lafayette/Washington Street Intersection**
- **Consolidate bus stop on the east side of Lafayette Street**



# Streetscape Improvements

- **Streetscape Improvements**
  - Imprinted Crosswalks
  - Solar Powered Trash Receptacles
  - City Standard Benches







# Streetscape Improvements

- **Streetscape Improvements (cont.)**
  - Ornamental traffic signals and street lights



**AECOM**®

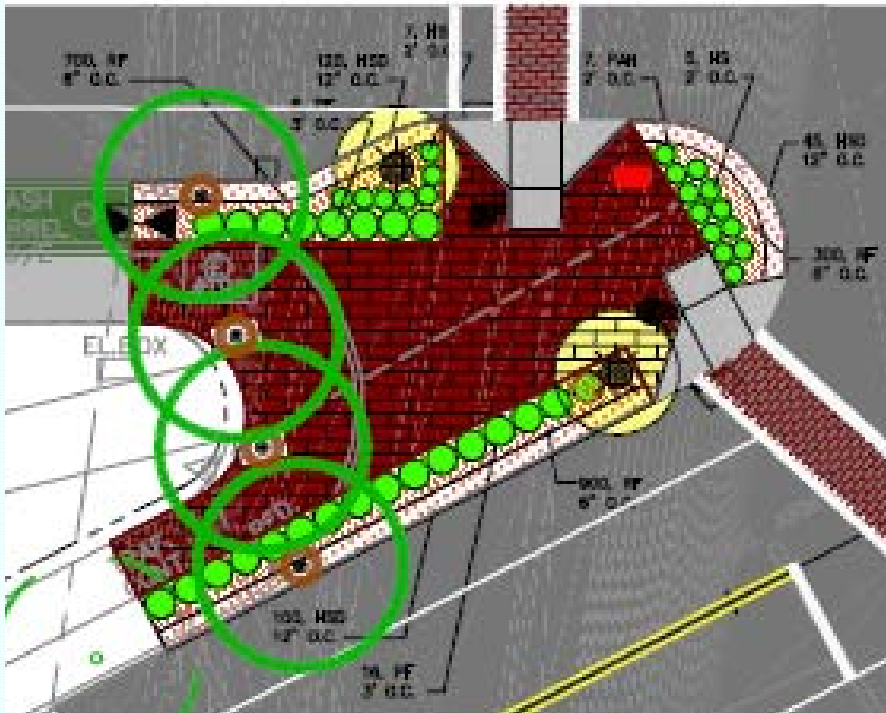






# Streetscape Improvements

- **Streetscape Improvements (cont.)**
  - Narrowing the Lafayette/Washington Street Intersection increases the effective area of the park (stamped concrete, landscaping, lighting)
  - Installation of new street trees and landscaping





# Proposed Landscaping

SALEM				
LAFAYETTE STREET				
STATE	FED. AID PROJ. NO.	SHEET NO.	TOTAL SHEETS	
MA	N/A	18	20	

LANDSCAPING & LIGHTING PLANS



ULMUS AMERICANA 'VALLEY FORGE'



PLATANUS ACERIFOLIA 'YARWOOD'



PYRUS CALLERYANA 'ARISTOCRAT'



POTENTILLA FRUTICOSA 'KATHERINE DYKES'



HEMEROCALLIS 'STELLA D' ORO'



PENNISETUM ALOPECUROIDES 'HADELIN'



HELICTOTRICHON SEMPERVIRENS



RUDBECKIA FULGIDA 'GOLDSTURM'





## Next Steps

- **Prepare final construction plans, bid specifications, and cost estimate**
- **Issue the project for bidding scheduled for May 2011**
- **Construction scheduled to begin Summer 2011**
- **Completion date by June 2012**



# Project Contact

**Frank Taormina**

Dept of Planning & Community Development

978-619-5685

[ftaormina@salem.com](mailto:ftaormina@salem.com)