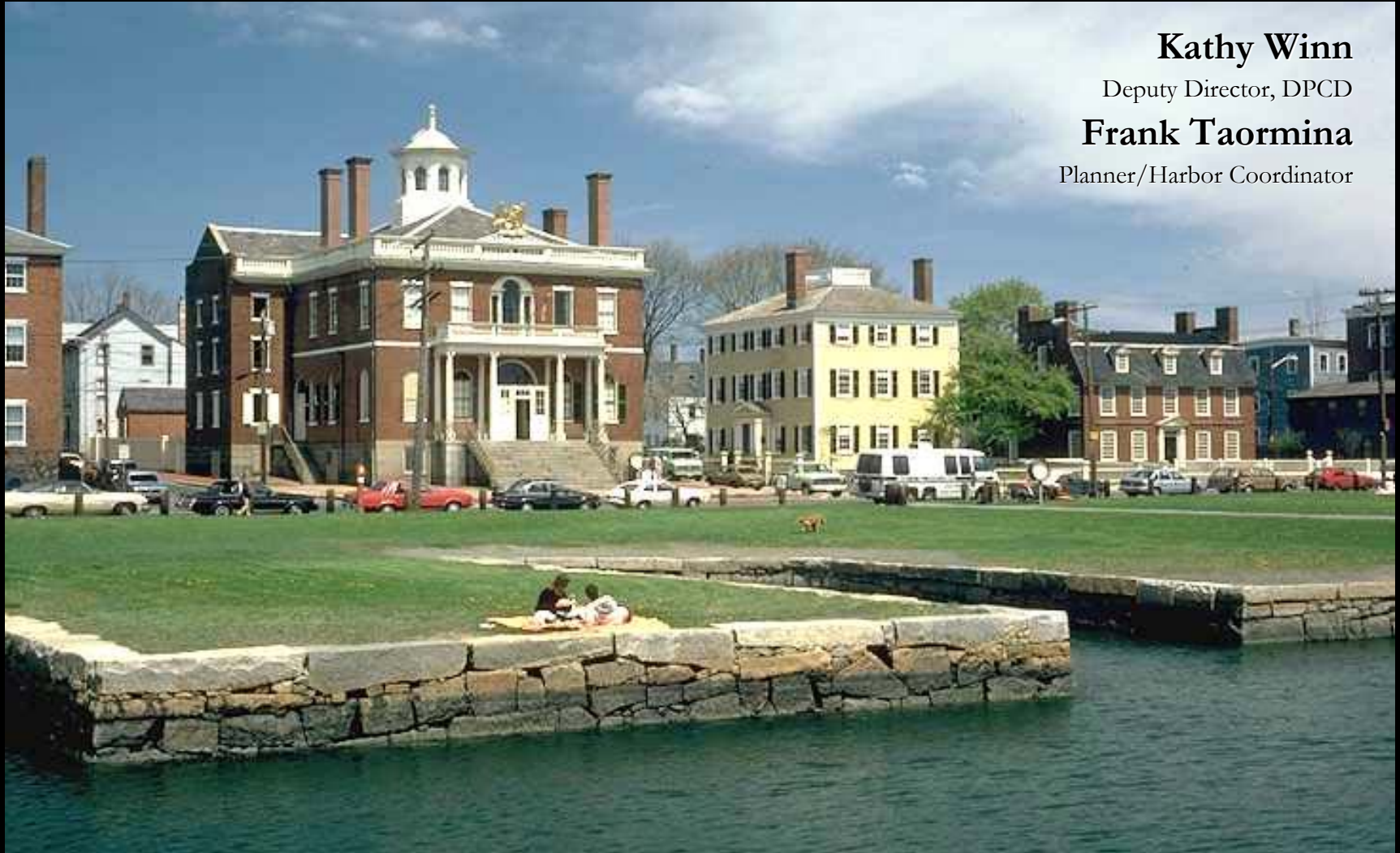




# CITY OF SALEM

## Report on the Salem Waterfront



**Kathy Winn**

Deputy Director, DPCD

**Frank Taormina**

Planner/Harbor Coordinator

◆ Historic Derby Street Neighborhood Association Meeting ◆



# CITY OF SALEM

## Salem Harbor Plan Update

- 2000 Harbor Plan must be renewed pursuant to State Regulations (301 CMR 23.06)
- Public Process
- The City DPCD and members of the Harbor Plan Implementation Committee have selected Fort Point Associates, Inc. to update the Harbor Plan.

### SALEM HARBOR PLAN



The City of Salem, Massachusetts  
Mayor Stanley J. Usovicz, Jr.

May 2000



# CITY OF SALEM

## Harbor Plan Implementation Committee

---

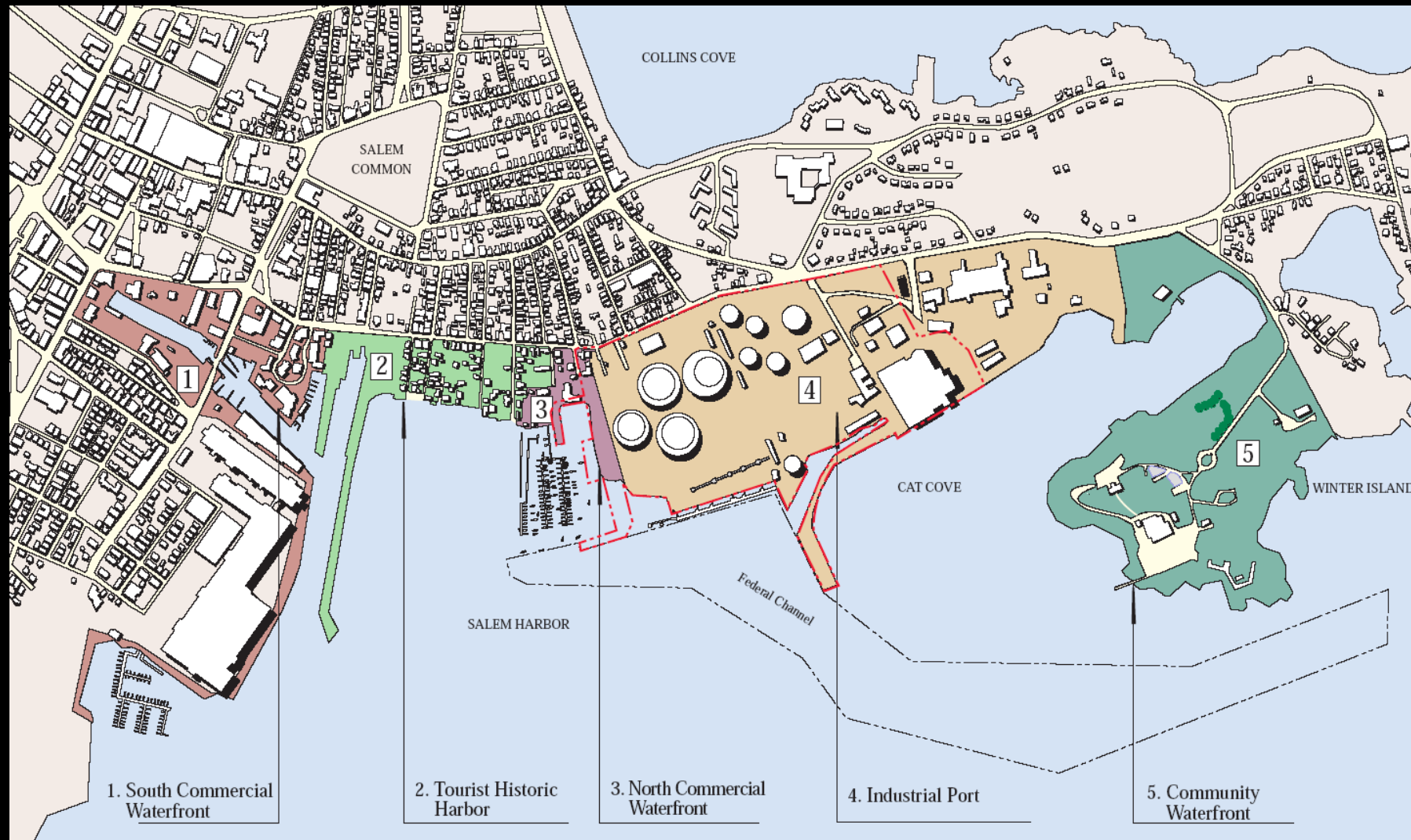
	<b>Fred Atkins</b>	<b>Salem Partnership, Dion Yacht Yard</b>
	<b>Mimi Ballou</b>	<b>Resident, Ward 1</b>
	<b>Craig Burnham</b>	<b>Business Owner</b>
	<b>George Carey</b>	<b>Salem Chamber of Commerce, Business Owner</b>
	<b>Claudia Chuber</b>	<b>Salem Harbor CDC</b>
	<b>Lucy Corchado</b>	<b>City Councilor, Ward 1</b>
	<b>Kevin Cornacchio</b>	<b>Conservation Commission, Chairman</b>
	<b>Malia Griffin</b>	<b>Dominion Energy</b>
	<b>Doug Haley</b>	<b>Resident, Ward 1</b>
	<b>Peg Harrington</b>	<b>Resident, Ward 1</b>
	<b>Annie Harris</b>	<b>Essex National Heritage</b>
	<b>Dolores Jordan</b>	<b>Resident, Ward 1</b>
	<b>Walter Power</b>	<b>Planning Board, Chairman</b>
	<b>Lt. Conrad Prosniewski</b>	<b>Assistant Harbormaster, Police Department</b>
	<b>Patricia Trapp</b>	<b>National Park Service</b>
	<b>Barbara Warren</b>	<b>Salem Sound Coast Watch, Director</b>



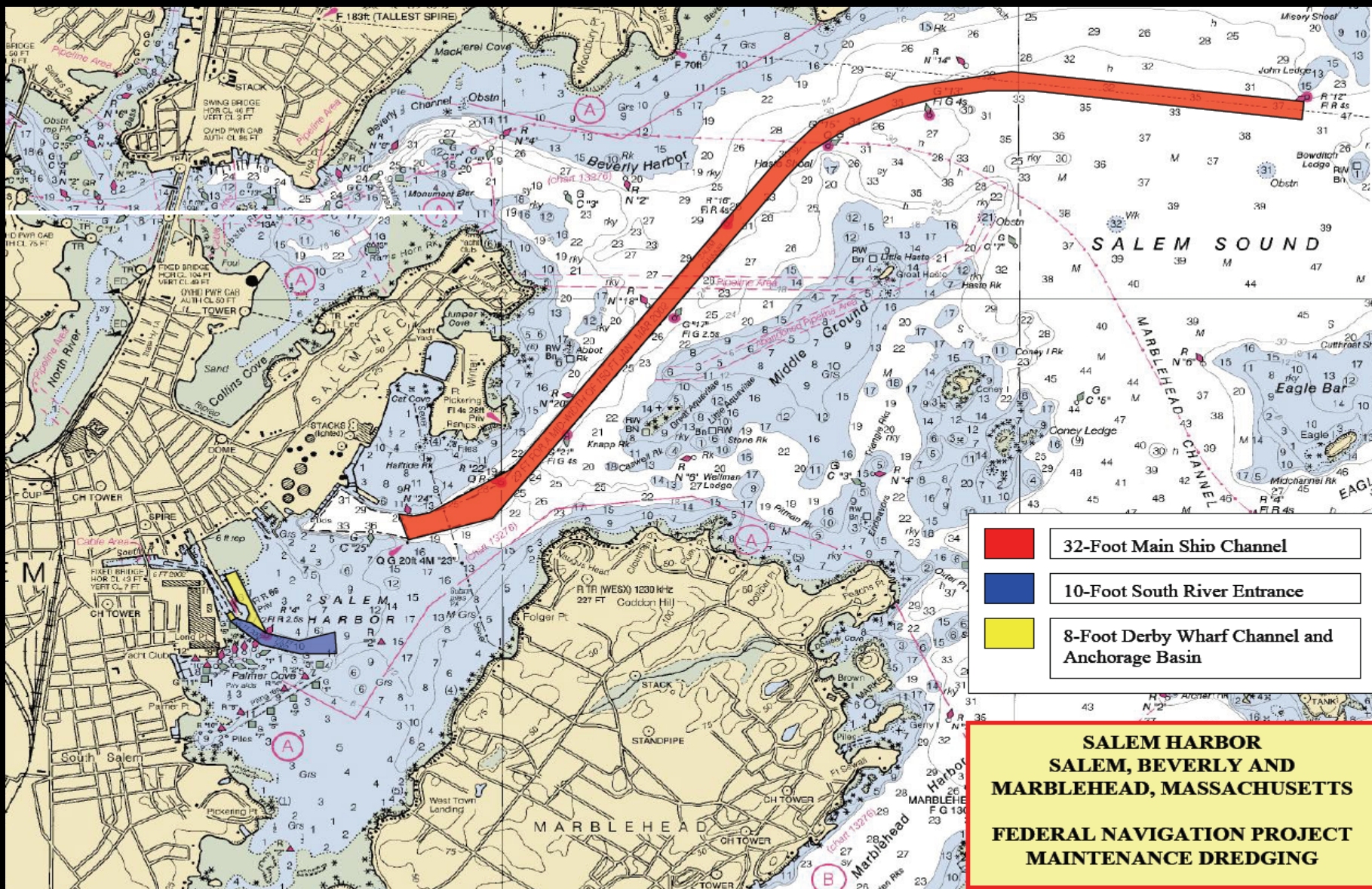


# CITY OF SALEM

## Salem Harbor Planning Areas





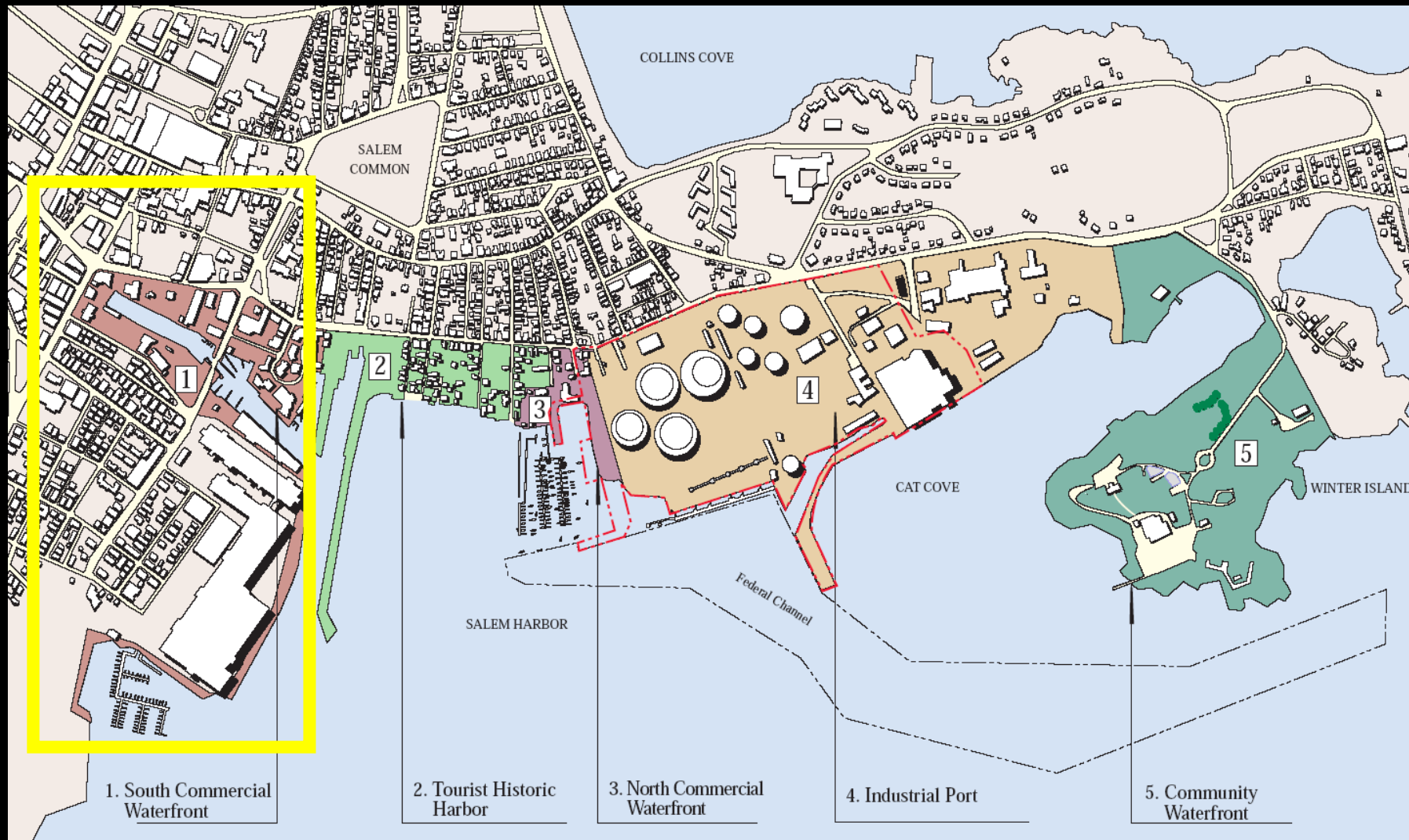






# CITY OF SALEM

## South Commercial Waterfront





# CITY OF SALEM

## South Commercial Waterfront

### Salem Harborwalk

- Proposed harborwalk passes through land owned by City of Salem and Mass Electric Co.
- Schematic design is completed
- Upon final approval from Mass Electric, City will begin permitting process.
- Waterfront park at 15 Peabody Street
- City has begun talks with U.S.Army Corps to potentially dredge South River Basin

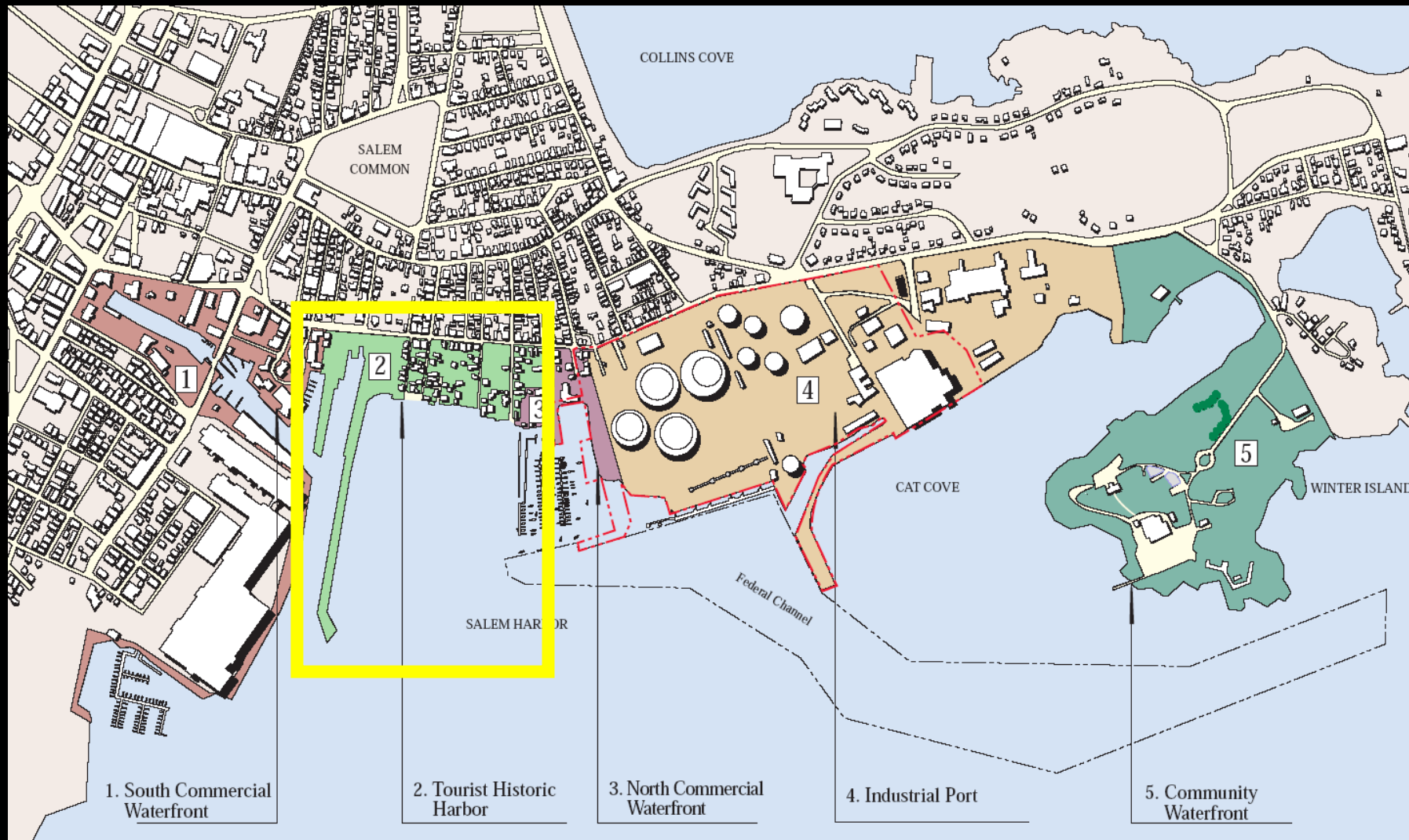






# CITY OF SALEM

## Tourist Historic Harbor







# CITY OF SALEM

## Tourist Historic Harbor

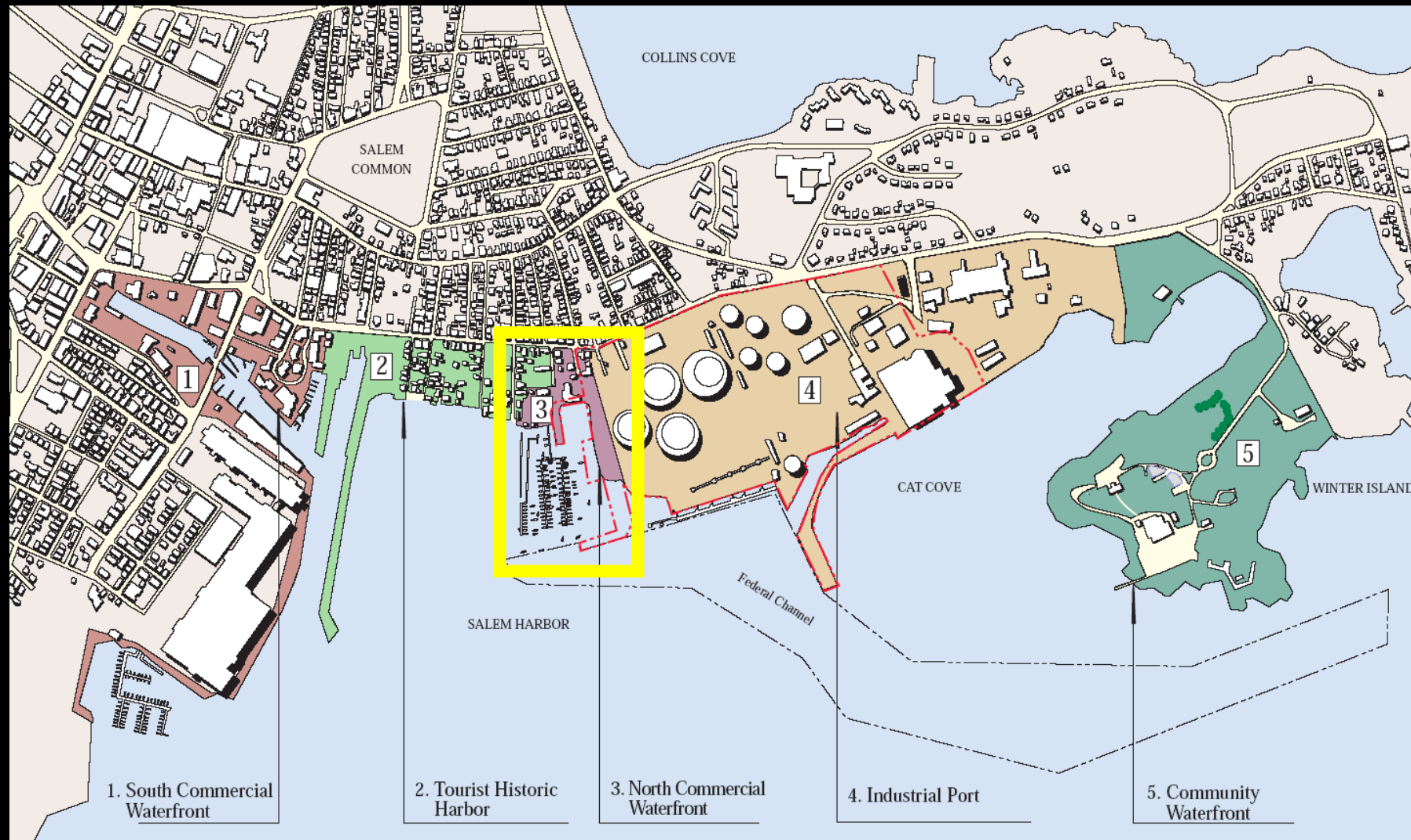
- Continue to work with National Park Service on programs and improvements to further public access and enhance historic waterfront area
- Visiting Tall Ships into Salem and support for *The Friendship* to visit other ports
- Comprehensive Signage to identify Historic Waterfront District
- Maintenance dredging of South River Entrance, Derby Wharf Channel, and Derby Wharf Anchorage Area has recently been completed





# CITY OF SALEM

## North Commercial Waterfront







# CITY OF SALEM

## North Commercial Waterfront

### The Salem Ferry & Interim Ferry Pier

- \$646,600 construction of interim ferry pier and other landside improvements
- \$2.3 million from EOT to purchase Ferry Vessel
- Successful inaugural season of the Salem Ferry (2006)
- MBTA Pass acceptance, site improvements, fueling station, and advertisement during the off-season to increase ridership





# CITY OF SALEM

## North Commercial Waterfront

### Acquisition of Blaney St Property

- Obtained \$750,000 from the Governor's Seaport Council toward the acquisition of property
- City is planning to start negotiating sale of property with Dominion Energy in near future







# CITY OF SALEM

## North Commercial Waterfront

### Salem Wharf

- Obtained \$200,000 for Planning, Design, Engineering, and Permitting
- Obtained \$197,300 for Phase II dredge sampling & permitting (work underway)
- Located within a Designated Port Area (DPA)
- Wharf planned to be a multi-use marine industrial facility with supporting DPA uses, such as commercial fishing, marine terminal, fuel docks, etc.

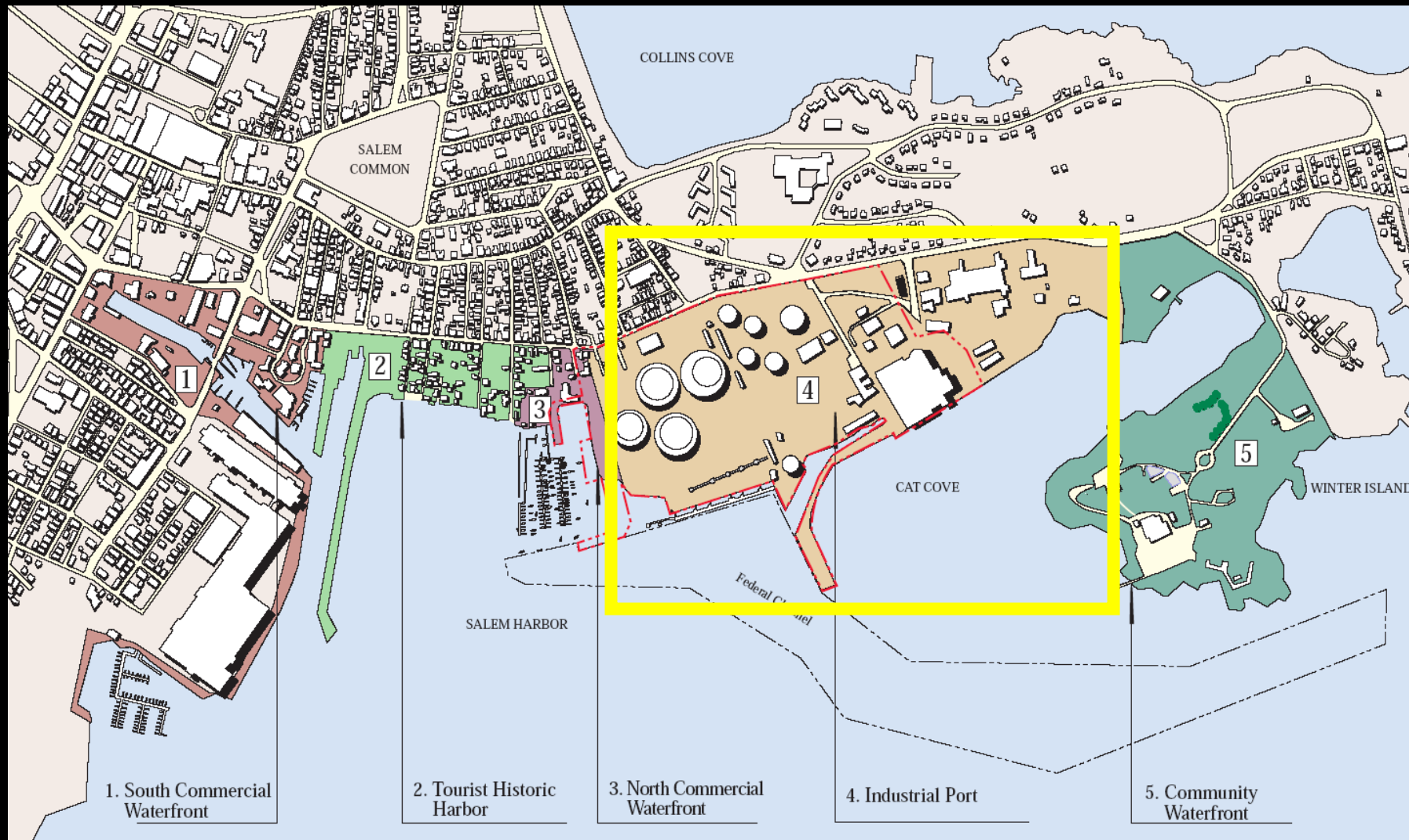


Concept Plan of Salem Port Facility



# CITY OF SALEM

## Industrial Port







# CITY OF SALEM

## Industrial Port

- Consists of two parcels: Dominion Energy & South Essex Sewerage District (SESD)
- Federal Navigation Channel recently dredged to 32ft





# CITY OF SALEM

## Community Waterfront







# CITY OF SALEM

## Community Waterfront

---

### Winter Island

---

- City received a \$15,000 grant from the MHC
- Former U.S. Coast Guard Barracks Re-Use Feasibility Study (underway)
- Redevelopment and Operation of Winter Island

