



Ryan Brennan Memorial Skate Park Salem, MA

Presentation November 27, 2017



Stantec



Introduction



Our Project Team



Your Project



Introduction



Action sport pros turned designers & landscape architects

Largest, most notable action sport portfolio worldwide

Sense of community pride

Creating parks that are welcome spaces

Defined pedestrian and spectator space, integrated landscaping elements



Our Action Sport Team



Mike
McIntyre
RLA
Principal,
Action Sports
Austin, TX



Kanten
Russell
Action Sports
Lead
San Diego, CA



Chris
Long
EIT
Community
Development
Engineer
Boston, MA



Josh
Atkinson
RLA
Landscape
Architect
Boston, MA

25
years of
skateboarding
experience



Kanten Russell

Action Sports Lead
San Diego, CA

- **13** years as a professional skateboarder
- Design of over xx Skate Parks
- Produced his own line of skateboarding goods





25
years of
skateboarding
experience



Colby Carter

Senior Designer, Action Sports
Phoenix, AZ

- Over **200** public sector projects
- Over **25** years skateboarding experience
- Over **10** years of professional career experience



Your Project

Key Components



**Accessibility
& Parking**



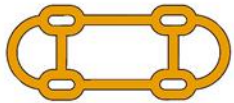
Functionality



**Existing Site
Conditions**

Opportunities & Constraints | Skate Park

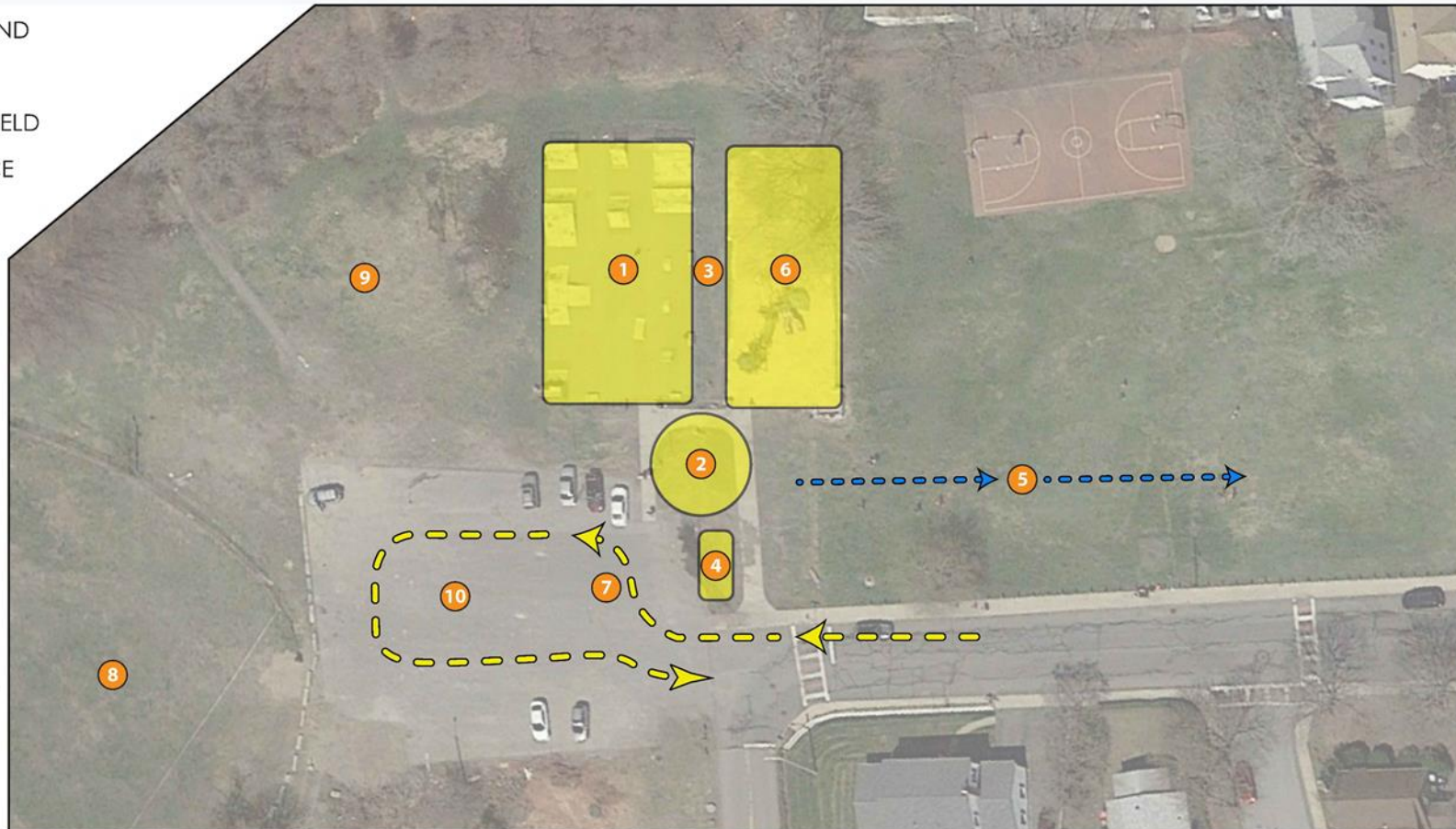
- 1 PROPOSED SKATEPARK LOCATION
- 2 PROPOSED PARK ENTRANCE AND MEMORIAL
- 3 SKATEPARK AND PLAYGROUND SPECTATOR AREA
- 4 RAIN GARDEN FROM ALTERNATIVE FUNDING
- 5 EXISTING DRAINAGE LINE
- 6 EXISTING PLAYGROUND
- 7 DROP OFF ZONE
- 8 EXISTING BASEBALL FIELD
- 9 EXISTING OPEN SPACE
- 10 SITE PARKING



SKATEPARK DESIGN OBJECTIVE

DESIGN A SUSTAINABLE, MULTI-GENERATIONAL, SKATEPARK THAT REFLECTS THE CHARACTER OF THE LOCAL COMMUNITY.

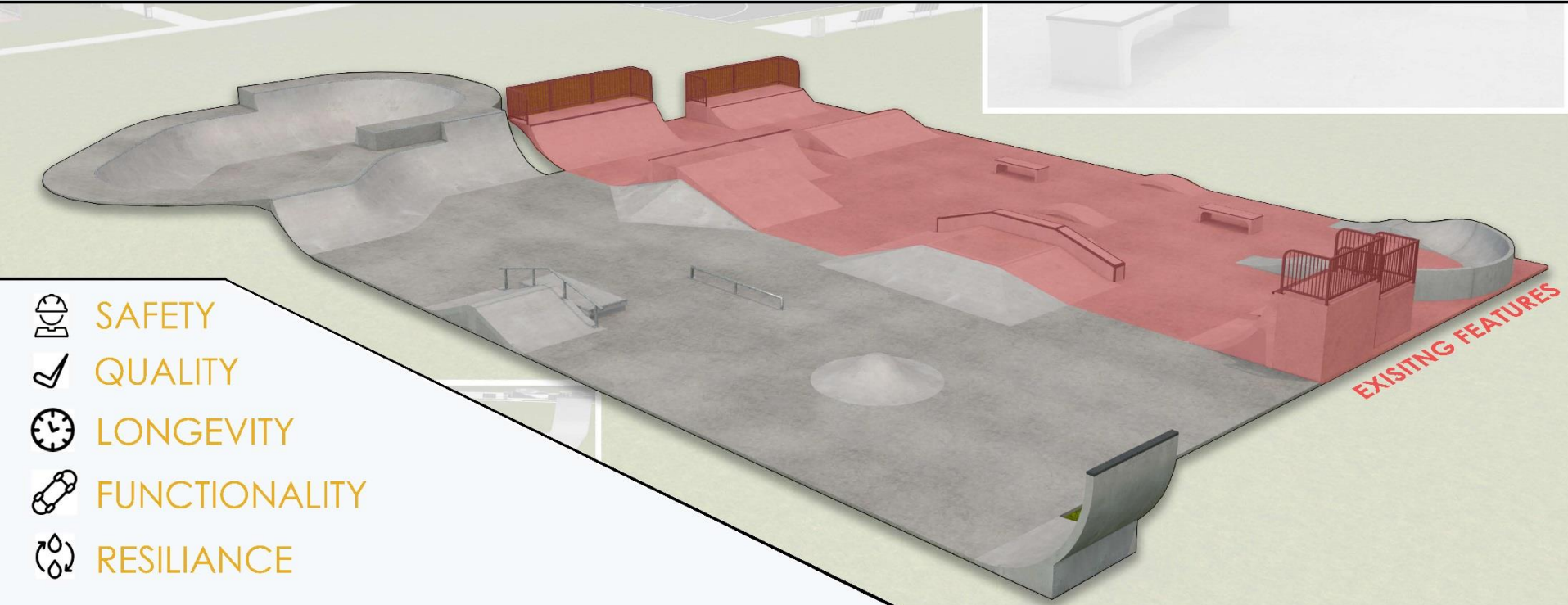
THE PARK SHALL INCLUDE FEATURES THAT FLOW WELL, IN LINES WHICH SAFELY ACCOMMODATE USERS OF DIFFERENT INTERESTS AND ABILITIES.



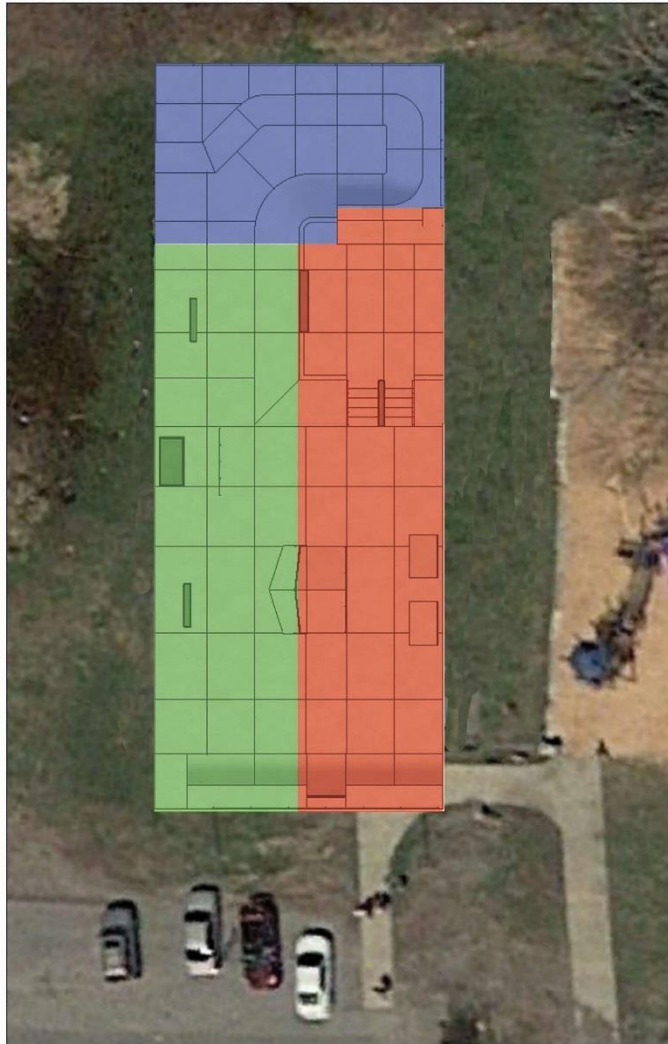
Opportunities & Constraints | Skate Park



Opportunities & Constraints | Skate Park



Opportunities & Constraints | Skate Park



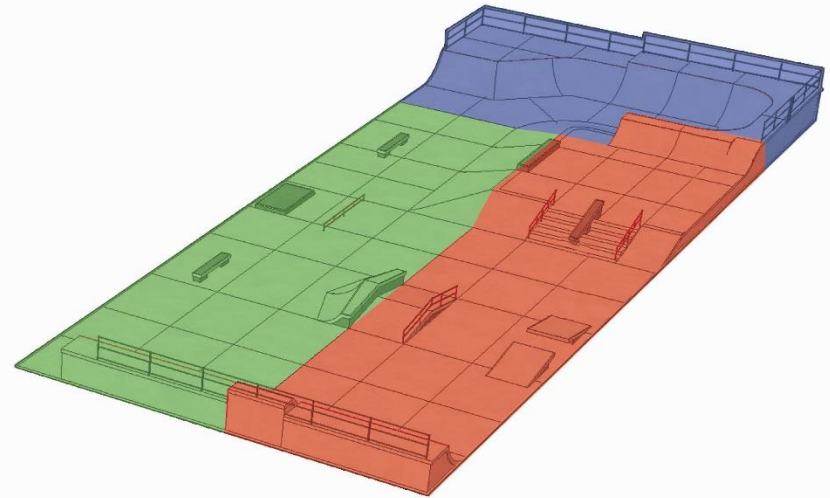
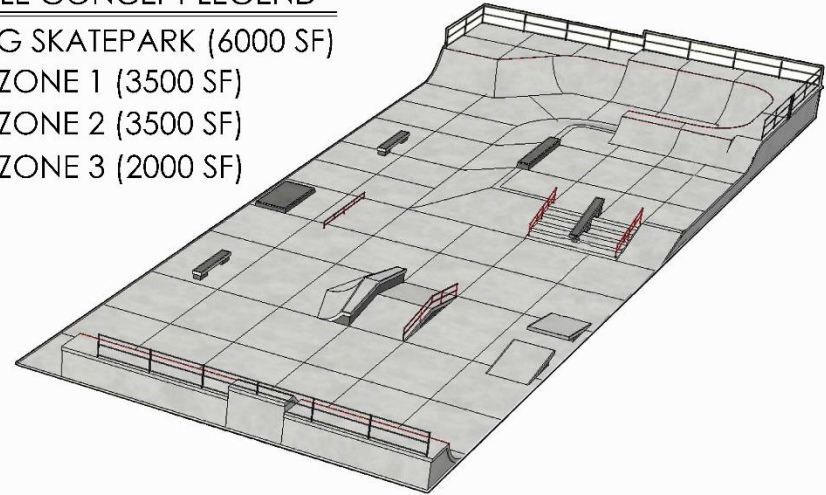
EXAMPLE CONCEPT LEGEND

EXISTING SKATEPARK (6000 SF)

ZONE 1 (3500 SF)

ZONE 2 (3500 SF)

ZONE 3 (2000 SF)





Community Outreach



**Public
Workshops**



**Social
Media**



**User
Feedback**



**Listen.
Learn.
Create.**

What differentiates good from great action sport parks is how the community was involved in the process.

Action Sports

Creating expressive spaces

Action sports are all about freedom and passion expressed through movement, speed, and skill. Our action sport pros-turned-designers feel that passion first-hand and work to infuse the thrill of being an athlete into all of their designs...

MORE

250
PROJECTS



Haldimand County celebrates the opening of two new community skate plazas in Caledonia and Dunnville.



A place to call their own, the Lynch Family Skate Park captures the industrial tinged edge of the Boston skateboarding culture.



Social Media

We connect with communities even after the project is over.

Lindo Lake Skate Park in Lakeside, CA is San Diego County's first custom concrete skate park.

Designing the Park | Lynch Family Skate Park, Cambridge, MA



Designing the Park | Lynch Family Skate Park, Cambridge, MA



MASTERPLAN PROPOSED

Designing the Park | Lynch Family Skate Park, Cambridge, MA



Agencies:

- Charles River Conservation
- DCR
- MassDOT
- City of Cambridge DPW
- Con Com
- MWRA
- NSTSR
- MBTA
- CRWA
- New Charles River Basin
- Citizens Advisory Committee

Site Conditions:

- Contaminated Site
- 3' cap requirement
- No off-site removal of soil

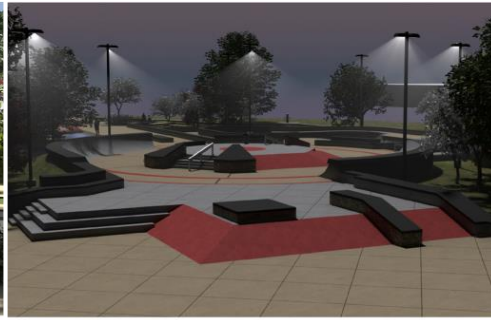
Designing the Park | Charles River Skate Park, Cambridge, MA



Green Strategies



Native Vegetated Bio- Swale



Integrated Solar Lighting



Recycled Granite Drainage Swale



Bio- Retention Drain Inlet Feature



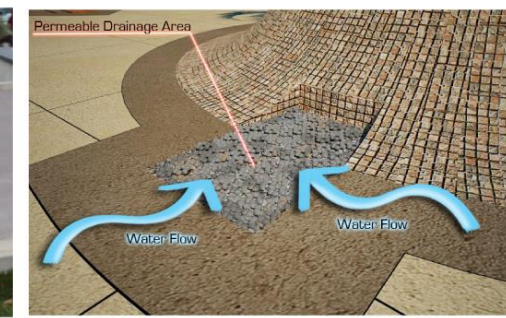
Solor Lighted Parking



Recycled Granite Steps and Ledge



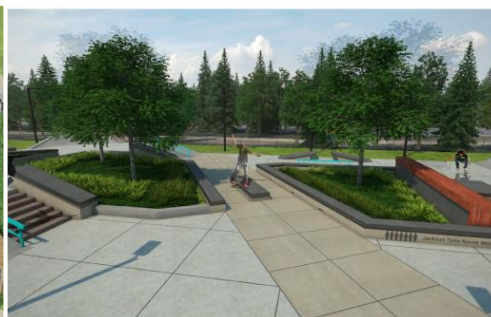
Recycled Granite Drainage Channel- Plan



Permeable Drainage Area



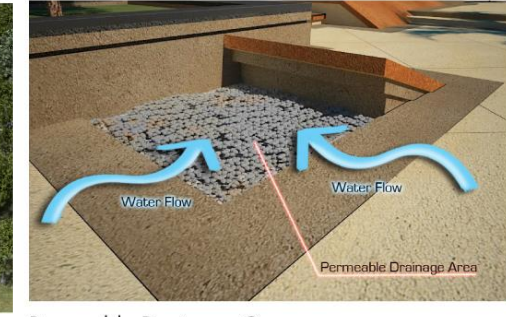
Rain Garden Inclusion



Rain Garden Planters



Mixed- Use Skate Plaza



Permeable Drainage Gap



Additional Experience



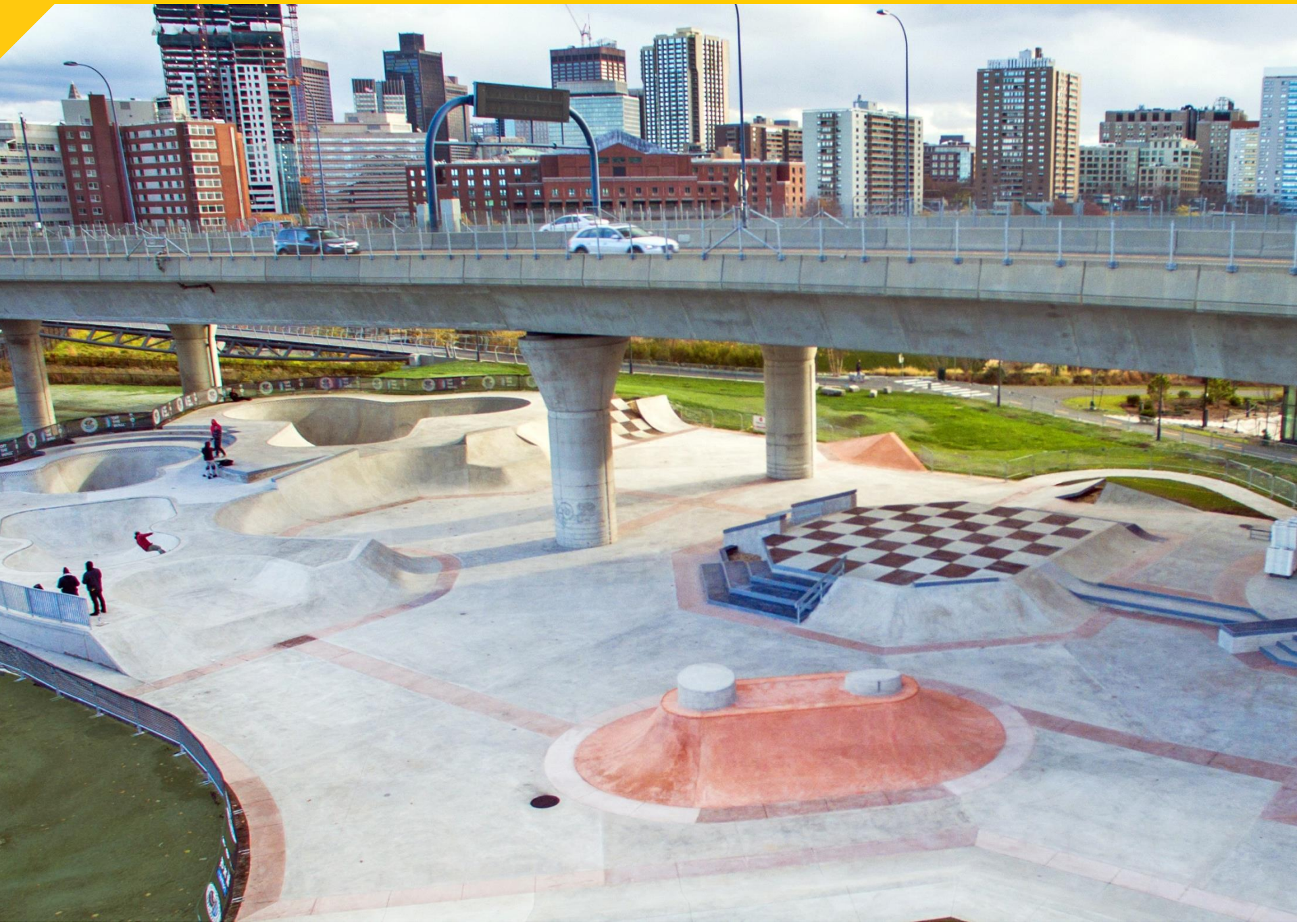
Projects



Competition-
Level Parks



References









EXISTING SKATE PARK

RE-DESIGNED FUN BOX:
550 SF.

A-FRAME/ KICKER TO KICKER
FEATURE/ HANDRAIL:
450 SF.

RE-DESIGNED BOWL/
EXTEND TOP DECK:
2,400 SF.

EXTENDED TOP DECK/ EXTENDED
HALF PIPE/ QUARTER PIPE/ BANK/
HANDRAIL/ GRIND LEDGE:
2,150 SF.

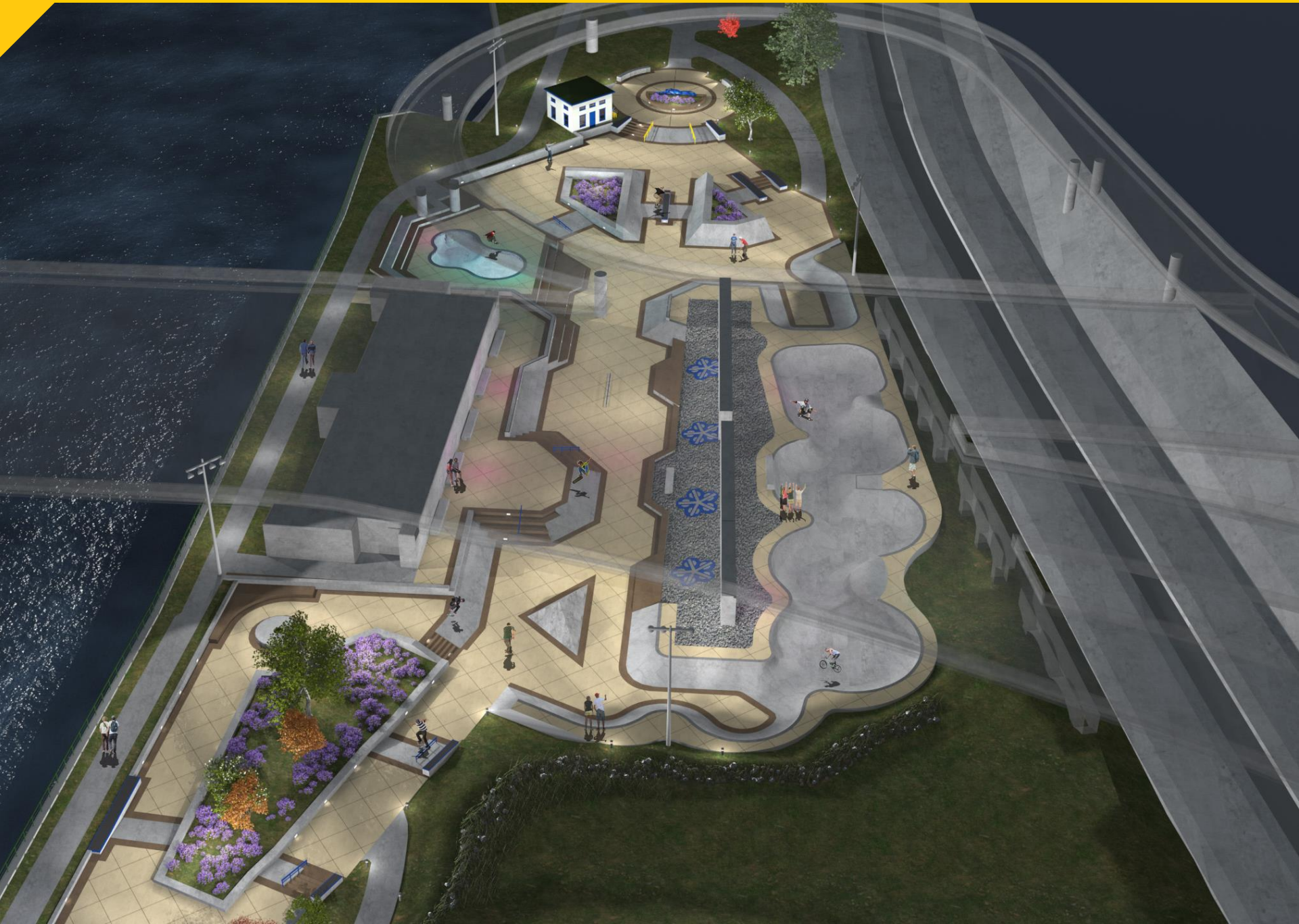
TOTAL IMPROVEMENTS:
5,550 SF.



An aerial photograph of Town Skate Park in Oakland, CA, overlaid with a 3D architectural rendering of renovation plans. The park is divided into two main sections: a yellow-shaded rectangular area at the top and a larger red-shaded area below it. The yellow area contains a long, narrow ramp and a curved ramp. The red area contains a large hexagonal bowl, a long curved ramp with a circular logo, and several smaller ramps and ledges. Orange handrails are shown on various ramps. The surrounding area includes a parking lot with cars and a street.

Phase 1
Skate Park Renovation

Phase 2
Skate Park Renovation













19,000

The square footage of under-utilized, downtown space we transformed into a wheel-friendly skate plaza in Poplar Bluff, MO









Go to stantec.com/actionsports
to see more projects and videos

