

SALEM INTERMODAL STATION

November 13, 2012
Public Meeting



NOVEMBER 13, 2012 PUBLIC DESIGN PRESENTATION

- ✓ Purpose of Feb 16 discussion: *input on project function & features*
- ✓ Purpose of April 9 discussion: *input on building design strategies*
- ✓ Purpose of June 26 discussion: *input on suggested design proposal*
- Purpose of tonights discussion: *input on refined design proposal*



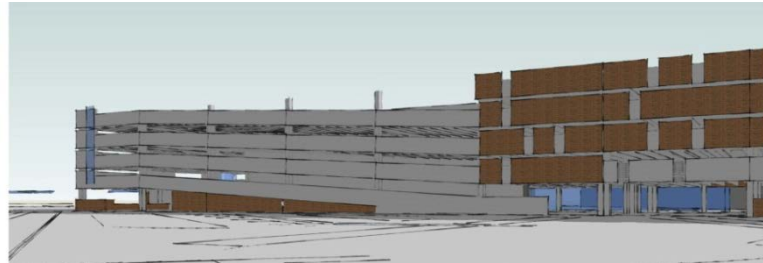
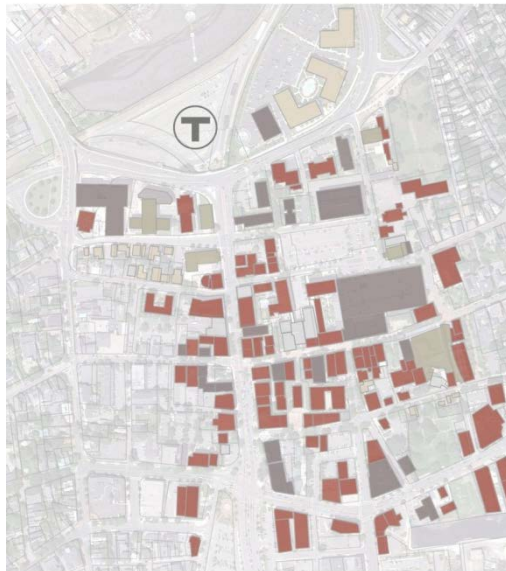
Discussion Topics:

- Progress update
- Design refinements
- Looking ahead



Design Progress:

- ✓ Fall/Winter 2011: Subsurface investigations
- ✓ Feb 16, 2012: Initial public meeting - planning
- ✓ April 9, 2012: Second public meeting – design strategies
- ✓ June 26, 2012: Third public meeting – 30% design



Design Progress:

- ✓ Fall/Winter 2011: Subsurface investigations
 - ✓ Feb 16, 2012: Initial public meeting - planning
 - ✓ April 9, 2012: Second public meeting – design strategies
 - ✓ June 26, 2012: Third public meeting – 30% design
-
- November 2012: Fourth public meeting – 60% design
 - March 2013: Fifth public meeting – 90% design
 - Late Spring 2013: 100% design, construction begins

Permitting Progress:

- ✓ June 15, 2012: MEPA EENF filing
- ✓ June 28, 2012: MEPA public meeting
- ✓ August 2012: MEPA EIR waiver granted
MEPA process complete



Permitting Progress:

- ✓ June 15, 2012: MEPA EENF filing
- ✓ June 28, 2012: MEPA public meeting
- ✓ August 2012: MEPA EIR waiver granted

- ✓ October 11, 2012: Chapter 91 public meeting
- ✓ November 8, 2012: Chapter 91 public comment period closed
- Winter 2012-13: Chapter 91 comment review & response

- ✓ October 25, 2012: Archeology permit received
- December 2012: Archeology fieldwork scheduled for completion

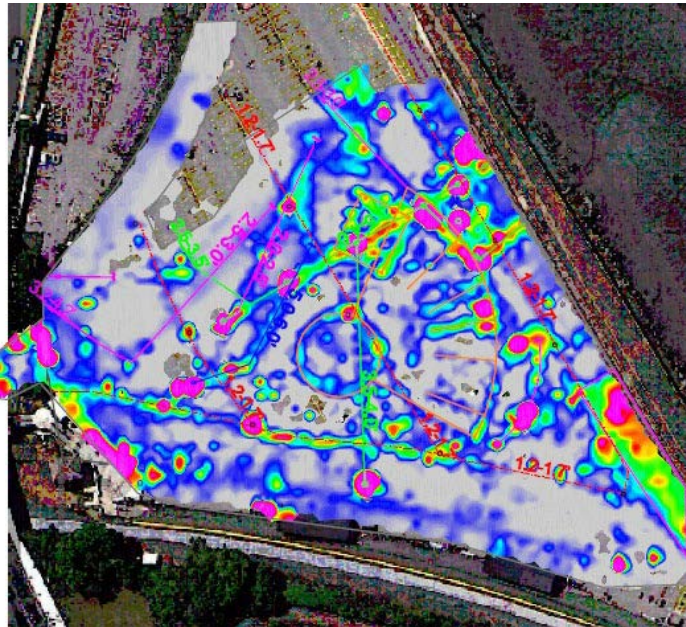
- Winter 2012-13: Salem Conservation Commission filing & review
- Winter 2013-13: MA Historic – signal tower rehab. review

Construction Progress:

- ✓ November 9, 2012: Construction Manager selected –
Welcome to the team, Consigli Construction!

Construction Progress:

- ✓ November 9, 2012: Construction Manager selected –
Welcome to the team, Consigli Construction!
- ✓ November 5, 2012: Archeological excavation commences
 - December 2012: Archeology fieldwork scheduled for completion



Construction Progress:

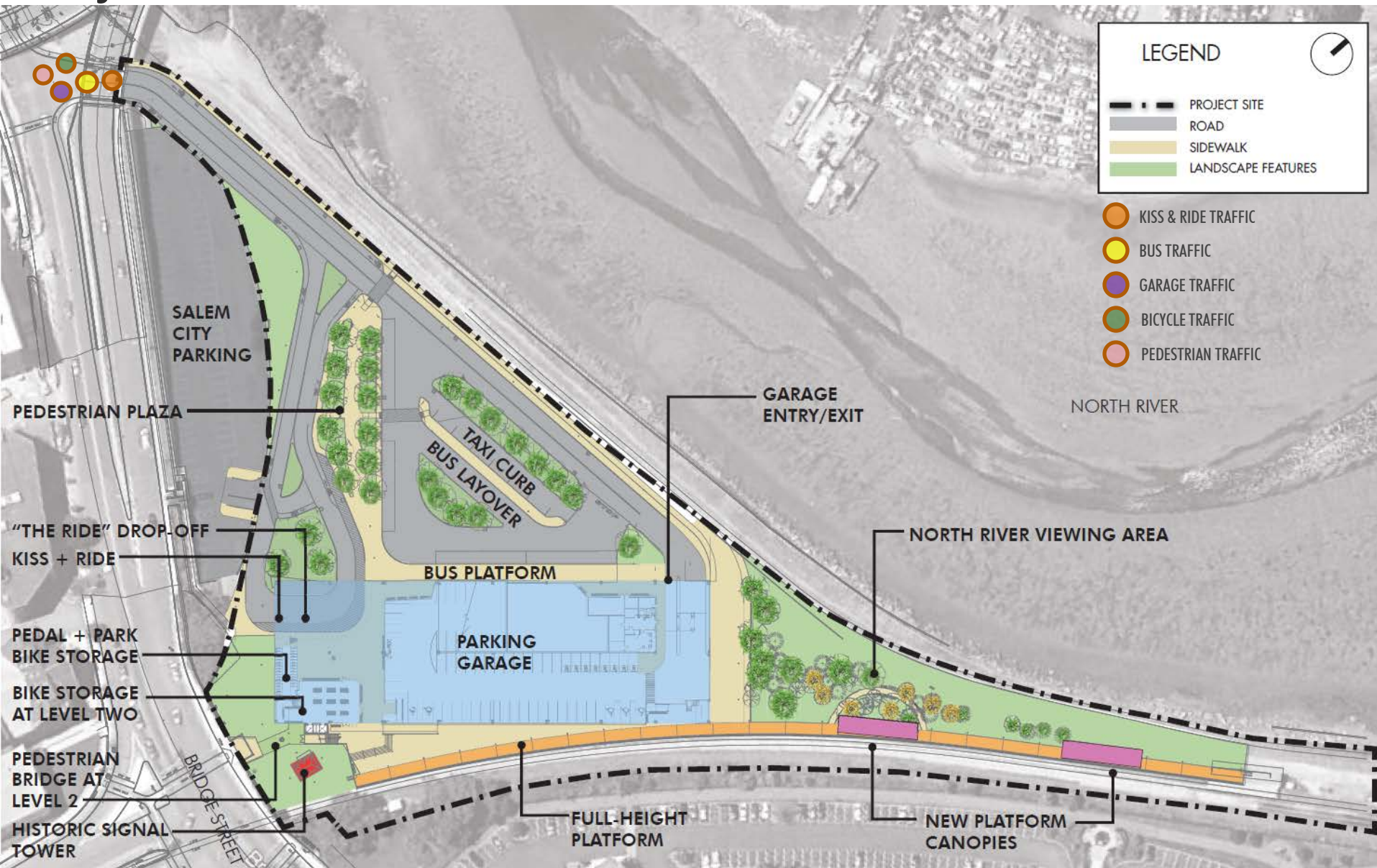
- ✓ November 9, 2012: Construction Manager selected –
Welcome to the team, Consigli Construction!
- ✓ November 5, 2012: Archeological excavation commences
- December 2012: Archeology fieldwork complete
- Winter 2012-13: Construction phasing plan development
- *March 2013* *Public meeting – construction phasing*
- Spring 2013: Preparation of alternative parking lot
- May-June 2013: New temporary traffic patterns in effect
- Early summer 2013: Construction start
- Fall 2014: Substantial completion, garage & station open
- Winter 2014-15: Final completion, project complete

Design refinement

- Waiting area
- Exterior expression
- Subsurface conditions



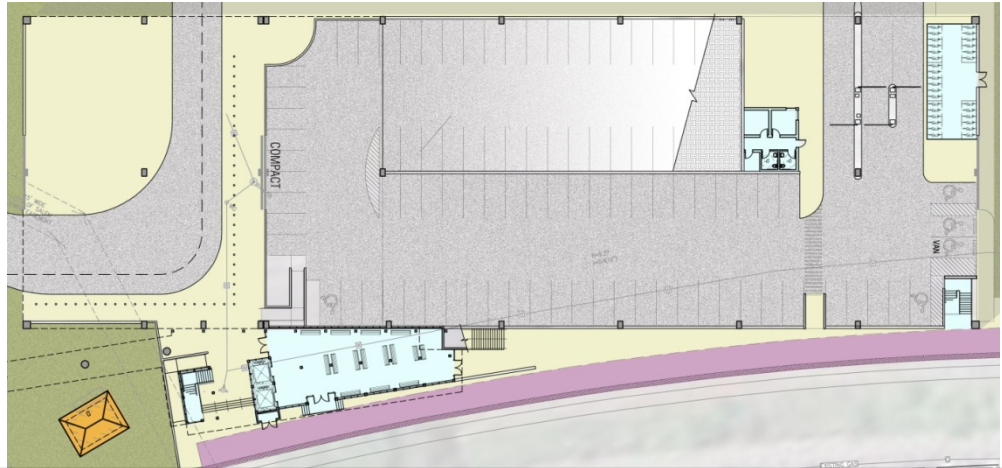
Project overview



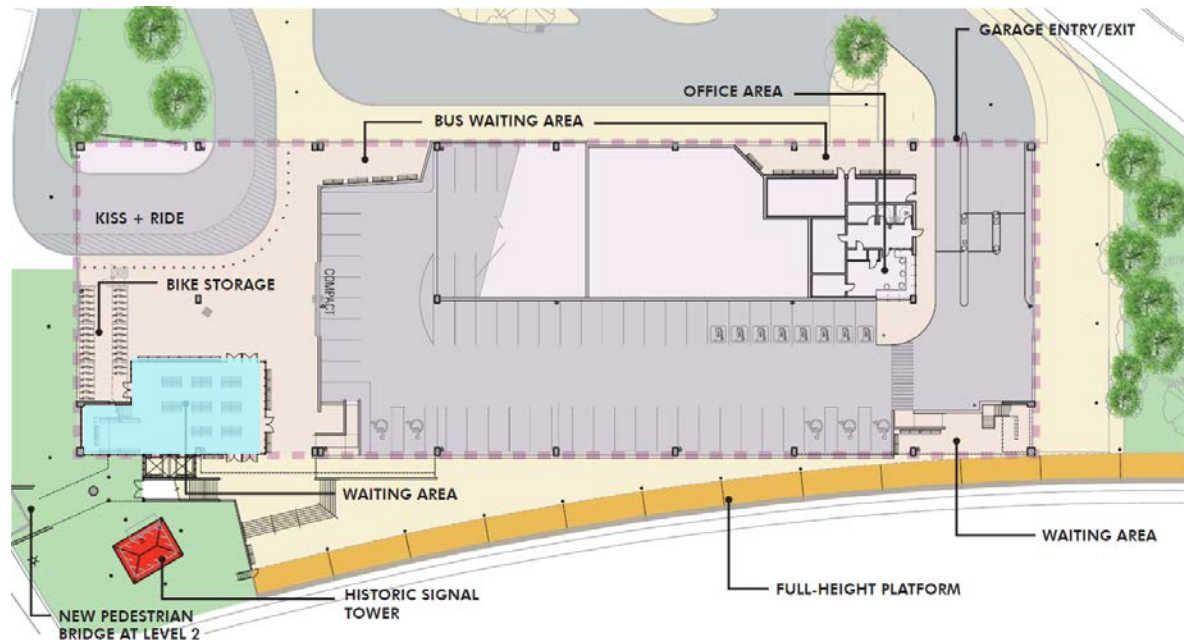
Site plan – PRIMARY FUNCTIONAL ELEMENTS

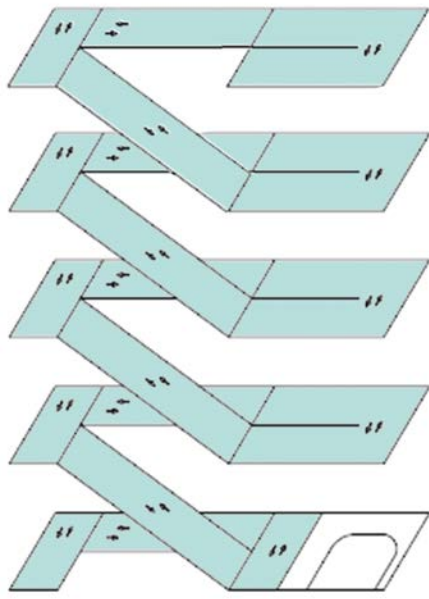
Waiting areas

Original design June 2012



Developed design Sept 2012



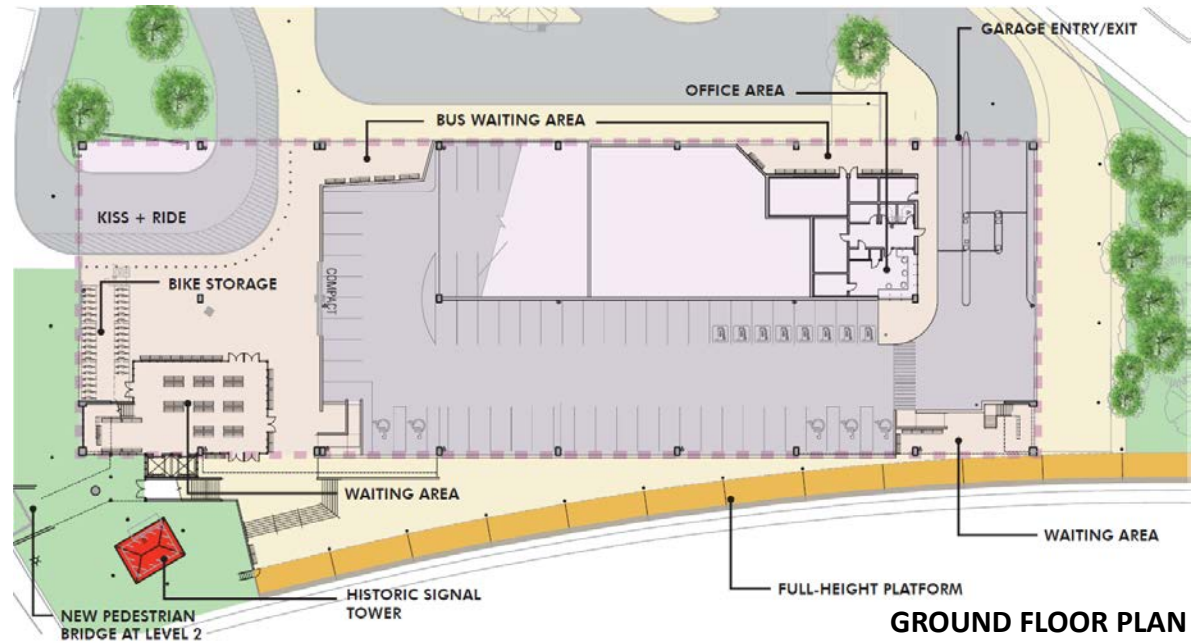


CIRCULATION DIAGRAM

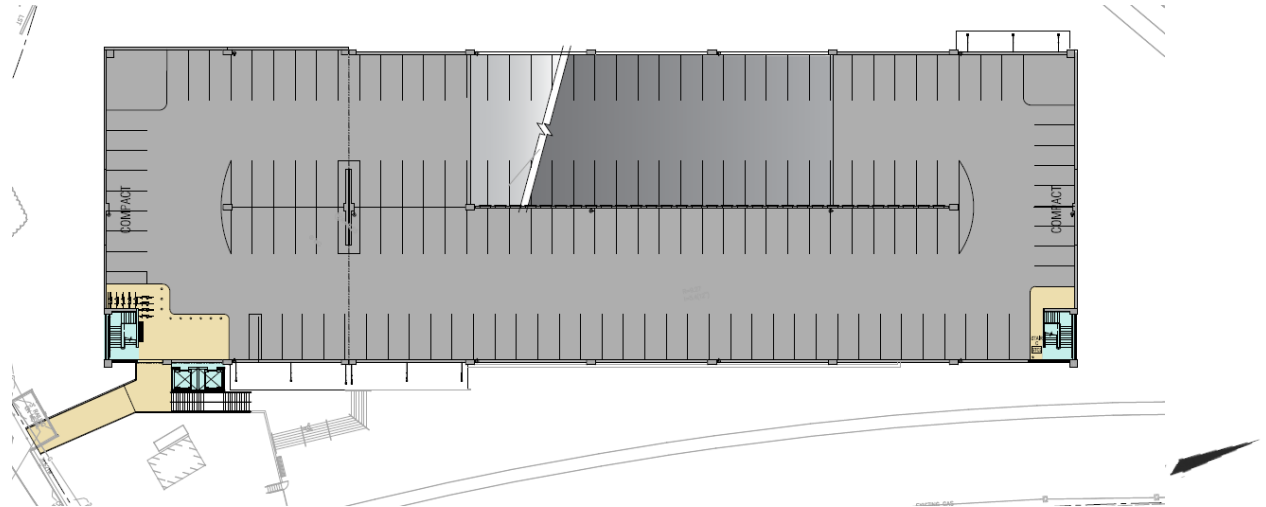
CAR COUNT TABLE

LEVEL	CARS	TOTAL
G	99	99
2ND	161	260
3RD	162	422
4TH	159	581
5TH	108	689

TARGETED TOTAL PARKING SPACES: 700



GROUND FLOOR PLAN



2ND FLOOR PLAN
(upper floors sim.)

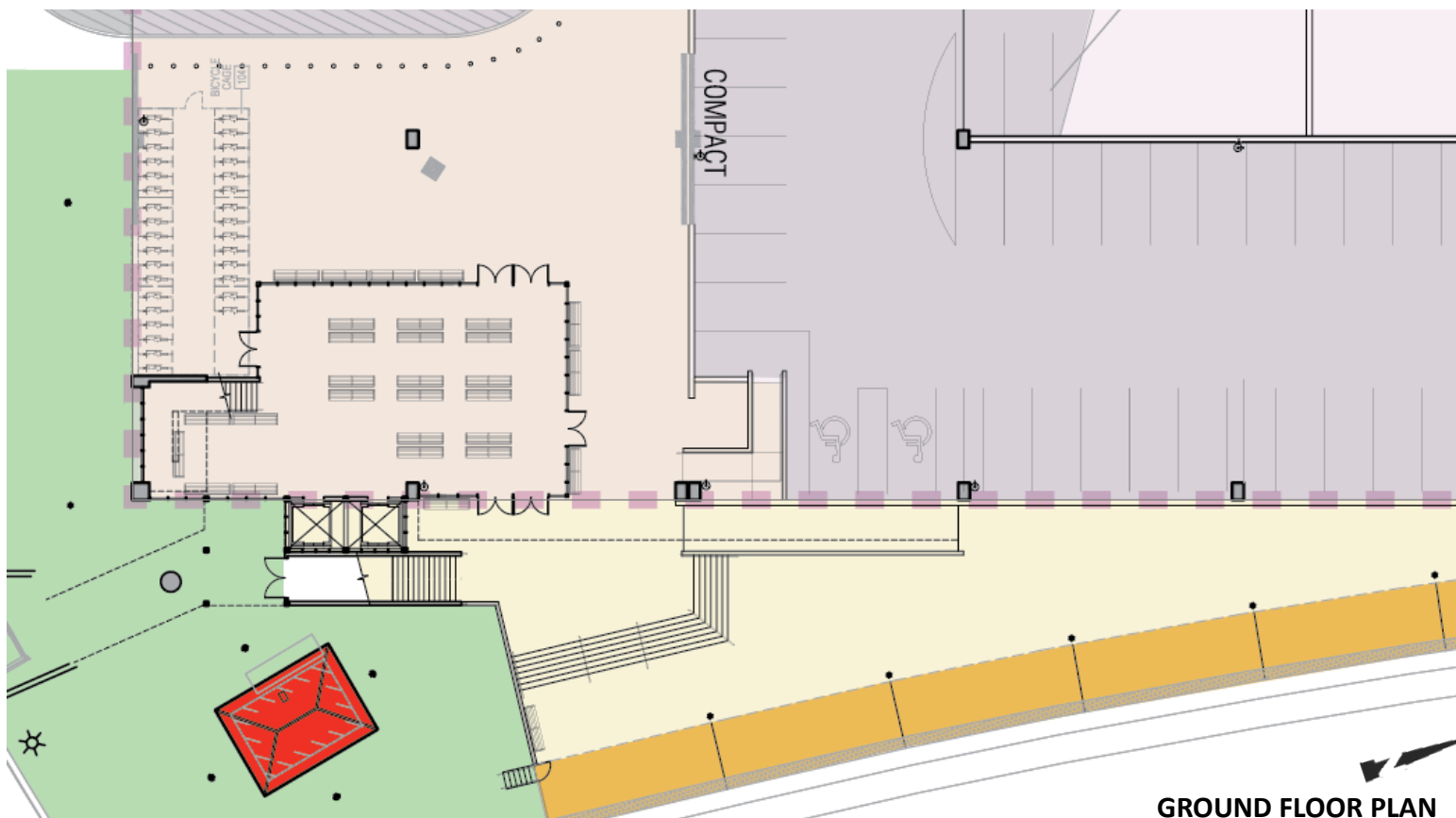
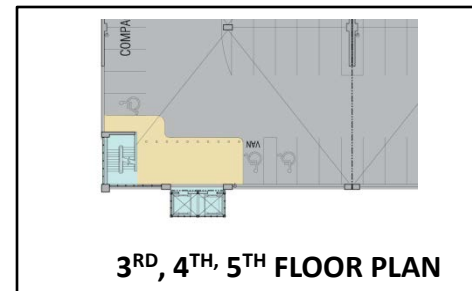
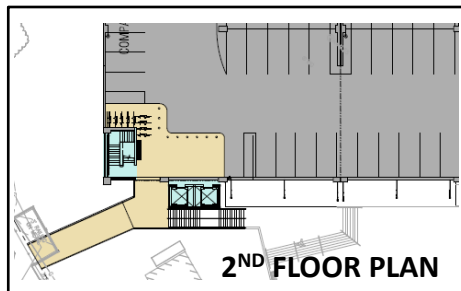
Enlarged plans



Massachusetts Bay
Transportation Authority

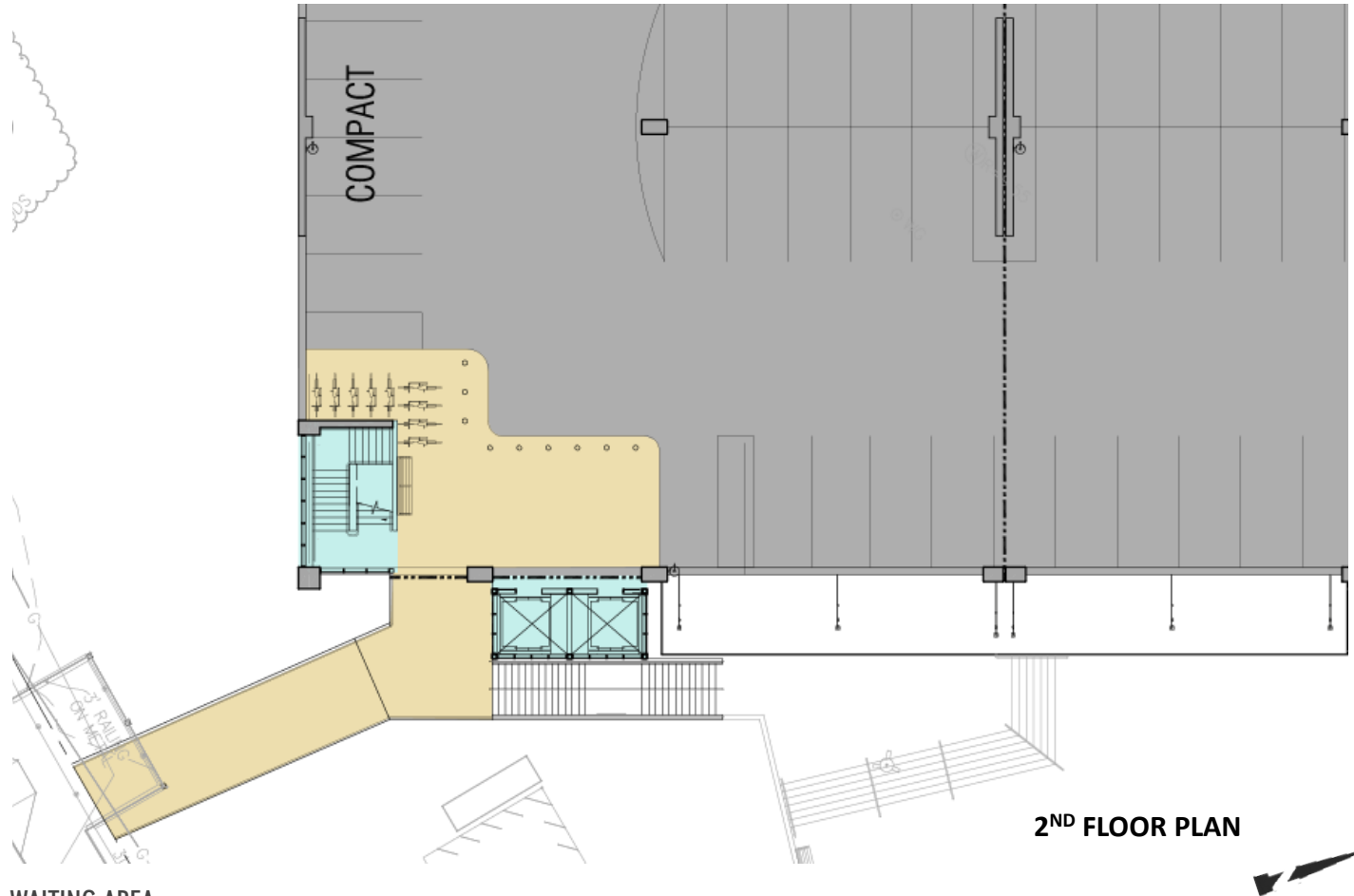
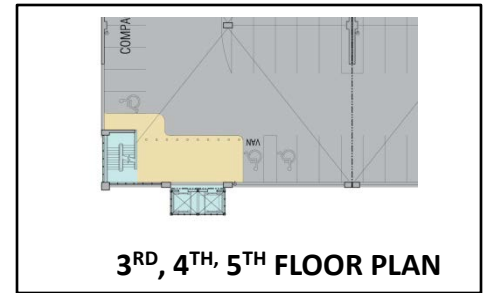
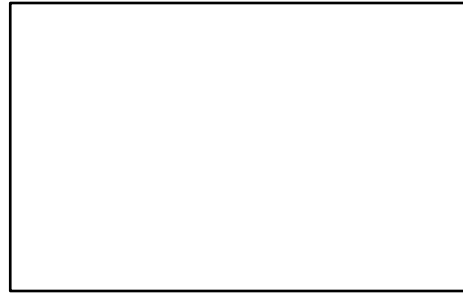
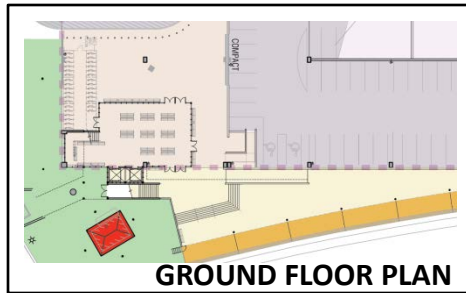
FENNICK | McCREDIE
architecture ltd

Salem Station Improvements and Parking Garage, Bridge Street, Salem, MA
Public Meeting- Project Update
November 13, 2012



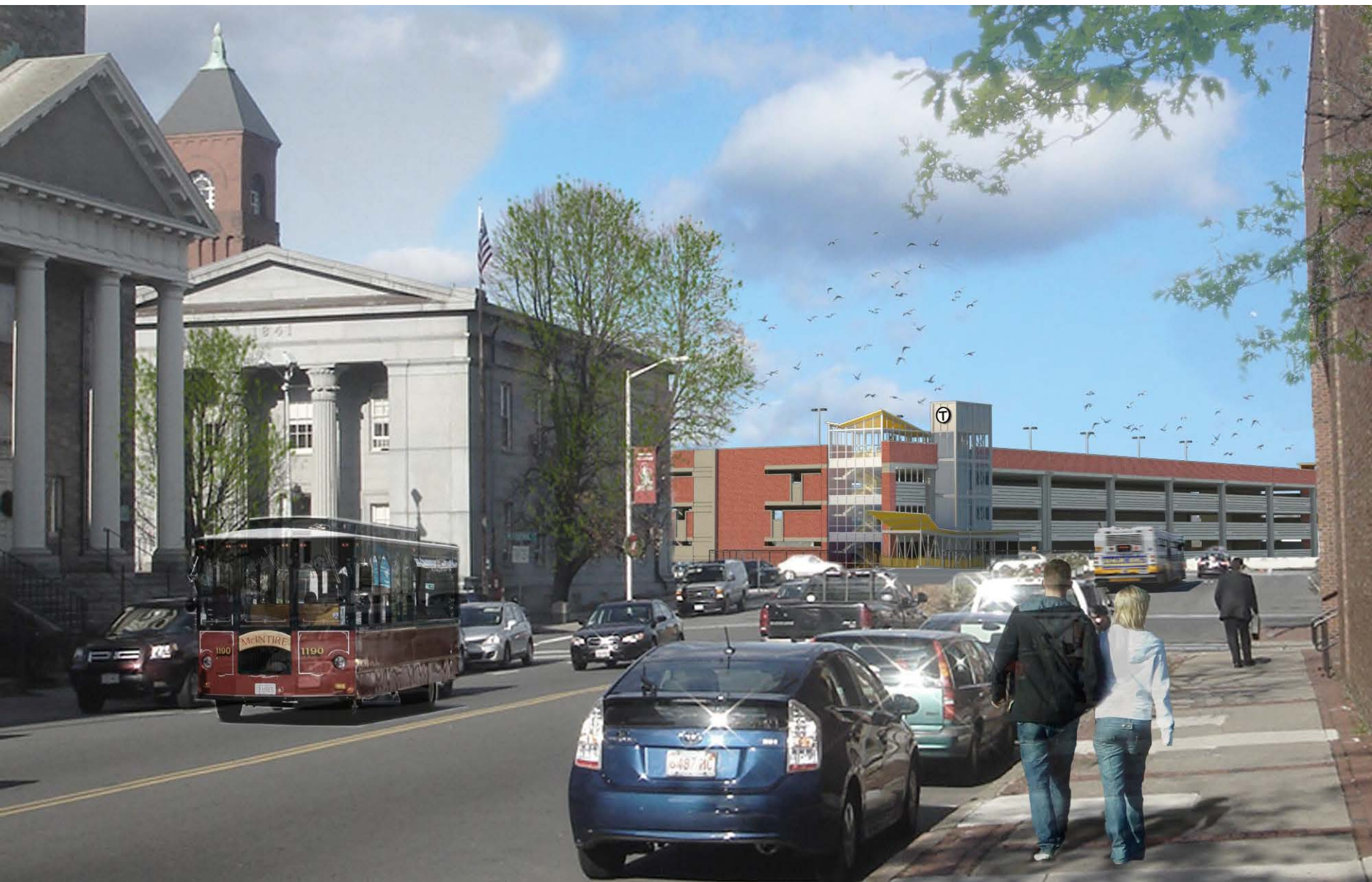
Enlarged plans - WAITING AREA





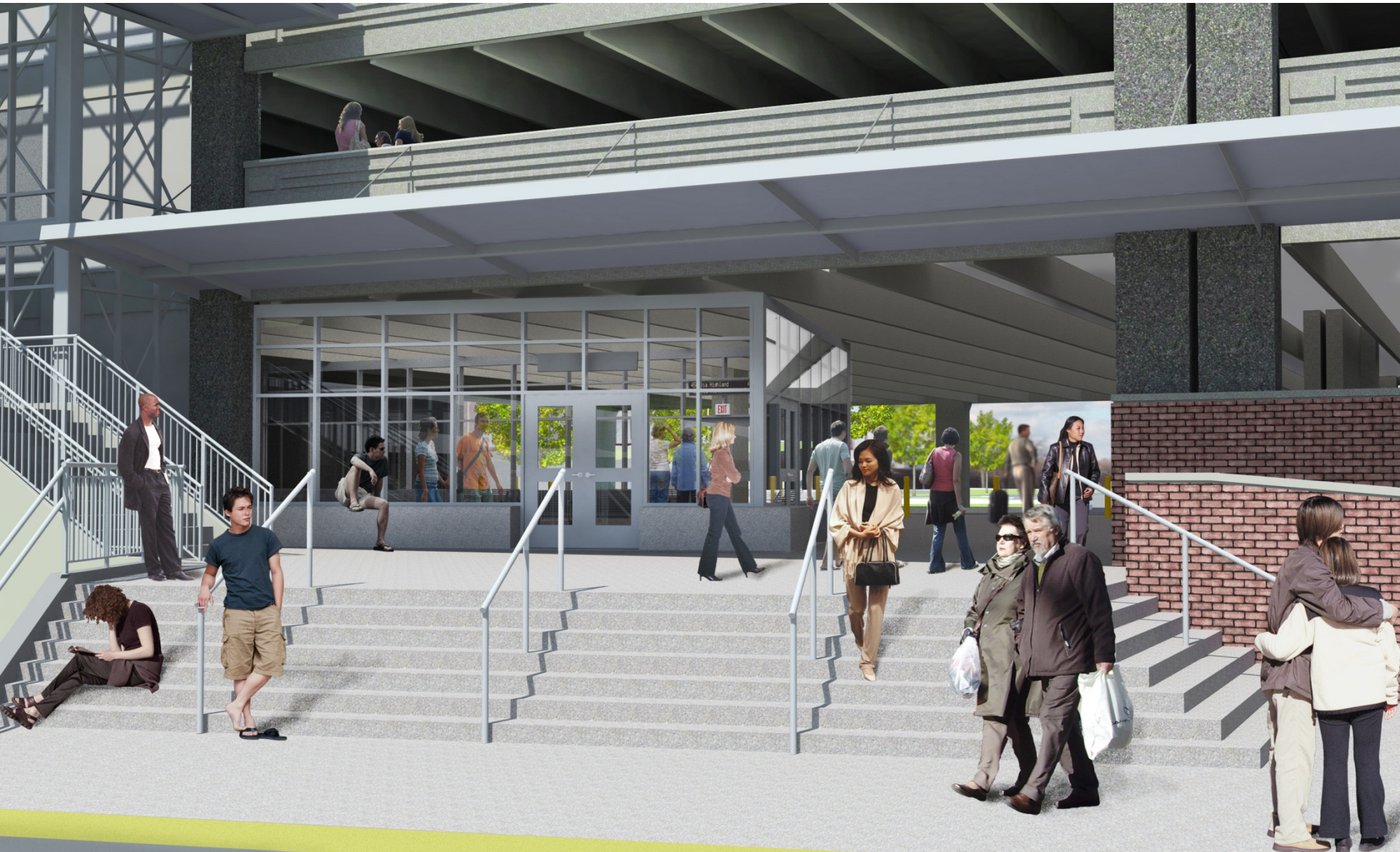
Enlarged plans - WAITING AREA















Looking ahead

- Next public meeting March 2013
 - 90% design
 - Phasing during construction
- Permitting continues this winter
- Challenges remain
 - Subsurface conditions
 - Temporary inconveniences during construction
- On-track for early-summer 2013 construction start