

SALEM INTERMODAL STATION

March 20, 2013
Public Meeting



PUBLIC PROCESS

- ✓ Purpose of Feb 16 discussion: *input on project function & features*
- ✓ Purpose of April 9 discussion: *input on building design strategies*
- ✓ Purpose of June 26 discussion: *input on suggested design proposal*
- ✓ Purpose of Nov 13 discussion: *input on proposed design refinements*
- Purpose of tonight's discussion: *input on phasing & design details*
- Next Public meeting: June 2013.



Status update



Permitting Progress:

- ✓ August 2012: MEPA EIR waiver granted
 - ✓ October 11, 2012: Chapter 91 public meeting
 - ✓ November 8, 2012: Chapter 91 public comment period closed
 - ✓ Winter 2012-13: Chapter 91 DEP review
 - Spring 2013: Chapter 91 license to be issued
-
- ✓ Winter 2012-13 Archeology fieldwork complete
 - ✓ Winter 2012-13: Salem Conservation Commission OOC
 - ✓ Winter 2012: MA Historic MOA
-
- Spring 2013: MA Historic compliance confirmation
 - Spring 2013: Building Permit

Construction Progress:

- ✓ November 9, 2012: Construction Manager selected
- ✓ Winter 2012-13: Construction phasing plan development
- ✓ Winter 2012-13: CM cost estimate development
- ✓ Winter 2013: Value engineering sessions complete
- ✓ March 2013: *Public meeting – construction phasing*

- Spring 2013: Preparation of alternative parking lot
- Early summer 2013: New temporary traffic patterns in effect
- Early summer 2013: Construction start
- Fall 2014: Substantial completion, garage & station open
- Winter 2014-15: Final completion, project complete

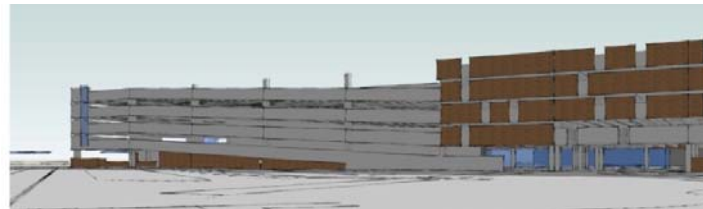
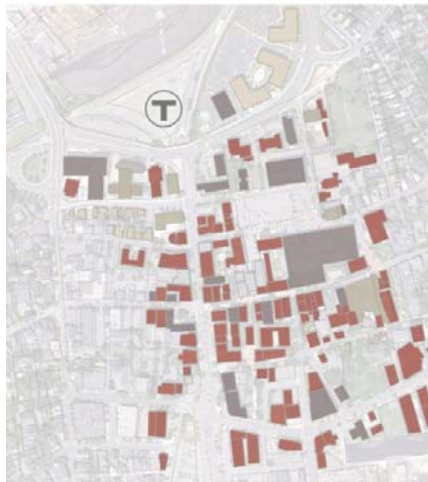
Design refinements



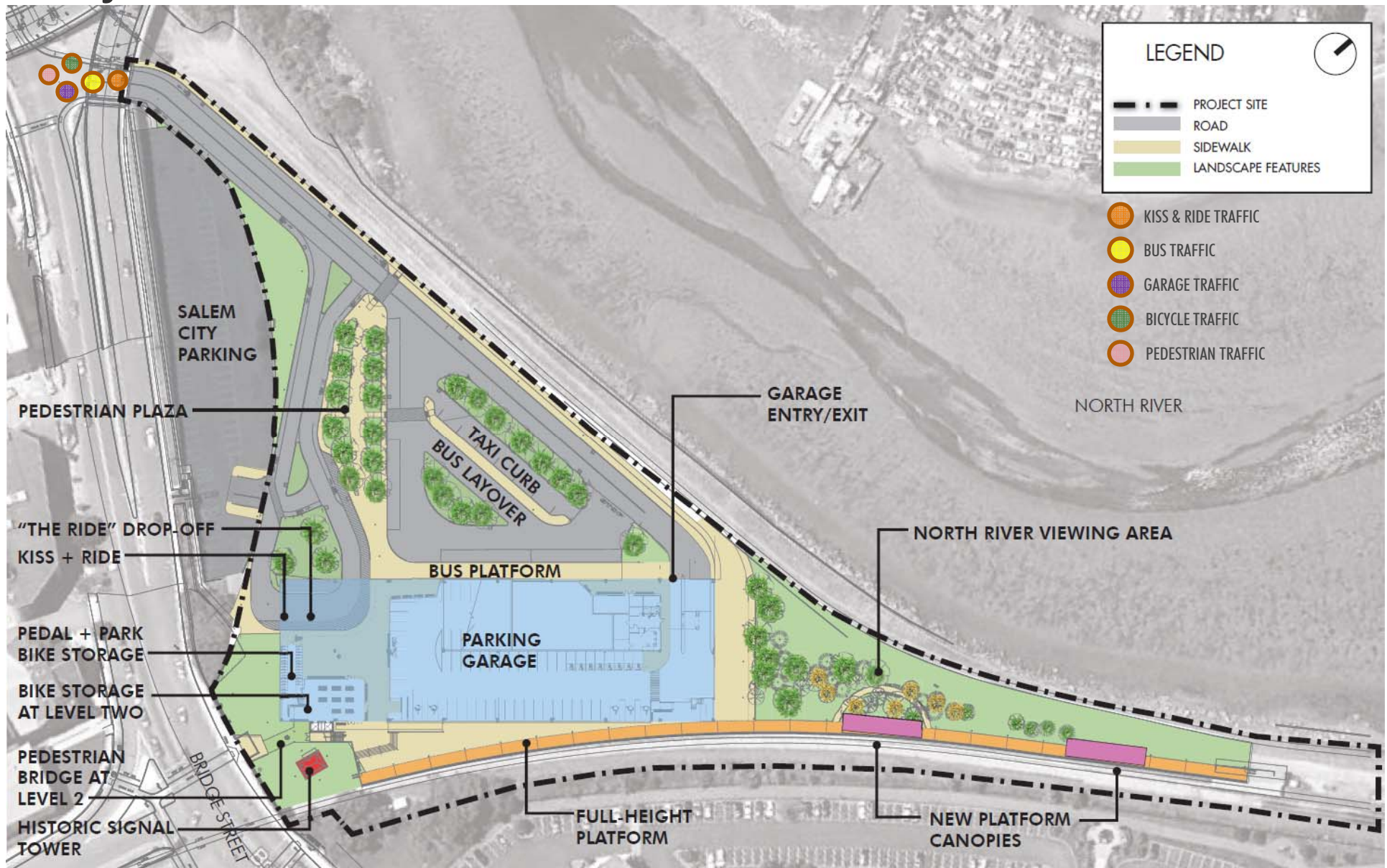
Design Progress:

- ✓ Fall/Winter 2011: Subsurface investigations
- ✓ Feb 16, 2012: Initial public meeting - planning
- ✓ April 9, 2012: Second public meeting – design strategies
- ✓ June 26, 2012: Third public meeting – 30% design
- ✓ November 2012: Fourth public meeting – 60% design

- March 2013: Fifth public meeting – 75% project / 90% design
- Late Spring 2013: 100% design, construction begins

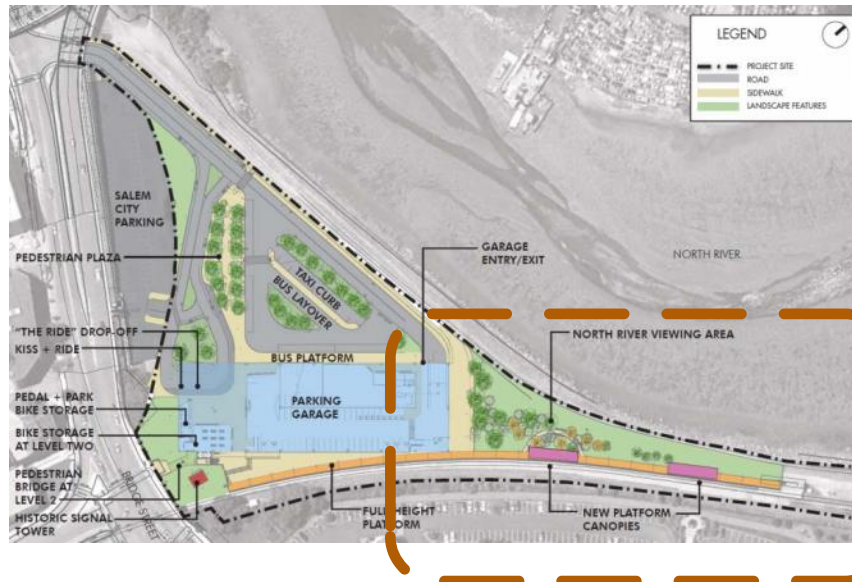


Project overview

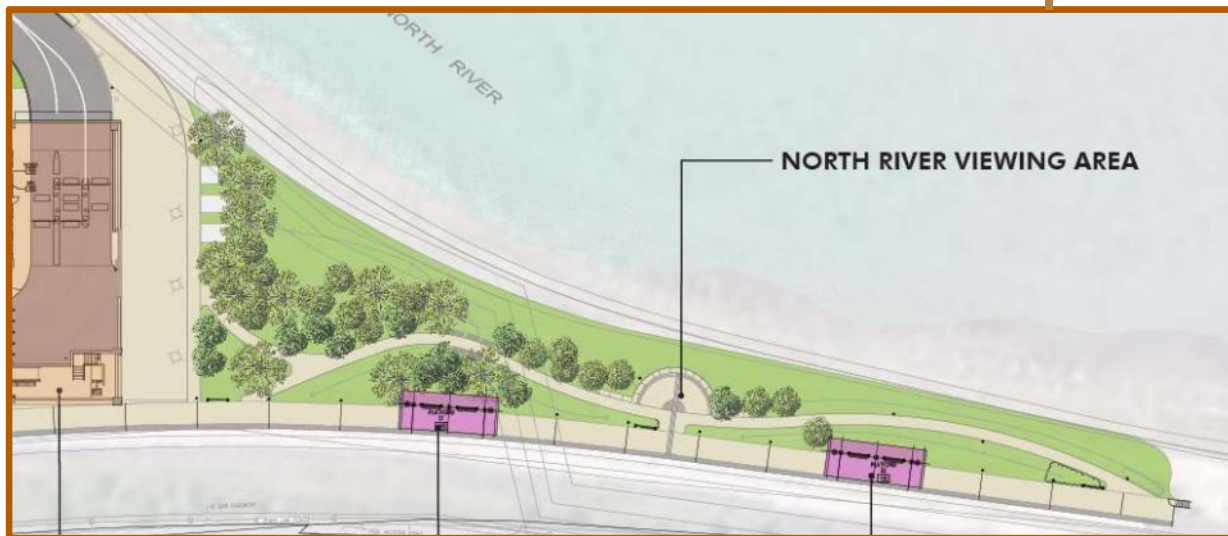


Site plan – PRIMARY FUNCTIONAL ELEMENTS

Landscape: North River viewing area

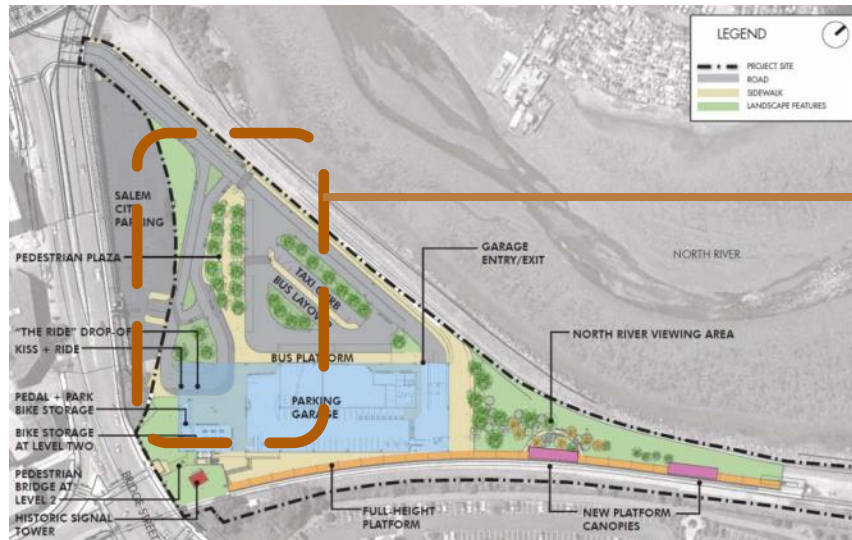


- Planted windscreen
- Use of granite blocks
- Dedicated path
- Lighting for safety



Site plan – KEY PEDESTRIAN LANDSCAPE ELEMENTS

Landscape: Pedestrian entry plaza



- Focal point for wayfinding
- Use of granite blocks
- Strong plantings to offset pavement
- Lighting for safety
- Feeds bus, drop-off, taxi zones

Site plan – KEY PEDESTRIAN LANDSCAPE ELEMENTS

Lighting design - **understanding**

Objective: safety with respect to context.

Considerations:

- Personal safety
- Effect to neighbors
- Effect to broader community /sense of place

Requirements:

- MBTA standards
- Industry standards
- State building and energy codes
- Sustainable design / 'green' initiatives

Lighting design - approach

Primary zones:

Platform

Garage roof

Site driveways/bikeways

Site walkways

Garage interior

Pedestrian entrances, bridges

Stairs, elevators, lobbies



Lighting design - approach

Primary zones:	Relative levels
Platform	+
Garage roof	-
Site driveways/bikeways	0
Site walkways	+
Garage interior	0
Pedestrian entrances, bridges	0
Stairs, elevators, lobbies	++

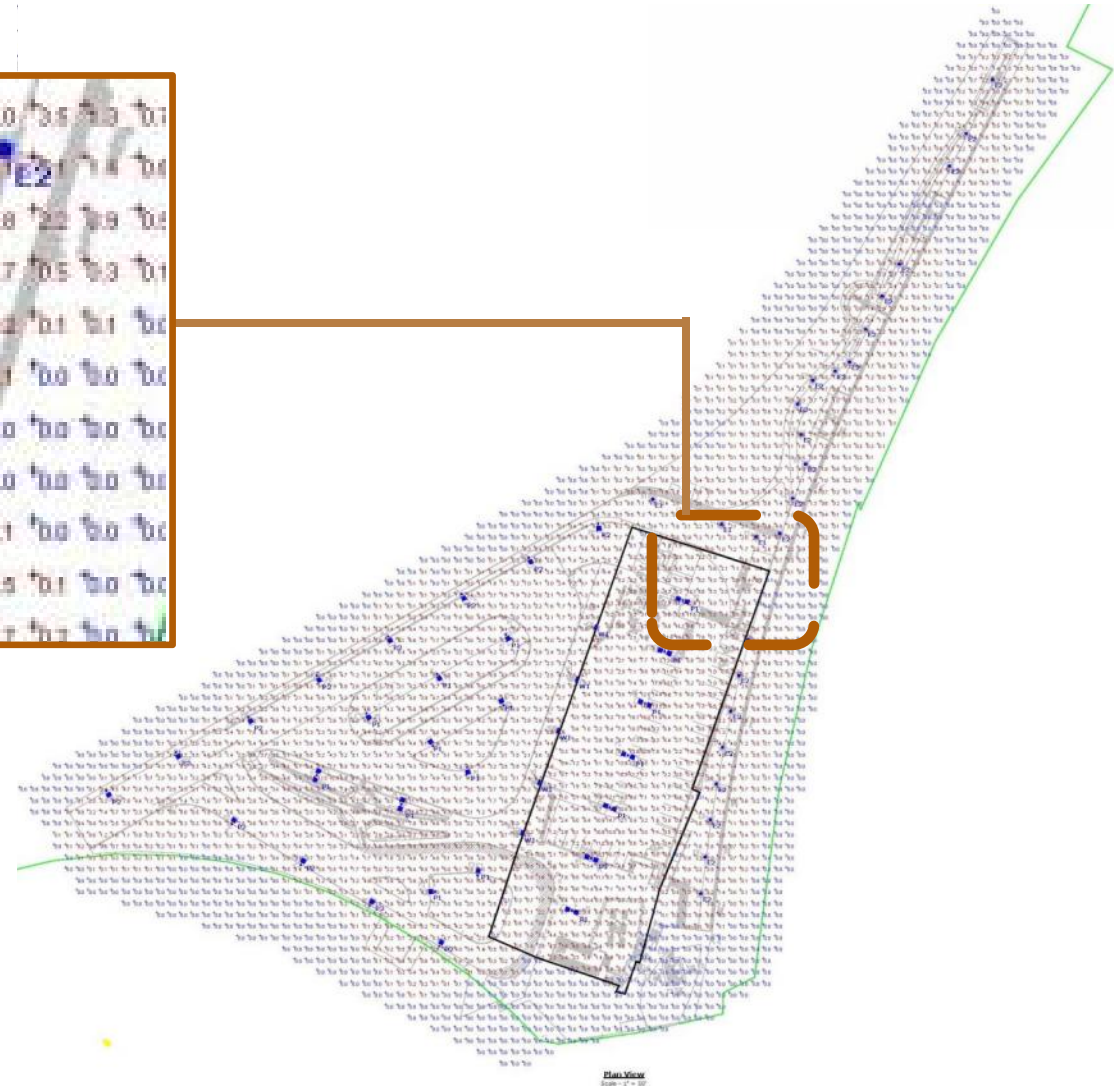
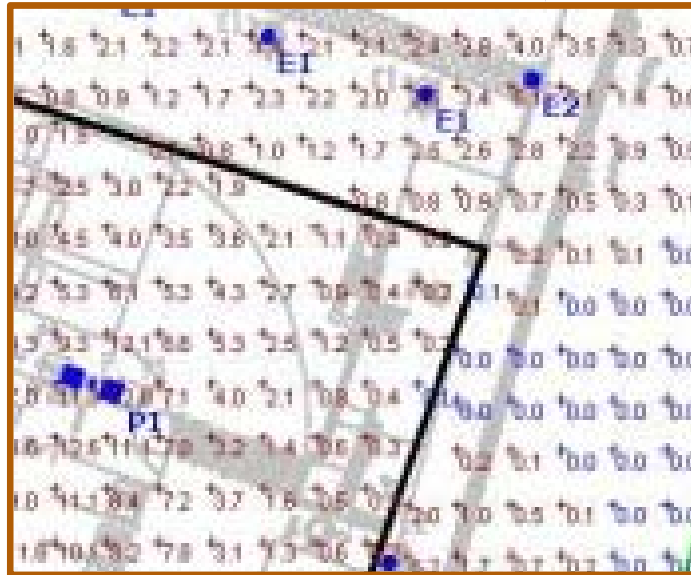


Lighting design - approach

recommended levels

Primary zones:	Relative levels	mbta	industry	dark skies	LEED
Platform	+				
Garage roof	-				
Site driveways/bikeways	0				
Site walkways	+				
Garage interior	0				
Pedestrian entrances, bridges	0				
Stairs, elevators, lobbies	++				

Lighting design - approach



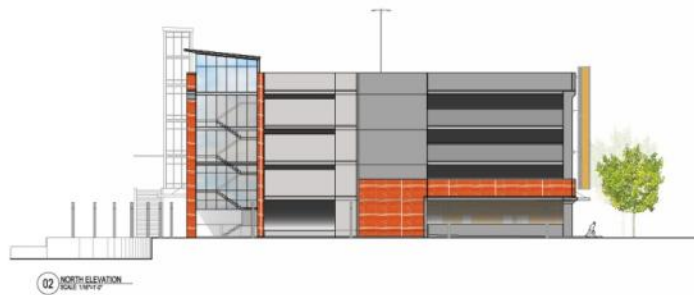
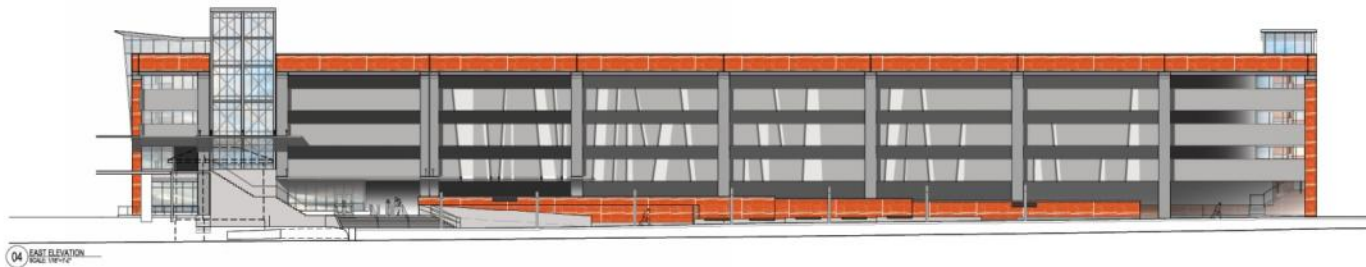
Fixture selection:

- Type
- Output
- Height
- Distance
- Configuration

FOR EXAMPLE PURPOSES ONLY – NOT A PROPOSAL FOR SOLUTION

Elevation treatment

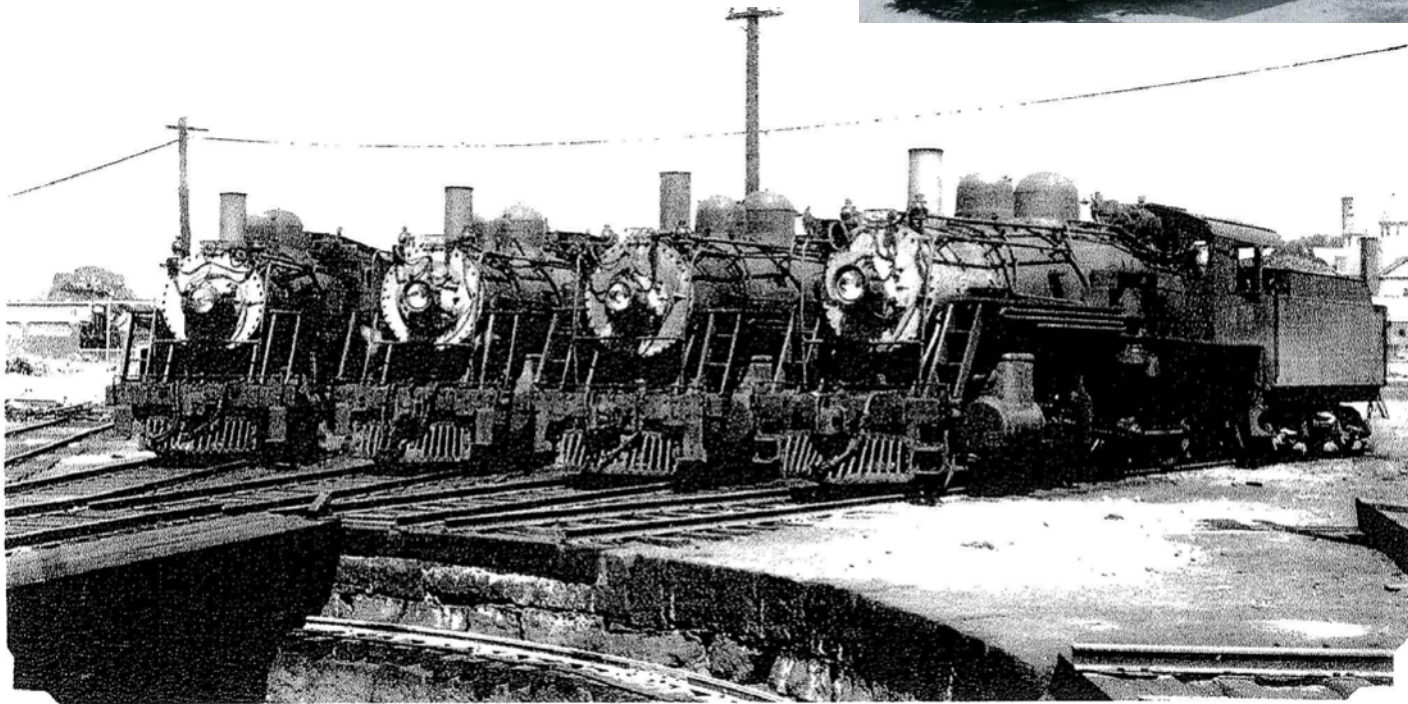






Elevation treatment

Boston & Maine Railroad
Locomotive 1455, Salem MA



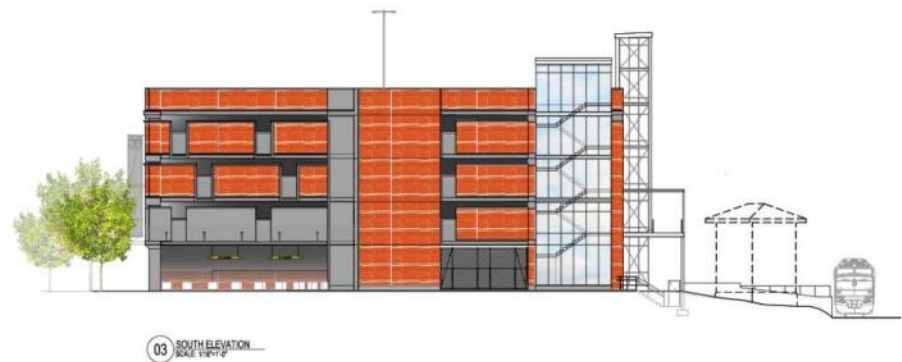
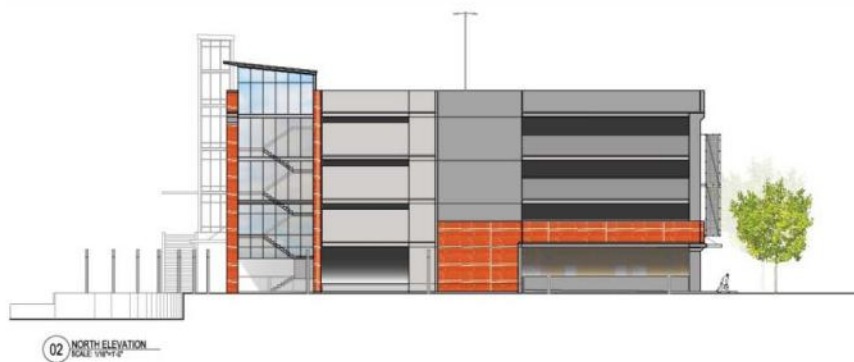
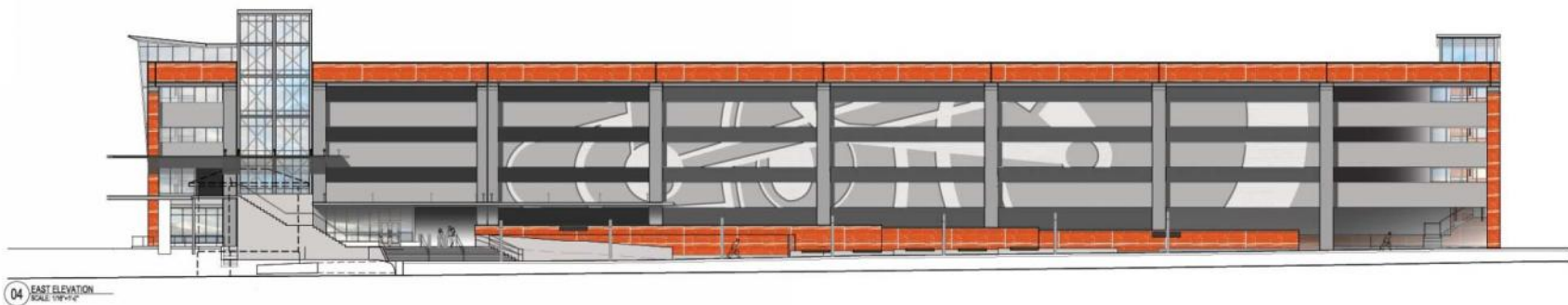
BHS
A. HALE

L To R 1431-1368 1455-1478
(TURN TABLE IN FOREGROUND)

CA - 1940'S
SALEM JAIL AT FAR RIGHT

Elevation treatment







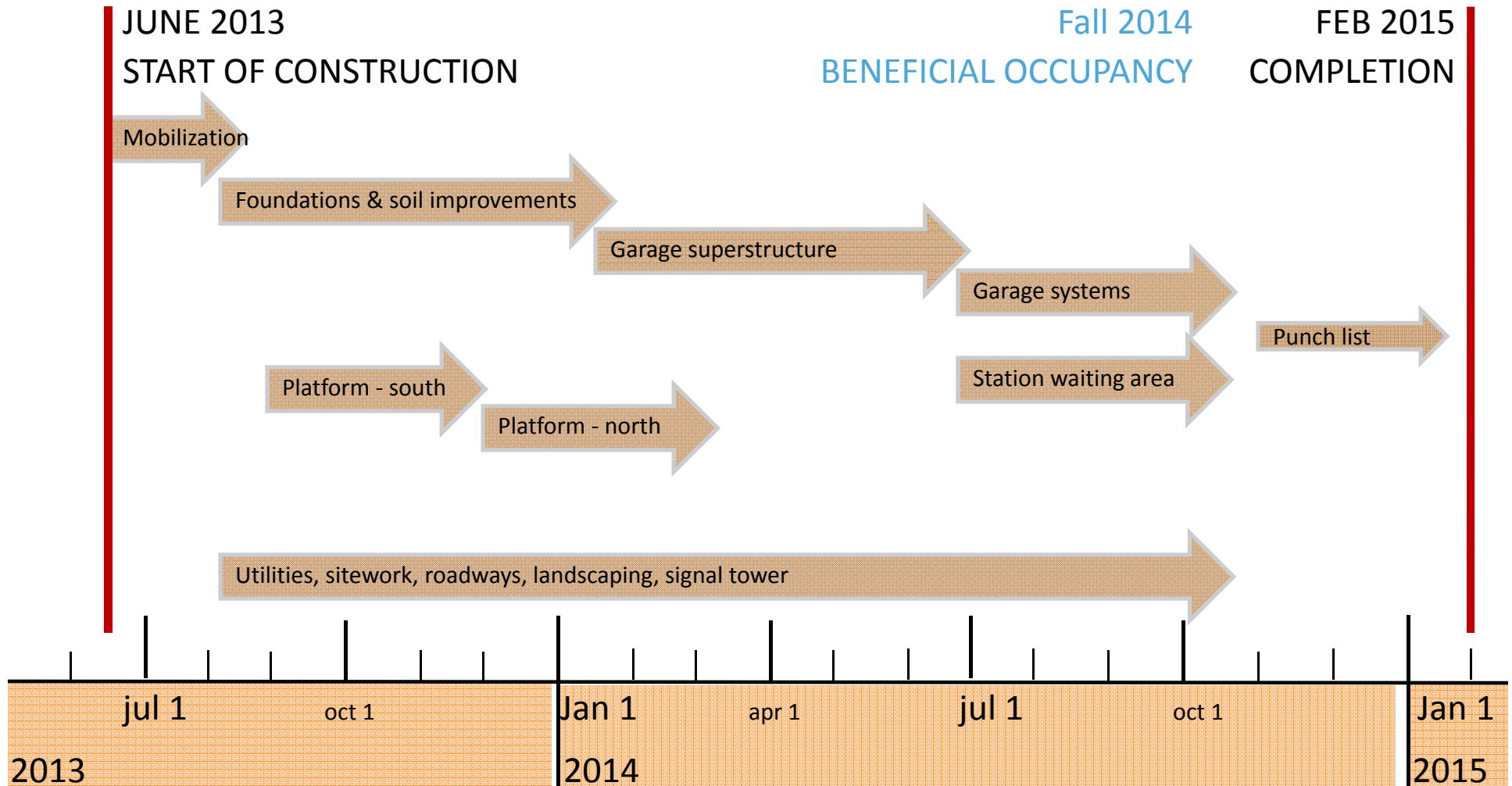
FENNICK | McCREDIE
architects llc



Construction schedule and phasing



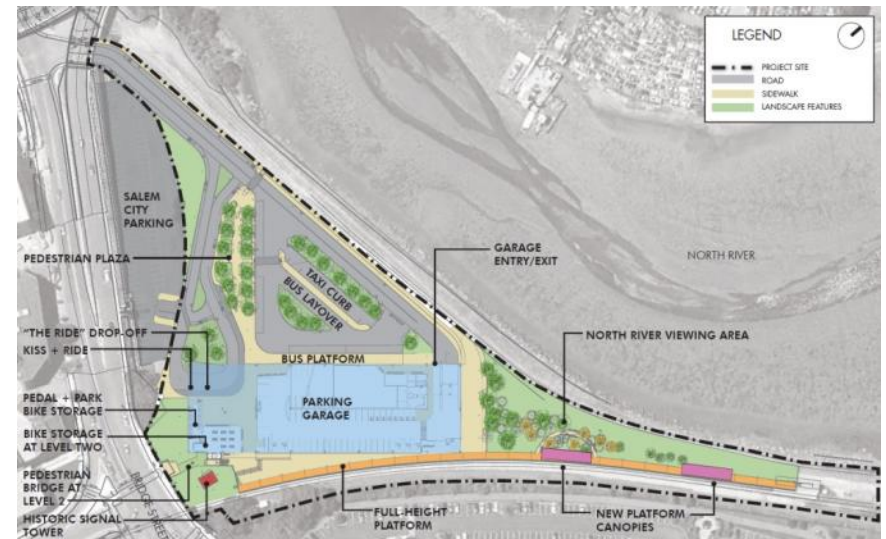
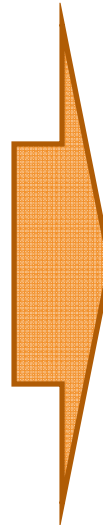
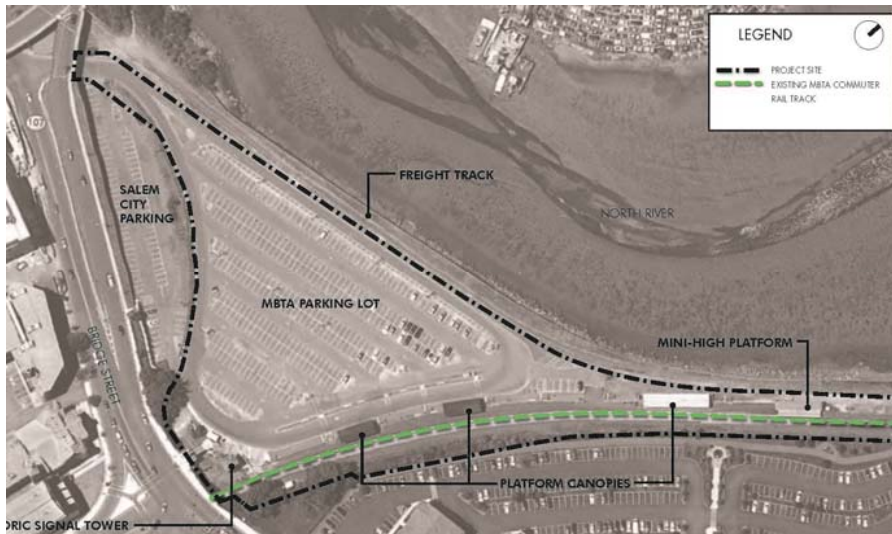
Preliminary schedule



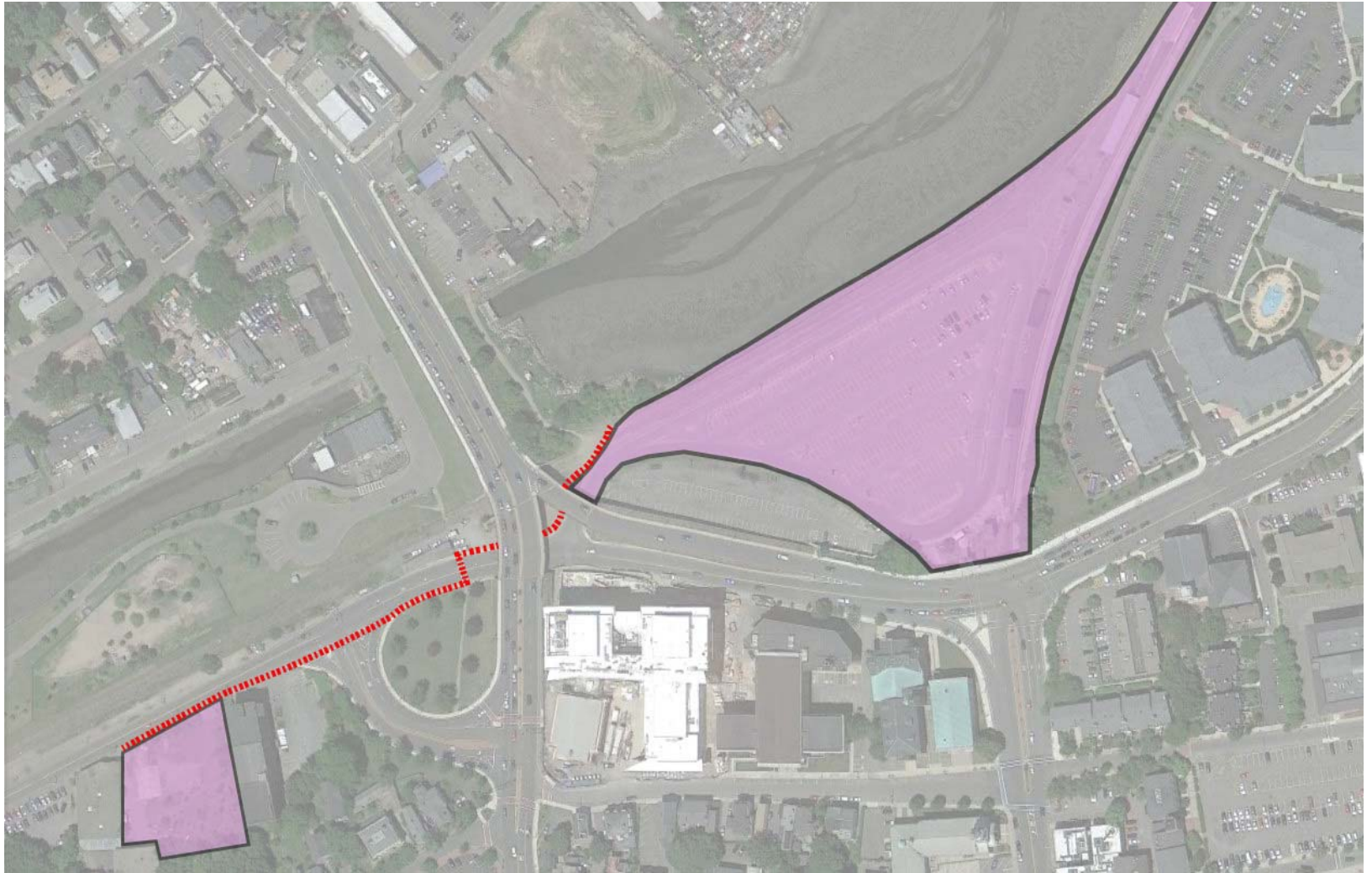
Construction Schedule and Phasing

Priorities:

- Safety
- Keep station open / maintain functionality of modes
- Minimize number of phase changes effecting public
- Cost & Schedule



Remote parking



Approach: safely maintain services

Services to remain on-site during construction:

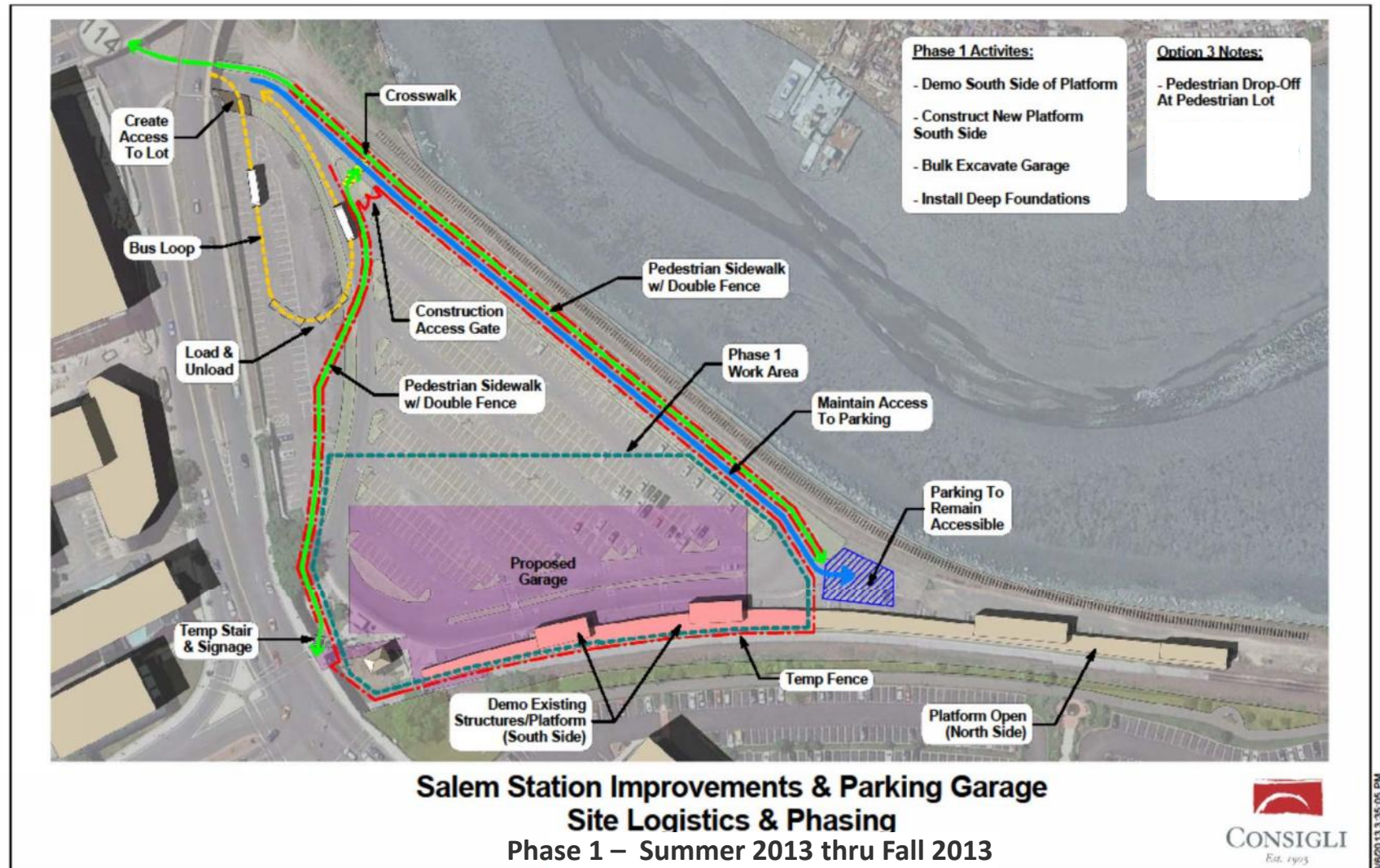
- Passenger Rail
- Buses
- HP parking, HP pickup/drop-off
- The RIDE pickup/drop-off
- (2) Pedestrian access points at Bridge and Washington
- (1) Bicycle access point at Bridge

Services to be relocated off-site during construction:

- Automobile parking
- Automobile pickup/drop-off
- Taxi stand

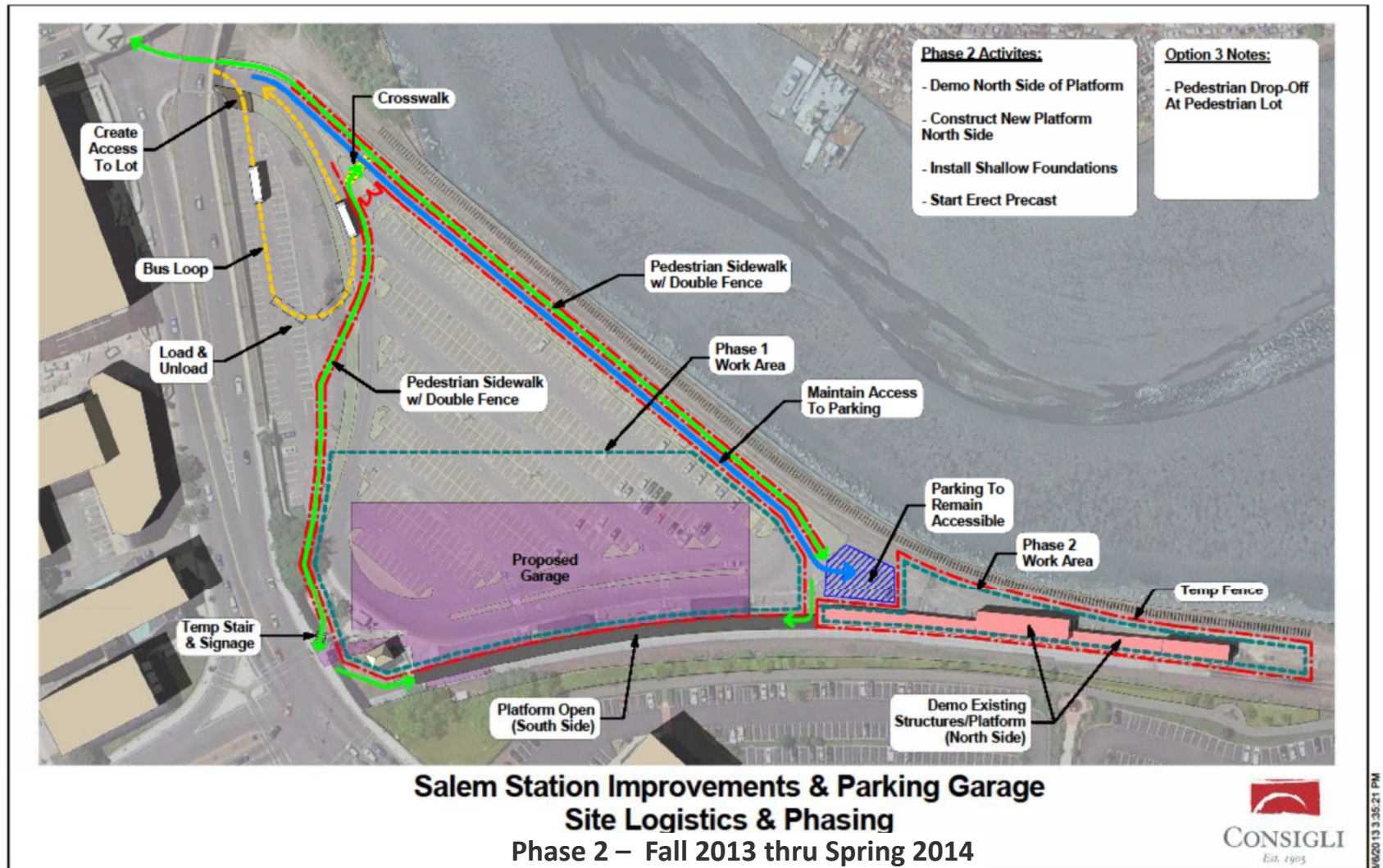
Construction phasing plans provided by Consigli Construction

Construction phasing:



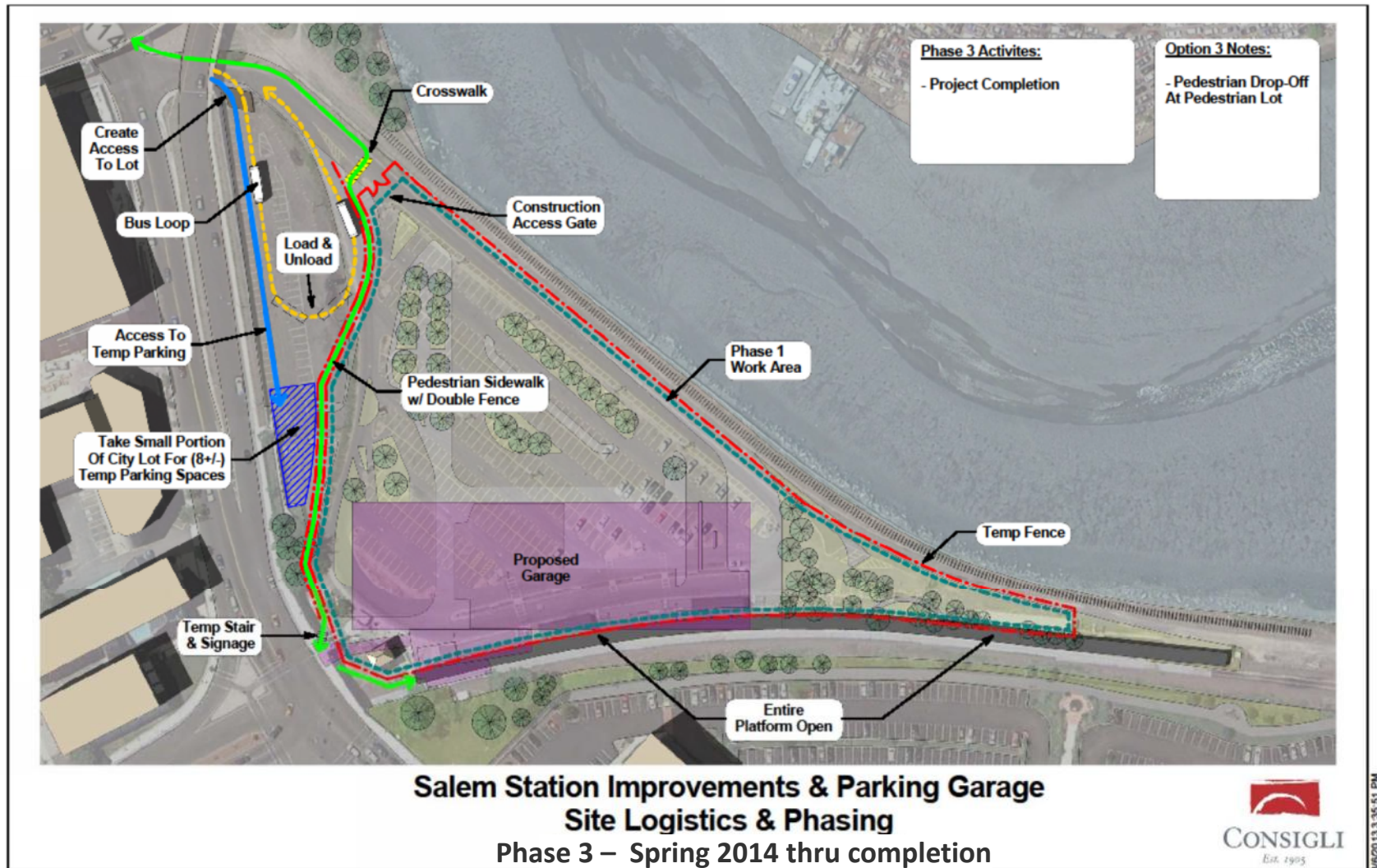
Construction phasing plans provided by Consigli Construction

Construction phasing:



Construction phasing plans provided by Consigli Construction

Construction phasing:



Construction phasing plans provided by Consigli Construction

SALEM INTERMODAL STATION

March 20, 2013
Public Meeting

