

SALEM INTERMODAL STATION

APRIL 9, 2012 PRESENTATION

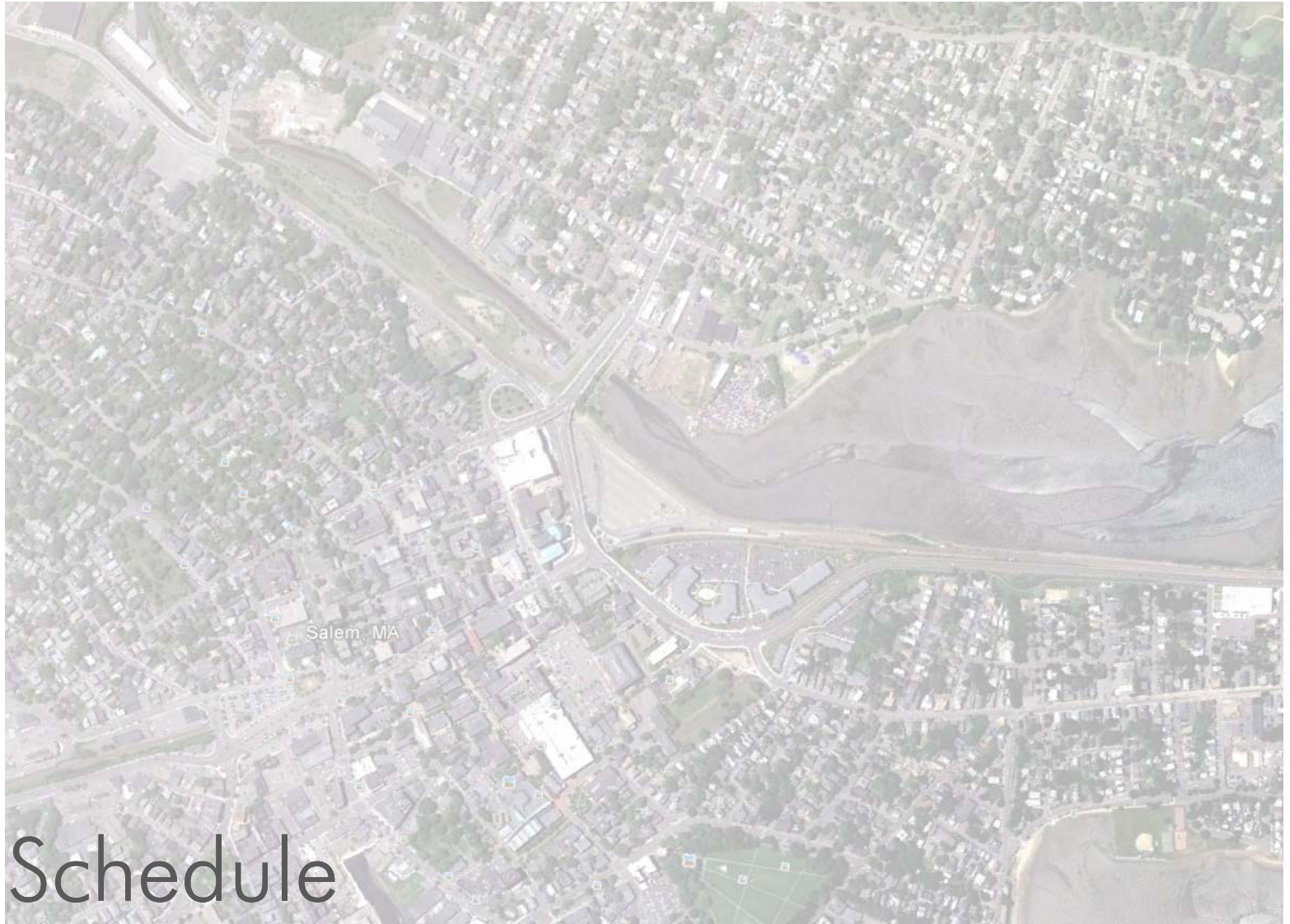


DESIGN PRESENTATION

- ✓ Purpose of Feb 16 discussion: *input on project function & features*
- Purpose of April 9 discussion: *input on building design strategies*
- Purpose of June discussion: *input on building & site specifics*

April 9, 2012 discussion topics:

- Project Overview – schedule, function, features
- Approach to building design strategies
- Building design strategy options



Schedule



DESIGN:

- ✓ Fall/Winter 2011: Subsurface investigations, initial functional planning
- ✓ Feb 16, 2012: Initial public meeting - planning
- April 9, 2012: Second public meeting – design strategies
- June 2012: Third public meeting – 30% design
- Summer 2012: Final design

PERMITTING:

- Summer 2012: State MEPA filing & comment
- Fall 2012: State Chapter 91 filing & comment
- Fall 2012: Local/City permitting process

CONSTRUCTION:

- Spring 2012: Limited archeology work on-site
- Spring/summer 2013: Primary construction start
- Fall 2014: Substantial completion, garage/station open
- Winter 2014: Final completion, project complete



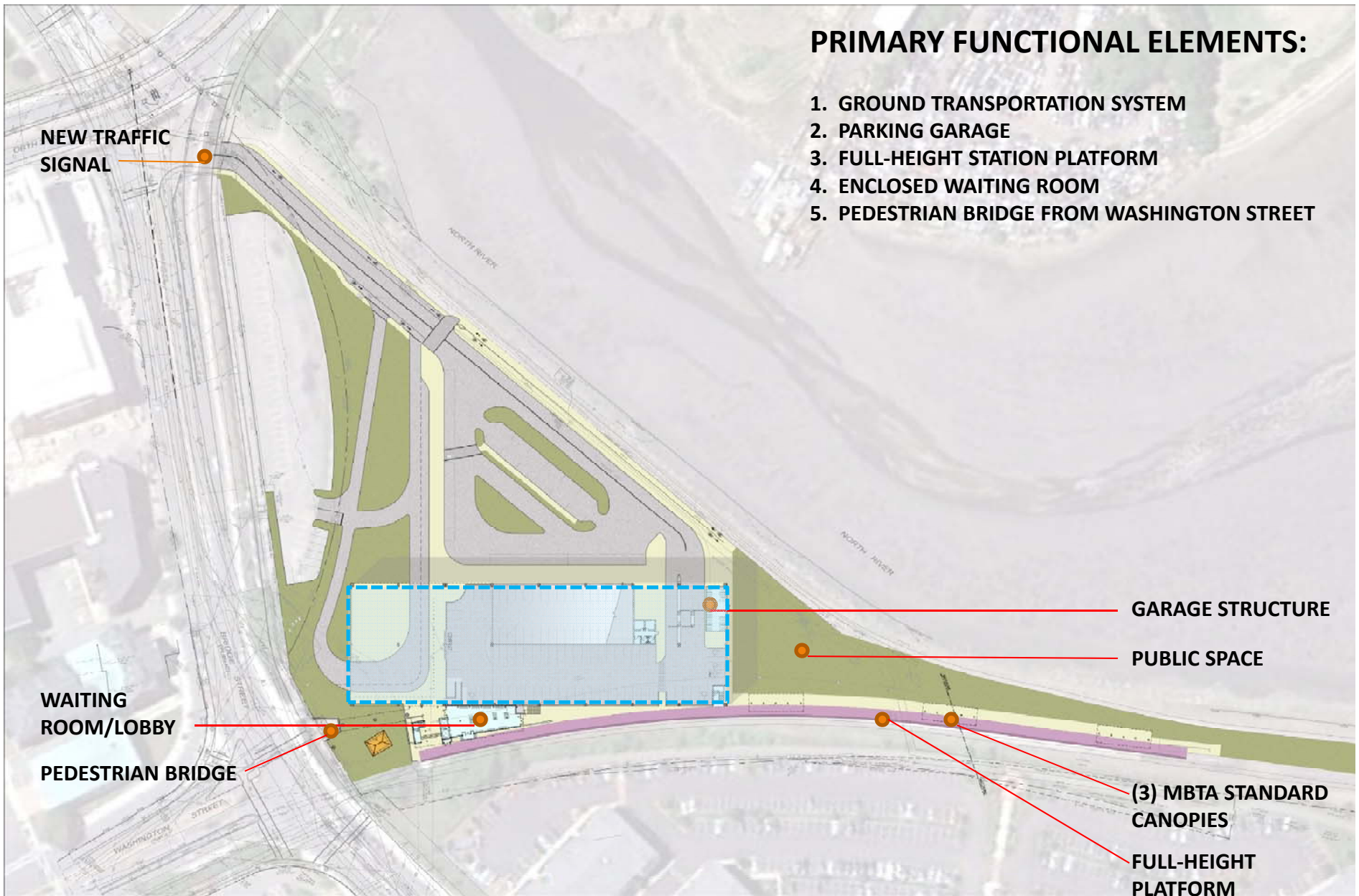
Function & features

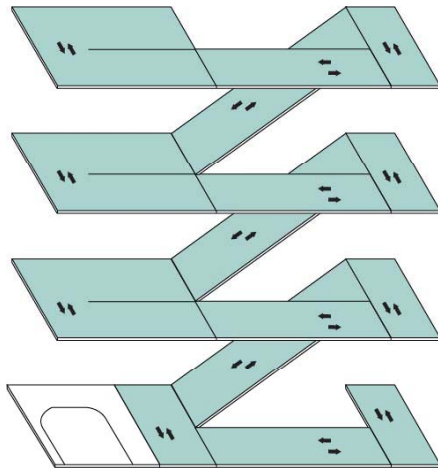




PRIMARY FUNCTIONAL ELEMENTS:

1. GROUND TRANSPORTATION SYSTEM
2. PARKING GARAGE
3. FULL-HEIGHT STATION PLATFORM
4. ENCLOSED WAITING ROOM
5. PEDESTRIAN BRIDGE FROM WASHINGTON STREET

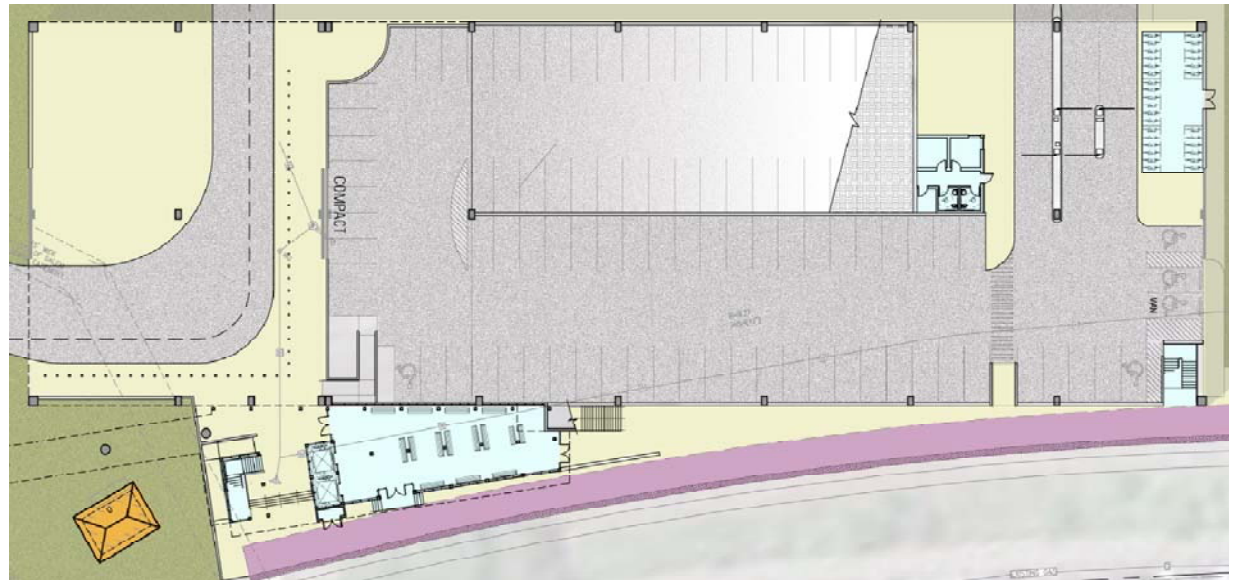




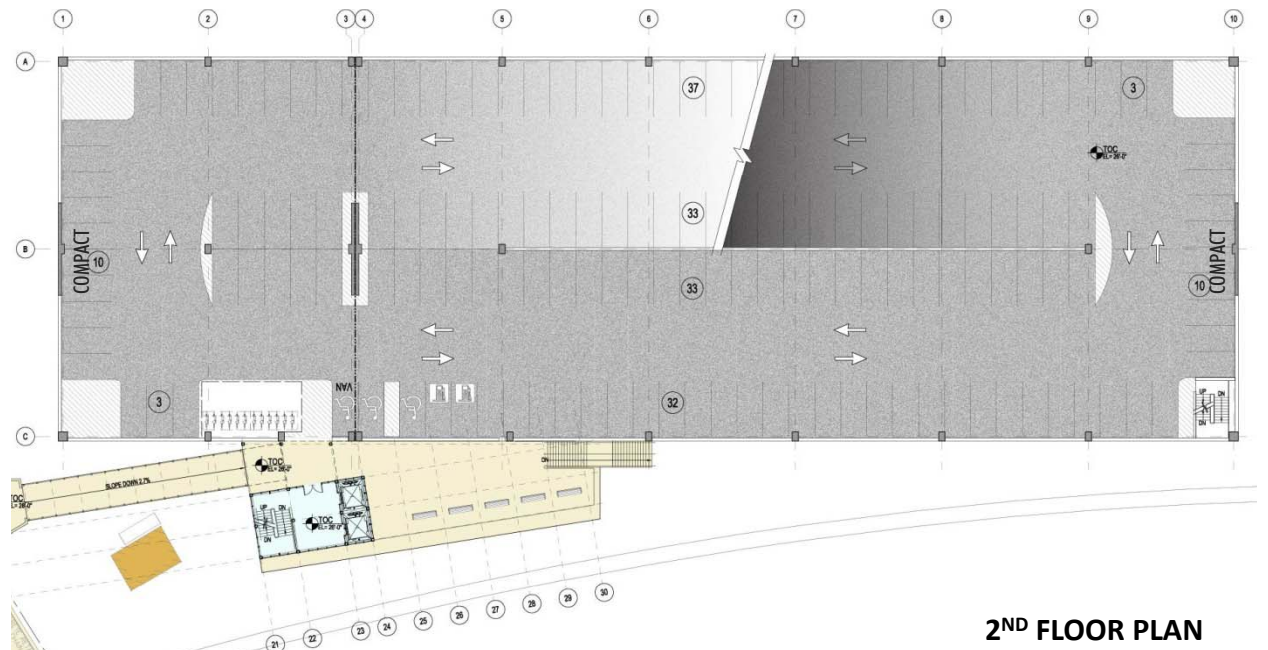
CIRCULATION DIAGRAM

CAR COUNT TABLE

LEVEL	CARS	TOTAL
G	109	109
2ND	161	270
3RD	164	434
4TH	116	550

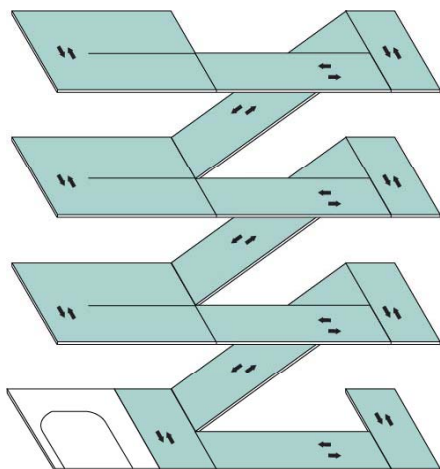


GROUND FLOOR PLAN



2ND FLOOR PLAN

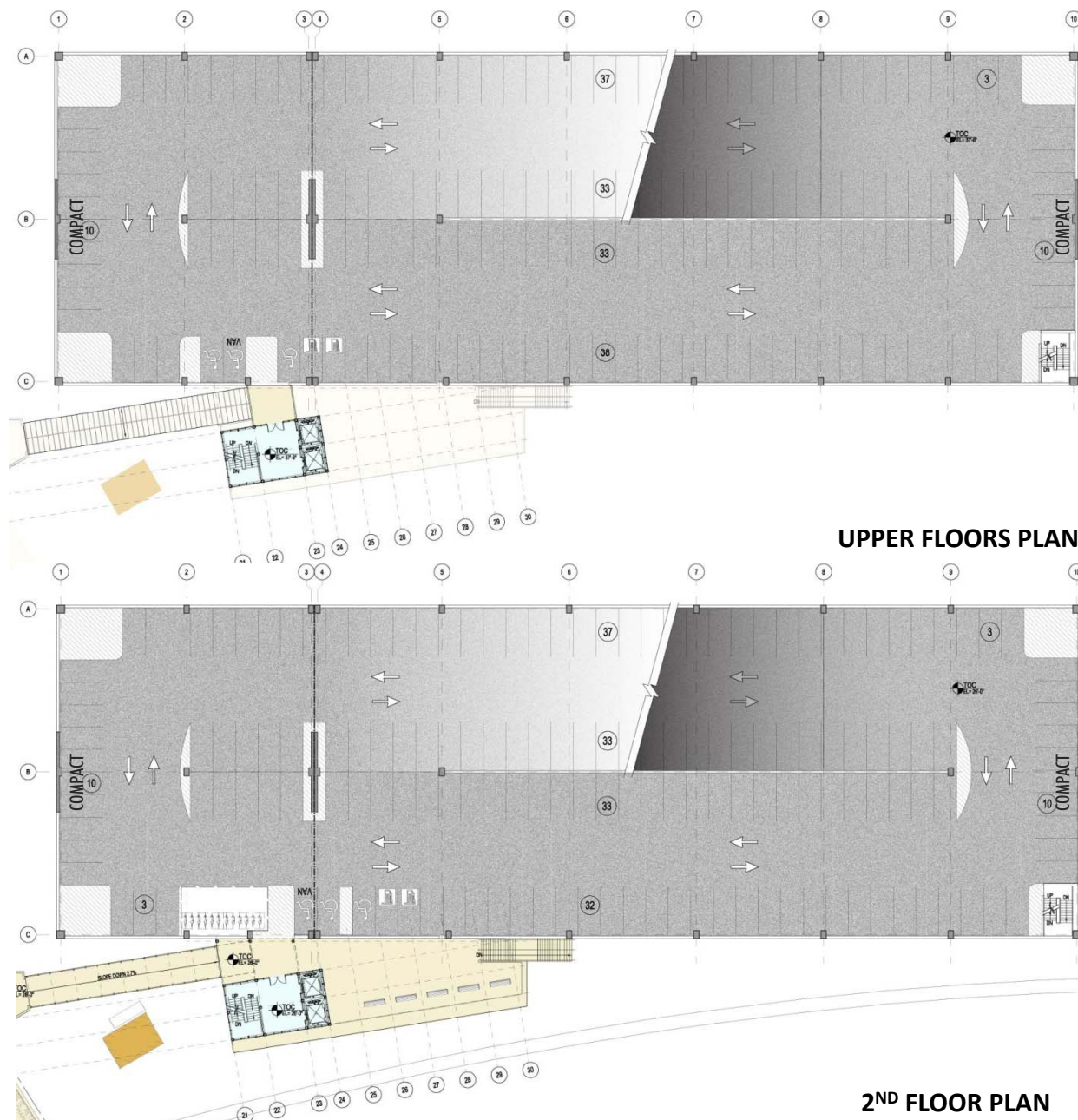




CIRCULATION DIAGRAM

CAR COUNT TABLE

LEVEL	CARS	TOTAL
G	109	109
2ND	161	270
3RD	164	434
4TH	116	550

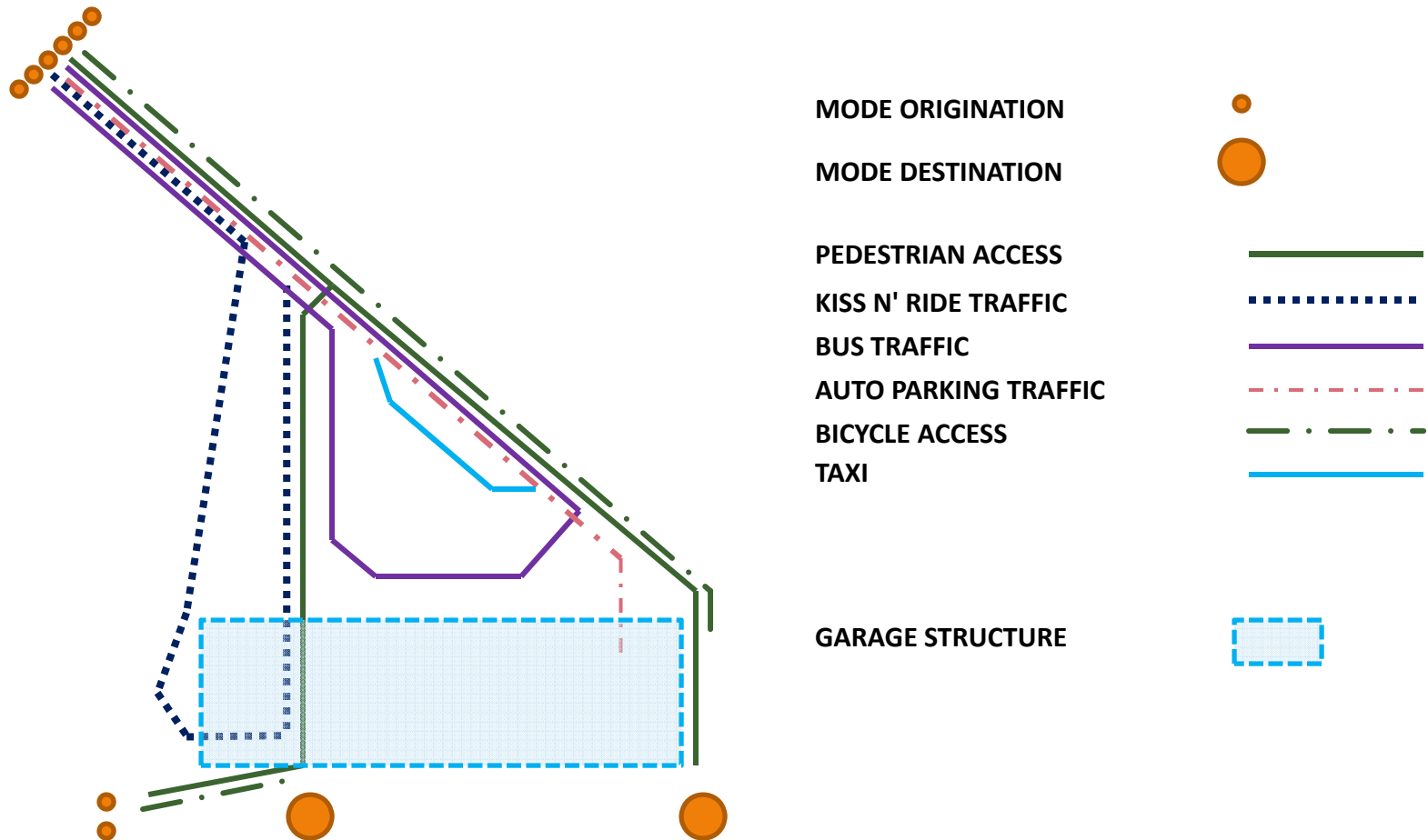


UPPER FLOORS PLAN

2ND FLOOR PLAN



GROUND TRANSPORTATION DIAGRAM:



PRIMARY FUNCTIONAL ELEMENTS:

1. GROUND TRANSPORTATION SYSTEM
2. PARKING GARAGE
3. FULL-HEIGHT STATION PLATFORM
4. ENCLOSED WAITING ROOM
5. PEDESTRIAN BRIDGE FROM WASHINGTON STREET

PEDESTRIAN ACCESS

KISS N' RIDE TRAFFIC

BUS TRAFFIC

AUTO PARKING TRAFFIC

BICYCLE ACCESS

TAXI

BICYCLE STORAGE

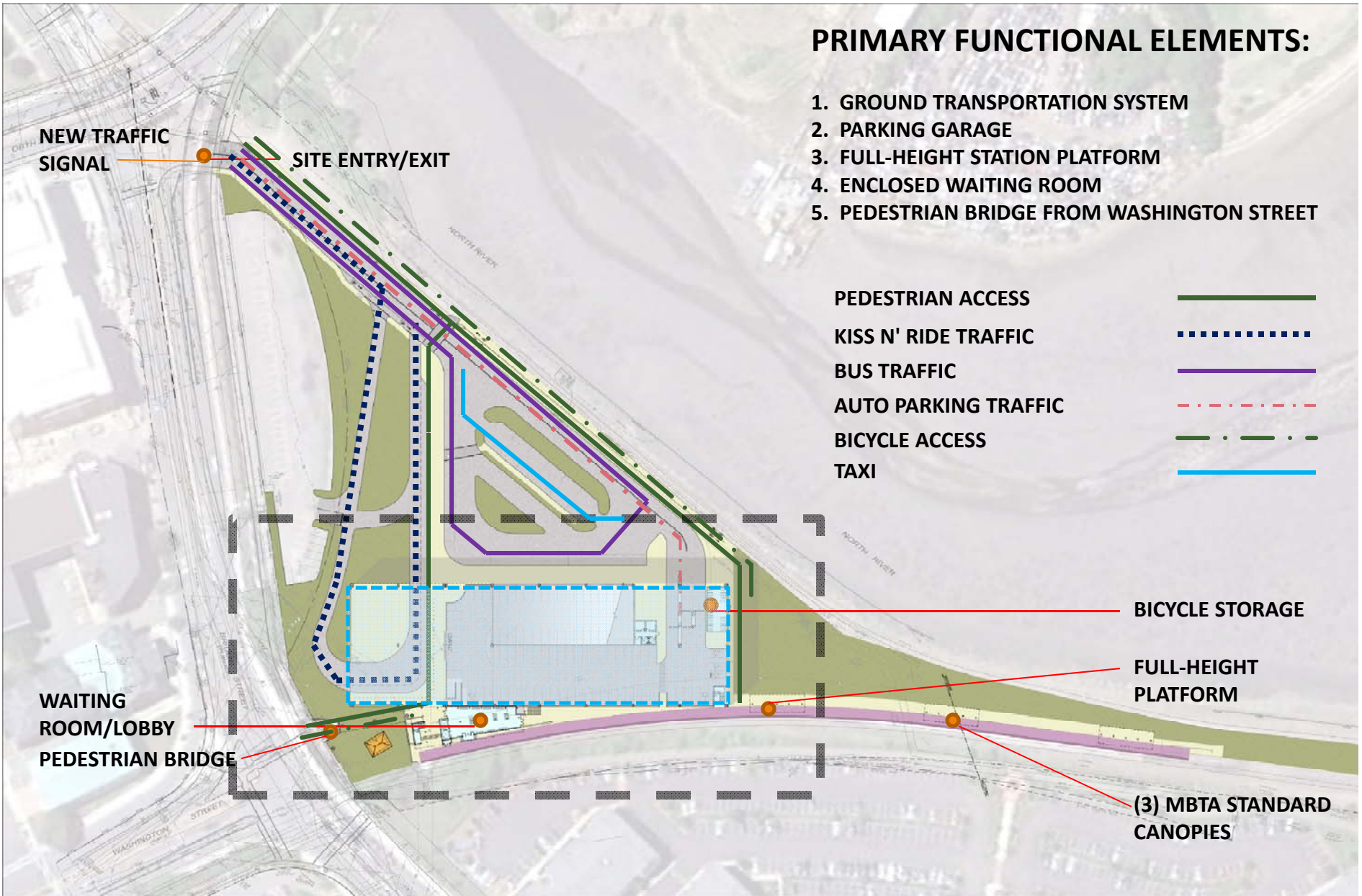
FULL-HEIGHT
PLATFORM

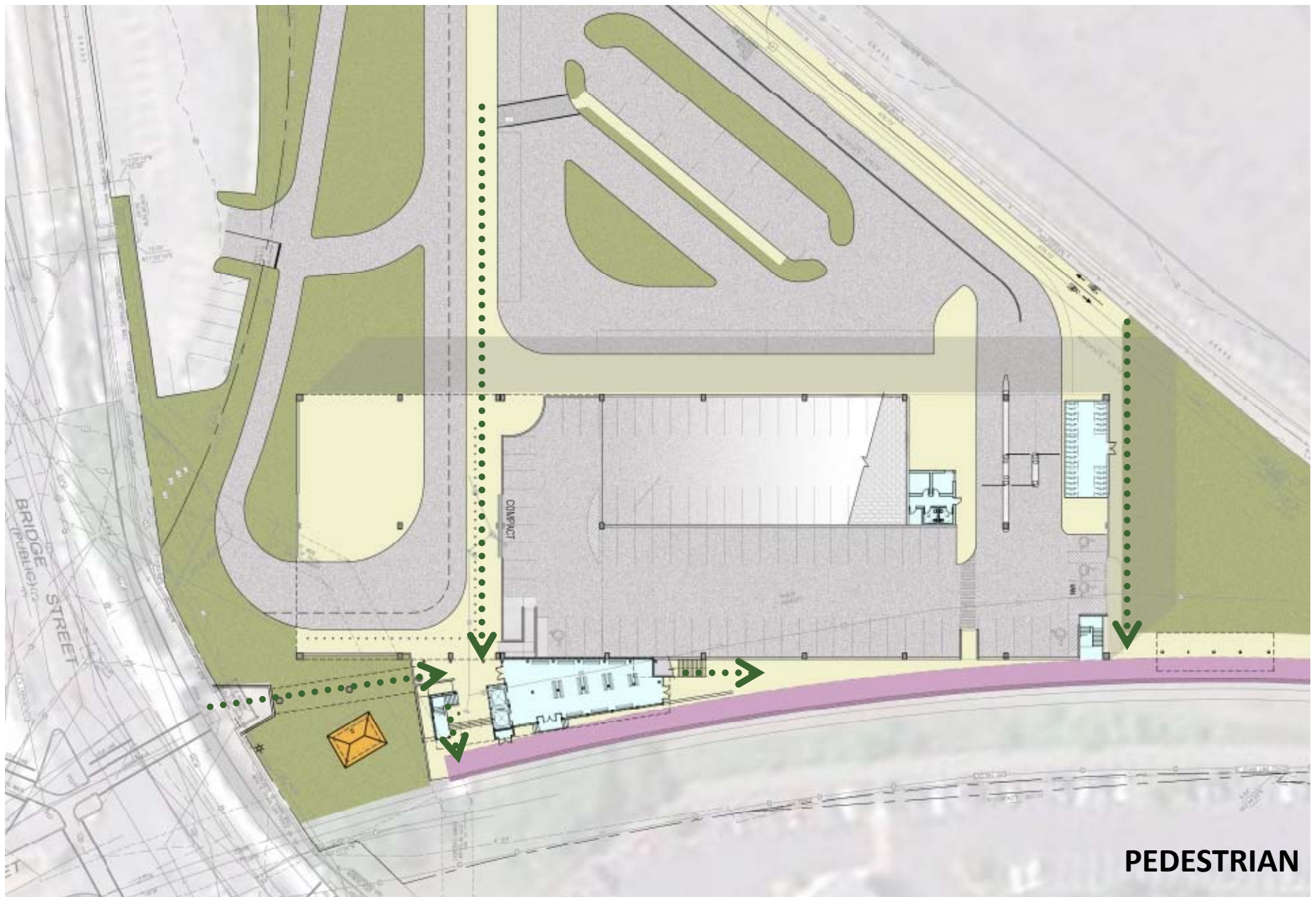
(3) MBTA STANDARD
CANOPIES

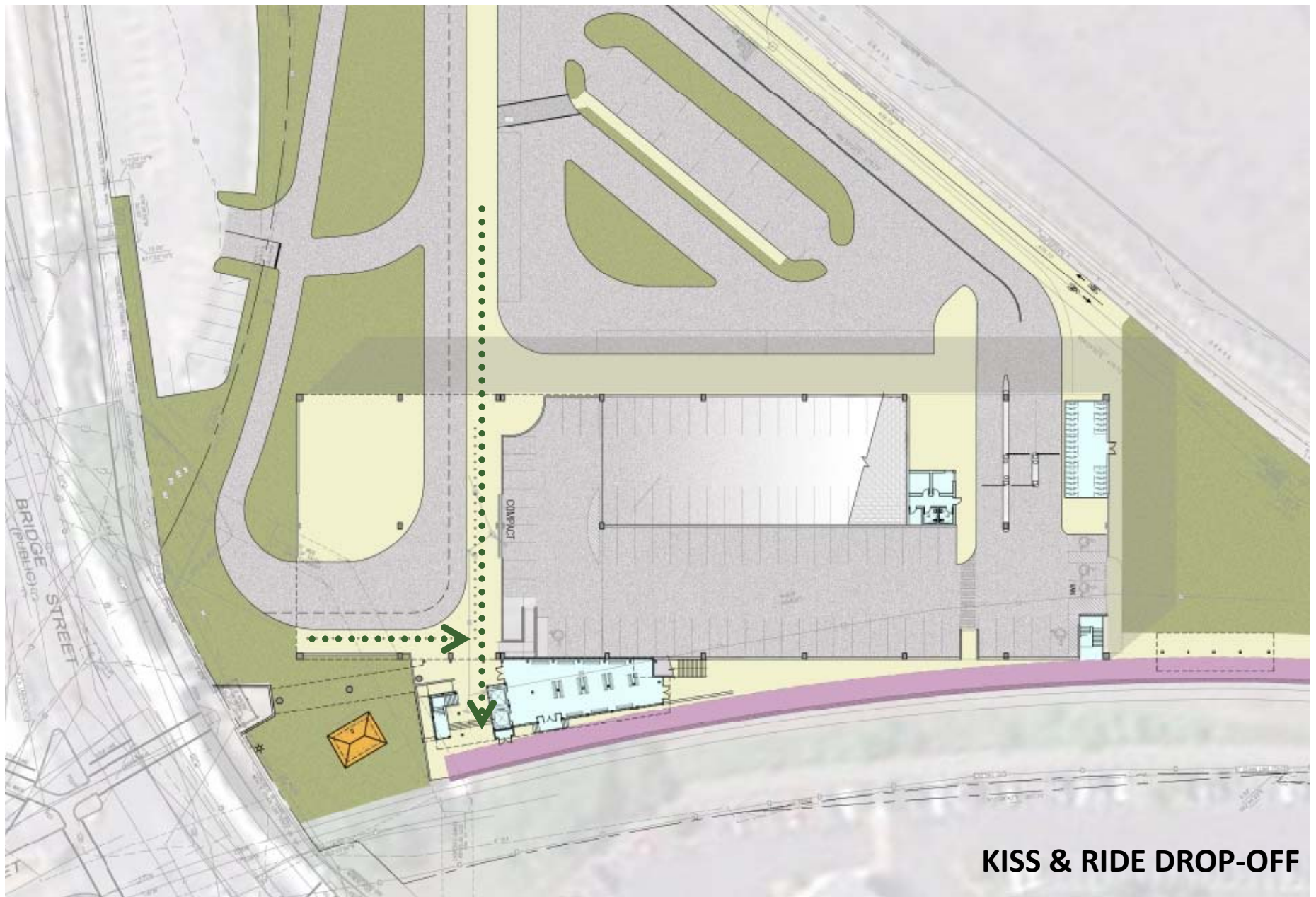
NEW TRAFFIC
SIGNAL

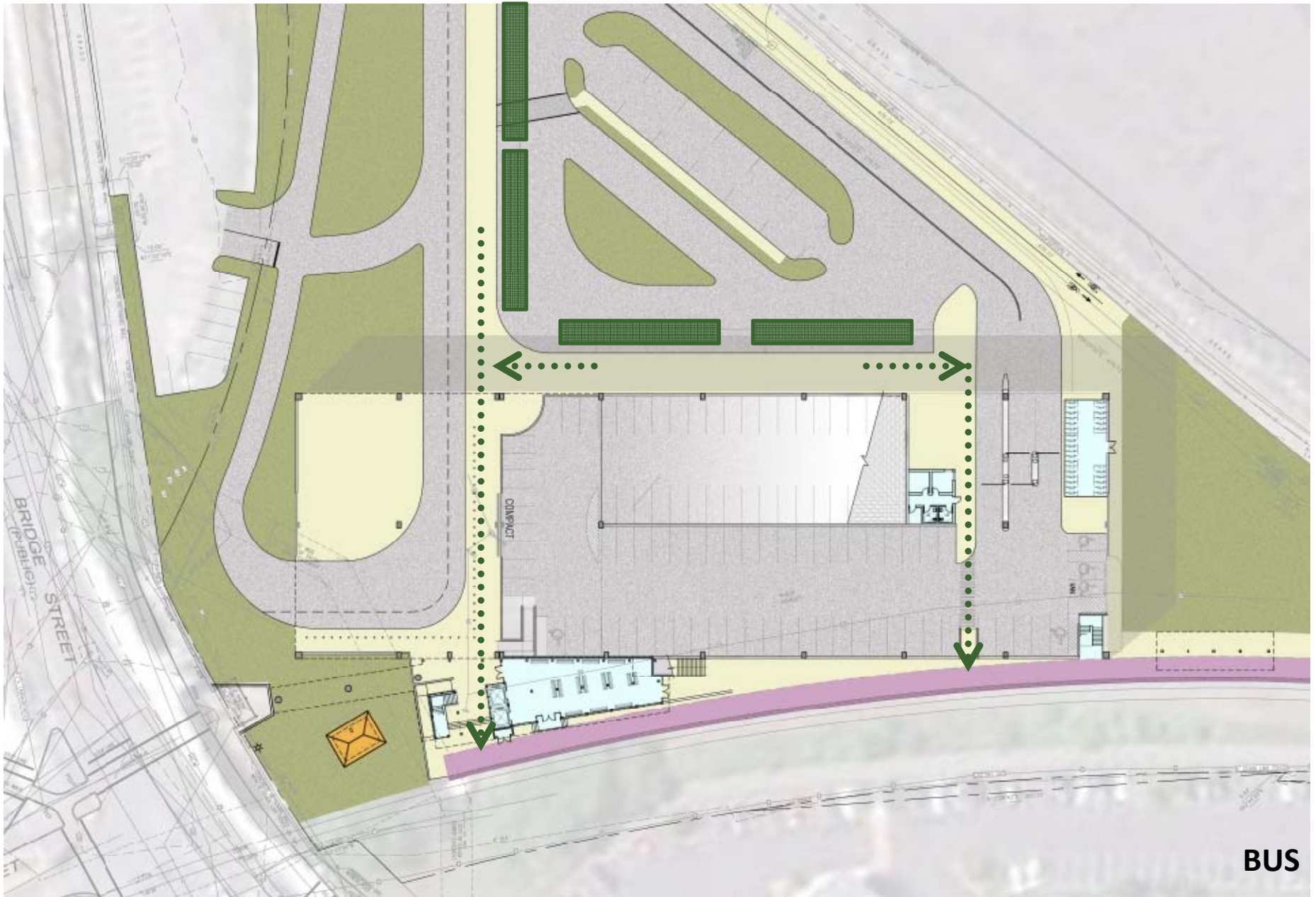
SITE ENTRY/EXIT

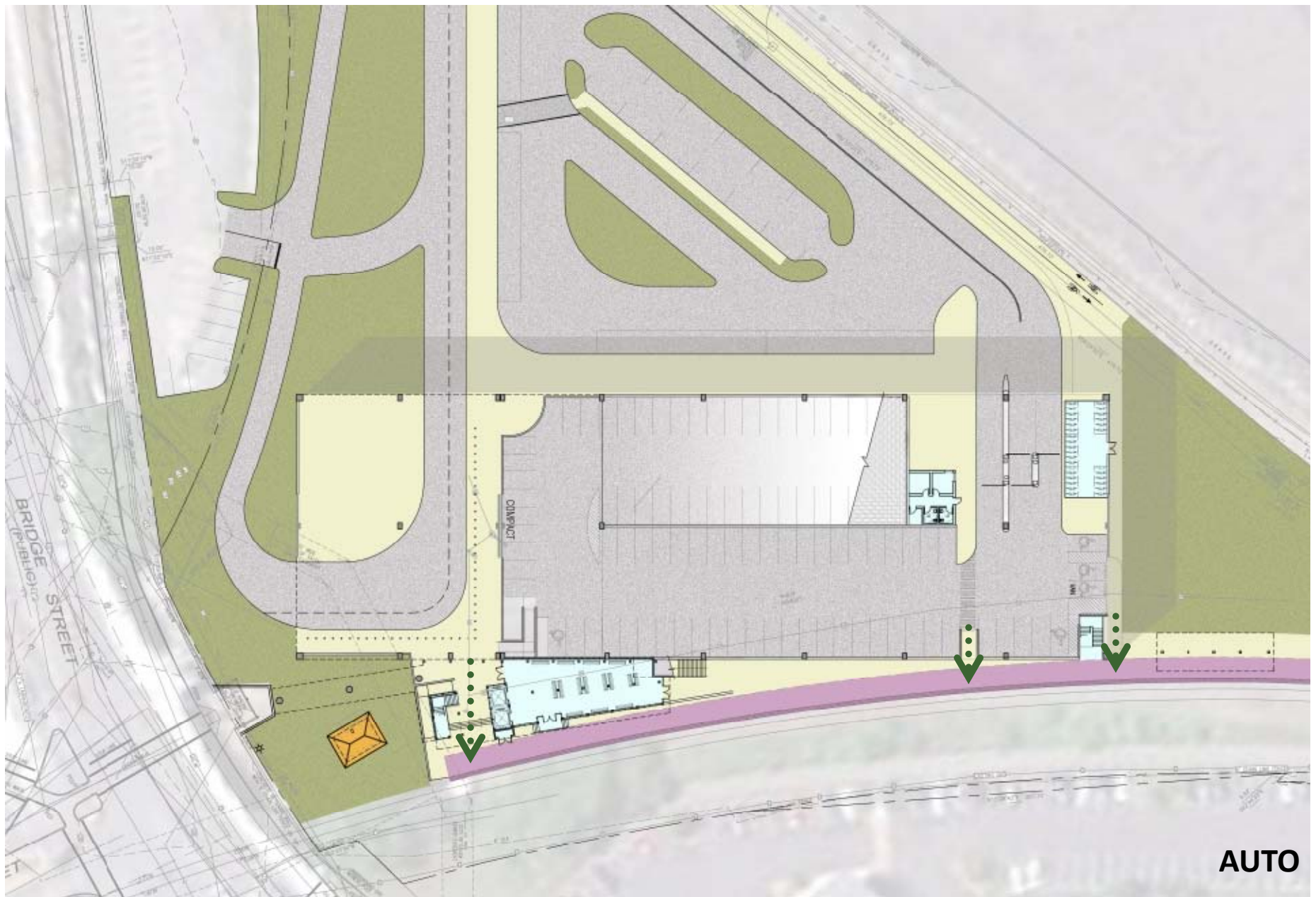
WAITING
ROOM/LOBBY
PEDESTRIAN BRIDGE

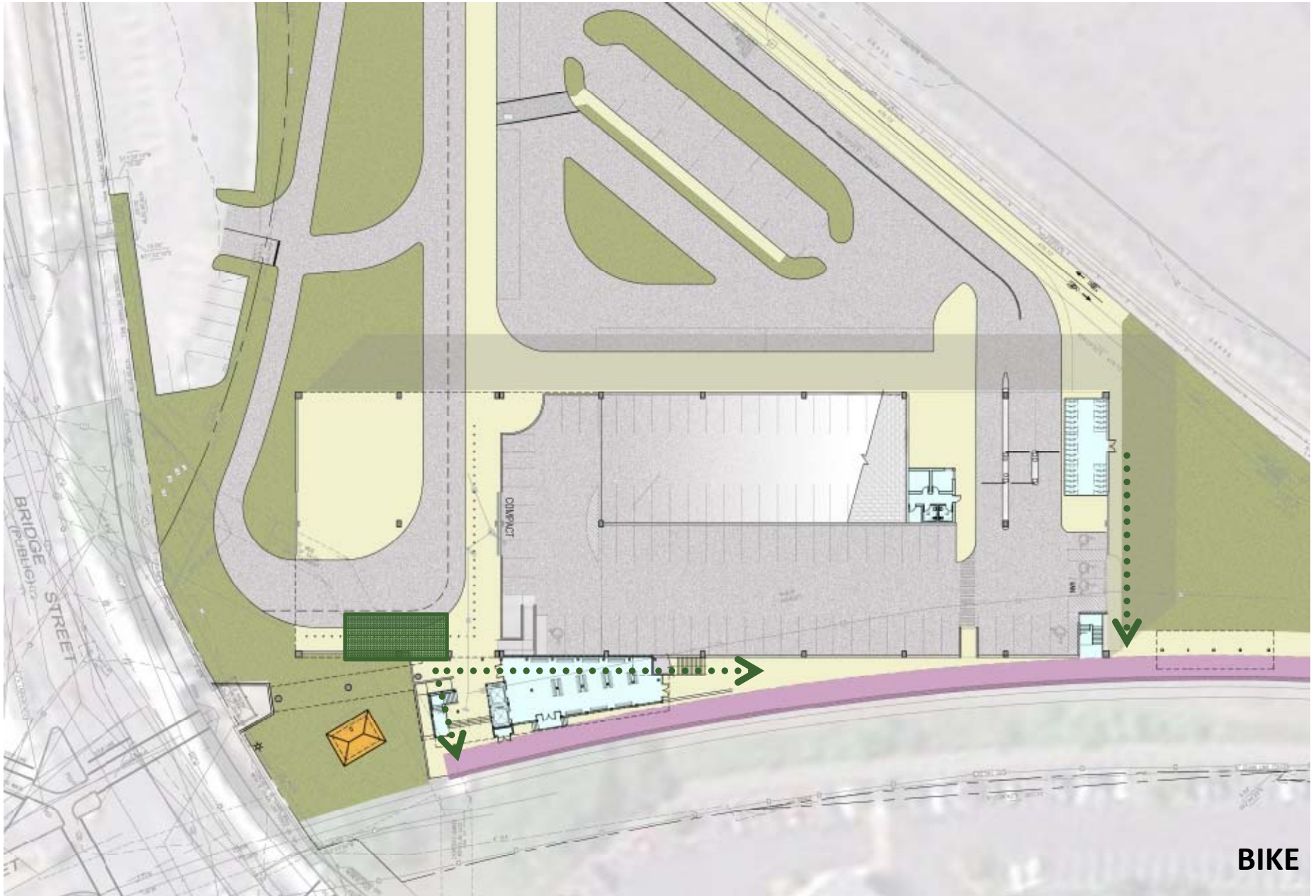




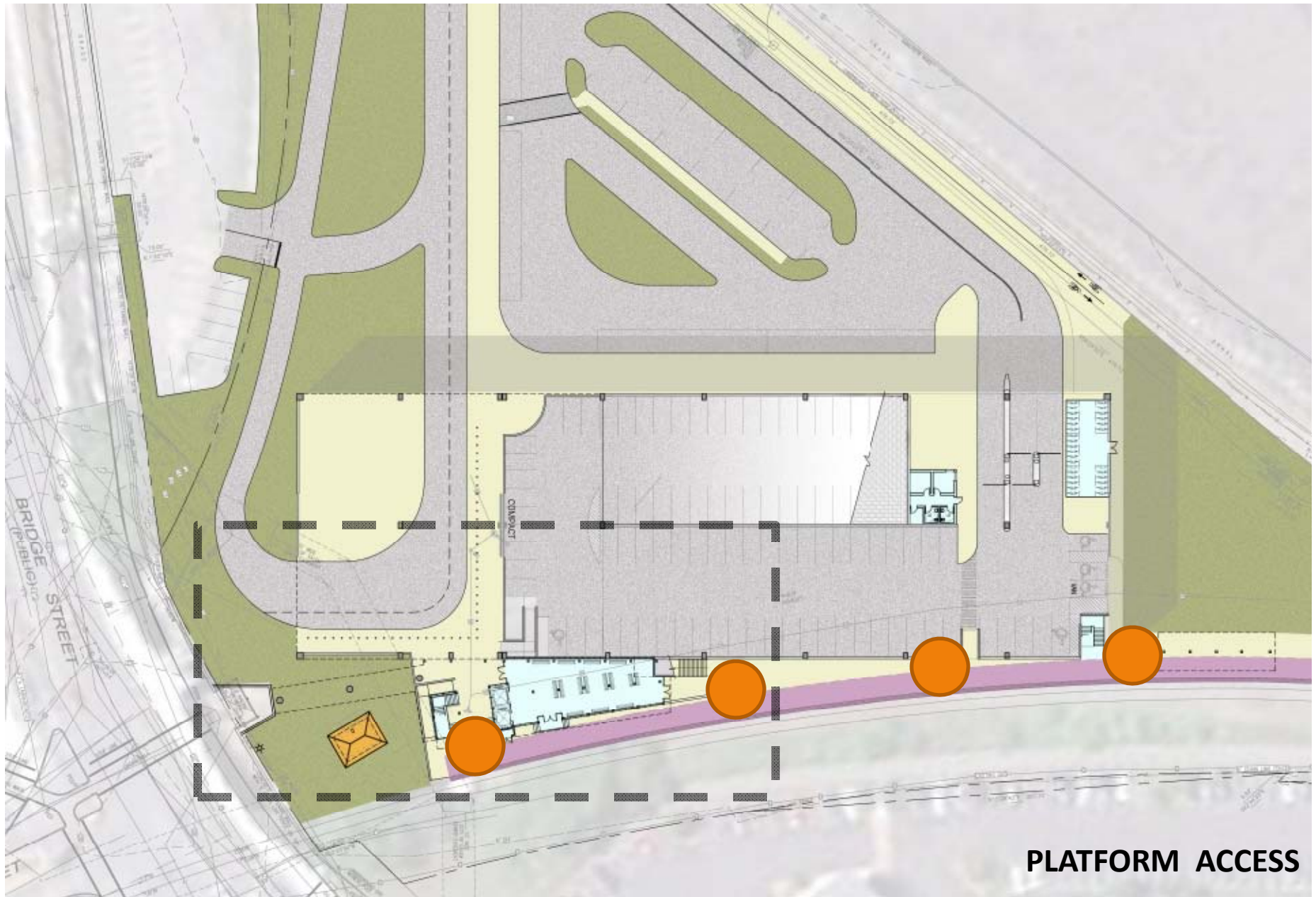






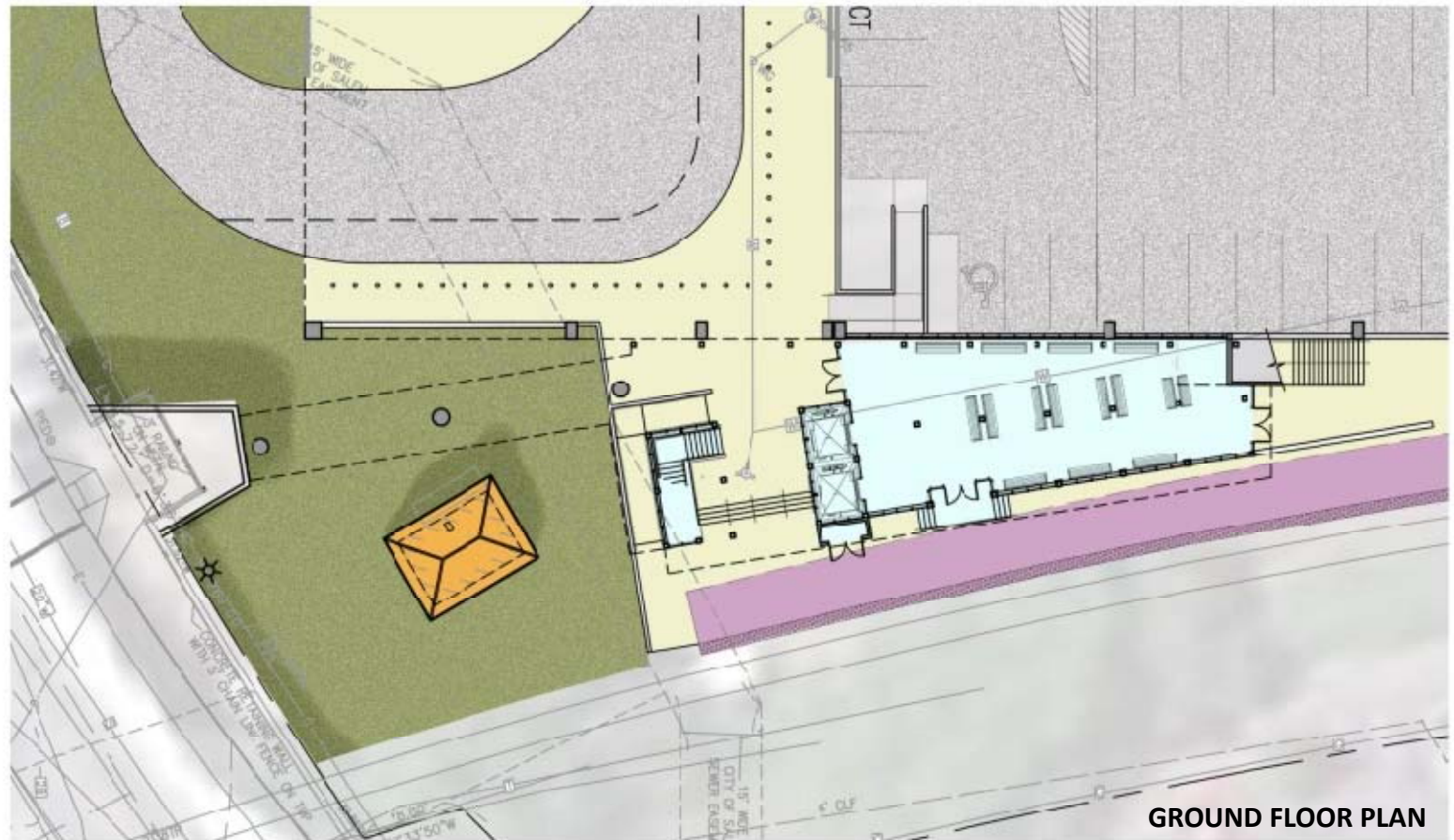
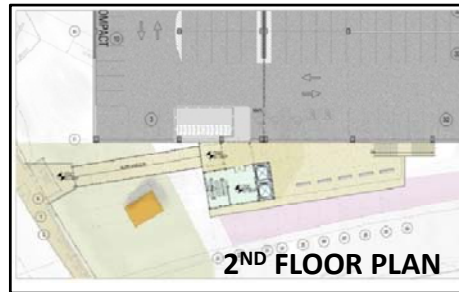






PLATFORM ACCESS

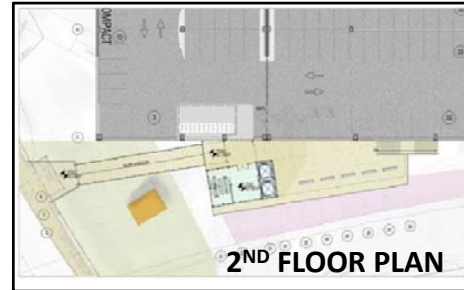






2ND FLOOR PLAN





3RD, 4TH FLOOR PLAN



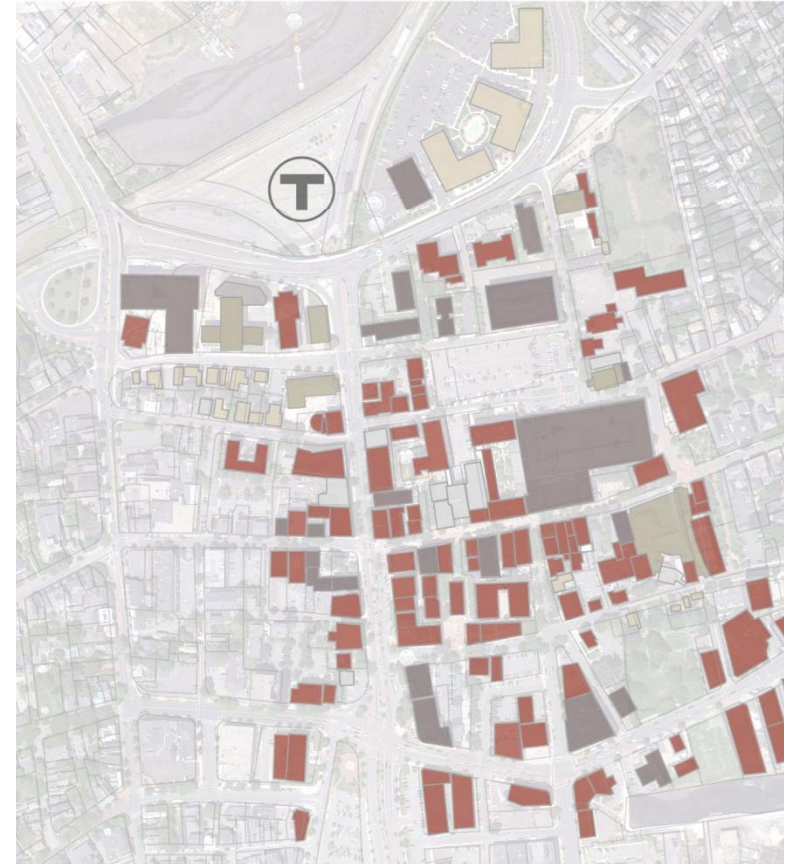


Building design strategies



SALEM INTERMODODAL STATION - DESIGN PRINCIPLES:

- Functional and durable
- Safe and secure
- Improve passenger experience
- Improve accessibility for all
- Respect its context
- Respect the budget
- Respect the environment

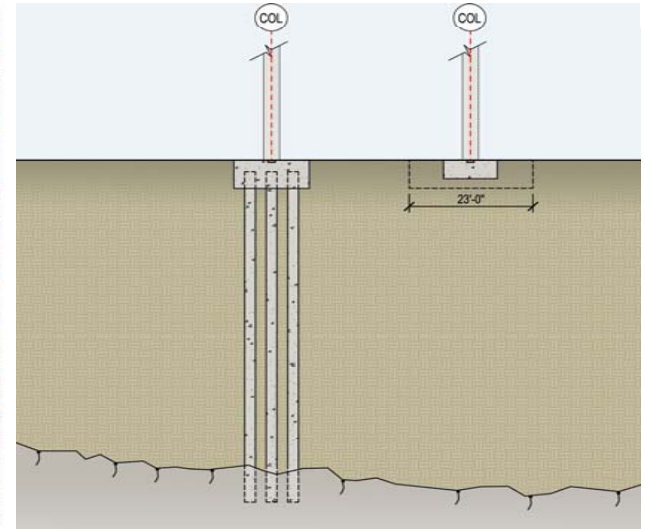
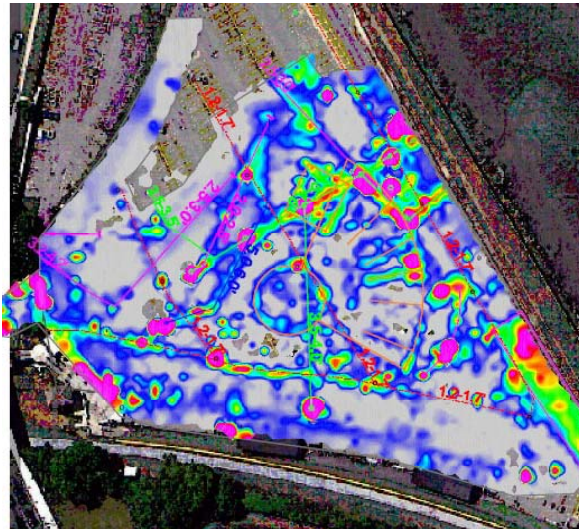


DESIGN APPROACH:

- Research and analysis
- Basic requirements – optimize value
- Strategies for additional project features

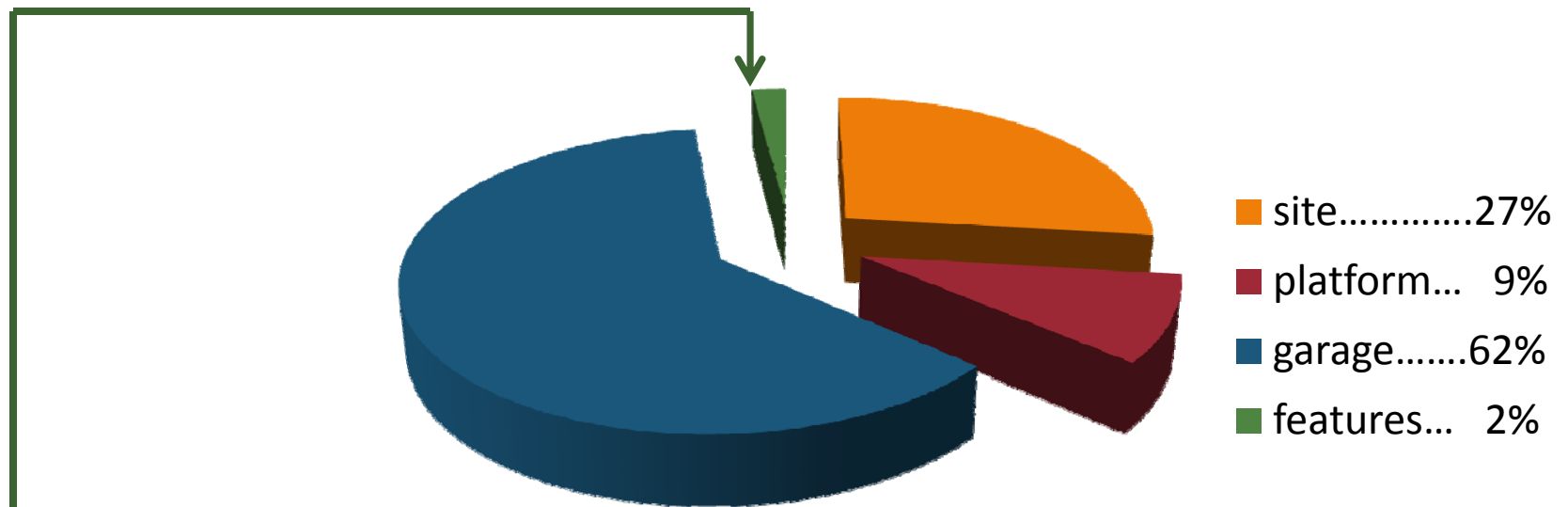
SALEM INTERMODAL STATION - CHALLENGES:

- Site geometry
- Active station
- Subsurface historic artifacts
- Poor soil conditions



SALEM INTERMODODAL STATION - BASIC COMPONENTS:

- Safe and efficient site circulation – all modes
- Full-height, full-length platform with minimum standard canopies
- Safe and secure parking structure for minimum of 550 cars



- Additional important features:
 - Passenger comfort/convenience
 - Context-appropriate design

PUBLIC COMMENT & INPUT – BUILDING DESIGN:

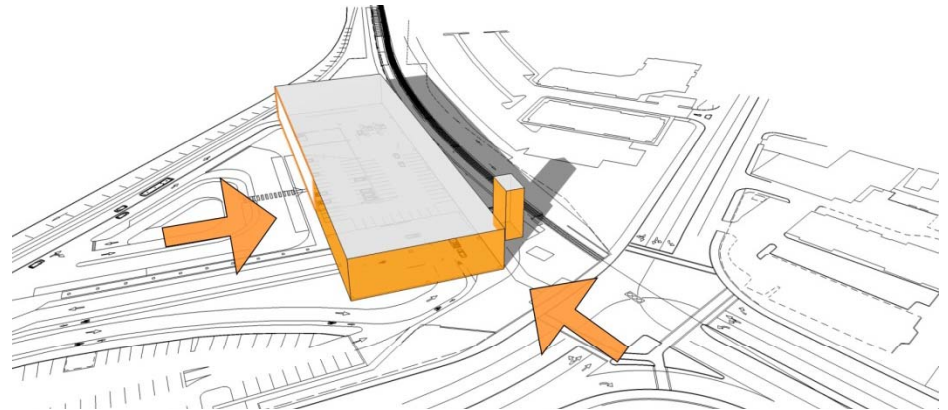
1. WEATHER PROTECTION

- Canopies
- Enclosed lobby
- Heat
- Views



2. CONTEXT SENSITIVE

- Scale
- Color
- Material
- Texture



BUILDING DESIGN STRATEGIES:

BALANCE: *Address aspects of both city context and user amenity*

Option A1 - “Connectivity”

Option A2 – “Maritime”

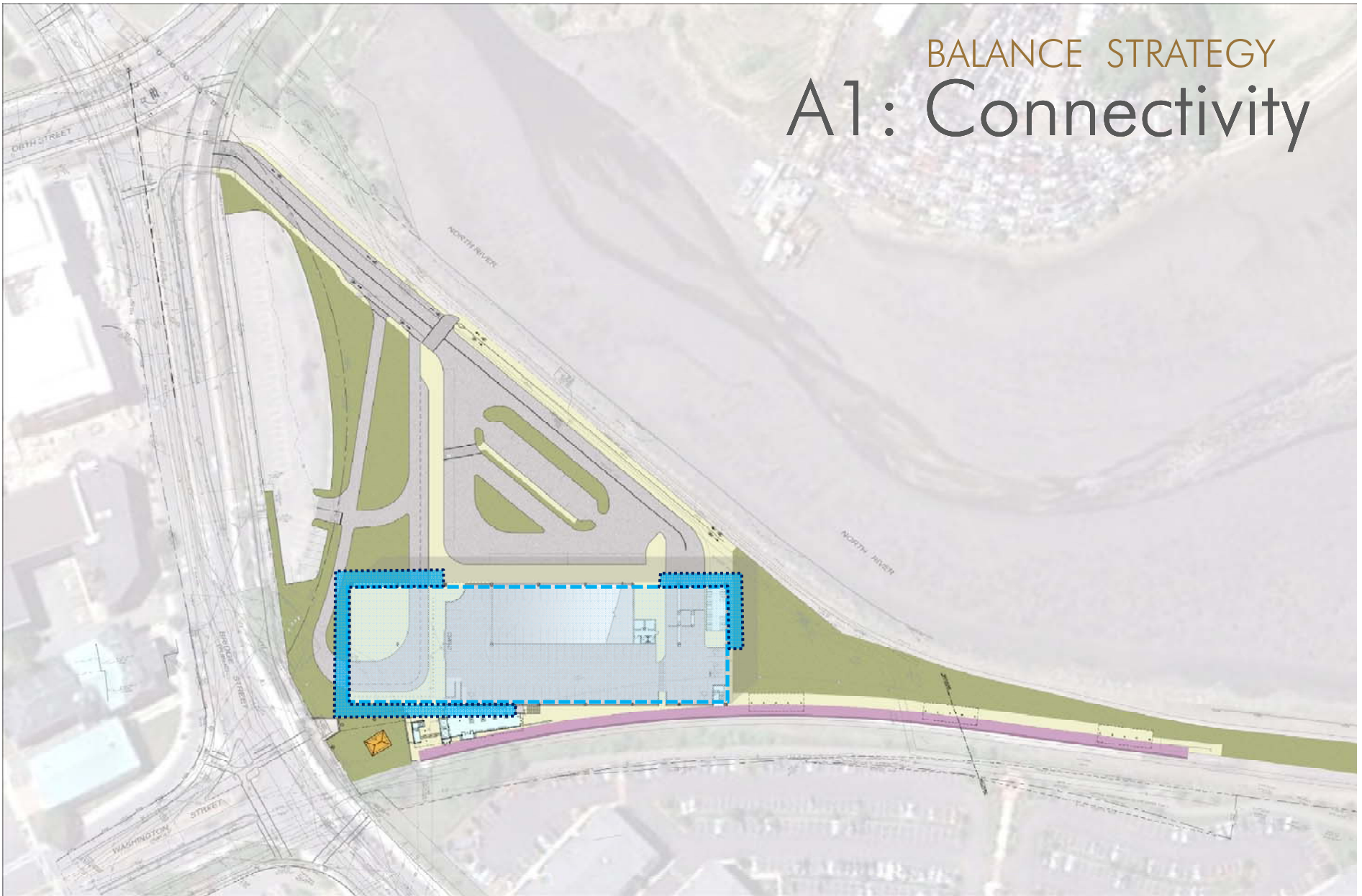
EMPHASIS: *Maximize investment in one area*

Option B1 - “Passenger experience”

Option B2 - “Urban fabric”



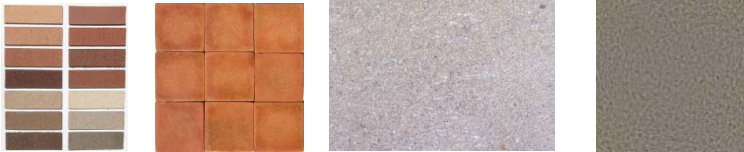
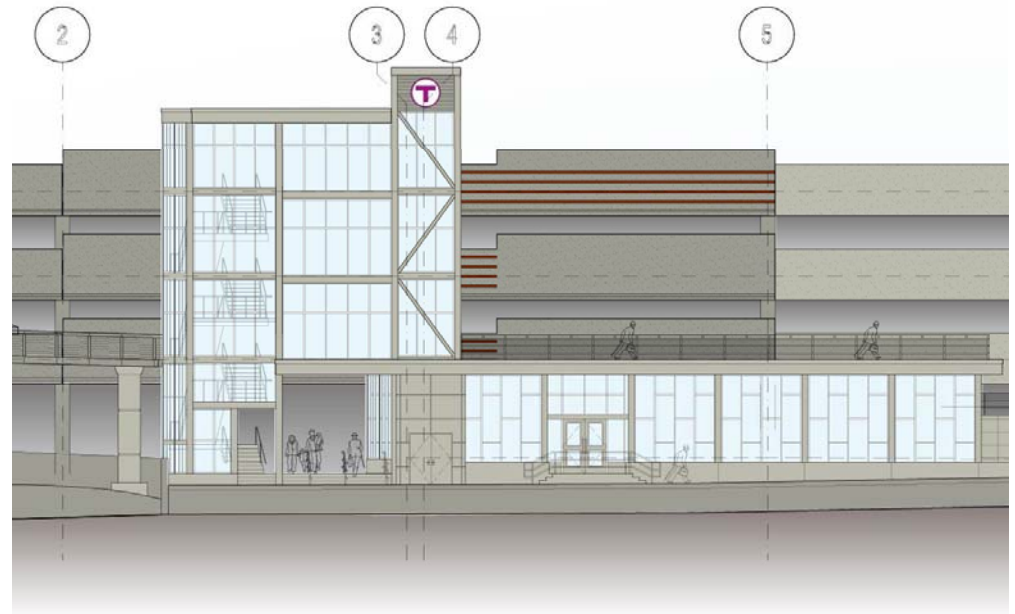
BALANCE STRATEGY A1: Connectivity



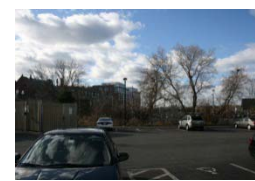
OPTION A1

CONNECTIVITY

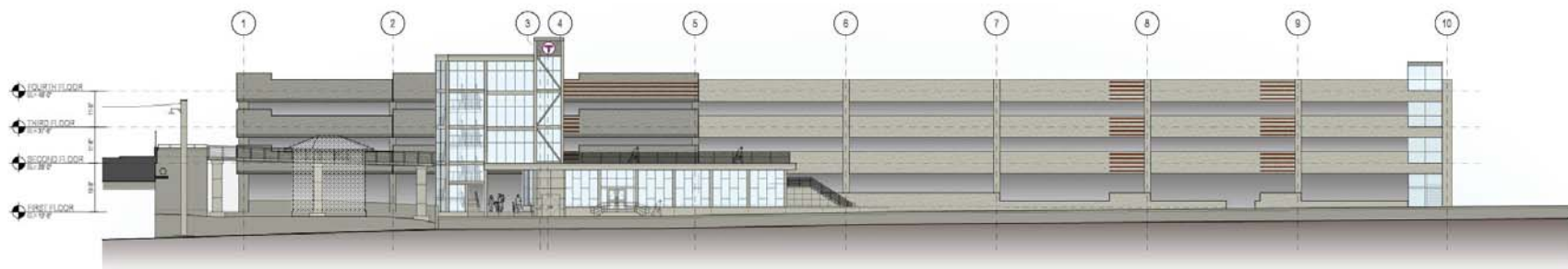
MASSING



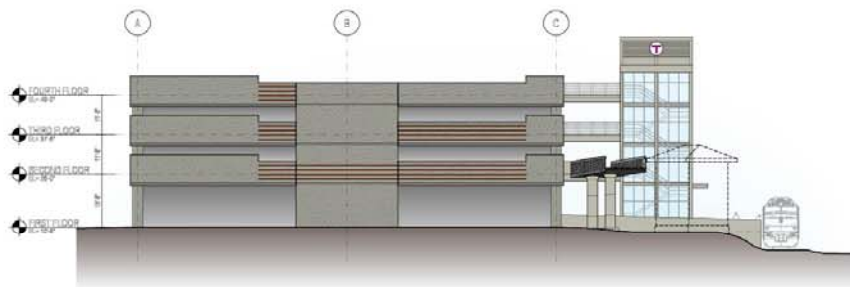
MATERIALS



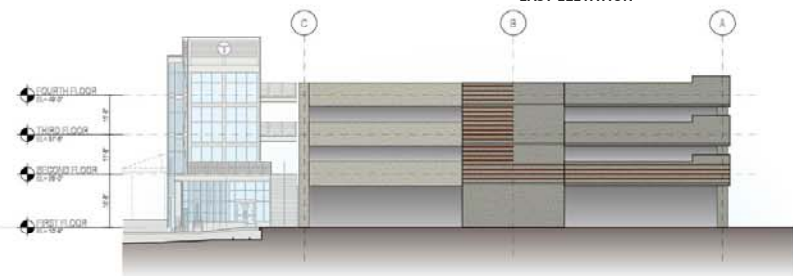
CONTEXTUAL IMAGES



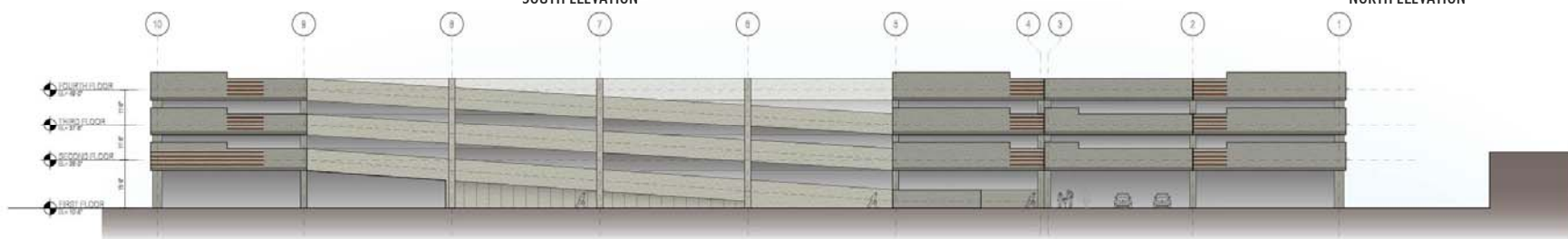
EAST ELEVATION



SOUTH ELEVATION

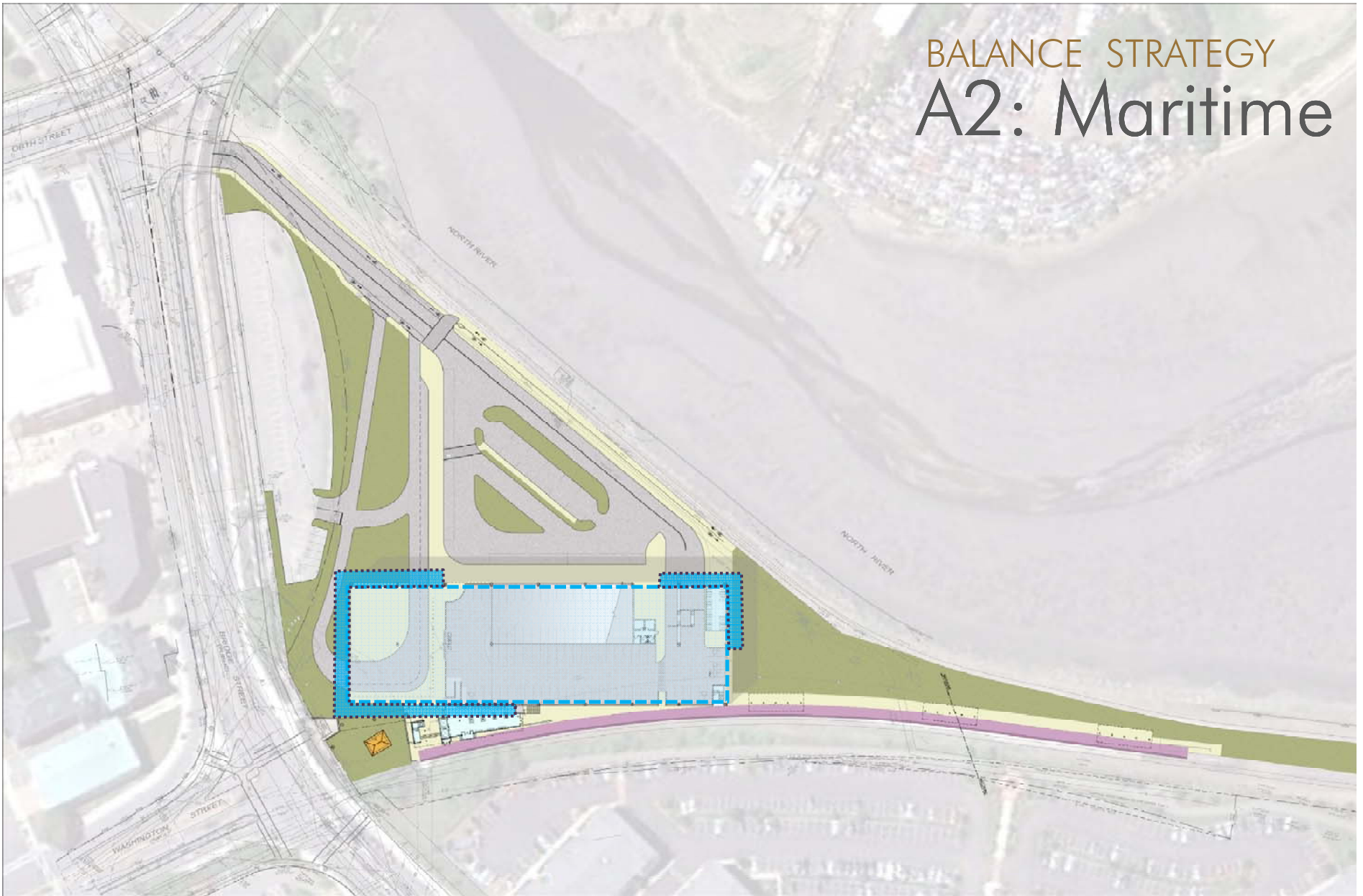


NORTH ELEVATION



WEST ELEVATION

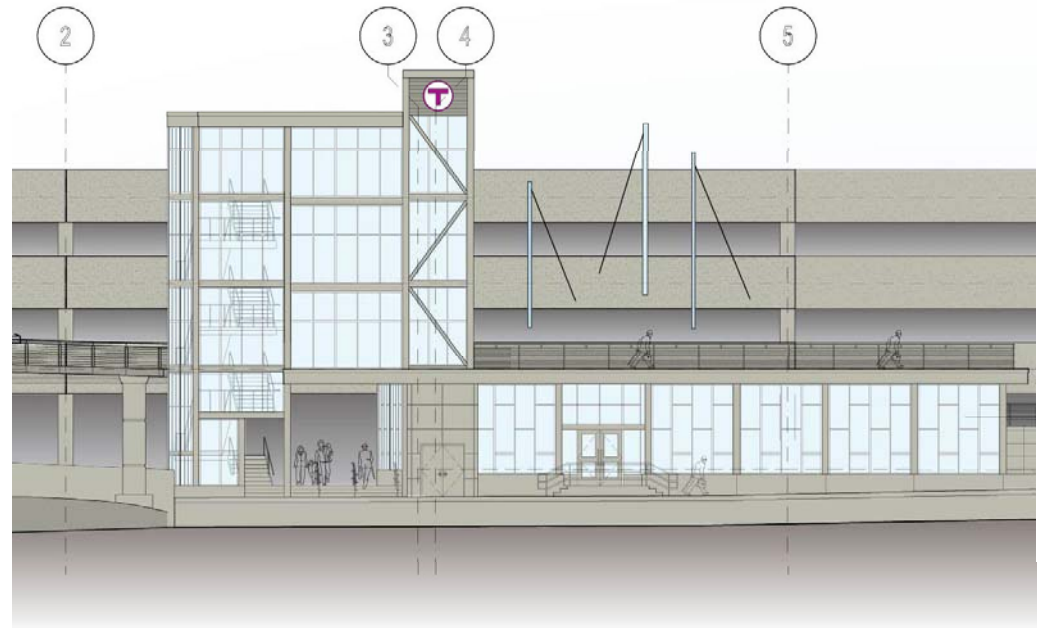
BALANCE STRATEGY A2: Maritime



OPTION A2

MARITIME CONTEXT

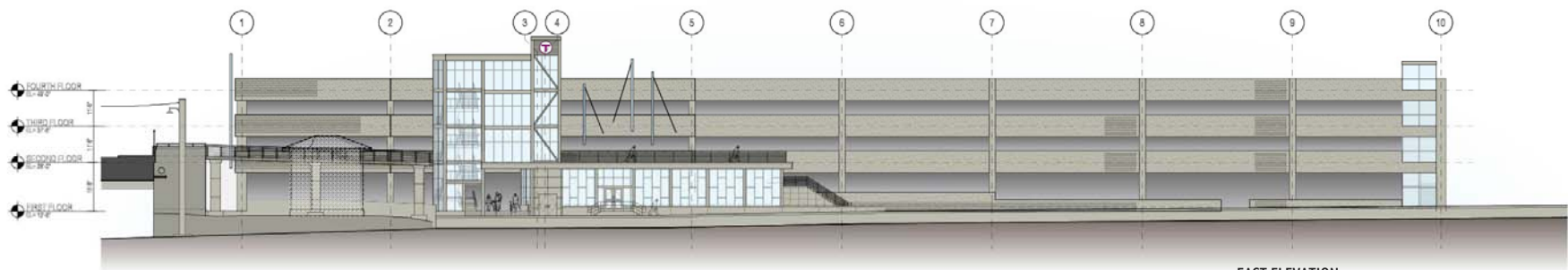
MASSING



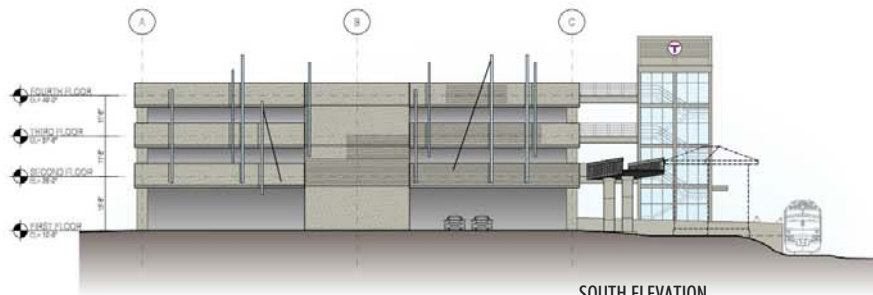
MATERIALS



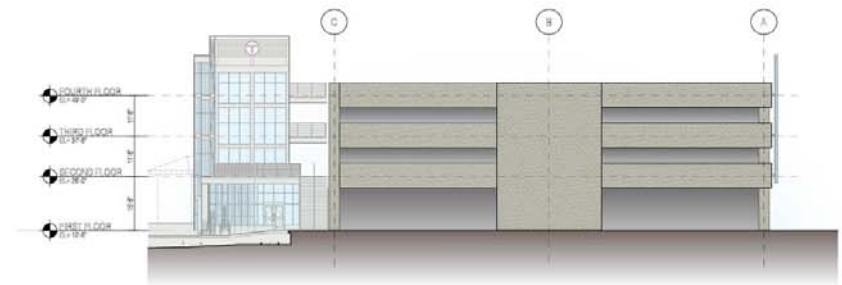
CONTEXTUAL IMAGES



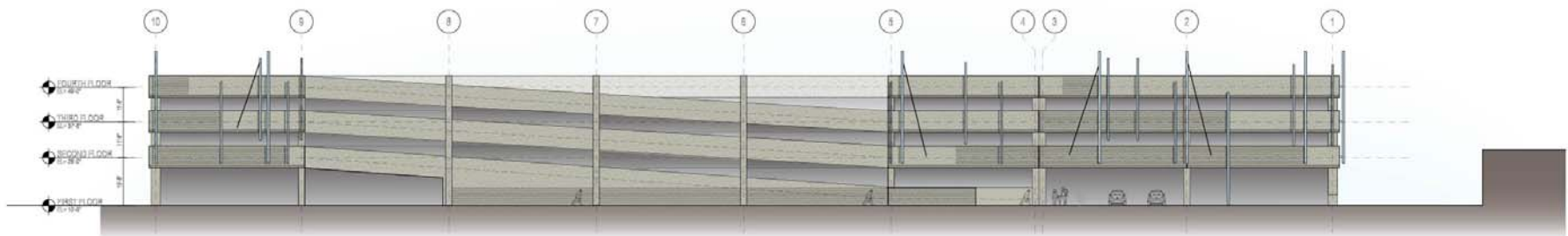
EAST ELEVATION



SOUTH ELEVATION

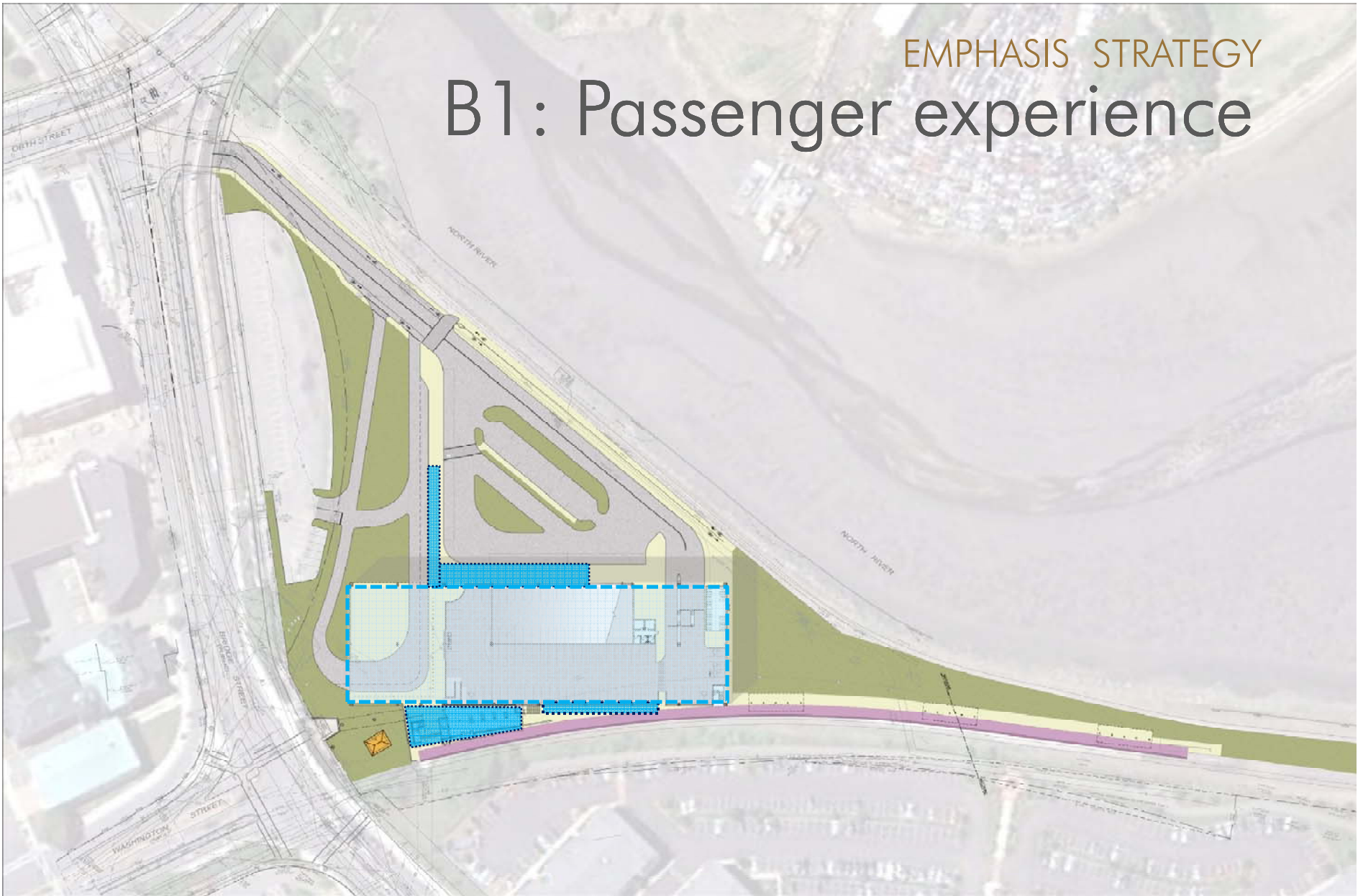


NORTH ELEVATION



WEST ELEVATION

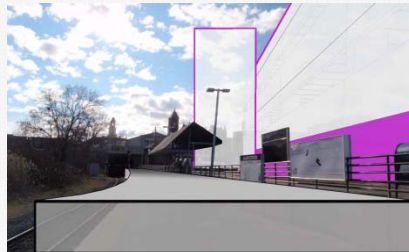
EMPHASIS STRATEGY B1: Passenger experience



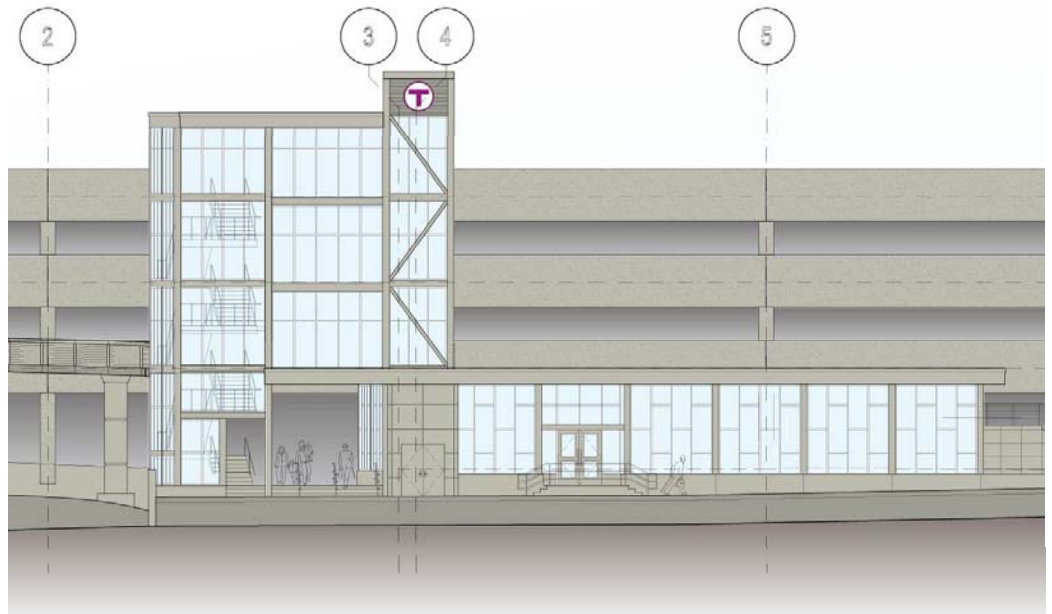
OPTION B1:

PASSENGER EXPERIENCE

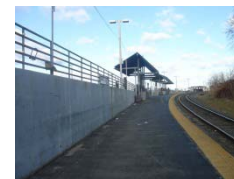
MASSING

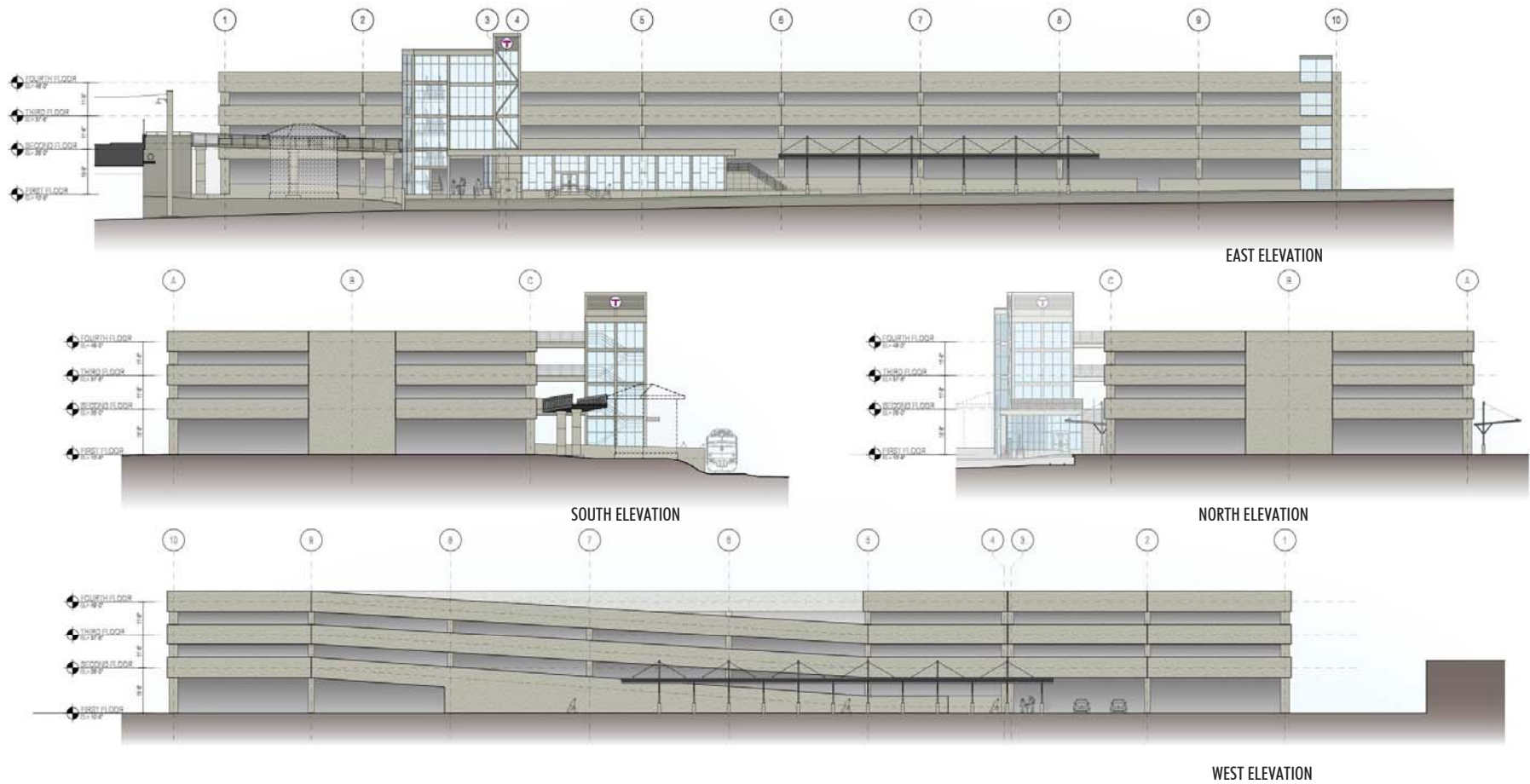


MATERIALS

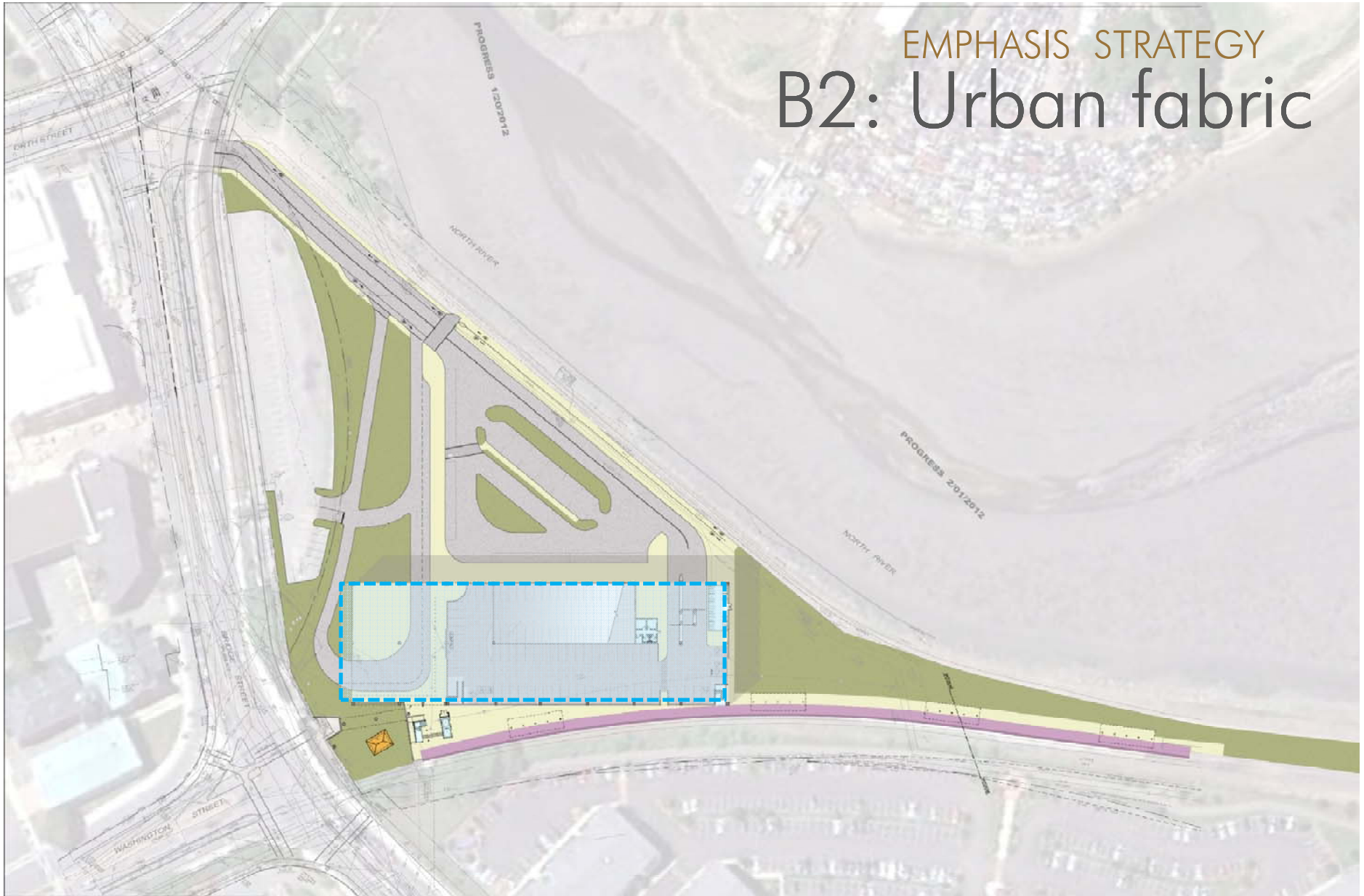


CONTEXTUAL IMAGES





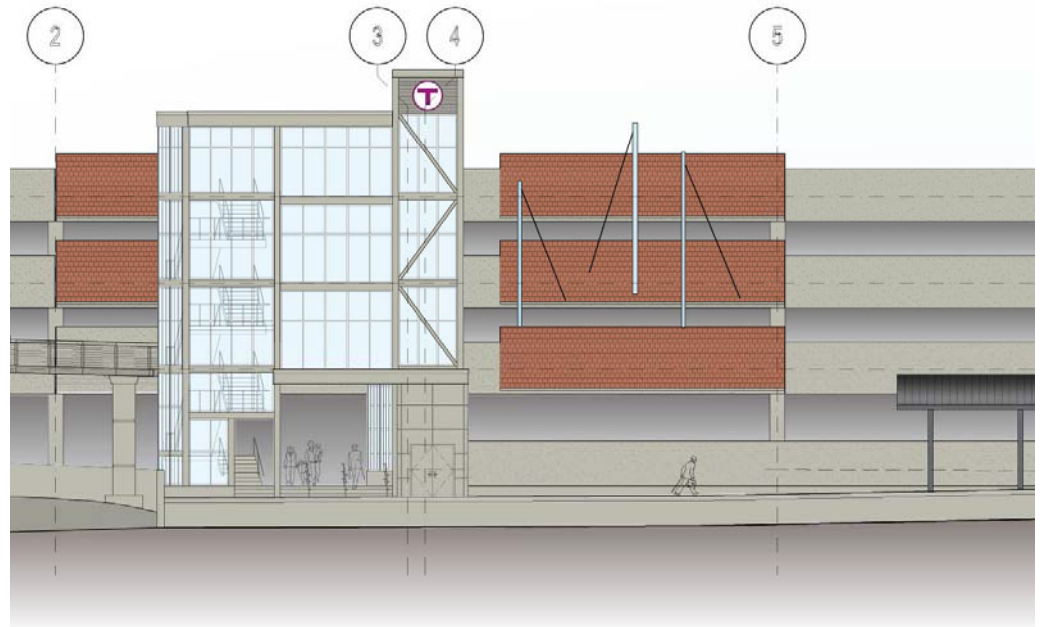
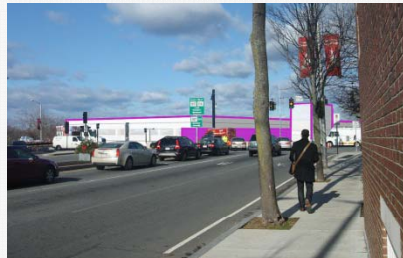
EMPHASIS STRATEGY B2: Urban fabric



OPTION B2:

URBAN FABRIC

MASSING

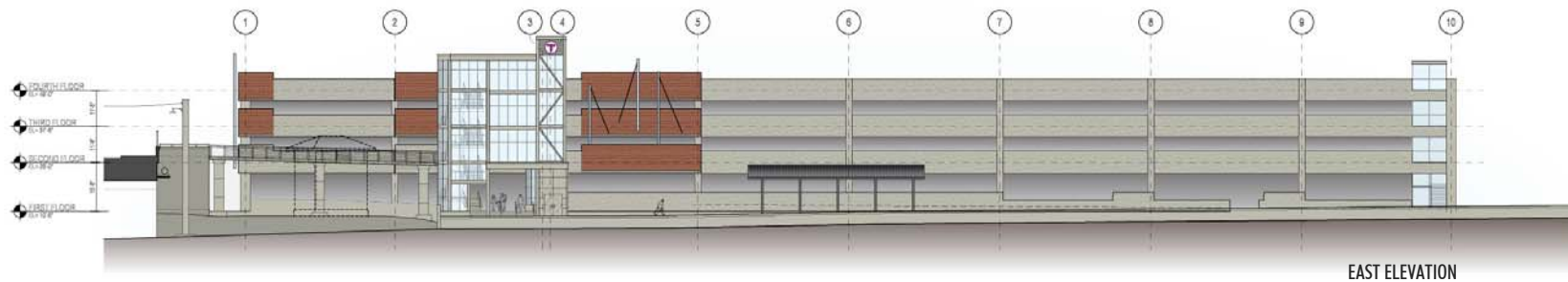


MATERIALS

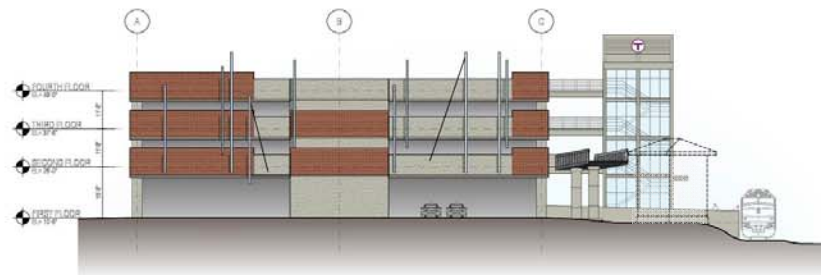


CONTEXTUAL IMAGES

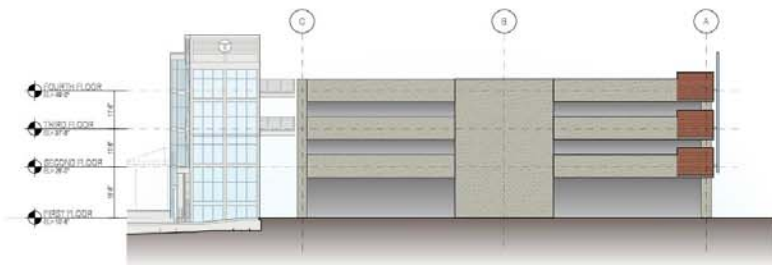




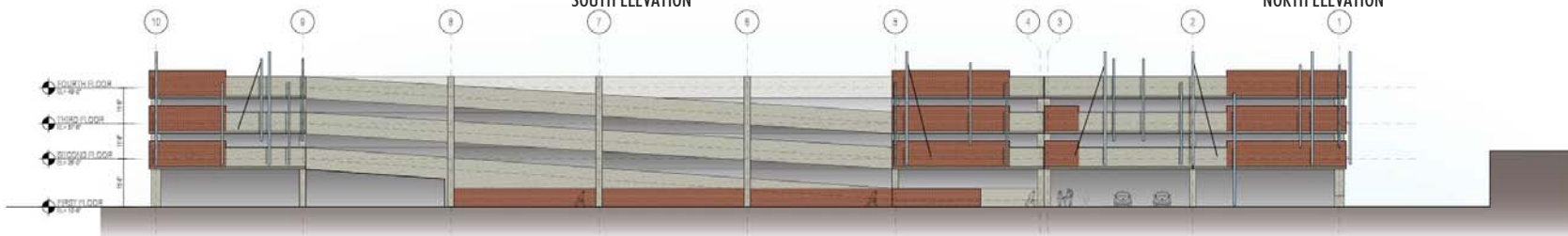
EAST ELEVATION



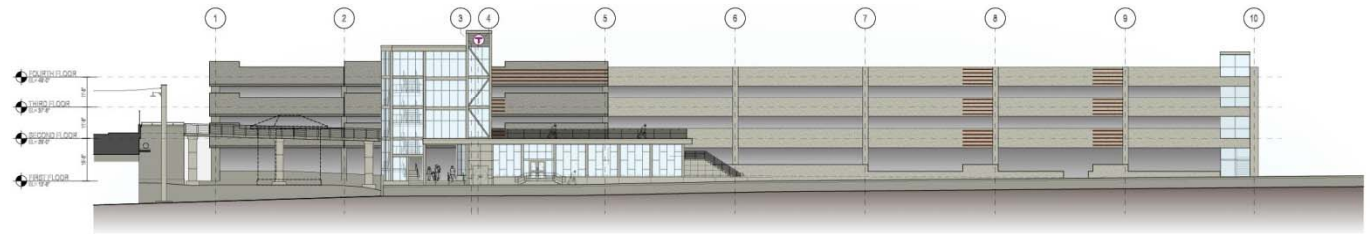
SOUTH ELEVATION



NORTH ELEVATION

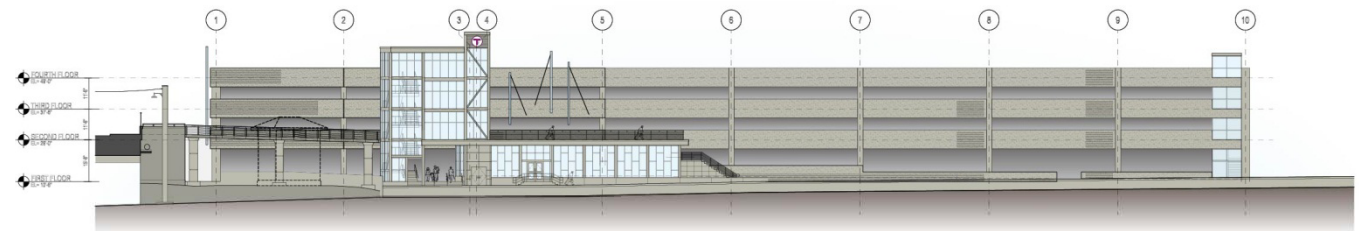


WEST ELEVATION



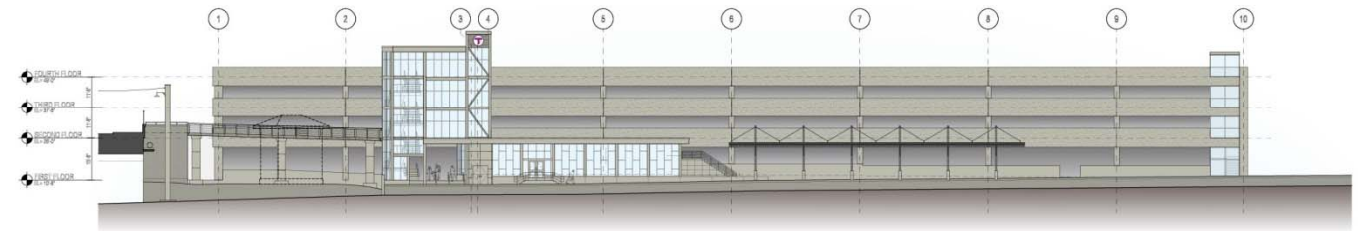
OPTION A1

CONNECTIVITY



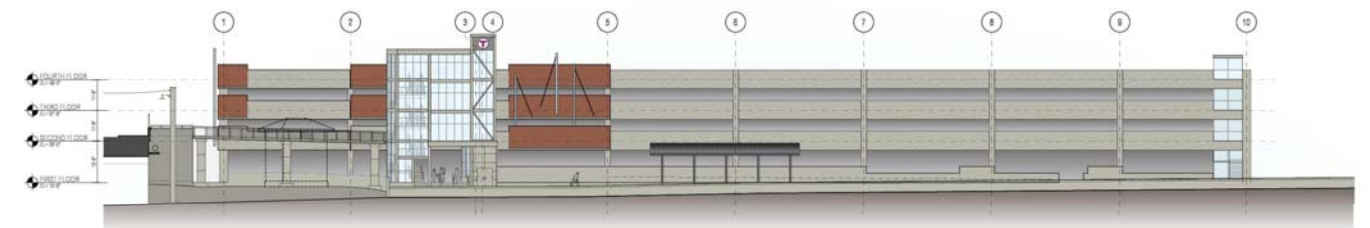
OPTION A2

MARITIME



OPTION B1:

PASSENGER EXPERIENCE



OPTION B2:

URBAN FABRIC

SALEM INTERMODAL STATION

APRIL 9, 2012 PRESENTATION

