

SALEM INTERMODAL STATION

June 19, 2013
Public Meeting



PUBLIC PROCESS

- ✓ Purpose of Feb 16 discussion: *input on project function & features*
- ✓ Purpose of April 9 discussion: *input on building design strategies*
- ✓ Purpose of June 26 discussion: *input on suggested design proposal*
- ✓ Purpose of Nov 13 discussion: *input on proposed design refinements*
- ✓ Purpose of Mar 20 discussion: *input on phasing & design details*
- Purpose of tonight's discussion: ***Final Design refinement and phasing***



AGENDA

- Project overview
- Pedestrian bridge design
- Lighting design
- Phasing



SITE CIRCULATION



Site plan – PRIMARY FUNCTIONAL ELEMENTS

AMENITIES



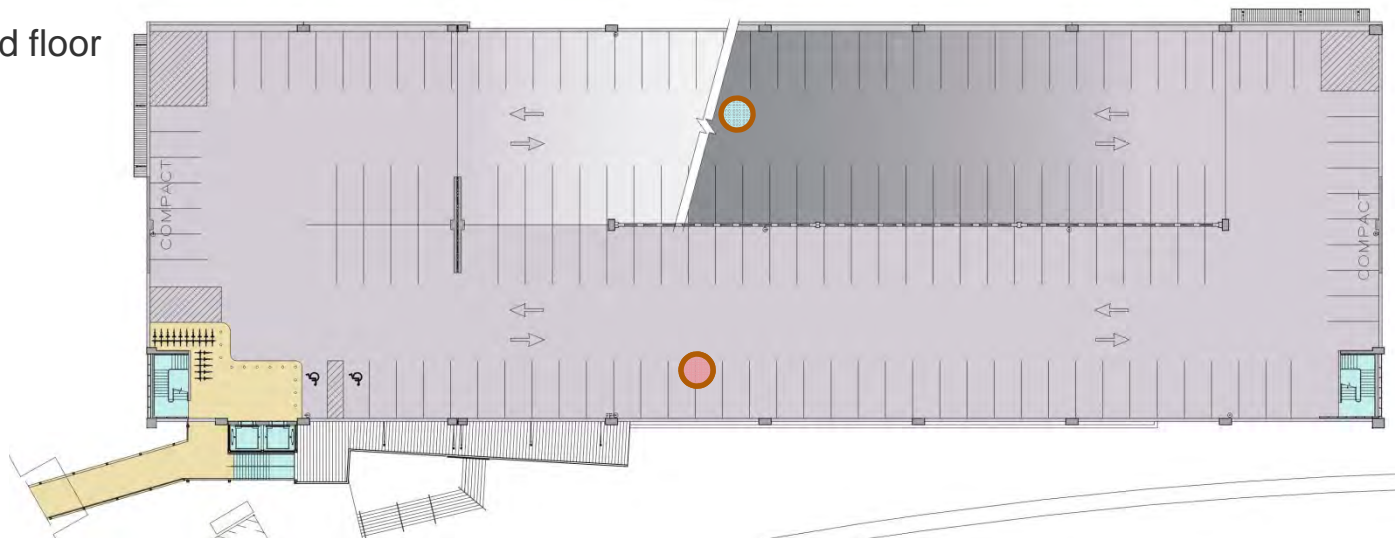
Bike Racks

INTERNAL CIRCULATION

Ground floor

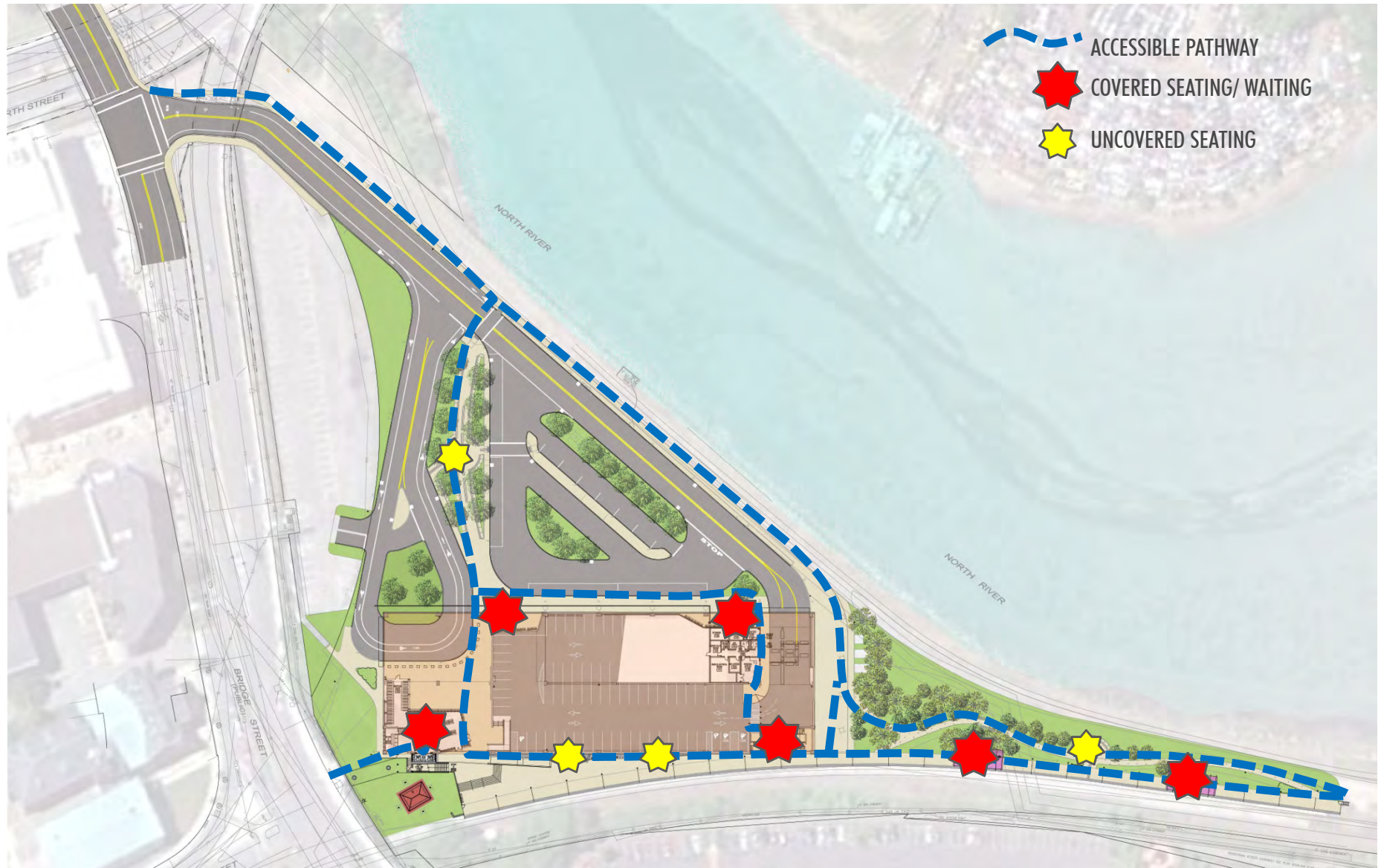


Second floor



Internal Circulation

SITE ACCESSIBILITY



Site plan – PRIMARY FUNCTIONAL ELEMENTS

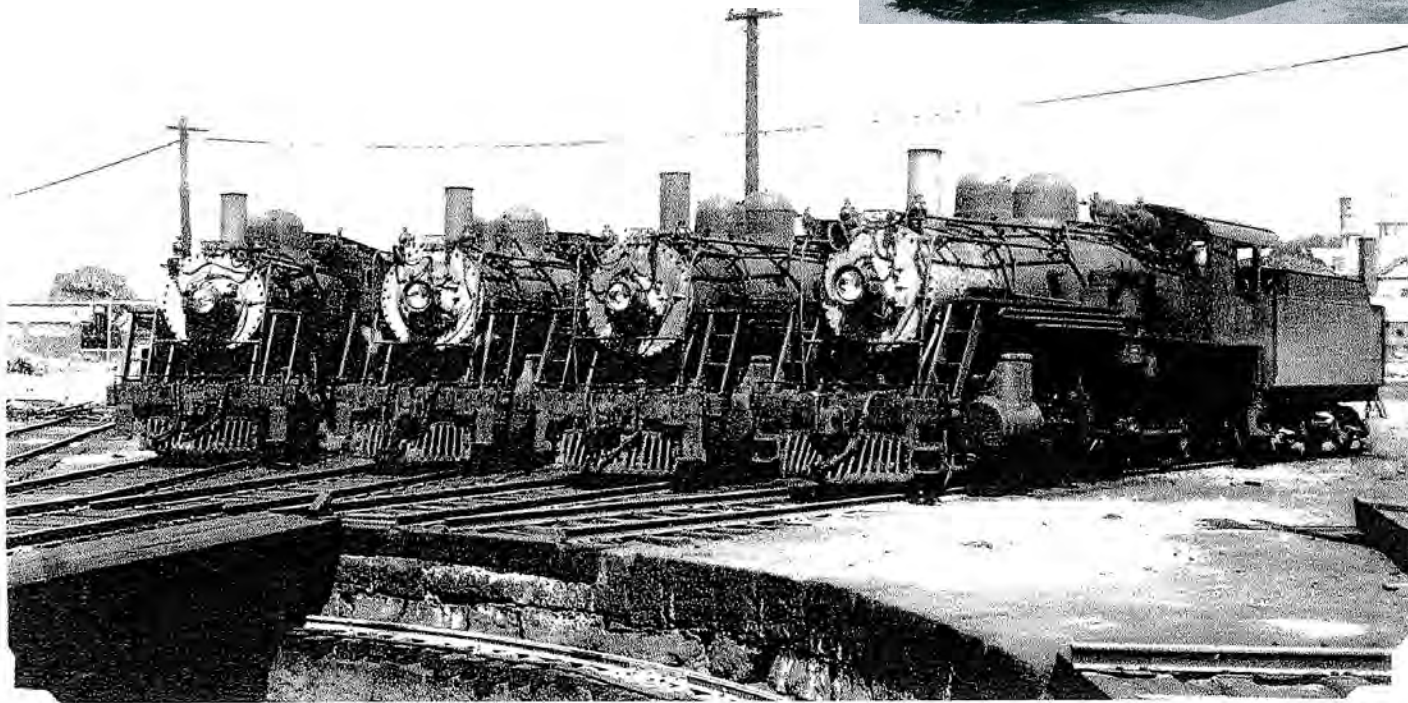
AMENITIES



Canopy Design

ELEVATION TREATMENT

Boston & Maine Railroad
Locomotive 1455, Salem MA



BHS
A HALE

L To R 1431 - 1368 1455 - 1478
(TURN TABLE IN FOREGROUND)

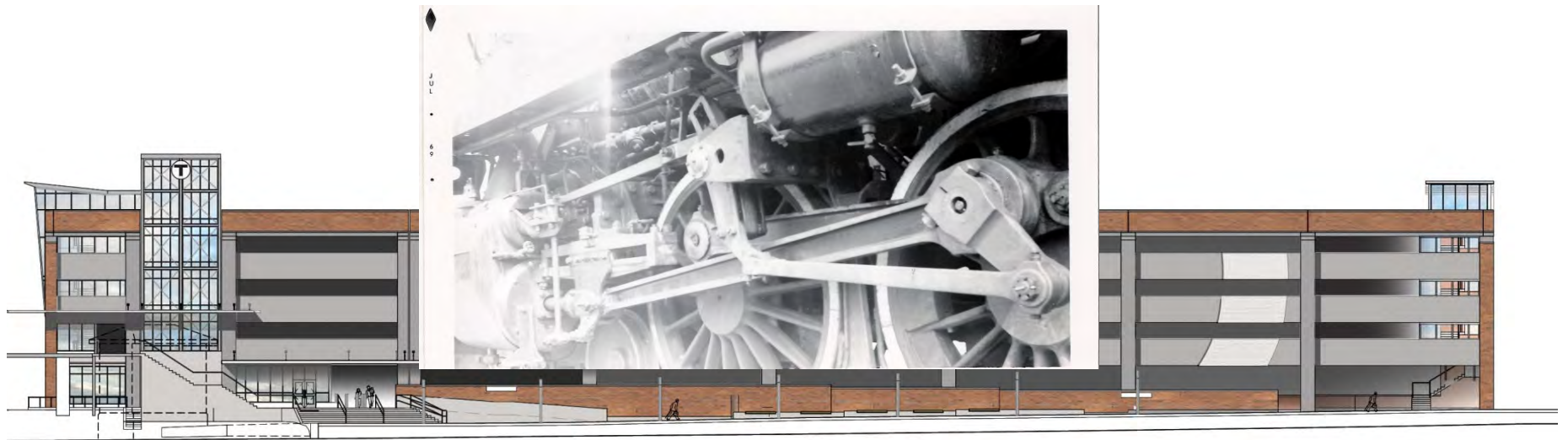
CA - 1940'S
SALEM JAIL AT FAR RIGHT

AMENITIES

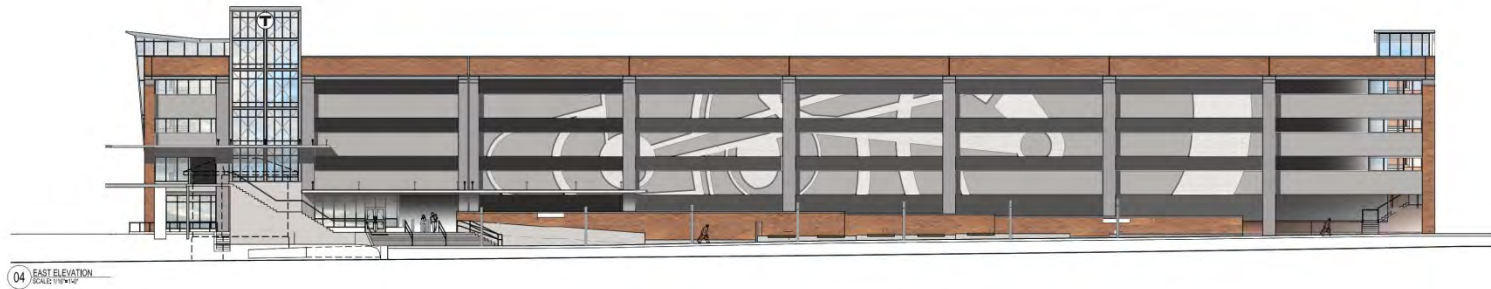


Pedestrian Plaza

ELEVATION TREATMENT



ELEVATIONS

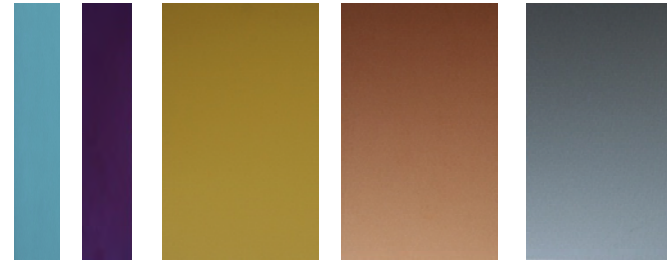


MATERIALS

Perforated Metal Screens



Metal Color Palette



Textured Concrete Brick



VIEW FROM ACCESS ROADWAY



TRACKSIDE VIEW





Pedestrian bridge

Pedestrian bridge

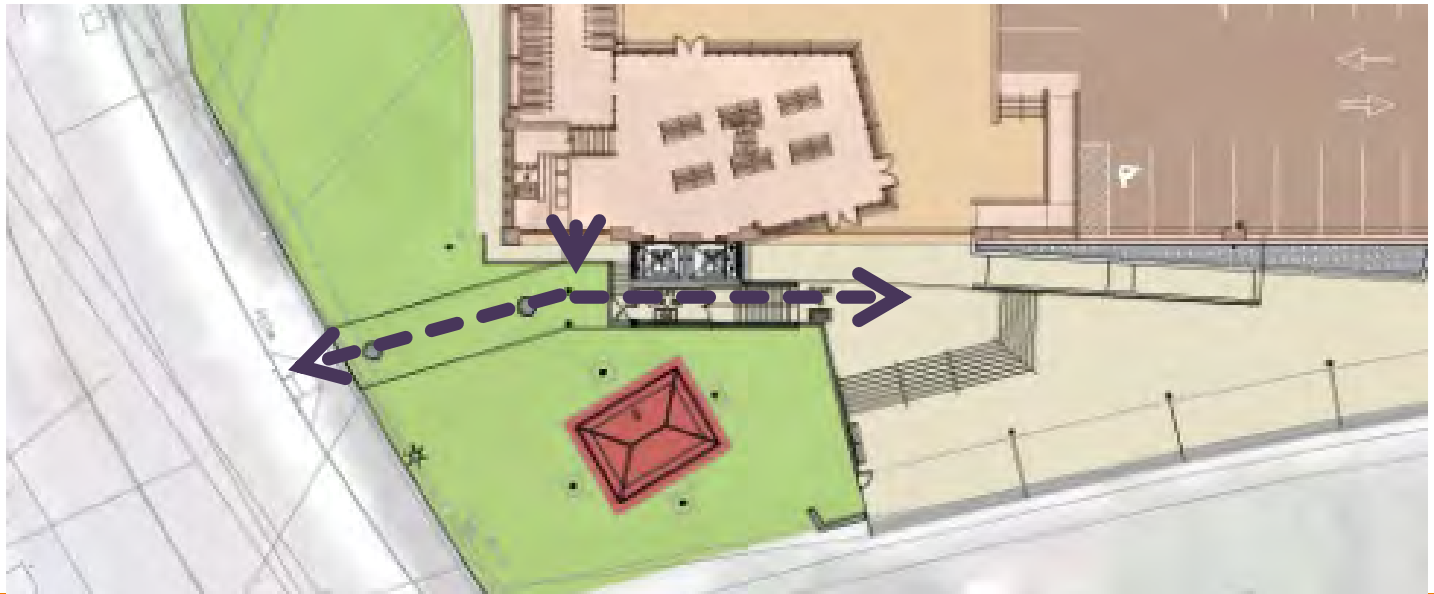


Pedestrian bridge

Objectives: Safety, Celebratory, Respectful

Considerations:

- Double-sided, multi-level, 3-point connector
- Celebrate entry
- Identifiable from distance, pedestrian scaled
- Respect signal tower
- Safe and protected from weather



ALTERNATIVE STUDIES



Pedestrian Bridge Design - Studies

AMENITIES



Pedestrian Bridge Design - **Studies**

VIEW FROM WASHINGTON ST.



PREFERRED DESIGN



Pedestrian Bridge Design

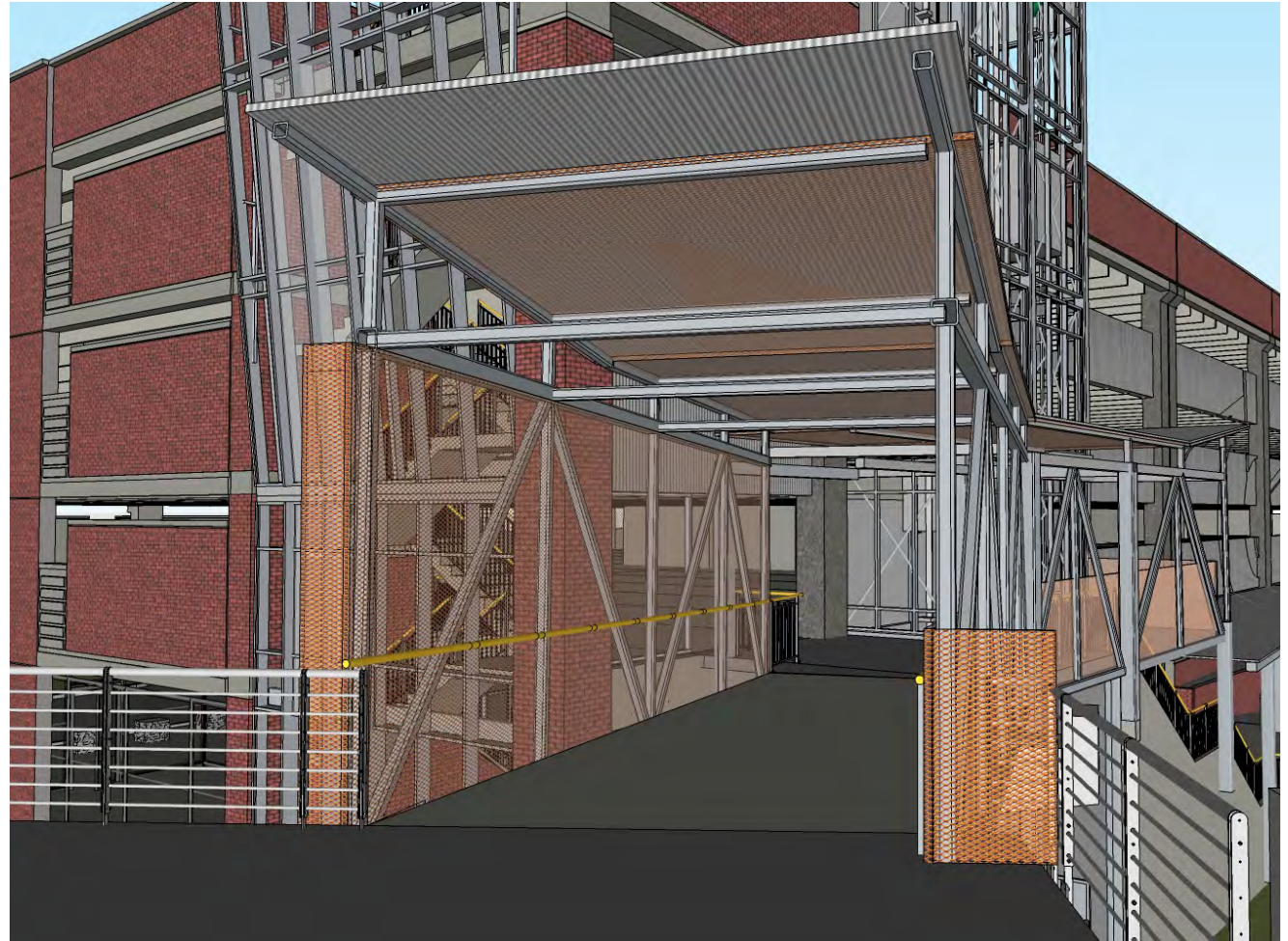


AMENITIES



Pedestrian Bridge Design

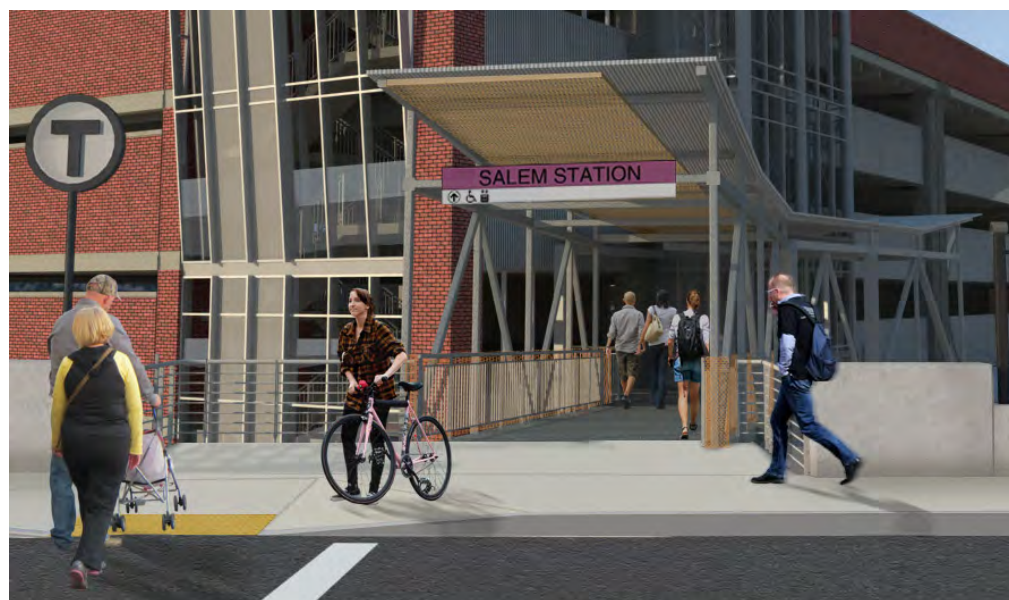
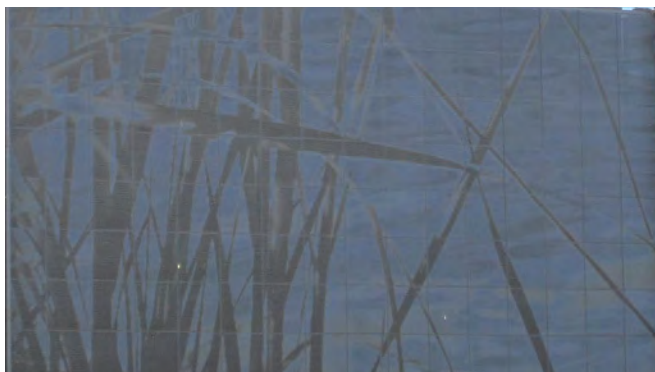




Opportunities for art program integration



Opportunities for art program integration



Opportunities for art program integration

Lighting

LIGHTING DESIGN - UNDERSTANDING

Objective: Safety with respect to context.

Considerations:

- Personal safety
- Effect on neighbors
- Effect on broader community /sense of place

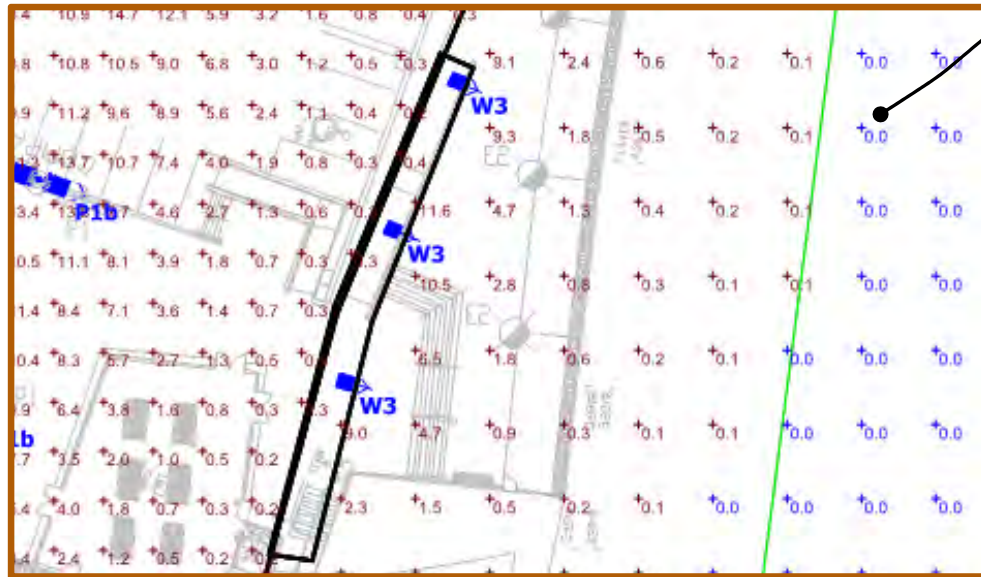
Requirements:

- MBTA standards
- Industry standards
- State building and energy codes
- Sustainable design / 'green' initiatives

LIGHTING DESIGN - APPROACH

Primary zones:	Updated relative levels	
Platform	0	
Garage roof	0	
Site driveways/bikeways	-	
Site walkways	-	
Garage interior	-	
Pedestrian entrances, bridges	+	
Stairs, elevators, lobbies	++	

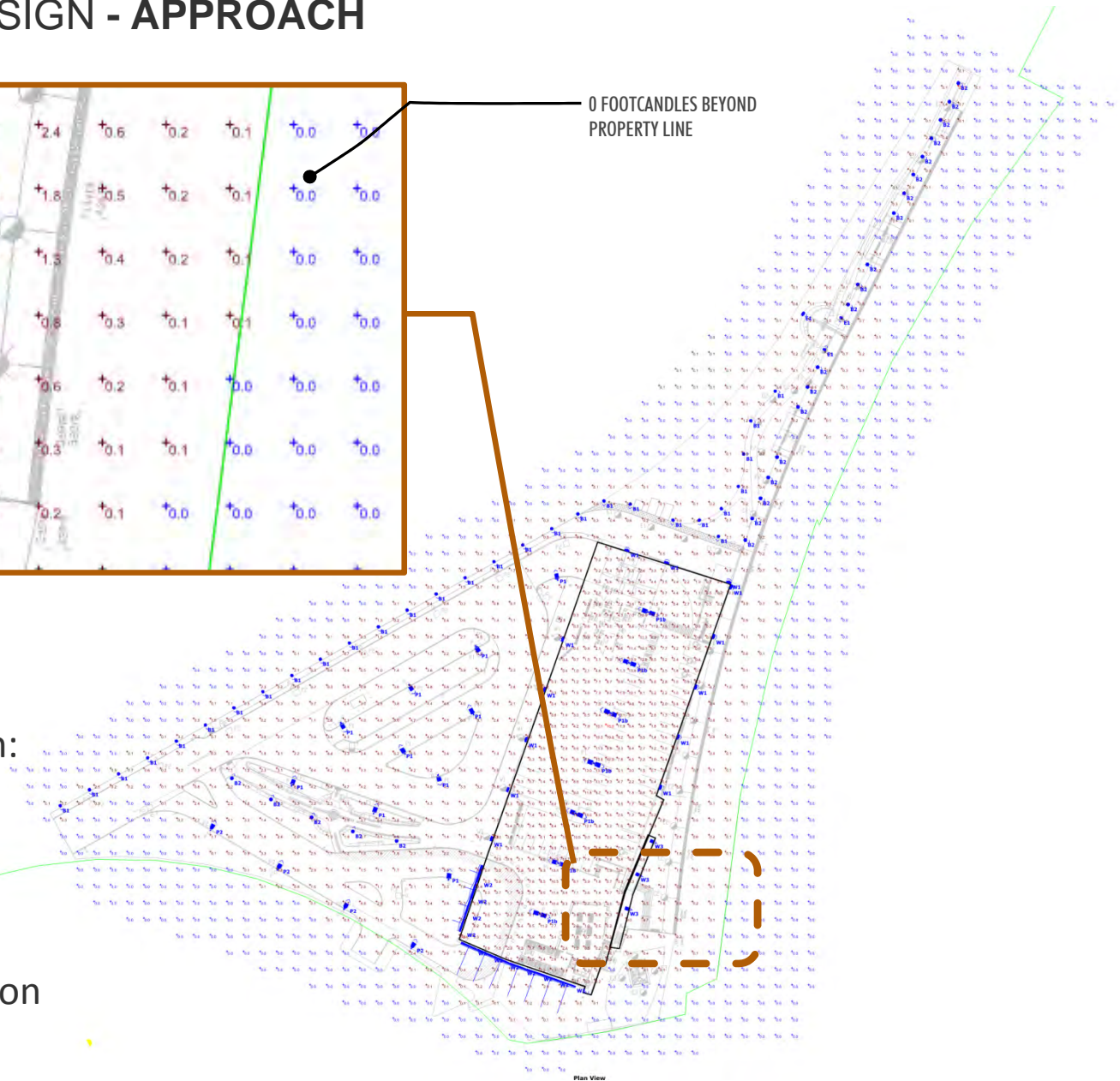
LIGHTING DESIGN - APPROACH



0 FOOTCANDLES BEYOND
PROPERTY LINE

Fixture selection:

- Type
- Output
- Height
- Distance
- Configuration



Plan View

LIGHTING DESIGN - APPROACH

Primary zones:	Updated relative levels	MBTA Standard	Industry Standard	Proposed Design
Platform	0	20-30	5	5
Garage roof	0	3-5	2	4
Site driveways/bikeways	-	3-5	.6	2.5
Site walkways	-	3-5	.6	2
Garage interior	-	3-5	2	2.5
Pedestrian entrances, bridges	+	15	4.3	10
Stairs, elevators, lobbies	++	25-30	2	20

- Industry standard based on IESNA RP-20
- Values are average values across the entire zone, variations will occur within and between zones
- Design values do not include ambient light levels

ALL VALUES LISTED IN FOOTCANDLES

LIGHTING DESIGN - comparison

Primary zones:	Wonderland	Salem Proposed Design
GARAGE ROOF:	4 fc ave.	4 fc ave.
perimeter light poles	yes	no
light pole height	24'	20'
GARAGE INTERIOR:	7.5 fc ave.	2 fc ave.
light fixture distance from exterior opening	17'-0"	18'-0"

Note: Wonderland garage light levels are based upon field measurements taken in June 2013.

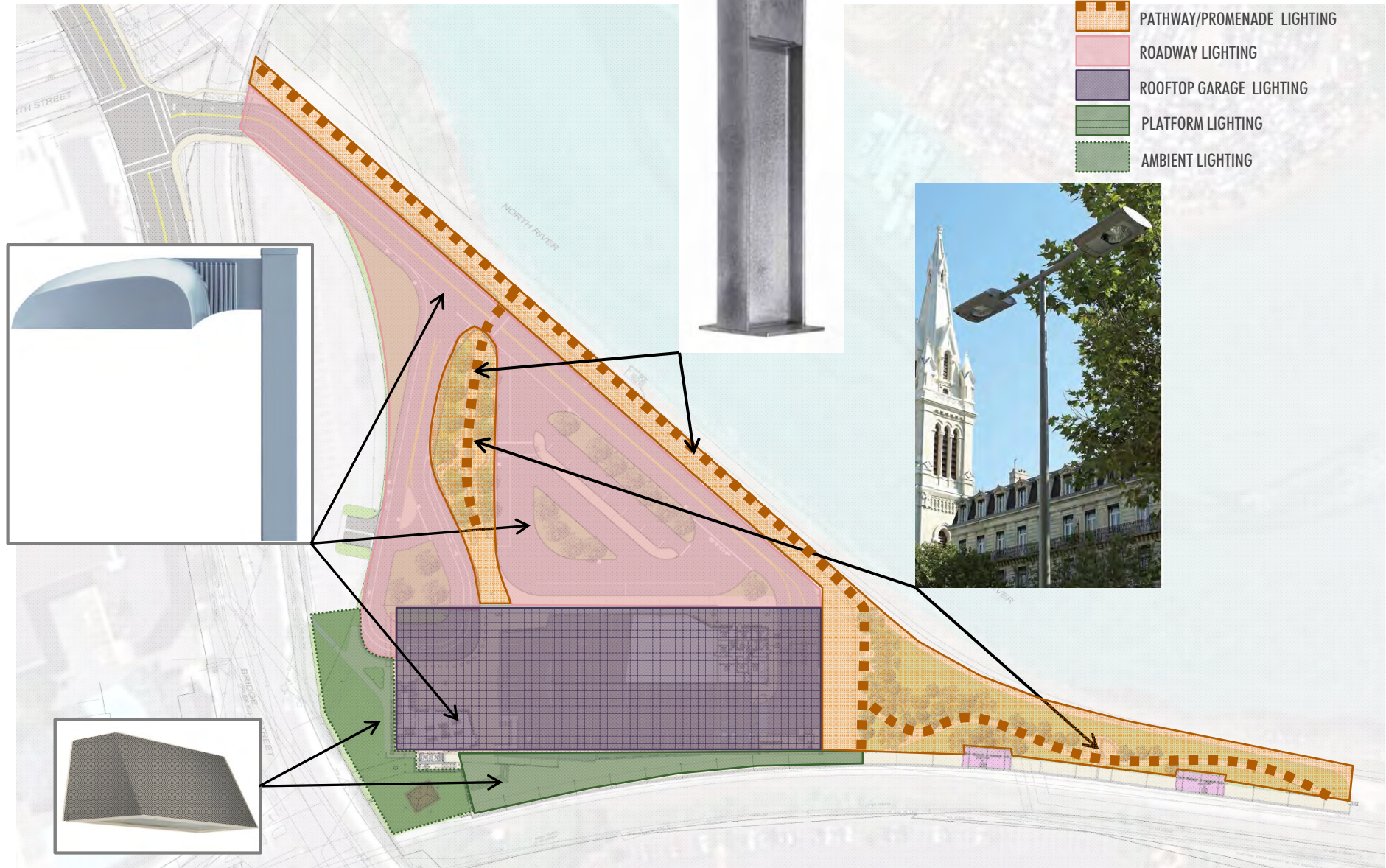


Wonderland garage roof



Wonderland garage interior

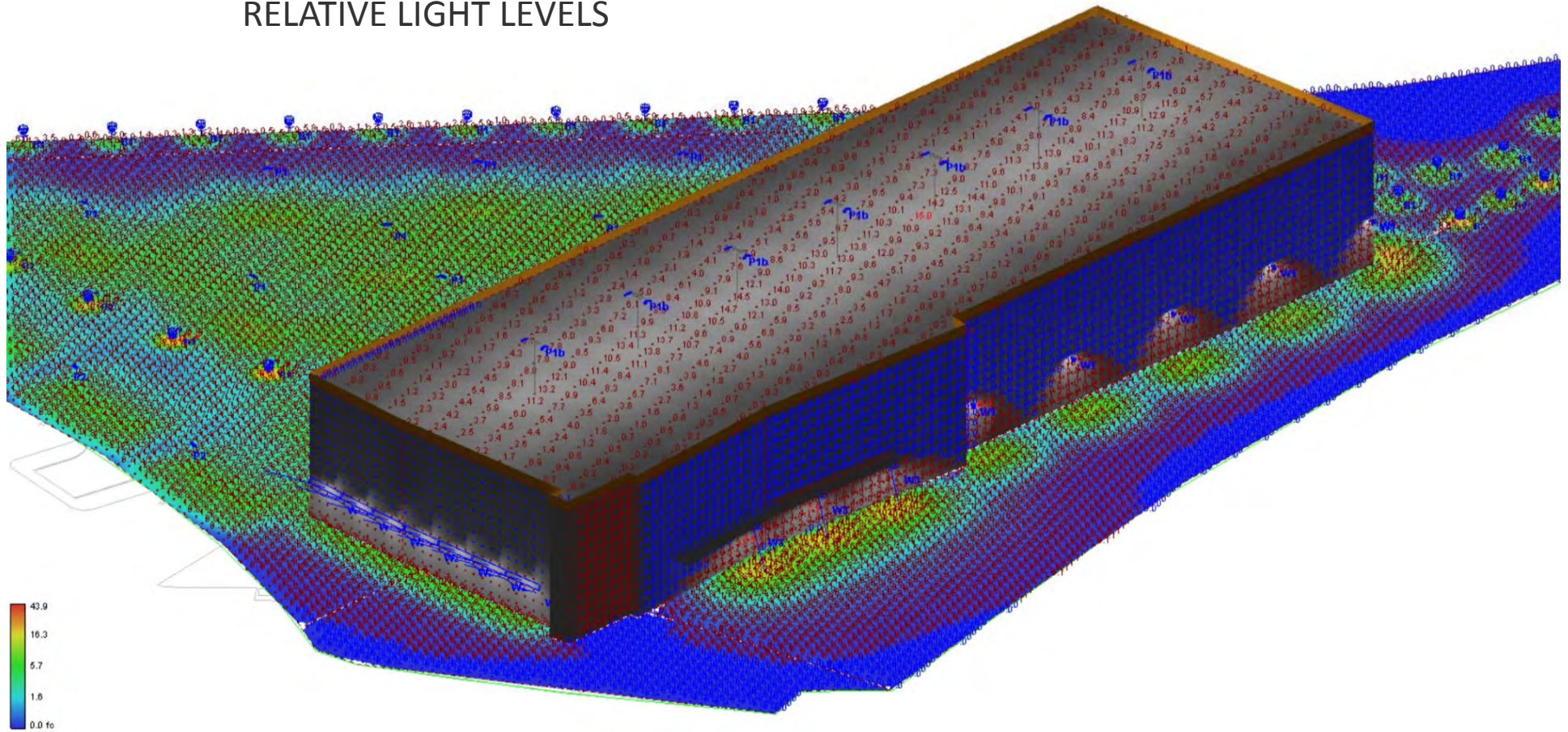
SITE LIGHTING ZONES



Site plan – PRIMARY FUNCTIONAL ELEMENTS

LIGHTING DESIGN - APPROACH

RELATIVE LIGHT LEVELS

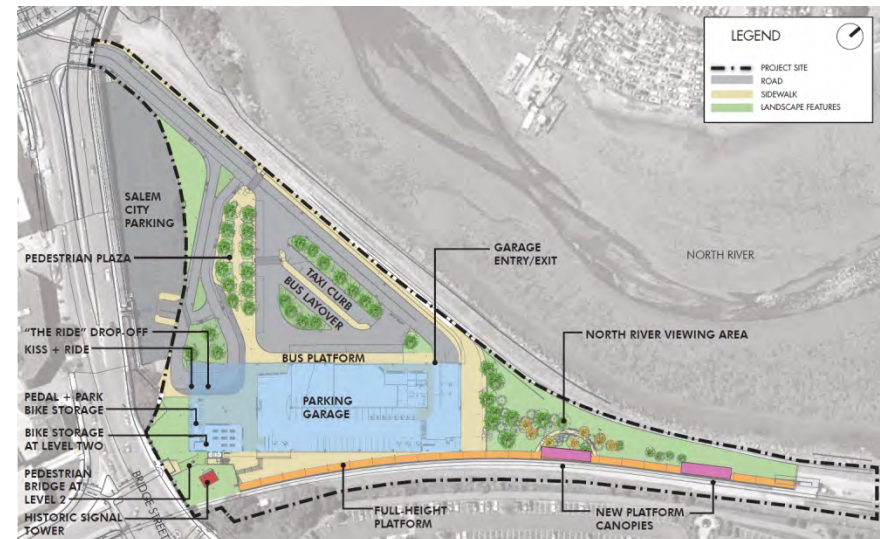
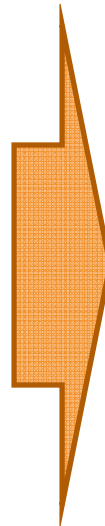
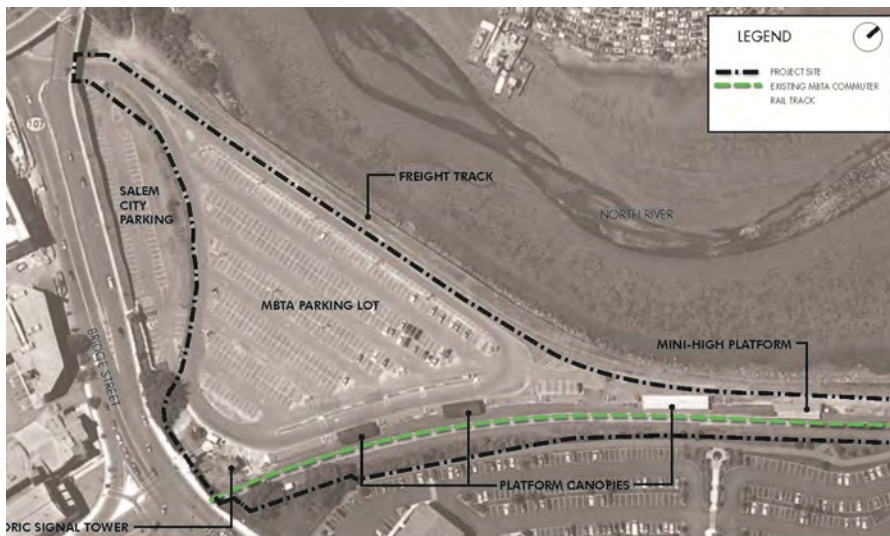


Phasing

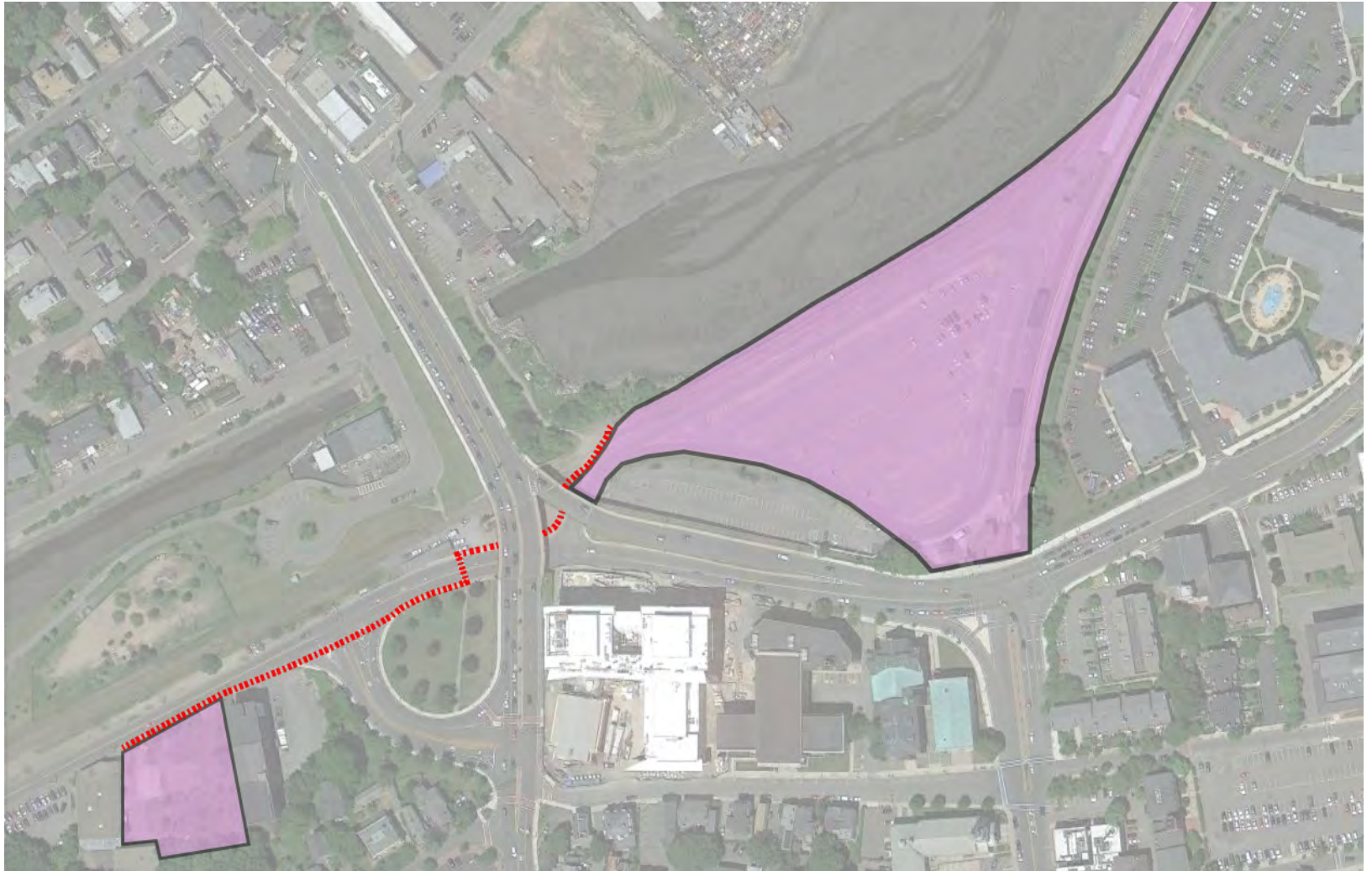
CONSTRUCTION SCHEDULE AND PHASING

Priorities:

- Safety
- Keep station open / maintain functionality of modes
- Minimize number of phase changes effecting public
- Cost & Schedule



REMOTE PARKING



APPROACH: **SAFELY** MAINTAIN SERVICES

Services to remain on-site during construction:

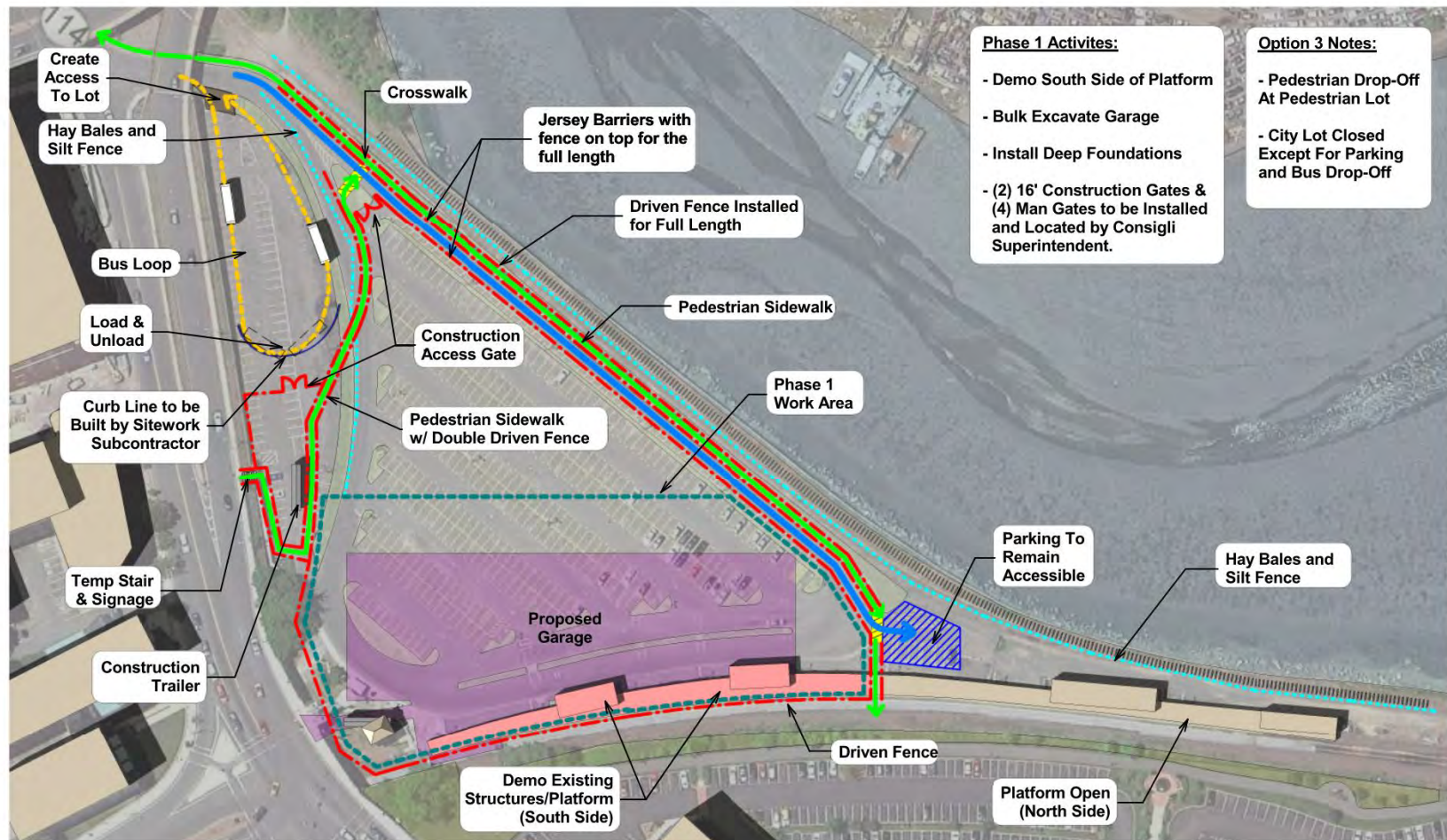
- Passenger Rail
- Buses
- HP parking, HP pickup/drop-off
- The RIDE pickup/drop-off
- (2) Pedestrian access points at Bridge and Washington
- (1) Bicycle access point at Bridge

Services to be relocated off-site during construction:

- Automobile parking
- Automobile pickup/drop-off
- Taxi stand

Construction phasing plans provided by Consigli Construction

CONSTRUCTION PHASING



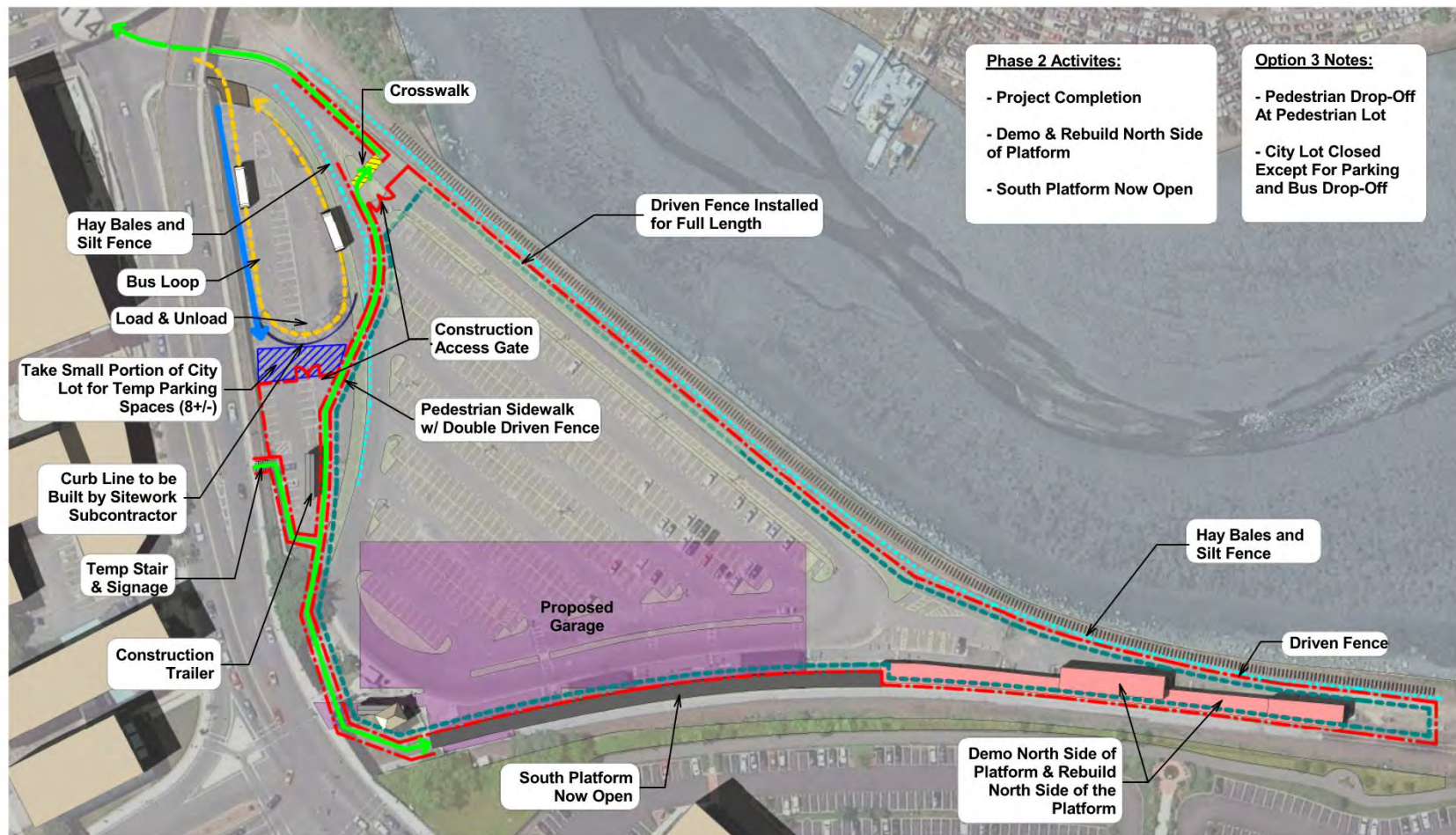
**Salem Station Improvements & Parking Garage
Site Logistics & Phasing
Phase 1: Spring - Winter**



6/5/2013 2:20:57 PM

Construction phasing plans provided by Consigli Construction

CONSTRUCTION PHASING



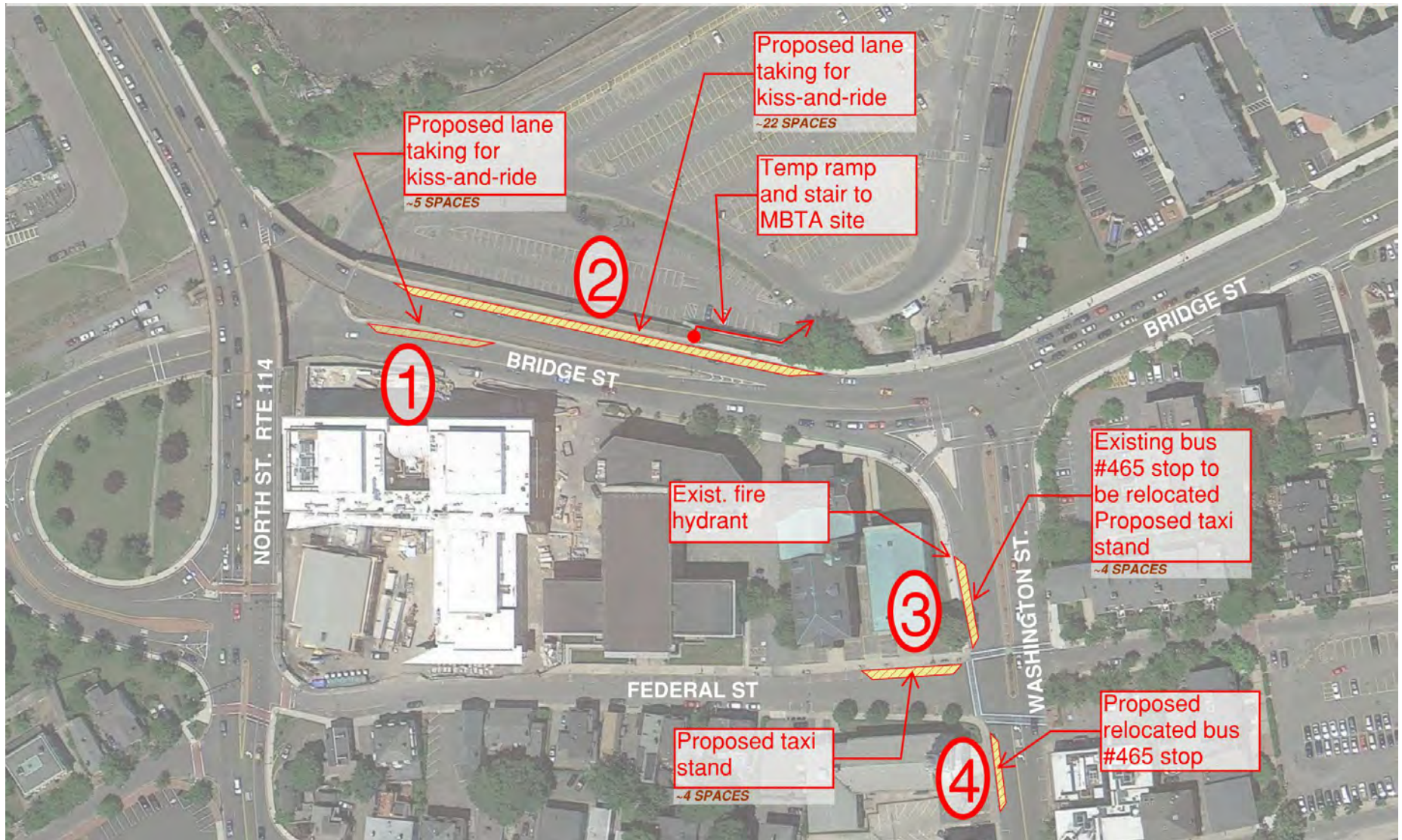
Salem Station Improvements & Parking Garage Site Logistics & Phasing Phase 2: Spring - Fall



6/5/2013 2:22:55 PM

Construction phasing plans provided by Consigli Construction

PROPOSED TAXI AND KISS & RIDE OPTIONS- OFFSITE



SALEM INTERMODAL STATION

June 19, 2013
Public Meeting

