

# SALEM INTERMODAL STATION

Public Meeting  
June 26, 2012



## JUNE 26, 2012 PUBLIC DESIGN PRESENTATION

- ✓ Purpose of Feb 16 discussion: *input on project function & features*
- ✓ Purpose of April 9 discussion: *input on building design strategies*
- Purpose of June discussion: *input on suggested design proposal*





# JUNE 26, 2012 PUBLIC DESIGN PRESENTATION

## Agenda:

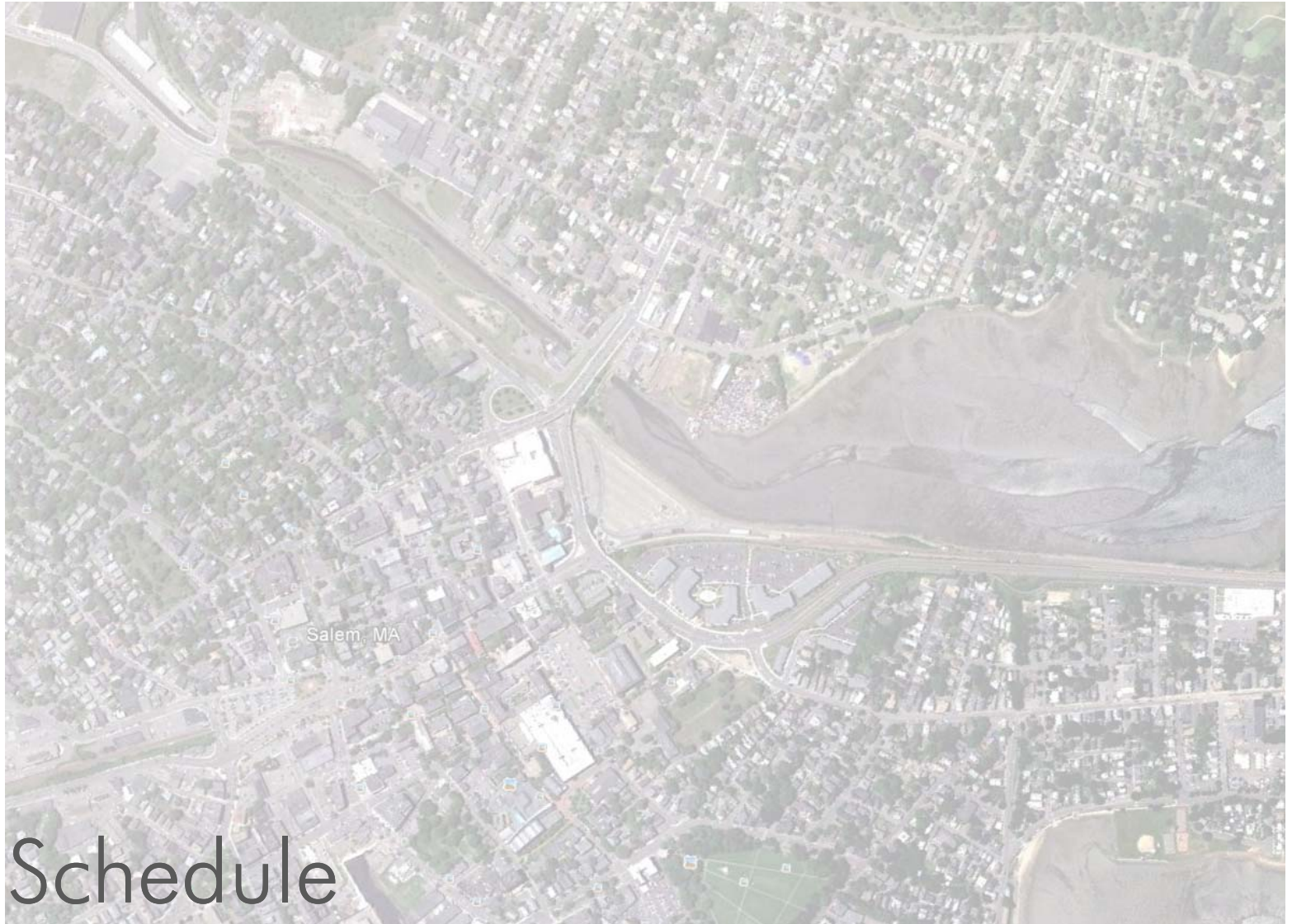
*Project Schedule*

*Public comment integration*

*Funding enhancements*

*30% design proposal*





# Schedule





## DESIGN:

- |                     |   |
|---------------------|---|
| ✓ Fall/Winter 2011: | Subsurface investigations                 |
| ✓ Feb 16, 2012:     | Initial public meeting - planning         |
| ✓ April 9, 2012:    | Second public meeting – design strategies |
| ○ June 26, 2012:    | Third public meeting – 30% design         |
| ○ September 2012:   | Fourth public meeting – 60% design        |
| ○ Winter 2012:      | Design complete                           |

## PERMITTING:

- |                  |                               |
|------------------|-------------------------------|
| ✓ June 15, 2012: | MEPA EENF filing              |
| ○ June 28, 2012: | MEPA scoping session (public) |
| ○ July 20, 2012: | MEPA comment period closed    |
| ○ Fall 2012:     | Chapter 91 filing & comment   |
| ○ Fall 2012:     | Local/City permitting process |

## CONSTRUCTION:

- ✓ Spring 2012: Limited archeology work on-site
- Fall/spring 2012: Detailed archeological survey
- Spring/summer 2013: Primary construction start
- Fall 2014: Substantial completion, garage/station open
- Winter 2014: Final completion, project complete

---

### Project schedule

MBTA Station Improvements and Parking Garage  
Salem, Massachusetts



**FENNICK | McCREDIE**  
architecture ltd

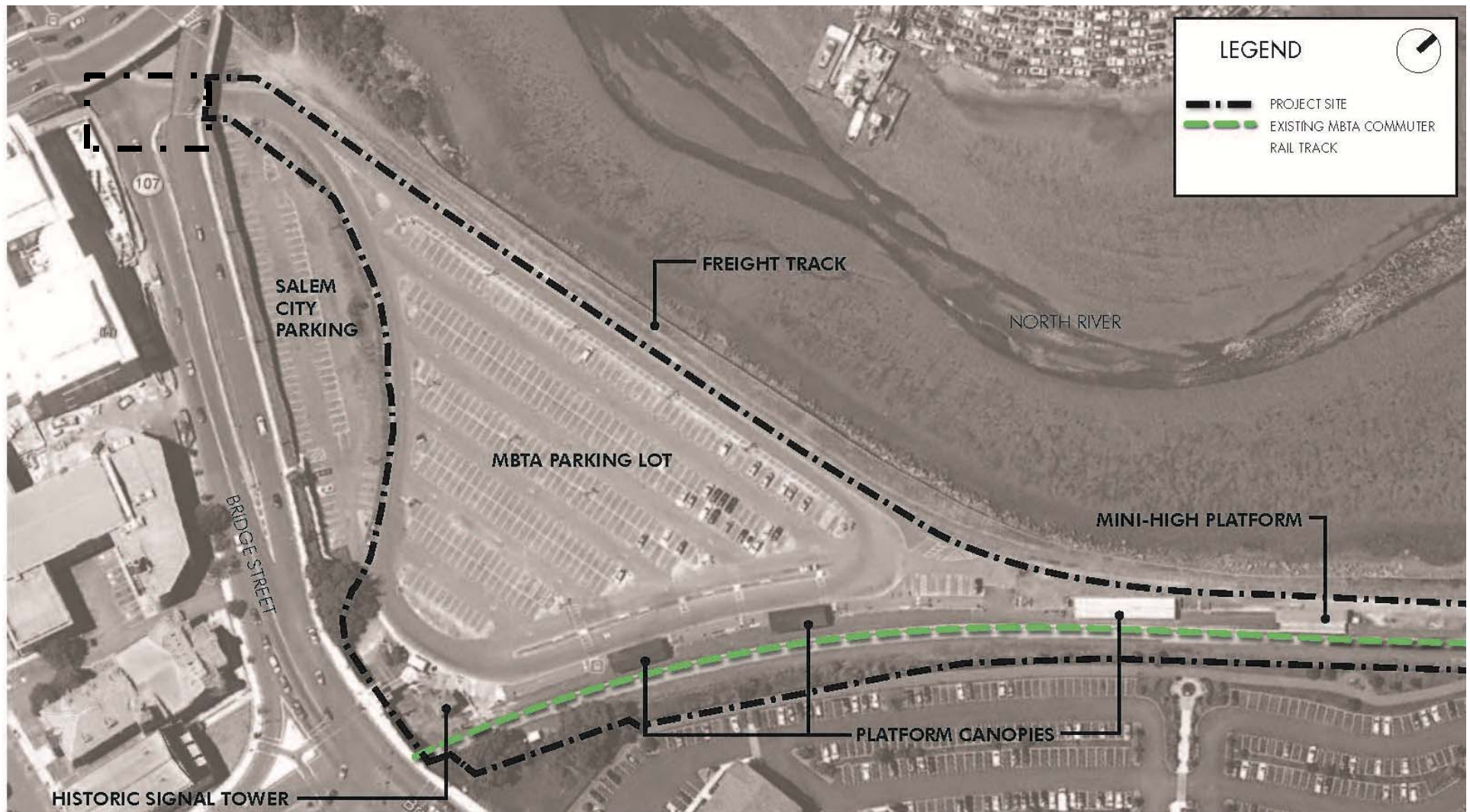




# Project / public process overview

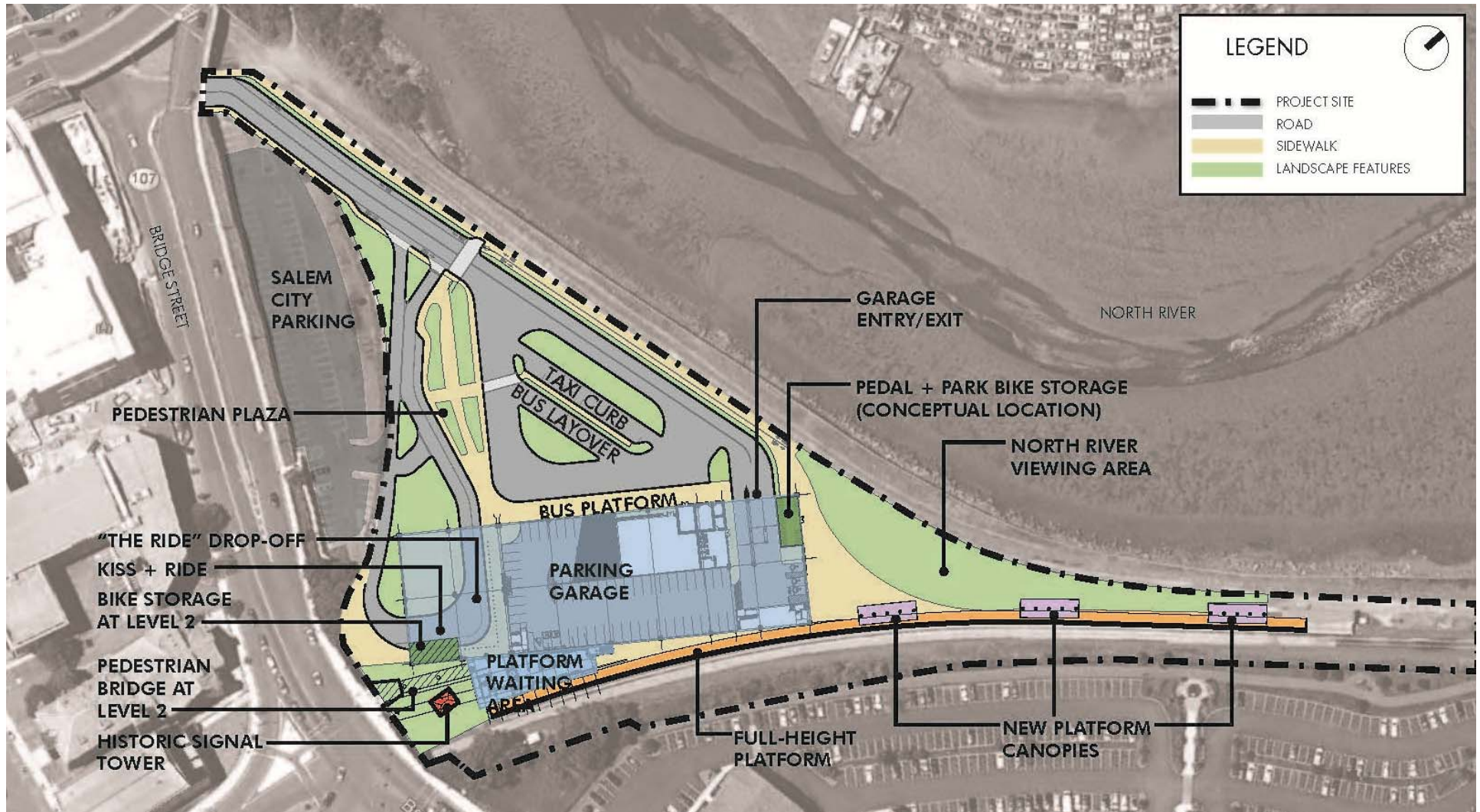


## EXISTING CONDITIONS



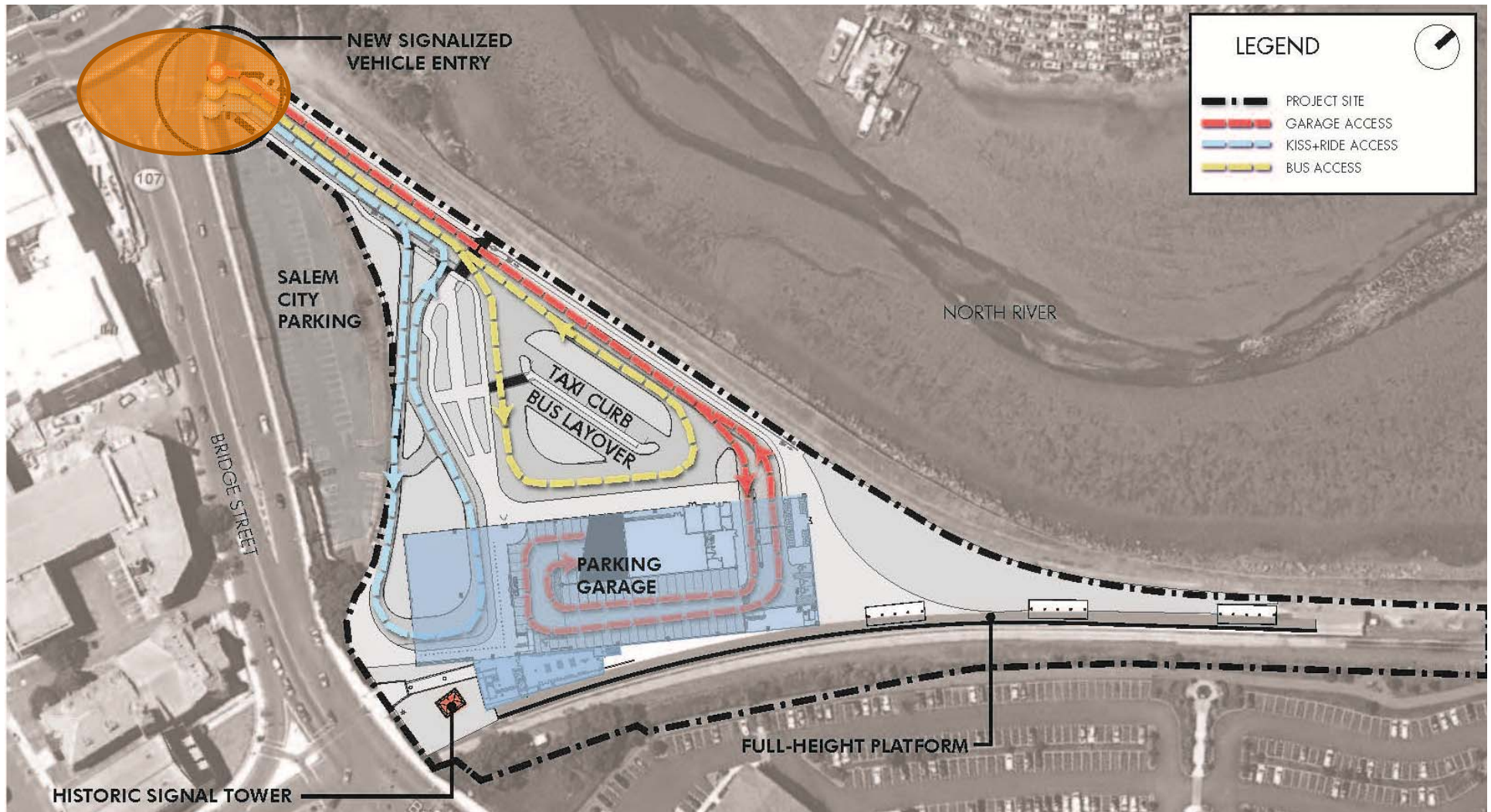


## PRIMARY FUNCTIONAL ELEMENTS



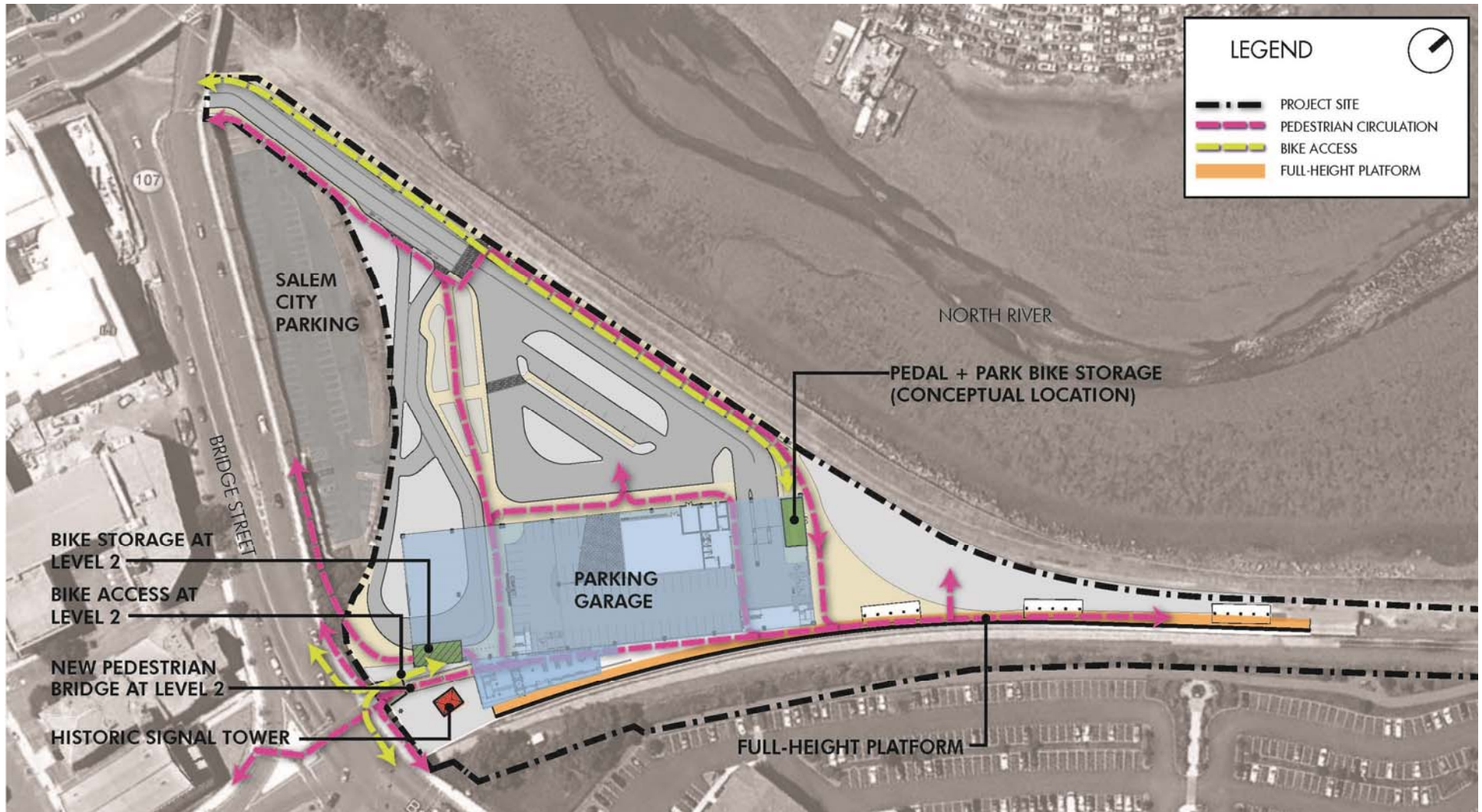


# VEHICULAR CIRCULATION

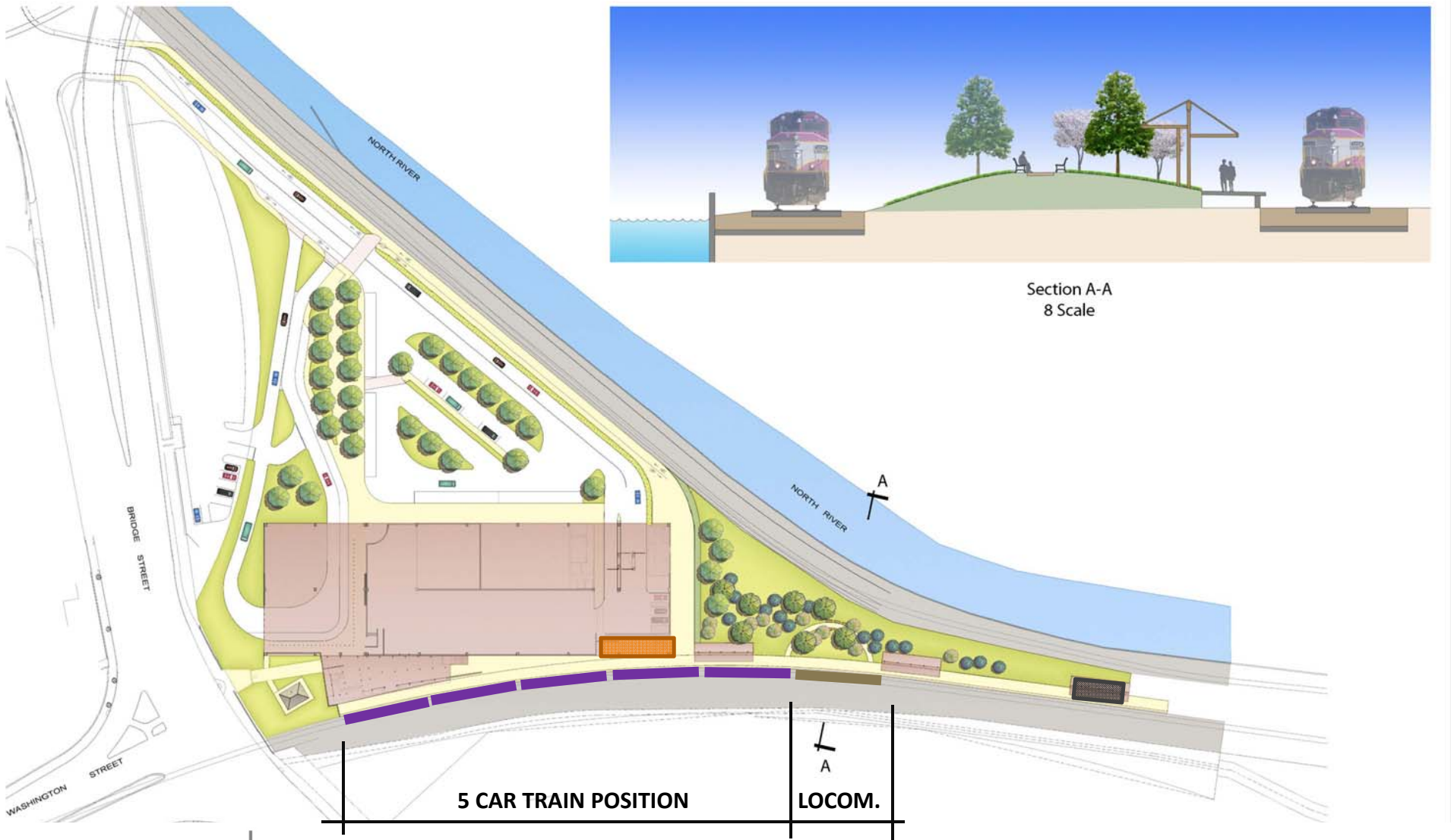




# PEDESTRIAN / BIKE CIRCULATION



# CONCEPTUAL LANDSCAPE APPROACH

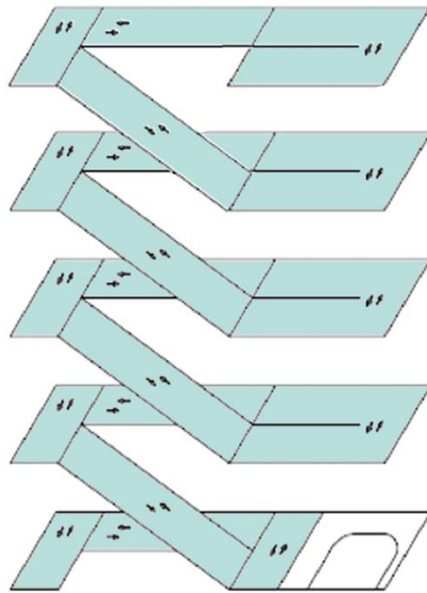


MBTA Station Improvements and Parking Garage  
Salem, Massachusetts

 Massachusetts Bay  
Transportation Authority

**FENNICK | McCREDIE**  
architecture ltd



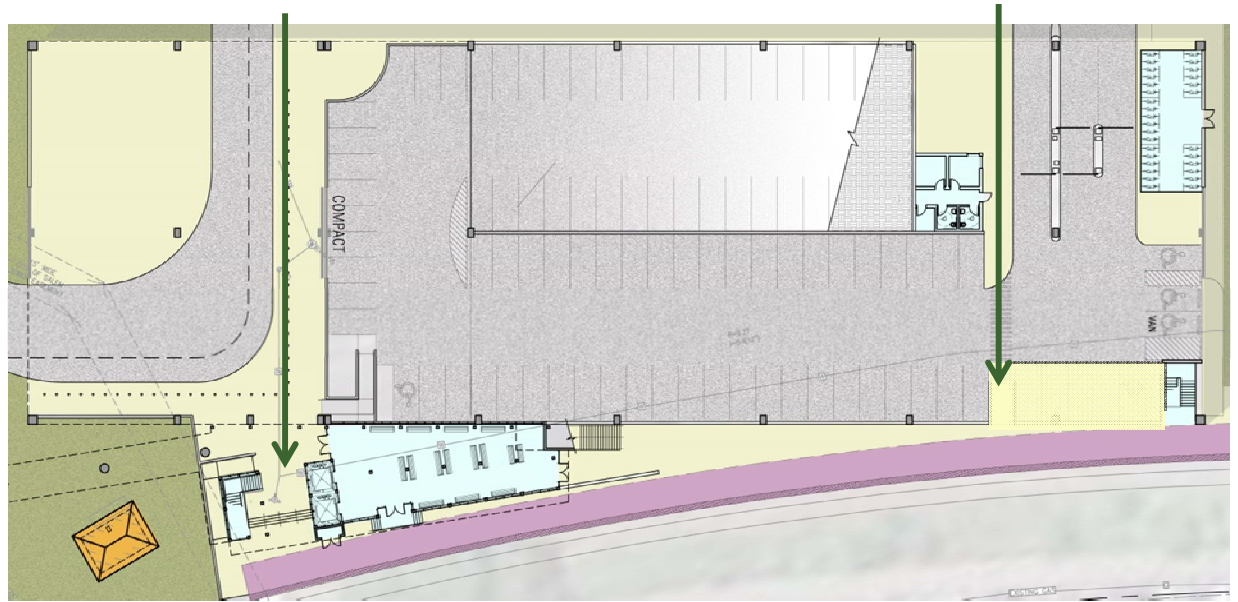


CIRCULATION DIAGRAM

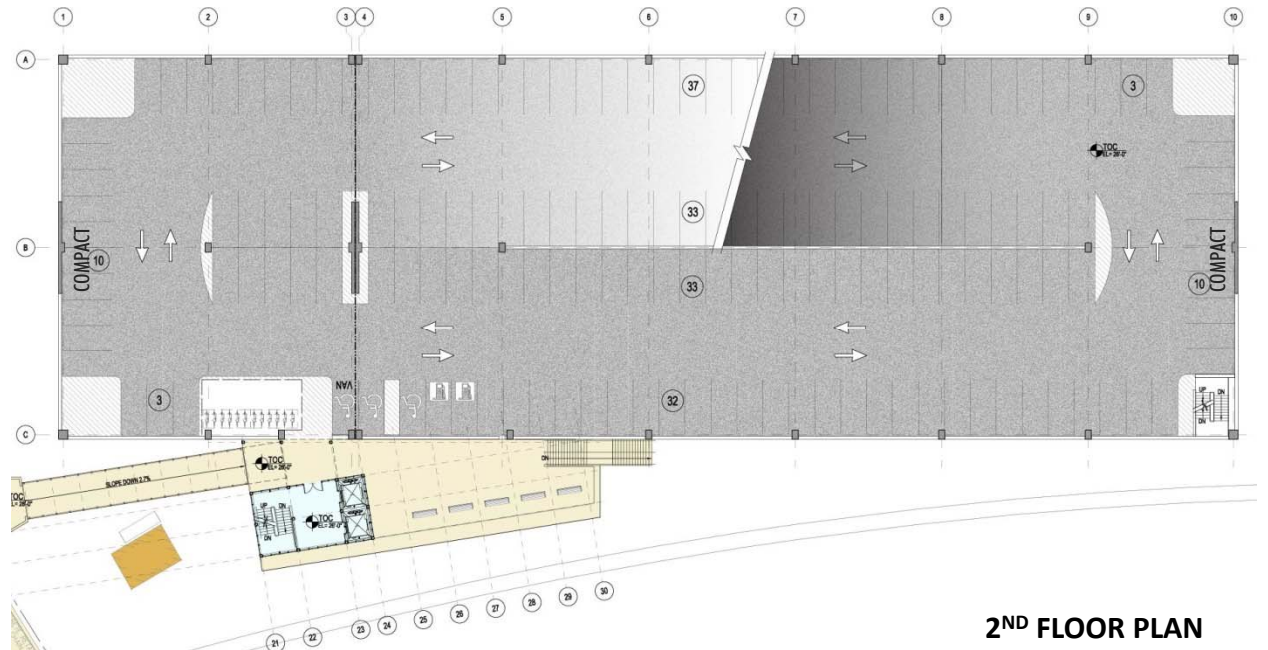
CAR COUNT TABLE

LEVEL	CARS	TOTAL
G	109	109
2ND	161	270
3RD	164	434
4TH	164	598
5TH	117	715

*ESTIMATED TOTAL PARKING SPACES: 700 - 715*

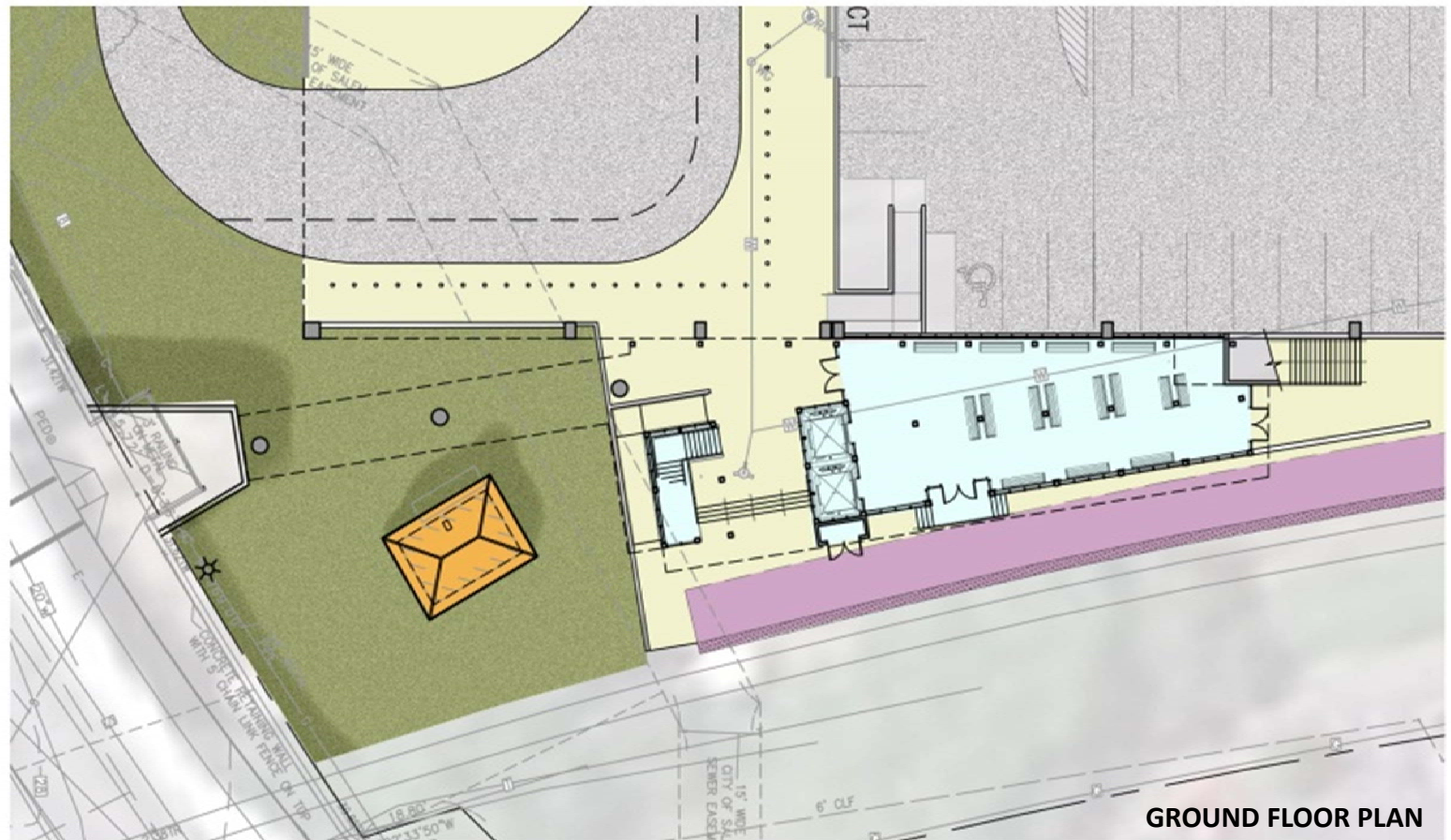
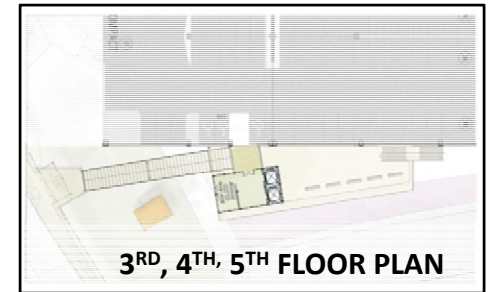
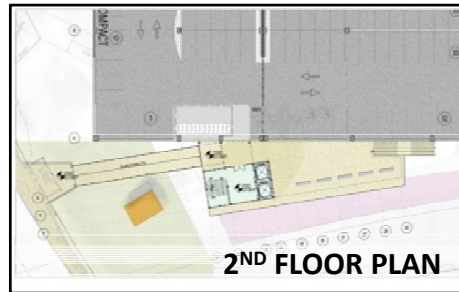


GROUND FLOOR PLAN



2<sup>ND</sup> FLOOR PLAN  
(upper floors sim.)





## Enlarged plans - WAITING AREA

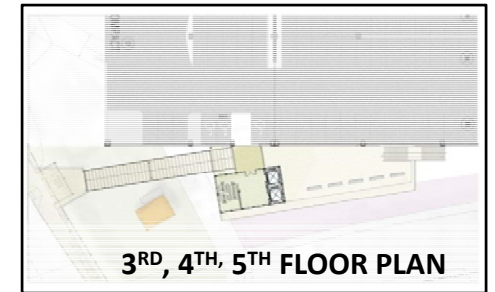
MBTA Station Improvements and Parking Garage  
Salem, Massachusetts



**FENNICK | McCREDIE**  
architecture ltd







**2<sup>ND</sup> FLOOR PLAN**





# DESIGN APPROACH: BALANCE OR EMPHASIS

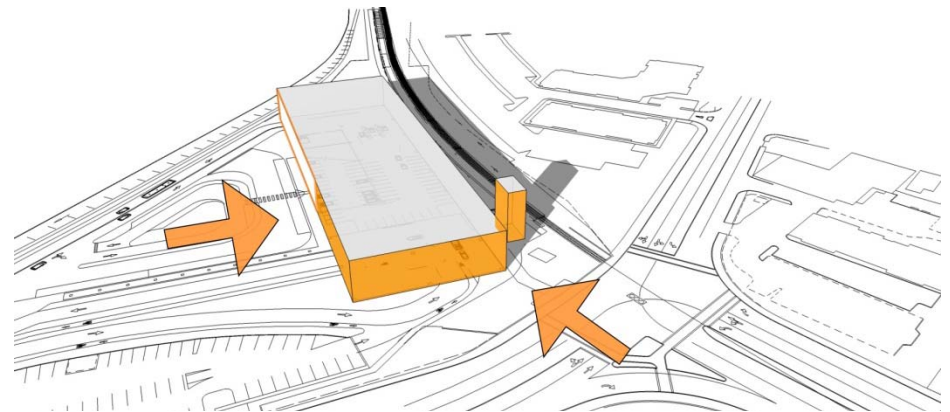
## 1. WEATHER PROTECTION

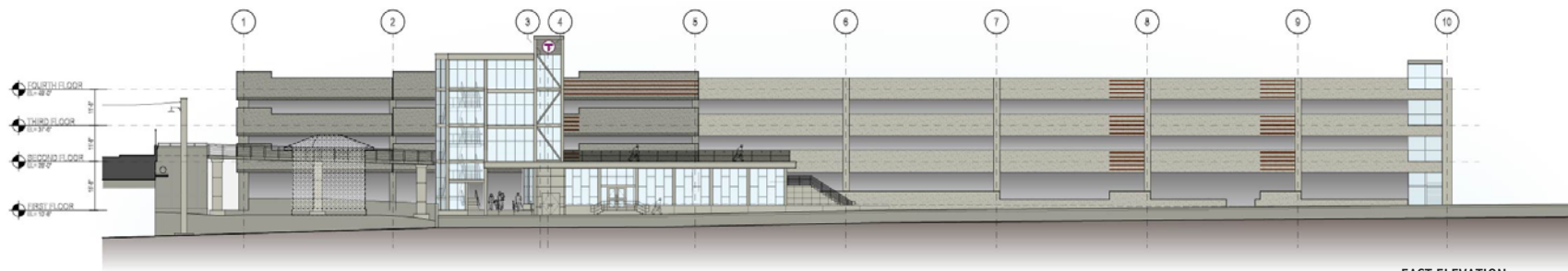
- Canopies
- Enclosed lobby
- Heat
- Views



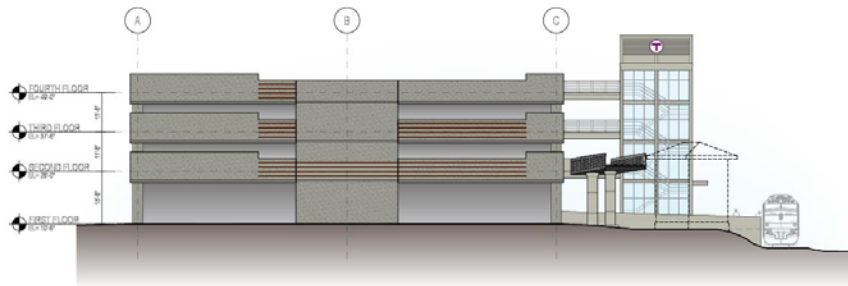
## 2. CONTEXT SENSITIVE

- Scale
- Color
- Material
- Texture

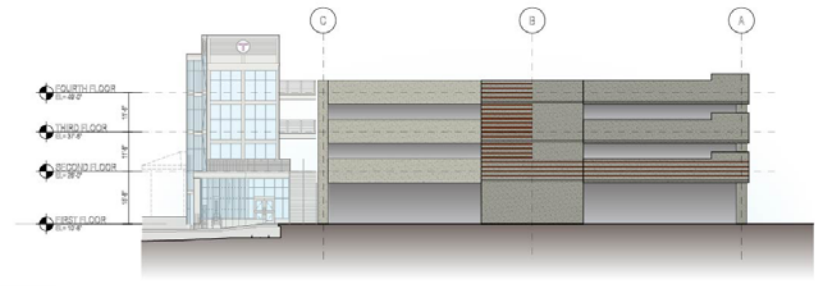




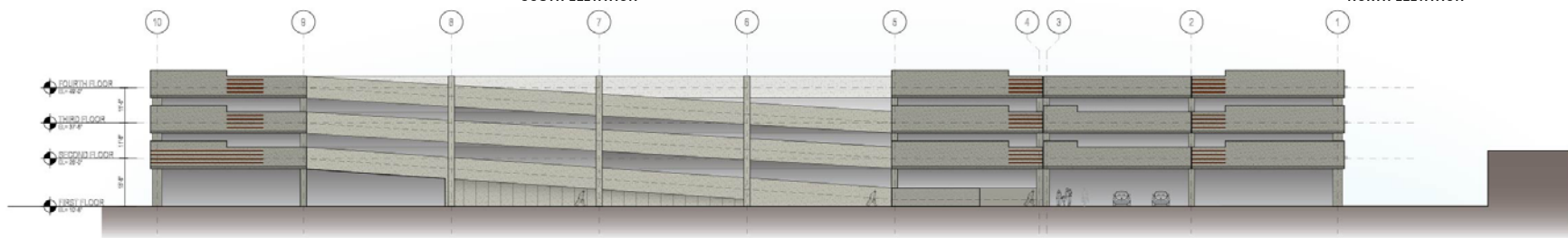
EAST ELEVATION



SOUTH ELEVATION



NORTH ELEVATION



WEST ELEVATION

## A1: Connectivity- ELEVATIONS

MBTA Station Improvements and Parking Garage  
Salem, Massachusetts



**FENNICK | McCREDIE**  
architecture ltd



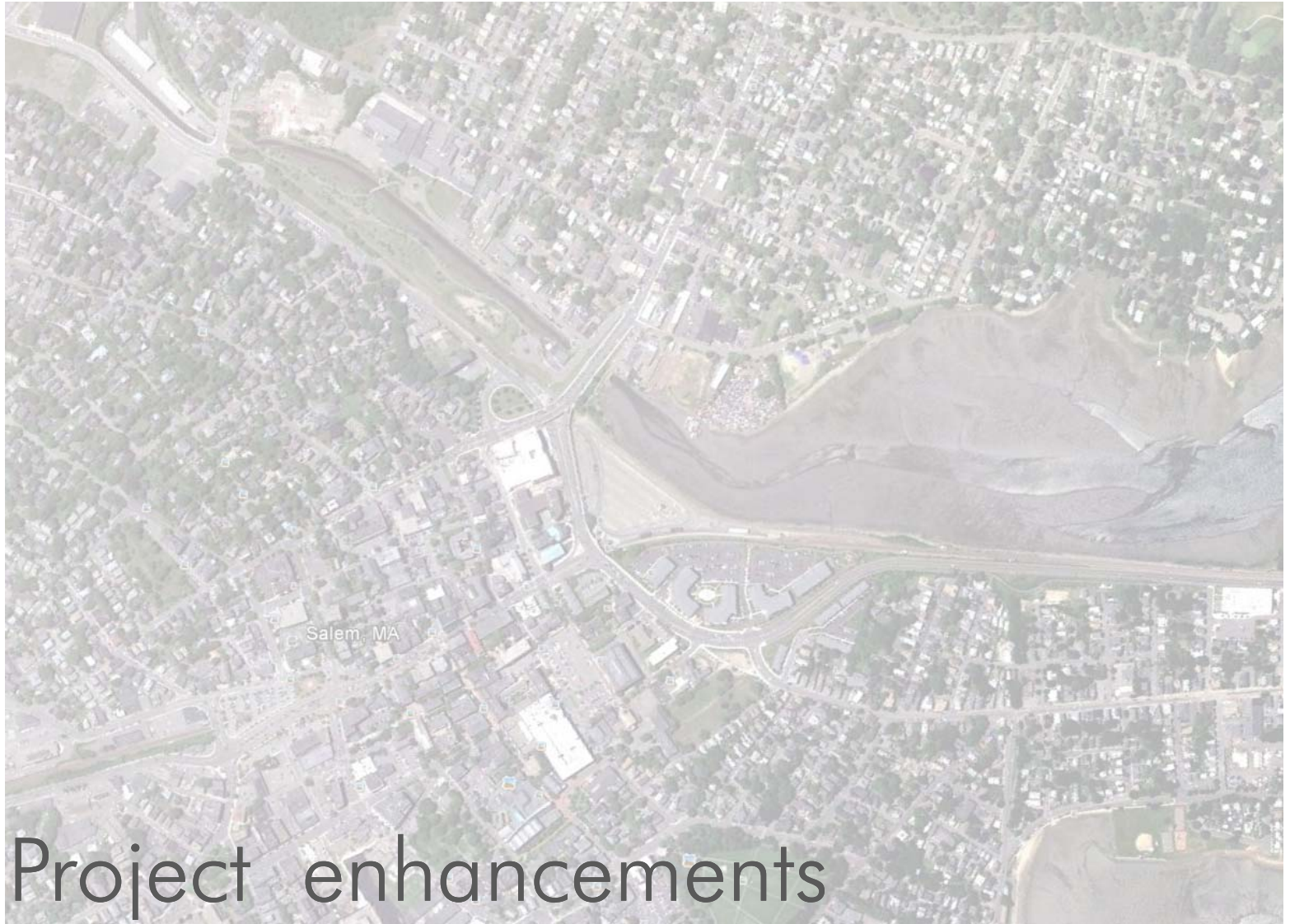
## PUBLIC PROCESS – EXECUTIVE SUMMARY

Things that in general are working....

- General site layout / location of project elements
- Functional aspects of site circulation, movement, safety
- Enclosed waiting location and layout
- Full height platform
- Pedestrian bridge from Washington street

Things that need work....

- Architectural expression
- Weather protection
- Number of parking spaces



# Project enhancements



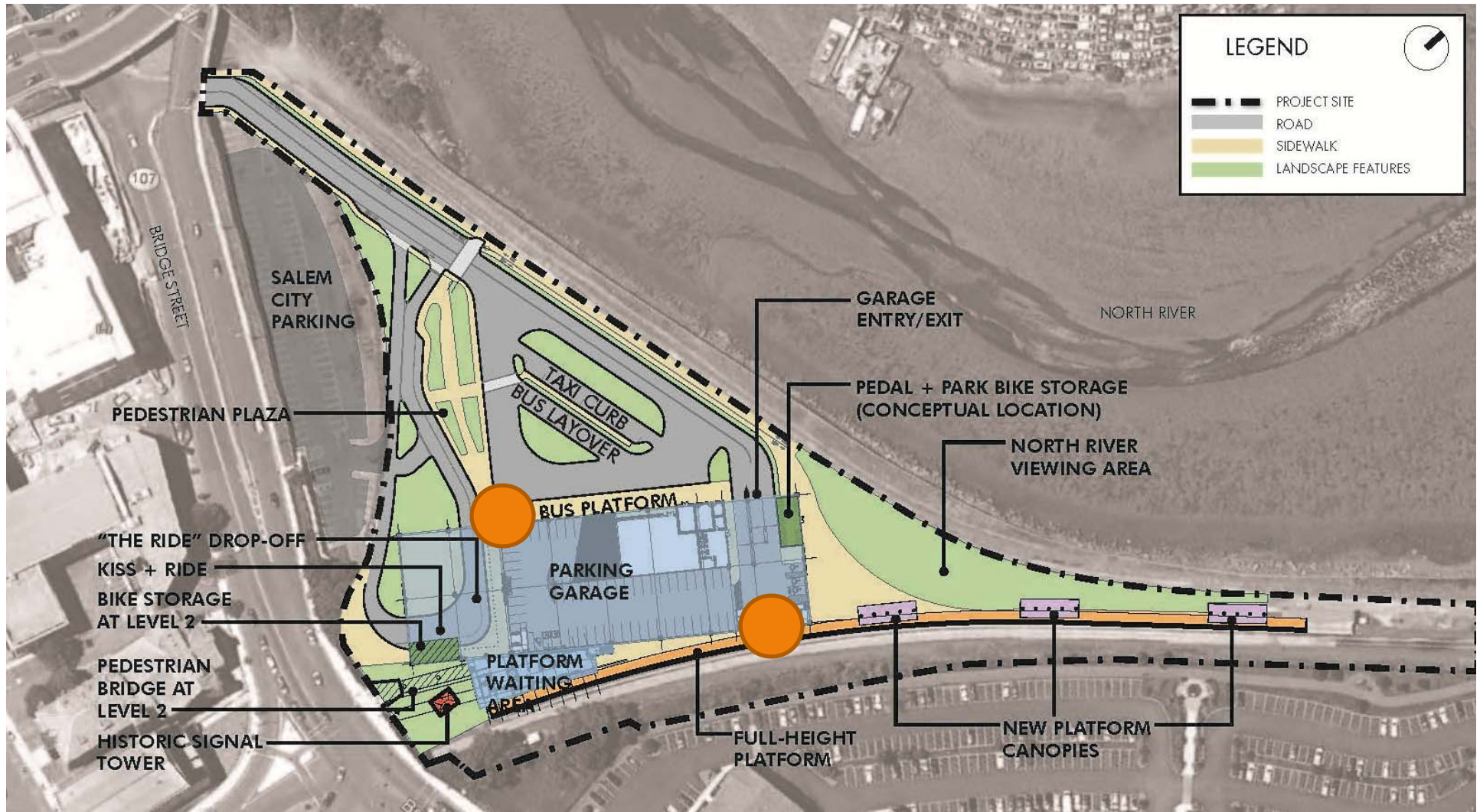


## ADDDITIONAL FUNDING PROVIDED FOR:

1. Weather protection  
*... Added protection at bus curb and north platform end.*
2. Stabilization of historic signal tower  
*... Exterior rehabilitation per Secretary of Interior guidelines*
3. Additional parking level  
*... Increase from 550 to 715 parking spaces.*
4. Increased architectural treatment  
*... Redesign of portion facing historic Salem.*

## ENHANCED WEATHER PROTECTION

● Additional sheltered waiting





## SIGNAL TOWER STABILIZATION

### Intent:

Exterior stabilization for public safety.

### Approach:

Exterior rehabilitation in compliance with Secretary of the Interior standards.

### Process:

Conditions survey and historical research, followed by MHC consultation & public input.

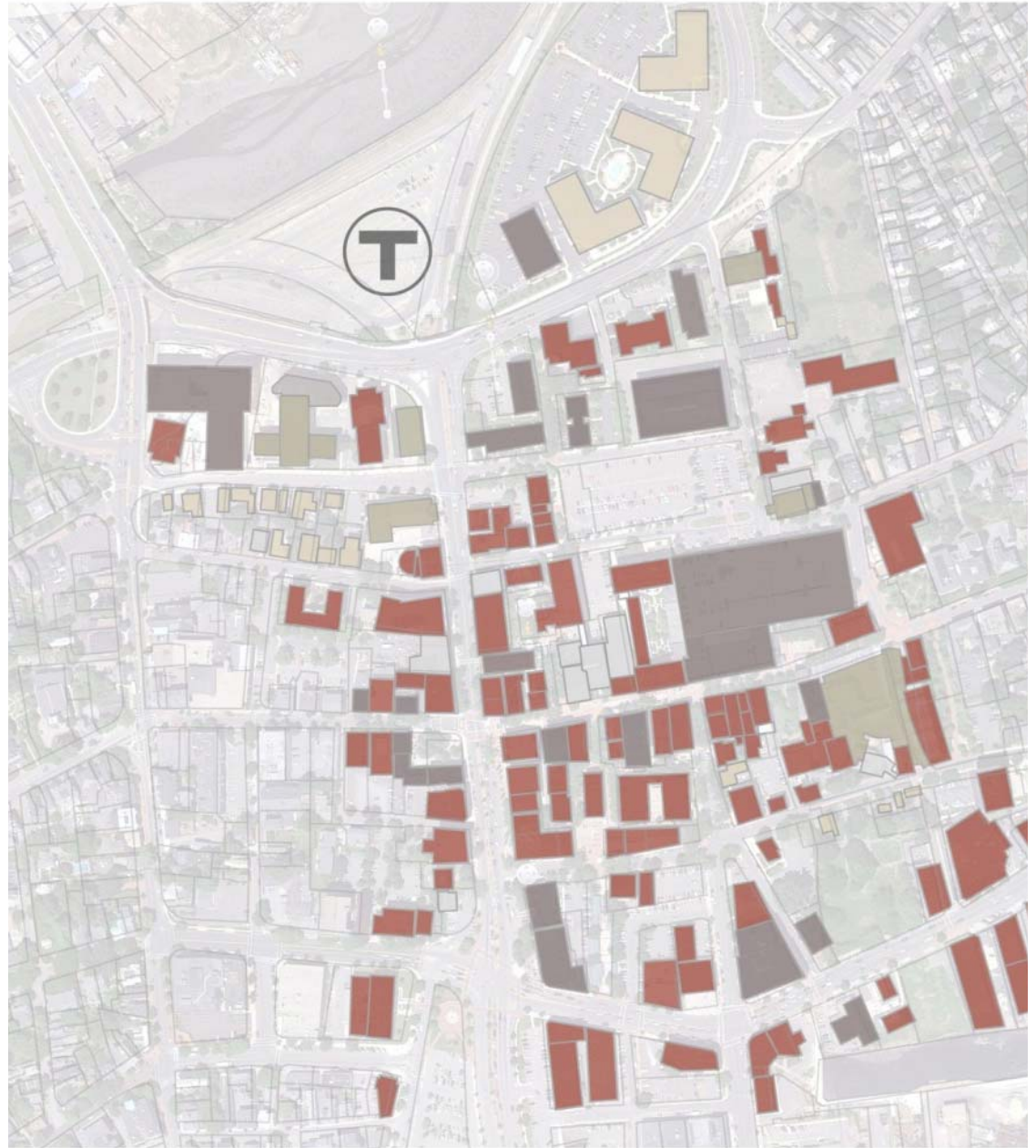
### Schedule:

Concurrent with station construction



## Design Guidelines

- Scale
- Materiality
- Texture





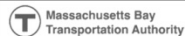
# ARCHITECTURAL EXPRESSION

EXISTING MIXED  
MATERIAL  
STRUCTURES  
AND PATTERNING



Urban character — use of mixed materials

MBTA Station Improvements and Parking Garage  
Salem, Massachusetts



**FENNICK | McCREDIE**  
architecture ltd





LOWELL GARAGE + RETAIL





HAVERHILL INTERMODAL CENTER





MBTA Station Improvements and Parking Garage  
Salem, Massachusetts



Massachusetts Bay  
Transportation Authority

**FENNICK | McCREDIE**  
architecture ltd





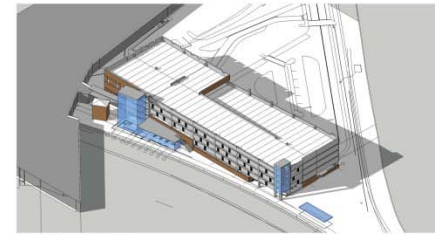
## ARCHITECTURAL TREATMENT



WASHINGTON ST. VIEW



BRIDGE ST. VIEW



NE ISOMETRIC



NW ISOMETRIC



SW ISOMETRIC



SE ISOMETRIC





MBTA Station Improvements and Parking Garage  
Salem, Massachusetts



**FENNICK | McCRENIE**  
architecture ltd









# SALEM INTERMODAL STATION

Public Meeting  
June 26, 2012

