

August 14, 2015

City of Salem
Purchasing Office
93 Washington Street
Salem, MA 01970

TO: Prospective Bidders

RE: Addendum No. 1, BID # R-11
City of Salem, Washington Street and Dodge Street Utility Replacement Project

ADDENDUM NO. 1

This Addendum No. 1 to the above referenced projects modifies, corrects and/or supplements the original Contract Documents dated August 2015 and shall become part of the Contract Documents.

All bidders are required to acknowledge receipt of the Addendum in Section 00300 – FORMS FOR GENERAL BID; failure to do so may subject the bidder to disqualification.

This Addendum consists of one (1) page, with five (5) pages of Attachments, including four (4) drawings.

Changes to Drawings:

Replace Sheet C-5 with attached Sheet C-5A
Replace Sheet C-6 with attached Sheet C-6A
Replace Sheet C-7 with attached Sheet C-7A
Replace Sheet D-7 with attached Sheet D-7A

Changes to Bidding and Contract Documents:

Section 00300 – FORMS FOR GENERAL BID

Replace Page 00300-13 with attached Page 00300-13A

Pre-Bid Conference Information:

An optional Pre-Bid conference was held on August 12, 2015 at 9:00 a.m. in the third floor conference room of the City Hall Annex, 120 Washington Street, Salem, MA. Names and contact information for attendees of the pre-bid conference are listed on the attached Sign-In Sheet.

Overview: Andrew Shapiro (of the City of Salem) and Bill Ross (of New England Civil Engineering) described the project scope of work and the information provided on the contract drawings and attached to the contract specifications. No questions were raised that required written response or clarification.

Alternate Bid No. 1:

Item No.	Unit	Description	Estimated Quantity	Unit Price (In Figures)	Extended Total (In Figures)
61	LF	Assist NGrid with PE Gas Pipe Installation - Excavation, Coordination, Backfill	700		
		_____ Dollars			
		_____ Cents		\$ _____	\$ _____
		Per Linear Foot			

Total Amount of Alternate Bid No. 1: (Item 61) inclusive:

\$ _____

(Amount in figures)

(Amount in words)**Alternate Bid No. 2:**

Item No.	Unit	Description	Estimated Quantity	Unit Price (In Figures)	Extended Total (In Figures)
62	EA	Install New NGrid Electric Manholes, Materials by Others	2		
		_____ Dollars			
		_____ Cents		\$ _____	\$ _____
		Per Each			
63	LF	Install New NGrid Conduit Duct Bank, Materials by Others	550		
		_____ Dollars			
		_____ Cents		\$ _____	\$ _____
		Per Linear Foot			

Total Amount of Alternate Bid No. 2: (Items 62 through 63) inclusive:

\$ _____

(Amount in figures)

(Amount in words)

Size	Intermediate	Base
3"	UKSE	UK4E
4"	UKSF	UK4F
5"	UKSG	UK4G
6"	UKSH	UK4H

Table 3 - Conduit Spacer Std Item Numbers

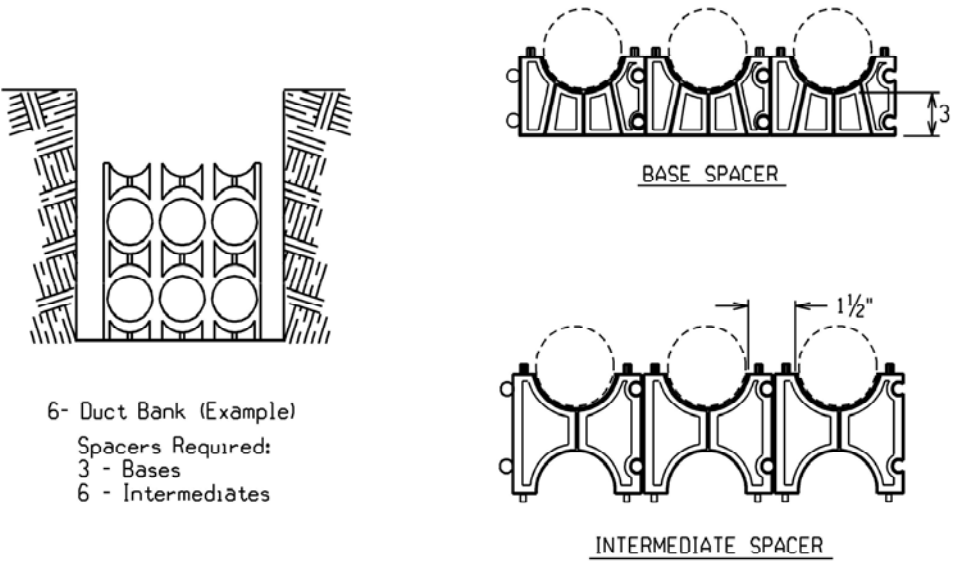


Figure 6

32.4.20 Ductbank Face (in Manholes)

The spacing is increased at the manhole face to allow the cables within the ducts to enter the manhole freely without being too close to the cables from the adjacent ducts and to allow for the use of bell end conduit.

Use the following table and Figure 7 as a guideline for installing ducts at the manhole face:

Spacing between conduits (S)	6" Conduit	5" Conduit	4" Conduit
Spacing between conduit and edge of ductbank (E)	9"	9"	8"

Table 4 - Spacing at Ductbank Face (in Manholes)

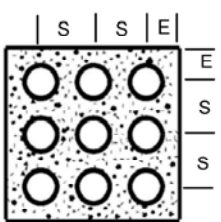
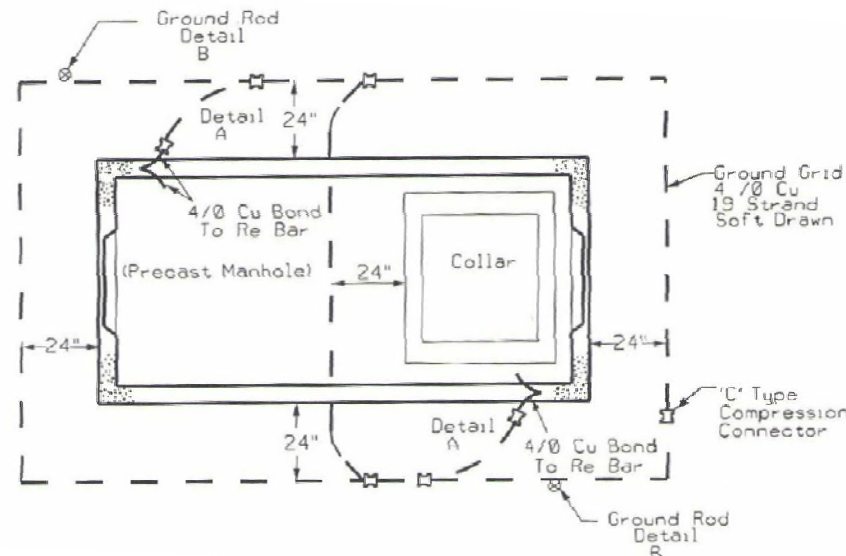


Figure 7

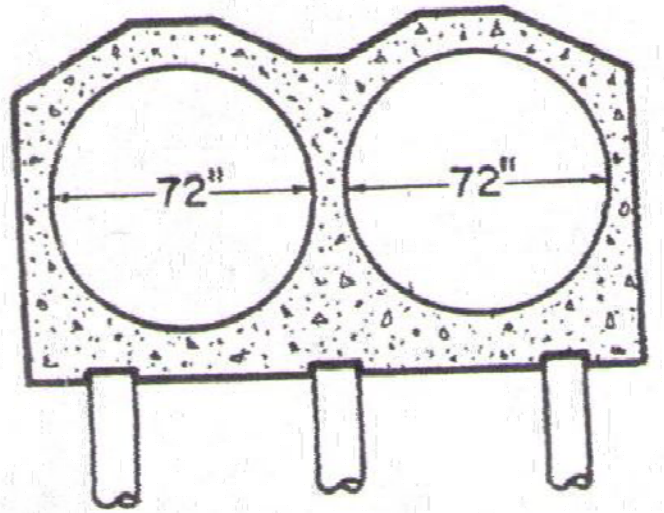
CONDUIT			
nationalgrid	UNDERGROUND CONSTRUCTION STANDARD	PAGE NUMBER	ISSUE
		32-3	7/08

NOTE:
CONDUITS IN DUCT BANK TO BE ENCASED IN CONCRETE
AND DETECTABLE WARNING TAPE AS DIRECTED



NGRID MANHOLE GROUND GRID

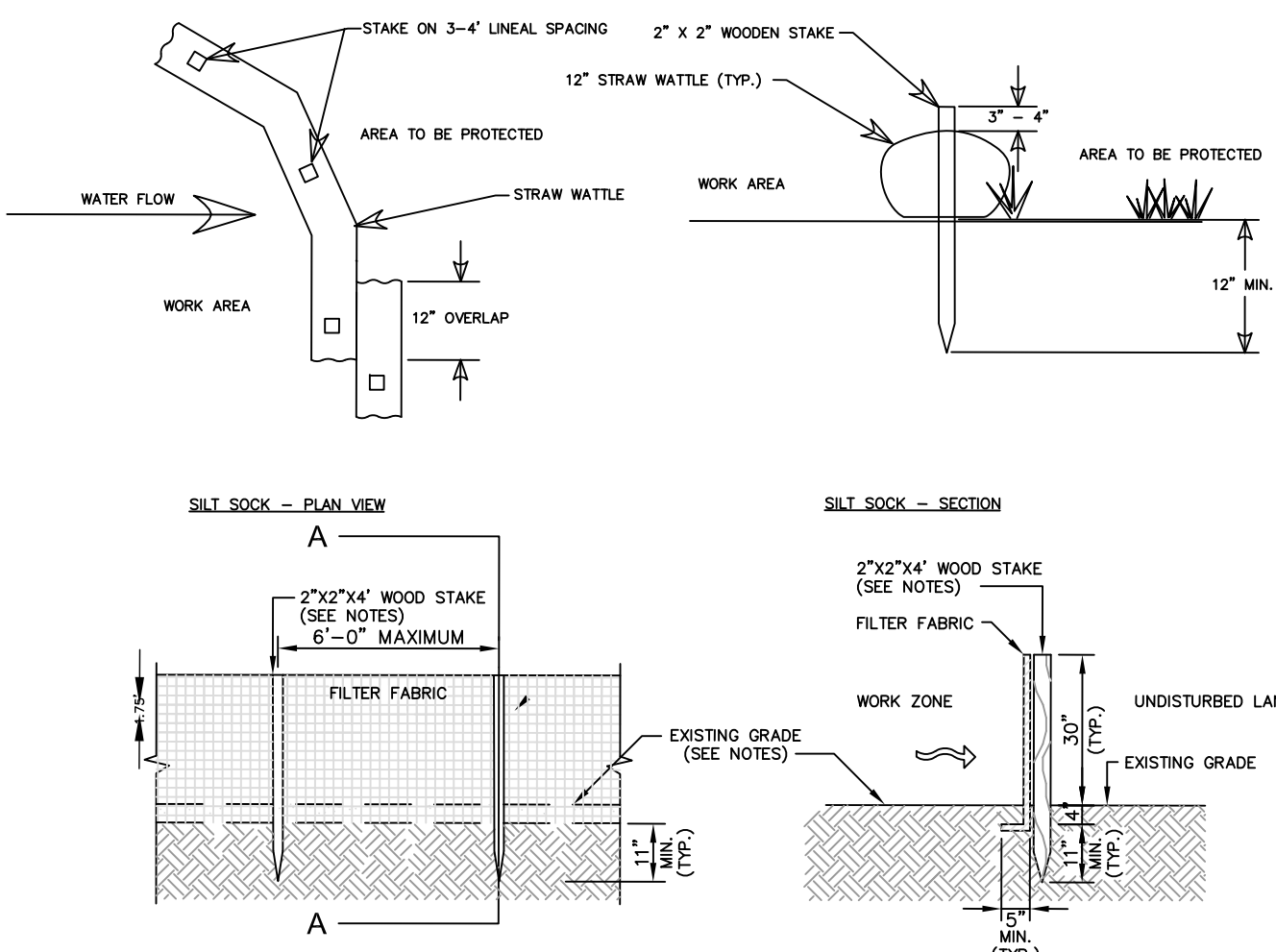
NOT TO SCALE



SECTION A

SOUTH RIVER CONDUIT CROSS SECTION DETAIL

NOT TO SCALE
SCHEMATIC ONLY, FOR REFERENCE.
TWIN CONCRETE PIPES ON TIMBER PILES



NOTES:

- CONTRACTOR TO INSTALL 12-INCH STRAW WATTLES OR SILT FENCE AS DIRECTED AND APPROVED BY LOCAL CONSERVATION COMMISSION
- FABRIC FOR FENCES TO BE UV RESISTANT POLYPROPYLENE WITH A MINIMUM WEIGHT OF 2.5 OZ/S.Y. TUBULAR BLACK POLYPROPYLENE FOR STRAW WATTLES SHALL BE PHOTO DEGRADABLE.
- FABRIC TO BE ATTACHED TO STAKES WITH STAPLES.
- HAY BALES, WHERE USED, SHALL BE SALT MARCH HAY AS APPROVED BY LOCAL CONSERVATION COMMISSION.
- WHERE HAY BALES ARE USED, TRENCH A MINIMUM OF 4" INTO EXISTING GRADE.
- A MINIMUM OF (2) WOODEN OR METAL STAKES PER HAY BALE. DRIVE STAKES A MINIMUM OF 12" INTO GROUND.
- STRAW MATERIAL TO BE DISPERSED ON SITE OR HAULED OFFSITE AND DISPOSED AS DETERMINED BY THE ENGINEER.
- CONTRACTOR TO INSTALL GEOTEXTILE (SILT SACK) IN ALL CATCH BASINS PRIOR TO EXCAVATION.
- ALL CONSTRUCTION DEWATERING MUST BE TREATED WITH A FILTRATION DEVICE (DIRTBAQ) AND/OR SEDIMENTATION TANK OR APPROVED TREATMENT DEVICE PRIOR TO DISCHARGE UPGRADIENT OF OTHER EROSION AND SEDIMENTATION DEVICES AND CONTROLS.
- SEDIMENTATION AND FLOATABLE DEBRIS BARRIER TO BE SIZED AND MAINTAINED TO ACCOMMODATE VARIED WATER LEVELS IN ADJACENT WATER BODIES.

EROSION AND SEDIMENTATION BARRIER

NOT TO SCALE

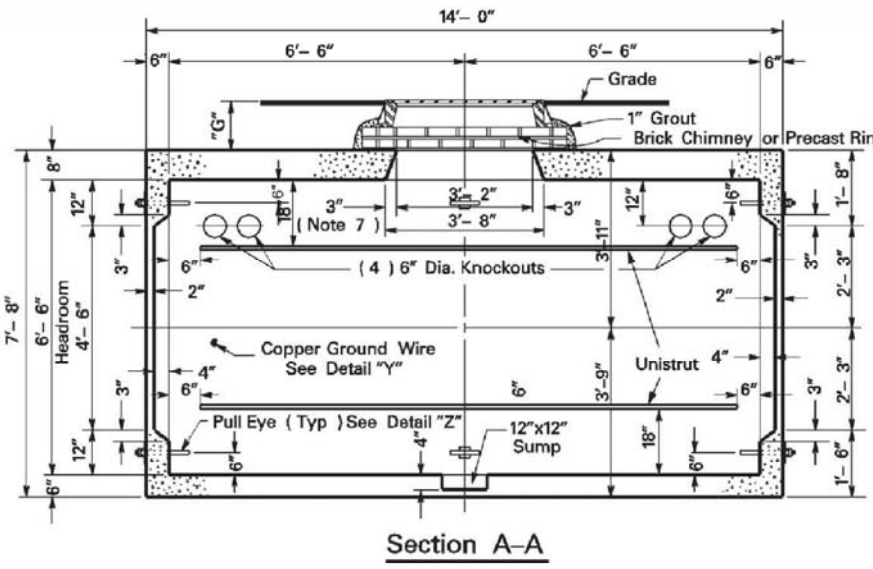
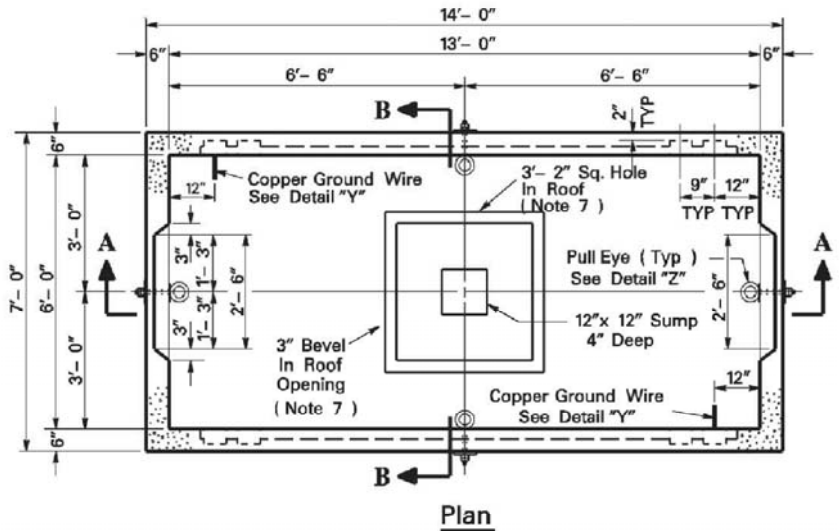
nationalgrid

PRECAST CONCRETE MANHOLE

MS 3462

Page 1 of 3
6/14 Issue

- SCOPE - Specifications for two way distribution - 6 Ft. x 13 Ft. (Inside)
- GENERAL - SAP Item ID 1000189 (PS Item ID 9200889), Standard Item UM22.
- MATERIAL - Precast Concrete. Approximate weight is 9.8 tons per section.
- APPROVAL - Shop plan shall be approved by National Grid.

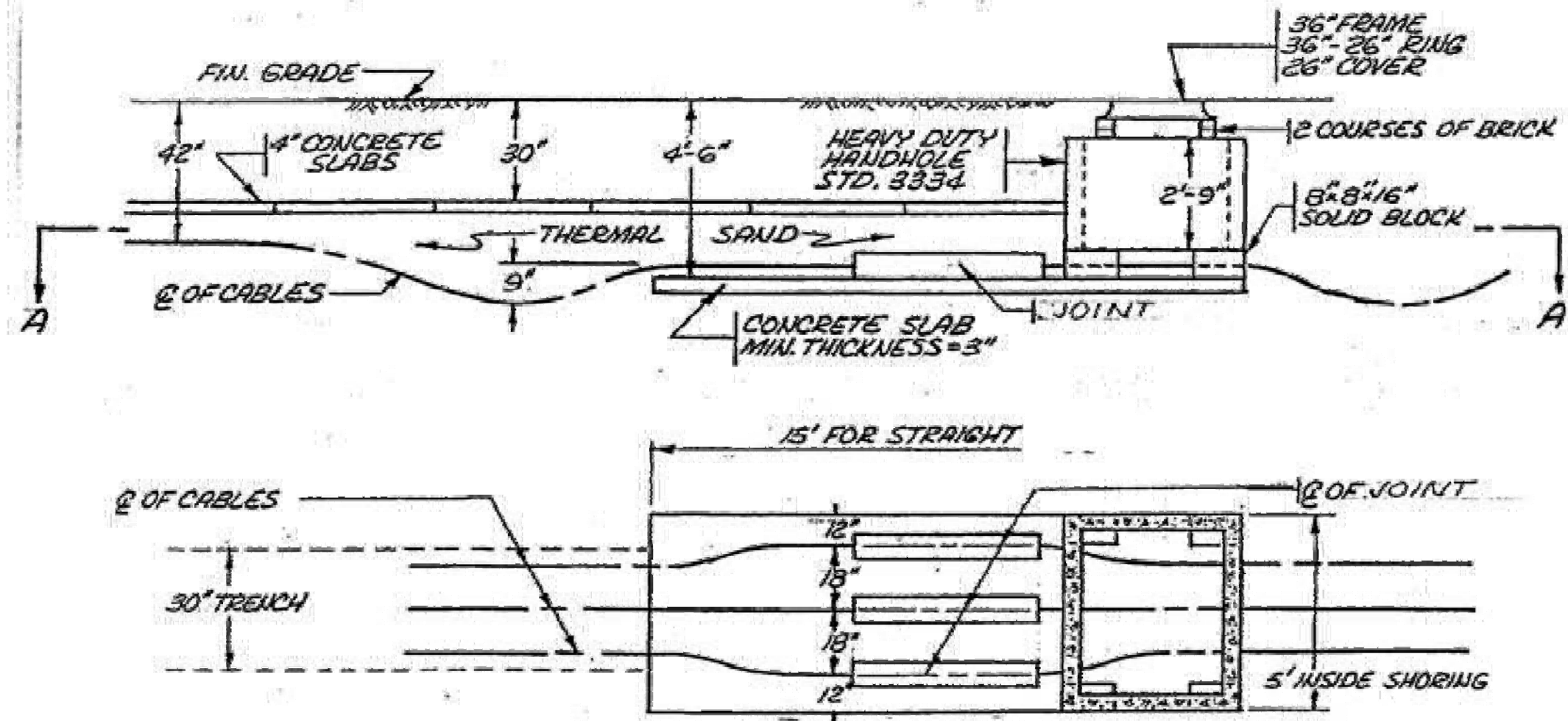


Section A-A

Supersedes 10/06 Issue - Updated Item ID numbers to SAP

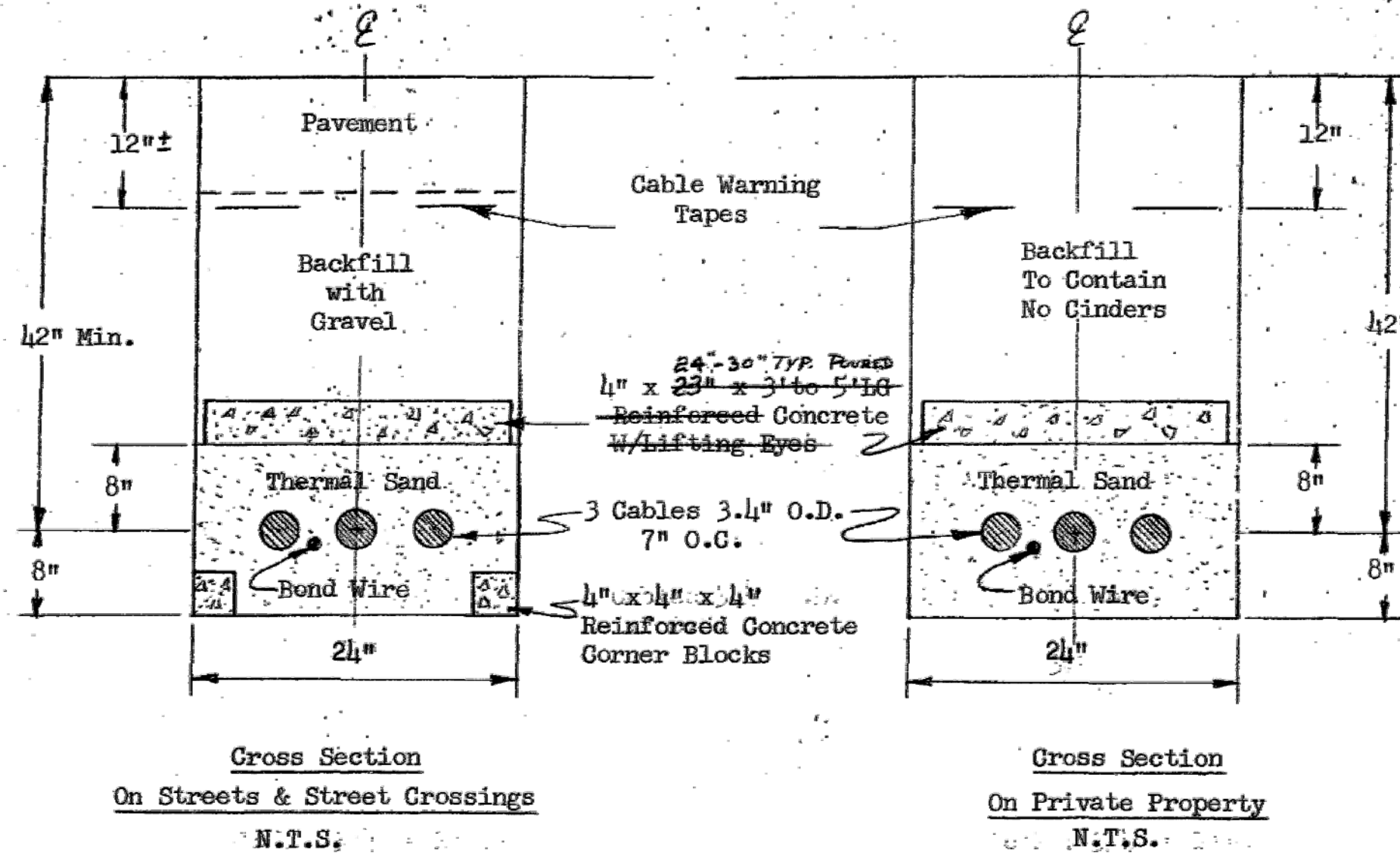
NGRID ELECTRIC MANHOLE

NOT TO SCALE



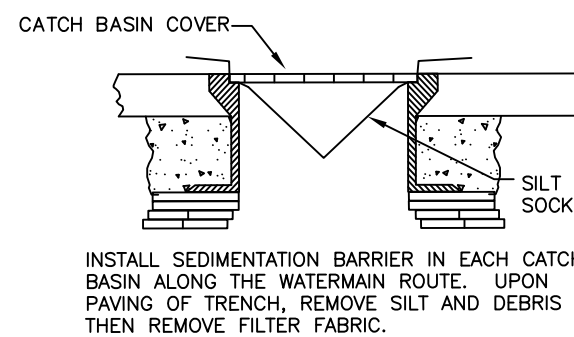
NGRID 115 kv (DIRECT BURY) ELECTRIC TRANSMISSION CABLE SPLICE JOINT

NOT TO SCALE
SCHEMATIC ONLY, FOR REFERENCE



NGRID 115 kv (DIRECT BURY) ELECTRIC TRANSMISSION CABLES

NOT TO SCALE
SCHEMATIC ONLY, FOR REFERENCE.
DEPTHS VARY FROM TYPICAL DEPTH SHOWN.



CATCH BASIN SEDIMENTATION BARRIER

NOT TO SCALE

Client	CITY OF SALEM, MASSACHUSETTS	Scale	N.T.S		
		Date	8/14/2015		
Project	MASSWORKS UTILITY RELOCATION	Job	MAWorks		
		Designed by	WMR		
		Drawn by	DJW	1.	REVISED FOR ADDENDA
		Checked by	WMR	No.	8/14/2015
		Approved by	WMR	Description	Date
	DETAILS			File: H:\Clients\Salem\Dodge Washington RCG review\CAD\Design.dwg	

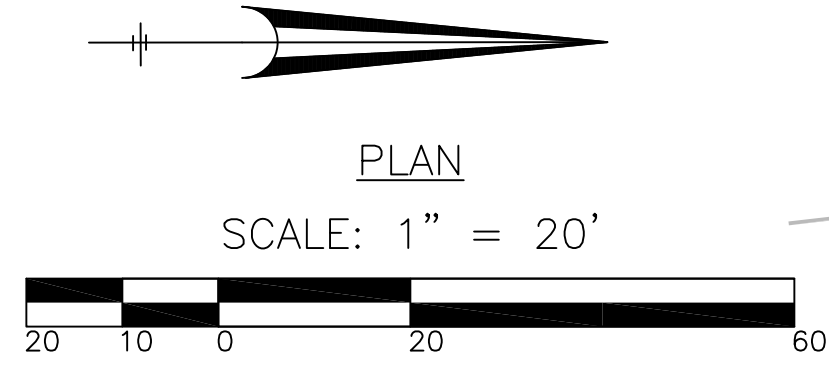




New England Civil Engineering Corp.

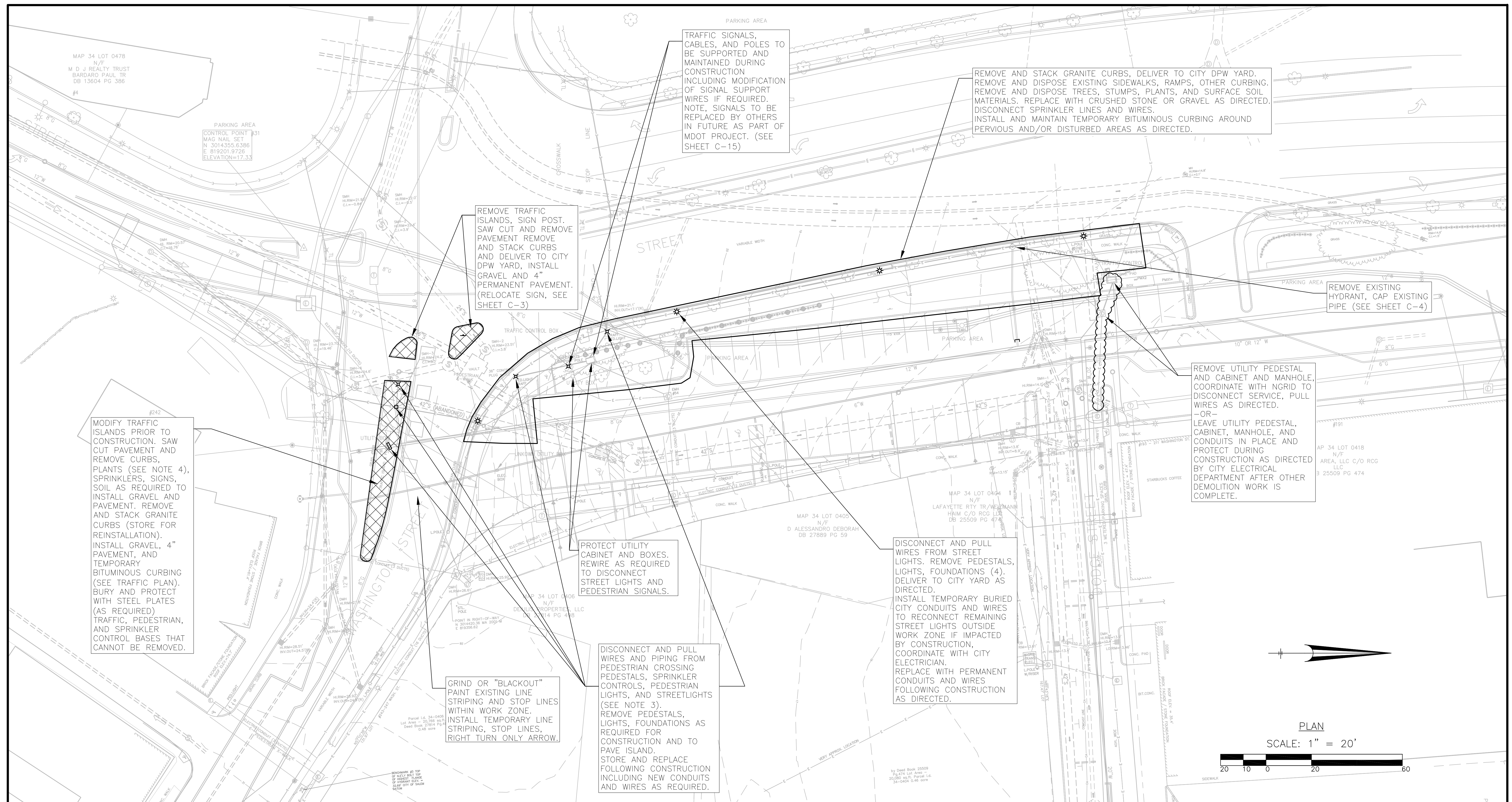
120 Washington Street
SALEM, MASSACHUSETTS

Sheet

D-7A



- | | | | | | | | | |
|---------|------------------------------|-------------|-----------|-------------------------------------------------------------------|-----------|-----------------------------------------------------------------------------------------------------------------------------------------------------------------------------------------------|-----------------------------------------------------------------------------------------------------------------------------------------------------------------------------------------------|------|
| Client | CITY OF SALEM, MASSACHUSETTS | Scale | 1"=20' | | |  <p>New England Civil Engineering Corp.</p> <p>120 Washington Street
SALEM, MASSACHUSETTS</p> | Sheet | |
| Project | MASSWORKS UTILITY RELOCATION | Date | 8/14/2015 | | | |  <p>New England Civil Engineering Corp.</p> <p>120 Washington Street
SALEM, MASSACHUSETTS</p> | C-7A |
| | | Job | MAWorks | | | | | |
| | | Designed by | WMR | | | | | |
| | | Drawn by | DJW | 1. REVISED FOR ADDENDA | 8/14/2015 | | | |
| | RESTORATION PLAN | Checked by | WMR | No. Description | Date | | | |
| | | Approved by | WMR | File: H:\Clients\Salem\Dodge Washington RCG review\CAD\Design.dwg | | | | |



NOTES:



- Sheet
- C-5A