

## ATTACHMENT A: SITE AND PHOTOS



*Location of site highlighted in orange.*







*Bertucci Ave. emergency access*



*View from Bertucci Ave. east side of field*



*Ledge along northern side*



*Pathway along northern side*



*Behind Bleachers, western Side*

*(North Shore Medical Center Property Line)*



*Parking Area /Collins Middle School*

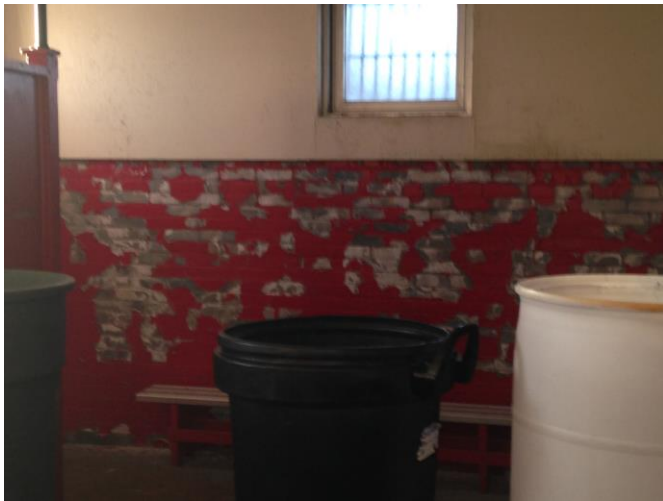


*Powder House Lane*



*Southern side, North Shore Medical Center*





*Current conditions of field house*



*New Lighting Electrical Panels*



*New Track/Lighting Bertram Field*