



Canal Street Improvement Project

**Mayor Kimberley Driscoll
Salem, Massachusetts**

South Salem Neighborhood Association Meeting

May 8, 2012

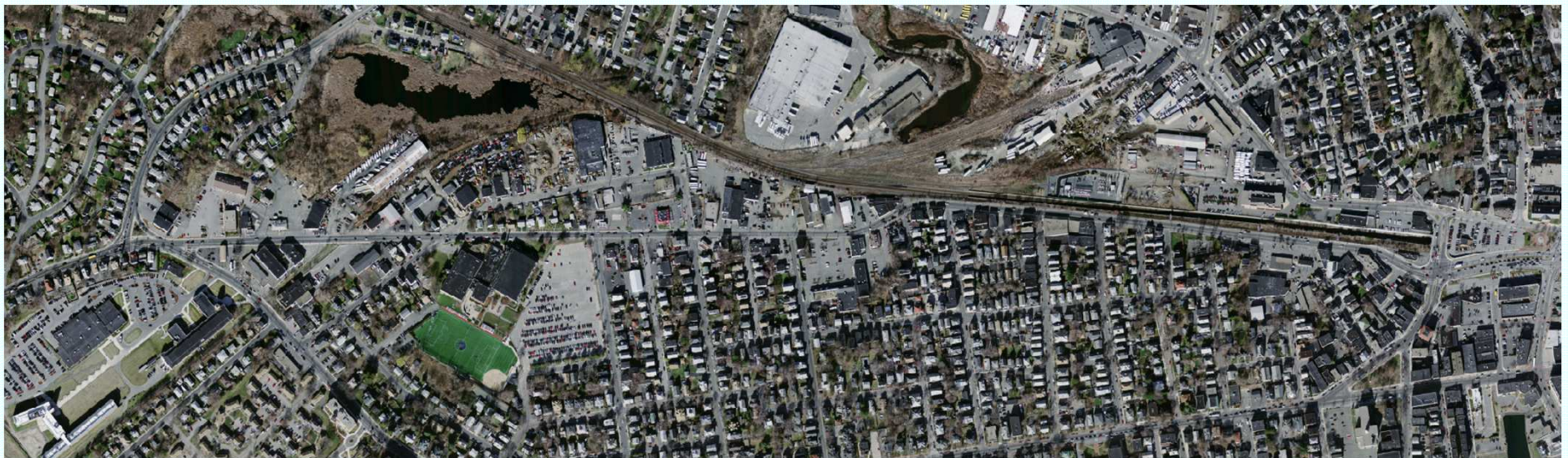


Locus Map





Canal Street Project Area





Existing Conditions

- Canal Street – “Urban Principal Arterial”
- 19,000 Vehicles per Day 2006
- 1,700 Peak Hour Vehicles 2006
- Trucks/Buses = 1-7%
- Pavement Condition: Fair-Poor
- Drainage Issues
- Multiple Curb Cuts



Existing Conditions

- Average of 90 accidents per Year
- Major intersections exceed the State's average Crash Rate
- Safety Issues for Pedestrians and Bicyclists
- Sidewalks vary with missing sections
- On Street Parking Varies along the Corridor



Existing Conditions Photos





Existing Conditions Photos



Safety Issues for Pedestrians and Bicyclists



Existing Conditions Photos





Existing Conditions Photos





Existing Conditions Photos

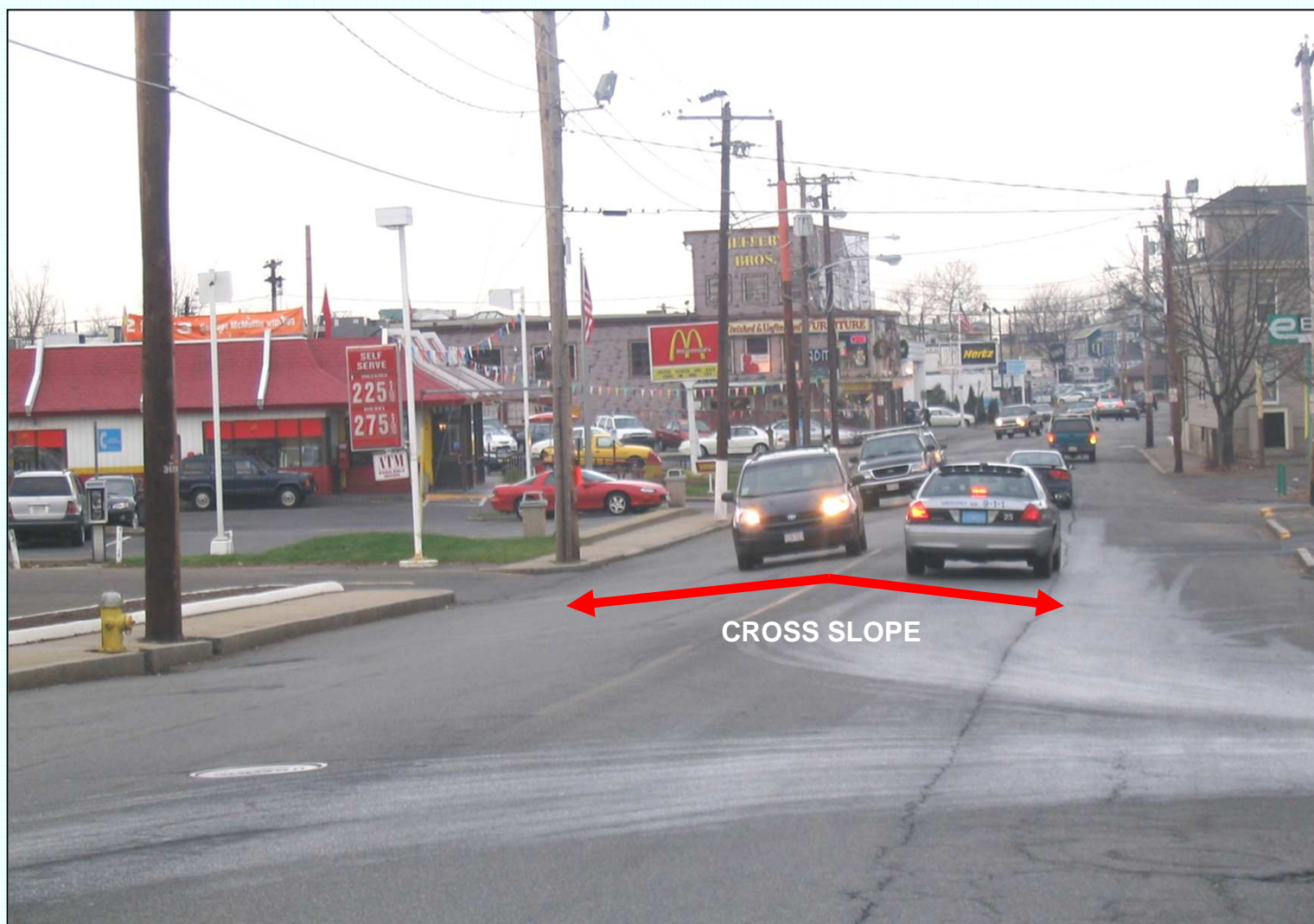


*

* Photo is old, gas is not selling for \$1.69, sorry.



Existing Conditions Photos





Existing Conditions Photos





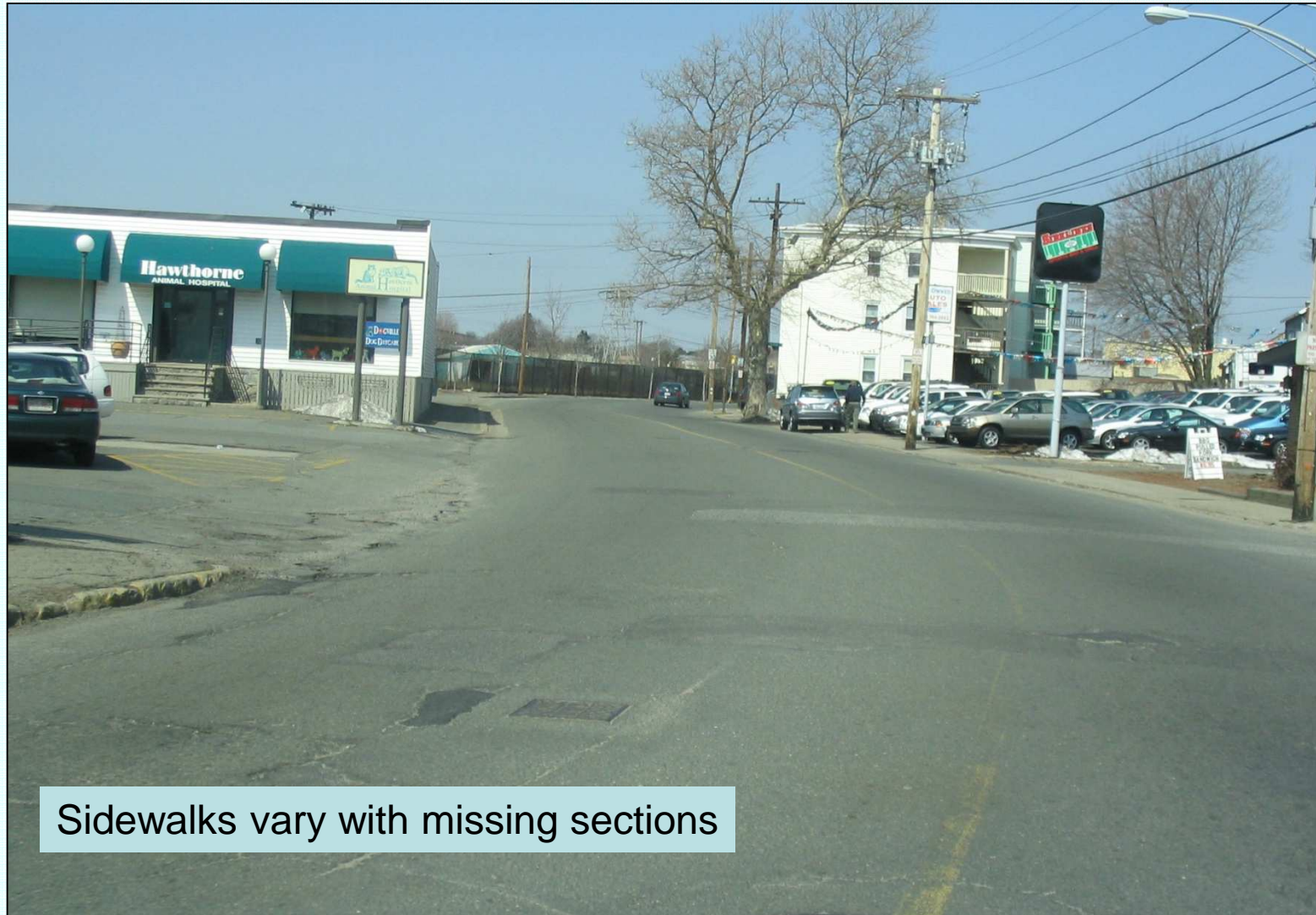
Existing Conditions Photos



Average of 90 accidents per Year



Existing Conditions Photos



Sidewalks vary with missing sections



Existing Conditions Photos





Existing Conditions Photos

Trucks/Buses = 1 - 7%





Existing Conditions Photos



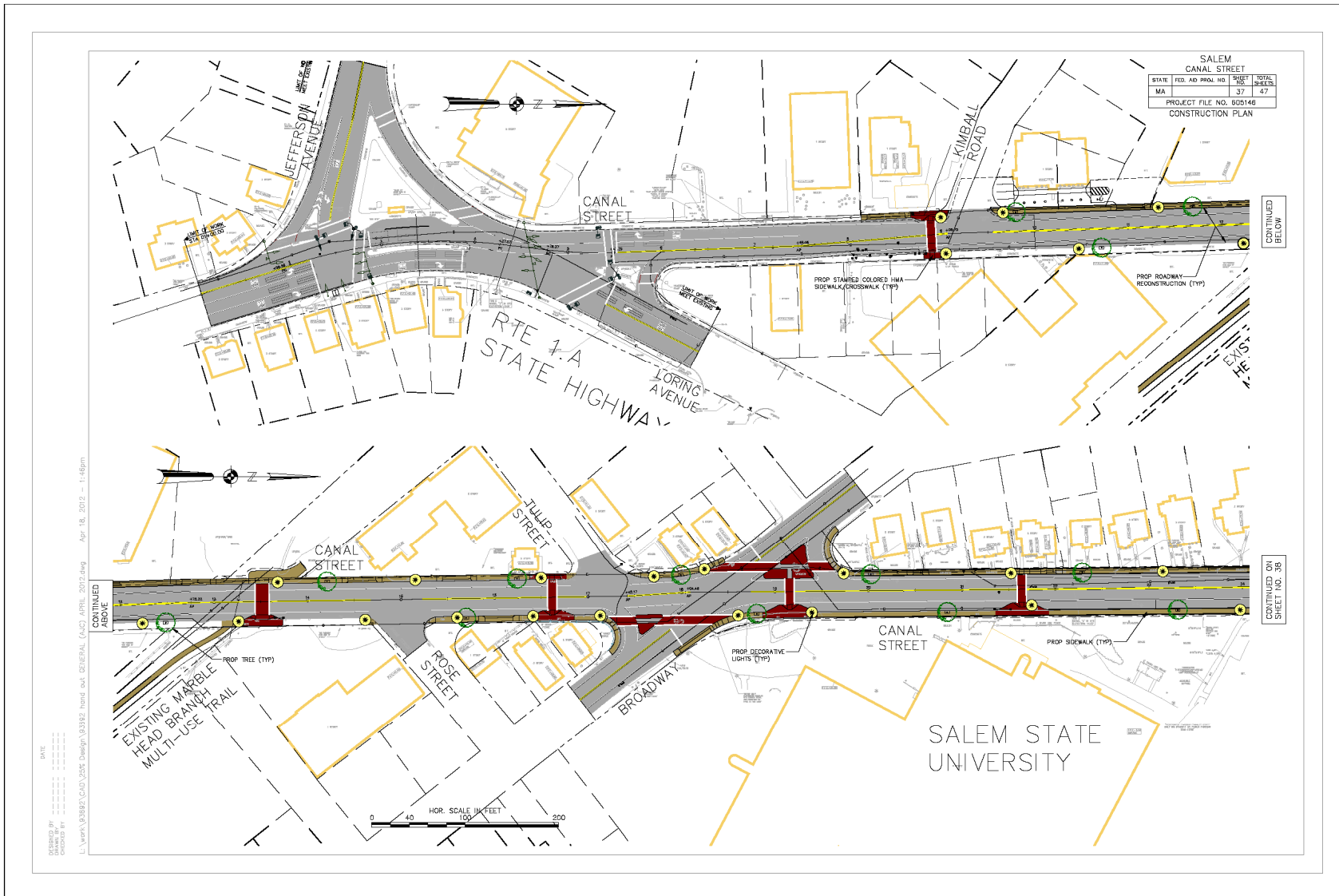


Project Goals

- Improve Safety for Vehicles, Pedestrians & Bicycles
- Provide a New Gateway to the City of Salem
- Better Define Access Locations and Curb Cuts
- Provide Streetscape Improvements including:
 - Ornamental Pedestrian Lighting, Street Trees & Stamped Colored Pedestrian Crossings
- Improve Pavement, Signage and Pavement Markings



Canal Street Improvement Plan



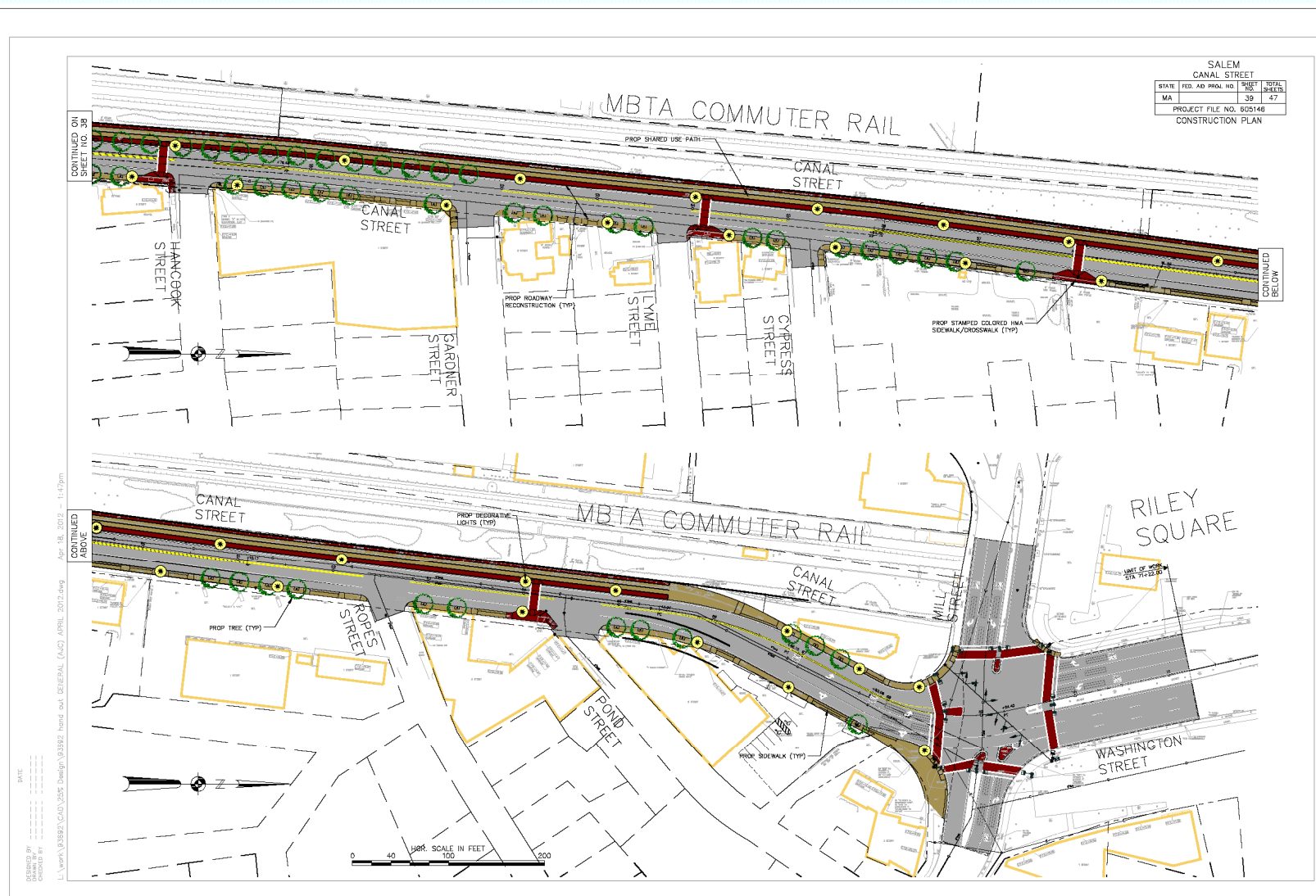


Canal Street Improvement Plan



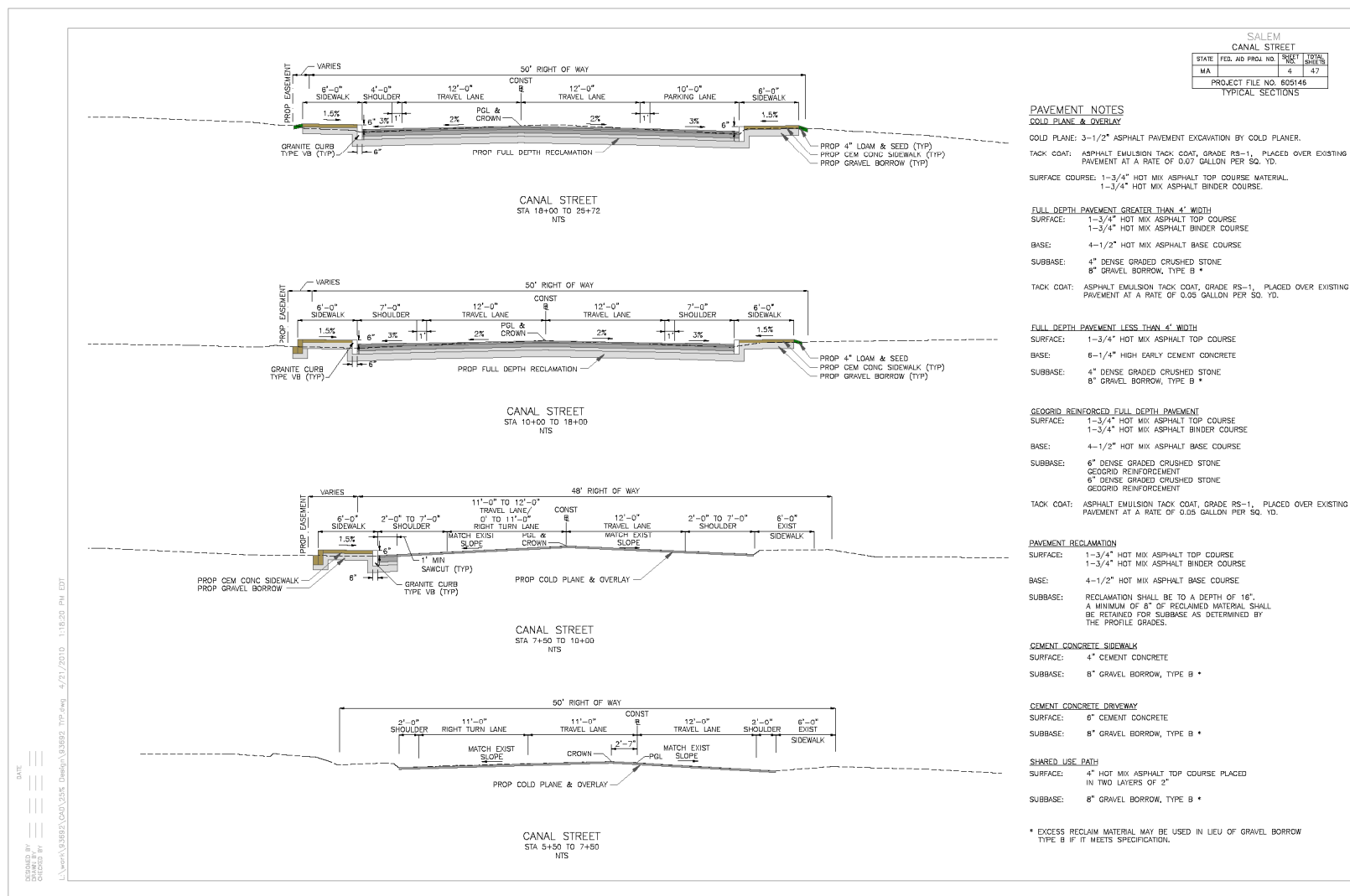


Canal Street Improvement Plan



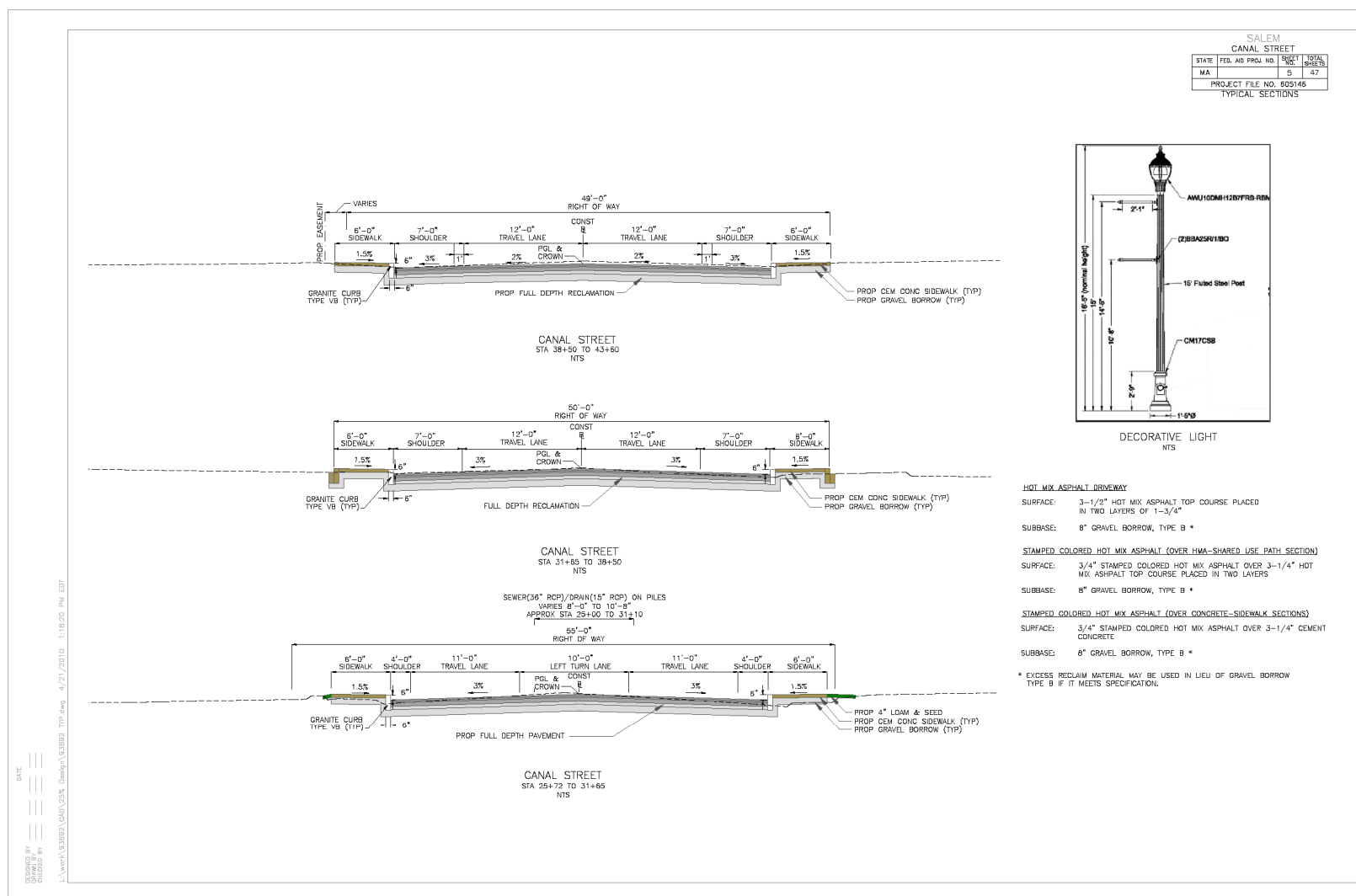


Canal Street Typical Sections



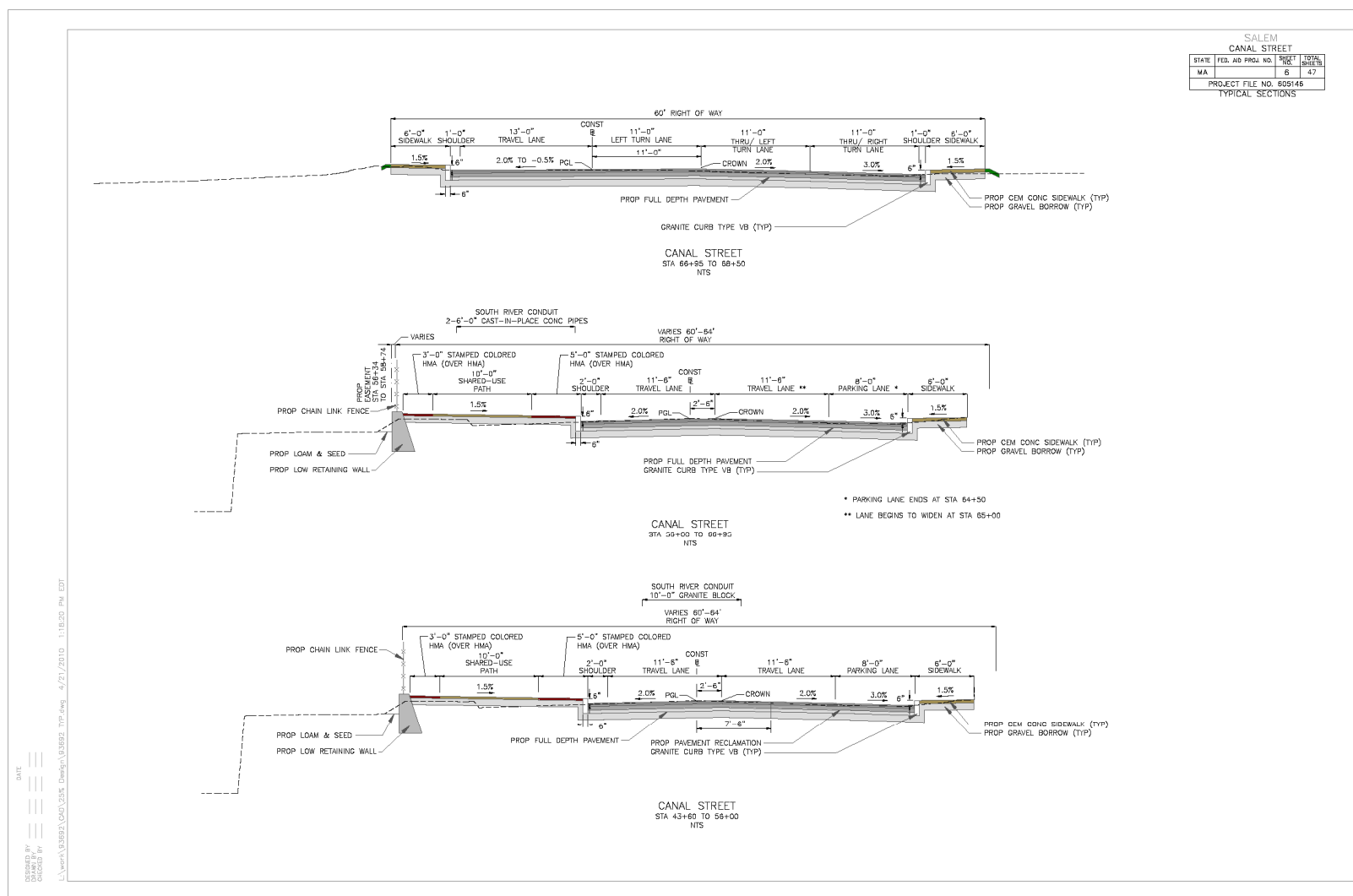


Canal Street Typical Sections



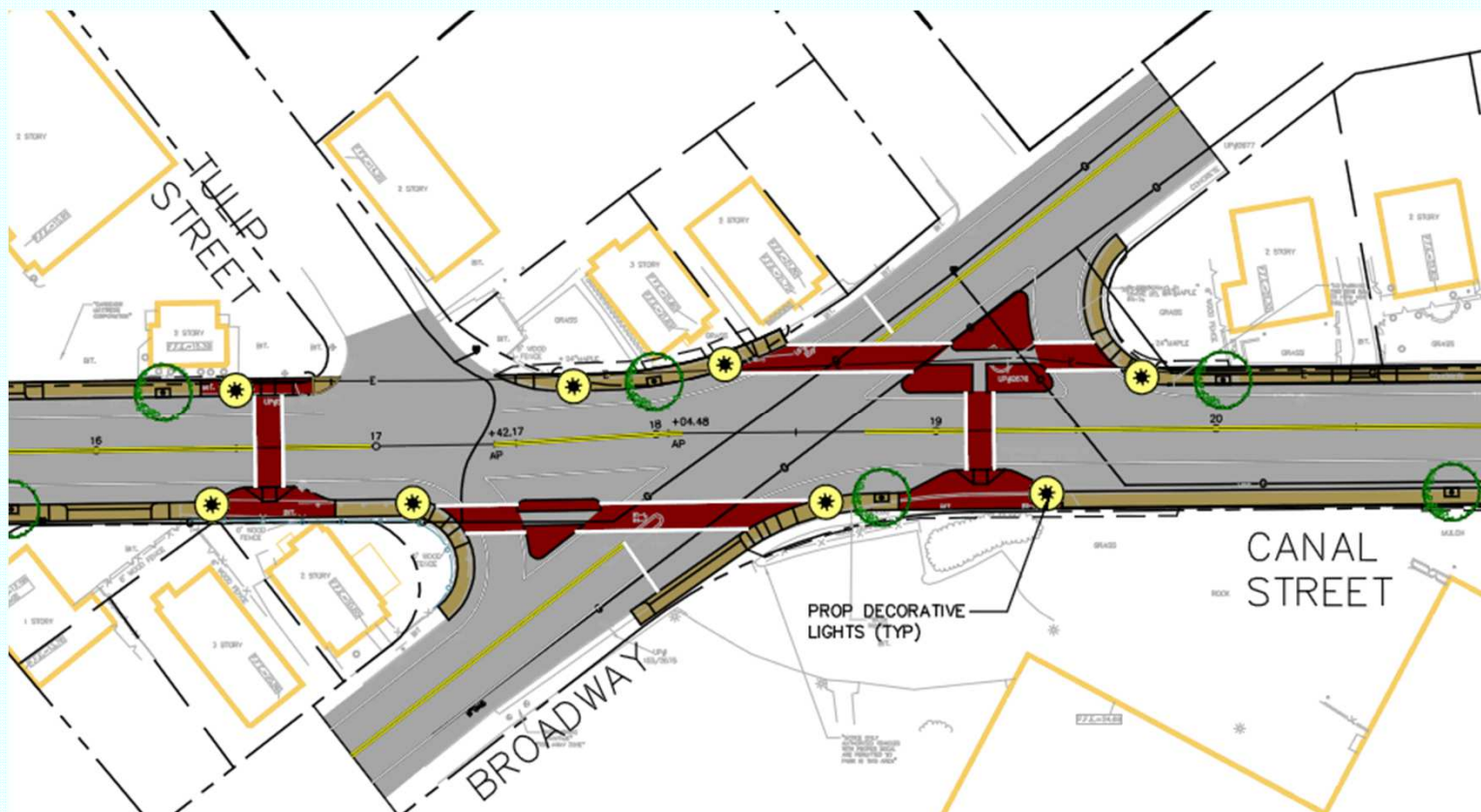


Canal Street Typical Sections





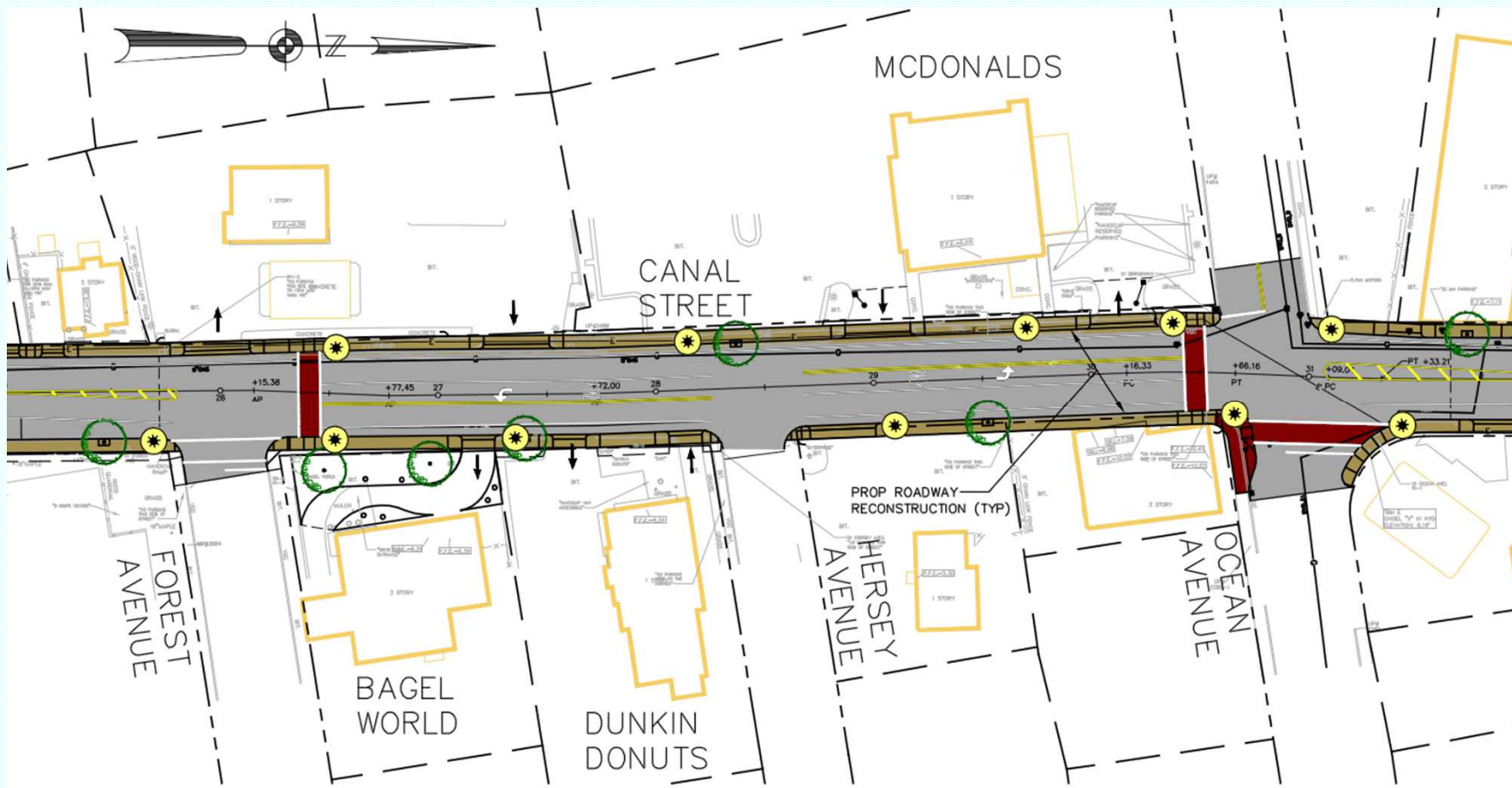
Broadway/Canal St. Intersection





Canal St- Forest Ave to Ocean Ave

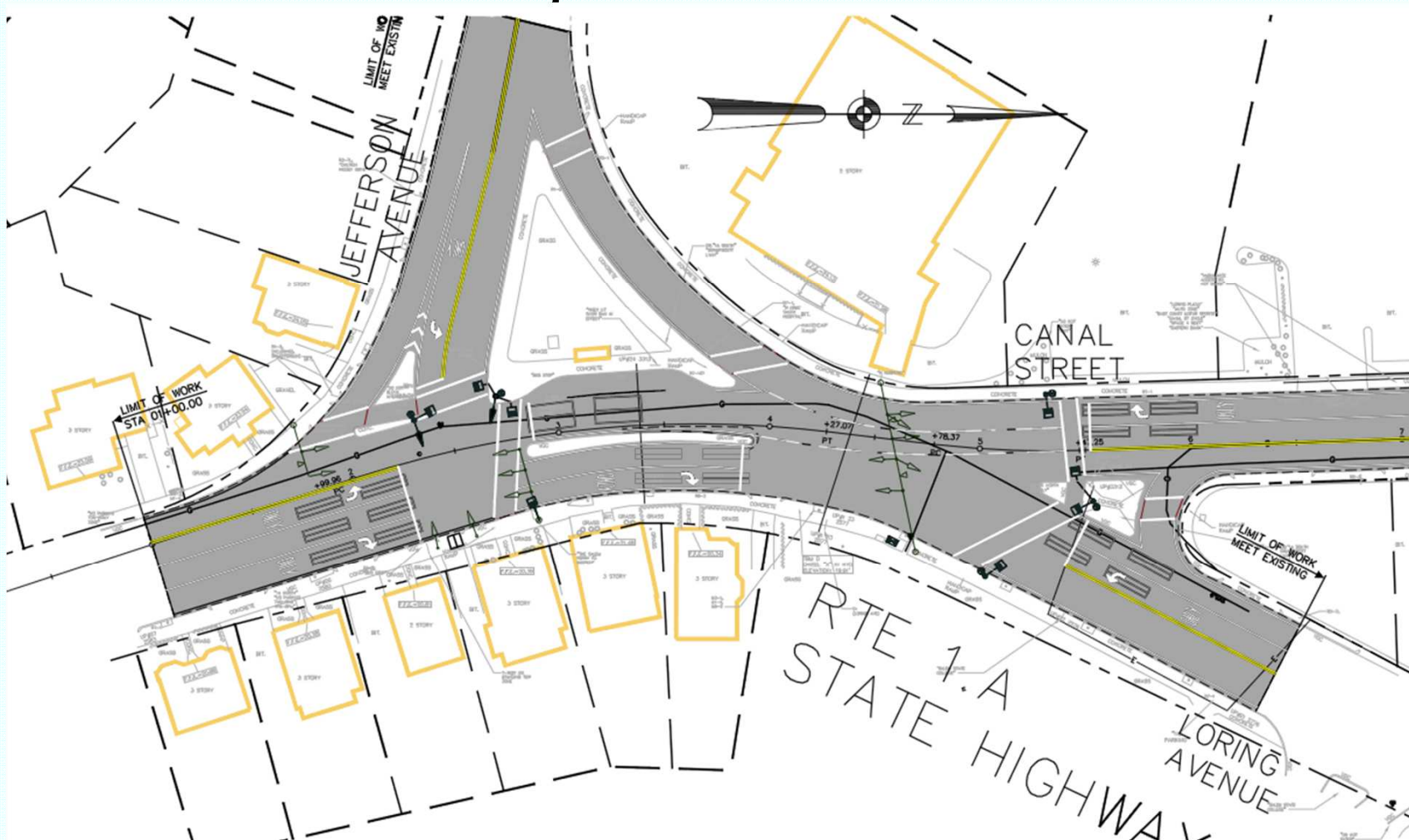
- New Left Turn Lane and Access Safety Improvements
- Roadway Reconstruction to Repair Settlement





Loring/Jefferson/Canal St Intersection Traffic Signal Improvements

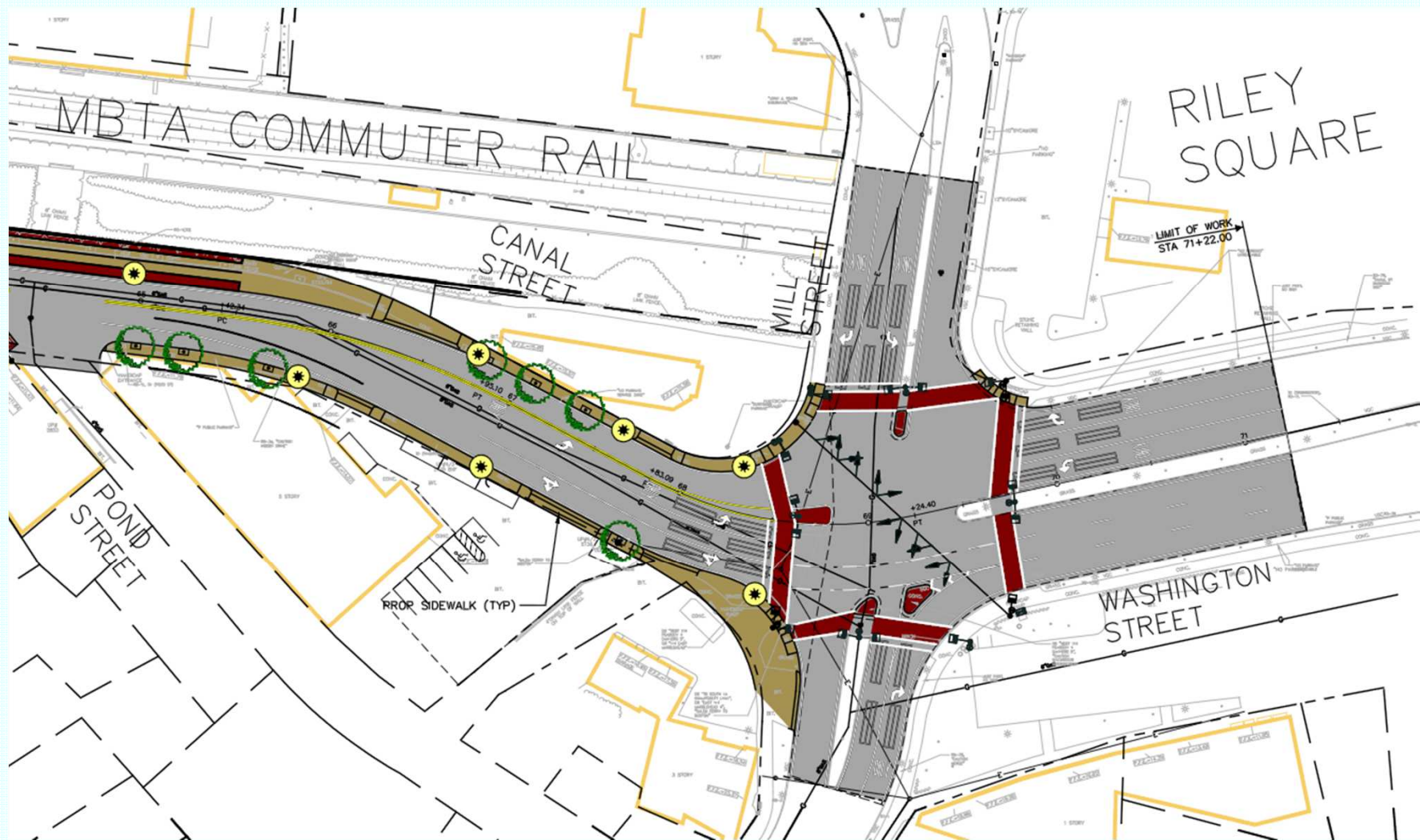
AECOM





Mill/Washington/Canal St Intersection Improvements

AECOM®





Canal St Streetscape & Pedestrian Improvements

AECOM





Project Status & Schedule

- 25% Preliminary Design Plans & Preliminary Right of Way Plans submitted to MassDOT
- Received MassDOT 25% comments
- Responding to MassDOT 25% comments
- Design Public Hearing – Summer 2012
- 75% Design & Final Right of Way Plans - Fall 2012 – Spring 2013
- Final Plans, Specifications and Cost Estimate - Summer 2013 – Fall 2013
- Begin Construction 2014



Project Funding

Transportation Improvement Program Construction Funding(TIP)

- The TIP identifies the transit and highway projects that are to be funded with federal and state funds and is updated annually by the Metropolitan Planning Organization (MPO).
- MPO's Planning Committee and Staff recommends the projects to be funded based on factors like condition of roadway, safety issues and design readiness.
- The Canal Street Improvement Project is currently scheduled for construction in Fiscal Year 2014



What you can do to help advance the project?

- Provide your comments and feedback.
- Write a letter in support of the project to the David Knowlton, Salem City Engineer for forwarding to the MPO.



Marblehead Branch Multi-Use Trail Extension Project – Phase 2

**Mayor Kimberley Driscoll
Salem, Massachusetts**

South Salem Neighborhood Association Meeting

May 8, 2012



Existing Multi-Use Trail





Existing Multi-Use Trail





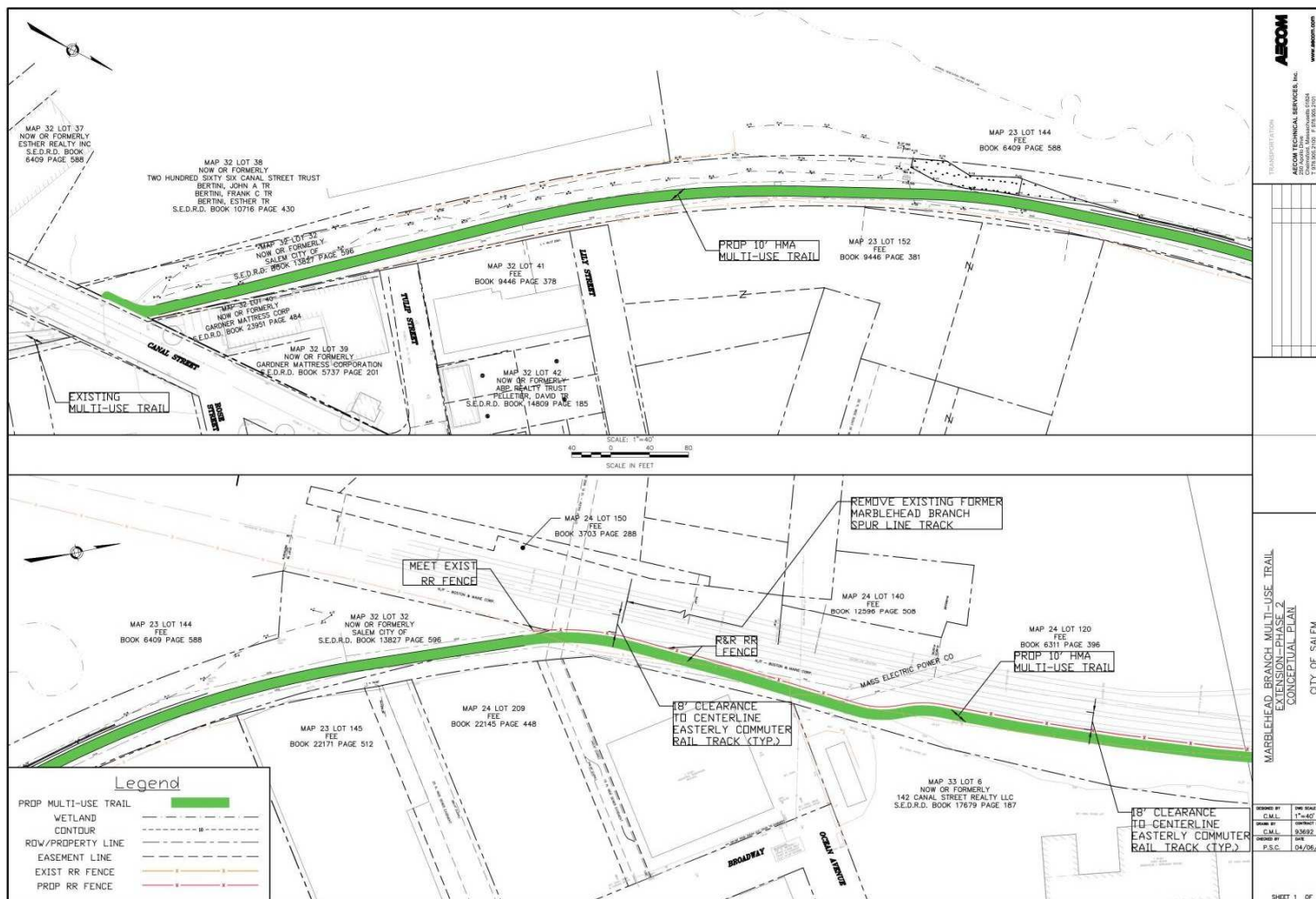
Existing Multi Use Trail





Multi Use Trail Extension Conceptual Plan

AECOM





Proposed Multi Use Trail Extension Conceptual Plan





Project Status & Anticipated Schedule



- Meeting with the MBTA to obtain a long term lease to utilize a portion of the MBTA right of way located along the east side of the existing commuter rail line for the Proposed Multi Use Trail Extension.
- Meeting with Abutting Property Owner regarding the Existing Freight Railroad Siding.
- Preliminary 25% Design & Preliminary Right of Way Plans – Summer 2012 – Fall 2012
- MassDOT 25% Review – Winter 2012
- Design Public Hearing – Spring 2013
- 75% Design & Final ROW Plans – Summer 2013 - Fall 2013
- Final Plans, Specification & Cost Estimate – Winter 2013
- Begin Construction 2014



Questions and Comments