



WELCOME TO SALEM!

New Residents' Guide

2023

INFORMATION INSIDE

Message from Mayor Dominick Pangallo



Welcome to the great City of Salem! I am so pleased that you have decided to make Salem your home.

Salem has much to offer, from world-class museums and cultural attractions, fine restaurants, and amazing architectural masterpieces, to an intriguing and infamous history, along with terrific retailers, diverse residential neighborhoods, an active waterfront, and a lively and historic downtown.

This is why Salem continues to attract new residents and hosts hundreds of thousands of visitors from around the globe each year!

Included in this guide is information to make your transition to Salem as easy and smooth as possible. We value resident input; always feel free to reach out to my office or any City department.

You can discover more information about City programs, community events and groups, and more by visiting www.salemma.gov.

Again, welcome to Salem and best wishes for the future. If I can ever be of any assistance, please do not hesitate to contact me at 978-619-5600 or mayor@salem.com.

I will see you around town!

Salem Residents Benefits

Living in Salem has many benefits. In addition to the numerous programs offered by the City, our own beaches, parks, and playgrounds, and a vibrant cultural and civic life through dozens of community and arts organizations, take advantage of **free admission to the Peabody Essex Museum, the House of the Seven Gables, and the Salem Witch Museum, a 20% discount for non-commuting round-trip fares on the Salem-to-Boston Ferry, and free Salem Trolley rides throughout the summer.** Call the Mayor's Office at 978-619-5600 for more details.

Get City updates	Page 2
Voter registration	Page 2
Snow emergencies	Page 3
Street sweeping	Page 5
City officials	Page 5
Resident sticker parking	Page 6
Special events & Destination Salem	Page 6
Parks, playgrounds, and trails	Page 7
Salem Public Schools & Library	Page 9
Trash and recycling	Page 10



Get City updates

The City of Salem uses **CodeRED**, a rapid communication system, sometimes called “Reverse 911,” to alert residents and businesses whenever there is an emergency or other notification. To sign up, click on the **CodeRED** link at www.salemma.gov/subscribe and fill out the form.

You can sign up to receive alerts on a landline and cellphone, and by

text message or email. You can also customize the type of alert you would like to receive.

If you would like to subscribe to email lists for True Bearing (the Mayor’s newsletter), City News & Announcements, Meeting Notices, Employment Opportunities, or specific Board Agendas, visit www.salemma.gov/subscribe and fill out the form.

SeeClickFix

To report anything from a pothole to a street light out, use SeeClickFix. Visit https://seeclickfix.com/salem_ma, or download the free app by searching for “See Click Fix” in your app store.



Dial 911 in the event of an emergency!

Voter registration

Any Salem resident who is a U.S. citizen and is at least 18 years old, is eligible to register to vote in Salem. If you are not yet 18 years old, but will be on or before the next election, you can register to vote by the deadline. You may also pre-register to vote if you are 16-17 years old.

Individuals wishing to register to vote may do so in the following ways.

1. Register Online at: www.sec.state.ma.us/OVR/
2. Register In-Person: Come to City Hall, 93 Washington Street, Elections Office, Room #5.
3. Register by Mail at: www.sec.state.ma.us/ele/elepdf/Voter-reg-mail-in.pdf, fill it out, and mail it in.
4. Register to vote when you go to the Registry of Motor Vehicles. Make sure you receive an acknowledgment notice from the registry that you are registered.

Voters need not register annually. If voters continue to answer the annual city census and do not move to another city, they may continue to vote in Salem. Before state and local elections, there is a deadline to register to vote for that election 20 days prior.

If you have any questions regarding voting, i.e. are you a registered to vote in Salem or not, where you vote, the deadline to register, the election dates, how to absentee vote, etc. You may call the Elections Office at (978) 745-9595 ext. 41210; visit www.salemma.gov/city-clerk or the Secretary of State’s website at: www.sec.state.ma.us/ele/eleidx.htm.



The Salem Skipper is a low-cost on-demand rideshare service that runs throughout the City of Salem. Find more at www.salemskipper.com or call 1-844-983-1842.

Find the City of Salem on social media!

www.facebook.com/CityofSalemMA
www.twitter.com/CityofSalemMA
www.instagram.com/CityofSalem

City Contact Information

Council on Aging: 978-744-0924
 Cemetery: 978-745-0195
 Electrical: 978-745-6300
 Fire (non-emergency): 978-744-1235
 Golf Course: 978-744-2149
 Harbormaster: 978-741-0098
 Park & Recreation: 978-744-0733
 Library: 978-744-0860
 Parking: 978-745-8120
 Police (non-emergency): 978-744-0171
 Public Services: 978-744-3302
 School Department: 978-740-1222
 Transfer Station: 978-744-3302
 Veterans Agent: 978-745-0883
 Winter Island: 978-745-9430

City Hall and Offices: 978-745-9595

Assessor: ext. 41100
 Building: ext. 42200
 Clerk: ext. 41200
 Collector: ext. 41300
 Elections: ext. 41210
 Engineering: ext. 46100
 Finance: ext. 41400
 Health: ext. 42400
 Human Resources: ext. 42000
 Legal & Licensing: ext. 41500
 IT: ext. 44000
 Mayor: ext. 41000
 Planning: ext. 42500
 Purchasing: ext. 41600
 Traffic: ext. 45000
 Treasurer: ext. 42100



Snow emergencies



Winter storms increase tension, as well as the risk of injury to members of the community who must travel during snow conditions. The City's goal is to quickly open the streets and make them passable so that essential traffic can safely negotiate roadways.

The City of Salem implements a snow emergency parking ban when it is anticipated that more than two inches of snow accumulation is likely.

Parking regulations are strictly enforced to ensure that streets remain accessible for snowplows, fire apparatus, and other emergency vehicles. Any vehicle that impedes the snow removal process will be ticketed and towed.

When a snowstorm begins, the City salts all main roads and bus routes to prevent snow from binding to the pavement. Snow plowing begins when snow accumulates to 2 inches or more. After snowfall, main streets, bus routes, and residential streets with hills and intersections are salted and sanded to achieve bare pavement conditions.

The City of Salem maintains a Plowing Plan to clear all streets in an orderly and strategic fashion. If, during a snow emergency, you have questions about a plowing issue, contact the Department of Public Services at 978-744-3302 or snow@salem.com.



Snow-related City information online at www.salemma.gov/snow

Finding out

The City notifies residents about snow emergencies when on-street parking is prohibited through CodeRED, email alerts, on SATV, and on www.salemma.gov. When a snow ban is imminent or in effect, flashing blue lights at key intersections throughout the City are activated. The Salem Police snow hotline is 978-744-0171 ext. 4.



Snow Shoveling & Hydrants

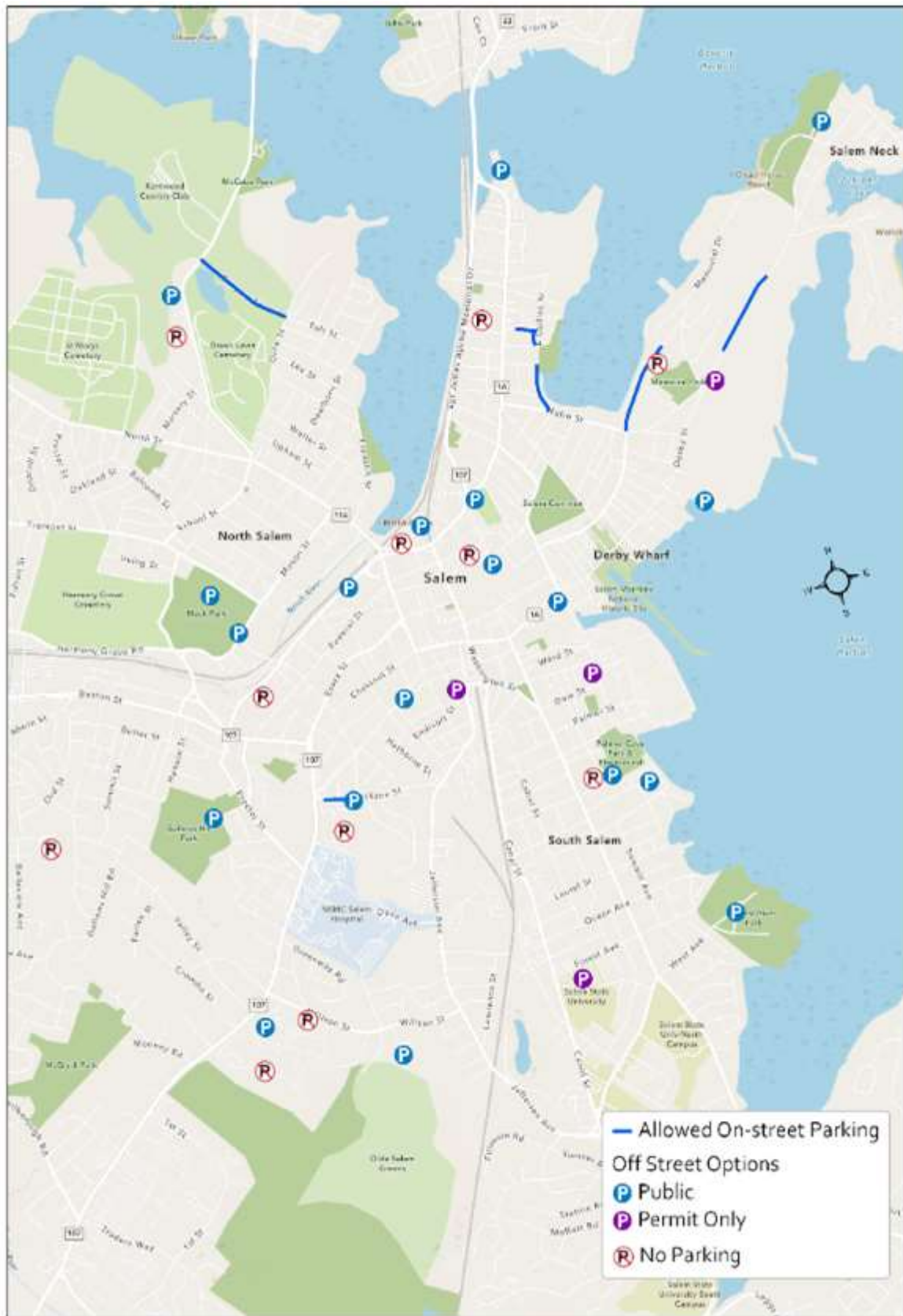
City ordinance requires property owners to remove snow from bordering sidewalks within 6 hours after snowfall. Residents can also help by "adopting" their nearest catch basin and fire hydrant and shoveling them out after snowstorms. Find out more at www.salemma.gov/home/news/salem-launches-adopt-hydrant-program.

Where to park

Check www.salemma.gov/snow or on page 4 for all available locations for parking during a snow emergency parking ban in Salem. Vehicles must be removed at the conclusion of the snow emergency or they will be towed. Vehicles parked at sites marked * must be removed by 6AM. Locations marked ** are charged and all

other locations are free. Locations marked *** require a permit in advance of parking. Most school lots are not snow parking lots.

- Museum Place garage**
- MBTA garage**
- South Harbor garage**
- Salem State University's O'Keefe Center lot***
- Footprint lot***
- Shetland lot***
- Forest River Park lot
- Salem Willows lot
- Universal Steel lot
- Sargent Street (west side)
- Lower Gallows Hill Park lot
- Fort Avenue (north side)
- Salem High School central lot*
- Salem Wharf lot on Blaney Street
- Castle Hill Park lot
- Jackson Street head-in spaces*
- Collins Street (along seawall)
- Mack Park lots
- Szetela Lane (north side)
- Bates School playground lot*
- Former senior center lot
- Salem Street (designated spaces)*
- Broad Street Park lot*
- Lafayette Place lot
- Remond Park lot
- Palmer Cove lot
- High Street Playground lot (Zone D-Yellow permit holders only)
- Beacon Avenue (east side)
- Lathrop Street (north side)



Snow Emergency Parking



Street sweeping

Each year Salem's residential streets are swept from 7 a.m. to 3 p.m. Monday through Friday in early spring and early fall. Sweep days are scheduled for the day after your trash pick-up day. If your trash is picked up on a Friday, your street will be swept on the following Monday.

The odd and even sides of residential streets are swept on the same day. To find your street sweeping dates, visit www.salemma.gov/streetsweeping.

In addition to residential street sweeping the City sweeps entrance corridors in May and in September, between 5 a.m. and 7 a.m. and the downtown area at least once per month April through September.

Temporary no parking zones are posted on roadways during sweeping.

On sweeping days, please remember to move your car to avoid being ticketed and towed. By moving your vehicle, you are helping to keep our City clean.

Please note that certain weather conditions prevent the use of street sweepers. During moderate to heavy rainfall and extreme cold temperatures sweepers will not operate.

Streets are not swept on holidays. Also, certain public works emergencies, projects, staffing and/or equipment issues may cause the street sweeper to be unable to complete its daily route.

In these cases, the sweeper will return to your street on its next regularly scheduled day, if not sooner, if possible.

Salem's entrance corridors:

- Boston Street
- Bridge Street
- Derby Street
- Essex Street
- Loring Avenue
- Lafayette Street
- North Street
- New Derby Street

City officials

How to contact your City officials

Mayor

Dominick Pangallo
mayor@salem.com
Salem City Hall
93 Washington Street
978-619-5600

City Council

Ward 1 Councillor
Robert McCarthy
rmccarthy@salem.com
978-744-1759

Ward 2 Councillor
Caroline Watson-Felt
cwatsonfelt@salem.com
978-515-3593

Ward 3 Councillor
Patti Morsillo
pmorsillo@salem.com
978-317-4697

Ward 4 Councillor
Leveille McClain
lmcclain@salem.com
978-219-2379

Ward 5 Councillor
Jeff Cohen
jcohen@salem.com
978-587-1443

Ward 6 Councillor
Council President
Meg Stott
mstott@salem.com
781-486-3525

Ward 7 Councillor
Andrew Varela
avarela@salem.com
978-548-8455

Councillor At-Large
Conrad Prosniewski
cprosniewski@salem.com
978-375-7221

Councillor At-Large
Ty Hapworth
thapworth@salem.com
207-659-4755

Councillor At-Large
Domingo Dominguez
ddominguez@salem.com
978-815-1089

Councillor At-Large
Alice Merkl
amerkl@salem.com
978-621-9693

School Committee

Dominick Pangallo, Chair
mayor@salem.com
Salem City Hall
93 Washington Street
978-619-5600

Manny Cruz, Vice Chair
macruz@salem.com
978-304-6870

Amanda Campbell
acampbell@salem.com

Beth Anne Cornell
bacornell@salem.com
617-851-9975

Mary Manning
mmanning@salem.com
978-826-3384

Veronica Miranda
vmiranda@salem.com

Kristin Pangallo
kpangallo@salem.com
978-414-5182



Resident sticker parking

If you live on a street that is posted as "Resident Parking Only," your vehicle is eligible for a resident parking sticker, provided it is registered in the City of Salem. Resident parking stickers are valid for one year. Apply for your resident parking sticker at the Parking Office (1 New Liberty Street). The application form and a current listing of resident parking only zones are available at www.salemma.gov/parking/pages/resident-permit-parking.



The fee for a resident parking sticker is \$5. Place your sticker on the driver's side lower corner of the vehicle's windshield. A sticker only permits you to park on-street in your zone. For the complete list of streets in each of the six resident parking zones visit the website above. All posted parking restrictions still apply.



Residents may receive up to two visitor parking permits per household. Visitor permits may be used only when the visitor is visiting the household to which the permit is issued and cannot be replaced if lost. Hang a visitor permit on the vehicle's rear-view mirror so it is fully readable from the vehicle's exterior. Visitor permits cost \$10 for the first permit and \$20 for the second permit, each good for one year.



2-year stickers for parking at Winter Island, Forest River Park, Kernwood Marina, and the designated resident parking area at Salem Willows can be obtained by bringing your vehicle to the Dept. of Parks & Recreation (401 Bridge St.) The fee is \$25 (\$15 if resident is 60 years of age or older or a veteran). A second sticker can be bought for \$5. Only vehicles registered in Salem are eligible. License or proof of residency and vehicle registration are required at time of purchase.

Visit Salem.org and download the free Destination Salem app to find more ways to explore Salem. The site and app feature a calendar of events, as well as information on restaurants, shops, activities, and museums. You can also request a printed Salem Visitors' Guide and subscribe to weekly and monthly emails highlighting special programs, events, and activities for all ages.

ANNUAL SPECIAL EVENTS (WWW.SALEM.ORG)



Salem's So Sweet Festival

2nd weekend of February throughout Salem. Celebrate Valentine's Day with chocolates and ice sculptures. www.salemssosweet.com



Salem Farmers' Market

Thursdays, 3-7pm, mid-June through late October, typically in Derby Square. Check website to confirm 2021 location. salemfarmersmarket.org



July 4th & Heritage Days

July 4, Derby Wharf: concert and fireworks display. The 2nd week of August is Heritage Days, with an Ice Cream Bowl, Pizza Fest, arts events, and more.



Haunted Happenings

October. Fun-filled, family-friendly events all month make up America's premiere Halloween celebration. hauntedhappenings.org



Parks, Playgrounds, & Trails

Salem's parks and playgrounds, beaches, Winter Island, Salem Willows, Salem Common, Olde Salem Greens Golf Course, and the new Forest River Park Outdoor Recreation and Nature Center are among the finest public spaces on the North Shore.

Salem has 26 basketball courts, 20 playgrounds, 15 baseball diamonds, 8 tennis courts, two staffed beaches, two public pools, two splash pads, a street hockey court, a skate park, 11 pickleball courts, and the 129-acre Salem Woods. These wonderful resources offer Salem residents many unique experiences for fitness, fun, and a stronger community.

Whether enjoying a park on your own or part of a program, Salem's open spaces, parklands, and water resources offer the opportunity of healthier lifestyles and fun for the entire family. Salem Park and Recreation programs are not just for children, either. Whether you are a youngster or a senior citizen or anything in between, there is a program for you, with more being added every year.

From youth basketball to boot camp, from swim lessons to art classes, there is something for everyone in the over 100 programs that the City offers. For more information about programs, parks, and resources contact the Parks, Recreation, and Community Services department: 978-744-0924 or www.salemma.gov/recreation.

Register online

Find a full listing of upcoming park and recreation programs and

register online quickly at www.salemrec.com.

Salem Dog Park

Located at Leslie's Retreat Park, the Salem Dog Park is available to Salem residents and their canine friends. An annual "Pooch Pass" is required for all dogs using the park and may be purchased at 401 Bridge Street for \$25. To purchase a Pooch Pass show a current dog license, proof that your dog is current on rabies and distemper, and is spayed or neutered. More information is at www.salemma.gov/recreation/pages/salem-play-area-canine-exercise-space.

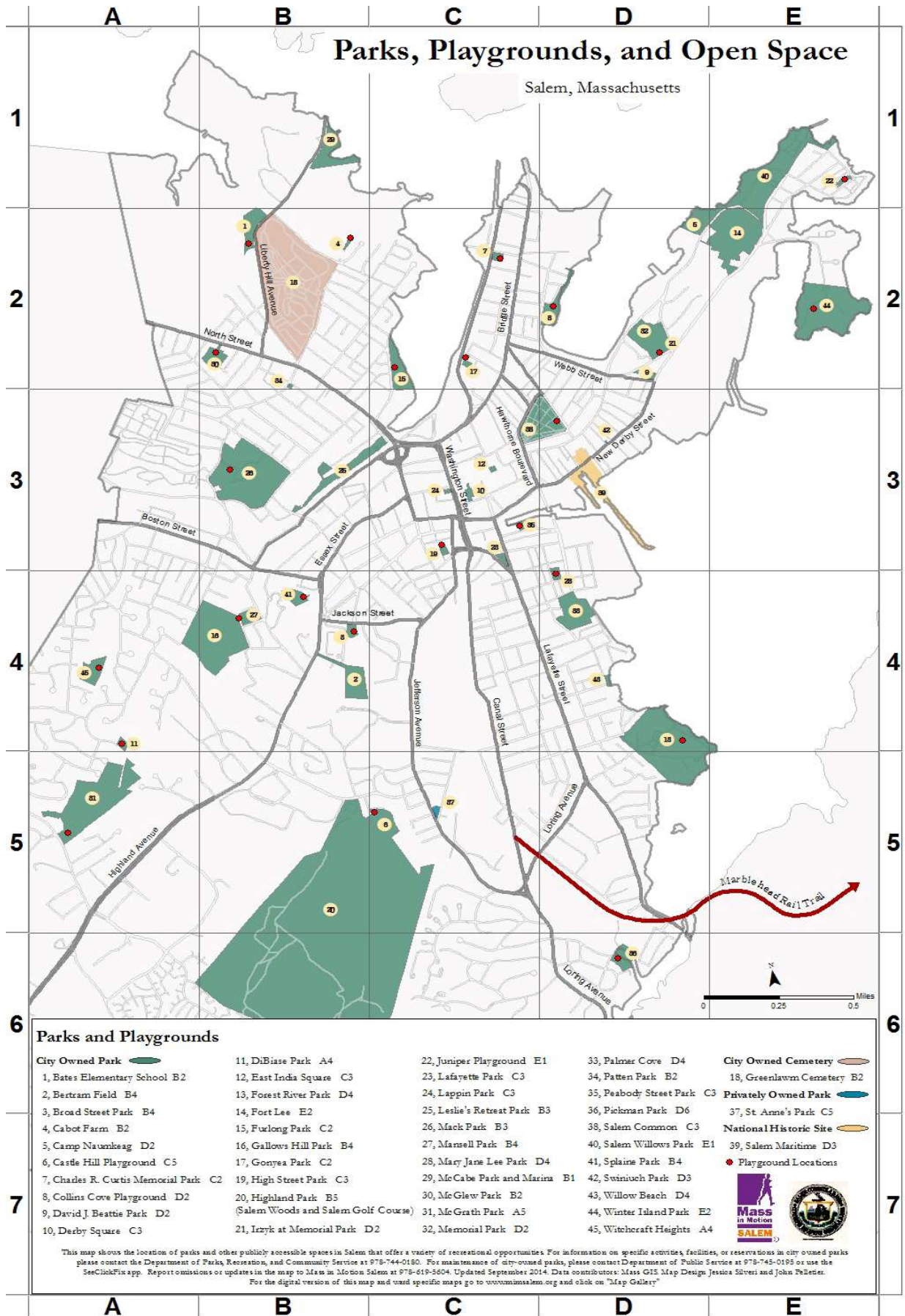
Special Facilities

In addition to the many parks, playgrounds, beaches, and open spaces, Salem also offers a number of special facilities, some of which can be rented for private functions or events. These include Winter Island (www.salemma.gov/winter-island-park), Salem Willows band shell, the community room at Forest River Park, and the Salem Witch House (not available for rent) (www.witchhouse.info).

Salem Bike Path

Salem is a bike-friendly city, with bikes welcomed on the Ferry, the Bluebikes bike share program, mountain biking trails in the Salem Woods, and the Salem Bike Path. The Salem Bike Path is a paved, multi-use path open to non-motored uses and is part of the East Coast Greenway Alliance Trail System. Learn more about Salem's bike programs and amenities at www.salemma.gov/bicycling-advisory-committee.





Salem's Public Schools

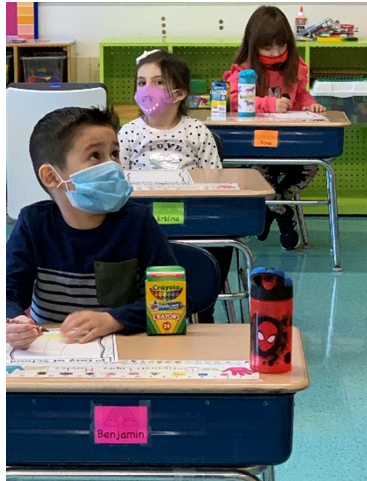


Salem Public Schools is an urban public school district serving the youth of our city. Our leaders and our teachers are passionate about education and have a dedication to student achievement and nurturing the whole student. Our commitment to staff and students is strengthened by engaging our equity and social emotional foundation as the lens we view all of our work through. We respect and value the racial, cultural, and linguistic diversity of our students and their families, and have a strong commitment to the Salem community. Salem Public Schools staff serve all of our students, regardless of ability or language and we enroll approximately 4,000 students across its eleven schools.

Salem provides the opportunity for free pre-K to Salem residents through our Early Childhood Center and Pre-K programs located in some primary education schools.

Salem has six primary education schools – Bates Elementary, Bentley Academy Innovation School, Carlton Innovation School, Horace Mann Laboratory School, Saltonstall K-8, and Witchcraft Heights Elementary.

Our secondary education schools include Collins Middle School, Salem High School, Salem Prep, & New Liberty Innovation School. Learn more about Salem schools at www.salemk12.org.



The schools in the Salem Public School District provide and promote the academic, social, emotional, and physical development of each student through the equitable delivery of challenging, relevant, and joyful learning experiences. We empower all students to chart a personalized path to success that includes a commitment to the common good.

Students are inspired to reach their full potential as responsible individuals, with the ability to think critically, problem solve, and collaborate and communicate effectively.

The Salem Public Schools Parent Information Center (PIC) provides bilingual assistance to parents seeking to enroll their child in Salem Public Schools and is available to answer

questions. They are located at the Salem Public Schools Administrative offices at Collins Middle School, 29 Highland Avenue and can be reached at 978-740-1225 or pic@salem12k.org. Salem Public Schools is proud to be home to the 2022 Massachusetts Teacher of the Year, Marta García.



The Salem Public Library partners with the Salem Public Schools summer reading and lunch programs, provides access to digital resources for Salem students, and much more! Located at 370 Essex Street, the library offers bestsellers, local history, and Spanish language resources, as well as a full schedule of programming for children of all ages. www.salempl.org or call 978-744-0860.



Trash and recycling



The City's trash collection contractor picks up trash on a weekly basis and recycling bi-weekly. The pick-up date varies by neighborhood. The schedule is available online at www.salem.com/recycling or by calling the trash and recycling office at 978-619-5672.

Trash and recycling may be left out after 6 p.m. the night before pick-up, but no later than 7 a.m. the morning of pick-up. Trash and recycling must be placed in the wheeled carts provided by City, with lids closed. Please do not put any plastic bags in your recycling. Any material placed outside the cart, except

for official orange overflow bags or scheduled bulky items, will not be collected.

To schedule a free bulky item collection, call Waste Management at 800-972-4545 and follow the prompts for residential collection at least 48 hours prior to your recycling collection day. Residents can schedule up to two bulky items per pick-up and collection takes place on your regular recycling collection day. You can also have white goods (washer, dryer, stove, hot water heater, dishwasher, trash compactor, etc.) picked up curbside for free by calling Waste Management. This collection takes place about ten times each year.

If you anticipate having additional trash for a particular week, official over-flow bags are available from the DPS office (5 Jefferson Ave), the Collector's office (93 Washington St), Crosby's (125 Canal St), and Winer Brothers (86 Lafayette St) for \$12.50 for a five-bag roll. Salem residents can dispose of e-waste (refrigerators, freezers, TVs, computers, air conditioners, humidifiers, etc.) on announced e-waste collection dates (check www.salem.com/recycling). E-waste collection is typically the last Saturday of the quarter, from 8 a.m. to noon, at Salem High School (77 Willson Street). There is a \$20 charge for TVs, appliances containing Freon, and exercise equipment. Most other electronic waste will be accepted at no charge during e-waste collection. No commercial drop-offs or white goods are accepted at e-waste collection.

Free sharps disposal is available at the Fire Department, 48 Lafayette St. Mercury thermometers, batteries, and thermostats can be disposed for free at the Board of Health, 98 Washington St, 3rd floor, or the DPS building. Fluorescent light bulbs can be recycled at the DPS building. Unused or expired medication can be dropped off at the Police Station, 95 Margin St. See

www.salemma.gov/salem-police-department/licensing-services/pages/prescription-drug-return-disposal-program for details on the medication disposal program. Household hazardous waste collection days are typically held on a Saturday in the fall at Salem High School from 8 a.m. to noon for a \$20 fee per car (check www.salem.com/health).

Additional information about yard waste disposal, curbside compost collection, recycling bins, construction and demolition debris, recycling details, transfer station hours and rates, special recycling events, and more are available at www.salemma.gov/recycling and at www.greensalem.com.

