



WELCOME TO SALEM! New Residents' Guide 2019

INFORMATION INSIDE

Message from Mayor Kimberley Driscoll

Welcome to the great City of



Salem! I am so pleased that you have decided to make Salem your home.

Salem has much to offer, from world-class museums and cultural attractions, fine restaurants, and amazing architectural masterpieces, to an intriguing and infamous history, along with terrific retailers, diverse residential neighborhoods, an active waterfront, and a lively and historic downtown.

This is why Salem continues to attract new residents and hosts hundreds of thousands of visitors from around the globe each year!

Included in this guide is information to make your transition to Salem as easy and smooth as possible. We value resident input; always feel free to reach out to my office or any City department with your questions or concerns.

You can discover additional information about City programs, community events and groups, and more by visiting www.salem.com.

Again, welcome to Salem and best wishes for the future. If I can ever be of any assistance, please do not hesitate to contact me at 978-619-5600 or mayor@salem.com.

I will see you around town!

Kimberley Driscoll

Salem Residents Benefits

Living in Salem has many benefits. In addition to the numerous programs offered by the City, our own beaches, parks, and playgrounds, and a vibrant cultural and civic life through dozens of community and arts organizations, take advantage of **free admission to the Peabody Essex Museum** and the **Salem Witch Museum**, a **20% discount for non-commuting round-trip fares on the Salem-to-Boston Ferry**, and **free Salem Trolley rides throughout the summer**. Call the Mayor's Office at 978-619-5600 for more details.

Get City updates	Page 2
Voter registration	Page 2
Snow emergencies	Page 3
Street sweeping	Page 5
City officials	Page 5
Resident sticker parking	Page 6
Special events & Destination Salem	Page 6
Parks, playgrounds, and trails	Page 7
Salem Public Schools & Library	Page 9
Trash and recycling	Page 10



Get City updates

The City of Salem uses **CodeRED**, a rapid communication system, sometimes called "Reverse 911," to alert residents and businesses whenever there is an emergency or other notification. To sign up, click on the **CodeRED** link at www.salem.com/subscribe and fill out the form.

You can sign up to receive alerts on a land-line and cellphone, and by

text message or email. You can also customize the type of alert you would like to receive.

If you would like to subscribe to email lists for FYI Salem (the Mayor's newsletter), City News & Announcements, Meeting Notices, Employment Opportunities, or specific Board Agendas, visit <http://www.salem.com/subscribe> and fill out the form.

SeeClickFix

To report anything from a pot hole to a street light out, use SeeClickFix. Visit https://seeclickfix.com/salem_ma, or download the free app by searching for "See Click Fix" in your app store.



Dial 911 in the event of an emergency!

BUILDING SALEM

Mayor Kimberley Driscoll
City of Salem

BUILDINGSALEM.COM

BuildingSalem is a public information initiative where residents, businesses, and visitors can turn for the latest information about major construction projects in Salem. www.facebook.com/BuildingSalem

Find the City of Salem on social media!

www.facebook.com/CityofSalemMA
www.twitter.com/CityofSalemMA

City Contact Information

Council on Aging: 978-744-0924
Cemetery: 978-745-0195
Electrical: 978-745-6300
Fire (non-emergency): 978-744-1235
Golf Course: 978-744-2149
Harbormaster: 978-741-0098
Park & Recreation: 978-744-0733
Library: 978-744-0860
Parking: 978-745-8120
Police (non-emergency): 978-744-0171
Public Services: 978-744-3302
School Department: 978-740-1222
Transfer Station: 978-745-0226
Veterans Agent: 978-745-0883
Winter Island: 978-745-9430

City Hall and Offices: 978-745-9595

Assessor: ext. 41100
Building: ext. 42200
Clerk: ext. 41200
Collector: ext. 41300
Engineering: ext. 46100
Finance: ext. 41400
Health: ext. 42400
Human Resources: ext. 42000
Legal & Licensing: ext. 41500
IT: ext. 44000
Mayor: ext. 41000
Planning: ext. 42500
Purchasing: ext. 41600
Traffic: ext. 45000
Treasurer: ext. 42100

Voter registration

Any Salem resident who is a U.S. citizen and is at least 18 years old, is eligible to register to vote in Salem. If you are not yet 18 years old, but will be on or before the next election, you can register to vote by the deadline. You may also pre-register to vote if you are 16-17 years old.

Individuals wishing to register to vote may do so in the following ways.

1. Register Online at: <https://www.sec.state.ma.us/OVR/>
2. Register In-Person: Come to City Hall, 93 Washington St., Elections Office, Room #5.
3. Register by Mail at: <https://www.sec.state.ma.us/ele/elepdf/Voter-reg-mail-in.pdf>, fill it out, and mail it in.
4. Register to vote when you go to the Registry of Motor Vehicles. Make sure you receive an acknowledgment notice from the registry that you are registered.

Voters need not register annually. If voters continue to answer the annual city census and do not move to another city, they may continue to vote in Salem. Prior to State and local elections, there is a deadline to register to vote for that election 20 days prior.

If you have any questions regarding voting, i.e. are you a registered to vote in Salem or not, where you vote, the deadline to register, the election dates, how to absentee vote, etc. You may call the Election's Office at (978) 745-9595 ext. 41210; visit <https://www.salem.com/city-clerk>; or check on the Secretary of State's website at: <http://www.sec.state.ma.us/ele/eleidx.htm>.



Snow emergencies



Winter storms increase tension, as well as the risk of injury to members of the community who must travel during snow conditions. The City's goal is to quickly open the streets and make them passable so that essential traffic can safely negotiate roadways.

The City of Salem implements a snow emergency parking ban when it is anticipated that more than two inches of snow accumulation is likely. Parking regulations are strictly enforced to ensure that streets remain accessible for snowplows, fire apparatus, and other emergency vehicles. Any vehicle that impedes the snow removal process will be ticketed and towed.

When a snowstorm begins, the City salts all main roads and bus routes to prevent snow from binding to the pavement. Snow plowing begins when snow accumulates to 2 inches or more. After snowfall, main streets, bus routes, and residential streets with hills and intersections are salted and sanded to achieve bare pavement conditions. The City of Salem maintains a Plowing Plan to clear all streets in an orderly and strategic fashion. If, during a snow emergency, you have questions about a plowing issue, contact the Department



Find all snow-related City information online at www.salem.com/snow

of Public Services at 978-744-3302 or snow@salem.com.

Finding out

The City notifies residents about snow emergencies when parking on street is prohibited through CodeRED, email alerts, on SATV, and on www.salem.com. When a snow ban is in effect flashing blue lights at key intersections throughout the City are activated. The Salem Police snow hotline is 978-744-0171 ext. 166.



Snow Shoveling & Hydrants

City ordinance requires property owners to remove snow from bordering sidewalks within 6 hours after snowfall. The Council on Aging can try to match seniors who need snow shoveling assistance with available volunteers. Call the Council on Aging at 978-744-0924 for more information.

Residents can also help by "adopting" their nearest catch basin and fire hydrant and shoveling them out after snow storms. Find out more at

www.salem.com/home/news/salem-launches-adopt-hydrant-program.

Where to park

Check <http://goo.gl/maps/nmj6k> or on page 4 for all available locations for parking during a snow emergency on-street parking ban in Salem. Garage parking is \$5/24 hours or any fraction thereof during an emergency; lot parking is free. Vehicles must be removed at the conclusion of the snow emergency or they will be towed.

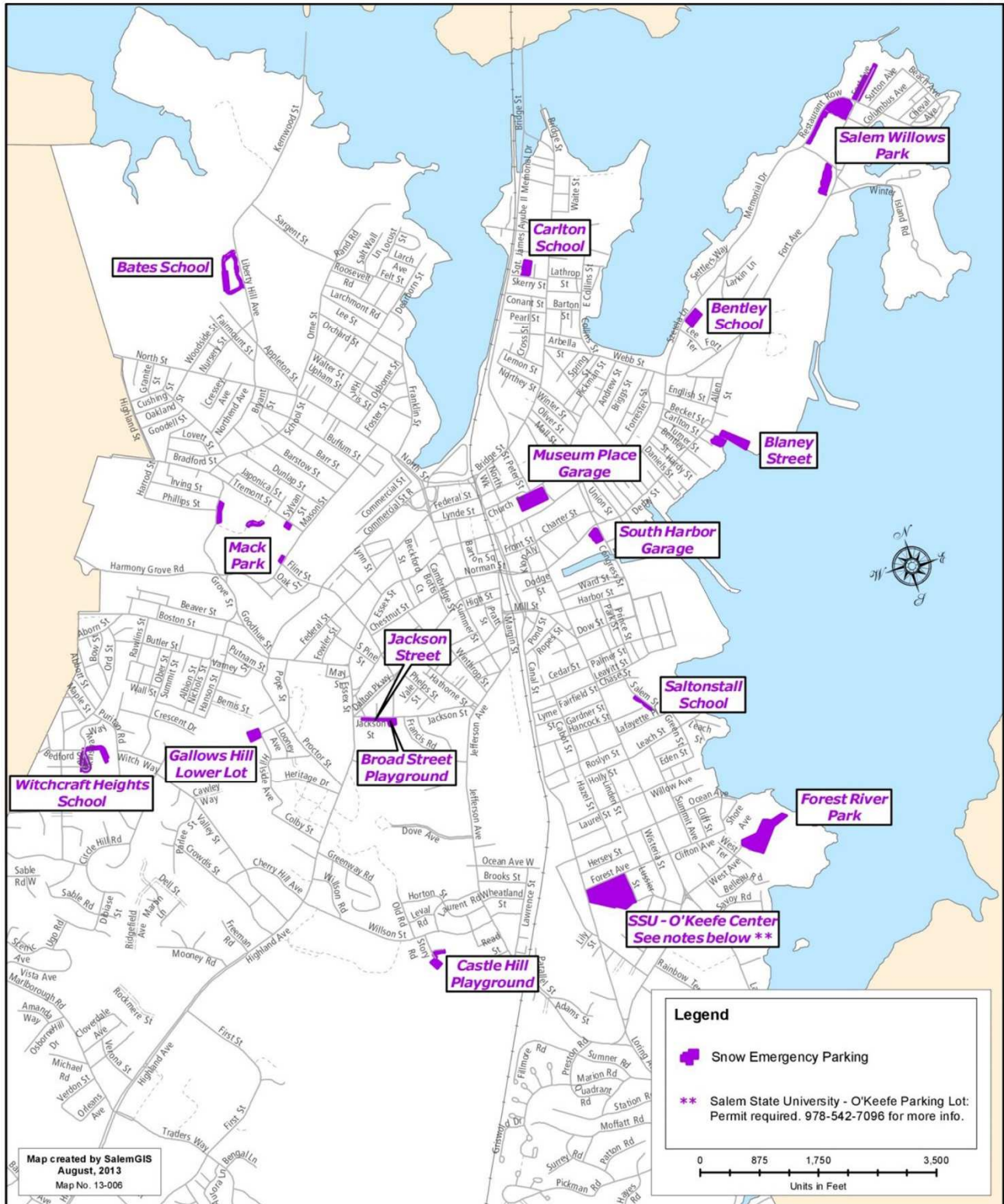
- Museum Place garage
- South Harbor garage
- All City metered lots excepting long-term Church Street lot
- Forest River Park lot
- Gallows Hill lower lot
- Mack Park lot
- Broad Street playground lot
- Castle Hill playground lot
- Salem Willows park lot
- Bentley School lot
- Saltonstall School lot (Salem St.)
- Collins Middle School lot (Jackson St.)
- Carlton School lot
- Witchcraft Heights School lot
- Bates School lot
- Blaney Street wharf lot
- Salem State University's O'Keefe Center lot (permit required; call 978-542-7096)



Mayor
Kimberley Driscoll

CITY OF SALEM MASSACHUSETTS

DESIGNATED ALTERNATIVE SNOW EMERGENCY PARKING



Street sweeping

Each year Salem's residential streets are swept from 7 a.m. to 3 p.m. Monday through Friday in early spring and early fall. Sweep days are scheduled for the day after your trash pick-up day. If your trash is picked up on a Friday, your street will be swept on the following Monday.

The odd and even sides of residential streets are swept on the same day. To find your street sweeping dates, visit www.salem.com each spring and fall.

In addition to residential street sweeping the City sweeps entrance corridors in May and in September, between 5 a.m. and 7 a.m.

Salem's entrance corridors are:

- Boston Street
- Bridge Street
- Derby Street
- Essex Street
- Loring Avenue
- Lafayette Street
- North Street
- New Derby Street

Temporary no parking zones are posted on roadways during sweeping.

On sweeping days, please remember to move your car to avoid being ticketed and towed. By moving your vehicle, you are helping to keep our City clean.

Please note that certain weather conditions prevent the use of street sweepers. During moderate to heavy rainfall and extreme cold temperatures



sweepers will not operate.

Streets are not swept on holidays. Also, certain public works emergencies, projects, staffing and/or equipment issues may cause the street sweeper to be unable to complete its daily route.

In these cases, the sweeper will return to your street on its next regularly scheduled day, if not sooner, if at all possible.

City officials

How to contact your City officials

Mayor

Kimberley Driscoll
mayor@salem.com
Salem City Hall
93 Washington Street
978-745-9595 x41000

City Council

Ward 1 Councillor
Robert McCarthy
rmccarthy@salem.com
148 Bay View Avenue
978-744-1759

Ward 2 Councillor
Christine Madore
cmadore@salem.com
20 Federal Street #8
978-414-5403

Ward 3 Councillor
Lisa Peterson
lpeterson@salem.com
68 Broad Street
978-219-9840

Ward 4 Councillor
Timothy Flynn
tflynn@salem.com
42 Sable Road
978-836-0017

Ward 5 Councillor
Josh Turiel
jturiel@salem.com
238 Lafayette Street
978-801-1673

Ward 6 Councillor
Beth Gerard
bgerard@salem.com
49 Larchmont Road
978-219-7249

Ward 7 Councillor
Stephen Dibble
sdibble@salem.com
74 Moffatt Road
978-744-7315

Councillor At-Large
Elaine Milo
emilo@salem.com
181 Marlborough Road
978-290-0821

Councillor At-Large
Thomas Furey
36 Dunlap Street #2
978-744-5963

Councillor At-Large
Domingo Dominguez
ddominguez@salem.com
18 Raymond Road
978-815-1089

Councillor At-Large
Arthur Sargent
sargeatlarge74@aol.com
8 Maple Avenue
978-745-1055

School Committee

Kimberley Driscoll, Mayor
Chair
mayor@salem.com
Salem City Hall
93 Washington Street
978-745-9595 x41000

Mary Manning
mary@marymanningsalem.com
16 Oliver Street
978-826-3384

Kristine Wilson
kwilson@salem.com
27 Beach Avenue
978-744-1381

Amanda Campbell
acampbell@salem.com
8 ½ Daniels Street

James Fleming
jfleming@salem.com
47 Buffum Street
978-744-8341

Manny Cruz
macruz@salem.com
73 Grove Street
978-219-9855

Ana Nuncio
anuncio@salem.com
20 Winter Street
978-414-5414



Resident sticker parking

If you live on a street that is posted as "Resident Parking Only," your vehicle is eligible for a resident parking sticker, provided it is registered in the City of Salem. Apply for your resident parking sticker at the City Collector's Office (93 Washington Street). The application form and a current listing of resident parking only zones are available at www.salem.com/collectors-office/pages/resident-sticker-parking-information.



The fee for a resident parking sticker is \$10. Place your sticker on the driver's side lower corner of the vehicle's windshield. A sticker only permits you to park on-street in your zone. For the complete list of streets in each of the six resident parking zones visit the City Collector's website. All posted parking restrictions still apply.



Residents may receive up to two visitor parking permits per household. Visitor permits may be used only when the visitor is visiting the household to which the permit is issued and cannot be replaced if lost. Hang a visitor permit on the vehicle's rear-view mirror so it is fully readable from the vehicle's exterior. Visitor permits cost \$1 each.



2-year stickers for parking at Winter Island, Forest River Park, and Kernwood Marina can be obtained by bringing your vehicle to the Dept. of Parks & Recreation (401 Bridge St.) The fee is \$20 (\$15 if resident is 60 years of age or older or a veteran). A second sticker can be bought for \$5. Only vehicles registered in Salem are eligible. License or proof of residency and vehicle registration are required at time of purchase.

Visit Salem.org to find more ways to explore Salem. The site features a complete calendar of events, as well as information on restaurants, shops, activities, and museums. While there you can also request a printed Salem Visitors' Guide and subscribe to weekly and monthly emails highlighting special programs, events, and activities for all ages.

ANNUAL SPECIAL EVENTS (WWW.SALEM.ORG)



Salem's So Sweet Festival

2nd week of February throughout Salem. Celebrate Valentine's Day with chocolates and ice sculptures. www.salemssosweet.com



Salem Farmers' Market

Thursdays, 3-7pm, mid-June through late October, in Derby Square. Over 30 vendors, live music, cooking demos, and much more. salemfarmersmarket.org



July 4th & Heritage Days

July 4, Derby Wharf: concert and fireworks display. The 2nd week of August is Heritage Days, with a Scooperbowl, Pizza Fest, arts events, and more.



Haunted Happenings

October. Fun-filled, family-friendly events all month make up America's premiere Halloween celebration. hauntedhappenings.org

Parks, Playgrounds, & Trails

Salem's parks and playgrounds, beaches, Winter Island, Salem Willows, Salem Common, and Olde Salem Greens Golf Course are among the finest public spaces on the North Shore.

Salem has 22 basketball courts, 20 playgrounds, 15 baseball diamonds, 12 tennis courts, two staffed beaches, a street hockey court, a skate park, and a pickleball court. These wonderful resources offer Salem residents many unique experiences for fitness, fun, and a stronger community.

Whether enjoying a park on your own or part of a program, Salem's open spaces, parklands, and water resources offer the opportunity of healthier lifestyles and fun for the entire family. Salem Park and Recreation programs are not just for children, either. Whether you are a youngster or a senior citizen or anything in between, there is a program for you, with more being added every year.

From youth basketball to boot camp, from swim lessons to art classes, there is something for everyone in the over 100 programs that the City offers. For more information about programs, parks, and resources contact the Parks, Creation, and Community Services department at 978-744-0924 or at www.salem.com/recreation.

Register online

Find a full listing of upcoming park and recreation programs and register online quickly at www.salemrec.com.

Salem Dog Park

Located at Leslie's Retreat Park on the North River, the Salem Dog Park is available to Salem residents and their canine friends. An annual "Pooch Pass" is required for all dogs using the park and may be purchased at 401 Bridge Street for \$25. To purchase a Pooch Pass you must show a current dog license, proof that your dog is current rabies and distemper, and is spayed or neutered. More information is at <http://www.salem.com/recreation/pages/salem-play-area-canine-exercise-space>.

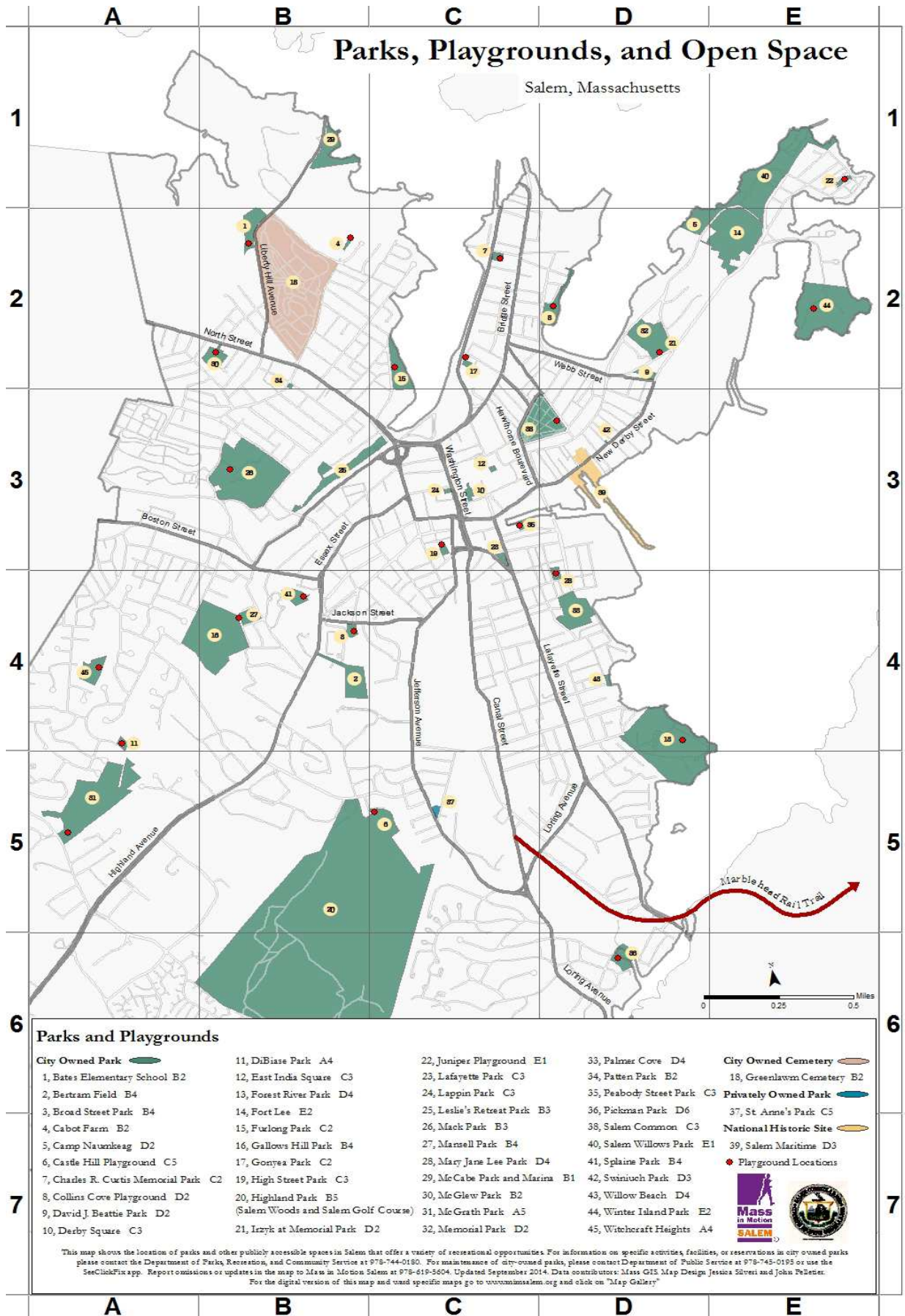
Special Facilities

In addition to the numerous parks, playgrounds, beaches, and open spaces, the City also offers a number of special facilities, some of which can be rented for private functions or events. These include Winter Island (www.salem.com/winter-island-park), Salem Willows band shell, Camp Naumkeag (www.salem.com/recreation/pages/camp-naumkeag), and the Salem Witch House (not available for rent) (www.witchhouse.info).

Salem Bike Path

Salem is a bike-friendly city, with bicycles welcomed on the Salem Ferry, a free public bike share program – Salem Spins, mountain biking trails in the Salem Woods, and the Salem Bike Path. The Salem Bike Path is a paved, multi-use path open to all non-motored uses and is part of the East Coast Greenway Alliance Trail System. Learn more about Salem's bike programs, rules, and amenities at www.salem.com/bicycling-advisory-committee.





Salem's Public Schools

Salem has six elementary schools – Bates, Bentley Academy Charter, Carlton, Horace Mann, Saltonstall K-8, & Witchcraft Heights – as well as the Early Childhood Center, Collins Middle School, Salem High School, Salem Prep, & New Liberty Innovation School. Learn more about Salem schools at www.salemk12.org.



Each elementary school is unique. Bates' focus is music and art, while Bentley is an in-district charter school. Carlton is an Innovation School and the Horace Mann is a lab school with a strong partnership with Salem State University. Witchcraft Heights emphasizes good citizenship and the Saltonstall has an extended calendar with mixed-age classes.



The Collins Middle School and Salem High provide supportive learning environments that prioritize core academics, habits of mind and learning, and technological literacy. Students are inspired to reach their full potential as responsible individuals, with the ability to think critically, problem solve, and collaborate and communicate effectively.



Salem Public Schools participates in the Parent-Child Home Program and places a strong emphasis on parental involvement and communication. A bilingual Parent Information Center is located in the Administrative offices at 29 Highland Ave and can be reached at 978-740-1225. Parent committees and online tools allow parents to further engage.



The Salem Public Library partners with the Salem Public Schools summer reading and lunch programs, access to digital resources for Salem students, and much more! Located at 370 Essex Street, the library offers bestsellers, local history, and Spanish language resources, as well as a full schedule of programming for children of all ages. www.salempl.org or call 978-744-0860.



Trash and recycling

The City's trash collection contractor picks up trash on a weekly basis and recycling bi-weekly. The pick-up date varies by neighborhood. The schedule is available online at www.salem.com/recycling-and-trash or by calling the trash and recycling office at 978-619-5673.



Trash and recycling may be left out after 6 p.m. the night before pick-up, but no later than 7 a.m. the morning of pick-up. Trash and recycling must be placed in the wheeled carts provided by City, with lids closed. Please do not put any plastic bags in your recycling. Any material placed outside the cart, with the exception of official orange overflow bags or scheduled bulky items, will not be collected.

To schedule a free bulky item collection, call Waste Management at 800-972-4545 at least 48 hours prior to your recycling collection day. Residents can schedule up to two bulky items per pick-up and collection takes place on your regularly scheduled recycling collection day. If you anticipate having additional trash for a particular week, approved over-flow bags are available from the DPS office (5 Jefferson Ave), the Collector's office (93 Washington St), Crosby's (125 Canal St), and Winer Brothers (86 Lafayette St) for \$12.50 for a five-bag roll. Salem residents can dispose of e-waste (refrigerators, freezers, TVs, computers, air conditioners, humidifiers, etc.) on announced e-waste collection dates (check www.salem.com). E-waste collection is the last Saturday of the quarter, from 8 a.m. to noon, at Salem High School (77 Willson Street). There is a \$20 charge for TVs, and appliances containing Freon, but most other electronic waste will be accepted at no charge during e-waste collection.

Free sharps disposal is available at the Salem Fire Department, 48 Lafayette St. Mercury thermometers and thermostats can be disposed for free at the Board of Health, 98 Washington St, 3rd floor, or the DPS building. Fluorescent light bulbs can be recycled at the DPS building. Unused or expired medication can be dropped off at the Salem Police Station, 95 Margin St. You can have white goods (washer, dryer, stove, hot water heater, dishwasher, trash compactor, etc.) picked up curbside for free by calling Waste Management at 800-972-4545 and following the prompts for residential collection. This collection takes place about ten times each year.

Additional information about yard waste disposal, curbside compost collection, hazardous waste disposal, recycling bins, construction and demolition debris, recycling details, transfer station hours and rates, special recycling events, and more are available at www.salem.com/recycling-and-trash and at www.greensalem.com.

