



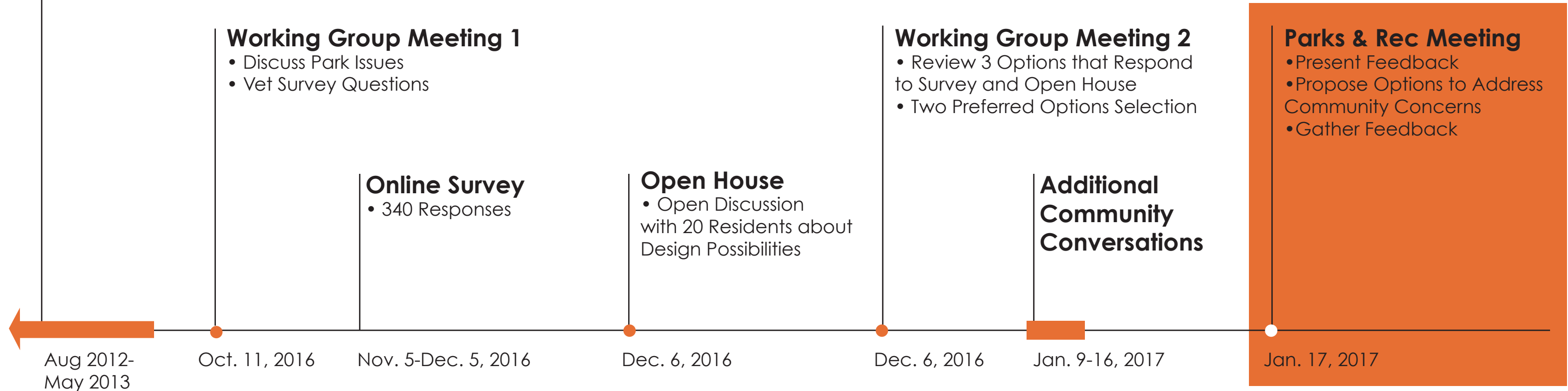
Lafayette Park, Salem

January 17, 2017 - Public Design Presentation

Michelle Crowley Landscape Architecture

Point Neighborhood Vision and Action Plan Engagement Process

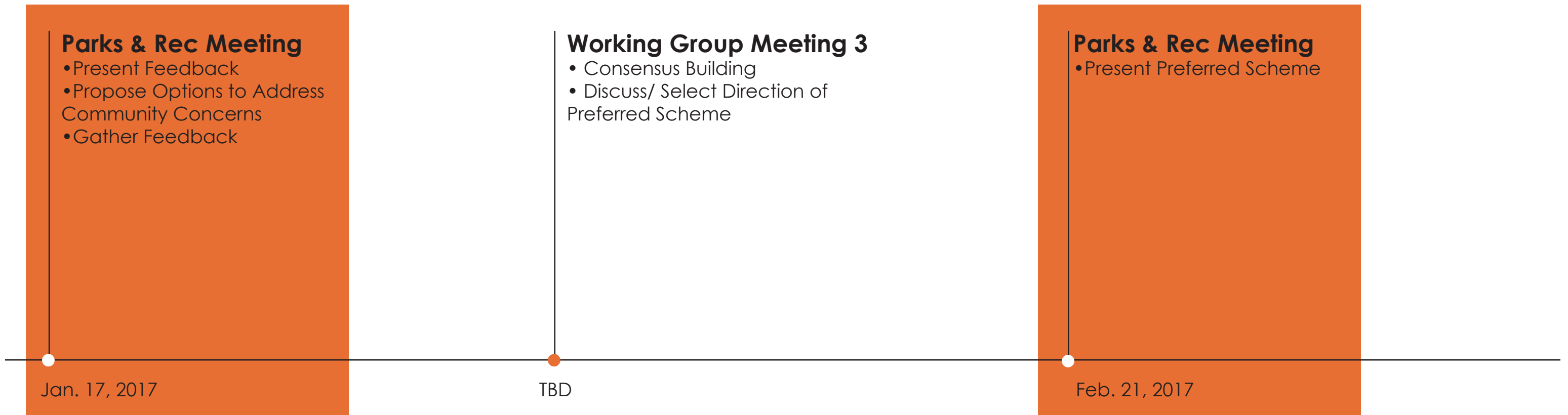
- Park identified as a needing updates



Lafayette Park, Salem

January 17, 2017 - Public Design Presentation

Current Design Process - History



Lafayette Park, Salem

January 17, 2017 - Public Design Presentation

Current Design Process - Going Forward



- Important Green Space at North End of Ward 5, within dense urban development with little green space.
- Borders Ward 1 and is 2-3 Blocks from Ward 2 and Ward 3.
- Location is 'Gateway' in and out of Downtown.
- Nearby Mary Jane Lee Park and Palmer Cover offer local playground and active play.



Recognizable Features

- Monuments
- Benches
- Bus Stop
- Art Boxes
- Flowers



Lafayette Park, Salem

January 17, 2017 - Public Design Presentation

Existing Conditions



Highly Valued Features

- Mature Trees
- Lawn
- Monuments

Recognized Issues

- Worn Cow Paths
- Steel Edging Failure
- Worn Lawn
- Broken Irrigation
- Dark Interior
- Obscured Sight Lines
- Limited Use



Lafayette Park, Salem

January 17, 2017 - Public Design Presentation

Existing Conditions



TREES / LAWN / PASSIVE RECREATION / “NATURE”

- Consistently, the role of this park as one of the few places for lawn and trees in the neighborhood was valued. The park is appreciated as a respite from the city, despite its size, and this should be enhanced.



MARKETS / PROGRAM

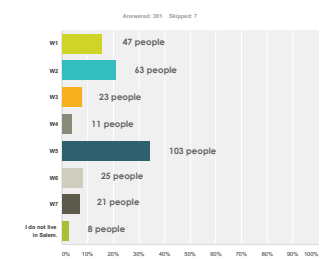
- The idea of farmers markets or craft fairs in the park was popular, though the idea of a plaza was not. This suggests a flexible space, perhaps a lawn or widened sidewalk, that could be used for such events without detracting from the “natural” setting.



LIGHTING AT NIGHT / VISIBILITY / GATEWAY

- Consistently, more lighting at night was expressed as a priority. While safety was definitely a concern for people, it was mostly at night time when visibility is poor. Lighting was also thought of as a way to make the park more of a gateway between downtown and the neighborhood.

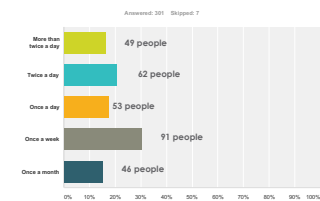
What Ward in Salem do you live in?
¿En cuál distrito de Salem vive usted?



Most people who answered this survey live in one of the four wards closest to Lafayette Park.



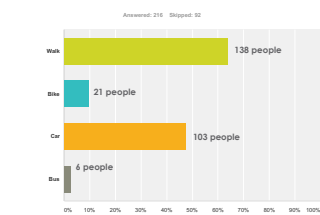
How often do you pass by Lafayette Park?
¿Cuántas veces pasas por el parque de la Lafayette?



People who answered the survey pass by Lafayette Park pretty often.



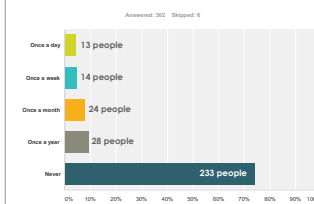
How do you usually arrive at Lafayette Park?
¿En cuál distrito de Salem vive usted?



People who answered usually walk to the park, though a lot of people get there by car too. Even though there is a bus stop, very few people who answered the survey arrive at the park by bus.



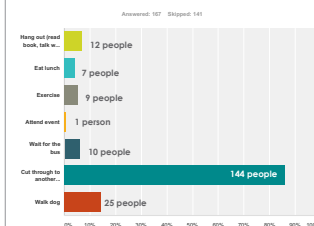
How often do you spend time in Lafayette Park?
¿Con cuál frecuencia pasas tiempo en el parque de la Lafayette?



People who answered the survey rarely spend time in the park.



What do you do at Lafayette Park?
¿Qué hace usted en el parque de la Lafayette?

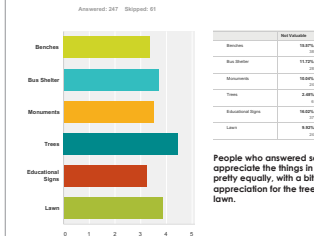


Most people who go to the park use it as a cut through to another location.

Walking a dog was the next most popular response, by at least double the next two most popular responses, including walking for the bus and hanging out.



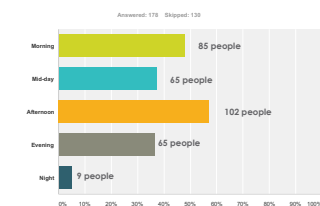
Rate the value of existing park features
Evalue el valor y lo que ofrece el parque actual



People who answered seemed to appreciate the things in the park pretty equally, with a bit more appreciation for the trees and the lawn.



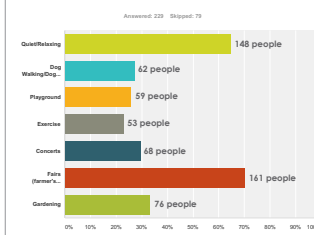
What time of day are you usually at the park?
¿A qué hora del día está usted usualmente en el parque?



People who answered the survey rarely spend time in the park at night. Most people seem to go there in the morning or afternoon.



How would you like to use the park in the future?
¿Cómo quisiera usted usar el parque en el futuro?

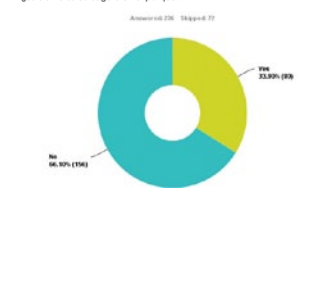


Farmer's Markets and Craft Fairs was the most popular idea for future uses of the park, and many people would like to feel comfortable sitting and relaxing.

Some write in ideas included: Skate park: 3 people, Parking lot: 2 people, Cafe: 2 people, Lending library: 1 person.



Do you feel safe in the park?
¿Se siente usted seguro en el parque?

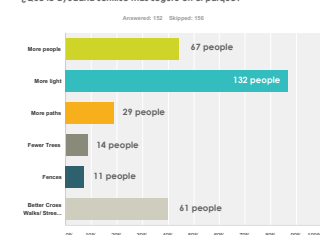


Lots of people do not feel safe in the park. The majority of comments cited illegal activity and a fear of current park users as the reasons. Cleanliness and lighting were also mentioned frequently.

Those who felt safe in the park often cited the clear sight lines and daylight as important factors.



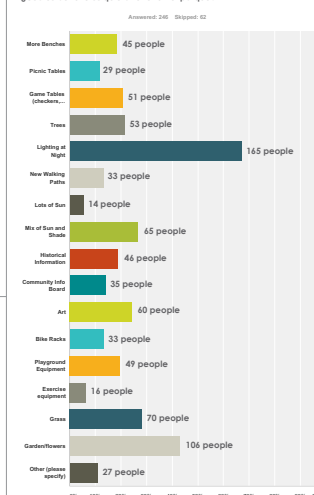
What would make you feel safe in the park?
¿Qué le ayudaría sentirse más seguro en el parque?



More light was the most popular choice on this list.

Write in answers included: Address Homelessness and Addiction: 47 people, More Police: 17 people, Change Benches: 4 people, Clean Up: 5 people, Greater Visibility: 5 people, Kids Programming: 3 people.

What amenities would you like to have in the park?
¿Cuáles beneficios quisiera tener en el parque?



Lighting at night was by far the most popular amenity that people selected in the survey. Gardens, flowers and grass were also popular.

Write in answers included: Trash Cans: 4 people, Food Trucks/Vendors: 4 people, Police/Cameras: 2 people, Community Garden: 2 people, Parking Lot: 2 people, Splash Pad: 1 person, Dog Park: 1 person, Better Bus Shelter: 1 person, Drinking Fountain: 1 person, Good Maintenance: 1 person, Skate park: 1 person.



Pre-1992 Condition



Lafayette Park, Salem

January 17, 2017 - Public Design Presentation

Historical Condition

1992 Design



Lafayette Park, Salem

January 17, 2017 - Public Design Presentation

Historical Condition



Existing Conditions

Mature Trees:

18 Street Trees

2 Elms

6 Pears

8 Zelkova

8 Flowering Trees

42 Total Mature Trees

Stonedust: 3,100 sf

Hardpack/Mud: 850 sf

Lawn & Planting: 17,225 sf



Lafayette Park, Salem

January 17, 2017 - Public Design Presentation

Existing Condition



Central Allee

Mature Trees:

18 Street Trees

2 Elms

6 Pears

2 Zelkova

7 Flowering Trees

33 Total Mature Trees

New Trees:

3 Zelkova

3 Canopy Trees

42 Total Trees

Stonedust: 4,315 sf

Concrete: 2,575 sf

Lawn & Planting: 13,300 sf



Lafayette Park, Salem

January 17, 2017 - Public Design Presentation

Proposals - Path and Tree Configurations



Curved Paths

Mature Trees:

18 Street Trees

2 Elms

3 Pears

8 Zelkova

8 Flowering Trees

39 Total Mature Trees

New Trees:

3 Canopy Trees

42 Total Trees

Stonedust: 3,033 sf

Concrete: 2,885 sf

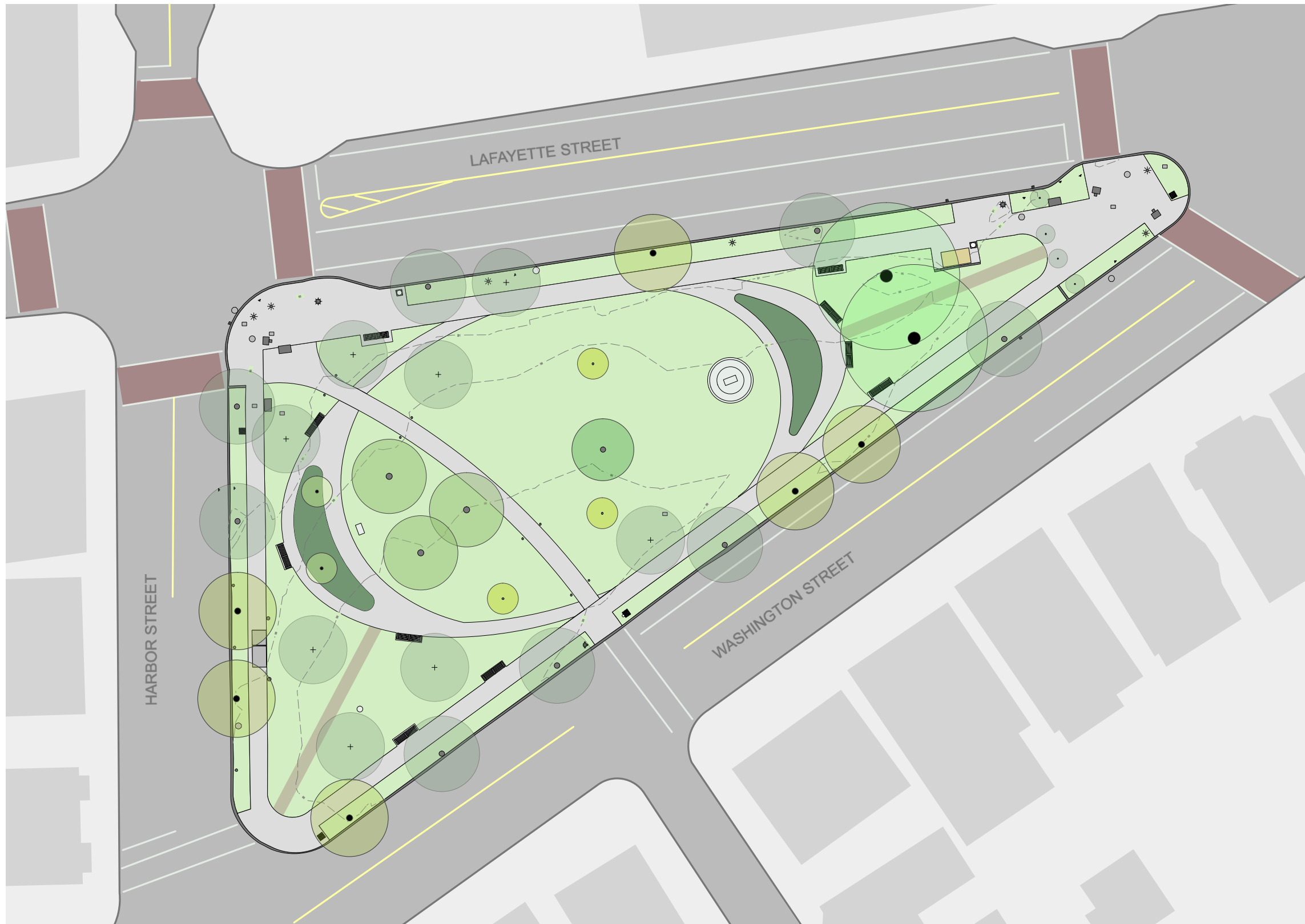
Lawn & Planting: 15,260 sf



Lafayette Park, Salem

January 17, 2017 - Public Design Presentation

Proposals - Path and Tree Configurations



Oval Lawn

Mature Trees:

18 Street Trees

2 Elms

1 Pear

3 Zelkova

5 Flowering Trees

29 Total Mature Trees

New Trees:

8 Canopy Trees

37 Total Trees

Stonedust: 554 sf

Concrete: 3,300 sf

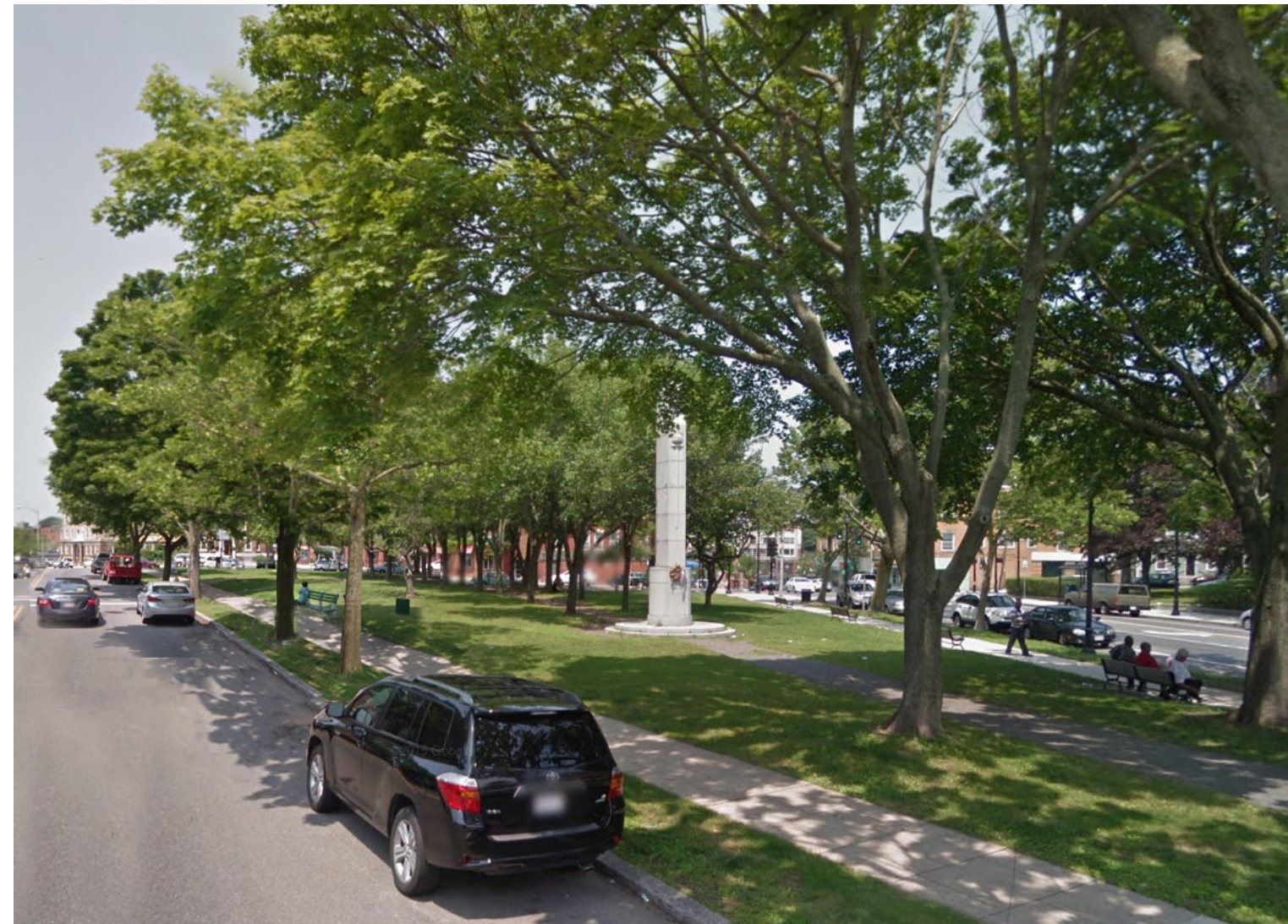
Lawn & Planting: 17,580 sf



Lafayette Park, Salem

January 17, 2017 - Public Design Presentation

Proposals - Path and Tree Configurations

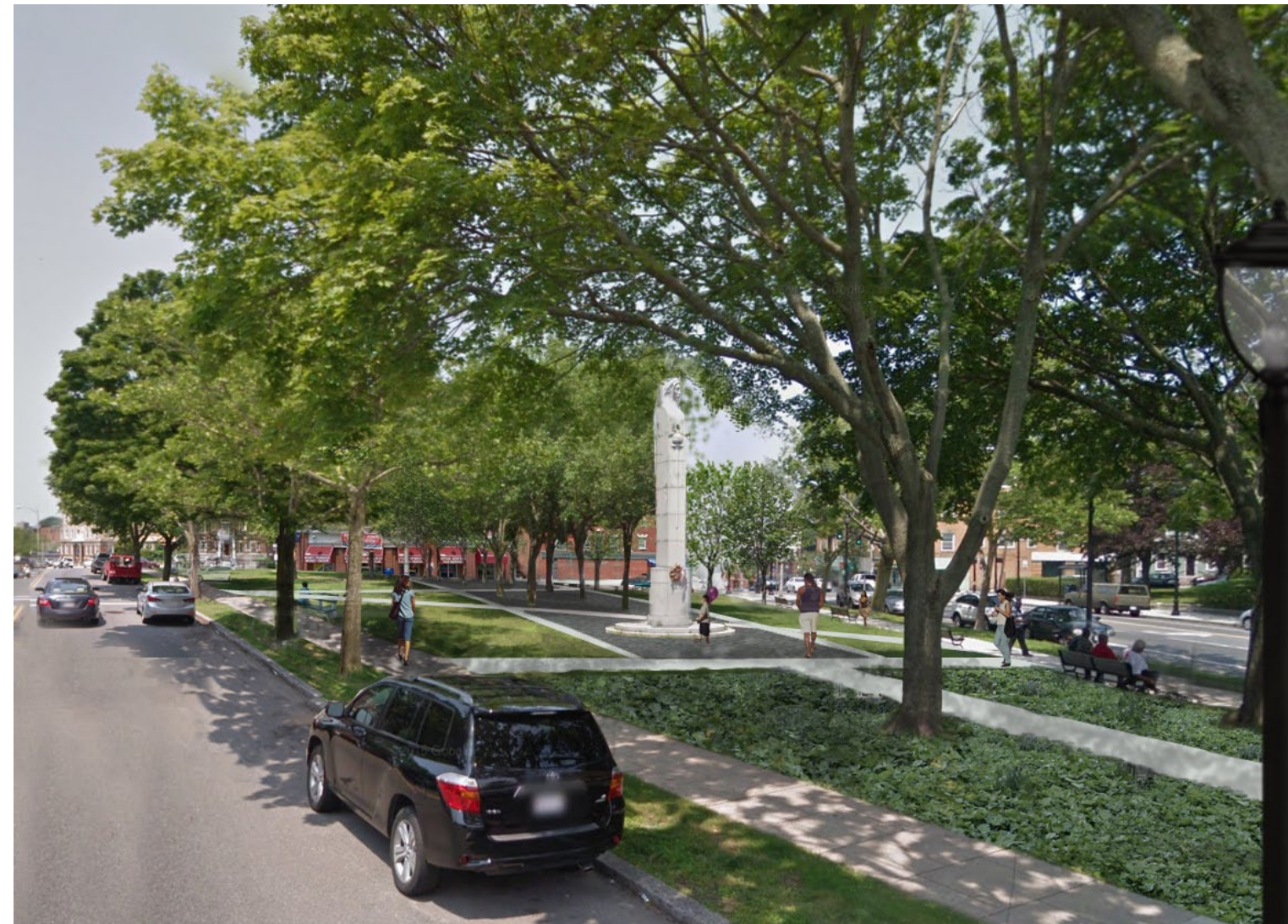


Lafayette Park, Salem

January 17, 2017 - Public Design Presentation

View - Existing





Lafayette Park, Salem

January 17, 2017 - Public Design Presentation

View - Allee



Lafayette Park, Salem

January 17, 2017 - Public Design Presentation

View - Curved



Lafayette Park, Salem
January 17, 2017 - Public Design Presentation
View - Oval

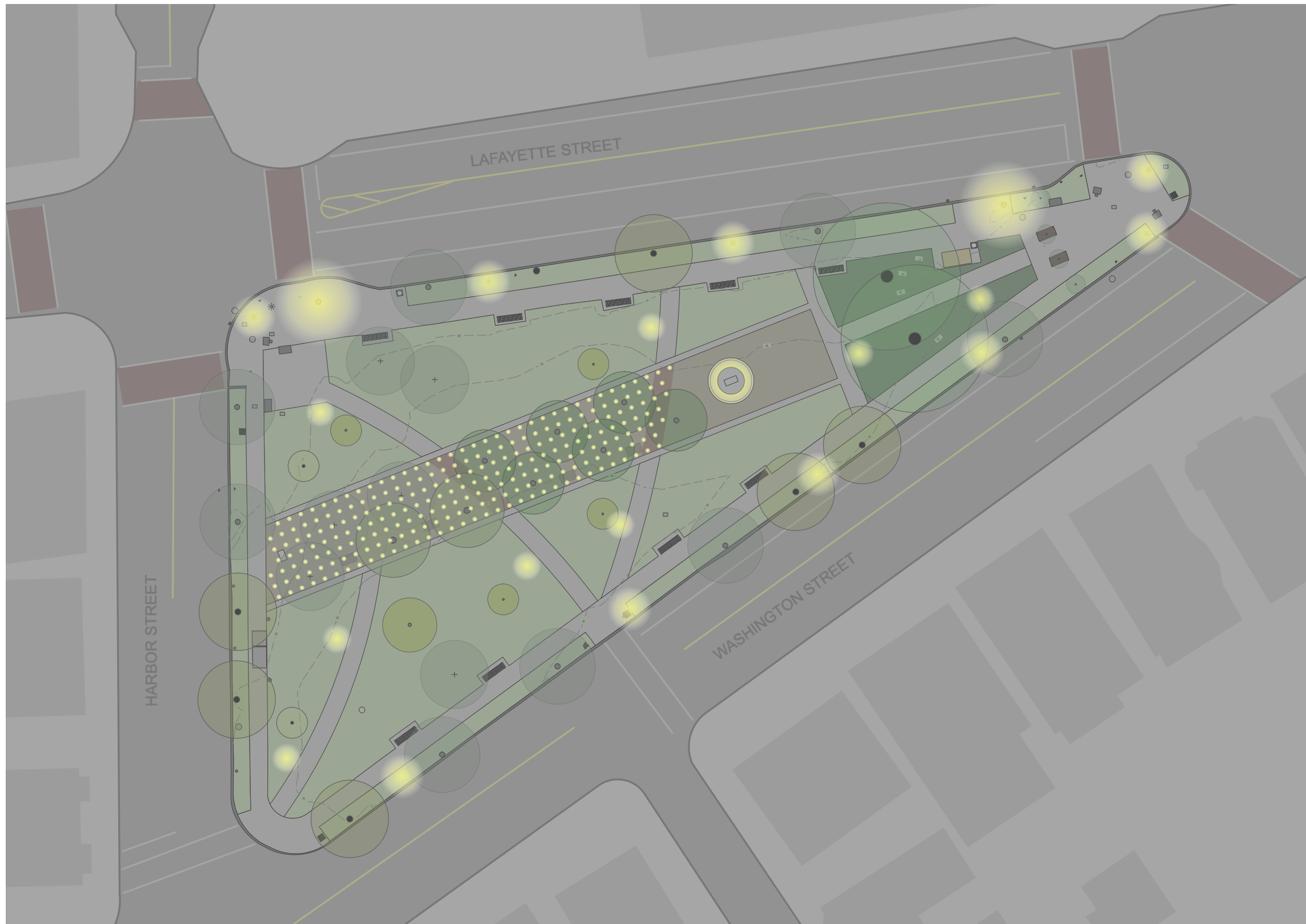
Existing Lighting



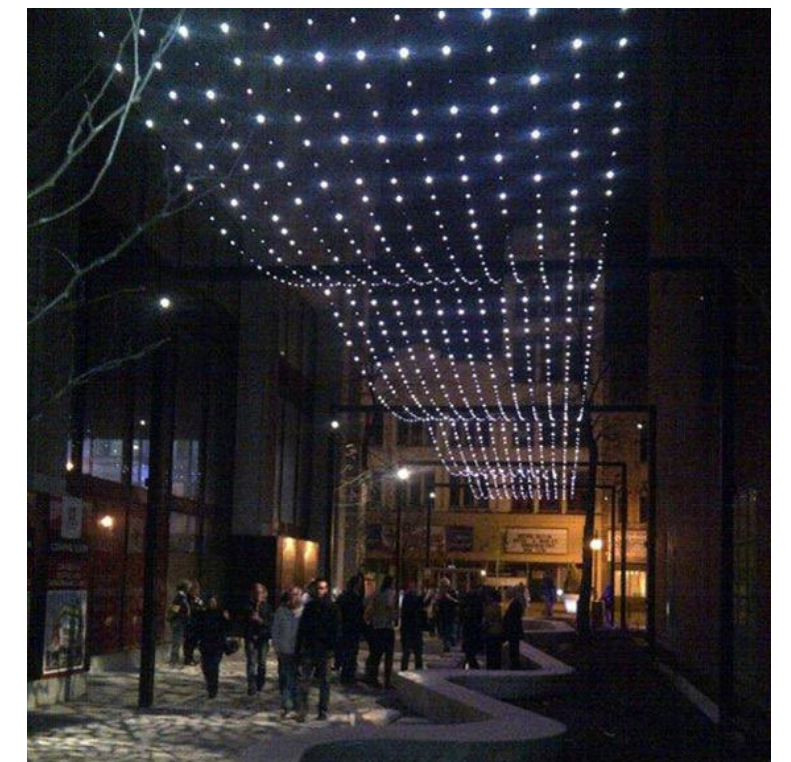
Lafayette Park, Salem

January 17, 2017 - Public Design Presentation

Proposals - Lighting



Central Allee Lighting

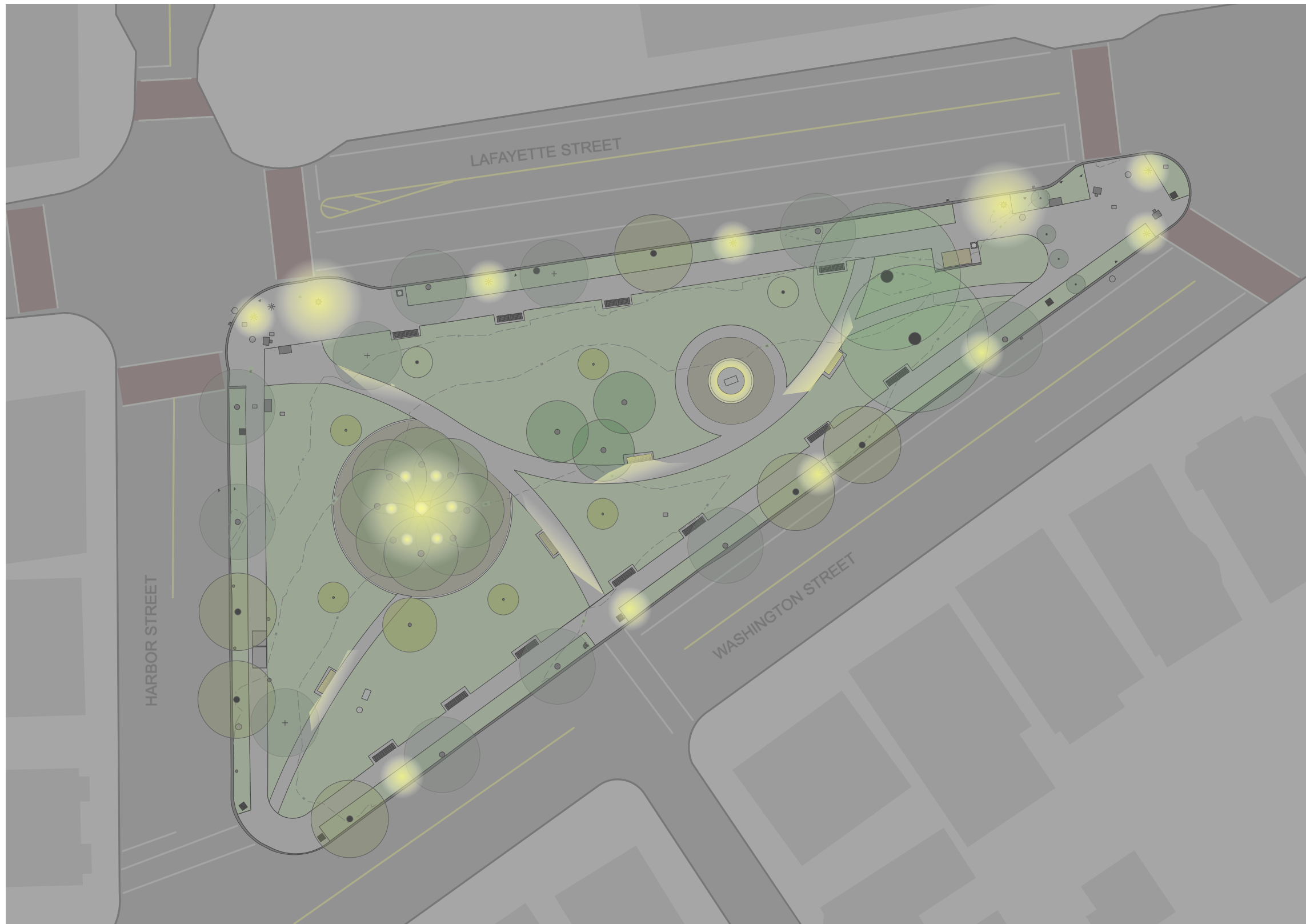


Lafayette Park, Salem

January 17, 2017 - Public Design Presentation

Proposals - Lighting

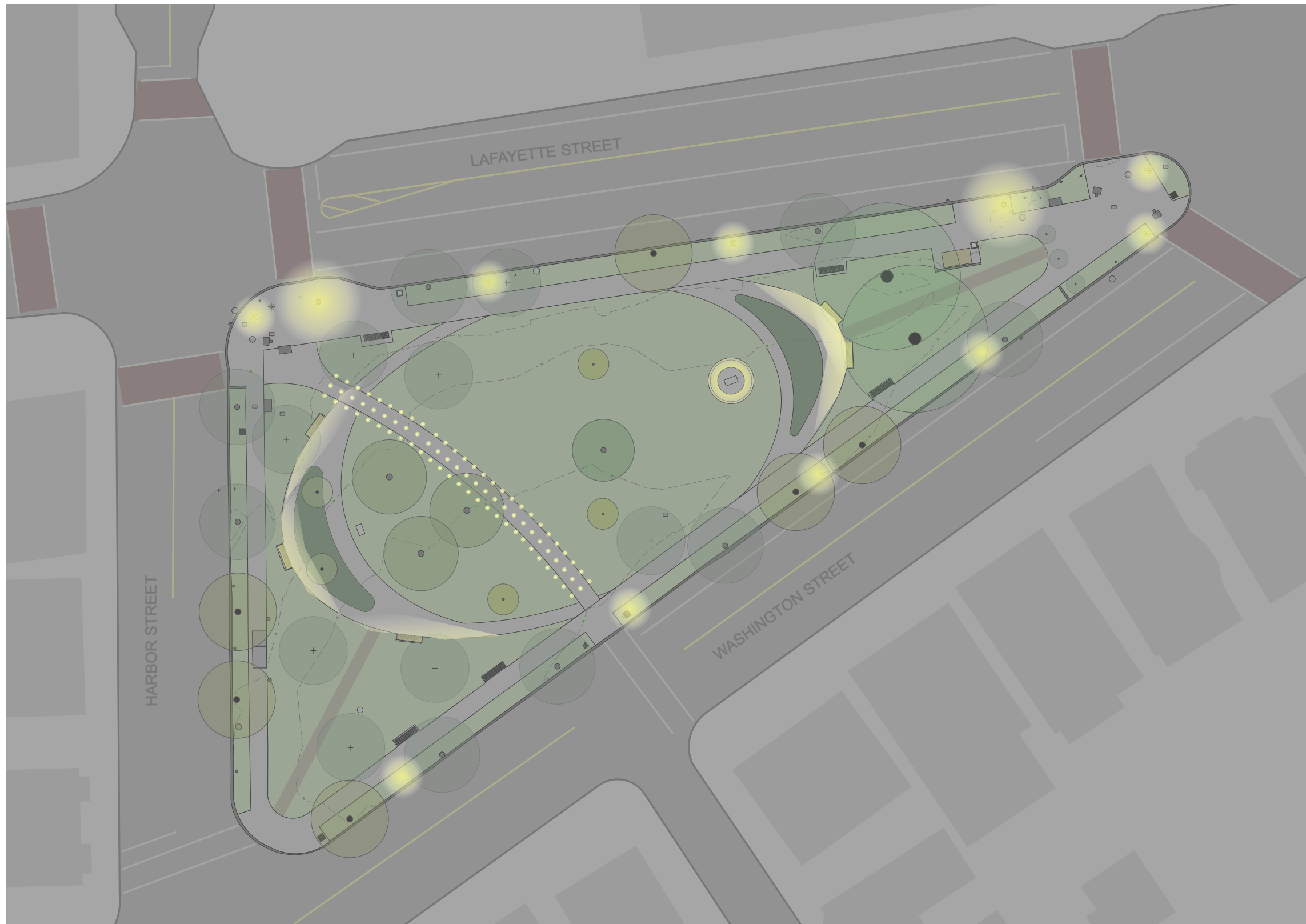
Curved Path Lighting



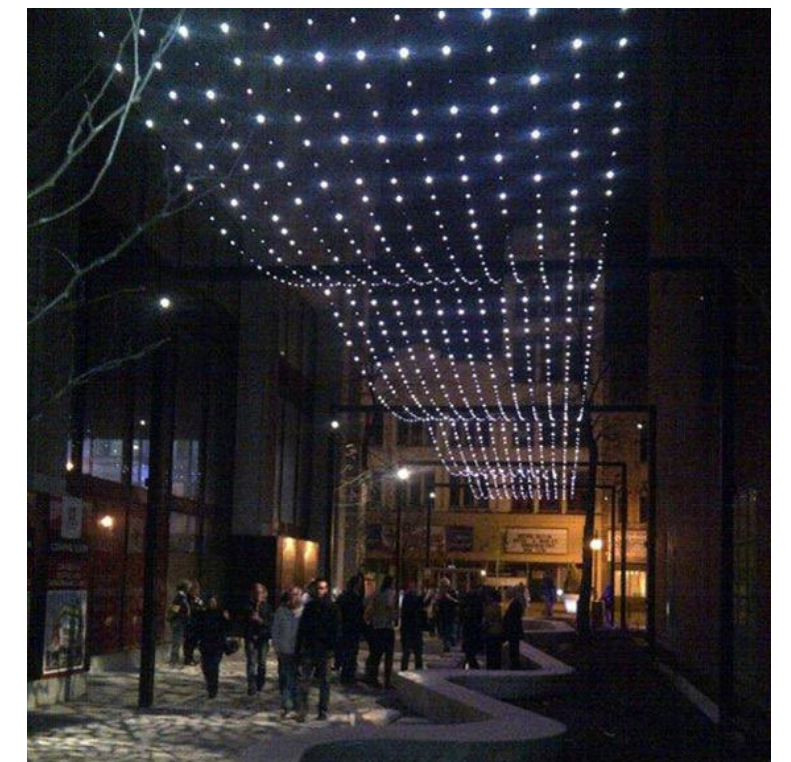
Lafayette Park, Salem

January 17, 2017 - Public Design Presentation

Proposals - Lighting



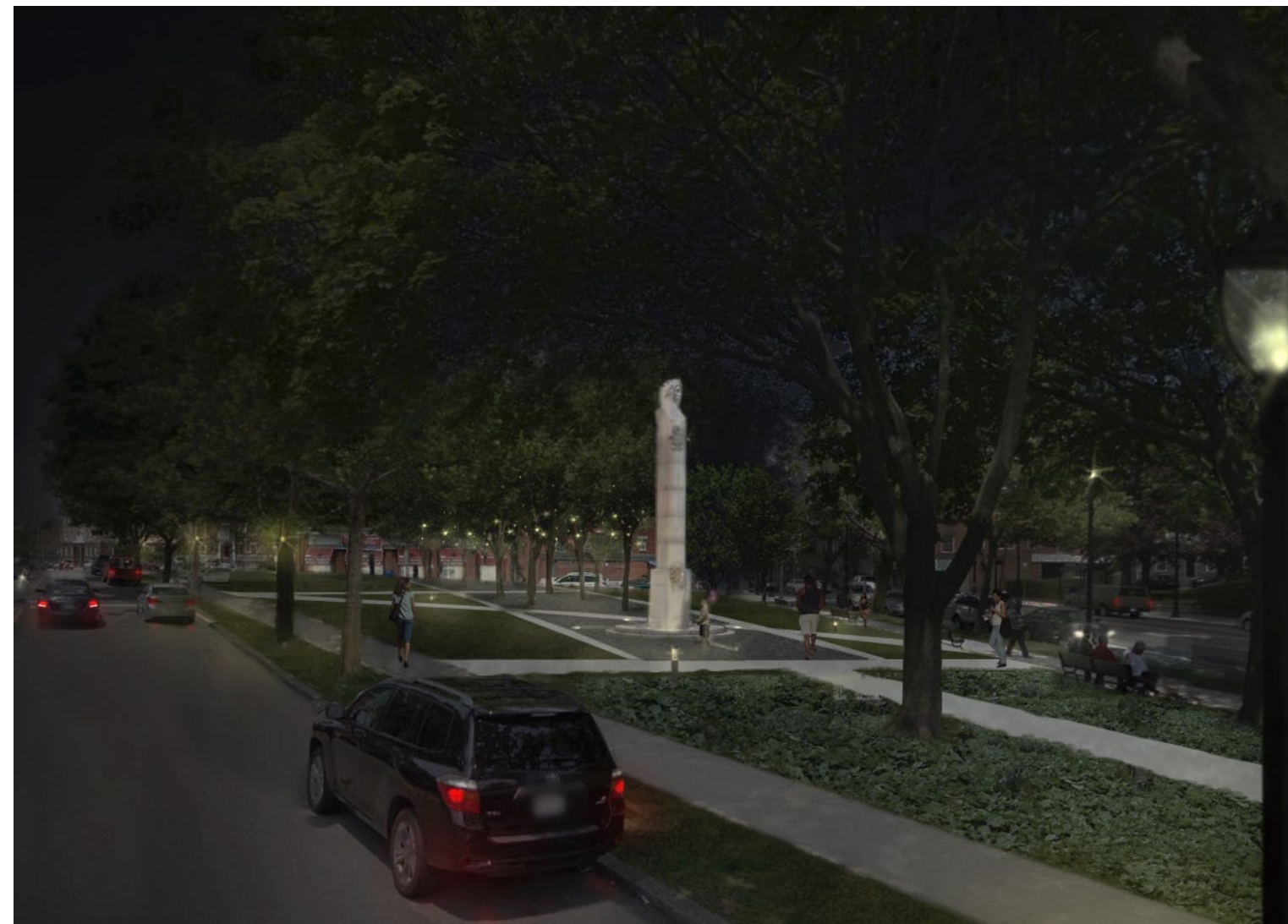
Oval Lawn Lighting



Lafayette Park, Salem

January 17, 2017 - Public Design Presentation

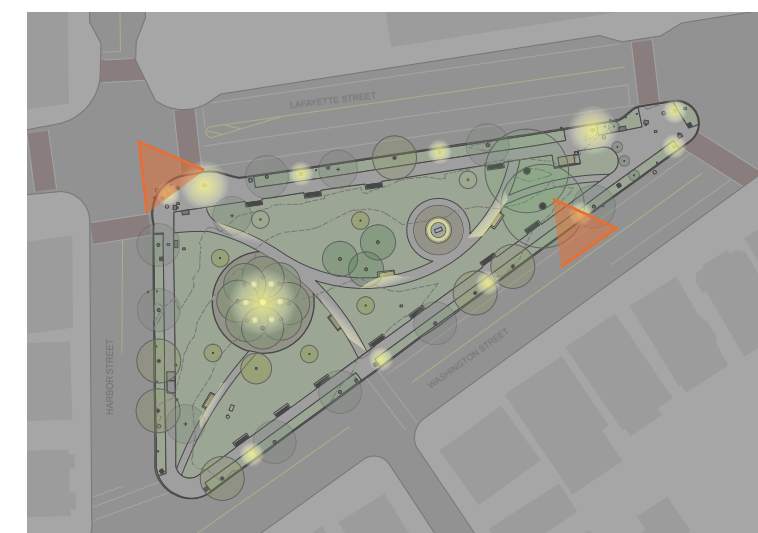
Proposals - Lighting



Lafayette Park, Salem

January 17, 2017 - Public Design Presentation

View - Allee



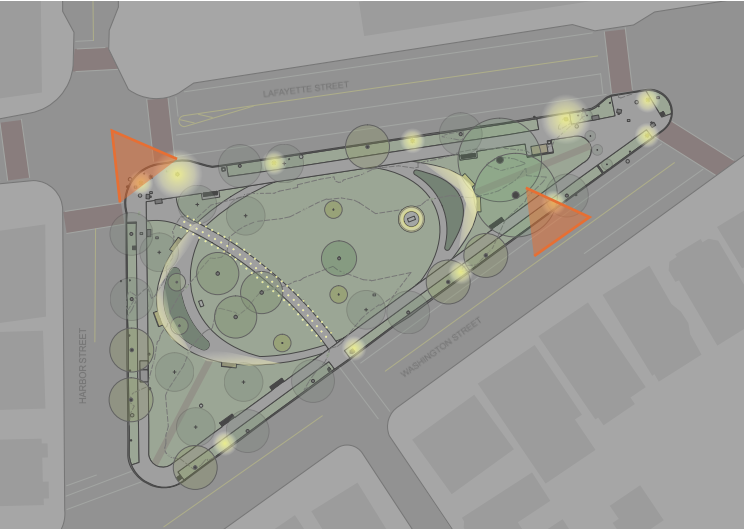
Lafayette Park, Salem

January 17, 2017 - Public Design Presentation

View - Curved



Lafayette Park, Salem
January 17, 2017 - Public Design Presentation
View - Oval





Lafayette Park, Salem

January 17, 2017 - Public Design Presentation

Three Options