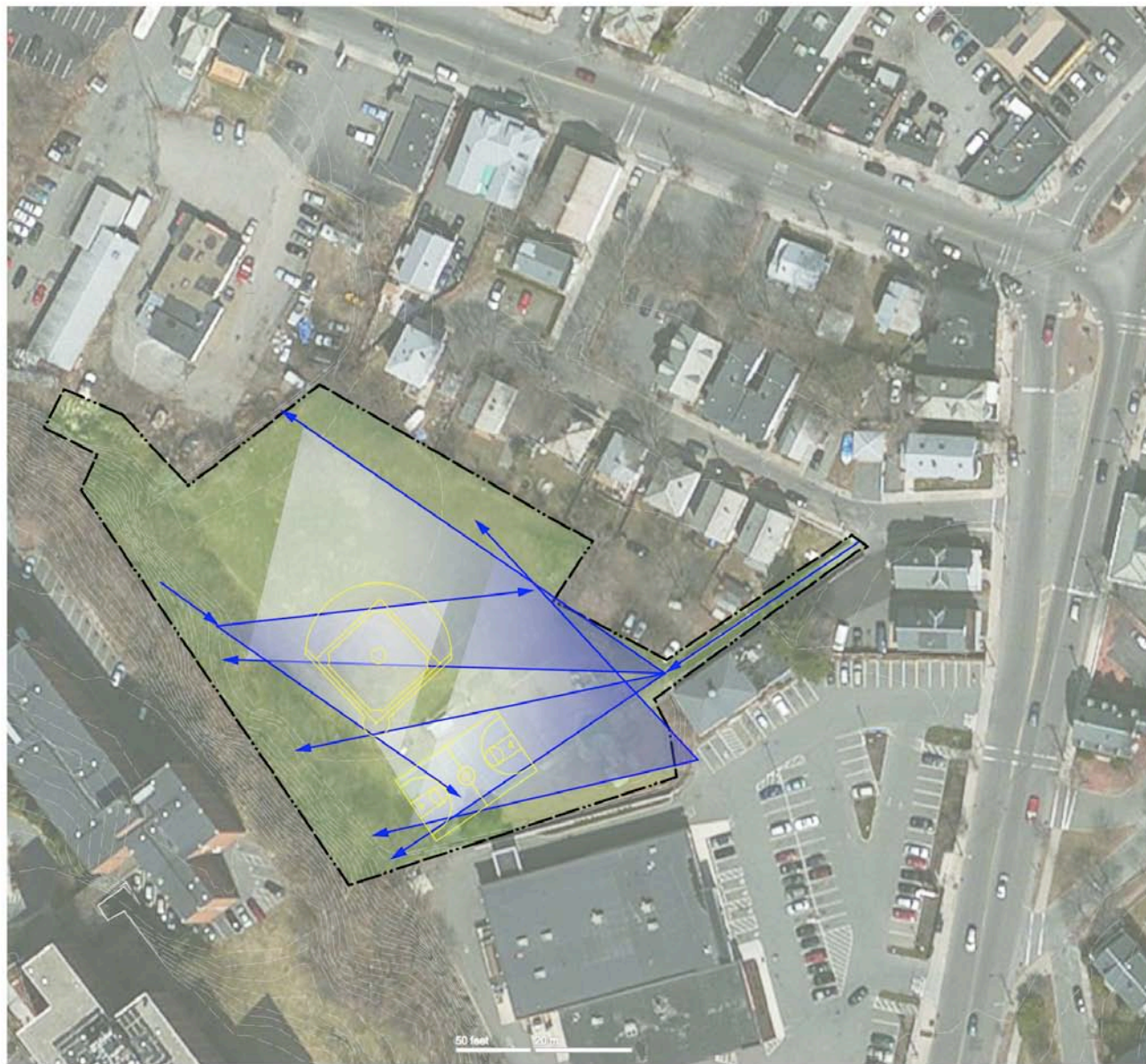






Aerial Photo- Summer

Splaine Park



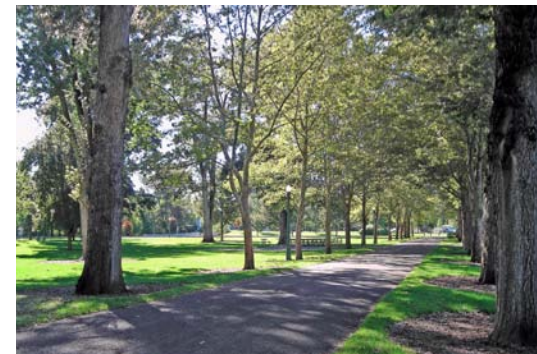
Views- Proposed



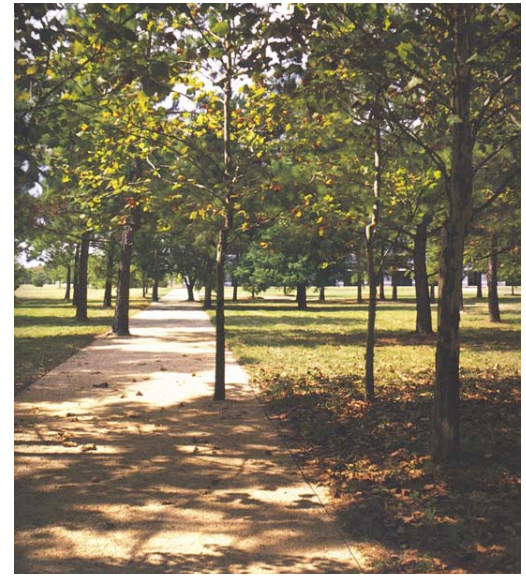
Splaine Park



Canopy- Proposed



Splaine Park



Circulation- Proposed

Splaine Park



Edges- May Street Entry



Splaine Park



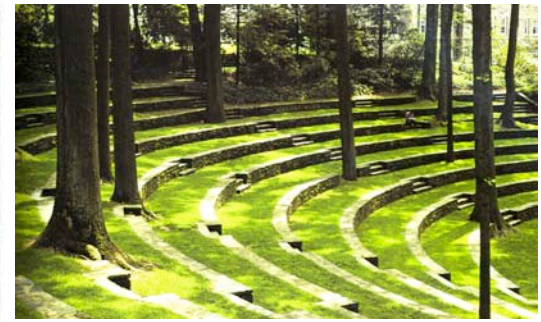
Edges- Embankment



Splaine Park



Edges- Wooded Hillside



Splaine Park



Edges- Gardens and Dog Run



Splaine Park



Illustrative Plan

Splaine Park



FLASHCAM-770K

FLASHCAM-770K SOLAR-CHARGED

FlashCAM-770K benefits:

- System is solar-charged battery operated, portable, and easy to install
- Operating range-up to 100 feet
- Sensing device-pyroelectric motion detector
- Camera-12 mega pixel Digital Camera resolution
- Camera Memory-2.0 Gigabyte Secure Digital Memory Card
- Photographs per event-user selectable 1,2,3, or 4
- Customize the 14-second voice message to suit your needs
- Operates in total darkness
- Optical Zoom-four selectable discrete ranges
- Field-of-view-82 feet at a distance of 100 feet
- System operates automatically 24/7
- Monitor system status with Keyfob remote controller
- Ruggedized construction makes the system resistant to vandalism





KIM LIGHTING

Type:
Job:
Catalog number:

VRB3 / / /
Fixture Electrical Module Luminaire Finish (includes top cap and shaft) Options
See page 2

VRB3 Round Bollard

Single Function, Vandal-Resistant, Aluminum Shaft

revision 11/13/09 • vrb3.pdf

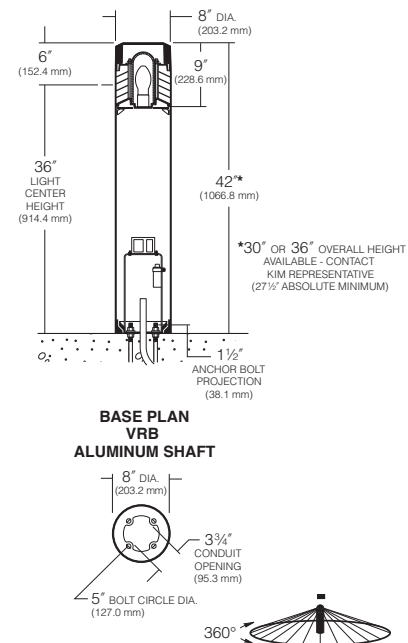
Approvals:

Date:
Page: 1 of 3

Specifications

VRB Models
70 to 100 watt
Medium Base Lamps
42 watt Compact Fluorescent

VRB3 - Single Function Luminaire (Aluminum Shaft)
Maximum weight: 30 lb



© 2009 KIM LIGHTING • P.O. BOX 60080, CITY OF INDUSTRY, CA 91716-0080 • TEL: 626/968-5666 • FAX: 626/369-2695

5616509317

Flat Top Cap: One-piece sand-cast 3/16" minimum thickness, secured to louvers by concealed allen screws in keyhole slots. For relamping access, allen screws shall not require complete removal.

Louvers: Aluminum die-cast with vertical support ribs at 90° intervals. Horizontal louver blades shall have a 1 3/4" depth, a 65° upward pitch and provide light source cutoff above horizontal. Louver assembly shall be secured to shaft by four internal tie rods.

Lamp Enclosure: One-piece tempered molded glass with internal flutes and full gasketing at bottom edge.

Socket: Porcelain medium base socket rated 4KV for HID and incandescent. Plastic socket for Fluorescent.

Fixture Head: Allows flow-through ventilation around and above the lamp enclosure.

Shaft: One-piece extruded aluminum, .125" wall thickness with a heavy cast aluminum twist-lock anchor base concealed within the shaft. Concealed set screws shall lock shaft onto the cast anchor base.

Ballast: Factory mounted to rigid harness attached to the anchor base. Wiring shall be supplied from the socket for field connection to the prewired ballast components. **HID:** High power factor with starting temperatures of -20°F. for PMH and -40°F. for HPS lamp modes. **26W, 32W, 42W Fluorescent:** High power factor with starting temperature of 0°F.

Anchor Bolts: Four 3/8" x 10" + 2" zinc plated L-hooks, each with two nuts, washers and a rigid pressed board template.

Finish: Super TGIC thermoset polyester powder coat paint, 2.5 mil nominal thickness, applied over a titanated zirconium conversion coating; 2500 hour salt spray test endurance rating. Standard colors are Black, Dark Bronze, Light Gray, Stealth Gray™, Platinum Silver, or White. Custom colors are available.

CAUTION: Fixtures must be grounded in accordance with national, state and/or local codes. Failure to do so may result in serious personal injury.

Listings and Ratings		
UL cUL 1598*	—	25C Ambient
IP46 Rated	FS = Fully Shielded ²	CE

*Suitable for wet locations

²Dark Sky Legislation Compliant

KIM LIGHTING RESERVES THE RIGHT TO CHNGE SPECIFICATIONS WITHOUT NOTICE.



Path Lighting

Splaine Park



Lighting Diagram

Splaine Park



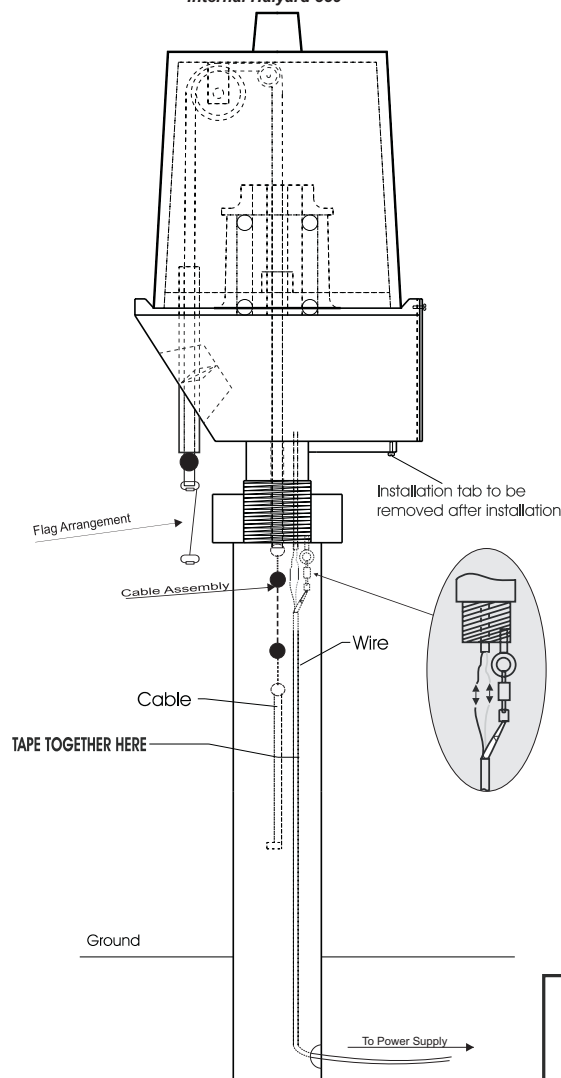
Lighting Diagram

Splaine Park

ILLUMINATOR

Internal Halyard 359°

THE INFORMATION CONTAINED IN THIS DRAWING IS THE SOLE PROPERTY OF WATTS MACHINE & FABRICATION COMPANY. ANY REPRODUCTION IN PART OR IN WHOLE WITHOUT WRITTEN PERMISSION OF WATTS MACHINE & FABRICATION COMPANY IS PROHIBITED.			
Watts Machine & Fabrication			
DRAWN JPW	1-27-04	THE FLAG COMPANY	
CHECKED DOW	1-27-04	FLAGPOLE BEACON™	
DESIGNED DOW	1-27-04	SIZE	DWG. NUMBER
APPROVED MIKE L.	1-27-04	A	INT-W-01
SCALE None	REV -	SHEET 1 OF 1	



BULB OPTIONS

120 volt Halogen Bulb
(uses carbon rod brushes)
or
12 volt Halogen or LED Bulb
(uses solid copper rod brushes)



Customer P.O. #: _____ Date: _____ Customer Name: _____
 Factory Order #: _____ Quantity: _____ Project Name: _____
 Pole Sections: _____ Finish: _____ Architect Name: _____

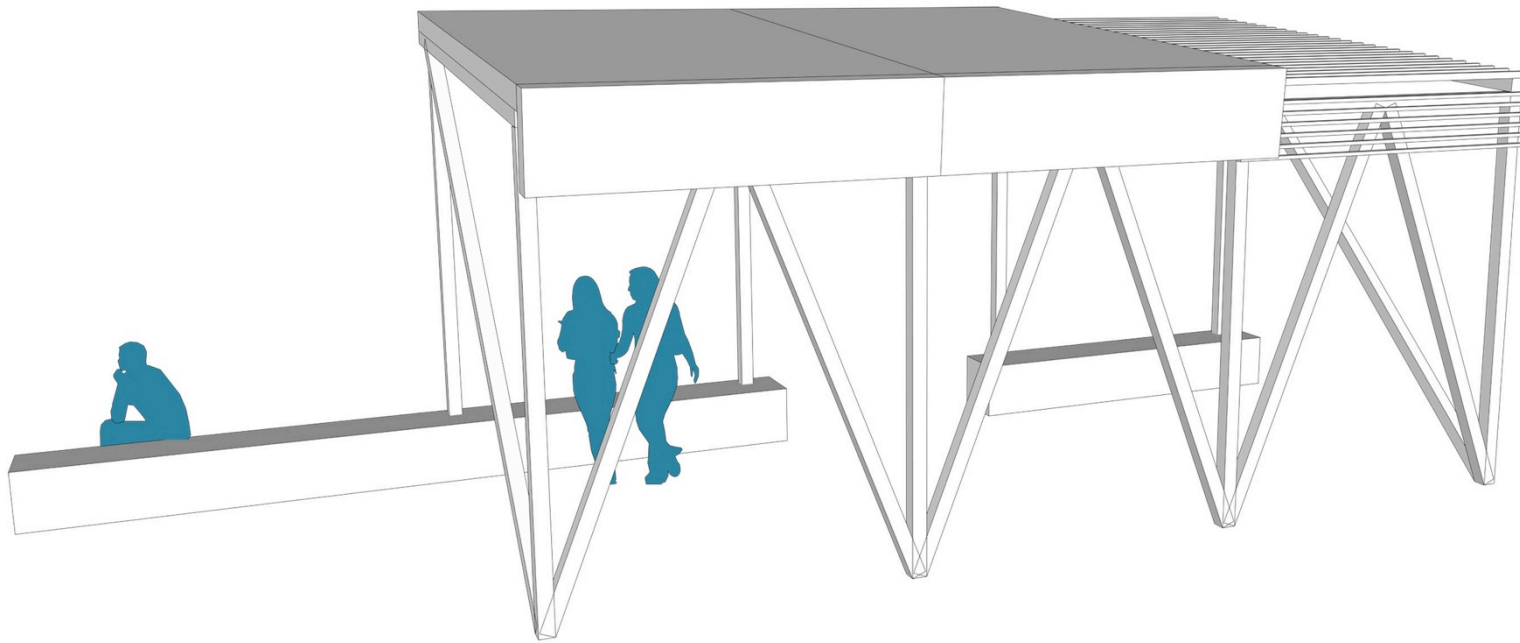
Memorial

Splaine Park



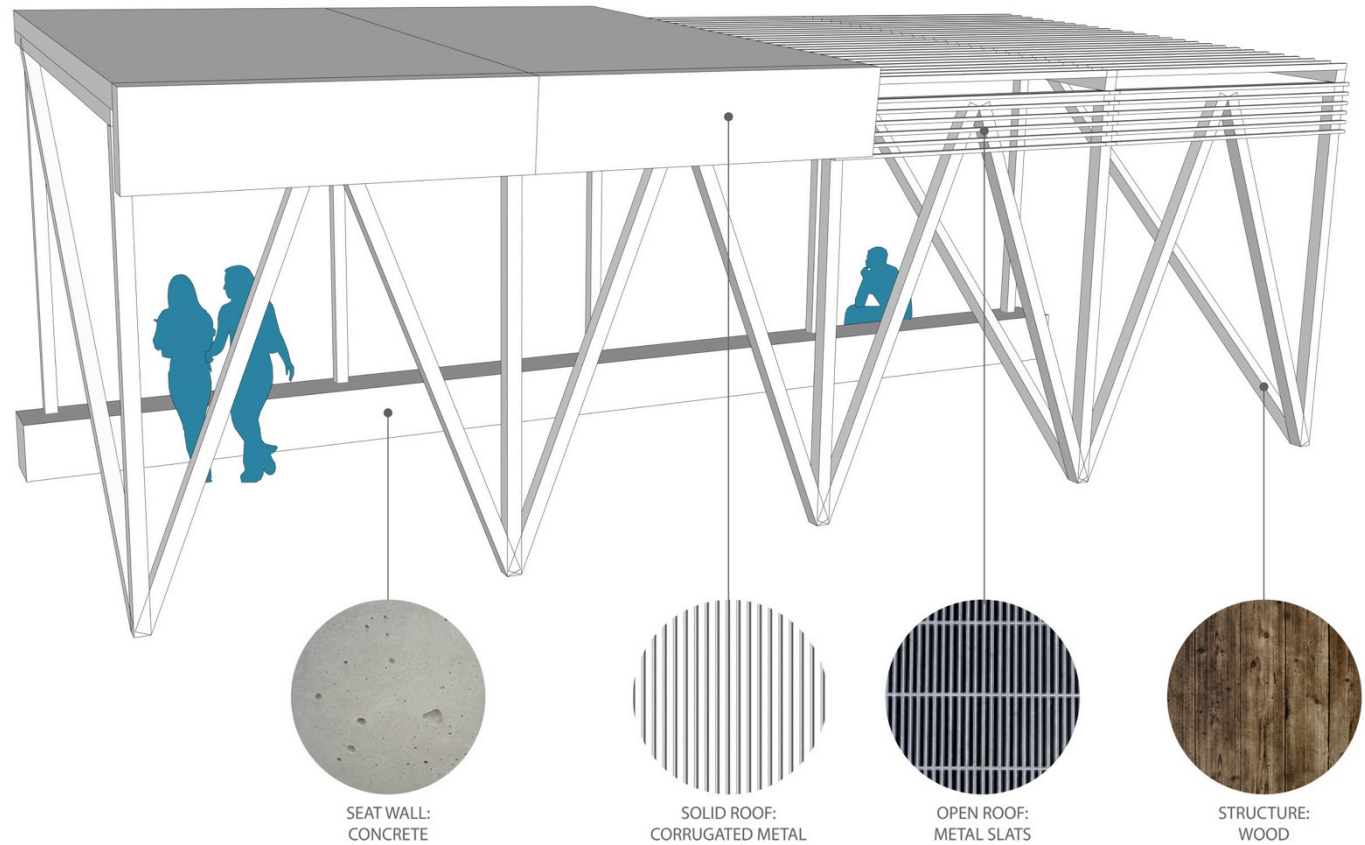
Play Equipment

Splaine Park



Pavilion Option 1

Splaine Park





Illustrative Plan

Splaine Park



May Street- Existing

Splaine Park



May Street- Removals

Splaine Park



May Street Option 1

Splaine Park



May Street Option 2

Splaine Park



Illustrative Site Plan

Splaine Park



CVS Wall- Existing

Splaine Park



CVS Wall- Removals

Splaine Park



CVS Wall- Embankment

Splaine Park



CVS Wall- Play Options

Splaine Park



Illustrative Site Plan

Splaine Park