

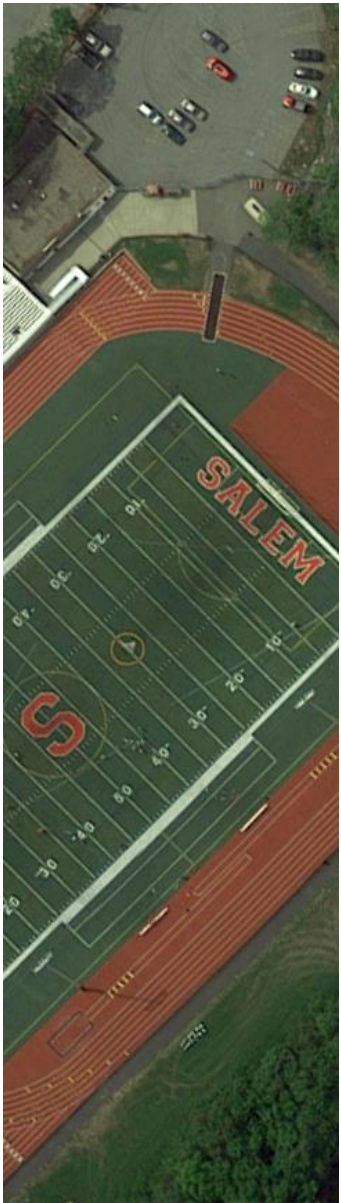
BEACON

ARCHITECTURAL ASSOCIATES

Phase 2 Improvements to Captain John Bertram Field

Salem, Massachusetts

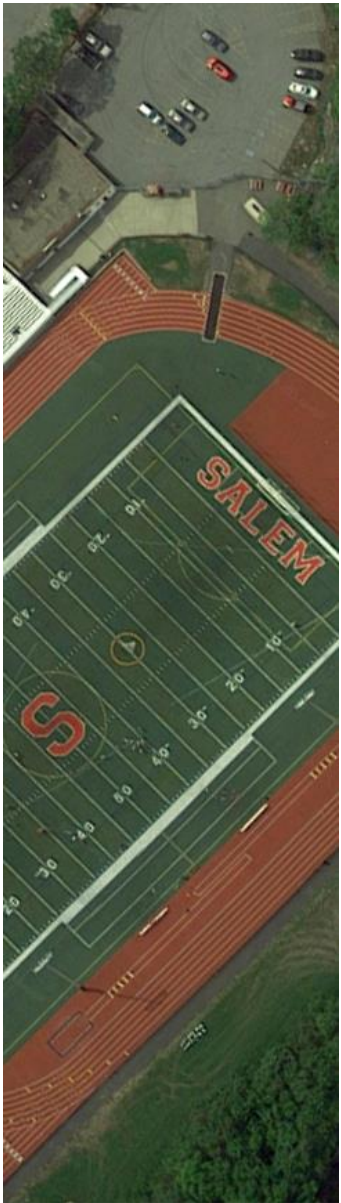




PROJECT GOALS

- Improve Facilities In 5 Areas
 1. Public Amenities
 2. Athletic Changing Facilities
 3. Concessions
 4. Press Box
 5. Entrances and Circulation at Bertram Field

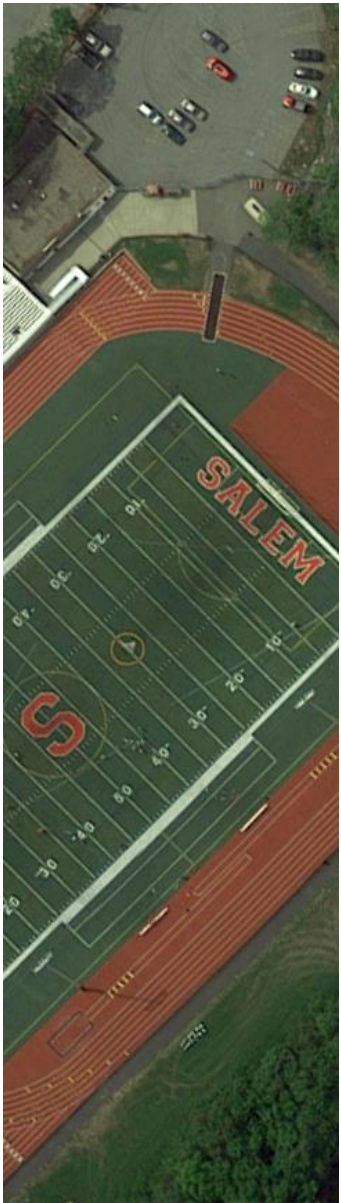




METHODOLOGY

- Bi-weekly meetings with City of Salem, MA
 - Park & Recreation Department
 - School Department
 - Athletics
 - Project Management
 - Other Departments
 - Engineering, Public Services, Police, Fire, Health
- Public meetings with Stakeholders
- Site visits to neighboring athletic fields

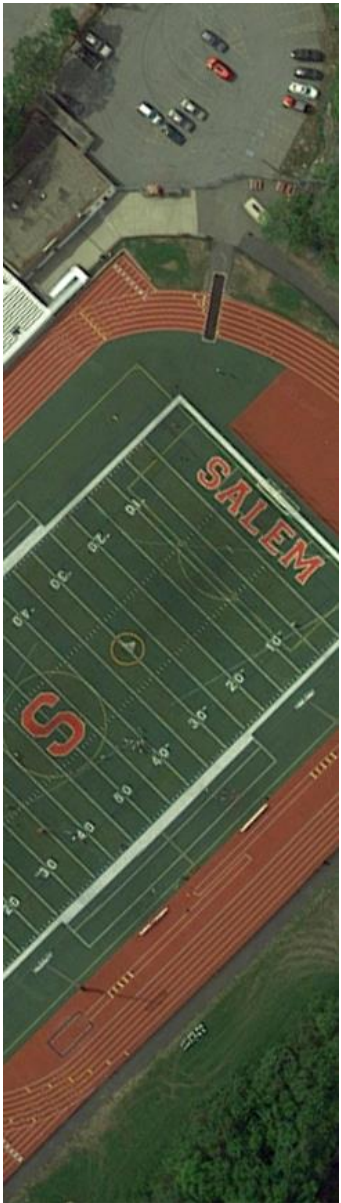




DESIGN CRITERIA

- Modern, safe, code compliant and gender equal facility
- Separate pedestrians from vehicle access to the entry
- Separate the athletic changing area from the public amenity spaces
- Sustainable design and Net Zero Energy facility
- Protect visitors from inclement weather by providing semi-sheltered areas
- Provide outdoor grilling area for informal food preparation
- Improve the architecture to present a unified, thematic aspect to the entry and the various facilities
- Provide a opportunity for fundraising, community, education and art

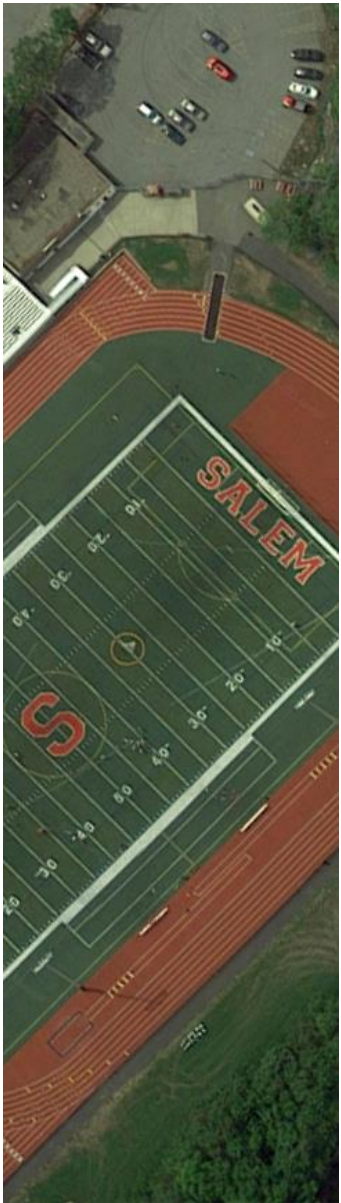




CHALLENGES

- Very small site with surrounding ledge
- Poor drainage
- Limited access
- Existing Facility is in poor condition
- Scheduling with minimal interruption to school/sports





PROJECT PROGRAM HIGHLIGHTS

- Improved Entry
 - Separation of vehicle and pedestrians
 - Picnic area
- Public Amenities
 - 25 Women's facilities (with variance)
 - 16 Men's facilities (with variance)
- Concessions
 - Prepared and packaged foods & beverages
- Athletic Changing Facilities
 - Separate from spectators
 - Taping and treatment room
- Accessible Press Box



The Bertram Field Site

Bertram Field has a number of feature's worth taking note of in analyzing the site. Those feature's have been highlighted on the site plan to provide a basis of knowledge on how these feature's impacted design choices.

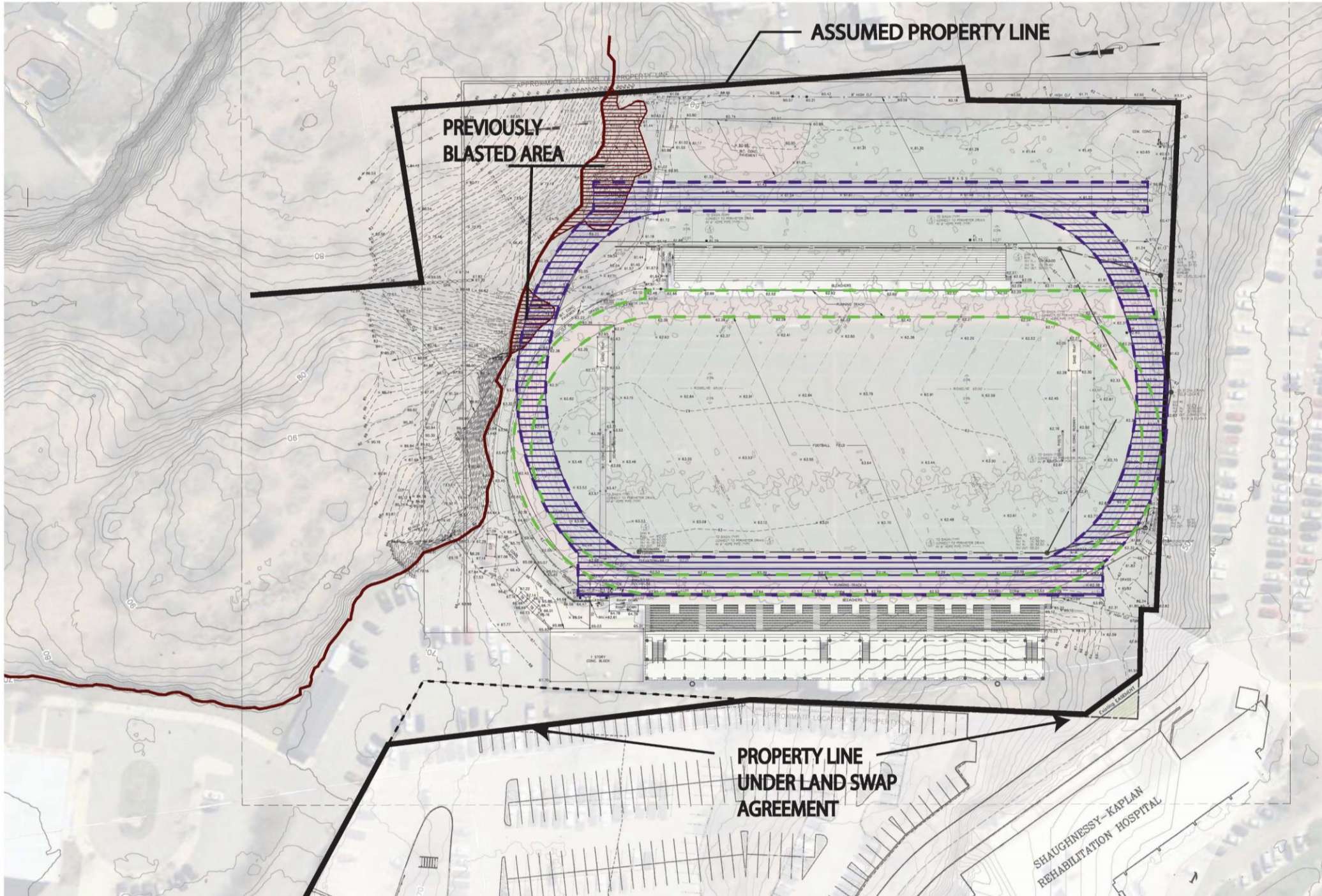
The property line of Bertram Field is noted in solid black.

The extent of the new track is noted in dashed purple.

The extent of the old track is noted in dashed green.

The ridge edge is noted in solid red.

The location of options is designed to fit in between the property line and existing ridge edge in order to preserve the landscape conditions present on site.



ENTRY

Picnic / Grilling Area

Pedestrian Access

New Parking



Emergency Vehicle Turnaround
and Access



COLLINS PARKING TABULATION

DESIGNATED PARKING SPACES

JACKSON STREET PARKING LOT	08
COLLINS MIDDLE SCHOOL	82
BERTRAM FIELD	54
JACKSON STREET PARKING	45
TOTAL:	189

POTENTIAL PARKING SPACES

JACKSON STREET PARKING	05
BERTRAM FIELD	-05
TOTAL:	00

JACKSON STREET
8 DESIGNATED SPACES



BERTRAM FIELD

EXISTING: 54 SPACES
PROPOSED: 49 SPACES

40 SPACES

42 SPACES

**COLLINS MIDDLE
SCHOOL**

NSMC

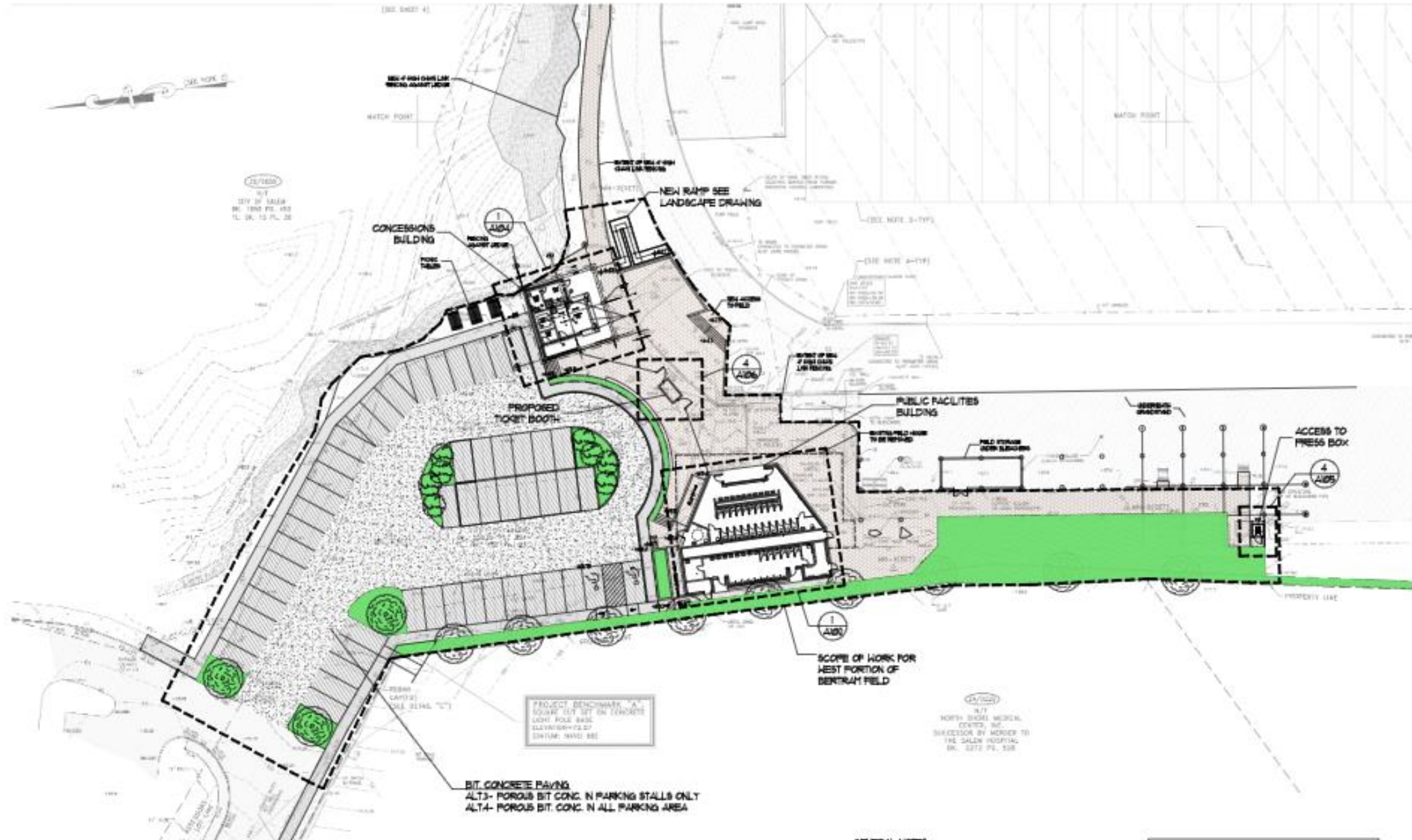
166 SPACES

JACKSON STREET

COLLINS FIRE LANE - NO PARKING

POWDER HOUSE FIRE LANE

HIGHLAND AVENUE

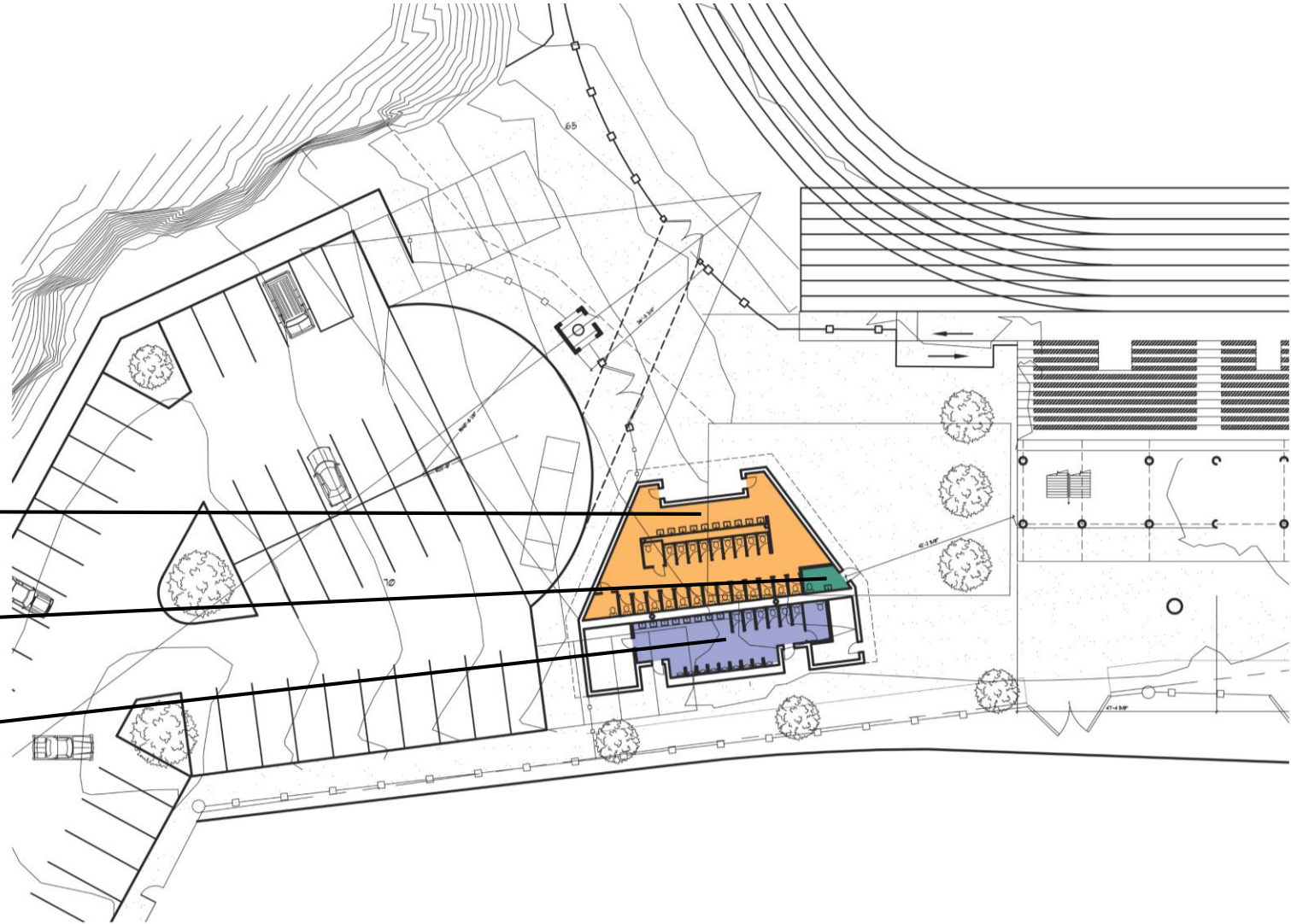


PUBLIC AMENITIES

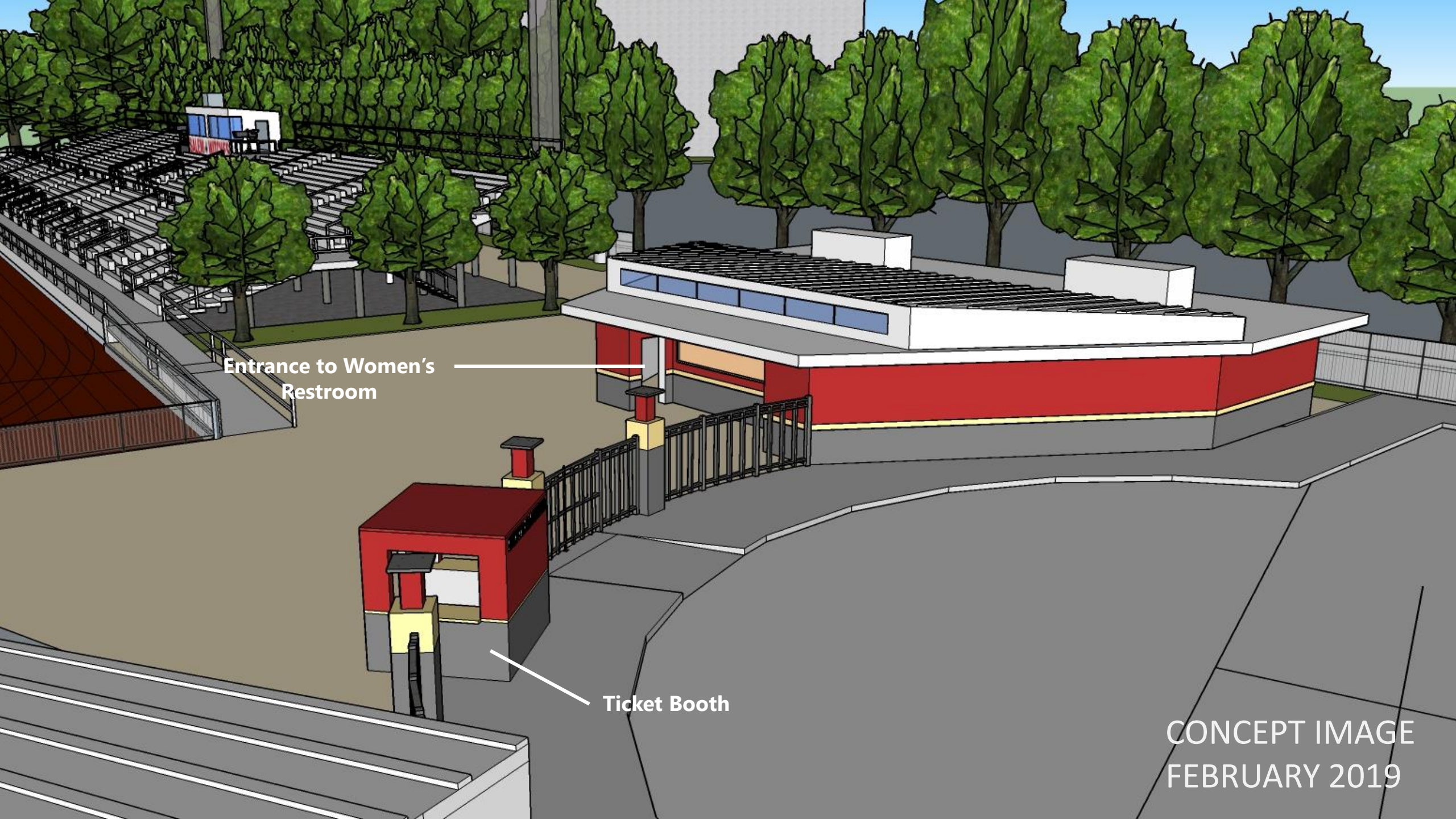
Women's Amenities

Family Amenities

Men's Amenities



SALEM BERTRAM FIELD



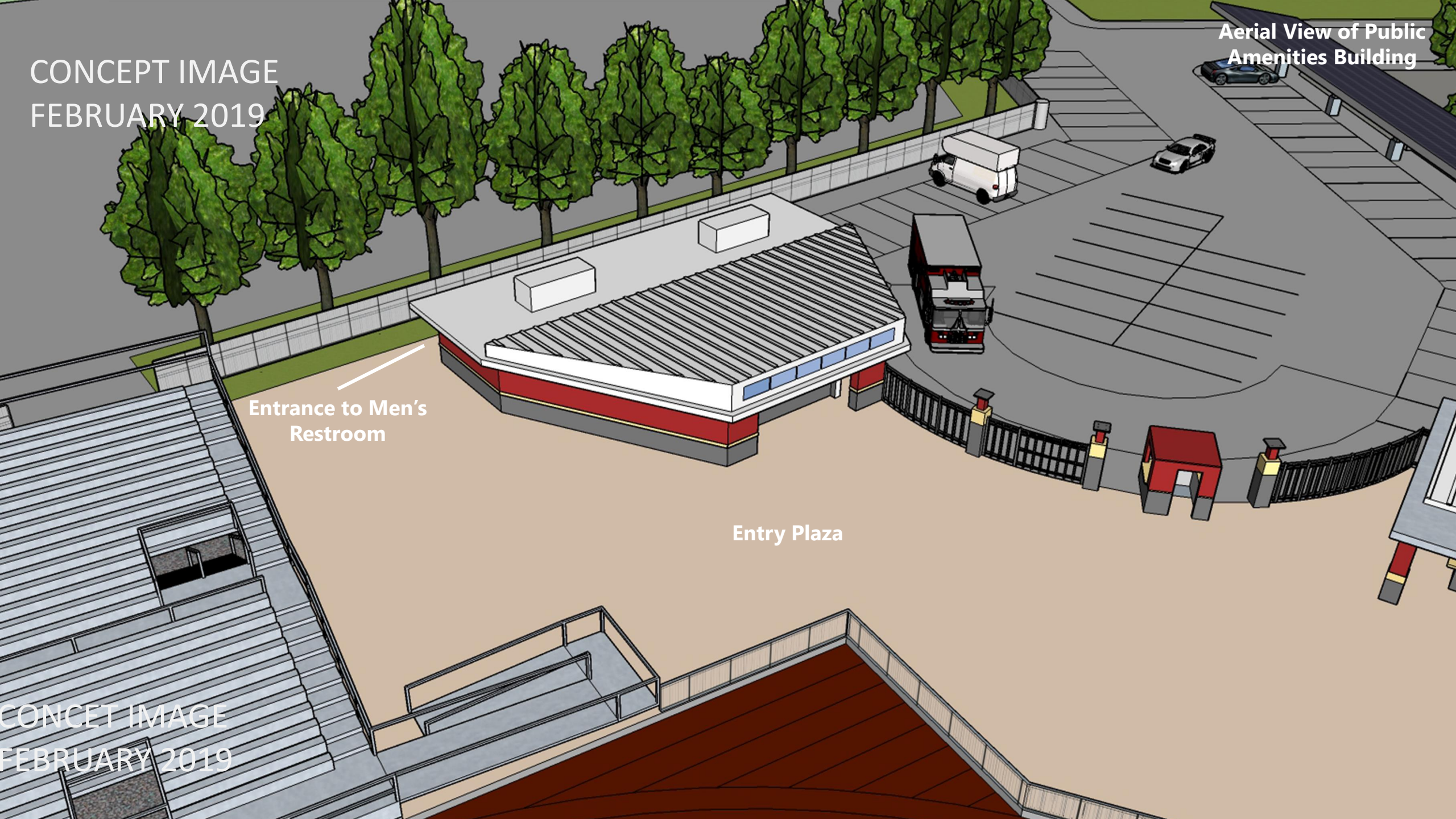
Entrance to Women's
Restroom

Ticket Booth

CONCEPT IMAGE
FEBRUARY 2019

CONCEPT IMAGE
FEBRUARY 2019

Aerial View of Public
Amenities Building



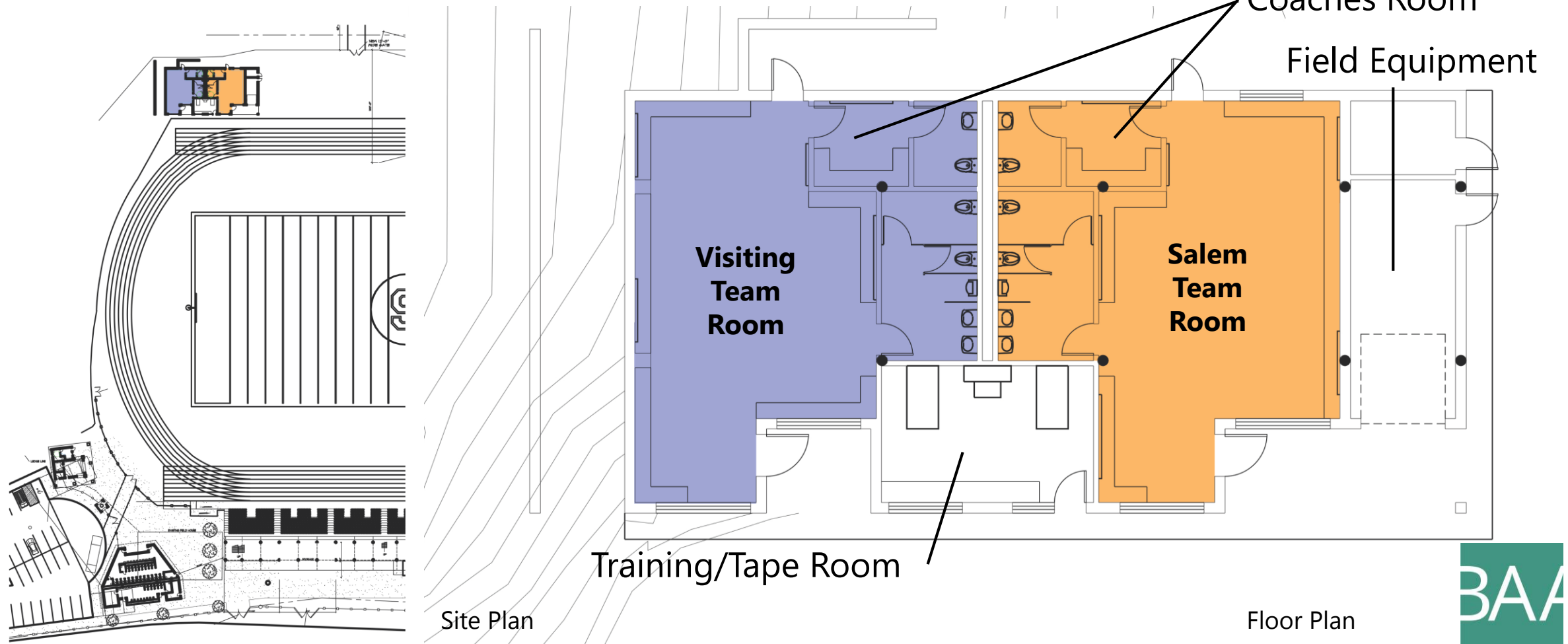
Entrance to Men's
Restroom

Entry Plaza

CONCET IMAGE
FEBRUARY 2019

ATHLETIC CHANGING FACILITIES

THE ROLAND J. KILEY FIELDHOUSE



Site Plan

Floor Plan



SALEM BERTRAM FIELD

Aerial View of Athletic
Changing Facility

Visitor Changing
Room

First Aid /
Training

Salem Changing
Room

Field Storage

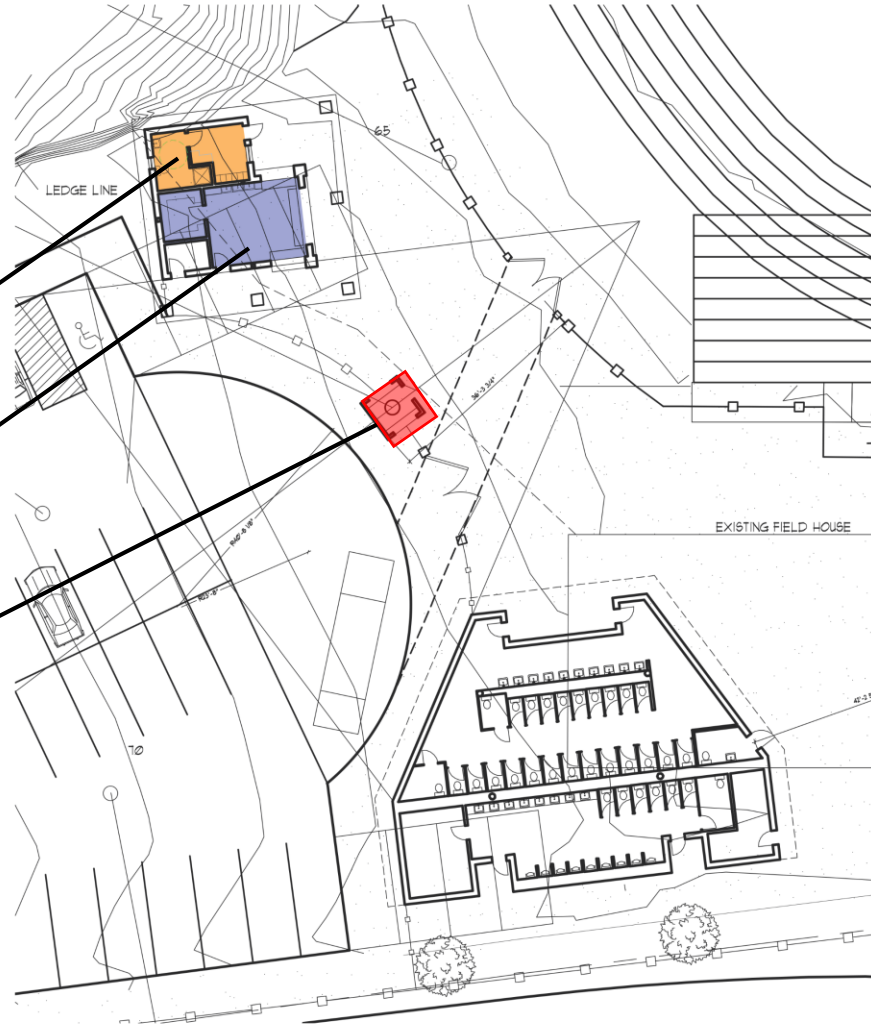
CONCEPT IMAGE
FEBRUARY 2019

CONCESSIONS

Officials Room

Concessions

Ticket Booth



SALEM BERTRAM FIELD

View of Concessions



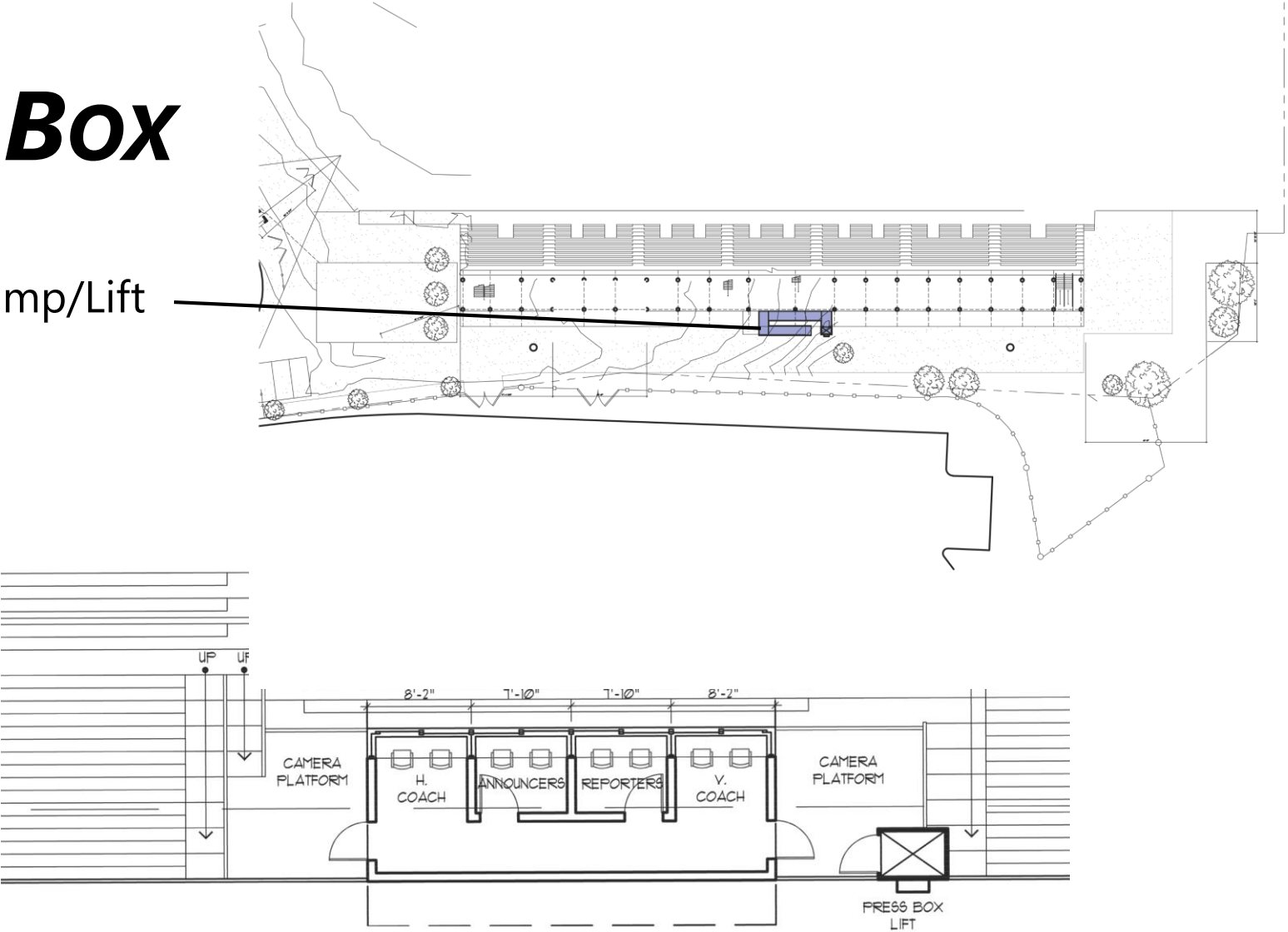
Concessions
Windows

Officials Room

CONCEPT IMAGE
FEBRUARY 2019

PRESS BOX

Accessible Ramp/Lift
to Press Box



Press Box Plan

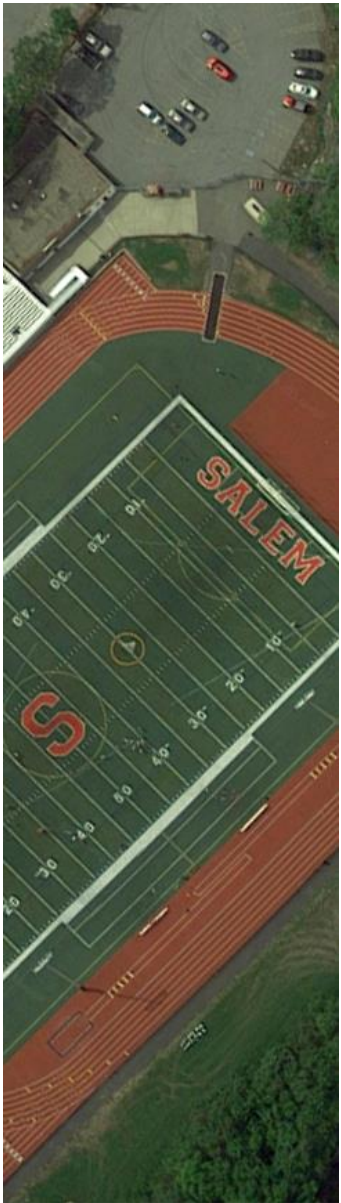


View of Press Box from Field

Camera Platform

SALEM WITCHES

CONCEPT IMAGE
FEBRUARY 2019



CURRENT PROJECT STATUS

- Site, utility, and soil surveys completed
- Design Development and estimate in early May, 2019
- Seeking funding approval from CPA and Council May/June
- Seeking approval of design in May/June from Park & Rec and School
- Fundraising underway
 - Goal of \$350k to fund concessions and equipment
- Development of Operations & Maintenance Plan
- Development of construction and schedule plan in coordination with schools, teams, neighbors
- If funded –
 - Bidding August 2019
 - Construction Start December 2019
 - Use and Occupancy September 2020

