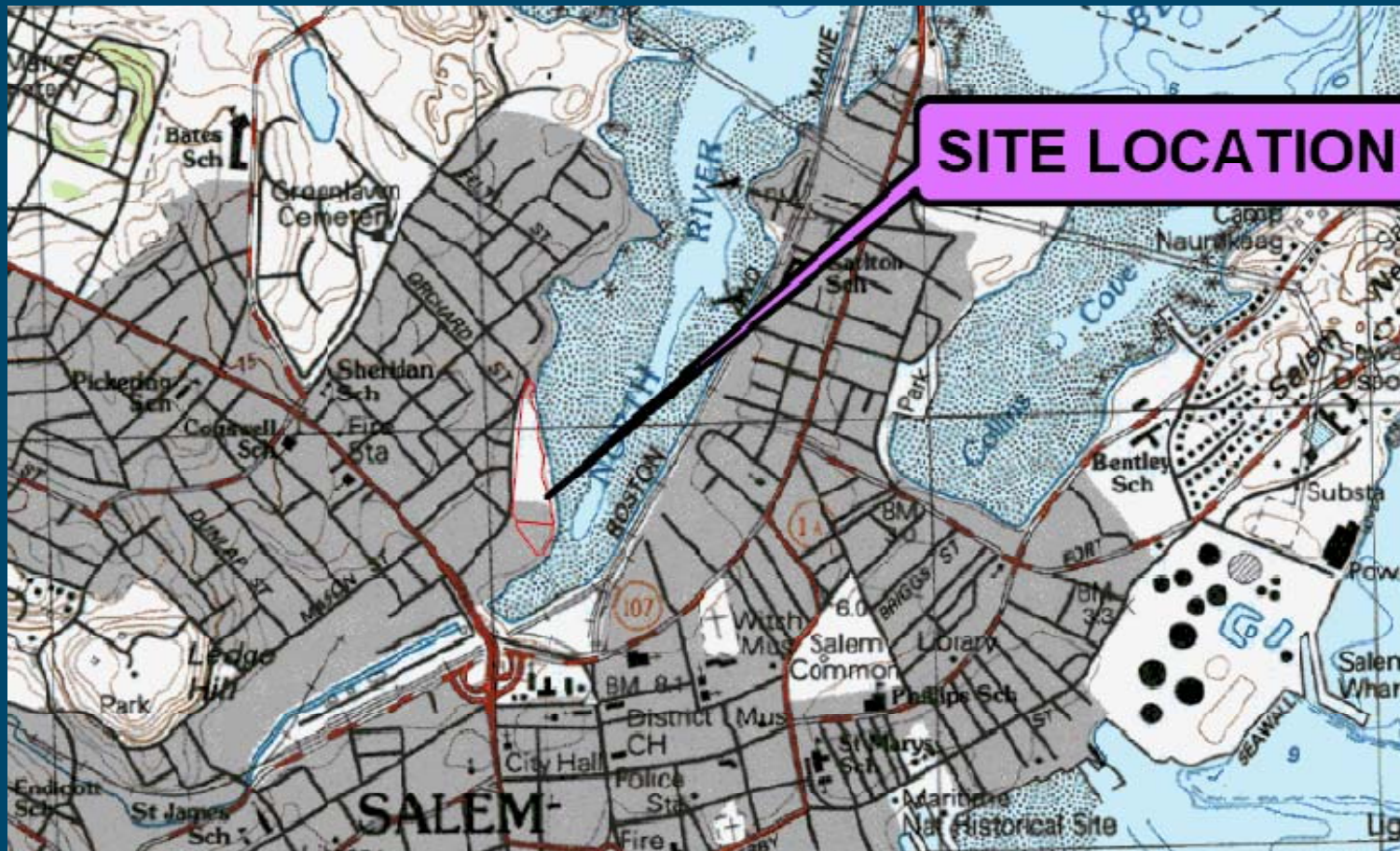


ENVIRONMENTAL CLEANUP APPROACH FURLONG PARK SALEM, MA

September 2010



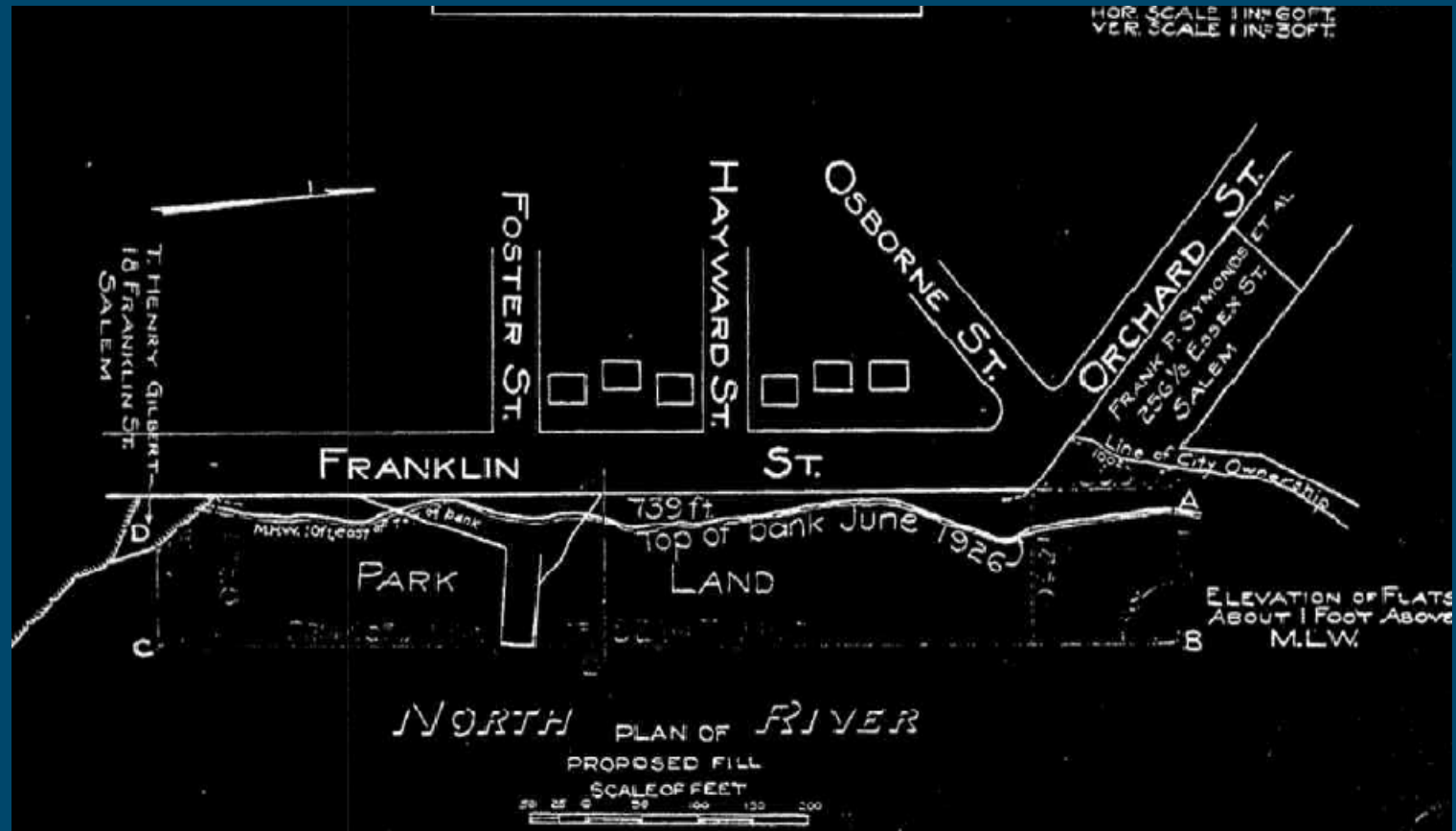
LOCATION



HISTORY

- Local Area Formerly Industrial
- Park Was North River Tidal Flats
- Filling With Solid Waste/Ash
- Soil Cover and Park 1926
- Park Renovations/Improvements 2009 - 2010

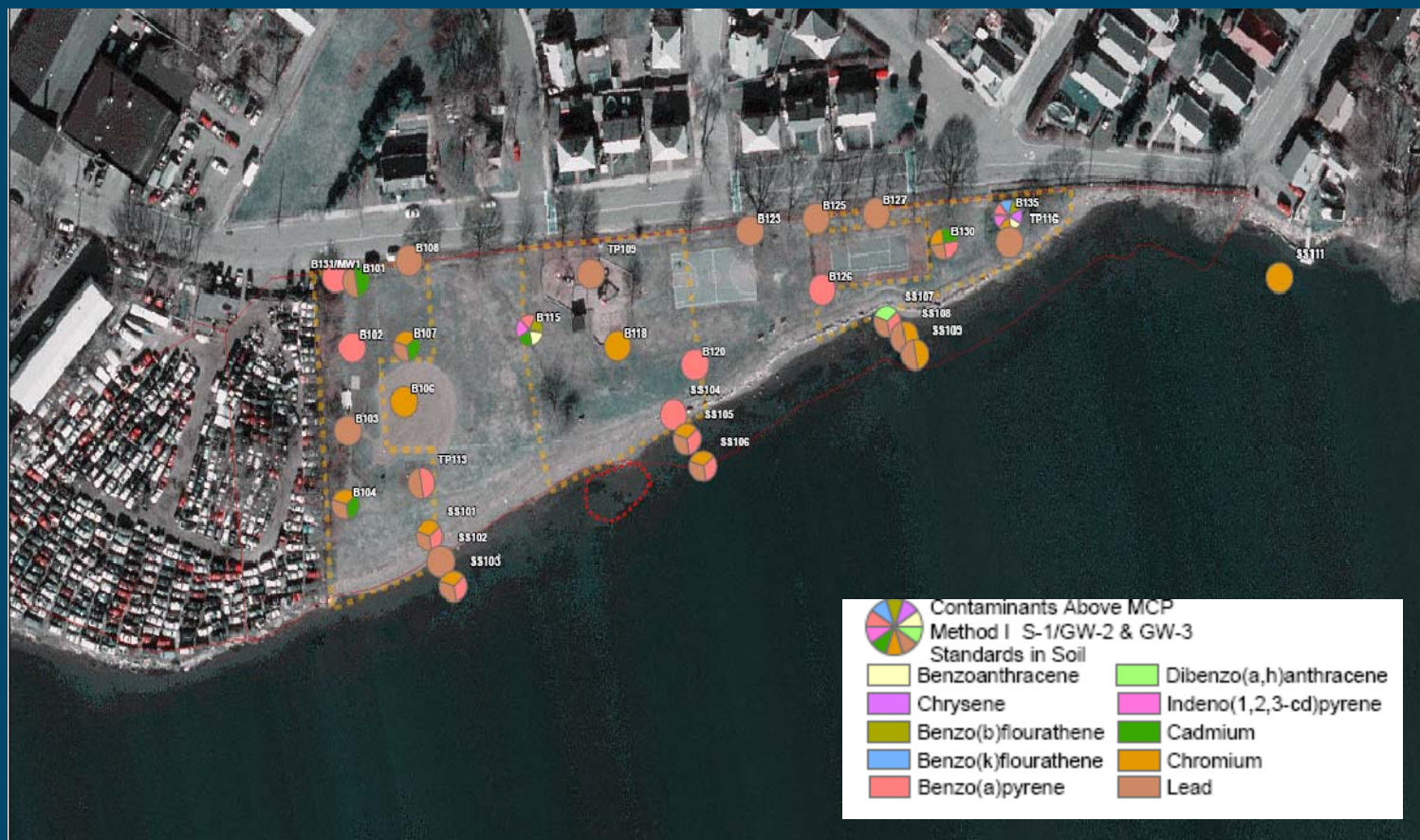
NORTH RIVER 1926



ENVIROMENTAL TESTING 2010



ENVIRONMENTAL TEST RESULTS 2010



ENVIRONMENTAL TEST RESULTS

2010

- COAL TAR IN RIVER
- NO GROUNDWATER CONTAMINATION
- LOAM TOPSOIL IS 1- 3 FT THICK
- ASH FILL BELOW TOPSOIL
- PAHs AND METALS IN FILL ARE ABOVE ACCEPTABLE LEVELS FOR PARK
- PAHs AND METALS IN SEDIMENT ARE ABOVE ACCEPTABLE LEVELS FOR PARK



CLEANUP OPTIONS

- INCREASE CLEAN COVER TO 3 FT BY ADDING 1 - 2 FT OF SOIL
- INCREASE CLEAN COVER TO 3 FT BY REMOVING
REMOVE 1 – 2 FT OF FILL AND REPLACE WITH
SOIL (APPROX 9,000 CUBIC YARDS)

CLEANUP MANAGMENT

- DEDICATED SITE CONSTRUCTION ENTRANCE
- ACCESS CONTROL AND SECURITY
- TRAFFIC CONTROL (4 – DAY WEEKS?)
- DUST MONITORING AND CONTROL
- ERROSION MONITORING AND CONTROL
- PHASED CLEANUP AND RESTORATION FOR SEPARATE AREAS

CLEANUP APPROACH



Soil Excavation and Testing

Off -Site Recycling



CLEANUP APPROACH



Bring Clean Fill



RESTORE PARK AND COMPLETE IMPROVEMENTS

