

City of Salem Forest River Pool



Recreation Commission

June 19, 2018



Agenda

Intro/Overview

Existing Conditions

Pool Programming

Bathhouse
Considerations

Ballfield Options

Park Option

Existing Location
Option

IMPORTANT CONSIDERATIONS

- Several programmatic needs and funding
- Scheduling & phasing
- Wetlands, floodplains, permitting
- Historic
- Universal design – engaging diverse users
- Zero net energy goal and LEED
 - minimum requirements are for it to meet 20% above the current energy code & receive all applicable utility incentives
- Neighborhood and impact of construction
- Operations & Maintenance
- Transportation, access, and parking

“The nature of design is to synthesize disparate perspectives and create a richer end product through collaboration and iteration.

Jens Martin Skibsted

Integrated Design Process		Conventional Design Process
Inclusive from the outset	VS	Involves team members only when essential
Front-loaded — time and energy invested early	VS	Less time, energy, and collaboration exhibited in early stages
Decisions influenced by broad team	VS	More decisions made by fewer people
Iterative process	VS	Linear process
Whole-systems thinking	VS	Systems often considered in isolation
Allows for full optimization	VS	Limited to constrained optimization
Seeks synergies	VS	Diminished opportunity for synergies
Life-cycle costing	VS	Emphasis on up-front costs
Process continues through post-occupancy	VS	Typically finished when construction is complete

Existing Pools



Existing Bathhouse



2018 Storm Surge



The background of the slide is a close-up, high-resolution image of water ripples. The ripples create a complex, organic pattern of light and dark blue-green tones, with bright highlights where the water's surface reflects light and darker areas in the troughs of the ripples. The overall effect is a textured, shimmering surface.

Pool Programming

Pool Types: Open Water Pools



Large unobstructed water surface

Limited separation of swimmer/non-swimmer areas

Can support lap swim, classes, diving

Pool Types: Separate Pools



Eliminates cross-over swimming from shallow to deep water

Can support lap swim, classes, diving

Greatest degree of oversight for youngest of users

Increased construction cost

Higher operating cost

Pool Types: Open Water Pools



Large unobstructed water surface

Limited separation of swimmer/non-swimmer areas

Can support lap swim, classes, diving

Pool Types: Separate Pools



Eliminates cross-over swimming from shallow to deep water

Can support lap swim, classes, diving

Greatest degree of oversight for youngest of users

Increased construction cost

Higher operating cost

Pool Types: Combination Pool



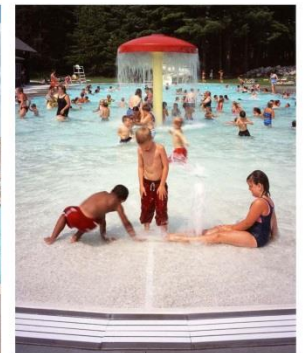
Breaks pool into 'zones' for swimmers and non-swimmers

Can support lap swim, classes, diving

Greater degree of oversight for youngest of users

Pool Types: Combination Pool

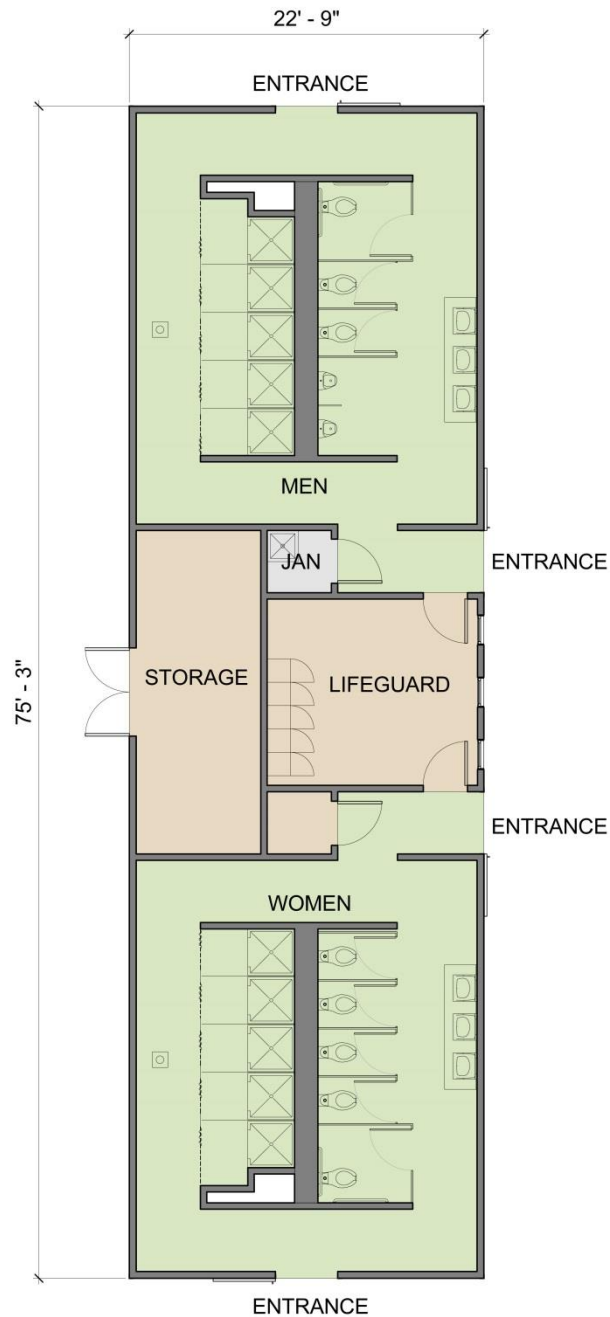




The background of the slide is a close-up, high-resolution image of water ripples. The light reflects off the surface, creating a complex, organic pattern of bright, irregular shapes against a darker blue background. The overall effect is a shimmering, textured surface.

Bathhouse Considerations

Traditional vs Single Use



Pools & Bathhouses



Pools & Bathhouses



Overall Site



The background of the slide is a close-up photograph of water ripples. The light reflects off the crests of the waves, creating a pattern of bright, irregular shapes against a darker blue background. The overall effect is a textured, shimmering surface.

Ballfield Options

Ballfield Site





Ball Field Location - Option 1A
May 30, 2018



Ball Field Location - Option 1B
May 30, 2018

Park Option

Park Site





Park Land Location
May 30, 2018

Existing Site Option

Existing Site



Existing Site Opportunities



Cove Restoration





Bathhouse Options



Questions