



North (114)/Bridge Streets MBTA Station Pedestrian/Bike Access Study Neighbors Presentation

April 8, 2013



City of Salem, Massachusetts

Mayor Kimberley Driscoll | Engineering | Planning and Community Development



Walk/Bike Trip Origins/Destinations
To/from Salem Station
requiring enhancements

Walk/Bike
Trip Origins/Destinations
to/ from Salem Station
requiring enhancements

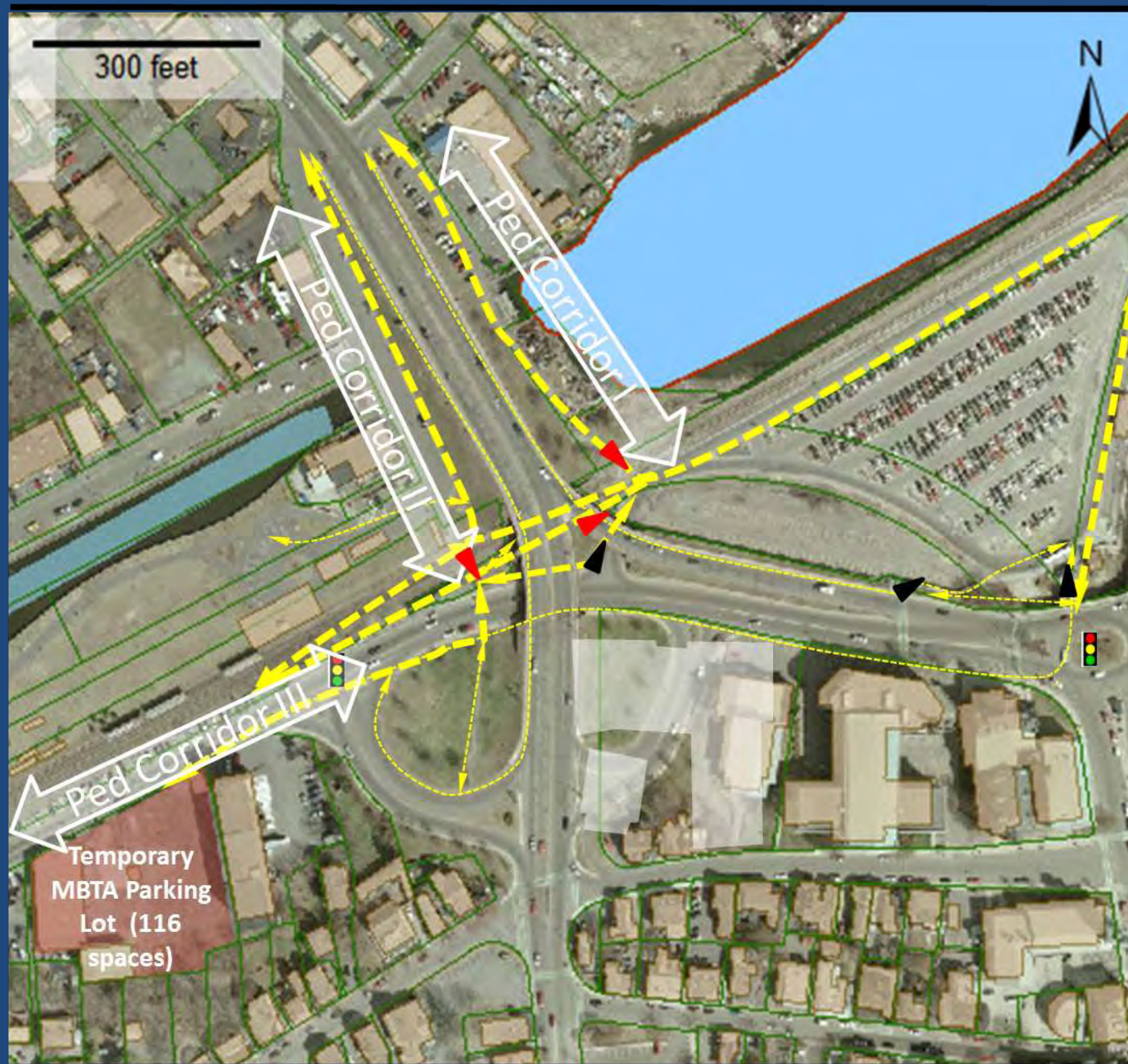
MBTA
Salem Station
(Future Garage Site)




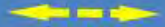



City of Salem, Massachusetts

Mayor Kimberley Driscoll | Engineering | Planning and Community Development

ENGINEERS
FST
Since 1914



Legend

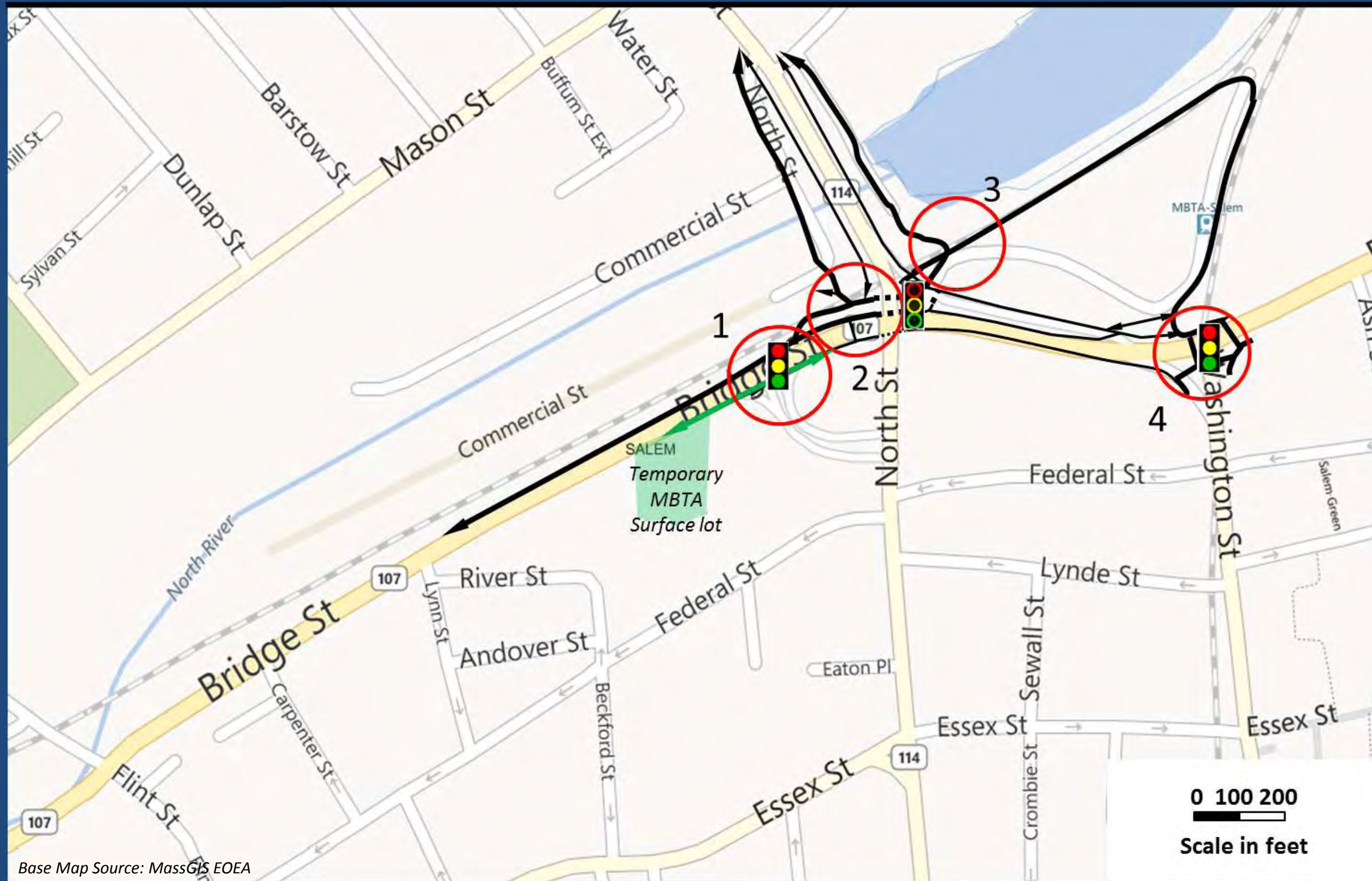
-  Less busy, grade - challenged pedestrian routes
-  Busier, but problematic pedestrian routes with safety/ ADA/rail crossing or private trespassing issues
-  Focus pedestrian access corridors
-  Existing formal pedestrian access point
-  Existing informal pedestrian access point

Salem Station Focus Walk/Bike Corridors



City of Salem, Massachusetts

Mayor Kimberley Driscoll | Engineering | Planning and Community Development



Salem Station Pedestrian/Bike Count Locations

Legend



Existing
Signal



6-9 AM Pedestrian/Bike Count Location



Future
Signal



Busy existing pedestrian access routes



Future busy pedestrian access route



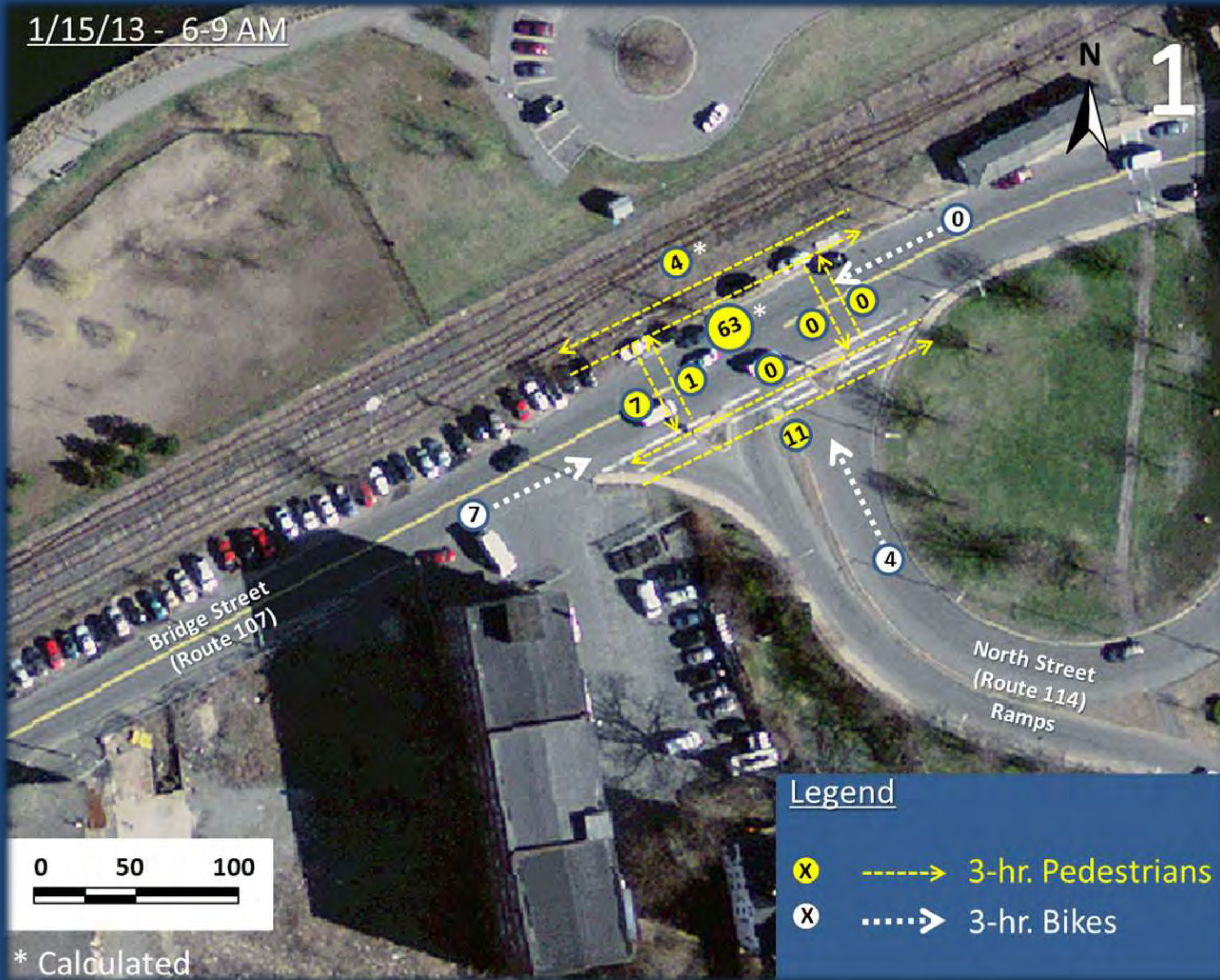
Lightly travelled /steep pedestrian access routes



City of Salem, Massachusetts

Mayor Kimberley Driscoll | Engineering | Planning and Community Development

1/15/13 - 6-9 AM



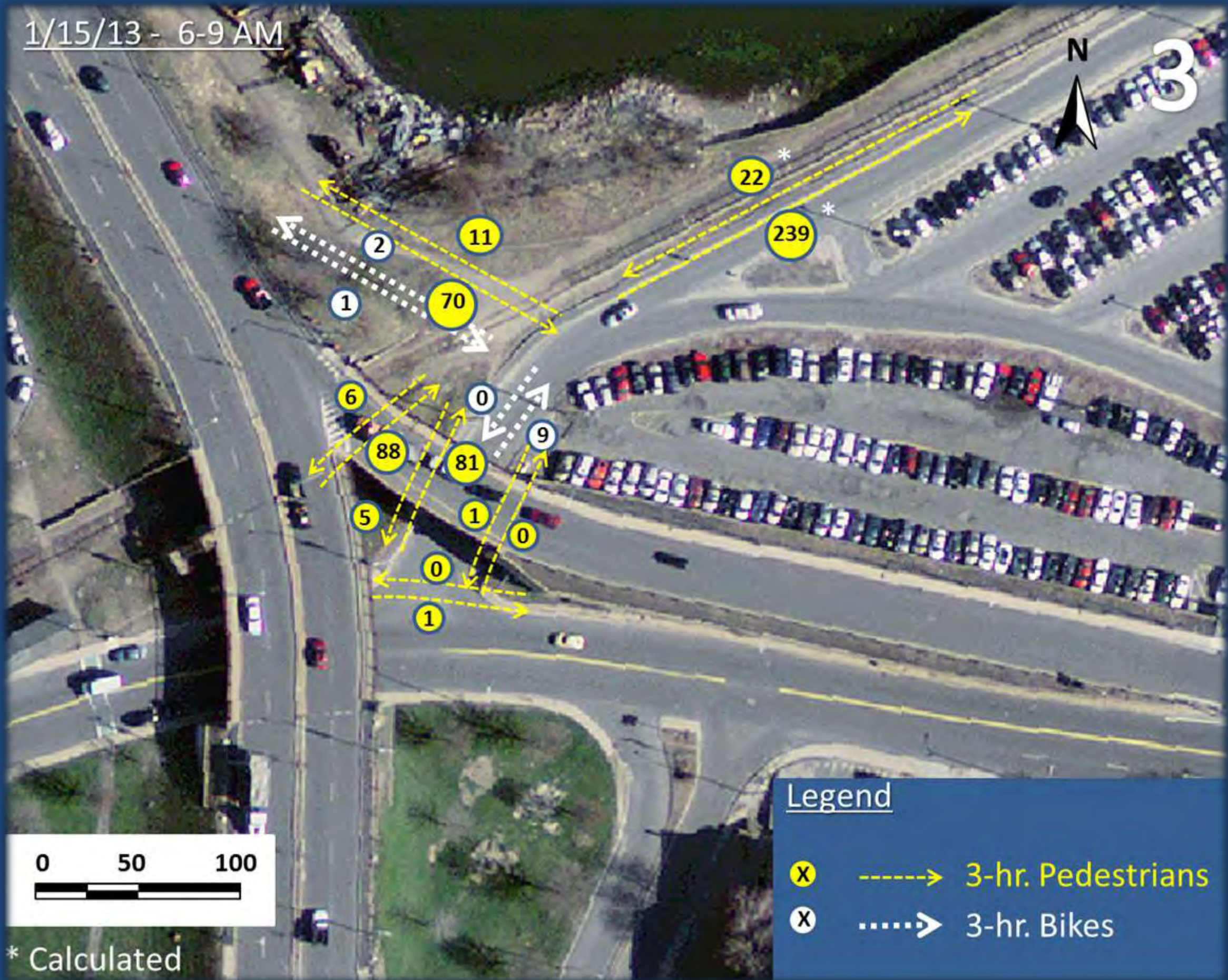
City of Salem, Massachusetts

Mayor Kimberley Driscoll | Engineering | Planning and Community Development



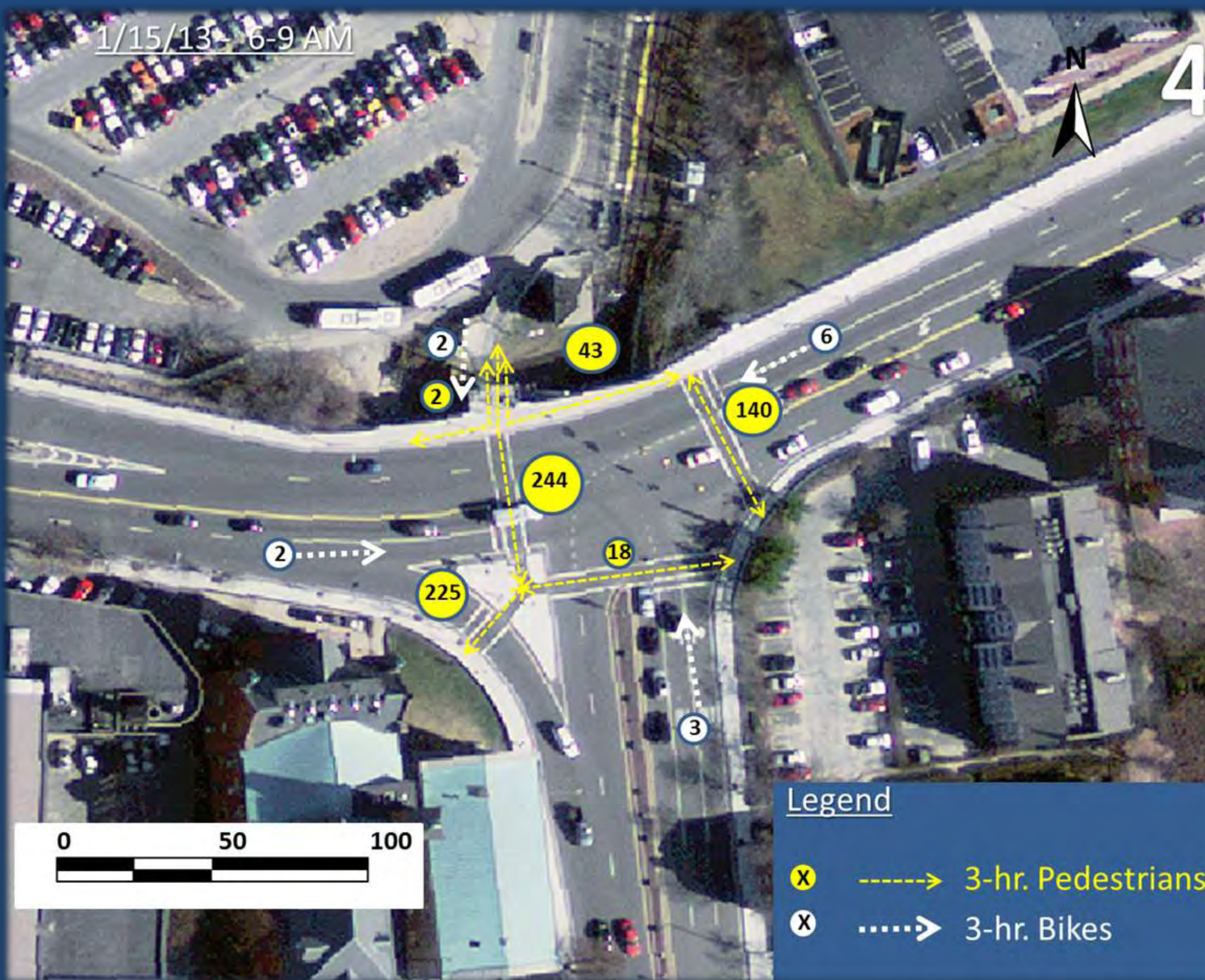


1/15/13 - 6-9 AM



City of Salem, Massachusetts

Mayor Kimberley Driscoll | Engineering | Planning and Community Development



City of Salem, Massachusetts

Mayor Kimberley Driscoll | Engineering | Planning and Community Development



Not busy- steep uphill grade approaching 5%

Busy & walk behind parked cars, save 1+ minute

Cross low-use/low-speed track and non-ADA access and 3 tripping hazards to site sidewalk

private land

Small non-ADA hill

Accessible ramp to Station platform

Stairs to Station platform

Temporary 116-space Parking lot

MBTA Salem Station Pedestrian Corridor I

AM Inbound Trip Feature comparison of alternative routes

- Formal
- Informal





Not busy- steep uphill grade approaching 5%

pass through temporary 25-space head-in commuter parking area

Non-ADA Grade crossing of low-use/low-speed track and downhill access to site sidewalk – both tripping hazards

Well used unpaved/unlighted paths under North Street viaduct

Accessible ramp to Station platform

Non-ADA downhill sidewalk to Bridge Street Unsignalized crossing

Non-ADA stairs to Station platform

Non-ADA stairs between Bridge and North Streets

Temporary 116-space Parking lot

Unsignalized Bridge Street crossing w/sight line issues

MBTA Salem Station Pedestrian Corridor II

AM Inbound Trip Feature Comparison of Alternative Routes

- Formal
- Informal



City of Salem, Massachusetts

Mayor Kimberley Driscoll | Engineering | Planning and Community Development



Hazardous in-street walking with informal/unmarked 90° backing of parked vehicles

Must go around Bridge Street Sports building 'pinch point'

Walk on unpaved/unlighted paths under North Street viaduct

Accessible ramp to Station platform

Steep uphill sidewalk to Washington Street Signalized crossing

Stairs to Station platform

Unsignalized Bridge Street crossing w/sight line issues

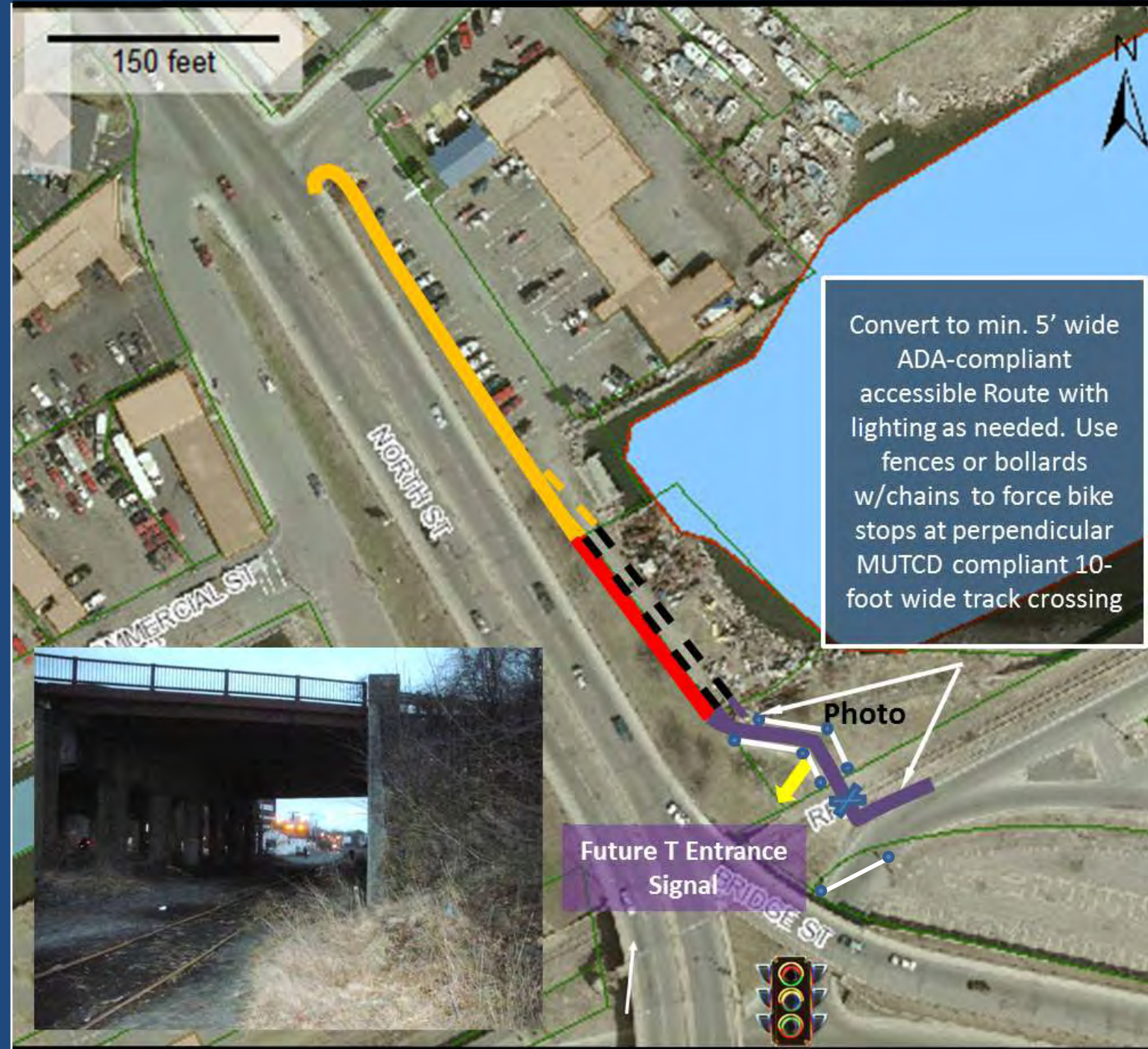
Temporary 116-space Parking lot

MBTA Salem Station Pedestrian Corridor III

AM Inbound Trip Feature Comparison of Alternative Routes

- Formal
- Informal





Base Map Source: Salem GIS

Legend

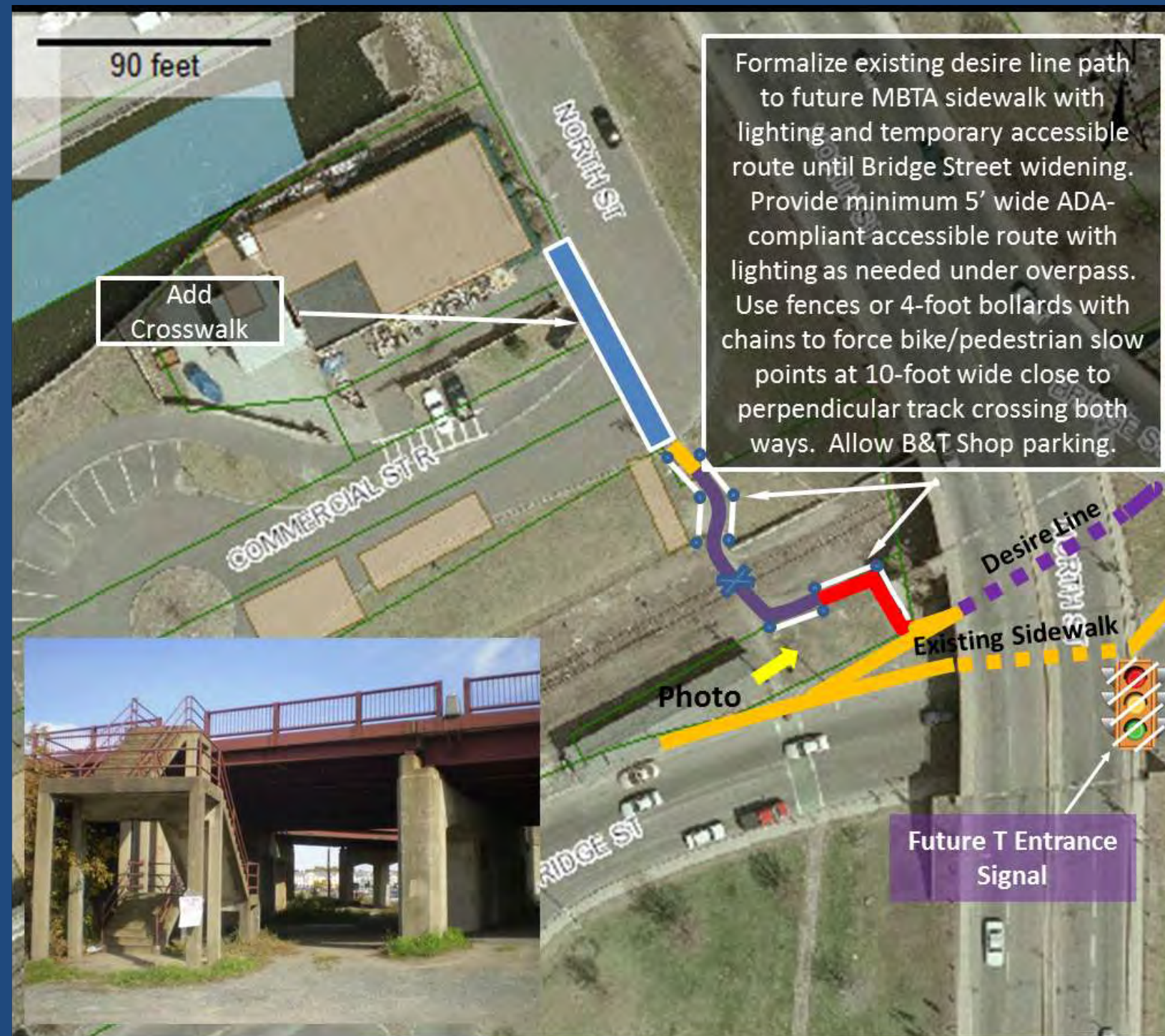
- New raised concrete sidewalk without retaining wall – City Layout
- New sidewalk with new lighting and retaining wall - City Layout – **Option 2A**
- New sidewalk with new lighting – private Layout w/ permanent easement - **Option 2B**
- New sidewalk with lighting – MBTA/Pan Am Railways layout
- New ADA rail crossing for pedestrians and bikes
- New fencing to control crossings outside train passage envelope



City of Salem, Massachusetts

Mayor Kimberley Driscoll | Engineering | Planning and Community Development





Base Map Source: Salem GIS

Legend

- New raised concrete sidewalk – City Layout
- New sidewalk with lighting – MBTA/Pan Am Railways layout
- New sidewalk with lighting under viaduct – MBTA/Pan Am Railways layout
- New sidewalk with lighting – requires easement through private layout
- New ADA rail crossing for pedestrians and bikes
- New fencing to control crossings outside train passage envelope



City of Salem, Massachusetts

Mayor Kimberley Driscoll | Engineering | Planning and Community Development





City of Salem, Massachusetts

Mayor Kimberley Driscoll | Engineering | Planning and Community Development

ENGINEERS
FST
Since 1914



Base Map Source: Salem GIS

Legend

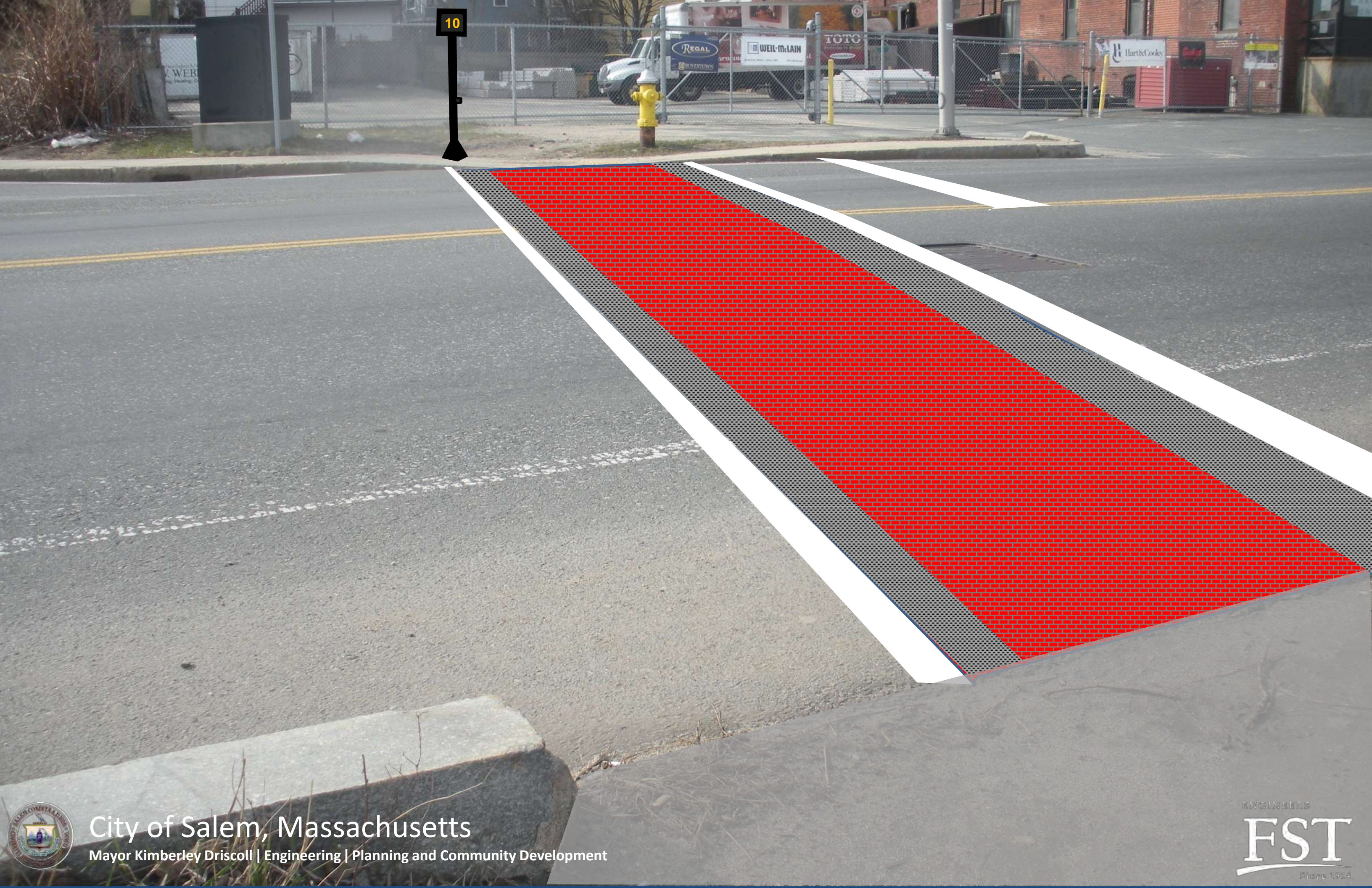
- New raised concrete sidewalk – City Layout
- Or new sidewalk with lighting – MBTA/Pan Am Railways layout behind Bridge St. Sports
- May tie into potential sidewalk with Option II-2
- New countdown pedestrian signals at existing traffic signal



City of Salem, Massachusetts

Mayor Kimberley Driscoll | Engineering | Planning and Community Development





10







City of Salem, Massachusetts

Mayor Kimberley Driscoll | Engineering | Planning and Community Development

ENGINEERS
FST
Since 1914



**MBTA
Salem
Commuter Rail
Station**

North River

Leslie's Retreat Park

**Temporary
116-space
Parking lot**

Commercial Street

Franklin Street

Bridge Street (Route 107)






**North Street
(Route 114)**

Federal Street

Washington Street

Federal Street

MBTA Salem Station Pedestrian/Bike Circulation Recommended Action Plan

-  **New Sidewalk/lighting**
-  **New Freight Pedestrian Xing**
-  **New or improved crosswalk**
-  **Consider parking enhancements**
-  **Provide 3' striped shoulder**

City of Salem, Massachusetts

Mayor Kimberley Driscoll | Engineering | Planning and Community Development





City of Salem, Massachusetts

Mayor Kimberley Driscoll | Engineering | Planning and Community Development

ENGINEERS
FST
Since 1914



City of Salem, Massachusetts

Mayor Kimberley Driscoll | Engineering | Planning and Community Development

ENGINEERS

FST

Since 1914



City of Salem, Massachusetts

Mayor Kimberley Driscoll | Engineering | Planning and Community Development





City of Salem, Massachusetts

Mayor Kimberley Driscoll | Engineering | Planning and Community Development





City of Salem, Massachusetts

Mayor Kimberley Driscoll | Engineering | Planning and Community Development





City of Salem, Massachusetts

Mayor Kimberley Driscoll | Engineering | Planning and Community Development

ENGINEERS
FST
Since 1914



Questions?



City of Salem, Massachusetts

Mayor Kimberley Driscoll | Engineering | Planning and Community Development

ENGINEERS
FST
Since 1914