

Salem Willows Park Restoration

Salem Willows Plan

April 30, 2019





Salem Willows Park Restoration

Stakeholder Meeting #2: Salem Willows Plan

Agenda

1. Introductions

Salem Willows Project Overview
Salem and Hatch Project Team

2. Salem Willows Plan

Historic Overview of Park Development
Recommendations

- Park-wide Recommendations
- Area-specific Recommendations
 - Historic Park Area
 - Shoreline Park Area
 - Active Recreation and Parking Area

3. Project Phasing and Next Steps

- Phase 1 (Concept Plan)
- Phase 2 (Design)
- Future Work

4. Discussion



Salem Willows Park Restoration Project

The Hatch team is working with the City to assess the conditions at Salem Willows and develop prioritized plans for restoration, specifically:

- **Existing Condition Report**
- **Schematic Design of “The Hill” area**
- **Tree and Landscape Plan for the entire site**
- **Development of the Salem Willows Plan**
- **Grant Assistance**



Salem Willows Project Team:

City of Salem

Jenna Ide, Director of Capital Projects and Municipal Operations,
jide@salem.com

Patricia O'Brien, Executive Director of Parks & Recreation Commission,
pobrien@salem.com

Deborah Duhamel, Assistant City Engineer, dduhamel@salem.com

Brittany Dolan, Sustainability and Resiliency Coordinator, bdolan@salem.com

Patti Kelleher, Historical Commission, pkelleher@salem.com

Consultant Team

Hatch (Prime Consultant)

Duke Bitsko, Principal-in-charge, duke.bitsko@hatch.com

Jason Bobowski, Senior Project Manager, jason.bobowski@hatch.com

Hilary Holmes, Civil Engineer, hilary.holmes@hatch.com

Colin Poranski, Landscape Designer, colin.poranski@hatch.com

Pamela Hartford, Landscape History, Design and Preservation

Pamela Hartford, Landscape Historian, bookbosc@covad.net

Winter Street Architects

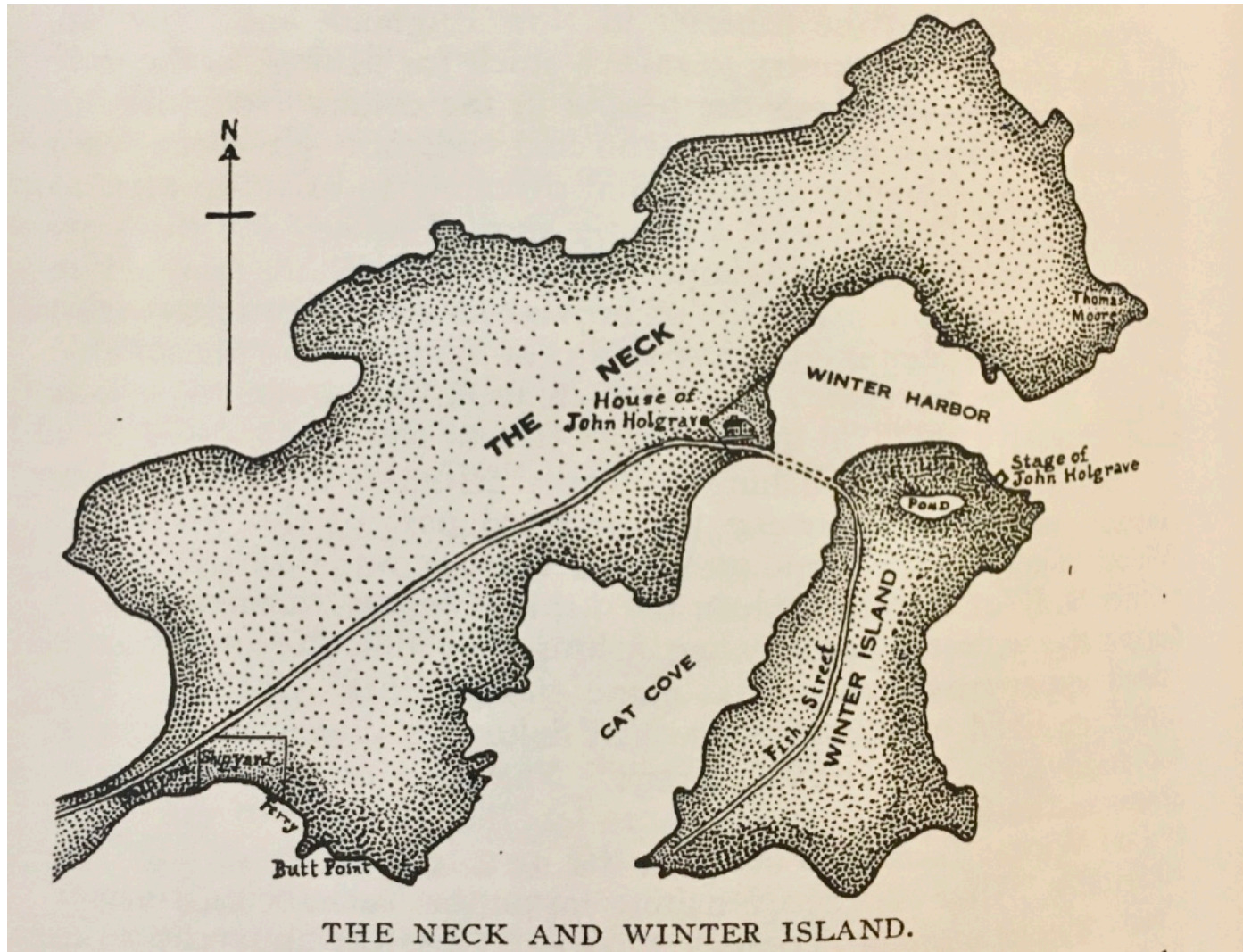
Paul Durand, Principal Architect, pdurand@wsarchitects.com

Michael Voosen Fields, Architectural Designer, mfields@wsarchitects.com

Davey Resource Group

Elizabeth McKinley, Arborist, elizabeth.mckinley@davey.com

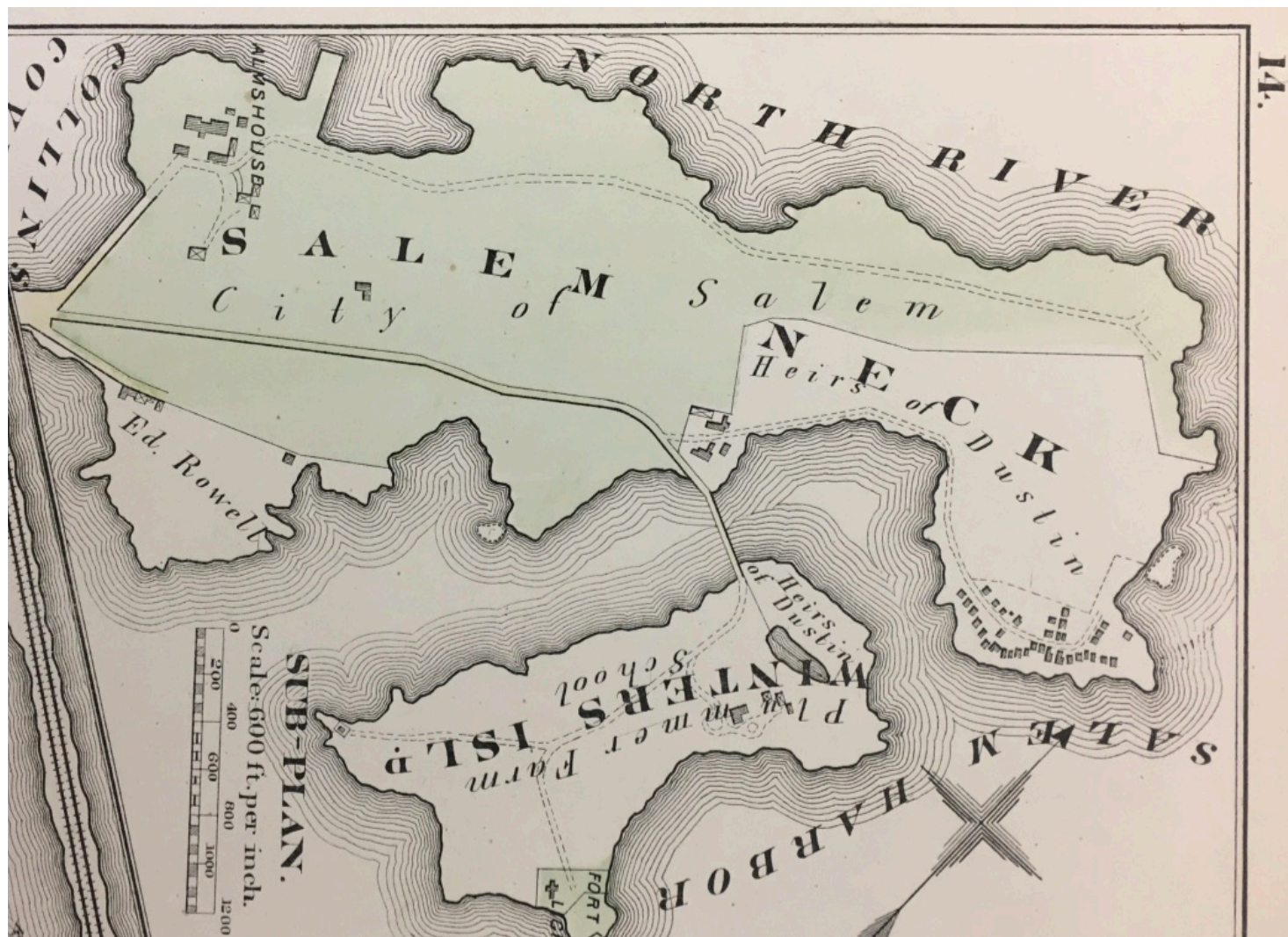
Historic overview of Salem Willows Park Development

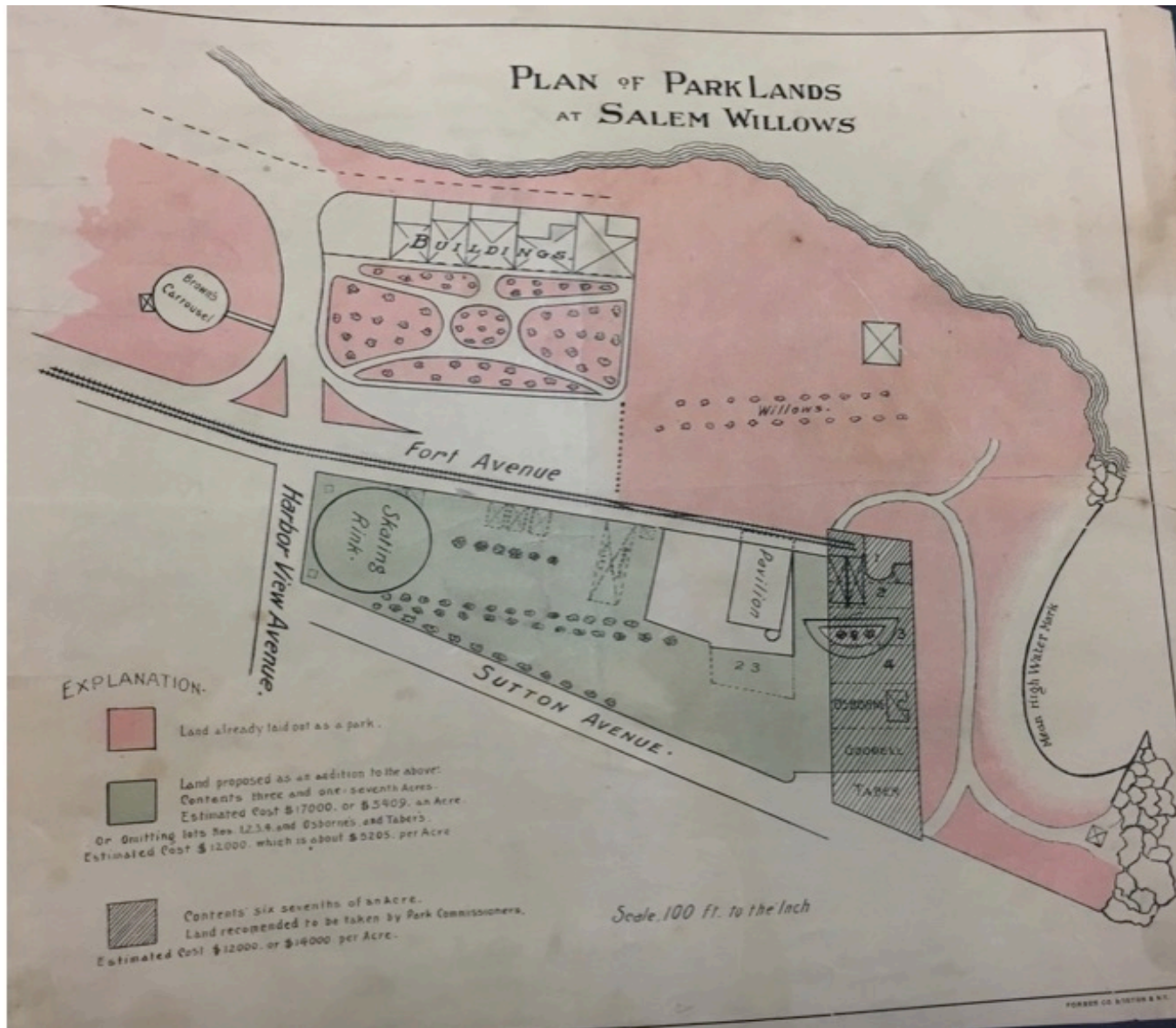


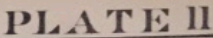
The Neck and Winter Island, ca 1636

Joseph Felt, *Annals of Salem*, Vol. I

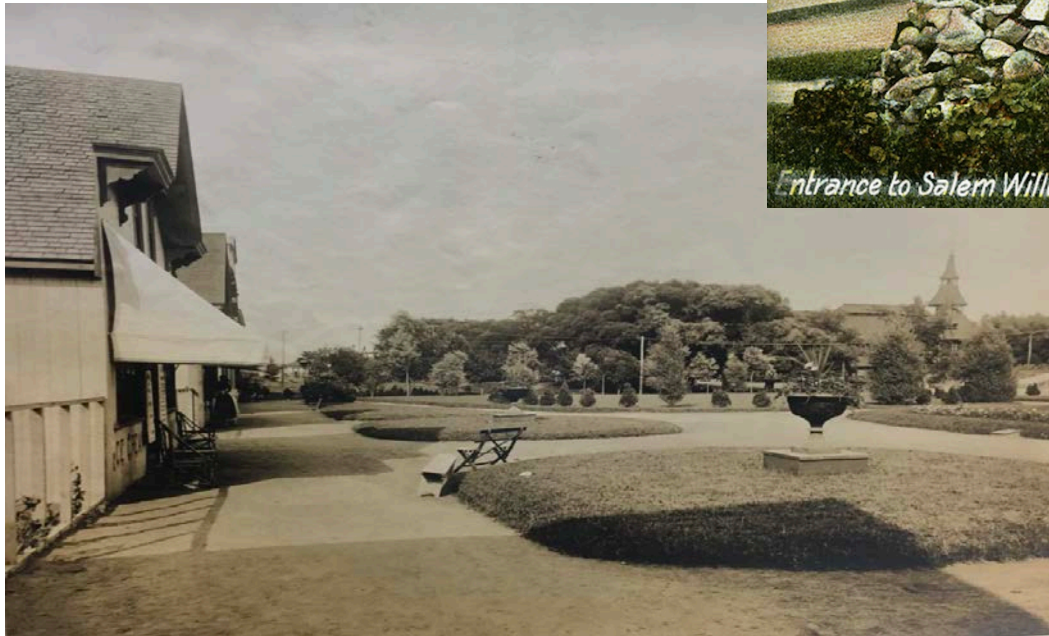
Salem Willows Plan





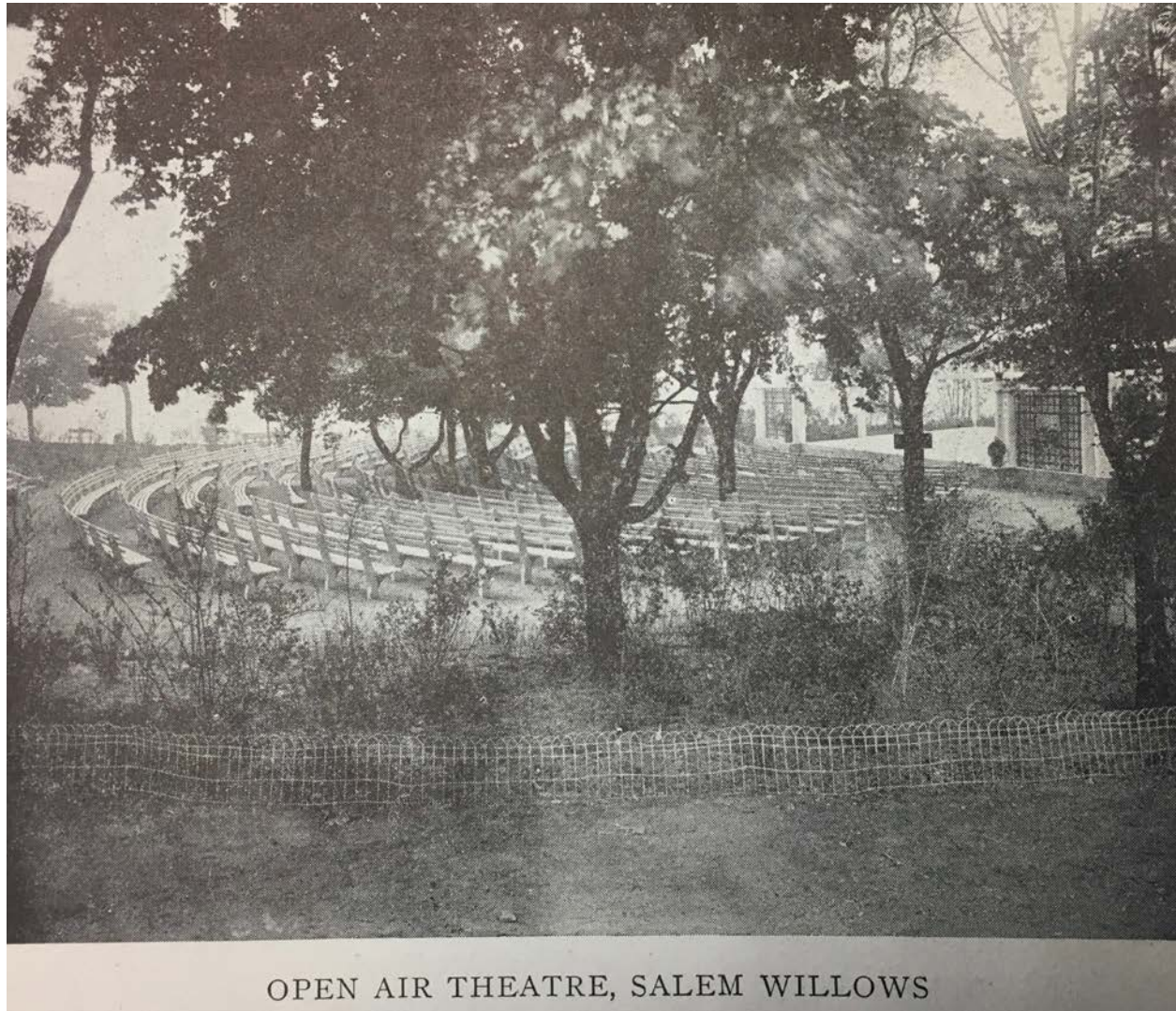


Rockeries at Park entrance

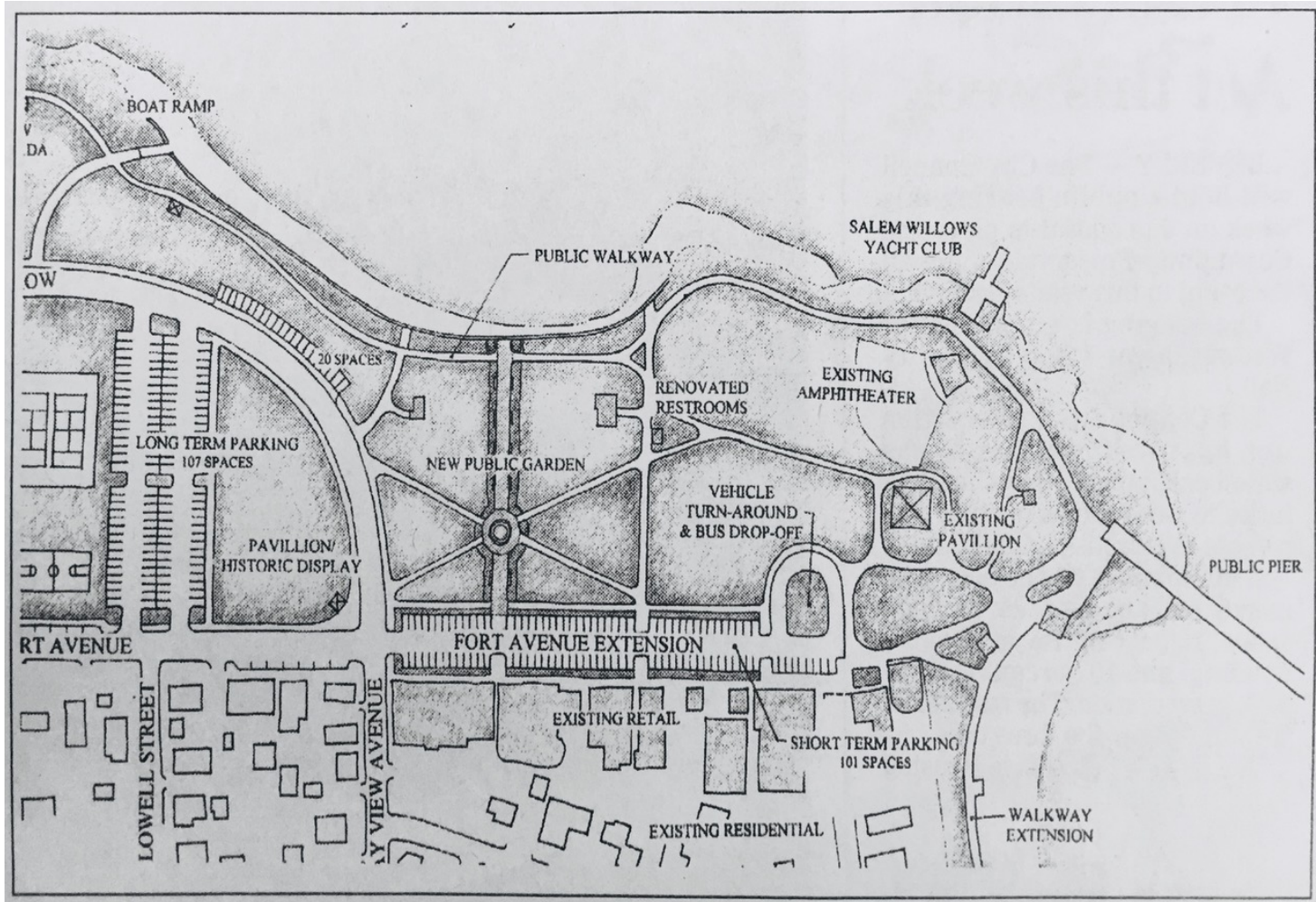


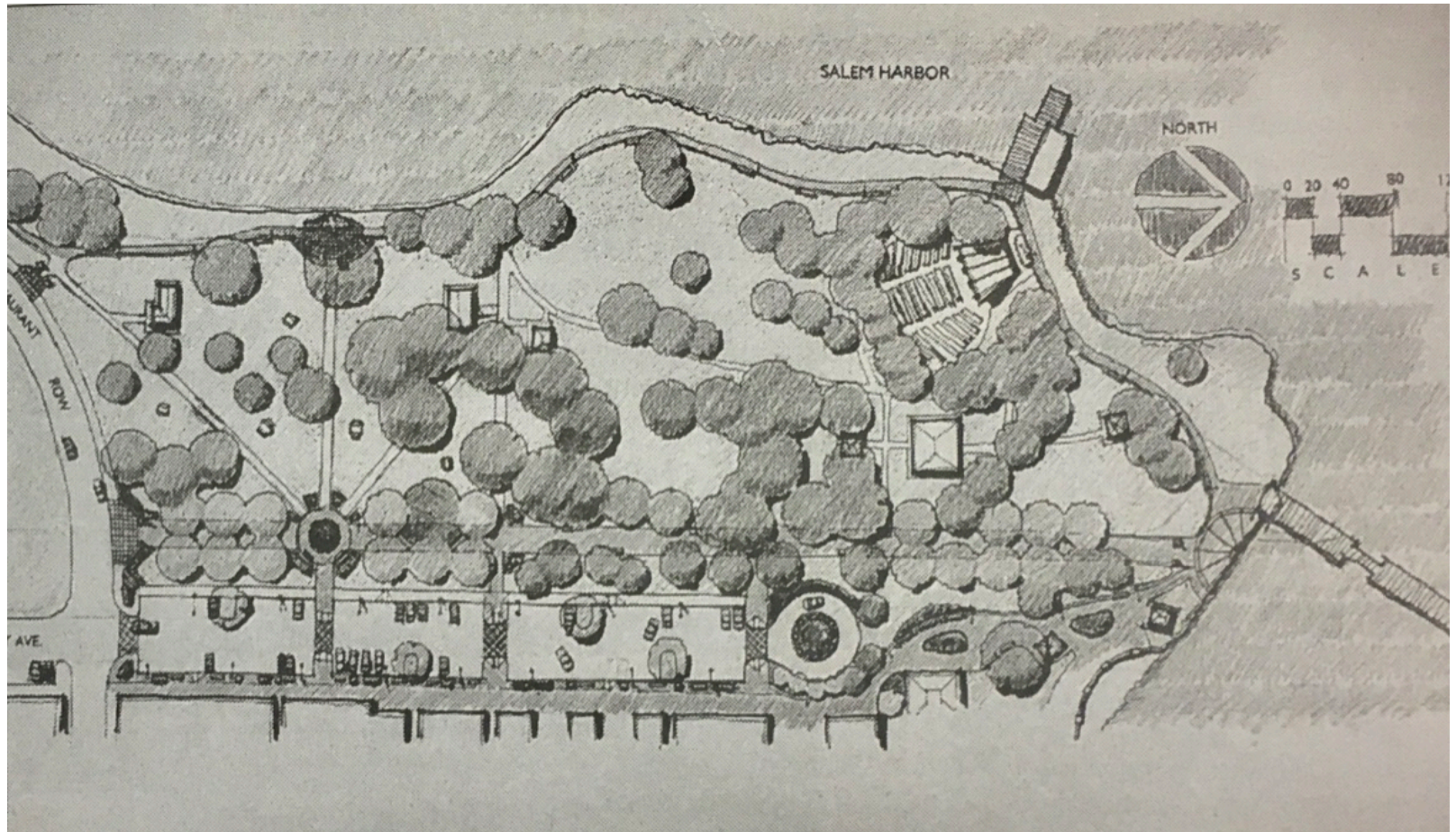
Formal garden opposite Restaurant Row
Frank Cousins, PEM





OPEN AIR THEATRE, SALEM WILLOWS







General Recommendations

- Willows Operation & Maintenance Plan
- Removal of Dead and Unsafe Trees (per Tree Inventory)
 - Replace Trees Where Appropriate
- Maintenance and Hazard Pruning of Trees(per Tree Inventory)
- Create Integrated and Safe Facilities for Pedestrians, Bicyclists and Vehicles
- Stormwater Upgrades Including Green Infrastructure
- Incorporate Areas of Native Plantings
- Fence and Guardrail Repairs/Replacements
- Signage Improvements and Updates
- Small Repairs to Willows Buildings

- 1 Historic Park Area
- 2 Shoreline Park Area
- 3 Active Rec and Parking Area









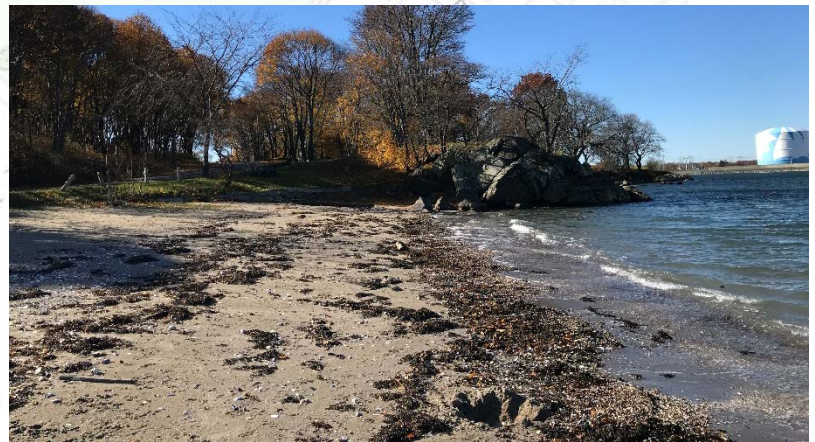




Additional Recommendations

- Seawall Improvements
 - Willows Beach
 - Yacht Club
 - Pier 1
 - Pier 2
 - Right of Front Beach
- Pier Improvements
- Park Lighting / Electrical Improvements
- Pavilion A Grading Improvements
- Pavilion C – Stair Improvements
- Band Shell Ramp Improvements
- Hut Wall Guardrail
- Clam Shack Accessibility and Historic Integrity Improvements









Additional Recommendations

- Seawall Improvements
 - Dead Horse Beach
 - Restaurant Row
- Repair Erosion/ Subsidence Above Clam Shack Seawall











Additional Recommendations

- Restoration of O'Keefe Memorial Field
- Improvements to Restaurant Row (Narrowing, Sidewalks, Crosswalks)
- Fort Lee Parking Lot Improvements
- Creation of Dedicated Picnic Areas
- Fort Avenue Curb and Sidewalk Improvements



Discussion

