

RESTORATION OF THE JEAN MISSUD BANDSTAND ON THE SALEM COMMON

PRESENTERS:

Jenna Ide, City of Salem- Director of Capital Projects & Operations
John Wathne, PE Structures North Consulting Engineers-
Structural Engineer and Materials Conservation

PROJECT TEAM:

Sullivan, Spencer & Vogt, Architects- Project Architect
Johnson Engineering- MEP Engineer



CITY OF SALEM
MASSACHUSETTS

Structures North
CONSULTING ENGINEERS, INC.



INTRODUCTION

A white, octagonal gazebo with a domed roof and arched openings, set in a park-like setting with trees in the background. The gazebo has a decorative railing around its base and a set of stairs on the left side. The background shows lush green trees and a fence.

- **My Role**
- **Overview of Project**
- **Background**
- **Current Status**
- **Team**

HISTORY

- Constructed in 1926 for Salem's Tercentenary



DEDICATED JULY 4, 1978
IN MEMORY OF
MR. JEAN M. MISSUD
1878 - 1941

CONDUCTOR, SALEM CADET BAND
IN RECOGNITION AND APPRECIATION OF HIS
MUSICAL CONTRIBUTION TO THE CITY OF SALEM
DONATED BY SALEM CULTURAL ARTS COMMISSION

- Dedicated in 1973 to Jean Missud, conductor of the Salem Cadet Band from 1878 to 1941



COMMUNITY USES



JEAN MISSUD BANDSTAND RESTORATION
CITY OF SALEM, MASSACHUSETTS



COMMUNITY USES

- **Haunted Happenings**
- **Heritage Days**
- **Weddings**
- **Concerts/Movies**
- **Fundraising**
- **Gathering Space**
- **Playground**
- **Supports Electrical/Irrigation for Common**
- **Architectural Centerpiece of Common**
- **Other?**



EXISTING CONSTRUCTION



JEAN MISSUD BANDSTAND RESTORATION
CITY OF SALEM, MASSACHUSETTS



CAST STONE CONSTRUCTION



JEAN MISSUD BANDSTAND RESTORATION
CITY OF SALEM, MASSACHUSETTS



CONCRETE ROOF DOME



JEAN MISSUD BANDSTAND RESTORATION
CITY OF SALEM, MASSACHUSETTS



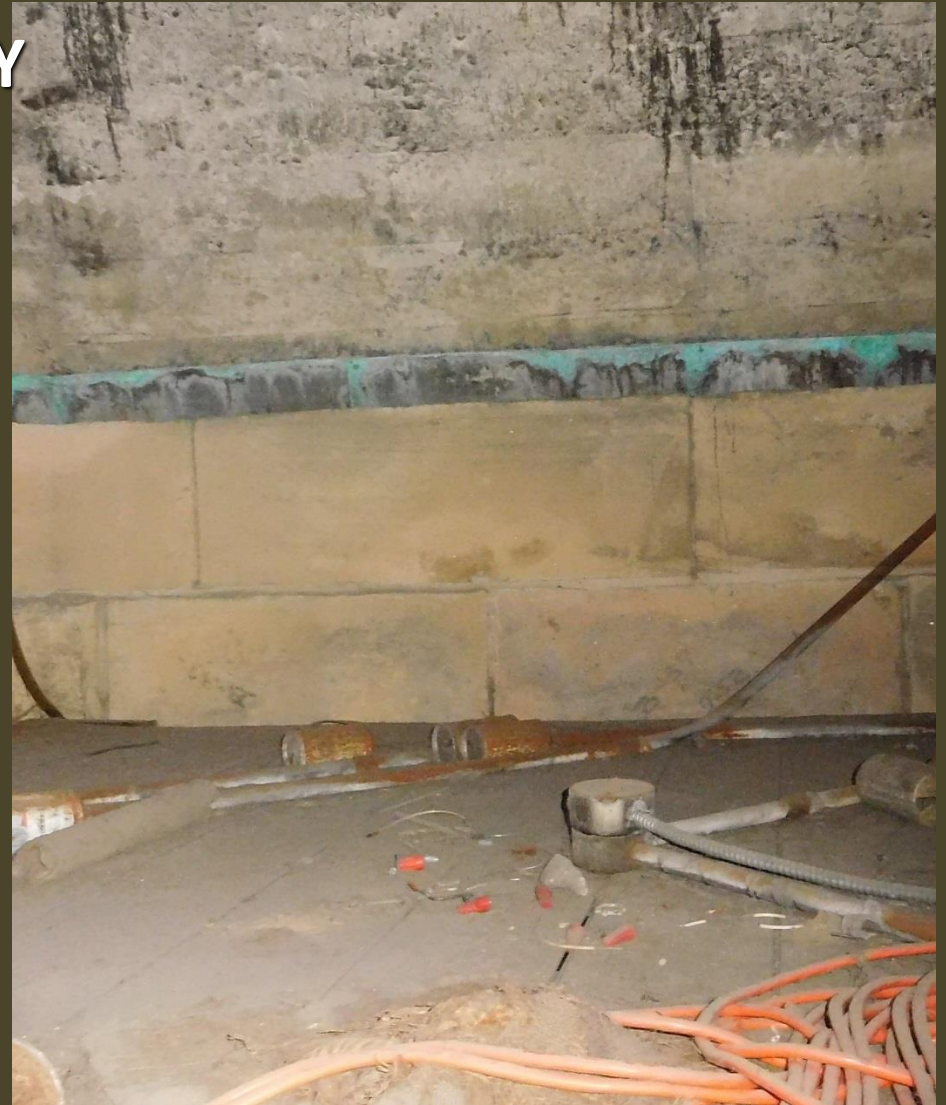
CONCRETE BASEMENT



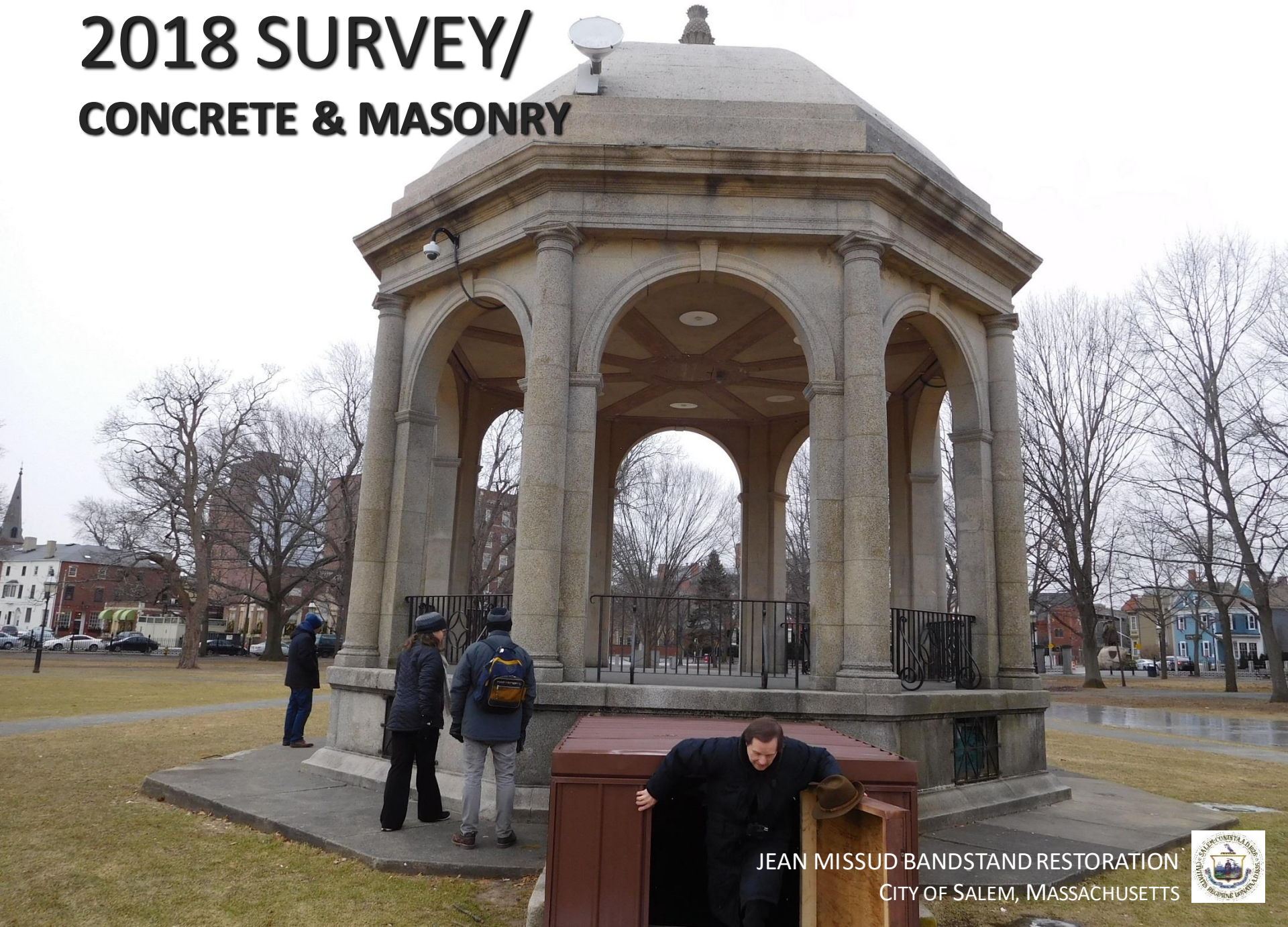
JEAN MISSUD BANDSTAND RESTORATION
CITY OF SALEM, MASSACHUSETTS



CONCRETE MEETS MASONRY



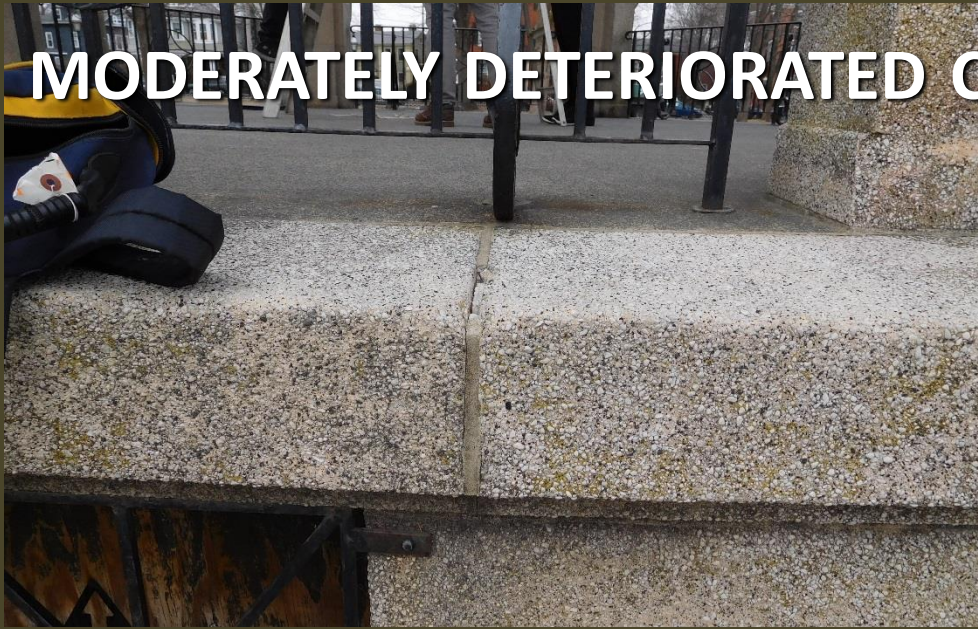
2018 SURVEY/ CONCRETE & MASONRY



JEAN MISSUD BANDSTAND RESTORATION
CITY OF SALEM, MASSACHUSETTS



MODERATELY DETERIORATED CAST STONE



JEAN MISSUD BANDSTAND RESTORATION
CITY OF SALEM, MASSACHUSETTS





SHIFTED STAIRWAY

JEAN MISSUD BANDSTAND RESTORATION
CITY OF SALEM, MASSACHUSETTS



MODERATELY WEATHERED CONCRETE

JEAN MISSUD BANDSTAND RESTORATION
CITY OF SALEM, MASSACHUSETTS



FAILED CAST STONE UNITS



JEAN MISSUD BANDSTAND RESTORATION
CITY OF SALEM, MASSACHUSETTS





FAILED CONCRETE APRON

JEAN MISSUD BANDSTAND RESTORATION
CITY OF SALEM, MASSACHUSETTS



CORNICE FLASHING HAS NO DRIP



JEAN MISSUD BANDSTAND RESTORATION
CITY OF SALEM, MASSACHUSETTS



2018 SURVEY/ ACCESS & ACCESSIBILITY



TEMPORARY BASEMENT ENTRANCE

JEAN MISSUD BANDSTAND RESTORATION
CITY OF SALEM, MASSACHUSETTS



2018 SURVEY/ MEP- ELECTRICAL



JEAN MISSUD BANDSTAND RESTORATION
CITY OF SALEM, MASSACHUSETTS



CEILING LIGHT FIXTURES



JEAN MISSUD BANDSTAND RESTORATION
CITY OF SALEM, MASSACHUSETTS



BASEMENT LIGHTING



JEAN MISSUD BANDSTAND RESTORATION
CITY OF SALEM, MASSACHUSETTS



FLAGPOLE LIGHTING



JEAN MISSUD BANDSTAND RESTORATION
CITY OF SALEM, MASSACHUSETTS



SECURITY CAMERAS



JEAN MISSUD BANDSTAND RESTORATION
CITY OF SALEM, MASSACHUSETTS



SYSTEM GROUND



EXTERIOR RECEPTACLES



EXTENSION CHORDS



JEAN MISSUD BANDSTAND RESTORATION
CITY OF SALEM, MASSACHUSETTS



RUSTING & OUTDATED ELECTRICAL PANEL



McQUEENY ELECTRIC, INC. 922-0674

LP1

SIEMENS

| Panel type | Systems | Provisions are for the following breakers |
|------------|-----------------|---|
| 91 | 120/240 1Ø/3ØW | BL, BL11400, BLF, BLHF |
| 92 | 120/208W 1Ø/3ØW | BLHF |

250 Amps max. (see main device or breaker)

Suitable for service equipment with a main overcurrent device or when not more than six service disconnects are provided and when not used as a lighting and appliance branch circuit panelboard; see Article 384-14 of the National Electrical Code.

LP1 CONTACTOR CONTROLLED

Use Siemens QF-3
Muir plates to cover
all unused circuits.

Field conductors can
be 60° c or 75° c
cu. or al.

Breaker handle in the
intermediate position
indicates tripped. To
reset, move the handle to
the extreme off position,
then on.

Short circuit
information is located
on the rear of this cover.

Caution : if more than
10% of the breaker
poles are supplying
lighting and appliance
circuits, then this unit is
not to exceed 42 circuits
NEC Article 384-14
and 15

These panels are to
be installed in the
following minimum
clearance:
120 in. x 120 in. up to
100 lb. for 1Ø circuit
96 in. for 2Ø circuit
96 in. for 3Ø circuit



DANGER

Filed installable kits for the addition of means and components to this panel to meet special requirements are listed on the back of the dead front.
For emergency service call
1-800-211-3432

Siemens Energy & Automation, Inc. Atlanta, Ga. USA

16



RUSTING CONDUIT SUPPORTS



JEAN MISSUD BANDSTAND RESTORATION
CITY OF SALEM, MASSACHUSETTS



***PHASE 1* RESTORATION/ SCOPE**

- **APRON REPLACEMENT**
- **DUST PATH**
- **BASEMENT ACCESS**

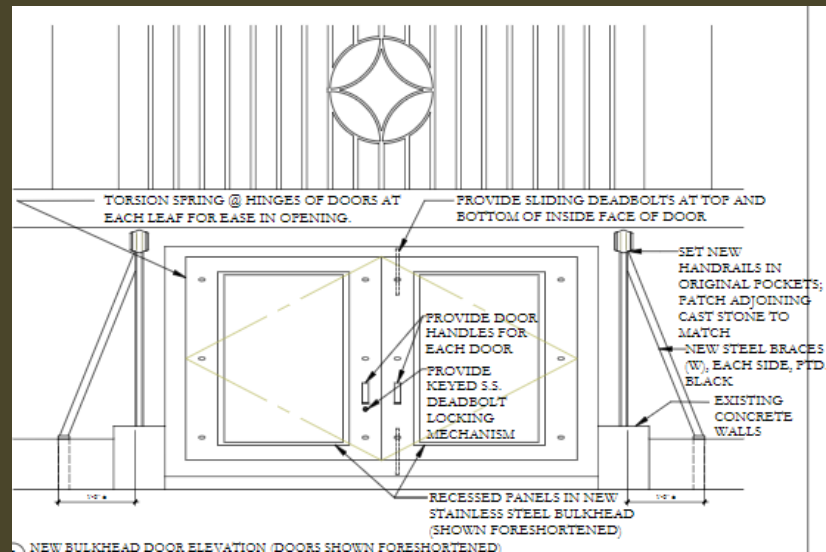
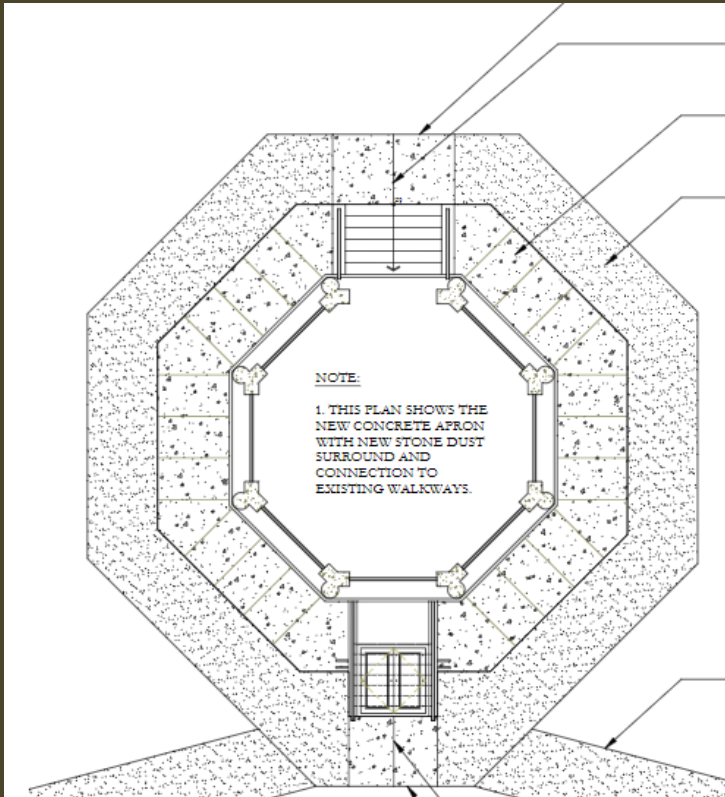
JEAN MISSUD BANDSTAND RESTORATION
CITY OF SALEM, MASSACHUSETTS



PHASE 1 SCOPE / APRON REPLACEMENT



PHASE 1 SCOPE / NEW BASEMENT ENTRANCE



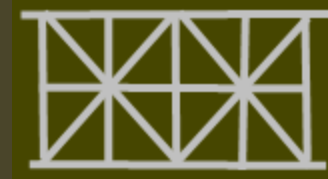
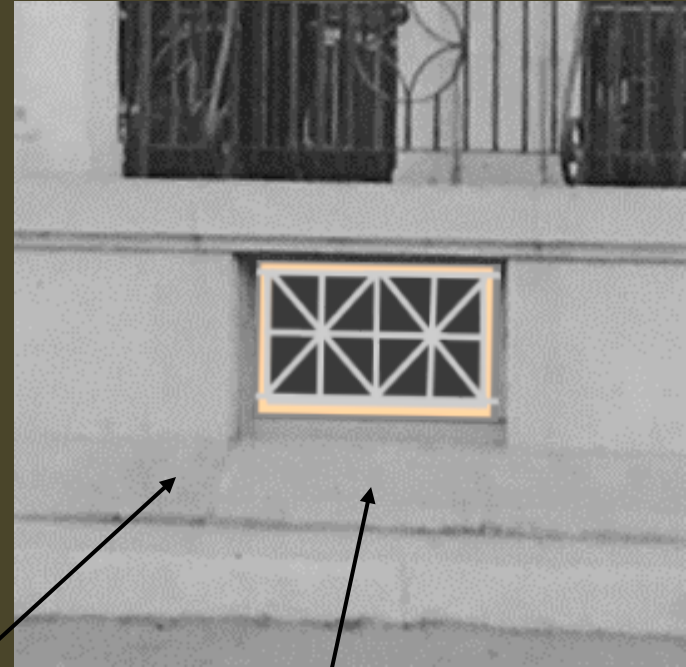
***PHASE 2* RESTORATION/ SCOPE**

- **MASONRY RESTORATION AND REPAIRS**
- **STAIR RECONSTRUCTION**
- **RAILING RESTORATION**
- **ELECTRICAL/SECURITY**
- **WINDOWS**

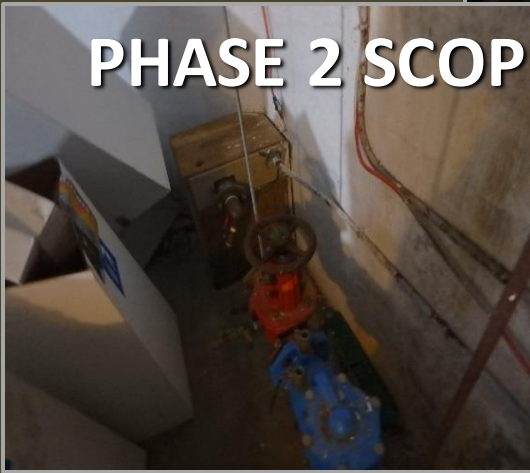
JEAN MISSUD BANDSTAND RESTORATION
CITY OF SALEM, MASSACHUSETTS



PHASE 2 SCOPE / WINDOW REPLACEMENT



PHASE 2 SCOPE / ELECTRICAL



JEAN MISSUD BANDSTAND RESTORATION
CITY OF SALEM, MASSACHUSETTS



MORE ANALYSIS NEEDED

- ACCESSIBILITY TO DECK LEVEL
- AIR CIRCULATION BASEMENT
- PLUMBING/IRRIGATION
- COMMUNITY USE OF BASEMENT
- STORAGE UPGRADES
- OTHER USES THE BANDSTAND COULD SUPPORT IN THE FUTURE



THANK YOU!

....QUESTIONS?

JEAN MISSUD BANDSTAND RESTORATION
CITY OF SALEM, MASSACHUSETTS



PLEASE CONTACT:

Jenna Ide

jide@salem.com

978-619-5699

**JEAN MISSUD BANDSTAND RESTORATION
CITY OF SALEM, MASSACHUSETTS**

